

**Wollert Stakeholder Reference Group
MEETING NOTES**

Meeting No.:	05		
Date:	14 November 2023	Time:	2.00pm
Location:	Kirrip Community Centre, 135 De Rossi Boulevard, Wollert		
Chairman:	Griff Davis (GD)		
Present:	<p><u>Community Members:</u> Hamish McDonell (HM), Melbourne Arboretum Maggie McDonell (MM), Melbourne Arboretum Bud Wijesinghe (BW), Wollert resident</p> <p><u>Community Organisations:</u> Viktor Faulkner (VF), Whittlesea Community Farm</p> <p><u>Hanson:</u> Daniel Fyfe (DF), Land and Mineral Reserves Manager Drew Heath (DH), Quarry Manager Evan Kyriakopoulos (EK), Landfill Manager Chris Lynch (CL), Wollert Resource Park Project Manager</p> <p><u>Secretariat:</u> Lyndel Hunter (LH), LH Strategic Communication</p>		

Item	
1	<p>Welcome</p> <p><u>Acknowledgement of Country</u> Our meeting is being held on the lands of the Wurundjeri people of the Kulin Nation and I wish to acknowledge them as the traditional owners of these lands and water. I also pay my respects to Wurundjeri elders, past and present, and elders of other communities who may be here today.</p> <p><u>Apologies:</u> Jeanette Carthy, Wollert resident Roy Carthy, Wollert resident Pablo Giminez, Mernda Repair Café Peter Gross, Wollert resident GD advised that Peter has taken a new position which will preclude him from future day meetings. However, Peter will remain on the SRG mailing list enabling him to keep up to date with information, contribution information and attend any SRG events set for outside working hours.</p> <p><u>Absent:</u> Simone Chetwynd-Brown, Unit Manager Resource Recovery, City of Whittlesea Amanda Dodd, Manager Sustainable Environment, City of Whittlesea Kellett McDonell, Wollert resident</p>

	Sanela Rikalo, North Metropolitan Region, EPA Representative, ERR
2	<p>Presentation: Hanson Update on Current Quarry Activities <i>Drew Heath, Quarry Manager, Wollert Quarry</i> (Refer to ATTACHMENT)</p> <p>DH presented an image of the South Pit demonstrating the next blast, the location of current stripping activity, areas of blasting since last meeting, and advised that all other faces in the South Pit were complete and at the extraction limit. A similar image was presented of the East Pit indicating next blast, stripping activity locations and areas of blasts since last meeting. DH advised that production rates were consistent, however sales had slowed.</p> <p>DH advised of several complaints had been made to ERR about impacts of blasting at the quarry. Consequently, ERR sought and received the following information:</p> <ul style="list-style-type: none"> · Current blasting methodology and practice. · Information on the current blasting noise and vibration monitoring practices and any changes that have been implemented since commencing activities in the south region of Bridge Inn Road. · Site complaints procedure and community engagement practices with surrounding residential properties. · Any areas identified for improvement in blasting practices, monitoring undertaken and community engagement and notification practices. · Blast monitoring data from 1 January 2023 to 12 Oct 2023 to check compliance against WA conditions. <p>GD queried how Hanson can respond to complainants with no contact or location details. DH advised that all engagement opportunities such as registration for SMS Blast Notification, invitation to attend SRG and direct contact information were provided to ERR to forward to the complainants.</p> <p>DH advised that ground vibration and air blast monitoring of the latest blasts were all compliant. However, results at Bindts Road and the Red Brick House near the South Pit, and Masons Road near the East Pit are trending up. The results at the Red Brick House monitor are likely a result of the blasts getting closer. The blasting contractor, Orica, has been contacted and a meeting is set for next week to discuss possible blast design changes.</p> <p>DH presented a chart of the ground vibration and air blast monitoring data from the seven monitors during the eight blasts conducted since the last SRG meeting. All results were compliant.</p> <p>DH advised presented the volumes achieved for 2023 and the projected 2024 volumes, noting that operationally there would be no major changes. Drones will be used in the East Pit to inspect fragmentation following a blast, and blasting in the South Pit needs to be conducted to manage construction of the proposed freeway on ramp.</p> <p>DH presented a video of Blast 150 conducted on 1 November 2023.</p>
3	<p>Presentation: Hanson Update on Current Landfill Activities <i>Evan Kyriakopoulos, Operations Manager, Hanson Landfill</i> (Refer to ATTACHMENT)</p> <p><i>Landfill Gas (LFG) System Management:</i> EK advised that the Wollert Renewable Energy Facility (REF) consists of:</p> <ul style="list-style-type: none"> · seven 1,100kWh engines (7.7MWh); · an eighth engine is arriving early 2024; · six 1,000m³/h flares; and

- a 100kWh Solar Array.

The REF also hosts a data centre, with two further data centres currently being installed to be completed in early 2024.

EK reported that expansion and maintenance of the LFG system during August to November 2023 has included the installation of 51 LFG wells, including 27 new wells and 24 replacement redrills.

EK provided images mapping the location of the LFG system on the site.

MM queried how long Hanson expects to extract gas from the cells. EK projected about 30 years.

Landfill Operations, Construction and Leachate Treatment

Waste Filling:

EK reported that Cells 14 and 15 are currently being filled, and soft layer filling of Cell 15 is continuing. EK provided data of tonnes received up to 31 October 2023, including 517,100 tonnes received and 109,662 vehicles.

MM noted that there had been a drop in waste received at the landfill. EK advised that from January to March 2023, the landfill was receiving contaminated soil from the North East Link as the route runs through an old landfill. Now the project only has mud and Hanson won't accept this material as it will only take structurally sound material.

Cell Construction and Capping:

EK advised that:

- Construction of Cell 16 recommenced in late September, with clay liner works undertaken at the east end, and installation of geosynthetics planned to commence in December.
- Twelve month monitoring and maintenance of the Cell 12 Evapotranspiration Cap will continue.
- The design of the Cell 13 Cap is complete and is currently being reviewed by the Environmental auditor. Construction is expected to commence early 2024.
- Cell 17 has been identified as a potential Category B Waste and Stabilised Waste Cell, subject to government regulation. Quarry rehabilitation of Cell 17 is in progress, and the proposed design will be in line with the Resource Park vision of allowing Category B and stabilised wastes, such as the bottom ash from waste to energy process and waste treatment to be managed internally. If approved, construction of the cell is planned for 2025 and the design would incorporate a double composite liner.

MM queried what defined stabilised waste. EK responded that the waste is almost cement treated to stop leaching. For example, legislation may be introduced requiring bottom ash from a waste to energy facility to be treated.

EPA Site Inspection:

EK reported that EPA had provided redacted details of date, time, direction and description of odour complaint. Complaint was identified as being at 11.00pm on 3 July 2023 and experienced approximately 2.5km north of the site. An investigation of the conditions and data at the date, time and location provided, indicate the site was downwind of the location and therefore not the source of the odour as the winds were blowing from NE to NW for the hour prior to, during and after complaint.

Leachate Treatment Plant:

EK reported that 25.8ML of leachate had been treated and discharged to sewer in the year to date, with approximately 83kL being discharged daily. The construction of a fourth leachate pond is planned to commence in late 2023.

EK presented an image of the most recent aerial of the site and advised that a solar ray across the cap was being considered, dependent upon the commercial benefit.

<p>4</p>	<p>Presentation: Update on Resource Park Project <i>Chris Lynch, Project Development Manager, Wollert Resource Park</i> (Refer to ATTACHMENT)</p> <p><u>Recent Visitors:</u> CL advised that Lauren Kathage MP, the Member for Yan Yean had visited the site of the proposed Wollert Resource Park on 27 October 2023. Because of her visit, Ms Kathage spoke to the Second Reading of the <i>Environment Legislation Amendment (Circular Economy and Other Matters) Bill 2022</i> in the Legislative Assembly on 2 November 2023. During her speech, Ms Kathage her support for the development of the facility, stating that it was “an innovative circular economy precinct”. CL also reported on a visit from students of the residential Studio Schools, which are on-country learning centres across the remote north conducted by the Indigenous Education and Research Centre in partnership with local communities. Their studies are based on four learning circles, one of which is industry where learning expectations range from understanding about the world of work through to advanced learning of specific knowledge and skills. CL reported that the students believed the kangaroos on the site were bigger than at home, and that they were impressed with the indigenous planting.</p> <p><u>Major Projects:</u> CL advised that fencing works and pest control of deer and foxes was being undertaken in the 20ha conservation site. A fence trap and cameras are being used to manage the deer population. 5,000 plants have now been installed along Darebin Creek. Major earthworks continue and seed collection will commence in December 2023. Plants for the screening vegetation are being sourced from Nugal Biik plants and seeds. CL reported that there have been delays in the final approval of the intersection upgrade as there is a clash with a Telstra asset. A long lead procurement for power poles will be commencing soon and it is anticipated that construction of the intersection will commence in March 2024.</p> <p><u>Resource Park Update:</u> CL advised that the Planning Scheme Amendment had been submitted to Whittlesea Council. The expression of interest process was now complete, and 18 responses had been received. The shortlisting of projects is currently underway. Additional activities likely to be included at the Resource Park include:</p> <ul style="list-style-type: none"> · A Waste to Energy facility that will potentially process 600,000 tonnes of waste per annum producing 30MWh to power up to 30,000 homes. · A soil washing /. Soil remediation facility. · An organics processing facility. · A tyre processing facility · A Construction and Demolition (C&D) and Commercial and Industrial (C&I) recycling facility. <p>CL reported that Hanson Executive had agreed to the expansion of Hanson engagement through social media platforms such as X (Twitter), Facebook, LinkedIn and YouTube, in addition to the current website, videos and printed information provided.</p>
<p>5</p>	<p>Presentation: Nugal Biik Plants and Seed Nursery <i>Viktor Faulknor, Whittlesea Community Connections</i></p> <p>VF advised that Nugal Biik means ‘belongs to the Earth’, so was deemed most appropriate as a name. The Nugal Biik Plants and Seed Nursery is a Whittlesea Community Connections (WCC) project. The WCC is a community services organisation based in the City of Whittlesea. This year it celebrated 50 years with an expanding range of community services and programs. The WCC has 70 staff and manages more than 350 volunteers.</p>

	<p>WCC has formed a partnership with Yarra Valley Water, Melbourne Polytechnic, with support from the City of Whittlesea, to develop a farm. The Wollert Community Farm was conceived in 2018 and, in 202, received \$1.5m in funding from DELWP. The farm is located just a few kilometres from the Hanson site.</p> <p>The Wollert Community Farm is a place for community to connect, learn and prosper through environmental and agricultural activities that offer opportunities for food security, well-being and empowerment, a circular economy, training and employment, biodiversity and First Nations people.</p> <p>WCC is now starting a social enterprise nursery – Nugal Biik Plans and Seeds. It will be a wholesale production nursery specialising in local indigenous plants. Starting infrastructure will manage 450,000 tube-stock plants per annum and will include a Seed Production area. The site will utilise recycled water from Yarra Valley Water, and it is expected that the first plants will be available in Autumn 2024.</p> <p>VF reported that seed harvesting will commence at the Hanson site in December 2023. These plants will be grown on and sold back to Hanson for site rehabilitation.</p> <p>VF advised that the nursery will fund and support other farm activities and programs such as conservation projects. Indigenous ranger programs, and indigenous trail, a schools program and employment pathways.</p>
<p>6.</p>	<p>Report: Community Engagement Plan Update <i>Lyndel Hunter, LH Strategic Communication</i> (Refer to ATTACHMENT)</p> <p>LH reported that following meetings with other Hanson Reference Groups, it was clear that the use of social media for community engagement was necessary. As this required internal management by Hanson, Chris Lynch will be managing the introduction of these engagement elements.</p> <p>LH advised that it had also become clear that the greatest impact on engagement was misinformation distributed by social media, and more emphasis needs to be placed on ensuring facility neighbours and the local community have the correct information. LH stated that she believed the best solution is to increase face-to-face activity with the community. COVID lock downs and restrictions limited the ability to meet with community members, but Hanson has a good track record of conducting community information activities.</p> <p>These include:</p> <ul style="list-style-type: none"> · A Pop Up Information booth that includes display space, a counter and storage and a screen to play looped videos. The branding skins can be replaced to suit the Wollert Resource Park logo. · Community information sessions conducted in a range of formats. Either an open hall with displays and roving Hanson staff and specialist consultants to respond to queries, a venue set with specified topic or area information tables allowing community members to speak with the relevant Hanson staff member or specialist consultant, or an appointment format where community members can prebook consultations with the relevant Hanson staff member or specialist consultant to discuss their specific issue or concern. · Participation in community events and festivals, allowing one-to-one opportunities to respond to community queries, issues or concerns. This activity is usually supported by information handouts and giveaways with a focus on the children. · Site tours and Open Days have proven to be popular, as was the Wollert Site tour for the SRG conducted in November 2022. · Community partnerships assist with developing a better understanding of Hanson’s operational ethos. The arrangement established with WCC and Nugal Biik Plants is a good example. Partnerships with education institutions also assist with improving understanding of a facility and

	<p>its operation. Hanson Lysterfield Quarry partnered with KIOSC (Knox Innovation Opportunity and Sustainability Centre) and Rowville Secondary College to work with 10 students over a full week, following which the students provided a range of options for the rehabilitation and end-use of the Lysterfield Quarry. Some the concepts presented have provided Hanson, the local council and regulators, of the expectations of future generations.</p> <p>LH suggested that the development and management of community competitions such as the nationally recognised Waste to Art program, or garden based, upcycling based or solution based programs reflecting the resource recovery and reuse aspects of the site could prove to be positive.</p> <p>LH advised that she will be contacting the community engagement / community events management of City of Whittlesea Council to develop a better understanding of what opportunities are available to Hanson for greater participation. The outcome will be reported at the next meeting.</p>
<p>7.</p>	<p>2024 Meeting Dates <i>Griff Davis, Chairman</i></p> <p>Following discussion of the proposed dates for 2024, it was agreed that meetings will continue to be conducted at the Kirrip Community Centre at 2.00pm on either a Wednesday or Tuesday. , dependent on venue availability.</p> <p>It was agreed that 2024 meetings should be conducted in the months of:</p> <ul style="list-style-type: none"> · March · June · September · November <p>These dates may be adjusted, or additional meetings required to align with Wollert Resource Park updates, or permitting application requirements.</p>

<p>Meeting Closed:</p>	<p>GD affirmed that the Meeting Notes and presentations would be distributed via email to all attendees and uploaded to the Hanson website at https://www.hanson.com.au/about-us/regulatory-information/hanson-wollert/</p> <p>GD thanked all attendees and encouraged circulation of the meeting notes and presentations to other community members and organisations.</p>
<p>Next Meeting:</p>	<p>Time and date will be advised when available.</p>

ACTION TRACKER

Item	Issue	Action	By
6	Report of meeting with City of Whittlesea re community engagement opportunities.	LH	Next meeting

HANSON WOLLERT QUARRY – OPERATIONAL UPDATE



QUARRY DEVELOPMENT PLAN

South Pit

- Next Blast - White
- Stripping - Yellow
- West of Orange Line shows blasts since last meeting in August
- All other faces in the south pit are completed and at Extraction limit



QUARRY DEVELOPMENT PLAN

East Pit

- Next Blast - White
- Stripping - Yellow
- North of Orange Line
shows blasts since last
meeting in August



COMMUNITY RELATED COMPLAINTS / ISSUES

No.	Complaint / Allegation	Response	Source
1	<p>Email 12 Oct - As discussed, Wollert community members continue to report to Earth Resources Regulator (ERR) that they are being impacted from blasting that is occurring at the Wollert Hanson Quarry.</p> <p>ERR requests information to check compliance against the blasting noise and vibration requirements for the site.</p>	<p>Email 17 Oct we provided the following information</p> <ul style="list-style-type: none"> • Current blasting methodology & practice • Information on the current blasting noise and vibration monitoring practices and any changes have been implemented since commencing activities in the south region of Bridge Inn rd. • Site complaints procedure and community engagement practices with surrounding residential properties • Any areas identified for improvement in blasting practices, monitoring undertaken and community engagement and notification practices • Blast monitoring data - 1 January 2023 to 12 Oct 2023 to check compliance with WA conditions 	<ul style="list-style-type: none"> • ERR

GROUND VIBRATION AND AIR BLAST MONITORING

- Latest Air Blast monitor results at Bindts road (Sth Pit) and both monitors in Masons Road (East Pit) were under our limit of 120dbl however are trending up.
- Latest Vibration level at Red brick House was 7.9, under our limit of 10mm/s however is trending up
- Orica have been contacted regarding these trends with a meeting to be scheduled late this week to discuss possible blast design changes



KEY FACTS FOR 2023/2024

Production Volume for 2023 = 2.6Mt
Sales Volume = 2.5Mt
Primary Crushing Circuit = 950tph
Tertiary Crushing Circuit = 500tph

Next Year 2024
Production Volume Target = 2.4Mt
Sales Volume Forecast = 2.4Mt
Sales to continue at 24hrs Mon-Fri,
until 6pm Sat



www.oricaminingservices.com

Hanson	Wollert
East Pit-Nth Face	
Wollert_150	Blast class 3
181 blastholes	B/H=11.8m
Tne=54014	GT1.25=19550kg
P/F=0.97	UT600 series
1-11-2023	2:40pm SF-GT

The Power
of Partnership





Thank You

Questions??

Key activities on site – Wollert Landfill



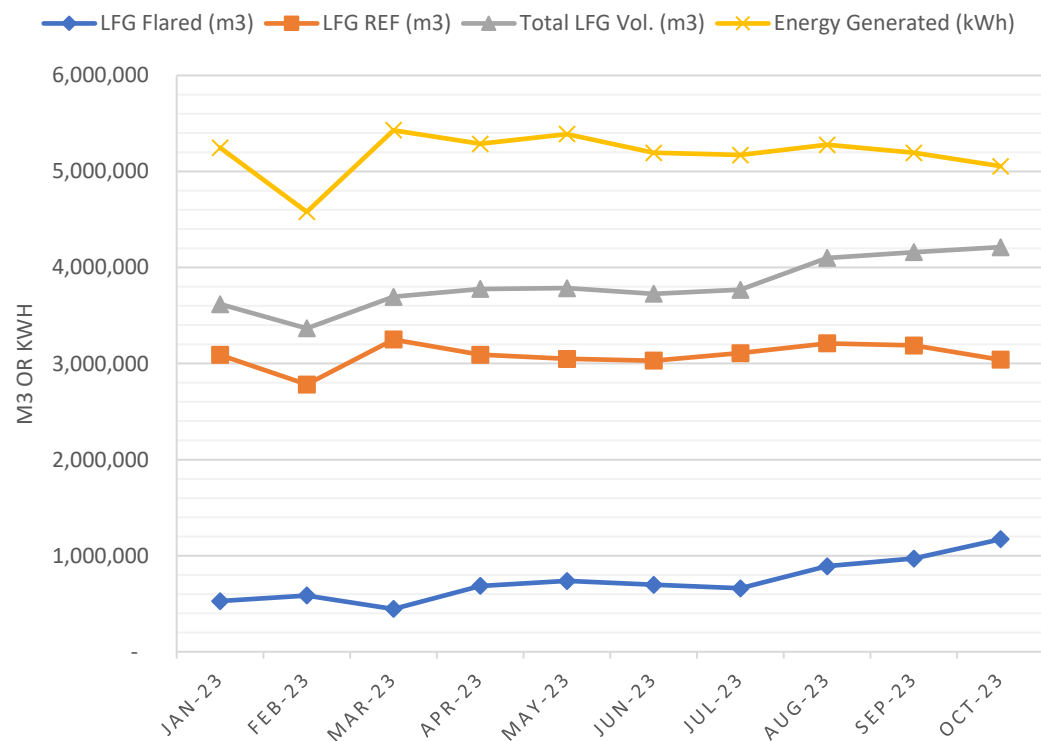
- Landfill Gas Management:
 - Renewable Energy Facility
 - Maintenance & Expansion of Landfill Gas System
- Waste Filling & Cell Construction:
 - Cells 14 & 15
 - Tonnages
 - Cell 16
 - Cell 17
- Capping:
 - Cell 12
 - Cell 13
- EPA Inspection Follow-up
- Leachate Treatment Plant



Landfill Gas (LFG) Management

Month	LFG Flared (m ³)	LFG REF (m ³)	Total LFG Vol. (m ³)	Energy Generated (kWh)
Aug-23	890,375	3,209,568	4,099,943	5,277,160
Sep-23	969,938	3,189,152	4,159,090	5,194,688
Oct-23	1,170,726	3,041,088	4,211,814	5,054,622

WOLLERT LANDFILL GAS PLANT



Wollert Renewable Energy Facility (REF) Overview:

- 7 x 1,100kWh engines (7.7MWh)
- 8th engine arriving early 2024.
- 6 x 1,000m³/h flares.
- 100kWh Solar Array.

- 1 x data centre
- 2 x data centres currently being installed

Expansion and Maintenance of LFG System:

August – November 2023:

- Installation of 51 LFG wells were completed by October
 - 27 new wells
 - 24 redrills (replacements)
- Connection of the new wells in Cells 13 & 14 in progress
- All other new wells & redrills were connected in September



Expansion and Maintenance of Landfill Gas System (cont.)

SCHEDULE OF MGA ZONE 55 CO-ORDINATES

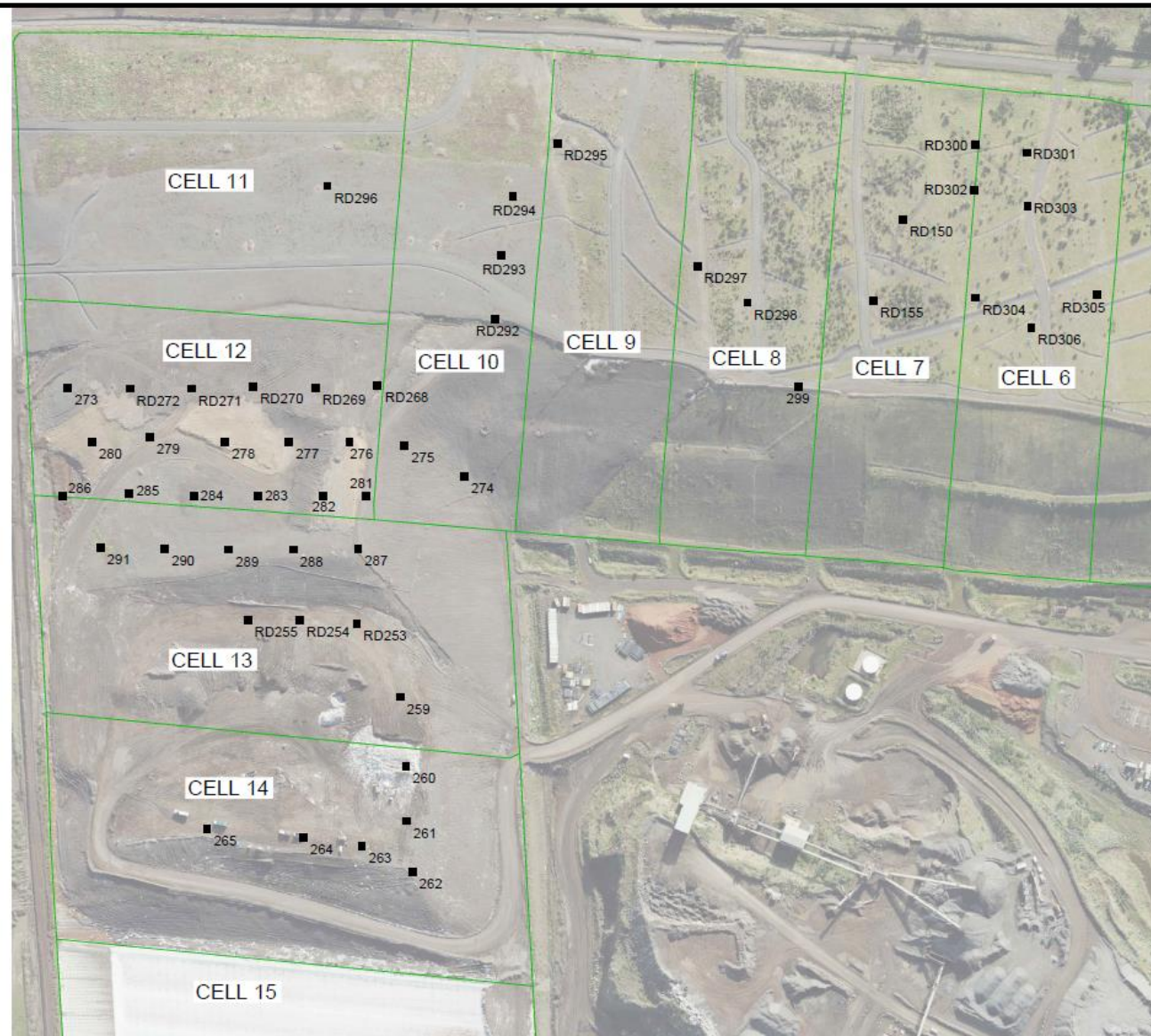
Reference	East	North	Elevation	Depth To Base Of Waste (m)
259	326710.78	5838262.09	198.69	20.89
260	326720.78	5838213.62	198.84	22.25
261	326721.25	5838174.99	198.82	22.63
262	326725.22	5838139.00	194.38	18.83
263	326689.81	5838157.16	198.73	22.62
264	326648.89	5838163.25	198.61	22.05
265	326581.06	5838169.25	198.91	21.38
273	326483.36	5838478.88	200.23	13.68
274	326761.74	5838417.12	191.29	13.66
275	326719.81	5838438.41	206.43	28.54
276	326681.07	5838440.89	211.51	33.01
277	326638.64	5838441.43	208.54	29.70
278	326593.77	5838441.05	207.45	28.28
279	326540.92	5838444.58	204.02	24.33
280	326500.36	5838441.44	201.63	20.6
281	326693.09	5838403.23	209.95	31.55
282	326662.69	5838403.12	210.77	32.75
283	326616.99	5838403.12	207.58	29.00
284	326571.74	5838403.25	205.10	25.98
285	326526.55	5838404.89	203.23	23.58
286	326479.81	5838402.94	198.24	7.68
287	326687.12	5838365.97	209.30	31.57
288	326641.68	5838365.66	208.32	29.98
289	326596.37	5838365.70	206.43	27.51
290	326551.46	5838365.90	204.46	25.23
291	326506.30	5838366.70	198.87	19.25
299	326966.27	5838479.97	210.80	33.23
RD150	327069.70	5838697.45	202.51	23.82
RD155	327049.11	5838540.20	206.06	28.13
RD253	326686.31	5838313.69	198.88	20.52
RD254	326646.30	5838315.82	199.20	20.39
RD255	326609.62	5838315.80	198.91	19.60
RD268	326700.46	5838480.55	211.03	31.48
RD269	326657.33	5838479.14	211.43	32.56
RD270	326613.59	5838479.88	207.73	28.35
RD271	326570.43	5838478.70	206.34	26.39
RD272	326526.99	5838478.71	204.19	23.82
RD292	326783.47	5838527.84	211.78	32.61
RD293	326787.88	5838572.15	210.32	30.68
RD294	326795.81	5838613.79	208.62	28.67
RD295	326827.02	5838660.55	205.56	25.47
RD296	326665.68	5838621.03	207.44	26.58
RD297	326925.46	5838564.55	206.41	28.07
RD298	326960.58	5838539.11	207.24	28.93
RD300	327120.43	5838850.02	199.35	14.26
RD301	327156.59	5838644.28	199.45	16.4
RD302	327120.02	5838617.78	201.31	21.02
RD303	327157.28	5838606.46	201.52	22.83
RD304	327120.83	5838542.44	205.73	27.45
RD305	327205.85	5838544.56	205.15	26.78
RD306	327159.78	5838521.30	206.31	28.2

*RD - Redrill

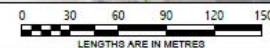
LEGEND

001 PROPOSED GAS WELL LOCATION - STAKE PLACED

BACKGROUND IMAGE CAPTURED 09/07/21, BACKGROUND IMAGE IS FOR PRESENTATION ONLY
LEVELS ARE TO AUSTRALIAN HEIGHT DATUM (AHD) VIDE SITE DATUM PM10
CO-ORDINATES ARE ON MAP GRID OF AUSTRALIA (MGA94) VIDE GPSNET



HANSON
PROPOSED GAS WELLS
BRIDGE INN ROAD
WOLLERT



SCALE
1:3000



JOB NUMBER:	2160712
DATE OF SURVEY:	03/08/2023
FIELD PARTY:	MJ
DRAWN BY:	MJM
PLAN DATE:	04/08/2023
SHEET:	SHEET 1 OF 1
REVISION:	-
SIZE:	A3



1/87-91 Heatherdale Rd
Ringwood 3134

info@landair.com.au
www.landair.com.au

1300 130 158
(03) 9872 5092

Landfill Operations, Construction & Leachate Treatment

Waste Filling:

- Currently filling Cell 14 and 15.
 - Cell 15 – still continuing with soft layer filling (1st lift).
- Waste Tonnes & Vehicles Received in 2023:

Month:	Tonnes Landfilled (kT)	Vehicles to F'fill:	Vehicles to T/S.	Tot. Vehicles 2023
Jan-23	64.2	7,580	3,813	11,393
Feb-23	82.5	8,319	3,197	11,516
Mar-23	75.5	8,964	3,297	12,261
Apr-23	37.8	6,469	3,057	9,526
May-23	44.9	8,013	3,004	11,017
Jun-23	42.8	7,483	3,149	10,632
Jul-23	41.6	7,042	3,260	10,302
Aug-23	42.0	7,331	3,368	10,699
Sep-23	43.0	7,204	3,797	11,001
Oct-23	42.8	7,576	3,739	11,315
TOTAL	517.1	75,981	33,681	109,662

Cell Construction & Capping:

- Cell 16 Construction:
 - Recommended in late Sept.
 - Clay liner works at east end.
 - Geosynthetics planned to commence Dec'23.
- Cell 12 Evapotranspiration Cap:
 - 12-month monitoring & maintenance period continues.
- Cell 13 Cap:
 - Design complete
 - Currently being reviewed by Environmental Auditor (normal EPA process)
 - Expected commencement early 2024.
- Cell 17 - Potential Category B Waste & Stabilised Waste Cell (subject to quarry rehabilitation)
 - Quarry rehabilitation of Cell 17 area in progress;
 - In-line with Resource Park vision, allowing Category B and stabilised wastes (bottom ash from WtE and waste treatment) to be internally managed
 - Planned construction of Cell - 2025.
 - Design of Cell would incorporate a double composite liner.



Landfill Operations, Construction & Leachate Treatment (cont.)

Follow-up from EPA Site Inspection 11 August (due to alleged odour complaint):

- De-identified details (date, time, direction & description) of alleged odour complaint were provided by EPA.
- Complaint was approx. 2.5km NE of site and made at 11pm on 3 July 2023.
- Investigation revealed the site was downwind of the complaint. The site was not the source of the alleged odour (winds were blowing from NE-NW for the hour prior to, during & after the complaint).

Leachate Treatment Plant:

- YTD, 25.8 ML treated & discharged to sewer.
- Approx. 83kL/day discharged to sewer.
- Planned construction of 4th leachate pond in late 2023.



Landfill Operations, Construction & Leachate Treatment (cont.)



Thank You



Evan Kyriakopoulos

Operations Manager

M: 0420 983 622

E: evan.kyriakopoulos@hanson.com.au



1. Recent Visitors

2. Major Projects

3. Resource Park

4. Social Media

5. Questions



Lauren Kathage MP - Member for Yan Yean



Visit to Resource Park 27 October

Mentioned in parliament 2 November

Legislative Assembly		Download PDF ▾
ENVIRONMENT LEGISLATION AMENDMENT (CIRCULAR ECONOMY AND OTHER MATTERS) BILL 2023		
02/11/2023	Second reading	Lauren Kathage (ALP)

I was lucky enough last week to have a tour of the Wollert resource park in my electorate of Yan Yean. This is an innovative circular economy precinct in our growing north. What they are doing there is transforming materials away from landfill and creating valuable circular construction materials. They are proposing to transform the Wollert landfill into a resource recovery precinct, and this will support Victoria's circular economy transition. These are businesses that can step out confidently with innovation and technology because they know they are operating in the context of a government that is creating ideal conditions for businesses that want to make a better mark on the world that we live in and better jobs for people in my electorate of Yan Yean – lots more jobs. I am so pleased about that. What they do there is take on a lot of waste from councils and commercial customers, and the landfill gas that is generated onsite is captured and transformed into electricity. They have got a biogas power facility there that produces almost 8 megawatts of renewable energy, which is enough to power around 11,000 homes or charge 1.2 million electric vehicles. So they are working hard to reach their vision of a circular economy precinct in the outer north, and I look forward to encouraging them on their path there.

Studio Schools of Australia

The residential Studio Schools are on-country across the remote North, together with an Indigenous Education and Research Centre (IERC), co-led and co-designed in genuine partnership with local communities for Indigenous success.



Major Projects

Conservation Area

- Fencing works
- Pest control (deer and foxes)
- Plants installed along Darebin Creek



Vegetation Screening

- Plants being sourced from Nugal Biik plants and seeds
- Major earthworks continues
- Seed collection in December 2023

Intersection Upgrade

- Delays for final approval – clash with Telstra asset
- Long lead procurement commencing soon for power poles

Resource Park Update

Timeline

- Planning Scheme Amendment (submitted)
- Market engagement (complete)
- Shortlisting of projects (occurring)

Activities are likely to include:

- Waste to Energy Facility (5+ years)
- Soil washing/soil remediation (1-2 years)
- Organics processing (2 years)
- Tyre processing (2 years+)
- C&D/C&I Recycling (1-2 years)



Social Media



Social Media

Website

Videos

Mailouts/Articles

Local Stories
Upcoming Events
FAQs

In-depth information
Maps and images
Registration for SRG

Focus on topics

Focus on topics



Thank You



Chris Lynch

*Resource Park Project Manager
Hanson*

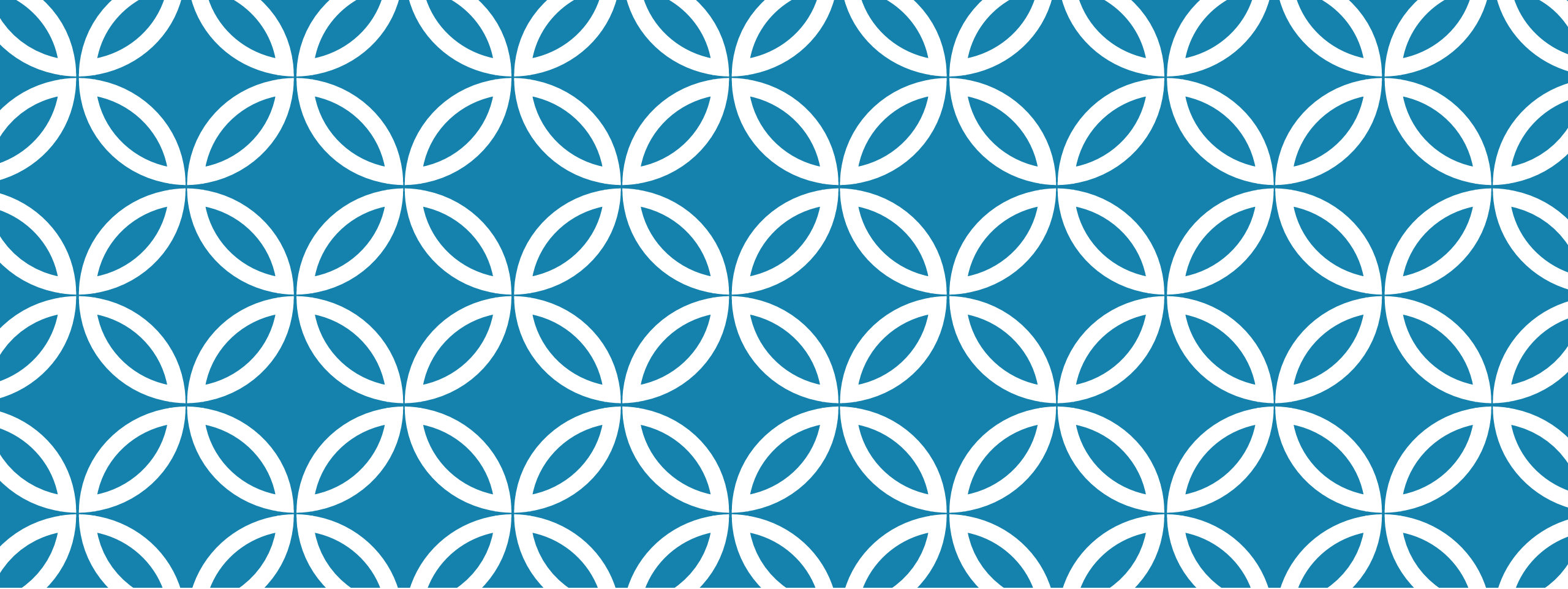
M: 0473 383 923

E: chris.lynch@hanson.com.au

Update on Nugal Biik Plants and Seeds

Viktor Faulkner





NUGAL BIIK PLANTS AND SEEDS





Whittlesea Community Connections

Making a positive difference everyday

- ❑ Community services organisation based in the City of Whittlesea
- ❑ Celebrating 50 years, 1973 – 2023
- ❑ Expanding range of community services and programs
- ❑ 70 staff
- ❑ Managing 350+ volunteers



WCC IS IN PARTNERSHIP TO DELIVER WOLLERT COMMUNITY FARM



- ❑ Yarra Valley Water, Melbourne Polytechnic and Whittlesea Community Connections, with support from City of Whittlesea
- ❑ Farm concept 2018
- ❑ \$1.5M funding from DELWP 2020 + partner contributions



WOLLERT COMMUNITY FARM AND HANSON'S WOLLERT SITE



DRIVERS

WOLLERT COMMUNITY FARM

A place for the community to connect, learn and prosper through environmental and agricultural activities

- Food security
- Well-being and empowerment
- Circular economy
- Training and employment
- Biodiversity
- First nations



WCC IS STARTING A SOCIAL ENTERPRISE NURSERY

nugal biik plants and seeds

- ❑ Wholesale production nursery - local indigenous plants
- ❑ Starting infrastructure for 450,000 tube-stock p/a
- ❑ YVW recycled water
- ❑ Includes Seed Production Area
- ❑ First plants Autumn 2024



THE NURSERY WILL FUND AND SUPPORT OTHER FARM ACTIVITIES

The primary purpose of the nursery enterprise is to fund and support other farm activities and programs:

For example:

- Conservation projects
- Indigenous rangers programs
- Indigenous trail
- Schools program
- Employment pathways

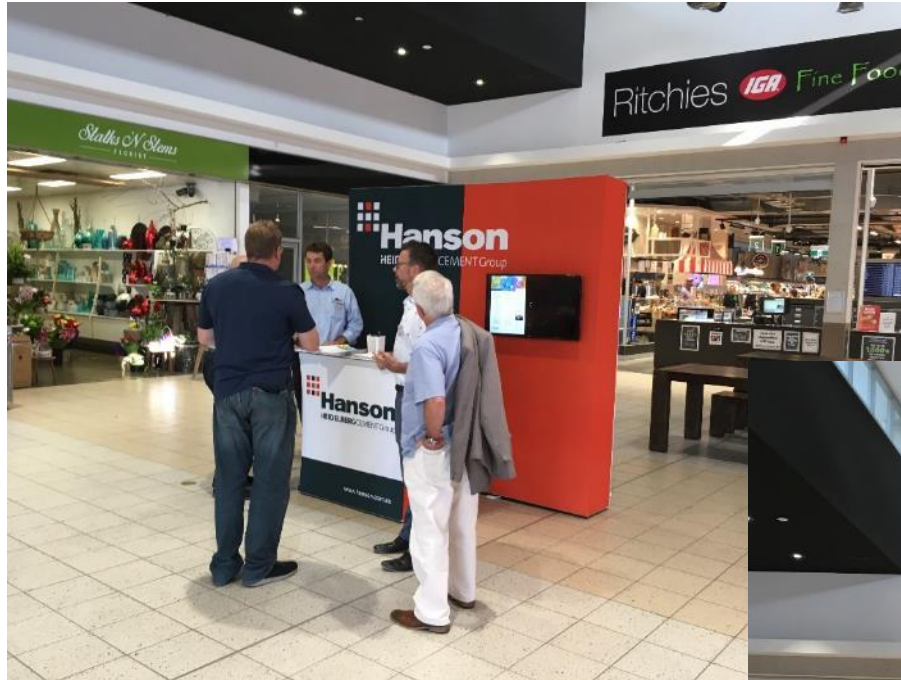


Community Engagement Examples

Lyndel Hunter



Pop Up Info Booth



Community Information Sessions



Site Tours / Open Days



Lysterfield Quarry Rehabilitation Review Proposal



- Hanson wishes to explore with KIOSC and the Rowville Secondary College the full range of options for the rehabilitation and end-use of the Lysterfield Quarry and the potential short and medium term uses of the areas outside of the extraction limits.

Sites:

- Site Address: Hanson Quarry, 1140 Wellington Road, Rowville
- Doncaster Office, 601 Doncaster Road, Doncaster

Contacts:

- Daniel Fyfe 0428 942 672 / Craig Banthorpe 0419 375 912 /



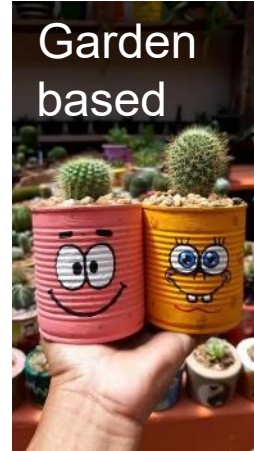
Hanson Rehabilitation Plan

By Cathy, Jagnoor, Matt, Mason,
Caitlin, Mabel and Jordan

Community Competitions



Art based



Garden based



Upcycling based



Solution based

