

# Hanson Lysterfield - Dust Summary

Oct-23

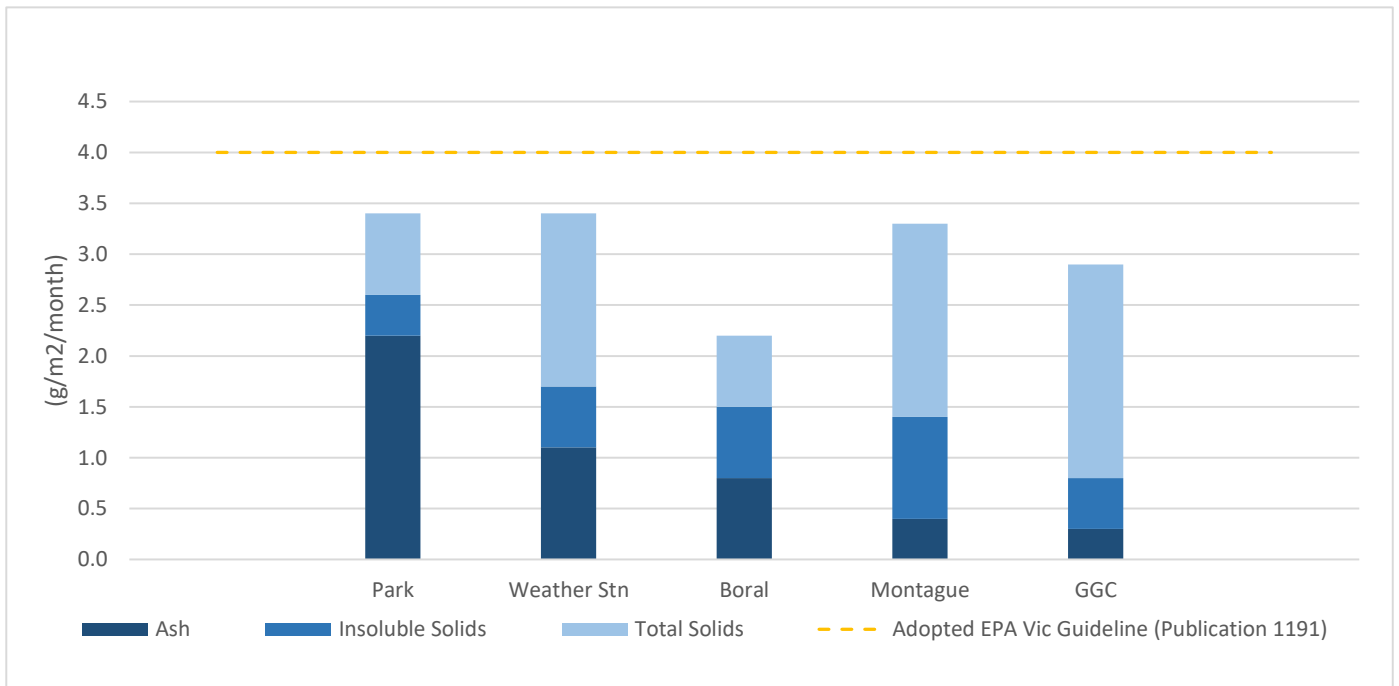
Report No: 1032700

Set Up Date: 7/09/2023

Collection Date: 9/10/2023

Sampling Duration: 32 days

Deposition Gauge ID	Ash Solids (g/m <sup>2</sup> /month)	Combustible Matter (g/m <sup>2</sup> /month)	Insoluble Solids (g/m <sup>2</sup> /month)	Soluble Solids (g/m <sup>2</sup> /month)	Total Solids (g/m <sup>2</sup> /month)	Volume (mL)
Park	2.2	0.4	2.6	0.8	3.4	1400
Weather Stn	1.1	0.5	1.7	1.8	3.4	1500
Boral	0.8	0.7	1.5	0.7	2.2	1300
Montague	0.4	1.1	1.4	1.9	3.3	1100
GGC	0.3	0.4	0.8	2.1	2.9	1300



# Hanson Lysterfield - Park

Oct-23

Report No: 1032700

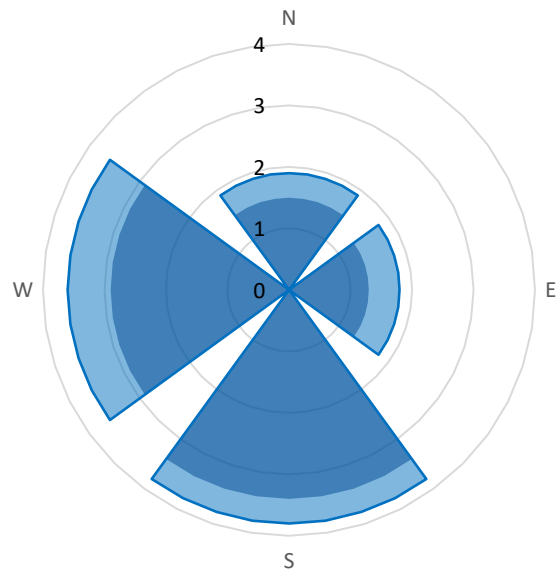
Location: -37.945637, 145.265423

Set Up Date: 7/09/2023

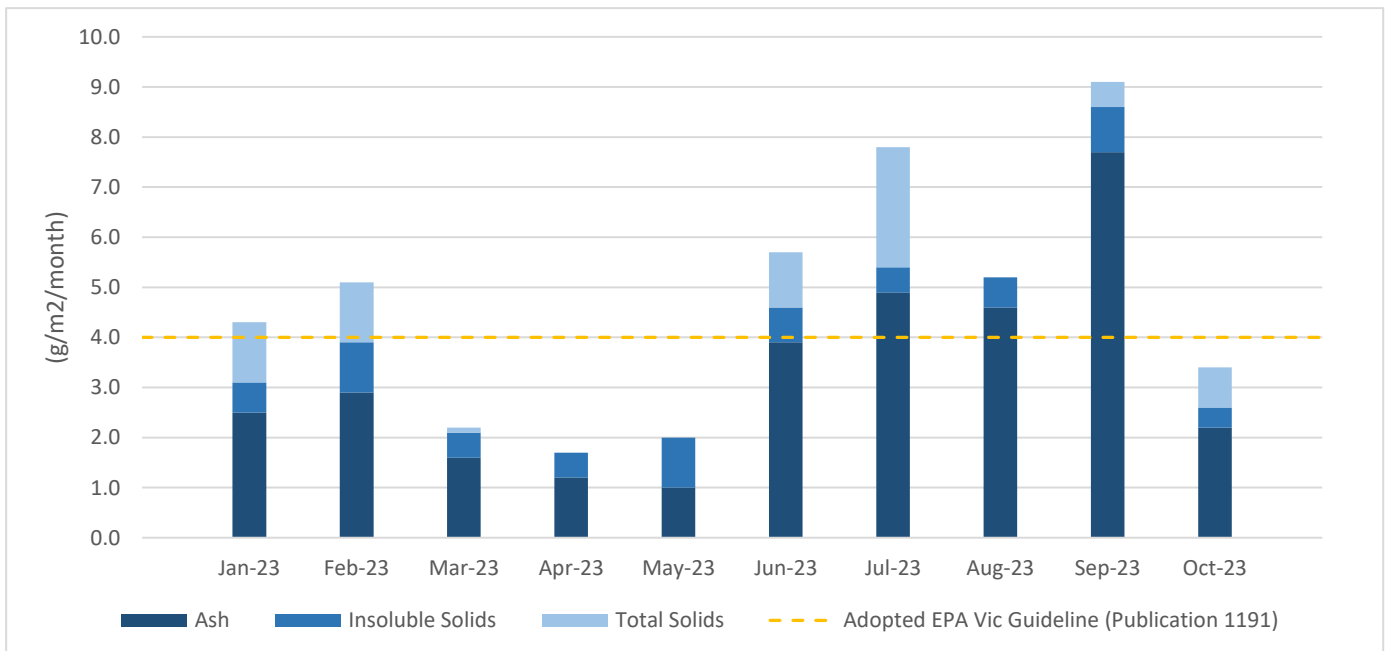
Collection Date: 9/10/2023

Sampling Duration: 32 days

Deposition Gauge ID	Ash Solids (g/m2/month)	Combustible Matter (g/m2/month)	Insoluble Solids (g/m2/month)	Soluble Solids (g/m2/month)	Total Solids (g/m2/month)	% Mass (Insoluble)
Park	2.2	0.4	2.6	0.8	3.4	N/A
North	1.5	0.4	1.9	< 0.1	1.9	17%
East	1.3	0.5	1.8	< 0.1	1.8	16%
South	3.4	0.5	3.8	< 0.1	3.8	34%
West	2.9	0.7	3.6	< 0.1	3.6	32%



■ Ash (g/m2/month) ■ Insoluble Solids (g/m2/month)



Comments:

# Hanson Lysterfield - Weather Station

Oct-23

Report No: 1032700

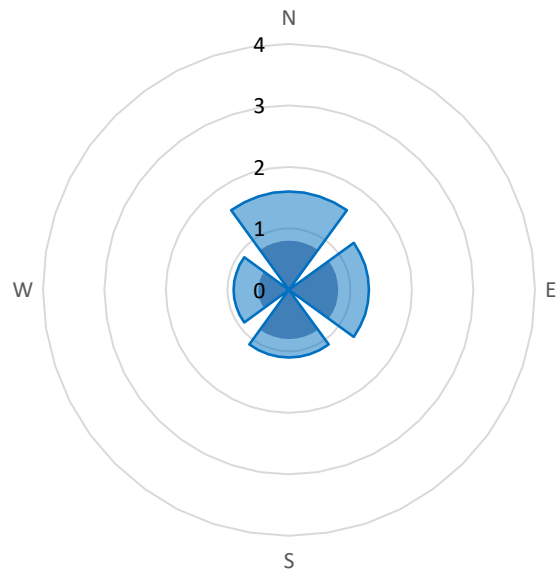
Location: -37.940699, 145.259292

Set Up Date: 7/09/2023

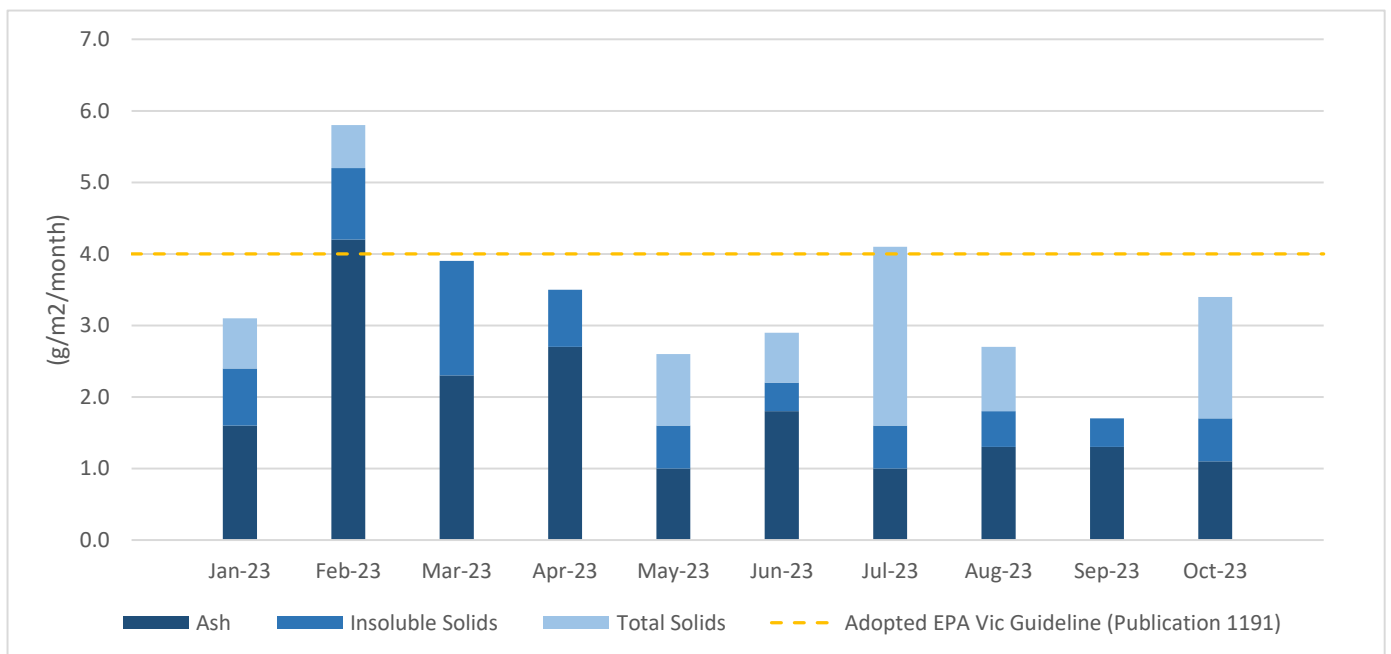
Collection Date: 9/10/2023

Sampling Duration: 32 days

Deposition Gauge ID	Ash Solids (g/m2/month)	Combustible Matter (g/m2/month)	Insoluble Solids (g/m2/month)	Soluble Solids (g/m2/month)	Total Solids (g/m2/month)	% Mass (Insoluble)
Weather Stn	1.1	0.5	1.7	1.8	3.4	N/A
North	0.8	0.8	1.6	< 0.1	1.6	33%
East	0.8	0.5	1.3	< 0.1	1.3	27%
South	0.8	0.3	1.1	< 0.1	1.1	22%
West	0.5	0.4	0.9	< 0.1	0.9	18%



■ Ash (g/m2/month) ■ Insoluble Solids (g/m2/month)



Comments:

# Hanson Lysterfield - Boral

Oct-23

Report No: 1032700

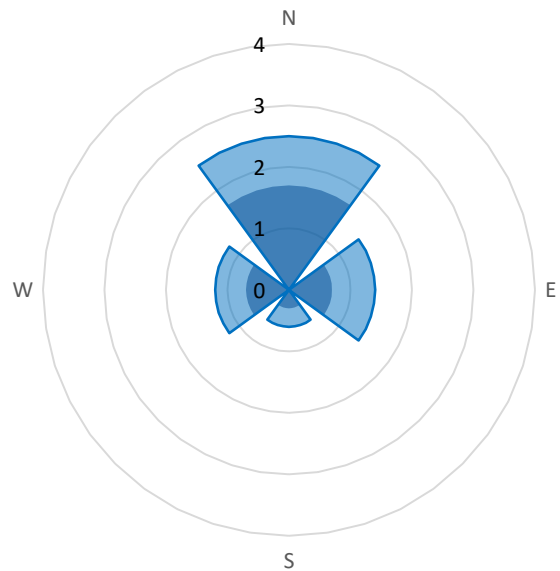
Location: -37.934957, 145.267064

Set Up Date: 7/09/2023

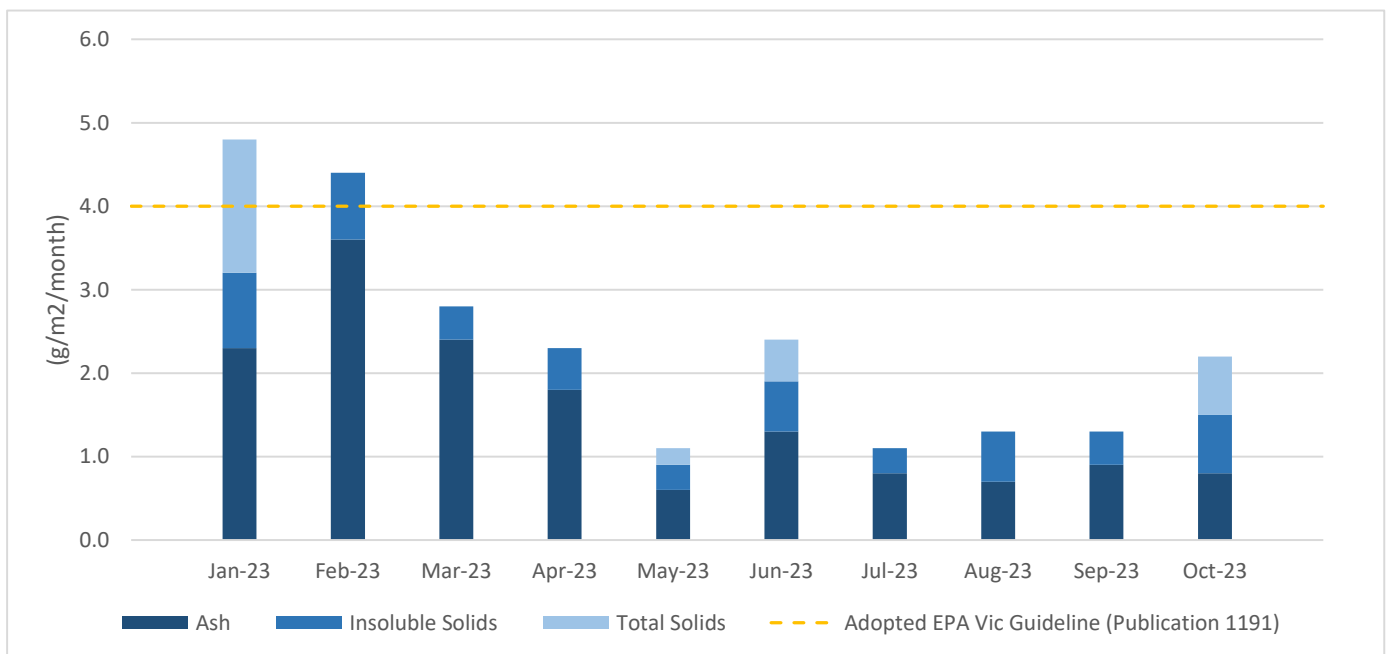
Collection Date: 9/10/2023

Sampling Duration: 32 days

Deposition Gauge ID	Ash Solids (g/m2/month)	Combustible Matter (g/m2/month)	Insoluble Solids (g/m2/month)	Soluble Solids (g/m2/month)	Total Solids (g/m2/month)	% Mass (Insoluble)
Boral	0.8	0.7	1.5	0.7	2.2	N/A
North	1.7	0.7	2.5	< 0.1	2.5	44%
East	0.7	0.6	1.4	< 0.1	1.4	25%
South	0.3	0.2	0.6	< 0.1	0.6	11%
West	0.7	0.5	1.2	< 0.1	1.2	21%



■ Ash (g/m2/month) ■ Insoluble Solids (g/m2/month)



Comments:

# Hanson Lysterfield - Montague

Oct-23

Set Up Date: 7/09/2023

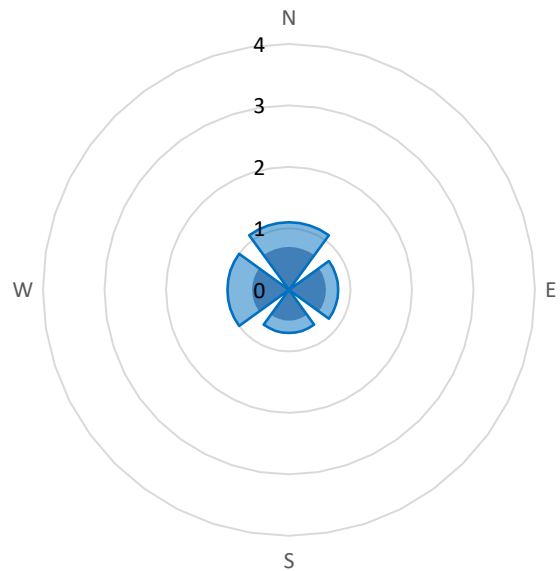
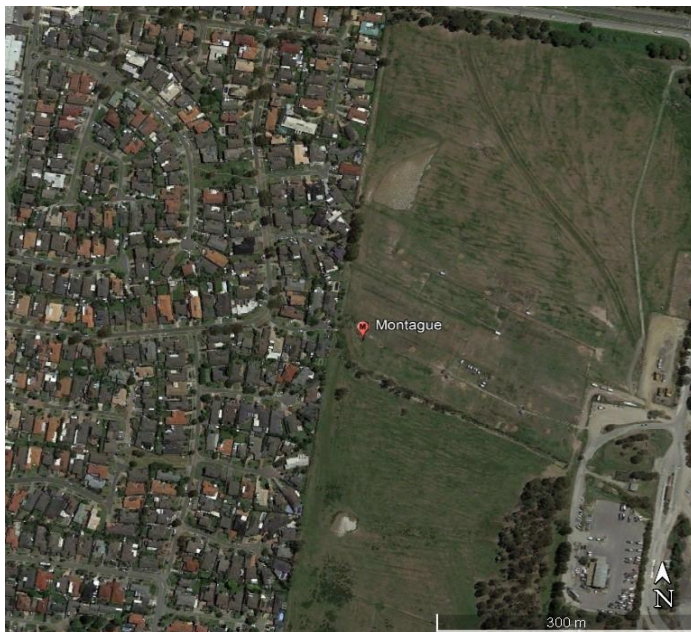
Report No: 1032700

Collection Date: 9/10/2023

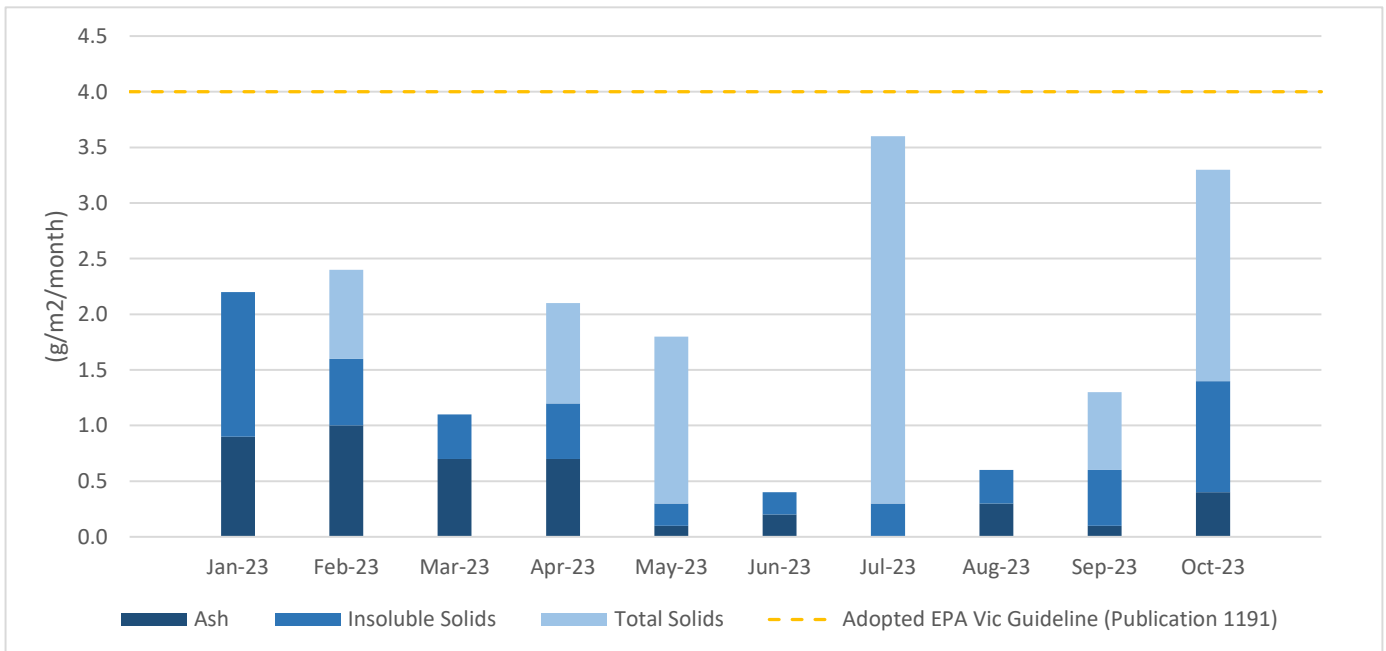
Location: -37.932051, 145.257588

Sampling Duration: 32 days

Deposition Gauge ID	Ash Solids (g/m2/month)	Combustible Matter (g/m2/month)	Insoluble Solids (g/m2/month)	Soluble Solids (g/m2/month)	Total Solids (g/m2/month)	% Mass (Insoluble)
Montague	0.4	1.1	1.4	1.9	3.3	N/A
North	0.7	0.5	1.1	< 0.1	1.1	31%
East	0.6	0.2	0.8	< 0.1	0.8	22%
South	0.5	0.3	0.7	< 0.1	0.7	19%
West	0.6	0.3	1.0	< 0.1	1.0	28%



■ Ash (g/m2/month) ■ Insoluble Solids (g/m2/month)



Comments:

# Hanson Lysterfield - Girls Guide Camp

Oct-23

Report No: 1032700

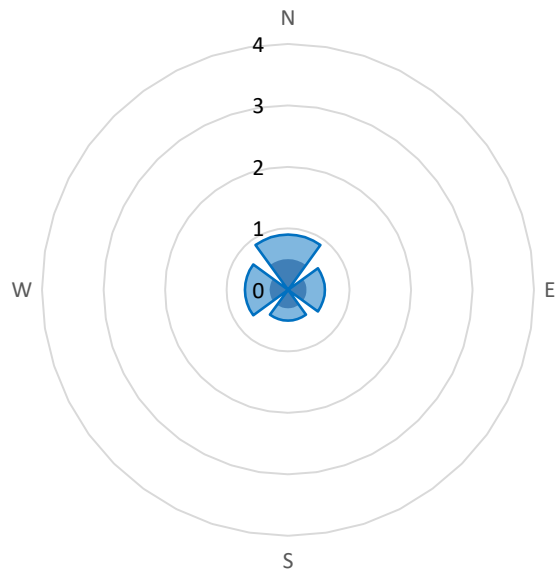
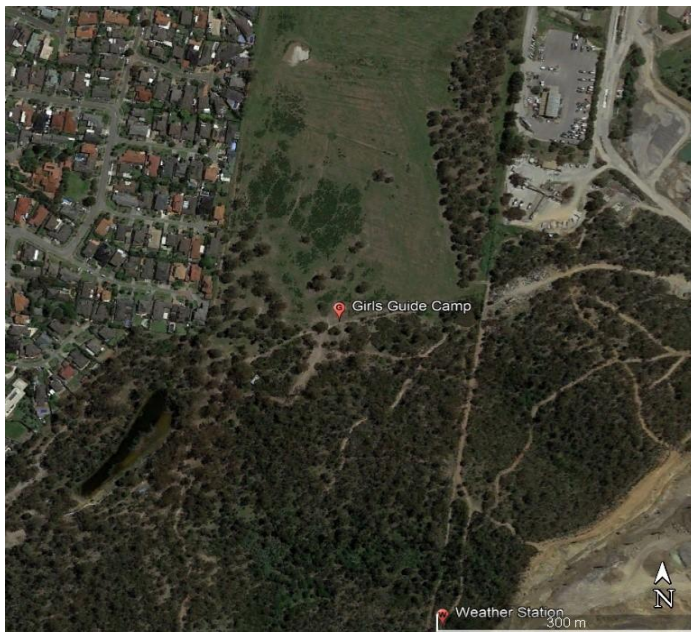
Location: -37.937202, 145.257900

Set Up Date: 7/09/2023

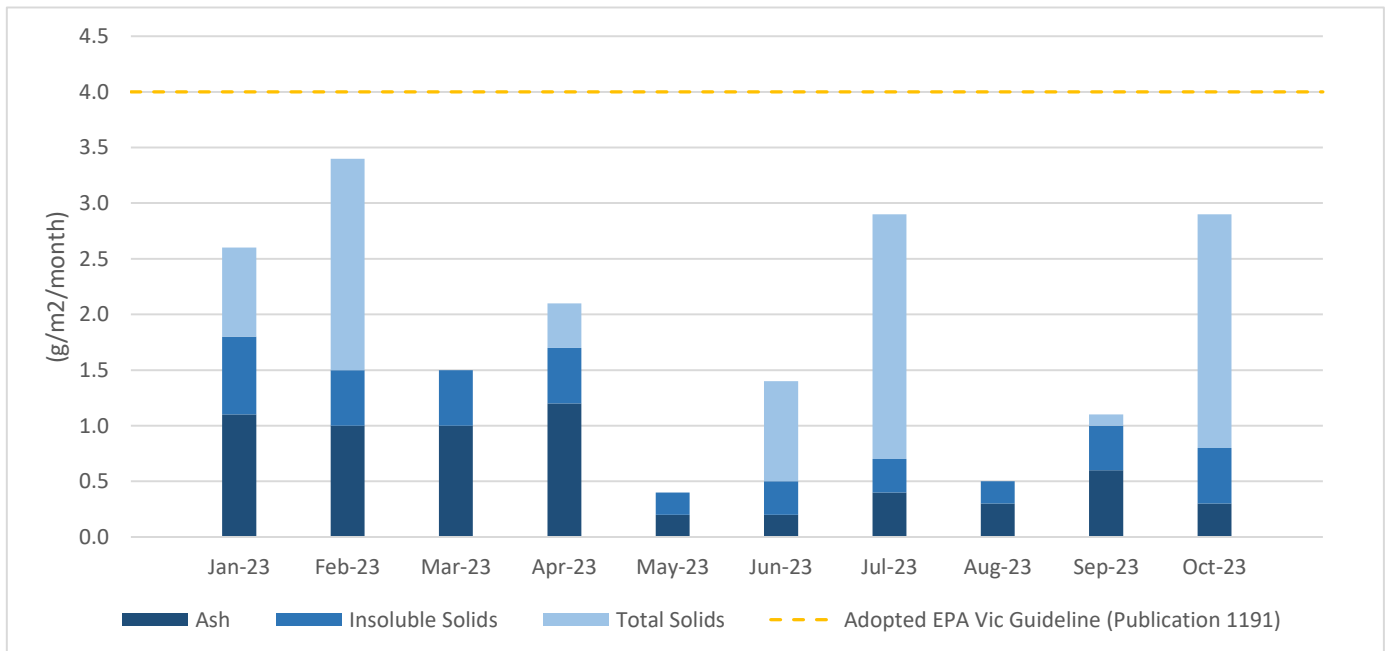
Collection Date: 9/10/2023

Sampling Duration: 32 days

Deposition Gauge ID	Ash Solids (g/m2/month)	Combustible Matter (g/m2/month)	Insoluble Solids (g/m2/month)	Soluble Solids (g/m2/month)	Total Solids (g/m2/month)	% Mass (Insoluble)
GGC	0.3	0.4	0.8	2.1	2.9	N/A
North	0.5	0.4	0.9	< 0.1	0.9	33%
East	0.3	0.3	0.6	< 0.1	0.6	22%
South	0.3	0.3	0.5	< 0.1	0.5	19%
West	0.3	0.4	0.7	< 0.1	0.7	26%



■ Ash (g/m2/month) ■ Insoluble Solids (g/m2/month)



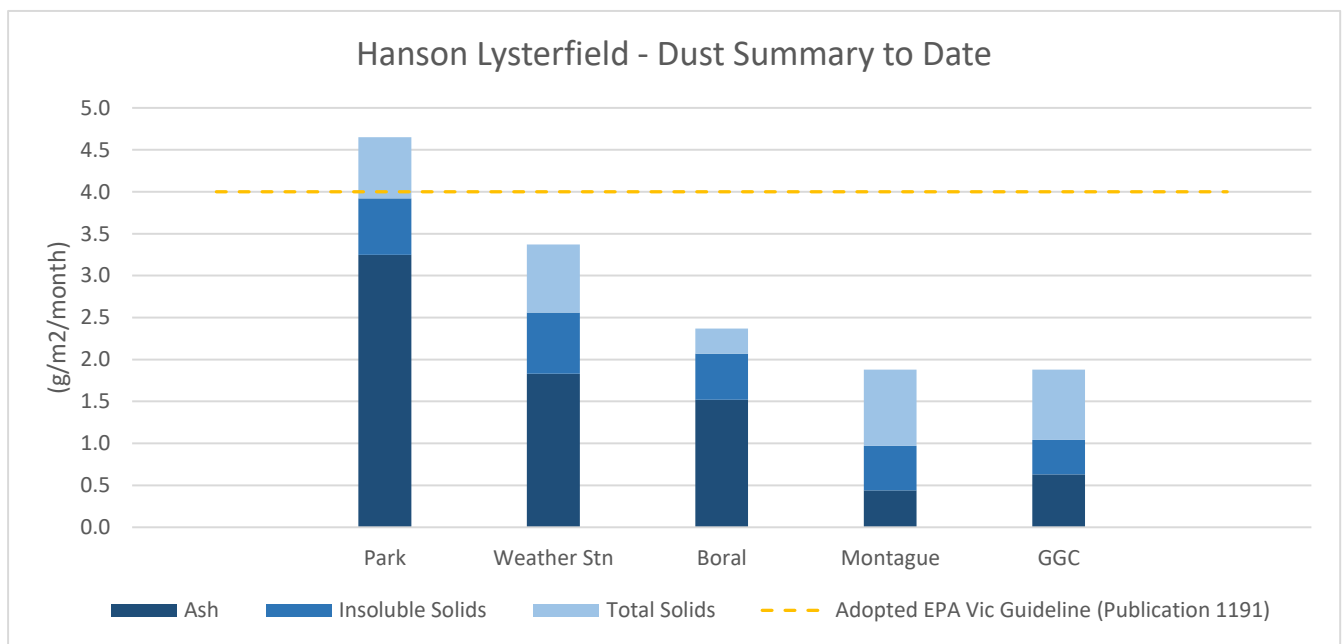
Comments:

# Hanson Lysterfield - Dust Summary to Date

Jan-23 to Oct-23

Report No: 1032700

Deposition Gauge ID	Ash Solids (g/m <sup>2</sup> /month)	Combustible Matter (g/m <sup>2</sup> /month)	Insoluble Solids (g/m <sup>2</sup> /month)	Soluble Solids (g/m <sup>2</sup> /month)	Total Solids (g/m <sup>2</sup> /month)	Volume (mL)
Park	3.3	0.7	3.9	0.8	4.7	1179
Weather Stn	1.8	0.7	2.6	0.8	3.4	1183
Boral	1.5	0.6	2.1	0.3	2.4	1164
Montague	0.4	0.6	1.0	0.9	1.9	1143
GGC	0.6	0.4	1.0	0.9	1.9	1197



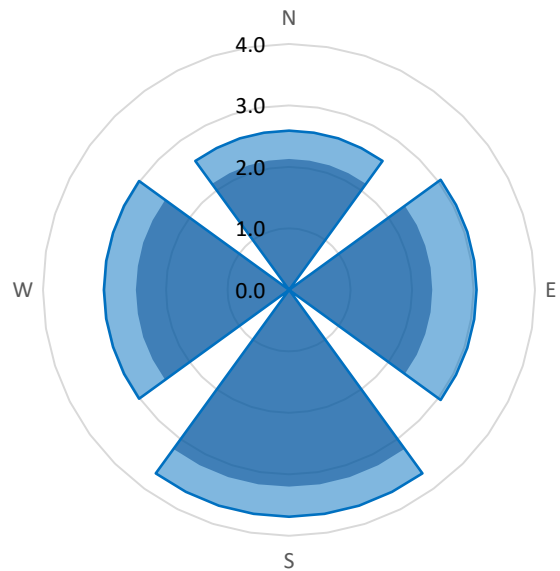
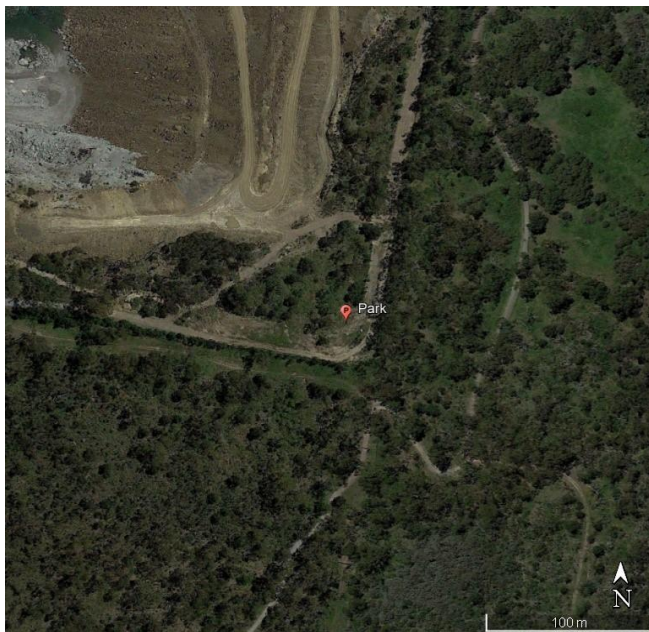
# Hanson Lysterfield Park - Summary to Date

Jan-23 to Oct-23

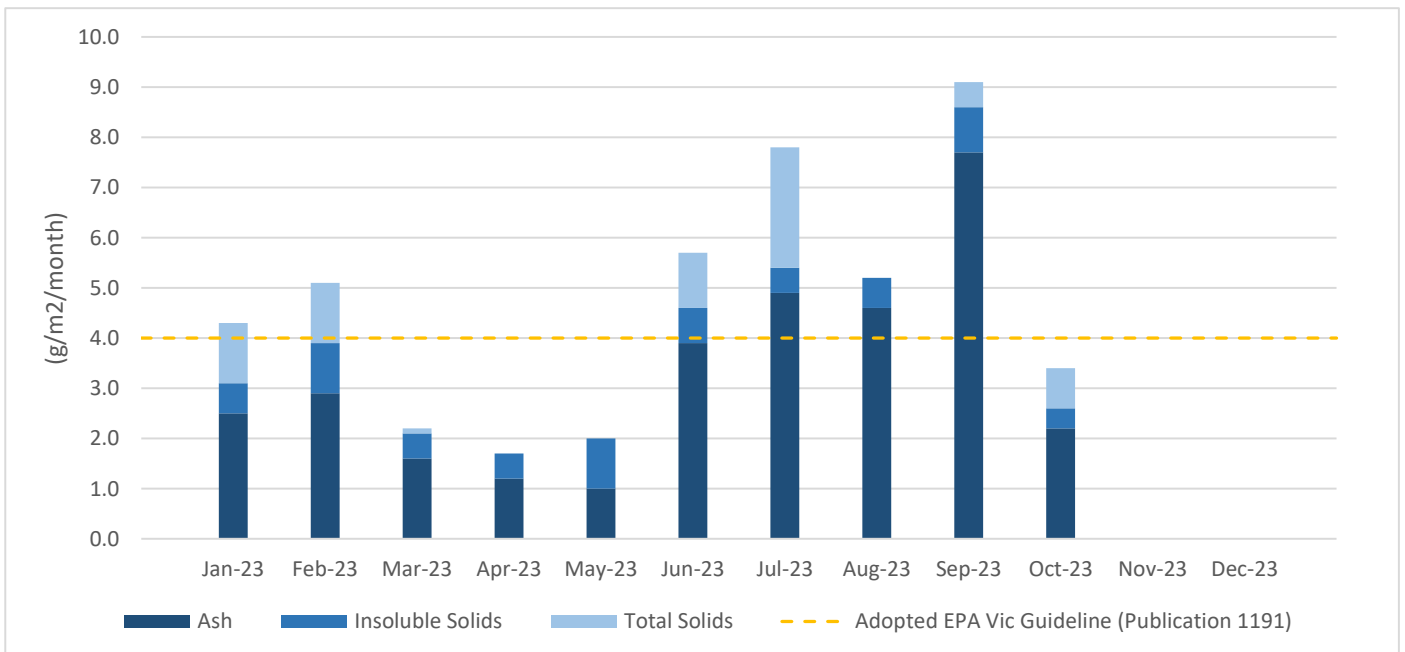
Report No: 1032700

Location: -37.945637, 145.265423

Deposition Gauge ID	Ash Solids (g/m2/month)	Combustible Matter (g/m2/month)	Insoluble Solids (g/m2/month)	Soluble Solids (g/m2/month)	Total Solids (g/m2/month)	% Mass (Insoluble)
Park	3.3	0.7	3.9	0.8	4.7	N/A
North	2.1	0.5	2.6	< 0.1	2.6	21%
East	2.3	0.7	3.1	< 0.1	3.1	25%
South	3.2	0.5	3.7	< 0.1	3.7	30%
West	2.5	0.5	3.0	< 0.1	3.0	24%



■ Ash (g/m2/month) ■ Insoluble Solids (g/m2/month)



Comments:



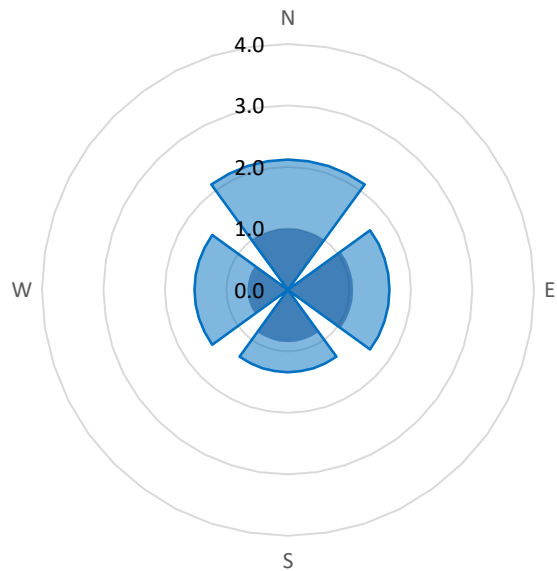
# Hanson Lysterfield Weather Stn-Summary to Date

Jan-23 to Oct-23

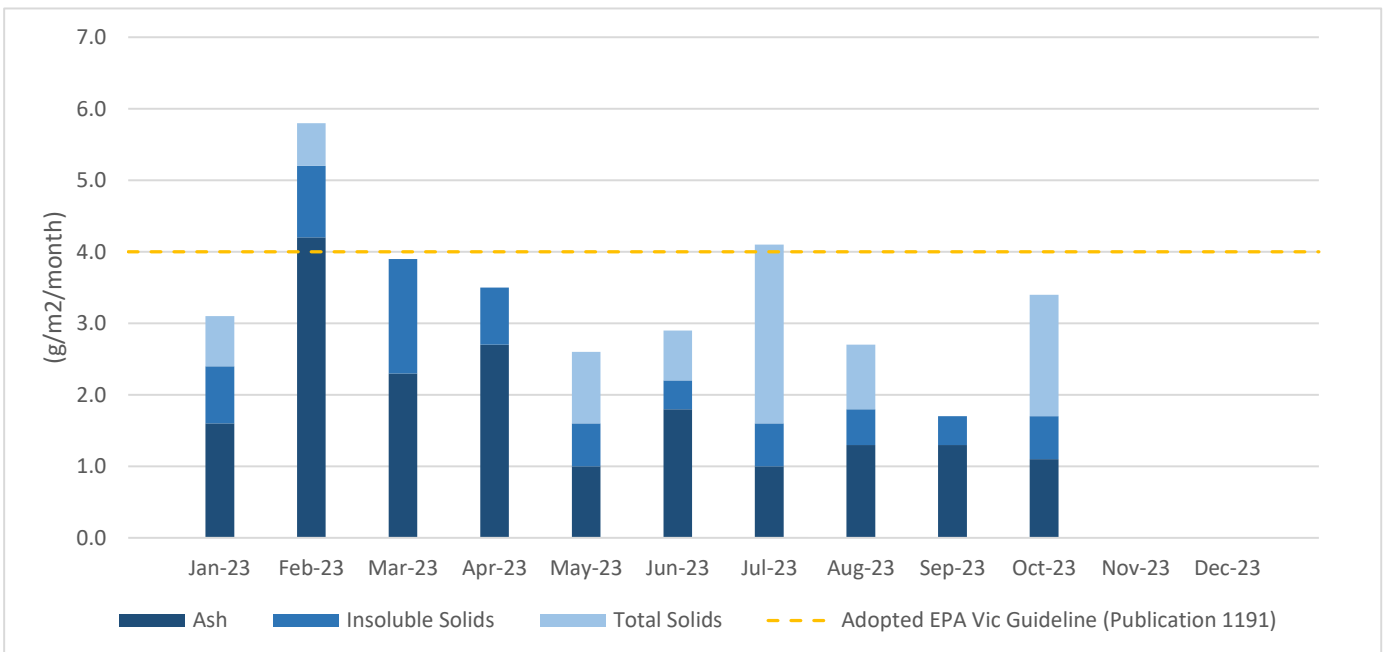
Report No: 1032700

Location: -37.940699, 145.259292

Deposition Gauge ID	Ash Solids (g/m2/month)	Combustible Matter (g/m2/month)	Insoluble Solids (g/m2/month)	Soluble Solids (g/m2/month)	Total Solids (g/m2/month)	% Mass (Insoluble)
Weather Stn	1.8	0.7	2.6	0.8	3.4	N/A
North	1.0	1.1	2.1	< 0.1	2.1	32%
East	1.1	0.6	1.7	< 0.1	1.7	25%
South	0.9	0.5	1.3	< 0.1	1.3	20%
West	0.7	0.9	1.5	< 0.1	1.5	23%



■ Ash (g/m2/month) ■ Insoluble Solids (g/m2/month)



Comments:

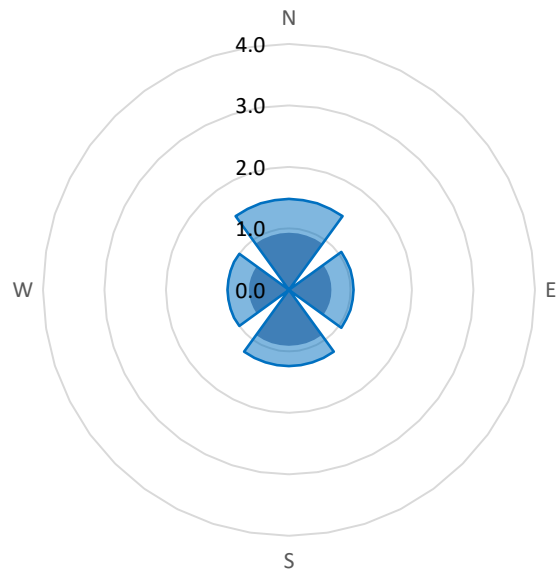
# Hanson Lysterfield Boral - Summary to Date

Jan-23 to Oct-23

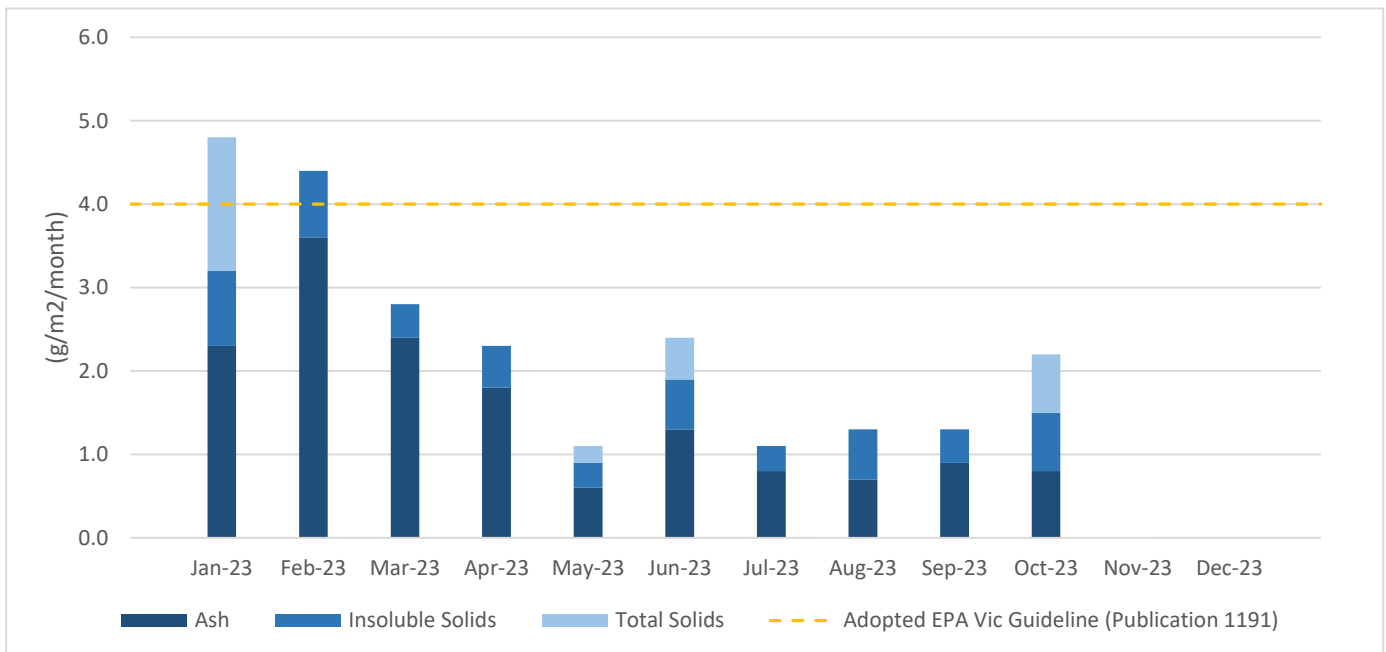
Report No: 1032700

Location: -37.934957, 145.267064

Deposition Gauge ID	Ash Solids (g/m2/month)	Combustible Matter (g/m2/month)	Insoluble Solids (g/m2/month)	Soluble Solids (g/m2/month)	Total Solids (g/m2/month)	% Mass (Insoluble)
Boral	1.5	0.6	2.1	0.3	2.4	N/A
North	0.9	0.5	1.5	< 0.1	1.5	31%
East	0.7	0.4	1.1	< 0.1	1.1	22%
South	0.9	0.3	1.2	< 0.1	1.2	26%
West	0.7	0.4	1.0	< 0.1	1.0	21%



■ Ash (g/m2/month) ■ Insoluble Solids (g/m2/month)



Comments:

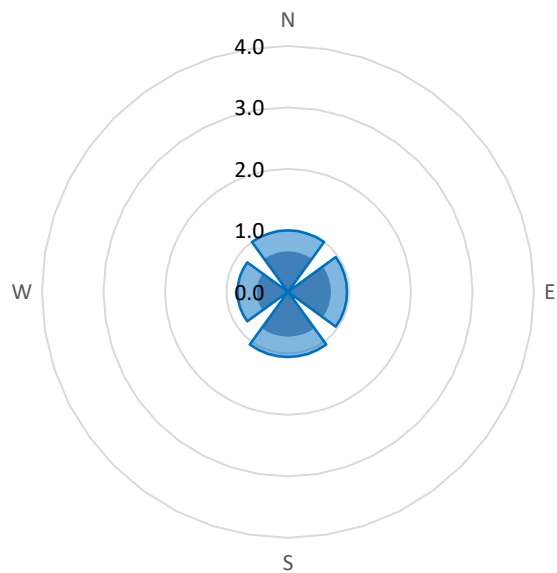
# Hanson Lysterfield Montague - Summary to Date

Jan-23 to Oct-23

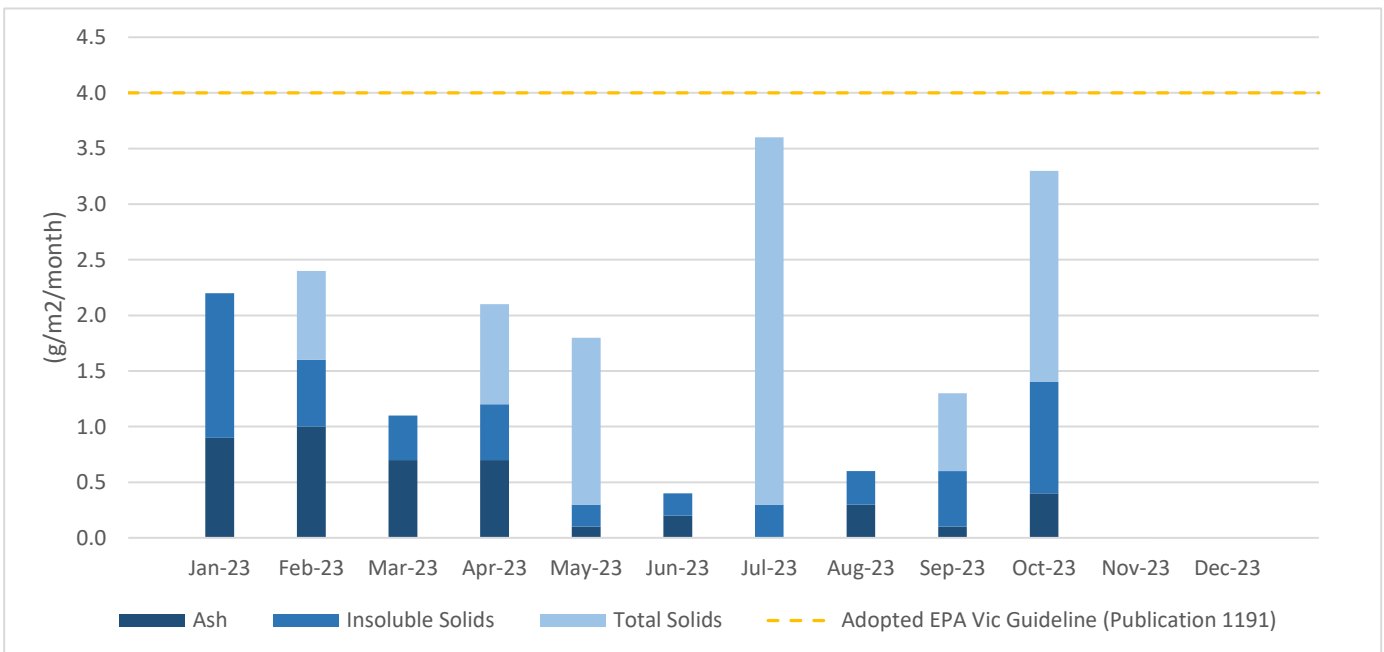
Report No: 1032700

Location: -37.932051, 145.257588

Deposition Gauge ID	Ash Solids (g/m2/month)	Combustible Matter (g/m2/month)	Insoluble Solids (g/m2/month)	Soluble Solids (g/m2/month)	Total Solids (g/m2/month)	% Mass (Insoluble)
Montague	0.4	0.6	1.0	0.9	1.9	N/A
North	0.7	0.4	1.0	< 0.1	1.0	26%
East	0.7	0.2	1.0	< 0.1	1.0	25%
South	0.7	0.3	1.1	< 0.1	1.1	28%
West	0.5	0.3	0.8	< 0.1	0.8	21%



■ Ash (g/m2/month) ■ Insoluble Solids (g/m2/month)



Comments:

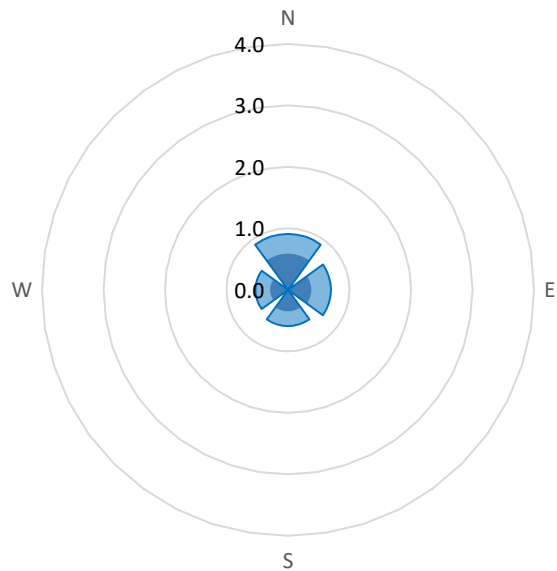
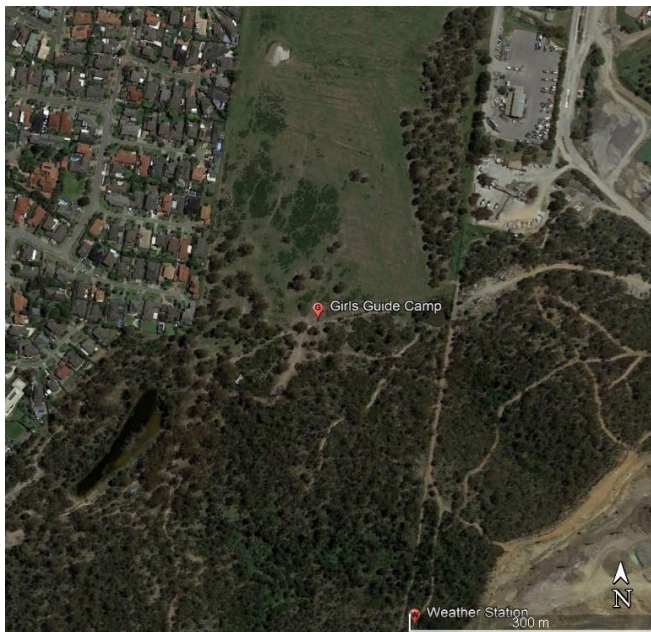
# Hanson Lysterfield Guide Camp - Summary to Date

Jan-23 to Oct-23

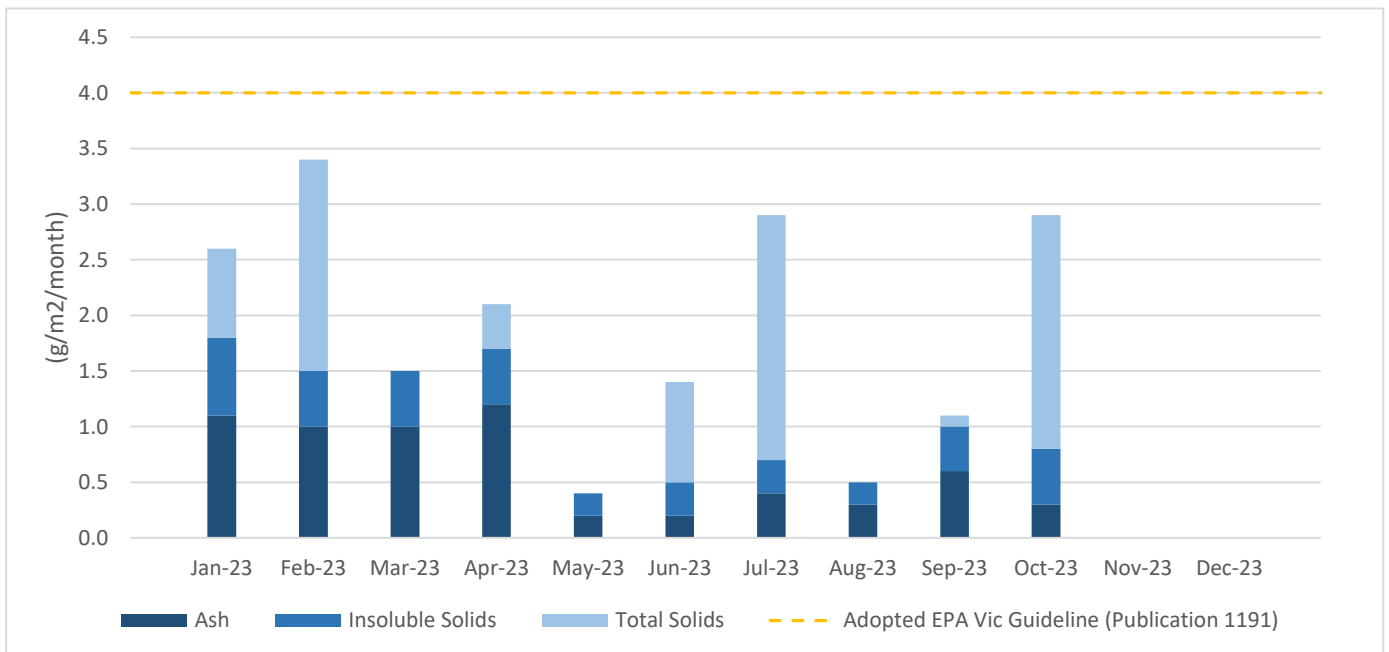
Report No: 1032700

Location: -37.937202, 145.257900

Deposition Gauge ID	Ash Solids (g/m2/month)	Combustible Matter (g/m2/month)	Insoluble Solids (g/m2/month)	Soluble Solids (g/m2/month)	Total Solids (g/m2/month)	% Mass (Insoluble)
GGC	0.6	0.4	1.0	0.9	1.9	N/A
North	0.6	0.3	0.9	< 0.1	0.9	33%
East	0.4	0.3	0.7	< 0.1	0.7	26%
South	0.4	0.3	0.6	< 0.1	0.6	22%
West	0.3	0.3	0.5	< 0.1	0.5	19%



■ Ash (g/m2/month) ■ Insoluble Solids (g/m2/month)



Comments: