

Hanson Lysterfield - Dust Summary

Sep-23

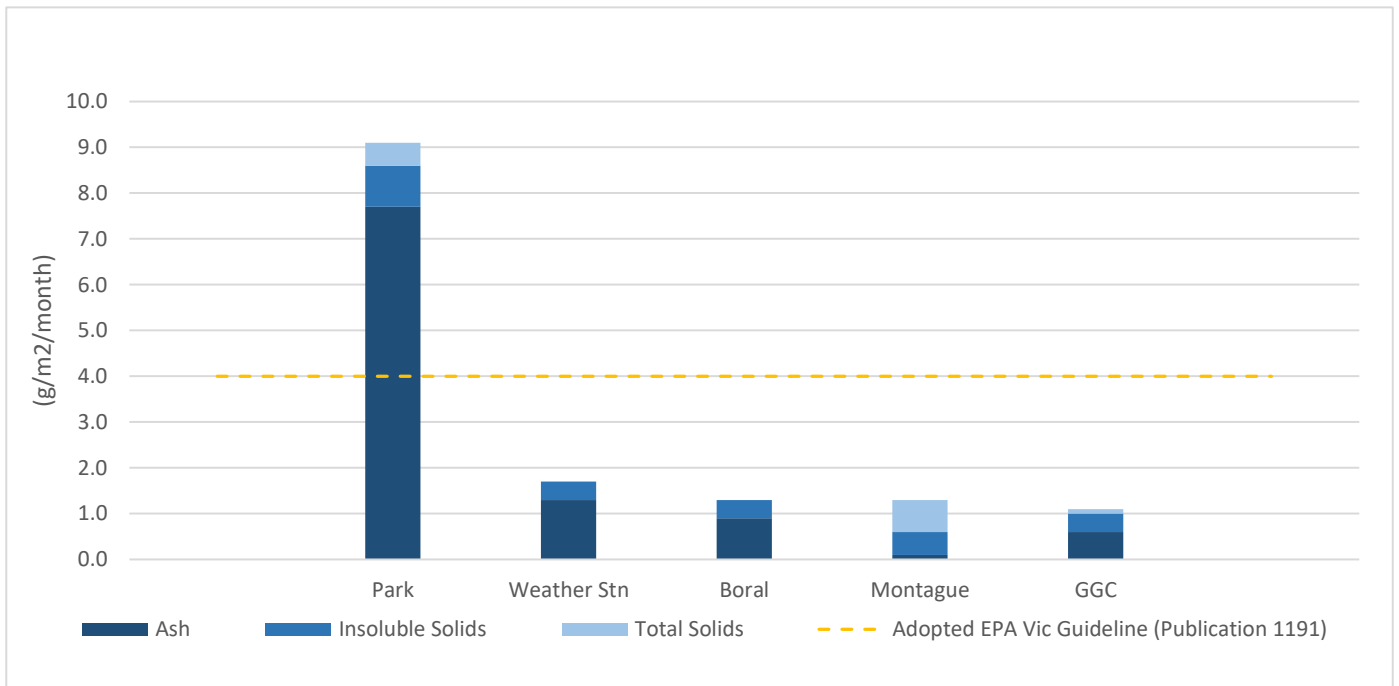
Report No: 1024015

Set Up Date: 8/08/2023

Collection Date: 7/09/2023

Sampling Duration: 30 days

Deposition Gauge ID	Ash Solids (g/m2/month)	Combustible Matter (g/m2/month)	Insoluble Solids (g/m2/month)	Soluble Solids (g/m2/month)	Total Solids (g/m2/month)	Volume (mL)
Park	7.7	0.9	8.6	0.6	9.1	1300
Weather Stn	1.3	0.4	1.7	< 0.1	1.7	1200
Boral	0.9	0.4	1.3	< 0.1	1.3	1200
Montague	0.1	0.5	0.6	0.7	1.3	1200
GGC	0.6	0.4	1.0	0.2	1.1	1300

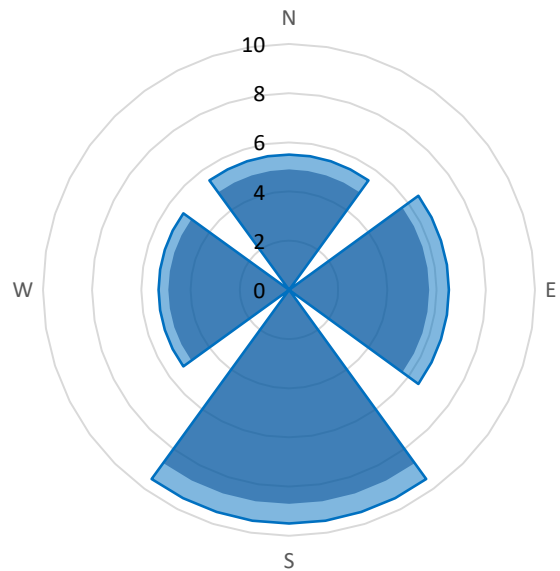


Hanson Lysterfield - Park

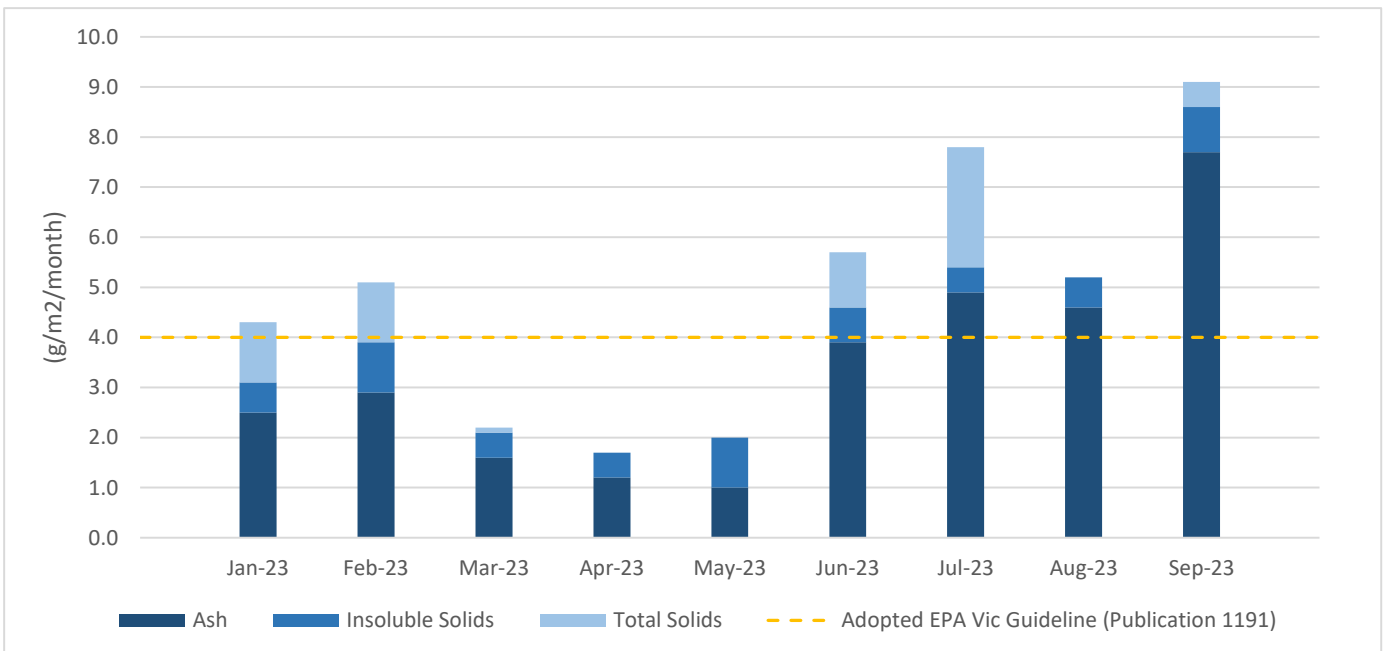
Sep-23
 Report No: 1024015
 Location: -37.945637, 145.265423

Set Up Date: 8/08/2023
 Collection Date: 7/09/2023
 Sampling Duration: 30 days

Deposition Gauge ID	Ash Solids (g/m2/month)	Combustible Matter (g/m2/month)	Insoluble Solids (g/m2/month)	Soluble Solids (g/m2/month)	Total Solids (g/m2/month)	% Mass (Insoluble)
Park	7.7	0.9	8.6	0.6	9.1	N/A
North	4.9	0.6	5.5	< 0.1	5.5	21%
East	5.7	0.7	6.5	< 0.1	6.5	24%
South	8.7	0.8	9.5	< 0.1	9.5	35%
West	4.9	0.4	5.3	< 0.1	5.3	20%



■ Ash (g/m2/month) ■ Insoluble Solids (g/m2/month)



Comments:

Hanson Lysterfield - Weather Station

Sep-23

Report No: 1024015

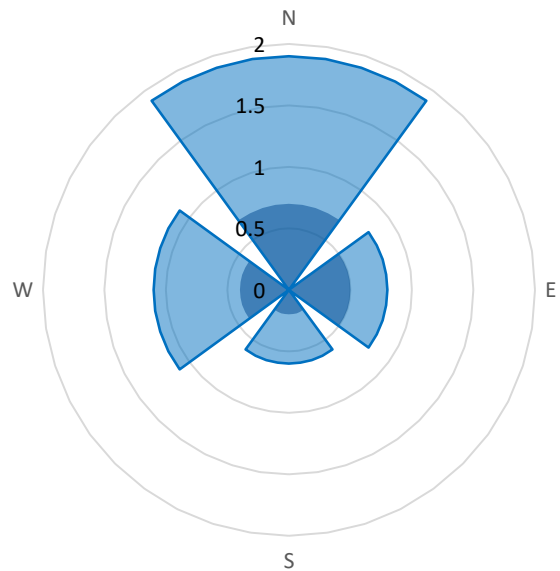
Location: -37.940699, 145.259292

Set Up Date: 8/08/2023

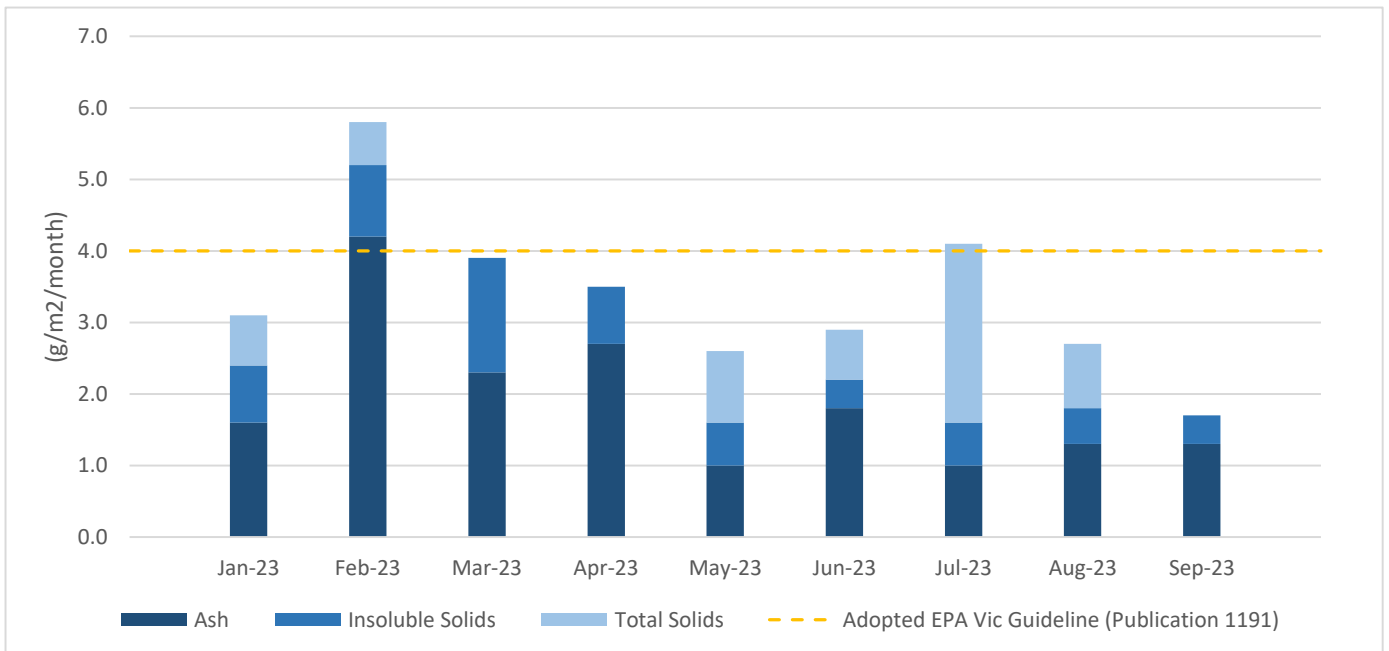
Collection Date: 7/09/2023

Sampling Duration: 30 days

Deposition Gauge ID	Ash Solids (g/m2/month)	Combustible Matter (g/m2/month)	Insoluble Solids (g/m2/month)	Soluble Solids (g/m2/month)	Total Solids (g/m2/month)	% Mass (Insoluble)
Weather Stn	1.3	0.4	1.7	< 0.1	1.7	N/A
North	0.7	1.1	1.9	< 0.1	1.9	43%
East	0.5	0.3	0.8	< 0.1	0.8	18%
South	0.2	0.4	0.6	< 0.1	0.6	14%
West	0.4	0.7	1.1	0.1	1.2	25%



■ Ash (g/m2/month) ■ Insoluble Solids (g/m2/month)



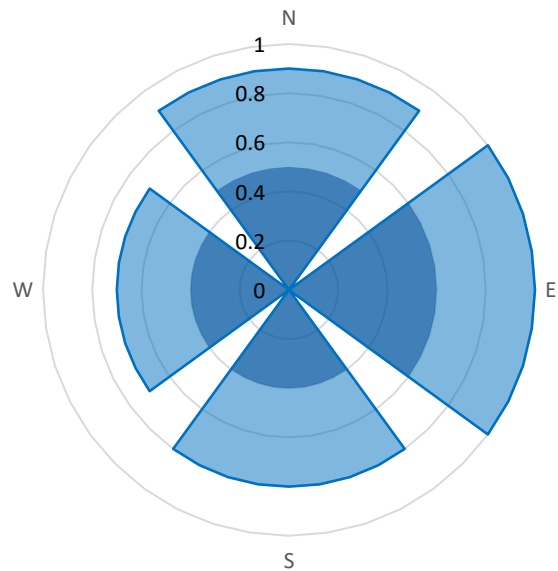
Comments:

Hanson Lysterfield - Boral

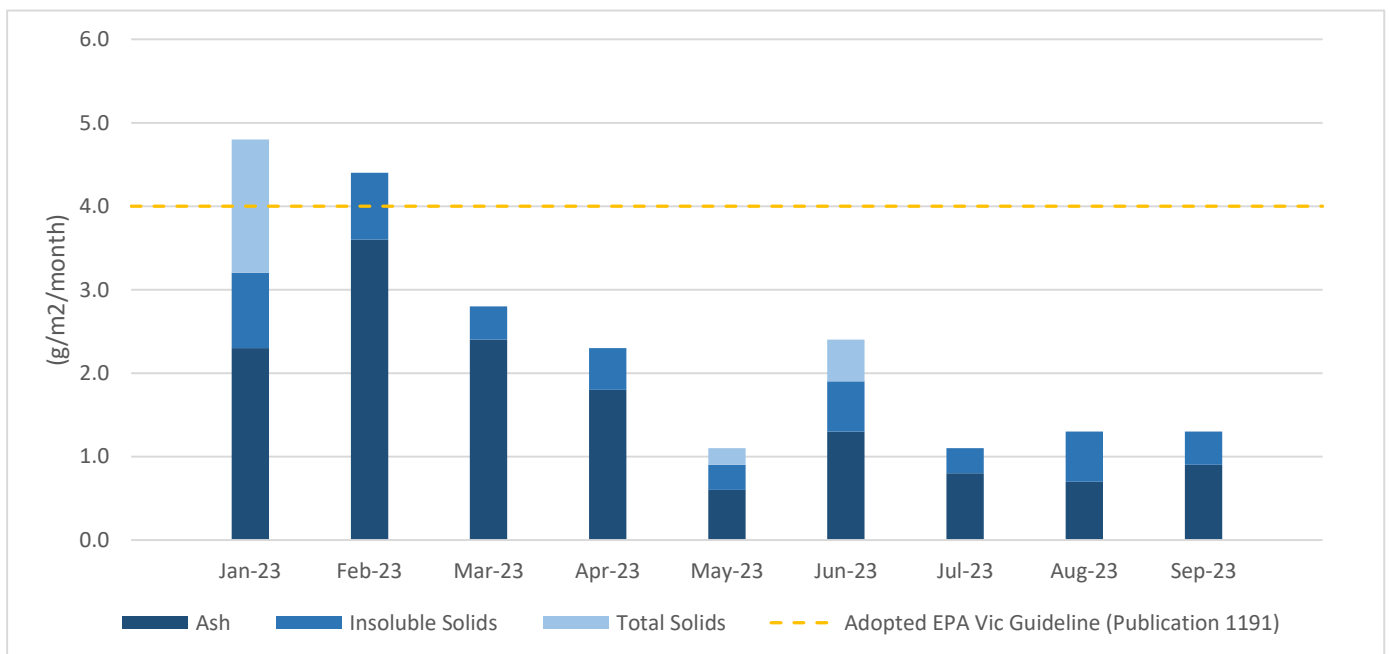
Sep-23
 Report No: 1024015
 Location: -37.934957, 145.267064

Set Up Date: 8/08/2023
 Collection Date: 7/09/2023
 Sampling Duration: 30 days

Deposition Gauge ID	Ash Solids (g/m2/month)	Combustible Matter (g/m2/month)	Insoluble Solids (g/m2/month)	Soluble Solids (g/m2/month)	Total Solids (g/m2/month)	% Mass (Insoluble)
Boral	0.9	0.4	1.3	< 0.1	1.3	N/A
North	0.5	0.4	0.9	< 0.1	0.9	26%
East	0.6	0.4	1.0	< 0.1	1.0	29%
South	0.4	0.3	0.8	< 0.1	0.8	24%
West	0.4	0.3	0.7	< 0.1	0.7	21%



■ Ash (g/m2/month) ■ Insoluble Solids (g/m2/month)



Comments:

Hanson Lysterfield - Montague

Sep-23

Set Up Date: 8/08/2023

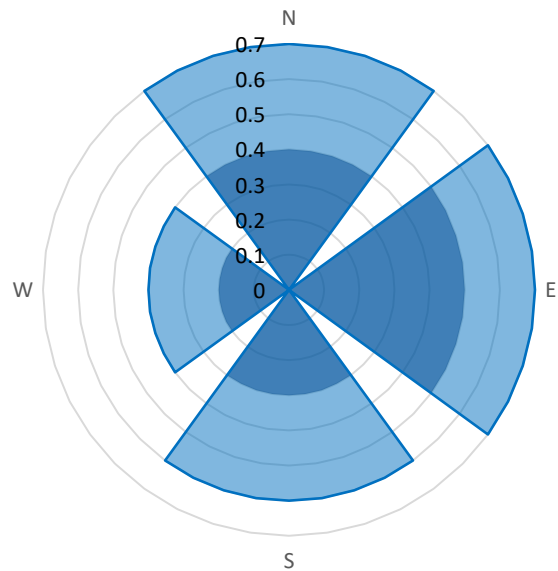
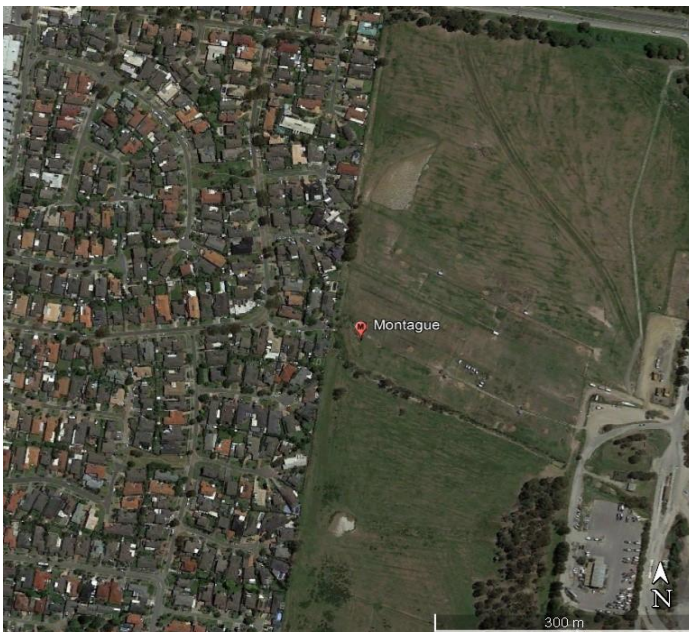
Report No: 1024015

Collection Date: 7/09/2023

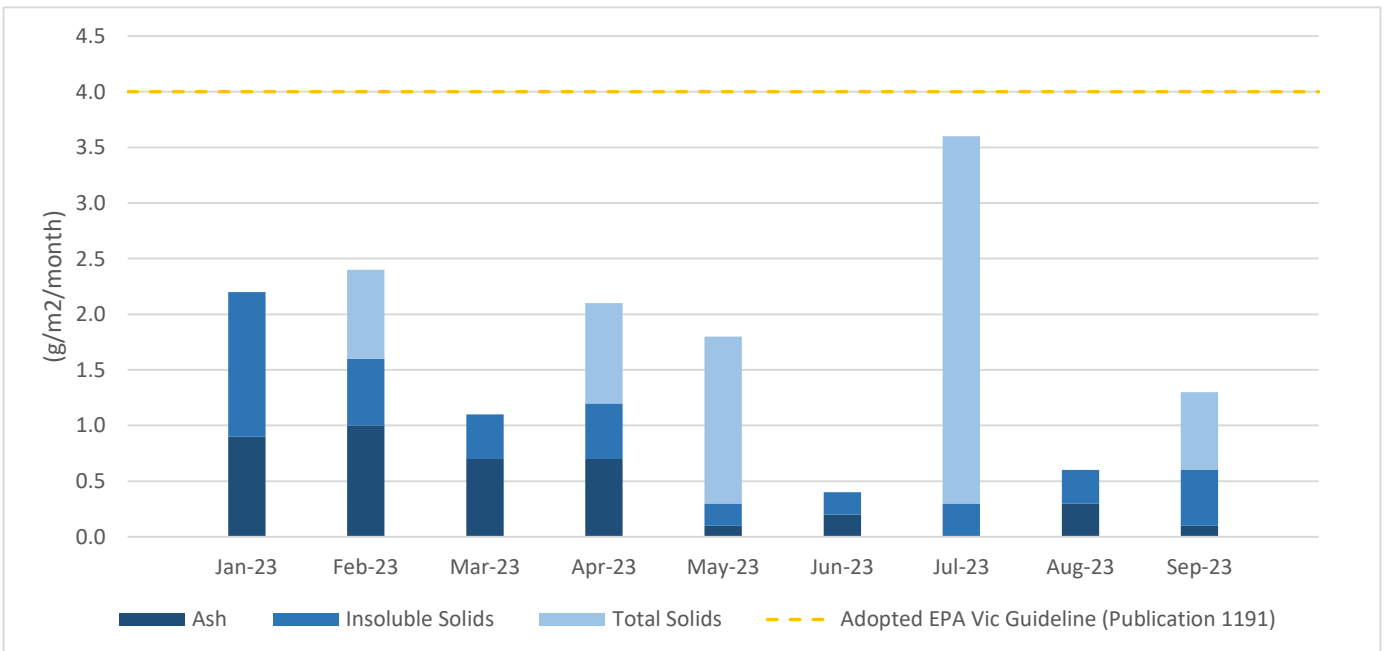
Location: -37.932051, 145.257588

Sampling Duration: 30 days

Deposition Gauge ID	Ash Solids (g/m2/month)	Combustible Matter (g/m2/month)	Insoluble Solids (g/m2/month)	Soluble Solids (g/m2/month)	Total Solids (g/m2/month)	% Mass (Insoluble)
Montague	0.1	0.5	0.6	0.7	1.3	N/A
North	0.4	0.3	0.7	< 0.1	0.7	29%
East	0.5	0.2	0.7	< 0.1	0.7	29%
South	0.3	0.3	0.6	< 0.1	0.6	25%
West	0.2	0.2	0.4	< 0.1	0.4	17%



■ Ash (g/m2/month) ■ Insoluble Solids (g/m2/month)



Comments:

Hanson Lysterfield - Girls Guide Camp

Sep-23

Report No: 1024015

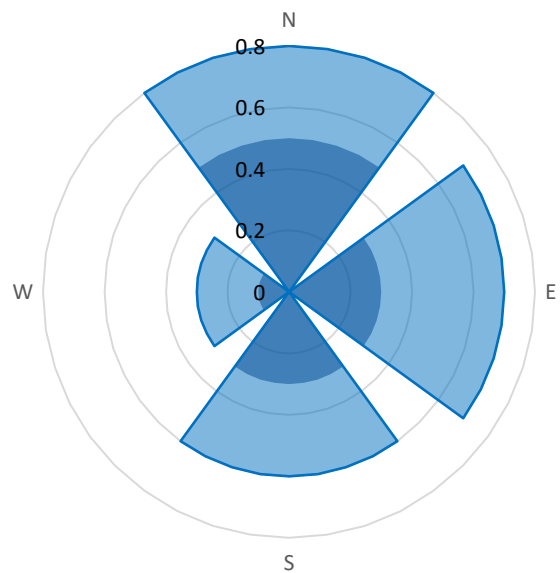
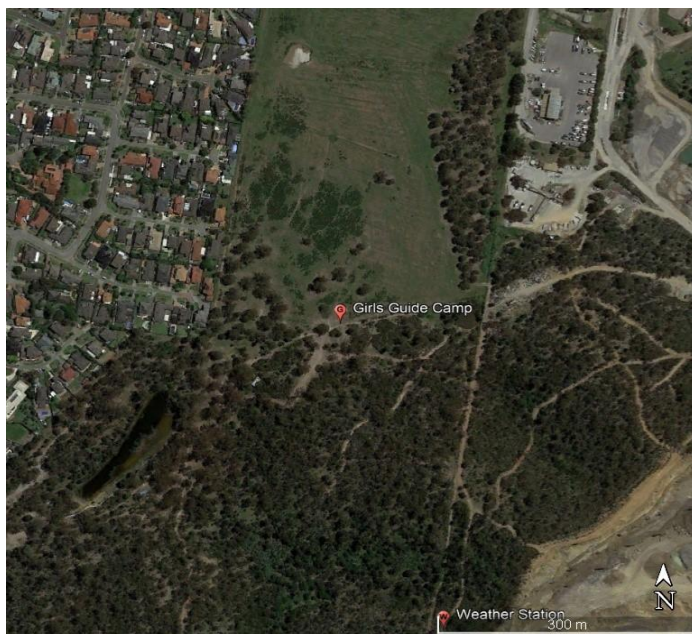
Location: -37.937202, 145.257900

Set Up Date: 8/08/2023

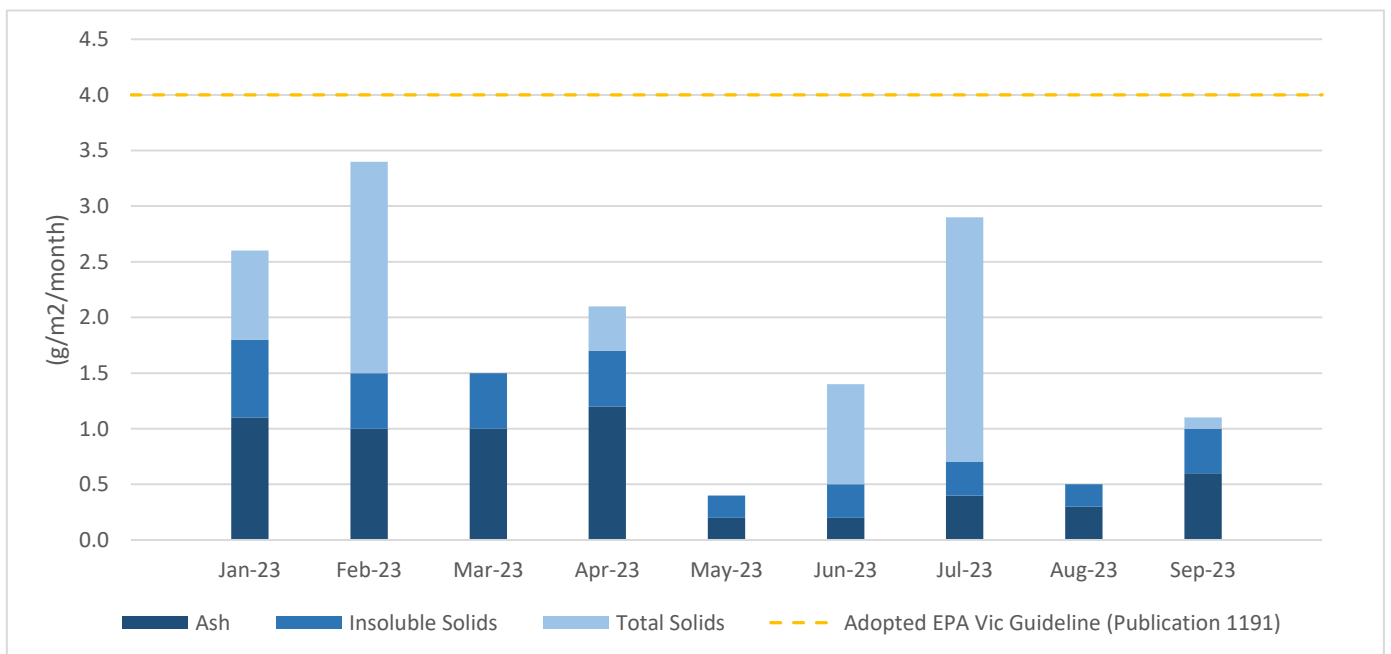
Collection Date: 7/09/2023

Sampling Duration: 30 days

Deposition Gauge ID	Ash Solids (g/m2/month)	Combustible Matter (g/m2/month)	Insoluble Solids (g/m2/month)	Soluble Solids (g/m2/month)	Total Solids (g/m2/month)	% Mass (Insoluble)
GGC	0.6	0.4	1.0	0.2	1.1	N/A
North	0.5	0.4	0.8	< 0.1	0.8	33%
East	0.3	0.4	0.7	< 0.1	0.7	29%
South	0.3	0.3	0.6	< 0.1	0.6	25%
West	0.1	0.2	0.3	< 0.1	0.3	13%



■ Ash (g/m2/month) ■ Insoluble Solids (g/m2/month)



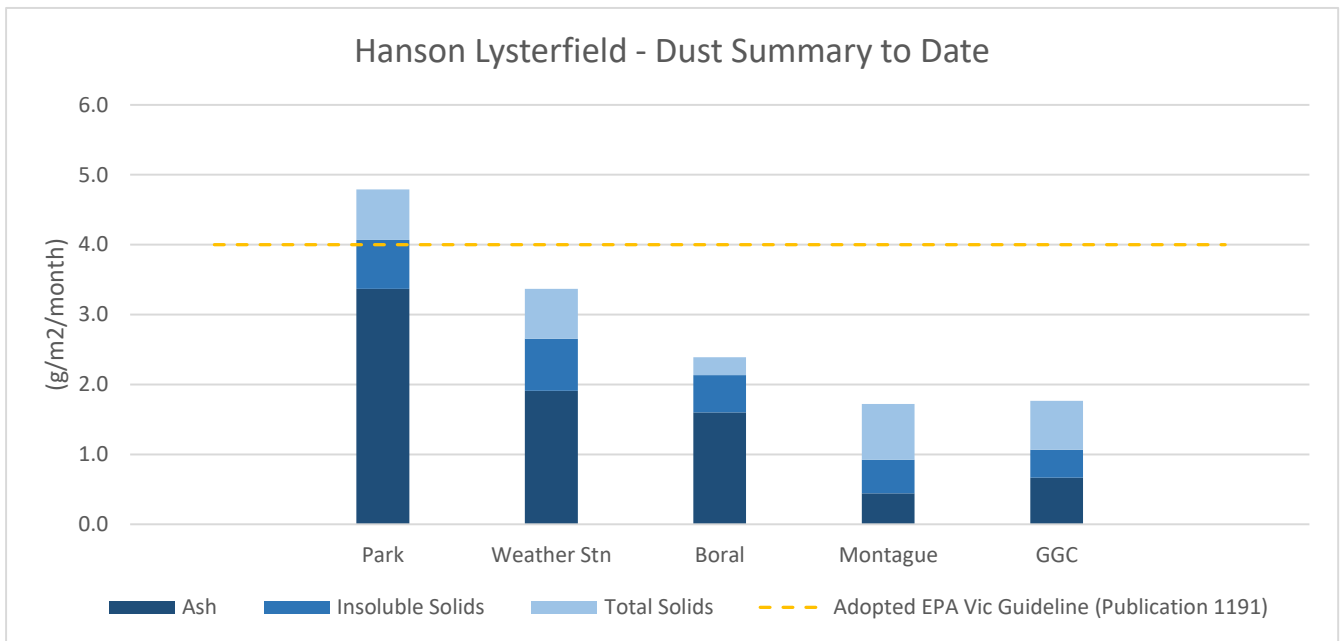
Comments:

Hanson Lysterfield - Dust Summary to Date

Jan-23 to Sep-23

Report No: 1015078

Deposition Gauge ID	Ash Solids (g/m2/month)	Combustible Matter (g/m2/month)	Insoluble Solids (g/m2/month)	Soluble Solids (g/m2/month)	Total Solids (g/m2/month)	Volume (mL)
Park	3.4	0.7	4.1	0.7	4.8	1154
Weather Stn	1.9	0.8	2.7	0.7	3.4	1148
Boral	1.6	0.5	2.1	0.3	2.4	1149
Montague	0.4	0.5	0.9	0.8	1.7	1148
GGC	0.7	0.4	1.1	0.7	1.8	1186



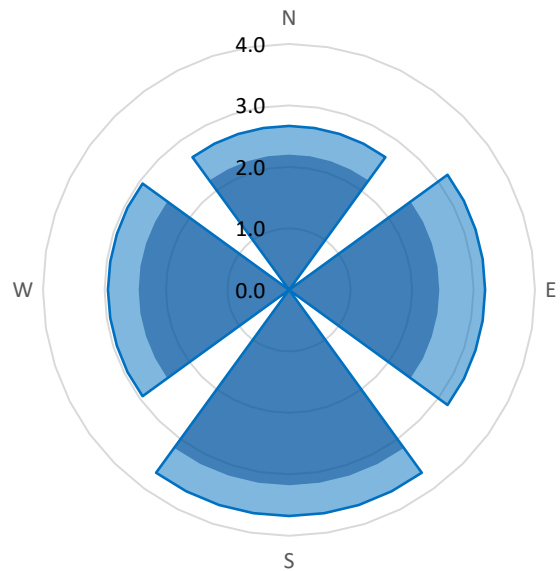
Hanson Lysterfield Park - Summary to Date

Jan-23 to Sep-23

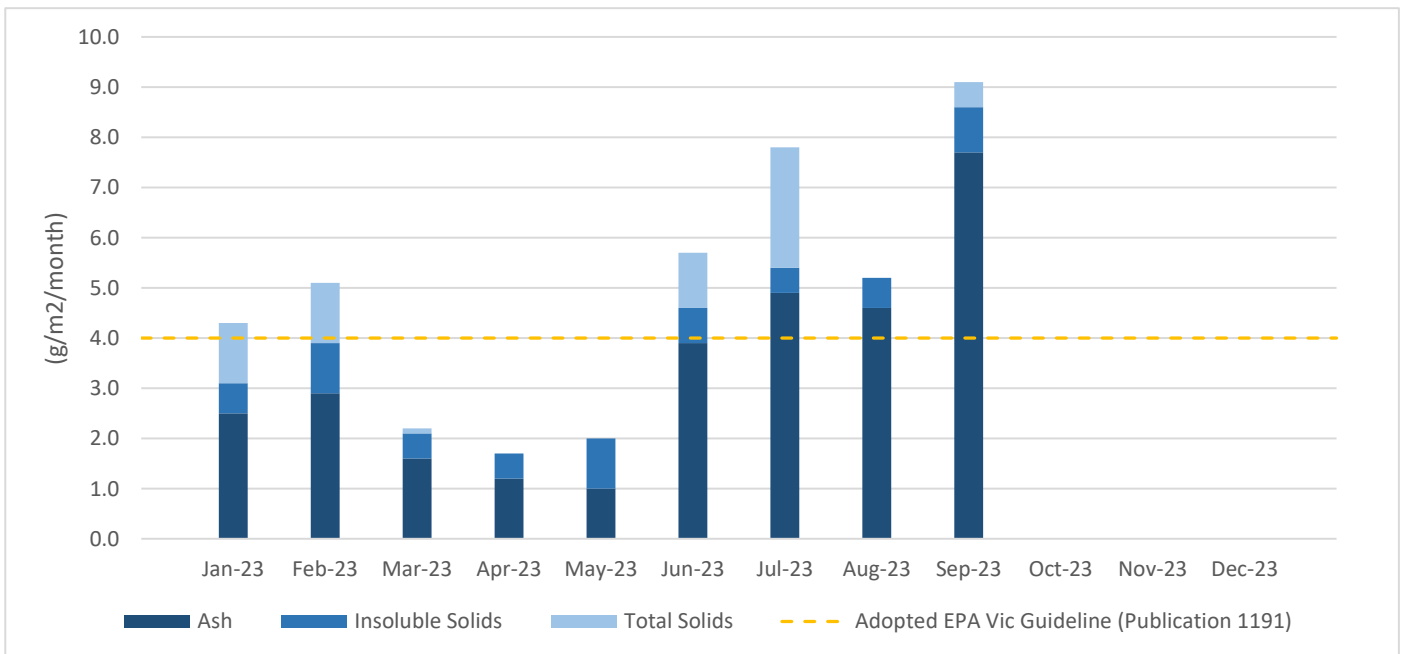
Report No: 1015078

Location: -37.945637, 145.265423

Deposition Gauge ID	Ash Solids (g/m2/month)	Combustible Matter (g/m2/month)	Insoluble Solids (g/m2/month)	Soluble Solids (g/m2/month)	Total Solids (g/m2/month)	% Mass (Insoluble)
Park	3.4	0.7	4.1	0.7	4.8	N/A
North	2.2	0.5	2.7	< 0.1	2.7	21%
East	2.4	0.7	3.2	< 0.1	3.2	26%
South	3.2	0.5	3.7	< 0.1	3.7	29%
West	2.4	0.5	2.9	< 0.1	2.9	24%



■ Ash (g/m2/month) ■ Insoluble Solids (g/m2/month)



Comments:

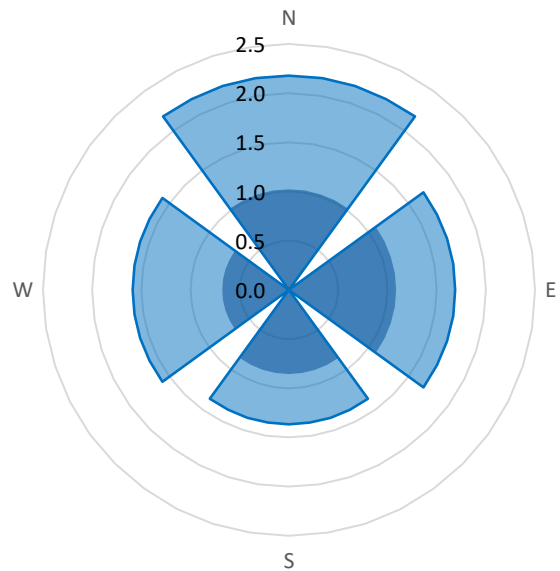
Hanson Lysterfield Weather Stn-Summary to Date

Jan-23 to Sep-23

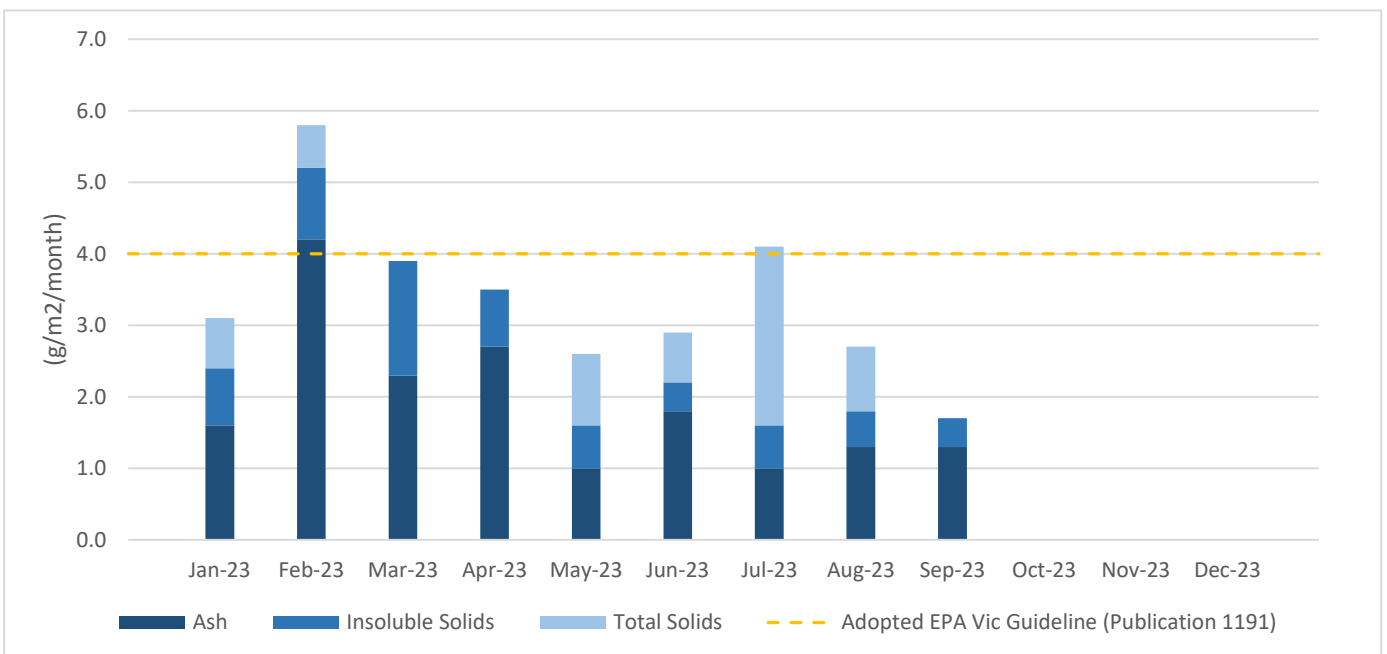
Report No: 1015078

Location: -37.940699, 145.259292

Deposition Gauge ID	Ash Solids (g/m2/month)	Combustible Matter (g/m2/month)	Insoluble Solids (g/m2/month)	Soluble Solids (g/m2/month)	Total Solids (g/m2/month)	% Mass (Insoluble)
Weather Stn	1.9	0.8	2.7	0.7	3.4	N/A
North	1.0	1.2	2.2	< 0.1	2.2	32%
East	1.1	0.6	1.7	< 0.1	1.7	25%
South	0.9	0.5	1.4	< 0.1	1.4	20%
West	0.7	0.9	1.6	< 0.1	1.6	23%



■ Ash (g/m2/month) ■ Insoluble Solids (g/m2/month)



Comments:

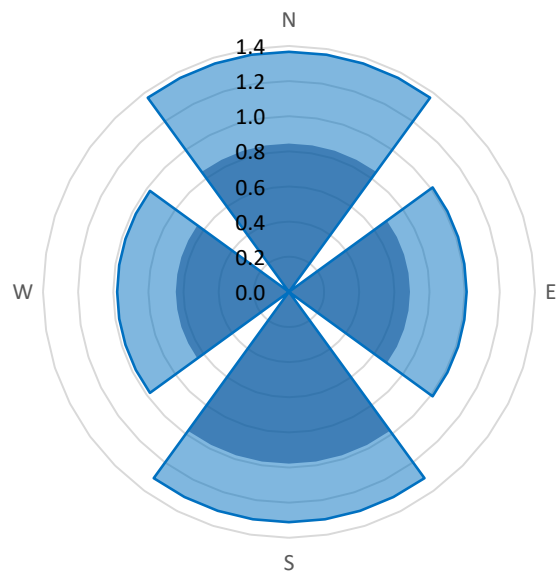
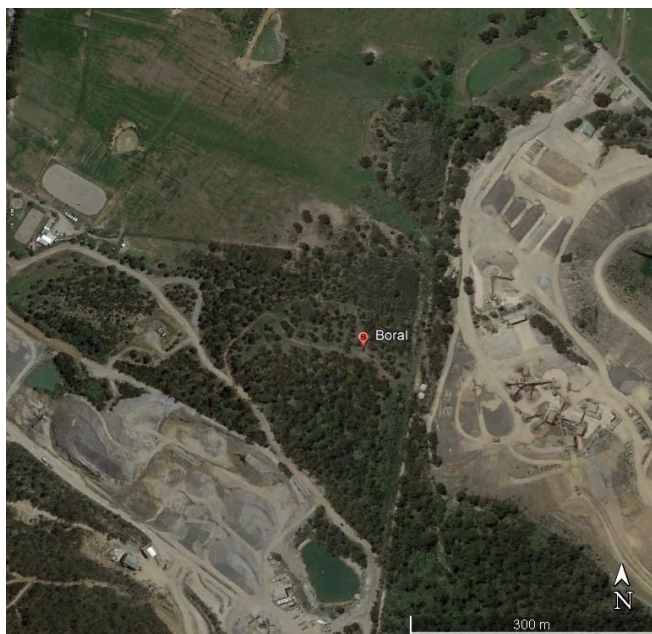
Hanson Lysterfield Boral - Summary to Date

Jan-23 to Sep-23

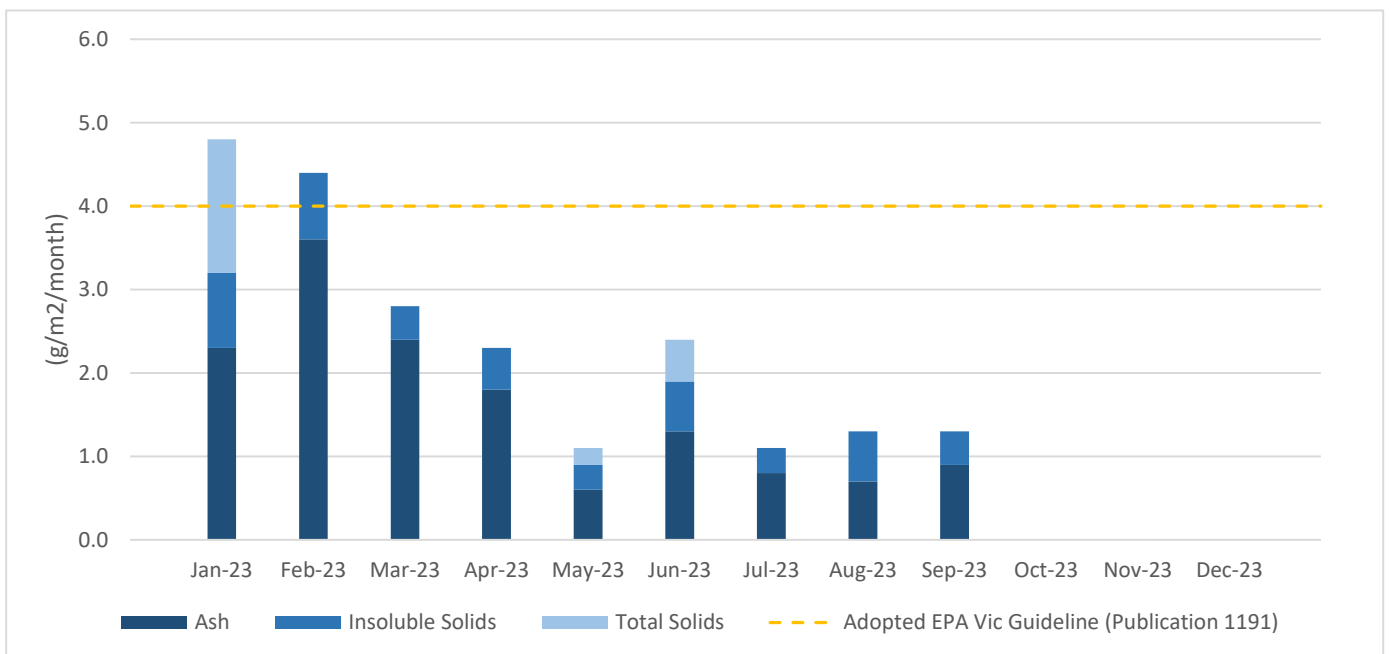
Report No: 1015078

Location: -37.934957, 145.267064

Deposition Gauge ID	Ash Solids (g/m2/month)	Combustible Matter (g/m2/month)	Insoluble Solids (g/m2/month)	Soluble Solids (g/m2/month)	Total Solids (g/m2/month)	% Mass (Insoluble)
Boral	1.6	0.5	2.1	0.3	2.4	N/A
North	0.8	0.5	1.4	< 0.1	1.4	29%
East	0.7	0.4	1.0	< 0.1	1.0	22%
South	1.0	0.3	1.3	< 0.1	1.3	28%
West	0.6	0.3	1.0	< 0.1	1.0	21%



■ Ash (g/m2/month) ■ Insoluble Solids (g/m2/month)



Comments:

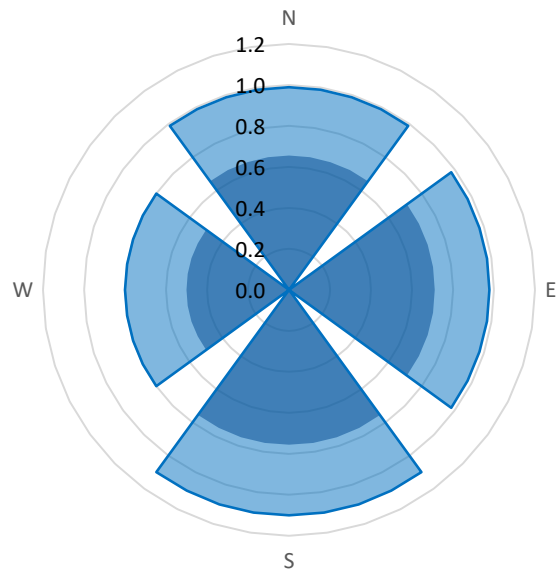
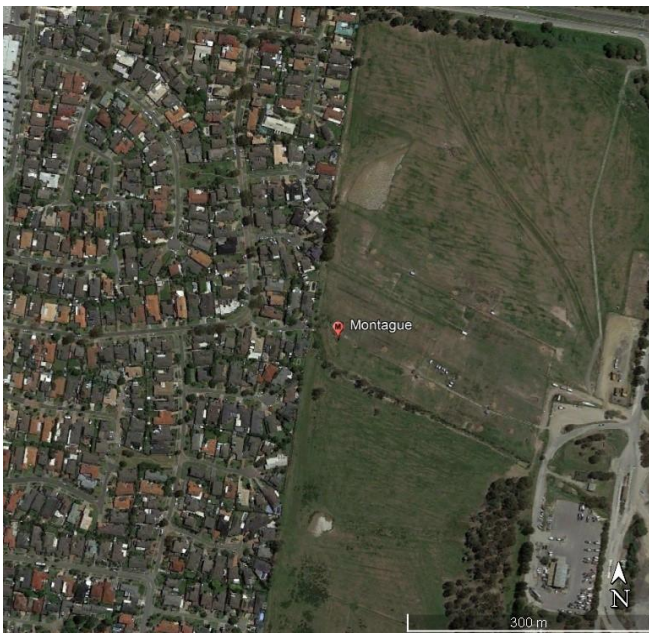
Hanson Lysterfield Montague - Summary to Date

Jan-23 to Sep-23

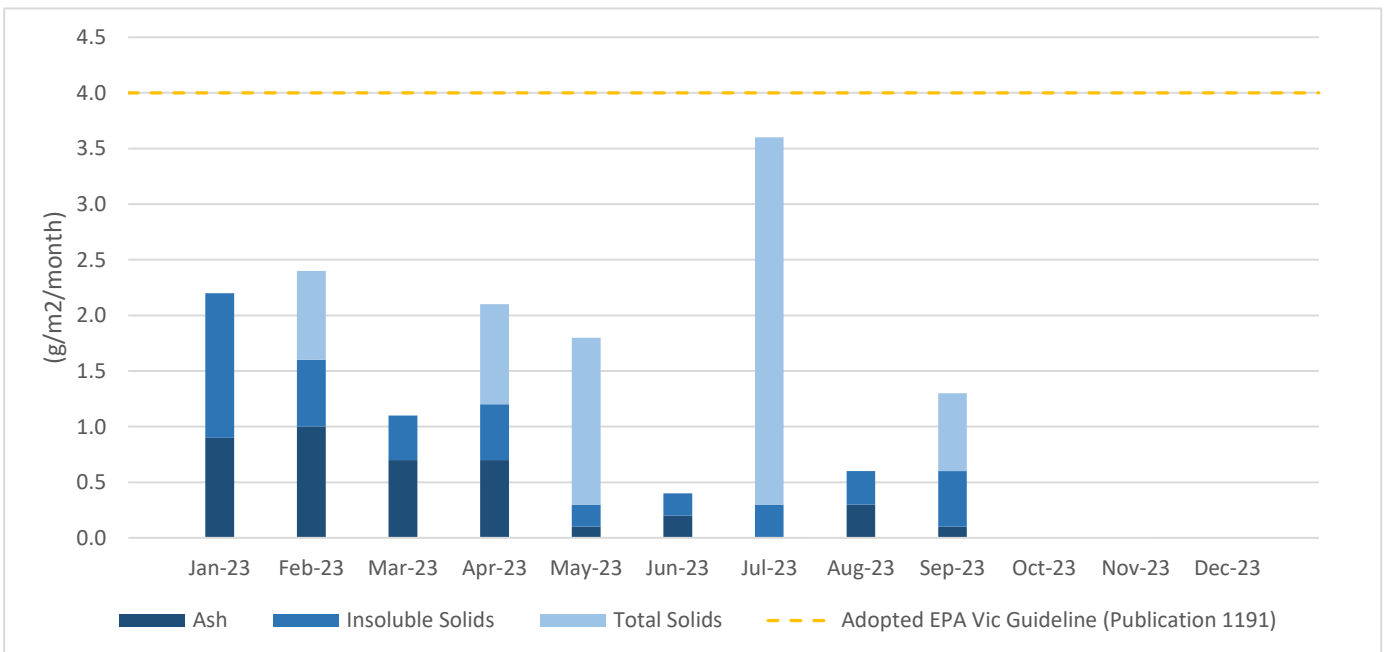
Report No: 1015078

Location: -37.932051, 145.257588

Deposition Gauge ID	Ash Solids (g/m2/month)	Combustible Matter (g/m2/month)	Insoluble Solids (g/m2/month)	Soluble Solids (g/m2/month)	Total Solids (g/m2/month)	% Mass (Insoluble)
Montague	0.4	0.5	0.9	0.8	1.7	N/A
North	0.7	0.3	1.0	< 0.1	1.0	26%
East	0.7	0.2	1.0	< 0.1	1.0	25%
South	0.8	0.3	1.1	< 0.1	1.1	28%
West	0.5	0.3	0.8	< 0.1	0.8	21%



■ Ash (g/m2/month) ■ Insoluble Solids (g/m2/month)



Comments:

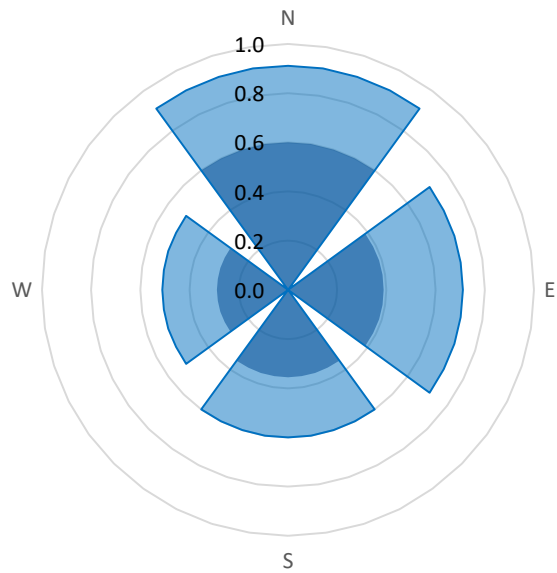
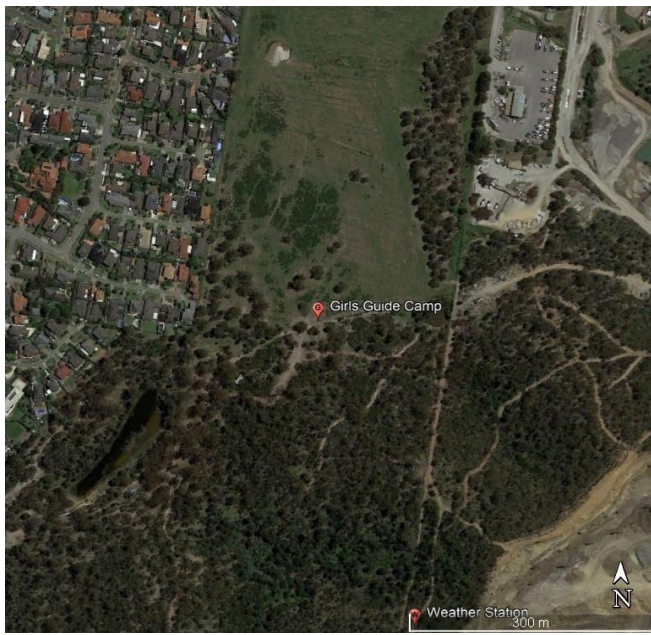
Hanson Lysterfield Guide Camp - Summary to Date

Jan-23 to Sep-23

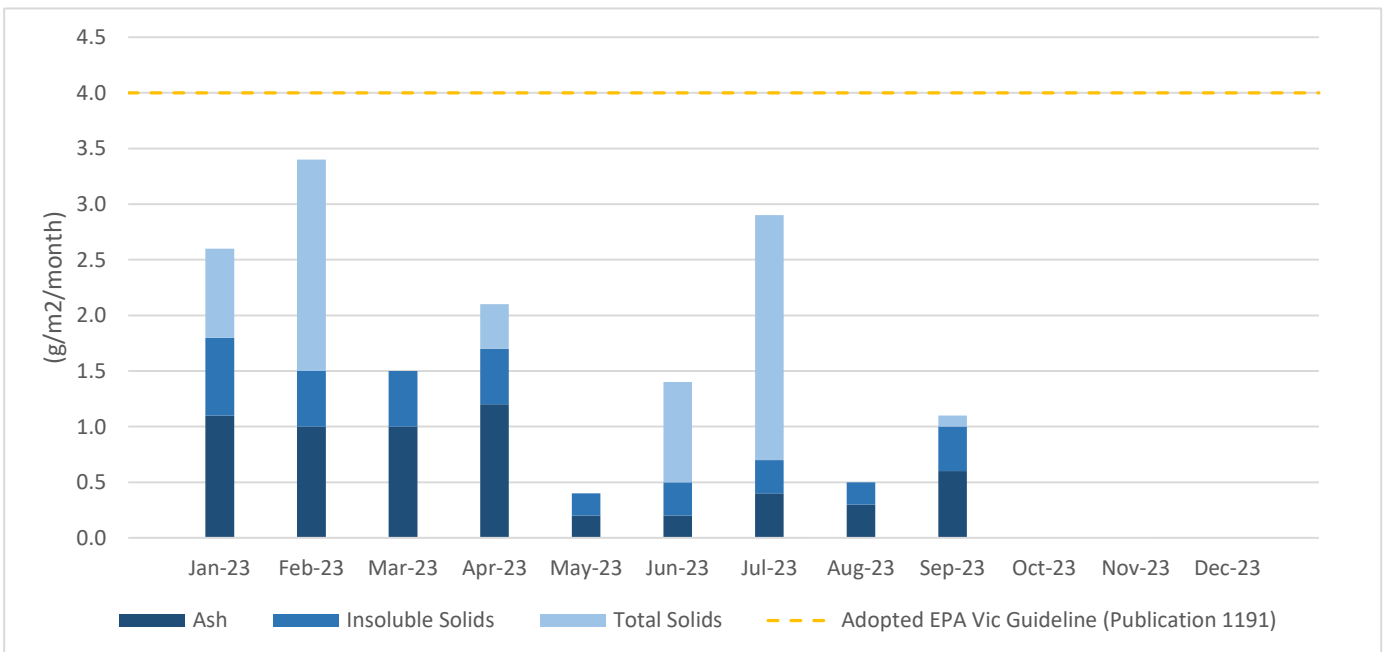
Report No: 1015078

Location: -37.937202, 145.257900

Deposition Gauge ID	Ash Solids (g/m2/month)	Combustible Matter (g/m2/month)	Insoluble Solids (g/m2/month)	Soluble Solids (g/m2/month)	Total Solids (g/m2/month)	% Mass (Insoluble)
GGC	0.7	0.4	1.1	0.7	1.8	N/A
North	0.6	0.3	0.9	< 0.1	0.9	33%
East	0.4	0.3	0.7	< 0.1	0.7	26%
South	0.4	0.3	0.6	< 0.1	0.6	22%
West	0.3	0.2	0.5	< 0.1	0.5	19%



■ Ash (g/m2/month) ■ Insoluble Solids (g/m2/month)



Comments: