

Summary of Noise Monitoring 7 & 8 June 2021	
Premise Details	Hanson – Brandy Hill Quarry
Address	Off Seaham Road Seaham NSW 2324
Licensee	Hanson Construction Materials Pty Ltd
EPL Number	1879
EPL Location	https://apps.epa.nsw.gov.au/prpoeoapp/ViewPOEOLicence.aspx?DOCID=152351&SYSUID=1&LICID=1879

The monitoring report is to satisfy the requirements of Section 66 (6) of the *Protection of Environment and Operations Act 1997*, to make available, within 14 days of request, any monitoring data that relates to pollution under an Environmental Protection Licence.

The monitoring of pollutants provided in this report is undertaken as per the requirements of Environment Protection Licence 1879 (EPL 1879 – Brandy Hill Quarry)

This report provides environmental monitoring data for Brandy Hill Quarry for the period 1 January 2016 to 30 January 2021.

Brandy Hill Quarry Information	
Premise Details	Hanson – Brandy Hill Quarry
Address	Off Seaham Road Seaham NSW 2324
Licensee	Hanson Construction Materials Pty Ltd
EPL Number	1879
EPL Location	https://apps.epa.nsw.gov.au/prpoeoapp/ViewPOEOLicence.aspx?DOCID=152351&SYSUID=1&LICID=1879

The monitoring report is to satisfy the requirements of Section 66 (6) of the *Protection of Environment and Operations Act 1997*, to make available, within 14 days of request, any monitoring data that relates to pollution under an Environmental Protection Licence.

The monitoring of pollutants provided in this report is undertaken as per the requirements of Environment Protection Licence 1879 (EPL 1879 – Brandy Hill Quarry)

This report provides environmental monitoring data for Brandy Hill Quarry for the period 1 January 2016 to 30 January 2021.

Monitoring data in this report relates to the monitoring undertaken in the reporting period for the following environmental pollutants:

- Deposited Dust (monthly monitoring)
- Water discharge
- Blasting
- Noise Monitoring (annual monitoring)

Discharge at Point 1, 2, 3 require the following monitoring requirements			
Pollutant	Units of measure	Frequency	Sampling Method
Particulates - Deposited Matter	grams per square metre per month	Monthly	AM- 19

Discharge at Point 4, 5, 6 require the following monitoring requirements			
Pollutant	Units of measure	Frequency	Sampling Method
Oil and Grease	micrograms per litre	Daily during any discharge	Special Method 1 (grab sample during discharge and visual inspection)
pH	pH	Daily during any discharge	Grab sample
TSS	milligrams per litre	Daily during any discharge	Grab sample

Blast (L5)

L5.2 The airblast overpressure level from blasting operations in or on the premises must not exceed:

- 115 dB (Lin Peak) for more than 5% of the total number of blasts during each reporting period; and
 - 120 dB (Lin Peak) at any time,
- at either monitoring point 7 or 8 as identified at condition P1.4.

L5.3 The ground vibration peak particle velocity from blasting operations carried out in or on the premises must not exceed:

- 5 mm/second for more than 5% of the total number of blasts carried out on the premises during each reporting period; and
 - 10 mm/second at any time,
- at either monitoring point 7 or 8 as identified at condition P1.4.

Noise (L2)

L2 Noise generated at the premises must not exceed the noise limits in the table below.

Locality	Location	Noise Limits dB(A) Day / Evening / Night Laeq(15 min)	Noise Limits dB(A) Night LA1(1 min)
R1	13B Giles Road, Seaham	36	45
R2	115 Brandy Hill Drive, Seaham	36	45
R3	13 Mooghin Road, Seaham	36	45
All other noise receiver locations		36	45

Sample Location	Sample Collector	Sample Reference No.	Date	Time	pH (site)	TSS (mg/L)	pH (lab)	Oil/grease (mg/L)	Discharge? Number of days	Comments
Dec-23										
4 (North Sediment Dam 2)	Dam 2 no longer in use/no longer a water catchment									
5 (Polishing Dam 3)	VGT Contractor	11/12/2023			<5	8.1	<5			
6 (North Sediment Dam 1)	VGT Contractor	11/12/2023			<5	8.3	<5			
Nov-23										
4 (North Sediment Dam 2)	Dam 2 no longer in use/no longer a water catchment									
5 (Polishing Dam 3)	VGT Contractor	13/11/2023			<5	8.3	<5			
6 (North Sediment Dam 1)	VGT Contractor	13/11/2023			<5	8.1	<5			
Oct-23										
4 (North Sediment Dam 2)	Dam 2 no longer in use/no longer a water catchment									
5 (Polishing Dam 3)	VGT Contractor	16/10/2023			<5	7.8	<5			
6 (North Sediment Dam 1)	VGT Contractor	16/10/2023			<5	8.3	<5			
Sep-23										
4 (North Sediment Dam 2)	Dam 2 no longer in use/no longer a water catchment									
5 (Polishing Dam 3)	VGT Contractor	18/09/2022			<5	8	<5			
6 (North Sediment Dam 1)	VGT Contractor	18/09/2022			<5	8.3	<5			
Aug-23										
4 (North Sediment Dam 2)	Dam 2 no longer in use/no longer a water catchment									
5 (Polishing Dam 3)	VGT Contractor	21/08/2022			<5	7.8	<5			
6 (North Sediment Dam 1)	VGT Contractor	21/08/2022			<5	8.3	<5			
Jul-23										
4 (North Sediment Dam 2)	Dam 2 no longer in use/no longer a water catchment									
5 (Polishing Dam 3)	VGT Contractor	1/07/2022			<5	7.9	<5			
6 (North Sediment Dam 1)	VGT Contractor	1/07/2022			<5	8.2	<5			
Jun-23										
4 (North Sediment Dam 2)	Dam 2 no longer in use/no longer a water catchment									
5 (Polishing Dam 3)	VGT Contractor	26/06/2022			<5	7.7	<5			
6 (North Sediment Dam 1)	VGT Contractor	26/06/2022			<5	8.1	<5			
May-23										
4 (North Sediment Dam 2)	Dam 2 no longer in use/no longer a water catchment									
5 (Polishing Dam 3)	VGT Contractor	1/05/2022			<5	7.7	<5			
6 (North Sediment Dam 1)	VGT Contractor	1/05/2022			<5	8.3	<5			
Apr-23										
4 (North Sediment Dam 2)	Dam 2 no longer in use/no longer a water catchment									
5 (Polishing Dam 3)	VGT Contractor	6/04/2022			<5	7.6	<5			
6 (North Sediment Dam 1)	VGT Contractor	6/04/2022			<5	8.3	<5			
Mar-23										
4 (North Sediment Dam 2)	Dam 2 no longer in use/no longer a water catchment									
5 (Polishing Dam 3)	VGT Contractor	6/03/2022			<5	7.7	<5			
6 (North Sediment Dam 1)	VGT Contractor	6/03/2022			<5	8.4	<5			
Feb-23										
4 (North Sediment Dam 2)	Dam 2 no longer in use/no longer a water catchment									
5 (Polishing Dam 3)	VGT Contractor	6/02/2022			6	7.5	<5			
6 (North Sediment Dam 1)	VGT Contractor	6/02/2022			<5	8.1	<5			
Jan-23										
4 (North Sediment Dam 2)	Dam 2 no longer in use/no longer a water catchment									
5 (Polishing Dam 3)	VGT Contractor	9/01/2023			<5	7.8	<5			
6 (North Sediment Dam 1)	VGT Contractor	9/01/2023			<5	8.3	<5			
Dec-22										

4 (North Sediment Dam 2)	Dam 2 no longer in use/no longer a water catchment									
5 (Polishing Dam 3)	VGT Contractor	12/12/2022			<5	7.9	<5			
6 (North Sediment Dam 1)	VGT Contractor	12/12/2022			<5	8.3	<5			
Nov-22										
4 (North Sediment Dam 2)	Dam 2 no longer in use/no longer a water catchment									
5 (Polishing Dam 3)	VGT Contractor	14/11/2022			<5	8	<5			
6 (North Sediment Dam 1)	VGT Contractor	14/11/2022			<5	8.1	<5			
Oct-22										
4 (North Sediment Dam 2)	Dam 2 no longer in use/no longer a water catchment									
5 (Polishing Dam 3)	VGT Contractor	17/10/2022			<5	8.3	<5			
6 (North Sediment Dam 1)	VGT Contractor	17/10/2022			<5	8.4	9			
Sep-22										
4 (North Sediment Dam 2)	No Discharge - North Sediment Dam 2 no longer in use/no longer a water catchment									
5 (Polishing Dam 3)	VGT Contractor	19/09/2022			<5	8	<5			
6 (North Sediment Dam 1)	VGT Contractor	19/09/2022			<5	8.5	<5			
Aug-22										
4 (North Sediment Dam 2)	No Discharge - North Sediment Dam 2 no longer in use/no longer a water catchment									
5 (Polishing Dam 3)	VGT Contractor	22/08/2022			<5	7.9	<5			
6 (North Sediment Dam 1)	VGT Contractor	22/08/2022			<5	8.3	<5			
Jul-22										
4 (North Sediment Dam 2)	No Discharge - North Sediment Dam 2 no longer in use/no longer a water catchment									
5 (Polishing Dam 3)	VGT Contractor	25/07/2022			10	7.6	<5			
6 (North Sediment Dam 1)	VGT Contractor	25/07/2022			<5	8.2	<5			
Jun-22										
4 (North Sediment Dam 2)	No Discharge - North Sediment Dam 2 no longer in use/no longer a water catchment									
5 (Polishing Dam 3)	VGT Contractor	27/06/2022			<5	7.8	<5			
6 (North Sediment Dam 1)	VGT Contractor	27/06/2022			<5	8.2	<5			
May-22										
4 (North Sediment Dam 2)	No Discharge - North Sediment Dam 2 no longer in use/no longer a water catchment									
5 (Polishing Dam 3)	VGT Contractor	30/05/2022			6	7.6	<5			
6 (North Sediment Dam 1)	VGT Contractor	30/05/2022			<5	8.1	<5			
May-22										
4 (North Sediment Dam 2)	No Discharge - North Sediment Dam 2 no longer in use/no longer a water catchment									
5 (Polishing Dam 3)	VGT Contractor	2/05/2022			<5	7.7	<5			
6 (North Sediment Dam 1)	VGT Contractor	2/05/2022			<5	8.1	<5			
Apr-22										
4 (North Sediment Dam 2)	No Discharge - North Sediment Dam 2 no longer in use/no longer a water catchment									
5 (Polishing Dam 3)	VGT Contractor	4/04/2022			13	7.6	<5			
6 (North Sediment Dam 1)	VGT Contractor	4/04/2022			<5	8.2	<5			
Mar-22										
4 (North Sediment Dam 2)	No Discharge - North Sediment Dam 2 no longer in use/no longer a water catchment									
5 (Polishing Dam 3)	VGT Contractor	7/03/2022			24	7.8	<5			
6 (North Sediment Dam 1)	VGT Contractor	7/03/2022			<5	8.4	<5			
Feb-22										
4 (North Sediment Dam 2)	No Discharge - North Sediment Dam 2 no longer in use/no longer a water catchment									
5 (Polishing Dam 3)	VGT Contractor	7/02/2022			<5	7.6	<5			
6 (North Sediment Dam 1)	VGT Contractor	7/02/2022			<5	8.4	<5			
Jan-22										
4 (North Sediment Dam 2)	No Discharge - North Sediment Dam 2 no longer in use/no longer a water catchment									
5 (Polishing Dam 3)	VGT Contractor		10/01/2022			<5	8.1	<5		
6 (North Sediment Dam 1)	VGT Contractor		10/01/2022			<5	8.4	<5		
Dec-21										
4 (North Sediment Dam 2)	No Discharge - North Sediment Dam 2 no longer in use/no longer a water catchment									

5 (Polishing Dam 3)	VGT Contractor		13/12/2021			<5	7.8	<5		
6 (North Sediment Dam 1)	VGT Contractor		13/12/2021			<5	8.4	<5		
Nov-21										
4 (North Sediment Dam 2)	No Discharge - North Sediment Dam 2 no longer in use/no longer a water catchment									
5 (Polishing Dam 3)	VGT Contractor		15/11/2021			10	7.6	<5		
6 (North Sediment Dam 1)	VGT Contractor		15/11/2021			10	8.2	<5		
Oct-21										
4 (North Sediment Dam 2)	No Discharge - North Sediment Dam 2 no longer in use/no longer a water catchment									
5 (Polishing Dam 3)	VGT Contractor		18/10/2021			<5	7.9	<5		
6 (North Sediment Dam 1)	VGT Contractor		18/10/2021			<5	8.3	<5		
Sep-21										
4 (North Sediment Dam 2)	No Discharge - North Sediment Dam 2 no longer in use/no longer a water catchment									
5 (Polishing Dam 3)	VGT Contractor		20/09/2021			<5	8	<5		
6 (North Sediment Dam 1)	VGT Contractor		20/09/2021			<5	8.2	<5		
Aug-21										
4 (North Sediment Dam 2)	No Discharge - North Sediment Dam 2 no longer in use/no longer a water catchment									
5 (Polishing Dam 3)	VGT Contractor		23/08/2021			<5	8	<5		
6 (North Sediment Dam 1)	VGT Contractor		23/08/2021			<5	8.3	<5		
Jul-21										
4 (North Sediment Dam 2)	No Discharge - North Sediment Dam 2 no longer in use/no longer a water catchment									
5 (Polishing Dam 3)	VGT Contractor		26/07/2021			<5	7.8	<5		
6 (North Sediment Dam 1)	VGT Contractor		26/07/2021			<5	8.1	<5		
Jun-21										
4 (North Sediment Dam 2)	No Discharge - North Sediment Dam 2 no longer in use/no longer a water catchment									
5 (Polishing Dam 3)	VGT Contractor		28/06/2021			<5	8	<5		
6 (North Sediment Dam 1)	VGT Contractor		28/06/2021			<5	8.1	<5		
May-21										
4 (North Sediment Dam 2)	No Discharge - North Sediment Dam 2 no longer in use/no longer a water catchment									
5 (Polishing Dam 3)	VGT Contractor		31/05/2021			<5	7.9	<5		
6 (North Sediment Dam 1)	VGT Contractor		31/05/2021			<5	8.1	<5		
May-21										
4 (North Sediment Dam 2)	No Discharge - North Sediment Dam 2 no longer in use/no longer a water catchment									
5 (Polishing Dam 3)	VGT Contractor		3/05/2021			6	8.1	<5		
6 (North Sediment Dam 1)	VGT Contractor		3/05/2021			6	8.1	<5		
Apr-21										
4 (North Sediment Dam 2)	No Discharge - North Sediment Dam 2 no longer in use/no longer a water catchment									
5 (Polishing Dam 3)	VGT Contractor		19/04/2021			6	8	<5		
6 (North Sediment Dam 1)	VGT Contractor		19/04/2021			3	8.1	<5		
Mar-21										
4 (North Sediment Dam 2)	No Discharge - North Sediment Dam 2 no longer in use/no longer a water catchment									
5 (Polishing Dam 3)	VGT Contractor		8/03/2021			2	7.76	<5		
6 (North Sediment Dam 1)	VGT Contractor		8/03/2021			2	8.03	<5		
Feb-21										
4 (North Sediment Dam 2)	No Discharge - North Sediment Dam 2 no longer in use/no longer a water catchment									
5 (Polishing Dam 3)	VGT Contractor		8/02/2021			3	8.28	<5		
6 (North Sediment Dam 1)	VGT Contractor		8/02/2021			9	8.3	<5		
Jan-21										
4 (North Sediment Dam 2)	No Discharge - North Sediment Dam 2 no longer in use/no longer a water catchment									
5 (Polishing Dam 3)	VGT Contractor		11/01/2021			3	8	<5		
6 (North Sediment Dam 1)	VGT Contractor		11/01/2021			<2	8.4	<5		
Dec-20										
4 (North Sediment Dam 2)	No Discharge - North Sediment Dam 2 no longer in use/no longer a water catchment									
5 (Polishing Dam 3)	Shaun Boland		14/12/2020			4	8.5	<5		

6 (North Sediment Dam 1)	Shaun Boland		14/12/2020			2	8.2	<5	
Nov-20									
4 (North Sediment Dam 2)	No Discharge - North Sediment Dam 2 no longer in use/no longer a water catchment								
5 (Polishing Dam 3)	Shaun Boland		16/11/2020			6	8.7	<5	
6 (North Sediment Dam 1)	Shaun Boland		16/11/2020			6	8.1	<5	
Oct-20									
4 (North Sediment Dam 2)	No Discharge - North Sediment Dam 2 no longer in use/no longer a water catchment								
5 (Polishing Dam 3)	Shaun Boland		19/10/2020			21	7.9	<5	
6 (North Sediment Dam 1)	Shaun Boland		19/10/2020			<2	8.2	<5	
Sep-20									
4 (North Sediment Dam 2)	No Discharge - North Sediment Dam 2 no longer in use/no longer a water catchment								
5 (Polishing Dam 3)	Shaun Boland		21/09/2020			6	8.2	<5	
6 (North Sediment Dam 1)	Shaun Boland		21/09/2020			3	8.5	<5	
Aug-20									
4 (North Sediment Dam 2)	No Discharge - North Sediment Dam 2 no longer in use/no longer a water catchment								
5 (Polishing Dam 3)	Shaun Boland		24/08/2020			4	7.9	<5	
6 (North Sediment Dam 1)	Shaun Boland		24/08/2020			3	8.2	<5	
Jul-20									
4 (North Sediment Dam 2)	No Discharge - North Sediment Dam 2 no longer in use/no longer a water catchment								
5 (Polishing Dam 3)	Shaun Boland		27/07/2020			2	8	<5	
6 (North Sediment Dam 1)	Shaun Boland		27/07/2020			2	7.7	<5	
Jun-20									
4 (North Sediment Dam 2)	No Discharge - North Sediment Dam 2 no longer in use/no longer a water catchment								
5 (Polishing Dam 3)	Shaun Boland		29/06/2020			2	8	<5	
6 (North Sediment Dam 1)	Shaun Boland		29/06/2020			2	7.7	<5	
Jun-20									
4 (North Sediment Dam 2)	No Discharge - North Sediment Dam 2 no longer in use/no longer a water catchment								
5 (Polishing Dam 3)	Shaun Boland		1/06/2020			6	8	<5	
6 (North Sediment Dam 1)	Shaun Boland		1/06/2020			<2	7.8	<5	
May-20									
4 (North Sediment Dam 2)	No Discharge - North Sediment Dam 2 no longer in use/no longer a water catchment								
5 (Polishing Dam 3)	Shaun Boland		4/05/2020			3	7.6	<5	
6 (North Sediment Dam 1)	Shaun Boland		4/05/2020			<2	7.9	<5	
Apr-20									
4 (North Sediment Dam 2)	No Discharge - North Sediment Dam 2 no longer in use/no longer a water catchment								
5 (Polishing Dam 3)	Shaun Boland		6/04/2020			12	7.6	<5	
6 (North Sediment Dam 1)	Shaun Boland		6/04/2020			18	7.6	<5	
Mar-20									
4 (North Sediment Dam 2)	No Discharge - North Sediment Dam 2 no longer in use/no longer a water catchment								
5 (Polishing Dam 3)	Shaun Boland		9/03/2020			15	7.6	<5	
6 (North Sediment Dam 1)	Shaun Boland		9/03/2020			6	8.1	<5	
Feb-20									
4 (North Sediment Dam 2)	No Discharge - North Sediment Dam 2 no longer in use/no longer a water catchment								
5 (Polishing Dam 3)	Shaun Boland		10/02/2020			134	7.8	<5	
6 (North Sediment Dam 1)	Shaun Boland		10/02/2020			3	8.2	<5	
Jan-20									
4 (North Sediment Dam 2)	No Discharge - North Sediment Dam 2 no longer in use/no longer a water catchment								
5 (Polishing Dam 3)	Shaun Boland		13/01/2020			11	7.8	<5	
6 (North Sediment Dam 1)	Shaun Boland		13/01/2020			<2	8.2	<5	
Dec-19									
4 (North Sediment Dam 2)	No Discharge - North Sediment Dam 2 no longer in use/no longer a water catchment								
5 (Polishing Dam 3)	Shaun Boland		16/12/2019			9	8.2	<5	
6 (North Sediment Dam 1)	Shaun Boland		16/12/2019			<2	8.5	<5	

Nov-19									
4 (North Sediment Dam 2)	No Discharge - North Sediment Dam 2 no longer in use/no longer a water catchment								
5 (Polishing Dam 3)	Shaun Boland		18/11/2019			5	8.8	<5	
6 (North Sediment Dam 1)	Shaun Boland		18/11/2019			<2	8.5	<5	
Oct-19									
4 (North Sediment Dam 2)	No Discharge - North Sediment Dam 2 no longer in use/no longer a water catchment								
5 (Polishing Dam 3)	Shaun Boland		21/10/2019			3	8.7	<5	
6 (North Sediment Dam 1)	Shaun Boland		21/10/2019			<2	8.4	<5	
Sep-19									
4 (North Sediment Dam 2)	No Discharge - North Sediment Dam 2 no longer in use/no longer a water catchment								
5 (Polishing Dam 3)	Shaun Boland		23/09/2019			22	8	<5	
6 (North Sediment Dam 1)	Shaun Boland		23/09/2019			<2	8.5	<5	
Aug-19									
4 (North Sediment Dam 2)	No Discharge - North Sediment Dam 2 no longer in use/no longer a water catchment								
5 (Polishing Dam 3)	Shaun Boland		26/08/2019			3	8.2	<5	
6 (North Sediment Dam 1)	Shaun Boland		26/08/2019			<2	8.3	<5	
Jul-19									
4 (North Sediment Dam 2)	No Discharge - North Sediment Dam 2 no longer in use/no longer a water catchment								
5 (Polishing Dam 3)	Shaun Boland		29/07/2019			<2	8.1	<5	
6 (North Sediment Dam 1)	Shaun Boland		29/07/2019			<2	8.2	<5	
Jun-19									
4 (North Sediment Dam 2)	No Discharge - North Sediment Dam 2 no longer in use/no longer a water catchment								
5 (Polishing Dam 3)	Shaun Boland		28/06/2019			10	8.1	<5	
6 (North Sediment Dam 1)	Shaun Boland		28/06/2019			5	8.1	<5	
May-19									
4 (North Sediment Dam 2)	No Discharge - North Sediment Dam 2 no longer in use/no longer a water catchment								
5 (Polishing Dam 3)	Shaun Boland		5/05/2019			7	8.2	<5	
5 (Polishing Dam 3)	Shaun Boland		31/05/2019			<2	8.1	<5	
6 (North Sediment Dam 1)	Shaun Boland		5/05/2019			<2	8.3	<5	
6 (North Sediment Dam 1)	Shaun Boland		31/05/2019			<2	7.8	<5	
Apr-19									
4 (North Sediment Dam 2)	No Discharge - North Sediment Dam 2 no longer in use/no longer a water catchment								
5 (Polishing Dam 3)	Shaun Boland		5/04/2019			12	7.8	<5	
6 (North Sediment Dam 1)	Shaun Boland		5/04/2019			5	8.1	<5	
Mar-19									
4 (North Sediment Dam 2)	No Discharge - North Sediment Dam 2 no longer in use/no longer a water catchment								
5 (Polishing Dam 3)	Shaun Boland		6/03/2019			5	7.8	<5	
6 (North Sediment Dam 1)	Shaun Boland		6/03/2019			<2	8.5	<5	
Feb-19									
4 (North Sediment Dam 2)	No Discharge - North Sediment Dam 2 no longer in use/no longer a water catchment								
5 (Polishing Dam 3)	Shaun Boland		6/02/2019			4	7.8	<5	
6 (North Sediment Dam 1)	Shaun Boland		6/02/2019			<2	8.5	<5	
Jan-19									
4 (North Sediment Dam 2)	No Discharge - North Sediment Dam 2 no longer in use/no longer a water catchment								
5 (Polishing Dam 3)	Shaun Boland		9/01/2019			<2	8	<5	
6 (North Sediment Dam 1)	Shaun Boland		9/01/2019			<2	8.4	<5	
Dec-18									
4 (North Sediment Dam 2)	No Discharge - North Sediment Dam 2 no longer in use/no longer a water catchment								
5 (Polishing Dam 3)	Shaun Boland		12/12/2018			9	7.7	<5	
6 (North Sediment Dam 1)	Shaun Boland		12/12/2018			2	8.5	<5	
Nov-18									
4 (North Sediment Dam 2)	No Discharge - North Sediment Dam 2 no longer in use/no longer a water catchment								
5 (Polishing Dam 3)	Shaun Boland		14/11/2018			2	8.5	<5	

6 (North Sediment Dam 1)	Shaun Boland		14/11/2018			2	8.3	<5		
Oct-18										
4 (North Sediment Dam 2)	No Discharge - North Sediment Dam 2 no longer in use/no longer a water catchment									
5 (Polishing Dam 3)	Shaun Boland		17/10/2018			10	8.1	<5		
6 (North Sediment Dam 1)	Shaun Boland		17/10/2018			10	8.5	<5		
Sep-18										
4 (North Sediment Dam 2)	No Discharge - North Sediment Dam 2 no longer in use/no longer a water catchment									
5 (Polishing Dam 3)	Shaun Boland		19/09/2018			4	7.9	<5		
6 (North Sediment Dam 1)	Shaun Boland		19/09/2018			2	8.3	<5		
Aug-18										
4 (North Sediment Dam 2)	No Discharge - North Sediment Dam 2 no longer in use/no longer a water catchment									
5 (Polishing Dam 3)	Shaun Boland		22/08/2018			6	8.2	<5		
6 (North Sediment Dam 1)	Shaun Boland		22/08/2018			<2	8.3	<5		
Jul-18										
4 (North Sediment Dam 2)	No Discharge - North Sediment Dam 2 no longer in use/no longer a water catchment									
5 (Polishing Dam 3)	Shaun Boland		25/07/2018			3	8.2	<5		
6 (North Sediment Dam 1)	Shaun Boland		25/07/2018			<2	8.2	<5		
Jun-18										
4 (North Sediment Dam 2)	No Discharge - North Sediment Dam 2 no longer in use/no longer a water catchment									
5 (Polishing Dam 3)	Shaun Boland		27/06/2018			3	7.9	<5		
6 (North Sediment Dam 1)	Shaun Boland		27/06/2018			<2	8.1	<5		
May-18										
4 (North Sediment Dam 2)	No Discharge - North Sediment Dam 2 no longer in use/no longer a water catchment									
5 (Polishing Dam 3)	Shaun Boland		2/05/2018			11	7.7	<5		
5 (Polishing Dam 3)	Shaun Boland		30/05/2018			3	7.9	<5		
6 (North Sediment Dam 1)	Shaun Boland		2/05/2018			<2	8	<5		
6 (North Sediment Dam 1)	Shaun Boland		30/05/2018			<2	8.1	<5		
Apr-18										
4 (North Sediment Dam 2)	No Discharge - North Sediment Dam 2 no longer in use/no longer a water catchment									
5 (Polishing Dam 3)	Shaun Boland		4/04/2018			25	7.8	<5		
6 (North Sediment Dam 1)	Shaun Boland		4/04/2018			<2	8.3	<5		
Mar-18										
4 (North Sediment Dam 2)	No Discharge - North Sediment Dam 2 no longer in use/no longer a water catchment									
5 (Polishing Dam 3)	Shaun Boland		7/03/2018			30	7.7	<5		
6 (North Sediment Dam 1)	Shaun Boland		7/03/2018			1	8.1	<5		
Feb-18										
4 (North Sediment Dam 2)	No Discharge - North Sediment Dam 2 no longer in use/no longer a water catchment									
5 (Polishing Dam 3)	Shaun Boland		7/02/2018			10	9.5	<5		
6 (North Sediment Dam 1)	Shaun Boland		7/02/2018			1	8.3	<5		
Jan-18										
4 (North Sediment Dam 2)	No Discharge - North Sediment Dam 2 no longer in use/no longer a water catchment									
5 (Polishing Dam 3)	Shaun Boland		10/01/2018			26	9.3	<5		
6 (North Sediment Dam 1)	Shaun Boland		10/01/2018			1	8.2	<5		
Dec-17										
4 (North Sediment Dam 2)	No Discharge - North Sediment Dam 2 no longer in use/no longer a water catchment									
5 (Polishing Dam 3)	Shaun Boland									
6 (North Sediment Dam 1)	Shaun Boland									
Nov-17										
4 (North Sediment Dam 2)	No Discharge - North Sediment Dam 2 no longer in use/no longer a water catchment									
5 (Polishing Dam 3)	Shaun Boland									
6 (North Sediment Dam 1)	Shaun Boland									
Oct-17										
4 (North Sediment Dam 2)	No Discharge - North Sediment Dam 2 no longer in use/no longer a water catchment									

5 (Polishing Dam 3)	Shaun Boland		18/10/2017			43	8.3	<5		
6 (North Sediment Dam 1)	Shaun Boland		18/10/2017			2	8.6	<5		
Sep-17										
4 (North Sediment Dam 2)	No Discharge - North Sediment Dam 2 no longer in use/no longer a water catchment									
5 (Polishing Dam 3)	Shaun Boland		20/09/2017			14	9	<5		
6 (North Sediment Dam 1)	Shaun Boland		20/09/2017			3	8.6	<5		
Aug-17										
4 (North Sediment Dam 2)	No Discharge - North Sediment Dam 2 no longer in use/no longer a water catchment									
5 (Polishing Dam 3)	Shaun Boland		23/08/2017			24	8.9	<5		
6 (North Sediment Dam 1)	Shaun Boland		23/08/2017			<2	8.5	<5		
Jul-17										
4 (North Sediment Dam 2)	No Discharge - North Sediment Dam 2 no longer in use/no longer a water catchment									
5 (Polishing Dam 3)	Shaun Boland		26/07/2017			19	8.6	<5		
6 (North Sediment Dam 1)	Shaun Boland		26/07/2017			<1	8.4	<5		
Jun-17										
4 (North Sediment Dam 2)	No Discharge - North Sediment Dam 2 no longer in use/no longer a water catchment									
5 (Polishing Dam 3)	Shaun Boland		28/06/2017			19	8.1	<5		
6 (North Sediment Dam 1)	Shaun Boland		28/06/2017			1	67	<5		
May-17										
4 (North Sediment Dam 2)	Shaun Boland		31/05/2017			112	7.8	<5		
5 (Polishing Dam 3)	Shaun Boland		31/05/2017			19	8.1	<5		
6 (North Sediment Dam 1)	Shaun Boland		31/05/2017			1	67	<5		
May-17										
4 (North Sediment Dam 2)	Shaun Boland		12/05/2017			5	9.5	<5		
5 (Polishing Dam 3)	Shaun Boland		12/05/2017			31	8	<5		
6 (North Sediment Dam 1)	Shaun Boland		12/05/2017			<1	8.4	<5		
Apr-17										
4 (North Sediment Dam 2)	Shaun Boland		5/04/2017			11	8.2	<5		
5 (Polishing Dam 3)	Shaun Boland		5/04/2017			25	7.6	<5		
6 (North Sediment Dam 1)	Shaun Boland		5/04/2017			3	8.5	<5		
Mar-17										
4 (North Sediment Dam 2)	Shaun Boland		7/03/2017			40	7.9	<5		
5 (Polishing Dam 3)	Shaun Boland		7/03/2017			143	8	<5		
6 (North Sediment Dam 1)	Shaun Boland		7/03/2017			6	8.3	<5		
Feb-17										
4 (North Sediment Dam 2)	Shaun Boland		3/02/2017			60	9	<5		
5 (Polishing Dam 3)	Shaun Boland		3/02/2017			<2	7.6	<5		
6 (North Sediment Dam 1)	Shaun Boland		3/02/2017			2	8.5	<5		
Jan-17										
4 (North Sediment Dam 2)	Shaun Boland		5/01/2017			46	8.6	<5		
5 (Polishing Dam 3)	Shaun Boland		5/01/2017			N/A	N/A	N/A		
6 (North Sediment Dam 1)	Shaun Boland		5/01/2017			N/A	N/A	N/A		

Dust Deposition Gauge Monthly Monitoring																	
DDG 1 (Giles Road)						DDG 2 (Front gate quarry)						DDG 3 (Cattle yard)					
Month and Year	Date data obtained	Total Insoluble Matter g/m2/month	Rolling Annual Average	M2 Air - Ash (gms/sqm/ mth)	M2 Air - Combustabl e Material	Month and Year	Date data obtained	Total Insoluble Matter g/m2/month	Rolling Annual Average	M2 Air - Ash (gms/sqm/ mth)	M2 Air - Combustabl e Material	Month and Year	Date data obtained	Total Insoluble Matter g/m2/month	Rolling Annual Average	M2 Air - Ash (gms/sqm/ mth)	M2 Air - Combustabl e Material
2023																	
December 2023						December 2023						December 2023					
November 2023	13/11/2023	2.3		0.7	1.6	November 2023	13/11/2013	2.2		1	1.2	November 2023	13/11/2023	1		0.4	0.6
October 2023	16/10/2023	1.2		0.4	0.8	October 2023	16/10/2023	1.2		0.6	0.6	October 2023	16/10/2023	0.7		0.3	0.4
September 2023	18/09/2023	0.6		0.4	0.2	September 2023	18/09/2023	1.2		0.6	0.6	September 2023	18/09/2023	0.5		0.4	<0.1
August 2023	21/08/2023	0.4		0.2	0.2	August 2023	21/08/2023	0.9		0.5	0.4	August 2023	21/08/2023	2.4		1.2	1.2
July 2023	24/07/2023	0.3		0.2	<0.1	July 2023	24/07/2023	0.5		0.4	0.1	July 2023	24/07/2023	0.2		0.2	<0.1
June 2023	26/06/2023	0.4		0.2	0.2	June 2023	26/06/2023	1.6		0.2	0.2	June 2023	26/06/2023	3.6		1.4	2.2
May 2023	1/05/2023	0.4		0.2	0.2	May 2023	1/05/2023	0.9		0.5	0.4	May 2023	1/05/2023	2.6		1.4	1.2
April 2023	3/04/2023	0.5		0.5	<0.1	April 2023	3/04/2023	0.9		0.6	0.3	April 2023	3/04/2023	0.4		0.4	<0.1
March 2023	6/03/2023	0.8		0.8	0.4	March 2023	6/03/2023	0.6		0.3	0.3	March 2023	6/03/2023	1.2		0.6	0.6
February 2023	6/02/2023	0.5		0.2	0.3	February 2023	6/02/2023	4		1.5	2.5	February 2023	6/02/2023	2.5		1.1	1.4
January 2023	9/01/2023	0.5		0.2	0.3	January 2023	9/01/2023	0.8		0.4	0.4	January 2023	9/01/2023	1		0.4	0.6
2022																	
December 2022	12/12/2022	2.2		0.7	1.5	December 2022	12/12/2022	0.7		0.5	0.2	December 2022	12/12/2022	5.5		2.6	2.9
November 2022	14/11/2022	0.8		0.5	0.3	December 2022	14/11/2022	3.5		1.6	1.9	December 2022	14/11/2022	5		1.3	3.7
October 2022	21/10/2022	1.2		0.4	0.8	November 2022	21/10/2022	0.4		0.3	0.1	November 2022	21/10/2022	1		0.5	0.5
September 2022	27/09/2022	1.7		0.2	1.5	October 2022	27/09/2022	1.4		0.3	1.1	October 2022	27/09/2022	3.5		0.9	2.6
August 2022	30/08/2022	0.7		0.2	0.5	September 2022	30/08/2022	1		0.5	0.5	September 2022	30/08/2022	1.6		1.2	0.4
August 2022	1/08/2022	0.4		<0.1	0.4	August 2022	1/08/2022	0.7		0.3	0.4	August 2022	1/08/2022	0.8		0.3	0.5
July 2022	4/07/2022	0.5		0.2	0.3	July 2022	4/07/2022	1.1		0.5	0.6	July 2022	4/07/2022	1.6		0.5	1.1
June 2022	8/06/2022	0.6		0.2	0.4	June 2022	8/06/20200	3.9		2.0	1.9	June 2022	8/06/2022	5		3.9	1.1
May 2022	11/05/2022	0.4		0.2	0.2	May 2022	11/05/2022	2.5		1.1	1.4	May 2022	11/05/2022	3.3		1.8	1.5
April 2022	8/04/2022	0.8		0.1	0.7	April 2022	8/04/2022	1.4		0.5	0.9	April 2022	8/04/2022	2.8		0.7	2.1
March 2022	9/03/2022	0.7		0.3	0.4	March 2022	9/03/2022	2.4		0.6	1.8	March 2022	9/03/2022	1		0.4	0.6
February 2022	7/01/2022	0.7		0.4	0.3	February 2022	7/02/2022	1.2		0.5	0.7	February 2022	7/02/2022	2.8		1.3	1.5
January 2022	10/01/2022	0.9		0.3	0.6	January 2022	10/01/2022	1.5		0.7	0.8	January 2022	10/01/2022	3.2		1.9	1.3
2021																	
December 2021	16/12/2021	0.4	0.6	0.2	0.2	December 2021	16/12/2021	0.5	3.8846154	0.2	0.3	December 2021	16/12/2021	5.3	2.3230769	2.3	3
November 2021	15/11/2021	1.3	0.6	0.6	0.7	November 2021	15/11/2021	0.7	4.1666667	0.4	0.3	November 2021	15/11/2021	1.3	2.075	0.6	0.7
October 2021	18/10/2021	0.6	0.6	0.4	0.2	October 2021	18/10/2021	0.8	4.2416667	0.5	0.3	October 2021	18/10/2021	1	2.1454545	0.4	0.6
September 2021	20/09/2021	0.4	0.7	0.2	0.2	September 2021	20/09/2021	0.9	4.4727273	0.5	0.4	September 2021	20/09/2021	4.1	2.1	1.9	2.2
August 2021	23/08/2021	0.5	0.8	0.3	0.2	August 2021	23/08/2021	0.4	5.1	0.4	<0.1	August 2021	23/08/2021	0.5	2.0	0.4	0.1
July 2021	26/07/2021	0.1	0.9	0.1	<0.1	July 2021	26/07/2021	19.2	5.2	15.2		July 2021	26/072021	0.4	2.2	0.3	0.1
June 2021	28/06/2021	0.2	0.9	0.2	0.1	June 2021	28/06/2021	5.2	4.0	3.5	1.7	June 2021	28/06/2021	1.8	2.2	0.8	1.0
May 2021	31/05/2021	0.5	1.0	0.4	0.1	May 2021	31/05/2021	1.4	3.4	0.9	0.5	May 2021	31/05/2021	4.7	2.0	0.9	3.8
May 2021	3/05/2021	0.6	1.0	0.2	0.4	May 2021	3/05/2021	4.5	3.5	1.4	3.1	May 2021	3/05/2021	3.6	1.7	1.5	2.1
April 2021	5/04/2021	0.6	1.0	0.4	0.2	April 2021	5/04/2021	0.4	3.2	0.2	0.2	April 2021	5/04/2021	0.8	1.4	0.4	0.4
March 2021	8/03/2021	0.7	1.0	0.3	0.4	March 2021	8/03/2021	1.3	5.4	1.0	0.3	March 2021	8/03/2021	2.1	1.8	1.4	0.7
February 2021	8/02/2021	1.2	1.1	0.4	0.8	February 2021	8/02/2021	1.6	5.5	0.7	0.9	February 2021	8/02/2021	3	1.8	1.9	1.1
January 2021	11/01/2021	0.8	1.18	0.3	0.5	January 2021	11/01/2021	13.6	5.7	9.0	4.6	January 2021	11/01/2021	1.6	1.7	0.7	0.9
2020																	
December 2020	14/12/2020	1.8	1.3	1.2	0.6	December 2020	14/12/2020	1.6	5.0	1.3	0.3	December 2020	14/12/2020	1.4	1.9	1	0.4
November 2020	16/11/2020	2.2	1.2	0.50	1.70	November 2020	16/11/2020	0.7	5.2	0.4	0.3	November 2020	16/11/2020	0.5	1.9	0.4	0.1
October 2020	19/10/2020	1.5	1.2	0.8	0.70	October 2020	19/10/2020	7.8	5.5	2.3	5.5	October 2020	19/10/2020	2.9	2.1	1.2	1.7
September 2020	21/09/2020	1	1.3	0.3	0.7	September 2020	21/09/2020	1.6	5.0	1.2	0.4	September 2020	21/09/2020	2.7	2.0	1.6	1.1
August 2020	24/08/2020	0.5	1.3	0.4	0.1	August 2020	24/08/2020	5.4	4.9	3.8	1.6	August 2020	24/08/2020	0.4	1.9	0.2	0.2
July 2020	27/07/2020	0.4	1.4	0.1	0.3	July 2020	27/07/2020	0.7	4.8	0.5	0.2	July 2020	27/07/2020	0.7	2.0	0.4	0.3
June 2020	29/06/2020	0.5	1.4	0.2	0.3	June 2020	29/06/2020	2.4	8.7	2.0	0.4	June 2020	29/06/2020	0.4	2.2	0.1	0.3
June 2020	1/06/2020	0.3	1.4	0.1	0.2	June 2020	1/06/2020	1.1	9.6	0.5	0.6	June 2020	1/06/2020	0.2	2.2	0.1	0.1
May 2020	4/05/2020	1.6	1.4	0.7	0.9	May 2020	4/05/2020	27.1	10.9	21.2	5.9	May 2020	4/05/2020	0.8	2.2	0.3	0.5
April 2020	6/04/2020	1	1.3	0.5	0.5	April 2020	6/04/2020	4.7	9.2	1.2	3.5	April 2020	6/04/2020	6.1	2.2	2.7	3.4
March 2020	9/03/2020	1.3	1.3	0.7	0.6	March 2020	9/03/2020	2.9	8.6	2.1	0.8	March 2020	9/03/2020	2.7	1.8	1.3	1.4
February 2020	10/02/2020	2.5	1.3	1.8	0.7	February 2020	10/02/2020	5	8.7	2.1	2.9	February 2020	10/02/2020	2	1.7	1.5	0.5
January 2020	13/01/2020	2.1	1.2	1.3	0.8	January 2020	13/01/2020	3.5	9.1	2.4	1.1	January 2020	13/01/2020	3.6	1.7	1.9	1.7

2019															
December 2019	16/12/2019	1.9	1.1			December 2019	16/12/2019	4.2	9.6			December 2019	16/12/2019	2.8	1.6
November 2019	18/11/2019	2	1.0			November 2019	18/11/2019	1.2	10.1			November 2019	18/11/2019	1.2	1.4
October 2019	21/10/2019	1.4	1.1			October 2019	21/10/2019	0.7	10.0			October 2019	21/10/2019	2.2	1.4
September 2019	23/09/2019	1.5	1.1			September 2019	23/09/2019	3.5	10.0			September 2019	23/09/2019	1.7	1.4
August 2019	26/08/2019	1.1	1.0			August 2019	26/08/2019	47.5	9.8			August 2019	26/08/2019	2.2	1.3
July 2019	29/07/2019	0.2	0.9			July 2019	29/07/2019	14.1	5.6			July 2019	29/07/2019	0.3	1.2
June 2019	28/06/2019	0.5	0.9			June 2019	28/06/2019	16.8	4.6			June 2019	28/06/2019	0.8	1.5
May 2019	31/05/2019	0.6	0.9			May 2019	31/05/2019	5.8	3.1			May 2019	31/05/2019	0.8	1.6
April 2019	5/05/2019	0.5	0.9			April 2019	5/05/2019	2.7	2.9			April 2019	5/05/2019	1.5	1.8
March 2019	5/04/2019	1.2	0.9			March 2019	5/04/2019	4.2	2.8			March 2019	5/04/2019	2.1	1.8
February 2019	6/03/2019	1.6	0.9			February 2019	6/03/2019	4.4	2.5			February 2019	6/03/2019	0.9	1.6
January 2019	6/02/2019	0.7	0.8			January 2019	6/02/2019	10.1	2.1			January 2019	6/02/2019	2.2	1.6
2018															
December 2018	12/12/2018 & 9/01/2019	1.3, 2.4	0.8			December 2018	12/12/2018 & 9/01/2019	0.8, 2.3	1.4			December 2018	12/12/2018 & 9/01/2019	2.8, 2.7	1.5
November 2018	14/11/2018	3	0.9			November 2018	14/11/2018	0.6	1.4			November 2018	14/11/2018	0.2	1.6
October 2018	17/10/2018	0.8	0.7			October 2018	17/10/2018	0.7	5.5			October 2018	17/10/2018	2.5	1.7
September 2018	19/09/2018	0.8	0.7			September 2018	19/09/2018	0.7	1.6			September 2018	19/09/2018	0.8	1.5
August 2018	22/08/2018	0.5	0.7			August 2018	22/08/2018	1	1.7			August 2018	22/08/2018	1.6	1.6
July 2018	25/07/2018	0.2	0.7			July 2018	25/07/2018	3.8	1.6			July 2018	25/07/2018	2.6	1.6
June 2018	27/06/2018	0.2	0.7			June 2018	27/06/2018	0.4	1.7			June 2018	27/06/2018	2.8	1.5
May 2018	30/05/2018	0.4	0.7			May 2018	30/05/2018	3	1.8			May 2018	30/05/2018	2.7	1.3
April 2018	2/05/2018	0.6	0.8			April 2018	2/05/2018	1.7	1.7			April 2018	2/05/2018	0.9	1.2
March 2018	4/04/2018	0.9	0.8			March 2018	4/04/2018	0.9	1.6			March 2018	4/04/2018	0.8	1.4
February 2018	7/03/2018	0.9	0.8			February 2018	7/03/2018	0.7	1.6			February 2018	7/03/2018	0.8	1.9
January 2018	7/02/2018	0.6	0.8			January 2018	7/02/2018	1.7	1.7			January 2018	7/02/2018	0.3	2.1
2017															
December 2017	10/01/2018	1.7	0.8			December 2017	10/01/2018	2	1.7			December 2017	10/01/2018	2.8	2.3
November 2017			0.7			November 2017			1.6			November 2017			2.3
October 2017	18/10/2017	0.6	0.7			October 2017	18/10/2017	1.5	1.6			October 2017	18/10/2017	0.7	2.3
September 2017	20/09/2017	0.6	0.7			September 2017	20/09/2017	1.7	1.6			September 2017	20/09/2017	1.2	2.5
August 2017	23/08/2017	0.5	0.8			August 2017	23/08/2017	0.7	1.6			August 2017	23/08/2017	1.7	2.6
July 2017	26/07/2017	0.4	0.7			July 2017	26/07/2017	4.5	1.6			July 2017	26/07/2017	1.6	2.7
June 2017	28/06/2017	1	0.7			June 2017	28/06/2017	1.3	1.1			June 2017	28/07/2017	1.2	2.6
May 2017	31/05/2017, 12/06/2017	0.6, 0.7	0.6			May 2017	31/05/2017, 12/06/2017	3.4, 0.9	1.1			May 2017	31/05/2017, 12/06/2017	2.1, 3.9	2.5
April 2017	5/04/2017	0.5	0.6			April 2017	5/04/2017	1	1.0			April 2017	5/04/2017	3.1	2.4
March 2017	7/03/2017	1.5	0.6			March 2017	7/03/2017	1.1	1.0			March 2017	7/03/2017	5.1	2.3
February 2017	3/02/2017	0.9	0.5			February 2017	3/02/2017	1.4	0.9			February 2017	3/02/2017	3.4	1.9
January 2017	5/01/2017	0.5	0.5			January 2017	5/01/2017	1.4	0.8			January 2017	5/01/2017	2.3	1.6
2016															
December 2016			0.4			December 2016			0.7			December 2016			1.6
November 2016			0.4			November 2016			0.7			November 2016			1.6
October 2016			0.4			October 2016			0.7			October 2016			1.6
September 2016			0.4			September 2016			0.7			September 2016			1.6
August 2016	10/08/2016	0.2	0.4			August 2016	10/08/2016	0.4	0.7			August 2016	10/08/2016	2.1	1.6
July 2016	11/07/2016	0.4	0.5			July 2016	11/07/2016	1.3	0.8			July 2016	11/07/2016	1.2	1.6
June 2016	9/06/2016	0.2	0.5			June 2016	9/06/2016	0.9	0.7			June 2016	9/06/2016	0.1	1.6
May 2016	12/05/2016	0.3	0.5			May 2016	12/05/2016	0.8	0.6			May 2016	12/05/2016	2.1	1.9
April 2016	12/04/2016	0.9	0.6			April 2016	12/04/2016	0.6	0.6			April 2016	12/04/2016	2.4	1.9
March 2016	15/03/2016	0.6	0.5			March 2016	15/03/2016	0.7	0.6			March 2016	15/03/2016	1.7	1.7
February 2016	15/02/2016	0.5	0.4			February 2016	15/02/2016	0.6	0.6			February 2016	15/02/2016	0.7	1.8
January 2016	14/01/2016	0.3	0.3			January 2016	14/01/2016	0.5	0.5			January 2016	14/01/2016	2.8	2.8

Blast Monitoring						
Date	Time	Blast Location	Blast #	Monitor Location	Air Blast dB	Ground Vibration (m/s)
2023						
19/12/2023	11.12am	Drop Cut	2324	Brandy Hill Dr- Closest Neighbour (4387) Quarry Driveway (4111)	Nil Trigger 97.8	Nil Trigger 0.57
7/12/2023	10.44am	Drop Cut	2323	Brandy Hill Dr- Closest Neighbour (4387) Quarry Driveway (4111)	Nil Trigger 100.9	Nil Trigger 0.53
30/11/2023	12.26pm	Drop Cut	2322	Brandy Hill Dr- Closest Neighbour (4387) Quarry Driveway (4111)	97.6 108	0.5 0.59
9/11/2023	11.15am	Drop Cut	2321	Brandy Hill Dr- Closest Neighbour (4387) Quarry Driveway (4111)	82.8 108.2	0.32 0.42
22/11/2023	1.25pm	Drop Cut	2320	Brandy Hill Dr- Closest Neighbour (4387) Quarry Driveway (4111)	82.8 103.3	0.37 0.55
30/10/2022	11.00am	Drop Cut	2319	Brandy Hill Dr- Closest Neighbour (4387) Quarry Driveway (4111)	105.7 82.8	0.53 0.38
16/10/2023	10.30am	Drop Cut	2318	Brandy Hill Dr- Closest Neighbour (4387) Quarry Driveway (4111)	82.8 108.5	0.55 0.54
22/09/2023	10.36am	Drop Cut	2317	Brandy Hill Dr- Closest Neighbour (4387) Quarry Driveway (4111)	82.8 97.2	0.40 0.46
31/08/2023	11.05am	Drop Cut	2316	Brandy Hill Dr- Closest Neighbour (4387) Quarry Driveway (4111)	82.2 103.3	0.42 0.45
31/08/2023	11.00am	Drop Cut	2315	Brandy Hill Dr- Closest Neighbour (4387) Quarry Driveway (4111)	82.2 103.3	0.42 0.45
15/08/2023	1.56pm	Drop Cut	2314	Brandy Hill Dr- Closest Neighbour (4387) Quarry Driveway (4111)	82.8 102.3	0.52 0.90
25/07/2023	2.30pm	Drop Cut	2313	Brandy Hill Dr- Closest Neighbour (4387) Quarry Driveway (4111)	82.8 103	0.41 0.55
6/07/2023	11.05am	Drop Cut	2312	Brandy Hill Dr- Closest Neighbour (4387) Quarry Driveway (4111)	82.8 104.8	0.44 0.48
15/06/2023	1.10pm	Drop Cut	2311	Brandy Hill Dr- Closest Neighbour (4387) Quarry Driveway (4111)	Nil Trigger 104.2	Nil Trigger 1.57
6/06/2023	12.45pm	Drop Cut	2310	Brandy Hill Dr- Closest Neighbour (4387) Quarry Driveway (4111)	Nil Trigger 111.8	Nil Trigger 0.94
18/05/2023		Drop Cut	2309	Brandy Hill Dr- Closest Neighbour (4387) Quarry Driveway (4111)	Nil Trigger 104.3	Nil Trigger 0.86
27/04/2023	1.45pm	Drop Cut	2308	Brandy Hill Dr- Closest Neighbour (4387) Quarry Driveway (4111)	Nil Trigger 105	Nil Trigger 1.05
6/04/2023	1.35pm	Drop Cut	2307	Brandy Hill Dr- Closest Neighbour (4387) Quarry Driveway (4111)	Nil Trigger 105.7	Nil Trigger 0.69
23/03/2023	10.33am	Drop Cut	2306	Brandy Hill Dr- Closest Neighbour (4387) Quarry Driveway (4111)	Nil Trigger 115.6	Nil Trigger 0.39
23/03/2023	2.48pm	Drop Cut	2306	Brandy Hill Dr- Closest Neighbour (4387) Quarry Driveway (4111)	Nil Trigger 105.5	Nil Trigger 0.54
15/03/2023	11.03am	Drop Cut	2305	Brandy Hill Dr- Closest Neighbour (4387) Quarry Driveway (4111)	Nil Trigger 99.7	Nil Trigger 0.94
2/03/2023	1.05pm	Drop Cut	2304	Brandy Hill Dr- Closest Neighbour (4387) Quarry Driveway (4111)	Nil Trigger 110.8	Nil Trigger 0.54
23/02/2023	12.45pm	Drop Cut	2303	Brandy Hill Dr- Closest Neighbour (4387) Quarry Driveway (4111)	Nil Trigger 106.7	Nil Trigger 0.52
7/02/2023	12.45pm	Drop Cut	2301	Brandy Hill Dr- Closest Neighbour (4387) Quarry Driveway (4111)	99.2 Nil Trigger	0.58 Nil Trigger
25/01/2023	12.45pm	Drop Cut	2300	Brandy Hill Dr- Closest Neighbour (4387) Quarry Driveway (4111)	Nil Trigger Nil Trigger	Nil Trigger Nil Trigger
2022						
20/12/2022	12.45pm	Drop Cut	2216	Brandy Hill Dr- Closest Neighbour (4387) Quarry Driveway (4111)	Nil Trigger 97.2	Nil Trigger 0.62
12/12/2022	3.13pm	Drop Cut	2216	Brandy Hill Dr- Closest Neighbour (4387) Quarry Driveway (4111)	Nil Trigger 114.6	Nil Trigger 0.80
29/11/2022	12.45pm	Drop Cut	2216	Brandy Hill Dr- Closest Neighbour (4387) Quarry Driveway (4111)	Nil Trigger 102.6	Nil Trigger 0.75
16/11/2022	12.45pm	Drop Cut	2215	Brandy Hill Dr- Closest Neighbour (4387) Quarry Driveway (4111)	Nil Trigger 104	Nil Trigger 0.67
31/10/2022	12.45pm	Drop Cut	2213	Brandy Hill Dr- Closest Neighbour (4387) Quarry Driveway (4111)	Nil Trigger 114.1	Nil Trigger 0.56
19/10/2022	10.30pm	Drop Cut	2214	Brandy Hill Dr- Closest Neighbour (4387) Quarry Driveway (4111)	88.7 108.3	0.58 0.86
4/10/2022	12.32pm	Drop Cut	2212	Brandy Hill Dr- Closest Neighbour (4387) Quarry Driveway (4111)	98.2 101.2	0.63 0.55
20/09/2022	10.59am	Drop Cut	2211	Brandy Hill Dr- Closest Neighbour (4387) Quarry Driveway (4111)	82.6 109.2	0.62 0.49
1/09/2022	2.08pm	Drop Cut	2210	Brandy Hill Dr- Closest Neighbour (4387) Quarry Driveway (4111)	76.6 106.7	0.59 0.89
10/08/2022	2.33pm	Drop Cut	2209	Brandy Hill Dr- Closest Neighbour (4387) Quarry Driveway (4111)	88.7 106	1.03 1.09
19/07/2022	2.05pm	Drop Cut	2208	Brandy Hill Dr- Closest Neighbour (4387) Quarry Driveway (4111)	82.6 101.9	0.62 0.68
21/06/2022	2.05pm	Drop Cut	2207	Brandy Hill Dr- Closest Neighbour (4387) Quarry Driveway (4111)	82.3 105	0.9 0.92
30/05/2022	4.29pm	Drop Cut	2206	Brandy Hill Dr- Closest Neighbour (4387) Quarry Driveway (4111)	85.5 105.5	0.41 0.60
26/04/2022	2.25pm	Drop Cut	2205	Brandy Hill Dr- Closest Neighbour (4387) Quarry Driveway (4111)	76.2 107	0.67 0.59
5/04/2022	1.10pm	Drop Cut	2204	Brandy Hill Dr- Closest Neighbour (4387) Quarry Driveway (4111)	Nil Trigger 104.8	Nil Trigger 0.81
7/03/2022	1.07pm	Drop Cut	2203	Brandy Hill Dr- Closest Neighbour (4387) Quarry Driveway (4111)	Nil Trigger 109.3	Nil Trigger 0.77
16/02/2022	12.26 pm	Drop Cut	2201	Brandy Hill Dr- Closest Neighbour (4387) Quarry Driveway (4111)	82.3 110.8	0.70 0.52
12/01/2022	12.54pm	Drop Cut	2117	Brandy Hill Dr- Closest Neighbour (4387) Quarry Driveway (4111)	Nil Trigger 95.7	Nil Trigger 0.72
2021						
8/12/2021	15:01pm	Drop cut	2116	Brandy Hill Dr- Closest Neighbour (4387) Quarry Driveway (4111)	82.3 98.5	0.28 0.67
17/11/2021	11:58am	Drop cut	2115	Brandy Hill Dr- Closest Neighbour (4387) Quarry Driveway (4111)	85.8 103	0.55 0.67
25/10/2021	13:43pm	Drop cut	2114	Brandy Hill Dr- Closest Neighbour (4387) Quarry Driveway (4111)	Nil Trigger 102.7	Nil Trigger 0.63
29/09/2021	13:05pm	Drop cut	2113	Brandy Hill Dr- Closest Neighbour (4387) Quarry Driveway (4111)	82.3 97.5	0.47 0.71

13/09/2021	13:30pm	Drop cut		Brandy Hill Dr- Closest Neighbour (4387)	97.1	0.48	
			2112	Quarry Driveway (4111)	103.5	0.54	
30/08/2021	14:20pm	Drop cut	2110, 2111	Brandy Hill Dr- Closest Neighbour	76.2	0.49	
				Quarry Driveway	102.7	0.50	
3/08/2021	13:07pm	Drop cut	2109	Brandy Hill Dr- Closest Neighbour (4387)	nil trigger	nil trigger	
				Quarry Driveway (4111)	101	0.67	
1/07/2021	12:28pm	Drop cut	2108	Brandy Hill Dr- Closest Neighbour (4387)	nil trigger	nil trigger	
				Quarry Driveway (4111)	109.7	0.63	
8/06/2021	14:23pm	Drop cut	2107	Brandy Hill Dr- Closest Neighbour (4387)	nil trigger	nil trigger	
				Quarry Driveway (4111)	109.2	0.74	
17/05/2021	13:04pm	Drop cut	2106	Brandy Hill Dr- Closest Neighbour (4387)	nil trigger	nil trigger	
				Quarry Driveway (4111)	108.7	0.61	
20/04/2021	12:27pm	Drop cut	2105	3 Giles Rd, Brandy Hill- 32 659461 37445706, 151 665	109.3	0.59	
				Brandy Hill Dr- Closest Neighbour	nil trigger	nil trigger	
16/03/2021	12:24pm	Drop cut	2104	Quarry Driveway	101.8	0.85	
24/02/2021	13:18pm	Drop cut	2103	Brandy Hill Dr- Closest Neighbour (4387)	nil trigger	nil trigger	
				Quarry Driveway (4111)	111	0.60	
8/02/2021	12:11pm	Drop cut	2102	Brandy Hill Dr- Closest Neighbour	nil trigger	nil trigger	
				Quarry Driveway	104.8	0.69	
27/01/2021	11:34 AM	Old haul road	2101	Brandy Hill Dr- Closest Neighbour (4387)	nil trigger	nil trigger	
				Quarry Driveway (4111)	111.5	0.39	
2020							
26/11/2020	11:36am	Old haul road	2017	Brandy Hill Dr- Closest Neighbour (4387)	nil trigger	nil trigger	
				Quarry Driveway (4111)	102.1	0.79	
24/11/2020	10:38am	Floor 2	2018	Brandy Hill Dr- Closest Neighbour (4387)	nil trigger	nil trigger	
				Quarry Driveway (4111)	nil trigger	nil trigger	
6/11/2020	12:09 PM	Drop Cut	2016	Brandy Hill Dr- Closest Neighbour	nil trigger	nil trigger	
				Quarry Driveway	98.1	0.43	
19/10/2020	10:46 AM	Floor 1	2015	Brandy Hill Dr- Closest Neighbour (4387)	nil trigger	nil trigger	
				Quarry Driveway (4111)	101.4	0.82	
17/09/2020	12:09 PM	Floor 1	2014	1 Giles Road, Brandy Hill, E374359, N 6385578	nil trigger	nil trigger	
				Quarry Driveway	108.4	0.47	
24/08/2020	2:04 PM	Floor 1	2013	Brandy Hill Dr- Closest Neighbour (4387)	nil trigger	nil trigger	
				Quarry Driveway (4111)	110.3	0.5	
17/08/2020	11:18 AM	Floor 2	2012	Mooghin Road, Seaham, E378864, N 6385463	nil trigger	nil trigger	
				Quarry Driveway (4111)	108	0.28	
4/08/2020	3:10 PM	Floor 2	2011-2	Brandy Hill Dr- Closest Neighbour (4387)	nil trigger	nil trigger	
				Quarry Driveway (4111)	115	2.65	
27/07/2020	9:47 AM	Floor 1	2011-1	Brandy Hill Dr- Closest Neighbour (4387)	nil trigger	nil trigger	
				Quarry Driveway (4111)	109.6	0.52	
1/07/2020	12:14 PM	Floor 1	2010	Brandy Hill Dr- Closest Neighbour	nil trigger	nil trigger	
				Quarry Driveway	104.2	0.5	
16/06/2020	3:42 PM	Drop Cut	2009	Brandy Hill Dr- Closest Neighbour	nil trigger	nil trigger	
				Quarry Driveway	98.4	0.25	
18/05/2020	1:21 PM	Floor 2	2008	Brandy Hill Dr- Closest Neighbour	nil trigger	nil trigger	
				Quarry Driveway	112.8	0.73	
14/04/2020	4:33 PM	Floor 2	2007	Brandy Hill Dr- Closest Neighbour	nil trigger	nil trigger	
				Quarry Driveway	111.4	0.6	
24/03/2020	1:42 PM	Floor 2 & 3	2005 & 2006	Brandy Hill Dr- Closest Neighbour	nil trigger	nil trigger	
				Quarry Driveway	110.1	0.52	
9/03/2020	4:09 PM	Floor 1	2004	Brandy Hill Dr- Closest Neighbour	nil trigger	nil trigger	
				Quarry Driveway	107.8	0.32	
25/02/2020	12:40 PM	Floor 3	2003	Brandy Hill Dr- Closest Neighbour	nil trigger	nil trigger	
				Quarry Driveway	106	0.42	
10/02/2020	12:32 PM	Floor 1 & 2	2001 & 2002	Brandy Hill Dr- Closest Neighbour	nil trigger	nil trigger	
				Quarry Driveway	104.7	0.63	
30/01/2020	12:18 PM	Floor 2	1918	Brandy Hill Dr- Closest Neighbour	nil trigger	nil trigger	
				Quarry Driveway	106.9	1.03	
2019							
17/12/2019	11:10 AM	Floor 3	1917	Brandy Hill Dr- Closest Neighbour	nil trigger	nil trigger	
				Quarry Driveway	nil trigger	nil trigger	
22/11/2019	1:40 PM	Floor 1 + ramp	1916	Brandy Hill Dr- Closest Neighbour	nil trigger	nil trigger	Production shot grey rock
				Quarry Driveway	100.9	0.4	
4/11/2019	3:35 PM	Drop Cut	1915	Brandy Hill Dr- Closest Neighbour	nil trigger	nil trigger	New sump for de-water pump
				Quarry Driveway	102.8	0.7	
22/10/2019	12:31 PM	Floor 1	1914	Brandy Hill Dr- Closest Neighbour	nil trigger	nil trigger	Production shot. Grey rock.
				Quarry Driveway	85.3	0.5	
4/10/2019	12:03 PM	Floor 1	1913	Brandy Hill Dr - Closest Neighbour	nil trigger	nil trigger	Production shot grey/pink rock
				Quarry Driveway	102.2	0.6	
12/09/2019	2:20 PM	Floor 1	1912	Brandy Hill Dr- Closest Neighbour	nil trigger	nil trigger	Production shot good grey/blue rock.
				Quarry Driveway	112.6	0.31	
20/07/2019	2:10 PM	Floor 2 & Floor 1	1909/1911	Brandy Hill Dr - Closest Neighbour	nil trigger	nil trigger	Two shots fired together over top of each other.
				Quarry Driveway	114.4	1	
5/07/2019	12:31 PM	Floor 1	1910	Brandy Hill Dr - Closest Neighbour	nil trigger	nil trigger	Small production blast all went well
				Quarry Driveway	107.2	0.3	
17/06/2019	3:00 PM	Floor 2	1908	Brandy Hill Dr - Closest Neighbour	nil trigger	nil trigger	Production shot Pink/grey
				Quarry Driveway	112.5	1.4	
27/05/2019	12:05 PM	Floor 1	1907	Brandy Hill Drive - Closest Neighbour	nil trigger	nil trigger	Small production blast all went well
				Quarry Driveway	114.2	0.4	
20/05/2019	10:32 AM	Floor 1	1906	Brandy Hill Dr- Closest Neighbour	nil trigger	nil trigger	Small production blast all went well
				Quarry Driveway	106.1	0.25	
7/05/2019	11:00 AM	Floor 1	1905	Brandy Hill Dr- Closest Neighbour	nil trigger	nil trigger	Small shot, all went very well
				Quarry Driveway	nil trigger	nil trigger	
23/04/2019	1:29 PM	Floor 5	1903	Brandy Hill Dr- Closest Neighbour	nil trigger	nil trigger	Went very well no problems
				Quarry Driveway	104.1	0.4	
4/04/2019	12:16 PM	Floor 1	1904	Brandy Hill Dr- Closest Neighbour	nil trigger	nil trigger	Went very well no problems
				Quarry Driveway	103	0.5	
20/03/2019	11:59 AM	Floor 1	1902	Brandy Hill Dr- Closest Neighbour	nil trigger	nil trigger	Went very well no problems
				Quarry Driveway	104.8	0.4	
27/02/2019	12:29 PM	Floor 1	1901	Brandy Hill Dr - Closest Neighbour	nil trigger	nil trigger	Went very well no problems
				Quarry Driveway	97.3	0.9	
2018							
17/12/2018	3:57 PM	Floor 2 south side corner	1810	Brandy Hill Dr- Closest Neighbour	87	0.73	Went well, very good fragmentation
				Quarry driveway	105.9	1.12	
8/11/2018	1:03 PM	Floor 2 south side	1809	Brandy Hill Dr- Closest Neighbour	104.5	0.7	Large shot 109000 tons all went to plan
				Quarry driveway	110.3	1.06	
2/10/2018	11:40 AM	Floor 4	1808	Brandy Hill Dr- Closest Neighbour	90.5	0.34	Went very well.
				Quarry driveway	103.8	0.3	
				Brandy Hill Dr- Closest Neighbour	nil trigger	nil trigger	Went very well no problems

10/09/2018	1:06 PM	Floor 1	1807	Quarry driveway	nil trigger	nil trigger	
22/08/2018	1:44 PM	Floor 1	1806	Brandy Hill Dr -Closest Neighbour	90.5	0.24	Went well no problems.
30/07/2018	3:41 PM	Floor 2	1805	Brandy Hill Dr -Closest Neighbour	nil trigger	nil trigger	
21/06/2018	12:00 PM	Floor 1	1804	Brandy Hill Dr -Closest Neighbour	97.1	0.61	Went well no problems.
22/05/2018	3:14 PM	Floor 1	1803	Brandy Hill Dr -Closest Neighbour	108.1	0.33	Went well no problems.
12/04/2018	12:04 PM	Floor 4	1802	Brandy Hill Dr -Closest Neighbour	74.7	0.6	Went well no problems.
16/03/2018	1:39 PM	Floor 1	1801	Brandy Hill Dr -Closest Neighbour	99.4	0.4	Went well good fragmentation and muck pile.
16/02/2018	3:18 PM	Floor 2	1723	Brandy Hill Dr -Closest Neighbour	102.3	0.5	Went very well, some over size cap rock on top.
2017							
19/12/2017	3:16 PM	Floor 1	1722	Brandy Hill Dr -Closest Neighbour	95.6	0.33	Went well good fragmentation.
28/11/2017	1:28 PM	Floor 1	1721	Brandy Hill Dr -Closest Neighbour	nil trigger	nil trigger	All went very well.
27/10/2017	2:02 PM	Floor 2	1720	Brandy Hill Dr -Closest Neighbour	110.1	0.66	All went very well.
19/10/2017	10:44 AM	Floor 3	1717	Brandy Hill Dr -Closest Neighbour	nil trigger	nil trigger	Shot went well. Some contamination/ash.
9/10/2017	10:35 AM	Drop cut.	1719	Brandy Hill Dr -Closest Neighbour	nil trigger	nil trigger	All went well. Good fragmentation
28/09/2017	11:10 AM	Drop cut	1718	Brandy Hill Dr -Closest Neighbour	nil trigger	nil trigger	Down load front, need oversize came out well.
14/09/2017	3:15 PM	Floor 1	1716	Brandy Hill Dr -Closest Neighbour	111.7	0.43	Windy when fired, came out well.
24/08/2017	4:31 PM	Floor 2	1715	Brandy Hill Dr -Closest Neighbour	97.5	1.3	Large shot 7990tons designed over size on front.
15/08/2017	2:43 PM	Floor 1	1714	Brandy Hill Dr -Closest Neighbour	108.8	0.47	All went well. Well fragmented.
2/08/2017	12:56 PM	Floor 3	1711	Brandy Hill Dr -Closest Neighbour	104.1	0.35	Came out well, some back break
20/07/2017	11:25 AM	Drop cut	1713	Brandy Hill Dr -Closest Neighbour	101.3	0.3	All went well.
6/07/2017	11:40 AM	Floor 2	1712	Brandy Hill Dr -Closest Neighbour	84.1	0.44	All went well.
15/06/2017	2:47 PM	Floor 1	1710	Brandy Hill Dr -Closest Neighbour	nil trigger	nil trigger	All went well.
30/05/2017	11:08 AM	Floor 2	1709	Brandy Hill Dr -Closest Neighbour	101.6	0.72	All went well.
11/05/2017	2:02 PM	Floor 1	1708	Brandy Hill Dr -Closest Neighbour	96.6	0.46	Large shot all went well 46000tons
20/04/2017	10:19 AM	Floor 2	1707	Brandy Hill Dr -Closest Neighbour	103.1	1.14	All went well.
7/04/2017	10:15 AM	Floor 2	1706	Brandy Hill Dr -Closest Neighbour	nil trigger	nil trigger	All went well.
27/03/2017	11:11 AM	Floor 3 south side of pit	1705	Brandy Hill Dr -Closest Neighbour	nil trigger	nil trigger	All went well.
10/03/2017	11:00 AM	Floor 2 south side	1704	Brandy Hill Dr -Closest Neighbour	97.5	0.56	Overcast day, all went well.
1/03/2017	11:58 AM	Floor 1	1703	Brandy Hill Dr -Closest Neighbour	nil trig	nil trig	
17/02/2017	10:42 AM	Floor 2 south side	1702	Brandy Hill Dr -Closest Neighbour	nil trigger	nil trigger	Hot day, overcast with a scattered shower
2/02/2017	9:57 AM	Floor 1 drop cut north side	1701	Brandy Hill Dr -Closest Neighbour	nil trigger	nil trigger	Hot day slightly overcast, all went well.
19/01/2017	11:19 AM	Floor 2 south side	1623	Brandy Hill Dr -Closest Neighbour	103.8	0.5	Overcast
2016							
15/12/2016	9:42 AM	Floor 1 drop cut	1622	Brandy Hill Dr -Closest Neighbour	nil trigger	nil trigger	
1/12/2016	10:35 AM	Floor 1 drop cut	1620	Brandy Hill Dr -Closest Neighbour	nil trigger	nil trigger	
21/11/2016	10:07 AM	Floor 2	1619	Brandy Hill Dr -Closest Neighbour	nil trigger	nil trigger	
2/11/2016	11:03 AM	Floor 1 drop cut	1618	Brandy Hill Dr -Closest Neighbour	nil trigger	nil trigger	
19/10/2016	10:11 AM	Floor 1 drop cut	1617	Brandy Hill Dr -Closest Neighbour	nil trigger	nil trigger	
9/10/2016	12:23 PM	Floor 2	1616	Brandy Hill Dr -Closest Neighbour	112.4	0.8	
22/09/2016	11:23 AM	Floor 3 Development area	1615	Brandy Hill Dr -Closest Neighbour	nil trigger	nil trigger	
8/09/2016	11:09 AM	Floor 1 D/Cut	1614	Brandy Hill Dr -Closest Neighbour	nil trigger	nil trigger	
25/08/2016	11:33 AM	Floor 2	1613	Brandy Hill Dr -Closest Neighbour	100.7	0.5	
11/08/2016	12:05 PM	Floor 2	1612	Brandy Hill Dr -Closest Neighbour	nil trigger	nil trigger	
26/07/2016	1:00 PM	Floor 3 Development area	1611	Brandy Hill Dr -Closest Neighbour	nil trigger	nil trigger	
14/07/2016			1610	Brandy Hill Dr -Closest Neighbour	105.0		
9/06/2016	12:49 PM	Floor 3 Development	1609	Brandy Hill Dr -Closest Neighbour	nil trigger	nil trigger	
24/05/2016	10:29 AM	Floor 1 D/Cut	1608	Brandy Hill Dr -Closest Neighbour	nil trigger	nil trigger	
17/05/2016	10:40 AM	Floor 2	1607	Brandy Hill Dr -Closest Neighbour	102.5	0.5	
29/04/2016	1:04 PM	Floor 1 D/Cut	1606	Brandy Hill Dr -Closest Neighbour	103.8	0.5	
20/04/2016	2:32 PM	Floor 2	1605	Brandy Hill Dr -Closest Neighbour	98.6	0.5	
7/04/2016	10:10 AM	Floor 3 Development	1604	Brandy Hill Dr -Closest Neighbour	nil trigger	nil trigger	
23/03/2016	2:22 PM	Floor 2	1603	Brandy Hill Dr -Closest Neighbour	102.1	0.4	
9/03/2016	1:04 PM	Floor 2	1602	Brandy Hill Dr -Closest Neighbour	102.9	1.6	
24/02/2016	11:41 AM	Floor 3	1601	Brandy Hill Dr -Closest Neighbour	102.9	0.4	
27/01/2016	12:50 AM	Floor 2	1530	Brandy Hill Dr -Closest Neighbour	112	0.2	
13/01/2016	10:05 AM	Floor 3	1529	Brandy Hill Dr -Closest Neighbour	nil trigger	nil trigger	
2015							
10/12/2015	2:53 PM	Floor 2	1528	Brandy Hill Dr -Closest Neighbour	105.7	0.7	
10/12/2015	2:52 PM	Floor 2	1527	Brandy Hill Dr -Closest Neighbour	105.7	0.7	Shot 1527 & 1528 tied in and fired together.
25/11/2015	10:35 AM	Floor 2	1526	Brandy Hill Dr -Closest Neighbour	102.9	1.22	
11/11/2015	10:17 AM	Floor 3 Devel	1525	Brandy Hill Dr -Closest Neighbour	nil trigger	nil trigger	
30/10/2015	1:06 PM	Floor 2 south	1523	Brandy Hill Dr -Closest Neighbour	102.9	0.73	
16/10/2015	10:41 AM	Drop cut	1522	Brandy Hill Dr -Closest Neighbour	101.5	0.29	
16/10/2015	10:42 AM	Floor 3 Devel	1521	Brandy Hill Dr -Closest Neighbour	nil trigger	nil trigger	
2/10/2015	11:40 AM	Floor 2	1520	Brandy Hill Dr -Closest Neighbour	nil trigger	nil trigger	
18/09/2015	10:58 AM	Floor 1 D/Cut	1519	Brandy Hill Dr -Closest Neighbour	103.1	0.51	
8/09/2015	12:47 PM	Floor 2	1517	Brandy Hill Dr -Closest Neighbour	97.3	0.51	
1/09/2015	10:07 AM	Floor 1 D/Cut	1518	Brandy Hill Dr -Closest Neighbour	nil trigger	nil trigger	
7/08/2015	10:56 AM	Floor 1 D/Cut	1516	Brandy Hill Dr -Closest Neighbour	100	0.31	
24/07/2015	10:27 AM	Floor 1 D/Cut	1515	Brandy Hill Dr -Closest Neighbour	108.5	0.2	
15/07/2015	10:51 AM	Floor 1 D/Cut	1514	Quarry Driveway	103.8	0.28	
3/07/2015	11:10 AM	Floor 1 D/Cut	1513	Brandy Hill Dr -Closest Neighbour	nil trigger	nil trigger	
19/06/2015	9:28 AM	Floor 2	1512	Brandy Hill Dr -Closest Neighbour	nil trigger	nil trigger	
5/06/2015	10:56 AM	Drop cut	1509	Brandy Hill Dr -Closest Neighbour	101.2	0.1	
29/05/2015	11:07 AM	Floor 3 haul R	1511	Brandy Hill Dr -Closest Neighbour	101.3	1.16	
7/05/2015	9:57 AM	Floor 3 haul R	1510	Brandy Hill Dr -Closest Neighbour	99.4	3.01	
10/04/2015	11:39 AM	Floor 3 haul R	1508	Brandy Hill Dr -Closest Neighbour	101.7	0.65	
27/03/2015	11:23 AM	Drop cut	1507	Brandy Hill Dr -Closest Neighbour	98.2	0.22	
11/03/2015	11:02 AM	Drop Cut+trim	1506	Brandy Hill Dr -Closest Neighbour	102.6	0.65	
27/02/2015	10:11 AM	Drop cut	1504	Brandy Hill Dr -Closest Neighbour	94.6	0.6	
20/02/2015	9:37 AM	Floor 3	1505	Brandy Hill Dr -Closest Neighbour	100.1	0.58	
3/02/2015	10:48 AM	Drop cut	1503	Brandy Hill Dr -Closest Neighbour	101.8	0.61	
16/01/2015	9:40 AM	Floor 2	1502	Brandy Hill Dr -Closest Neighbour	98	0.55	
16/01/2015	10:03 AM	Floor 3	1501	Quarry Driveway	102.3	0.54	

Summary of Noise Monitoing 13 June 2023					
Location and Period	Noise limits in dB(A)		Estimated site contribution dB(A)		Compliant?
	<i>Laeq, 15 min</i>	<i>LA1, 1min</i>	<i>Laeq, 15 min</i>	<i>LA1, 1min</i>	
<i>R1 (Giles Road) – Day</i>	36	N/A	<30	N/A	Yes
<i>R1 (Giles Road) – Evening</i>	36	N/A	Inaudible	N/A	Yes
<i>R1 (Giles Road) – Night</i>	36	45	Inaudible	Inaudible	Yes
<i>R2 (Brandy Hill Drive) - Day</i>	36	N/A	Inaudible	N/A	Yes
<i>R2 (Brandy Hill Drive) - Evening</i>	36	N/A	Inaudible	N/A	Yes
<i>R2 (Brandy Hill Drive) - Night</i>	36	45	Inaudible	Inaudible	Yes
<i>R3 (Mooghin Road) - Day</i>	36	N/A	<35	N/A	Yes
<i>R3 (Mooghin Road) - Evening</i>	36	N/A	Inaudible	N/A	Yes
<i>R3 (Mooghin Road) - Night</i>	36	45	<35	<45	Yes

Summary of Repeat Noise Monitoing 2 June 2022					
Location and Period	Noise limits in dB(A)		Estimated site contribution dB(A)		Compliant?
	<i>Laeq, 15 min</i>	<i>LA1, 1min</i>	<i>Laeq, 15 min</i>	<i>LA1, 1min</i>	
<i>R1 (Giles Road) – Day</i>	36	N/A	Inaudible	N/A	Yes
<i>R2 (Brandy Hill Drive) – Day</i>	36	N/A	Inaudible	N/A	Yes
<i>R3 (Mooghin Road) – Day</i>	36	N/A	Inaudible	N/A	Yes

Summary of Noise Monitoing 19 May 2022					
Location and Period	Noise limits in dB(A)		Estimated site contribution dB(A)		Compliant?
	<i>Laeq, 15 min</i>	<i>LA1, 1min</i>	<i>Laeq, 15 min</i>	<i>LA1, 1min</i>	
<i>R1 (Giles Road) – Day</i>	36	N/A	Inaudible	N/A	Yes
<i>R1 (Giles Road) – Evening</i>	36	N/A	Inaudible	N/A	Yes
<i>R1 (Giles Road) – Night</i>	36	45	Inaudible	Inaudible	Yes
<i>R2 (Brandy Hill Drive) - Day</i>	36	N/A	45	N/A	(temperature
<i>R2 (Brandy Hill Drive) - Evening</i>	36	N/A	Inaudible	N/A	Yes
<i>R2 (Brandy Hill Drive) - Night</i>	36	45	Inaudible	Inaudible	Yes
					No
<i>R3 (Mooghin Road) - Day</i>	36	N/A	40	N/A	(temperature inversion)
<i>R3 (Mooghin Road) - Evening</i>	36	N/A	Inaudible	N/A	Yes
<i>R3 (Mooghin Road) - Night</i>	36	45	Inaudible	Inaudible	Yes

Summary of Noise Monitoing 7 & 8 June 2021					
Location and Period	Noise limits in dB(A)		Estimated site contribution dB(A)		Compliant?
	<i>Laeq, 15 min</i>	<i>LA1, 1min</i>	<i>Laeq, 15 min</i>	<i>LA1, 1min</i>	
<i>R1 (Giles Road) – Day</i>	36	N/A	<30	N/A	Yes
<i>R1 (Giles Road) – Evening</i>	36	N/A	Inaudible	N/A	Yes
<i>R1 (Giles Road) – Night</i>	36	45	Inaudible	Inaudible	Yes
<i>R2 (Brandy Hill Drive) - Day</i>	36	N/A	Inaudible	N/A	Yes
<i>R2 (Brandy Hill Drive) - Evening</i>	36	N/A	Inaudible	N/A	Yes
<i>R2 (Brandy Hill Drive) - Night</i>	36	45	Inaudible	Inaudible	Yes
<i>R3 (Mooghin Road) - Day</i>	36	N/A	<30	N/A	Yes
<i>R3 (Mooghin Road) - Evening</i>	36	N/A	Inaudible	N/A	Yes
<i>R3 (Mooghin Road) - Night</i>	36	45	Inaudible	Inaudible	Yes

Estimated site contribution (dBA)			Compliant?
<i>LAeq, 15 min</i>	<i>LA1, 1 min</i>		
<26	44		Yes
<28	N/A		Yes
<30	N/A		Yes
<30	N/A		Yes
<13	N/A		Yes
<10	30		Yes

Summary of Noise Monitoing 1 & 2 April 2020					
Location and Period	Noise limits in dB(A)		Estimated site contribution dB(A)		Compliant?
	<i>Laeq, 15 min</i>	<i>LA1, 1min</i>	<i>Laeq, 15 min</i>	<i>LA1, 1min</i>	
<i>R1 (Giles Road) – Day</i>	36	N/A	<35	N/A	Yes
<i>R1 (Giles Road) – Evening</i>	36	N/A	<35	N/A	Yes
<i>R1 (Giles Road) – Night</i>	36	45	35	<45	Yes
<i>R2 (Brandy Hill Drive) - Day</i>	36	N/A	Inaudible	N/A	Yes
<i>R2 (Brandy Hill Drive) - Evening</i>	36	N/A	Inaudible	N/A	Yes
<i>R2 (Brandy Hill Drive) - Night</i>	36	45	Inaudible	Inaudible	Yes
<i>R3 (Mooghin Road) - Day</i>	36	N/A	Inaudible	N/A	Yes
<i>R3 (Mooghin Road) - Evening</i>	36	N/A	Inaudible	N/A	Yes
<i>R3 (Mooghin Road) - Night</i>	36	45	Inaudible	Inaudible	Yes

Summary of Noise Monitoring 12 & 15 April 2019					
Location and Period	Criteria Level (dBA)		Estimated site contribution (dBA)		Compliant?
	<i>Laeq, 15 min</i>	<i>LA1, 1min</i>	<i>LAeq, 15 min</i>	<i>LA1, 1 min</i>	
<i>R1 (Giles Road) – Day</i>	36	N/A	Not Audible	Not Applicable	yes
<i>R1 (Giles Road) – Evening</i>	36	N/A	Not Audible	Not Applicable	yes
<i>R1 (Giles Road) – Night</i>	45	45	Not Audible	Not Applicable	yes
<i>R2 (Brandy Hill Drive) - Day</i>	36	N/A	Not Audible	Not Applicable	yes
<i>R2 (Brandy Hill Drive) - Evening</i>	36	N/A	Not Audible	Not Applicable	yes
<i>R2 (Brandy Hill Drive) - Night</i>	45	45	Not Audible	Not Applicable	yes
<i>R3 (Mooghin Road) - Day</i>	36	N/A	<30	Not Applicable	yes
<i>R3 (Mooghin Road) - Evening</i>	36	N/A	Not Audible	Not Applicable	yes
<i>R3 (Mooghin Road) - Night</i>	45	45	<30	35	yes

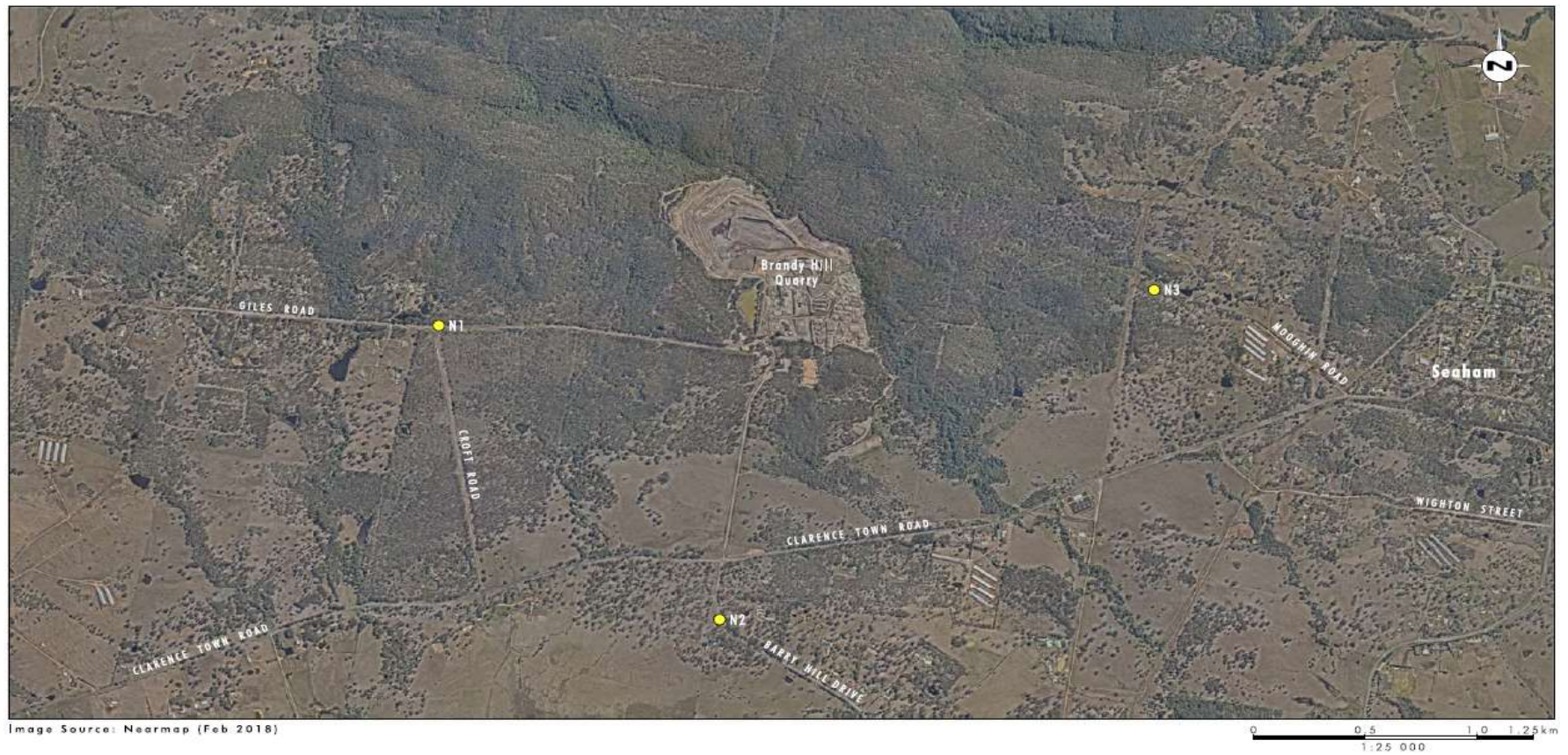
bf Noise Monitoring 11 & 19 April 2018

Location and Period	Criteria Level (dBA)		Measured noise levels (dBA)		
	<i>Laeq, 15 min</i>	<i>LA1, 1min</i>	<i>LA90 (15min)</i>	<i>LAeq (15min)</i>	<i>LA1 (1min)</i>
<i>R1 (Giles Road) – Night</i>	36	45	36	47	67
<i>R1 (Giles Road) – Day</i>	36	N/A	34	42	57
<i>R2 (Brandy Hill Drive) - Night</i>	36	45	44	56	82
<i>R2 (Brandy Hill Drive) - Day</i>	36	N/A	44	66	83
<i>R3 (Mooghin Road) - Night</i>	36	45	30	42	64
<i>R3 (Mooghin Road) - Day</i>	36	N/A	31	41	61

Summary of Noise Monitoring 7 & 8 June 2021

<30

<30



Legend
● Noise Monitoring Location

FIGURE 1.2
Noise Monitoring Locations