

---

**MINUTES EAST GUYONG QUARRY COMMUNITY CONSULTATIVE**

**COMMITTEE MEETING (NO. 02\_2023 Monday 16 October 2023)**

**Meeting Date:** Monday, 16 October 2023

**Start:** 4:06 pm

**Venue:** East Guyong Quarry site office (3410 Mitchell Hwy East Guyong NSW 2798) & Teams

**Present:**

Garry West (GW)	EGQ CCC Chairperson
Chris Cooke (CC)	EGQ Quarry Manager
Zach Curran	EGQ Representative
Mark Holman (MH)	CCC Representative
Steve Harris (SH)	CCC Representative
Sally Gordan (SG)	CCC Representative
Richard Pamplin (RP)	Council Representative
David Fielding (DF)	CCC Representative

- 
- 1 Welcome & Introductions** – GW opened the meeting at 4:05 pm and welcomed all attendees and advised that David Fielding and Nikki Jardine Hail have been appointed by the Department of Planning to be community representatives on the CCC.
  - 2 Apologies** – Tony Gordon. Heather Nicholls, Nikki Jardine Hail and Belinda Pignone
  - 3 Declarations of Interests** – No new declarations.
  - 4 Minutes from the previous meeting**  
  
Draft minutes were circulated for comment and were finalised, and a final copy circulated and will be uploaded to the project website
  - 5 Business Arising**

- Independent Audit & Management Plans referred to BP for advice and action. BP advised the Weed Management Plan has been finalised. The Feral Animal Management Plan is not yet completed. Both Plans form part of the Landscape Management Plan (LMP), which DPE requires updating and therefore both may change. The updated LMP is due by end of November 2023. The Independent Audit report has not been finalised with DPE.
- It was noted that feral pigs had become a local problem for landowners.

## 6 Correspondence

DPE appointment of new community representatives.

## 6 Environmental Update

- Environmental update
  - 2022 Annual review report submitted in March. The 2022 Biennial Western Visual Boundary screen assessment report was missed and self-reported as non-compliance to DPE, which resulted in a warning letter from DPE. The report was completed and submitted in August.
  - DPE has requested that the Landscape Management Plan be updated, which has been commissioned and is due to be drafted by the end of November.
  - Environmental monitoring (noise, blast, water discharge, groundwater and air quality) was completed in the last quarter, as required under the EPL/Management Plans. There were no exceedances. Monitoring data is available on the Hanson website.

## 7 General Business

- Asphalt discussion.
  - RP gave an application update; advising that the exhibition period had been completed and the application has been referred to the Environment Protection Authority (EPA) & Transport for NSW(TfNSW) through the NSW Planning Portal. The EPA & TfNSW have a concurrence role for this type of DA application i.e. a positive response from each agency is required should Cabonne Council ultimately determine that it should be approved. The EPA has yet to respond. TfNSW has sought a new Traffic Impact Assessment by Hanson. Hanson has advised there is no need for an updated Traffic Impact Management Assessment due to no changes in traffic and transport. When the responses are received, Council will then finalise its assessment of the Development Application (DA) before submitting it to a Council meeting for determination.
  - General discussion about and when residents can address Councillors about the DA. CC agreed to advise CCC members when Hanson has submitted responses to outstanding requests.

- CC advised production is expected to increase due to demand mainly for road base for subdivisions. Dust suppression plans are progressing and bush fire control measures under overhead powerlines has been undertaken.
- Drone survey for long term planning of quarry operations has yet to be undertaken.
- Members recommended discussions with LLS regarding rabbit control on quarry land.

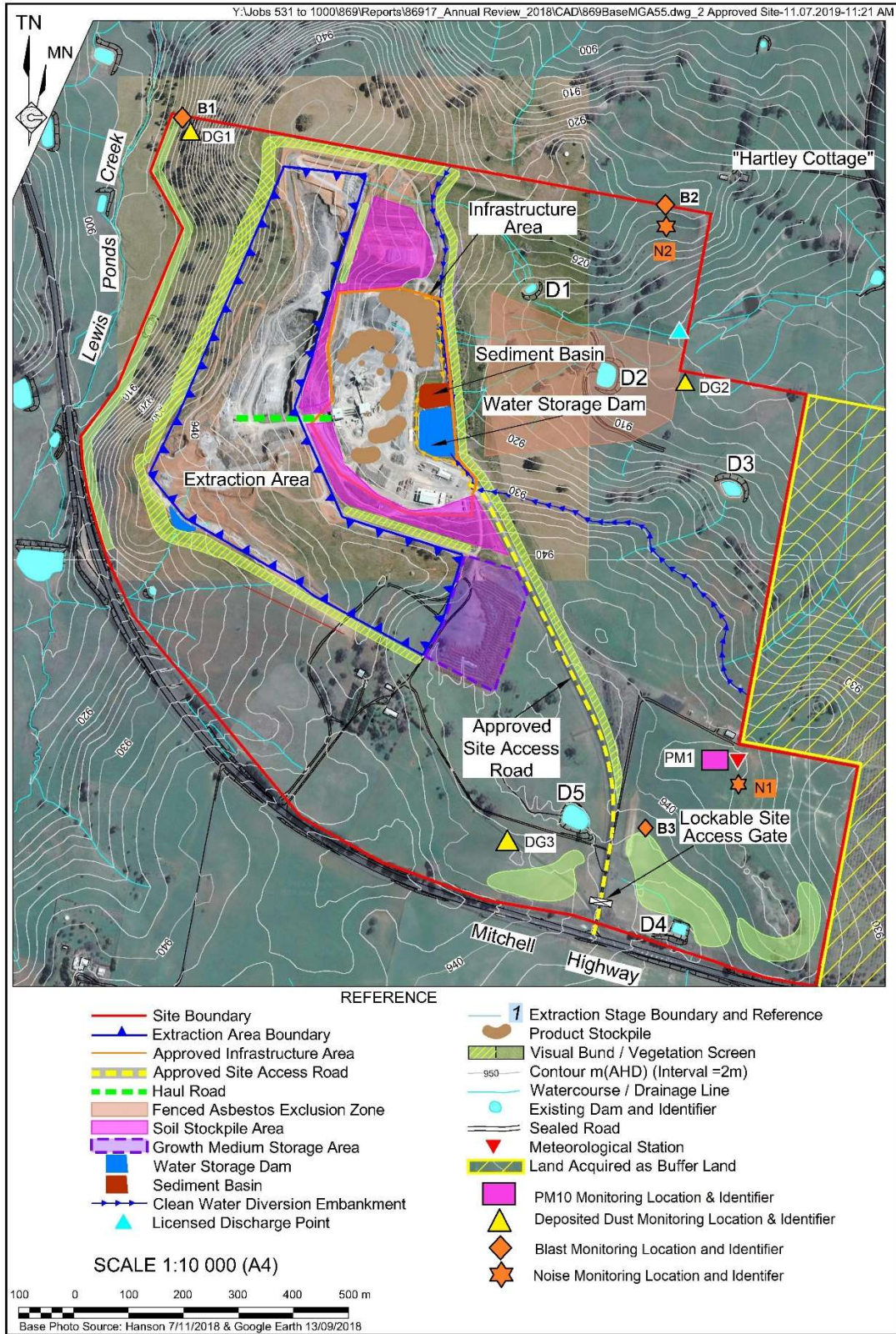
## 8 Next Meeting

- Monday 15 April 2024

Meeting closed 5.05pm

### ACTIONS

ITEM	ISSUE	RESPONSIBILITY
1	Circulate Management Plans and Independent Audit report when finalised	BP
2	Provide website links for environmental monitoring data for the last quarter	BP



**Figure 1: Monitoring locations – East Guyong Quarry ( $g/m^2/month$ ) (2019)**