

East Guyong Quarry noise and blast monitoring

Quarter 2 - 2022

Prepared for Hanson Australia Pty Ltd

July 2022

East Guyong Quarry noise and blast monitoring

Quarter 2 - 2022

Hanson Australia Pty Ltd

E220229 RP2022_2

July 2022

Version	Date	Prepared by	Approved by	Comments
1	14 July 2022	Rick Scully	Katie Teyhan	

Approved by



Katie Teyhan

Associate

14 July 2022

Ground floor 20 Chandos Street

St Leonards NSW 2065

PO Box 21

St Leonards NSW 1590

This report has been prepared in accordance with the brief provided by Hanson Australia Pty Ltd and has relied upon the information collected at the time and under the conditions specified in the report. All findings, conclusions or recommendations contained in the report are based on the aforementioned circumstances. The report is for the use of Hanson Australia Pty Ltd and no responsibility will be taken for its use by other parties. Hanson Australia Pty Ltd may, at its discretion, use the report to inform regulators and the public.

© Reproduction of this report for educational or other non-commercial purposes is authorised without prior written permission from EMM provided the source is fully acknowledged. Reproduction of this report for resale or other commercial purposes is prohibited without EMM's prior written permission.

TABLE OF CONTENTS

1	Introduction	1
2	Methodology	2
2.1	Site operations	2
2.2	Noise monitoring	2
2.3	Assessment locations	2
3	Criteria	4
3.1	Operational noise	4
3.2	Low frequency noise criteria	4
3.3	Blast monitoring	5
4	Results	6
4.1	Noise monitoring results	6
4.2	Blast overpressure and ground vibration	8
5	Conclusion	9

Appendices

Appendix A	Glossary of acoustic terms
Appendix B	Calibration certifications

Tables

Table 3.1	One-third octave low-frequency noise thresholds	4
Table 3.2	Blast overpressure and vibration criteria	5
Table 4.2	Blast emissions monitoring results	8
Table A.1	Glossary of acoustic terms	A.1
Table A.2	Perceived change in noise	A.1

Figures

Figure 2.1	Site layout and monitoring locations	3
Figure A.1	Common noise levels	A.2

1 Introduction

EMM Consulting Pty Ltd (EMM) has been commissioned by Hanson Construction Materials Pty Ltd (NSW) (Hanson) to complete quarterly noise monitoring for the East Guyong Quarry, as required by the site's approved Noise Management Plan. The quarry is located approximately 22 km southeast of Orange, NSW. Operator-attended noise monitoring was undertaken on 27 June 2022.

The following material was referenced as part of this assessment:

- Environment Protection Authority (EPA), *Industrial Noise Policy* (INP) 2000;
- Environment Protection Authority (EPA), *Industrial Noise Policy - Application notes* 2017;
- Environment Protection Authority (EPA), *Noise Policy for Industry* (NPfI) 2017;
- Hanson Construction Materials and R. W. Corkery & Co Pty Limited (RWC), *Noise Management Plan for the East Guyong Quarry* (NMP) – Mod 2 Revision, July 2019;
- Department of Planning and Infrastructure (DP&I), *East Guyong Quarry Project Modification (06_0193 MOD 1) approval* (PA) 2012; and
- Australian and New Zealand Environment Council (ANZEC) 1990, *Technical basis for guidelines to minimise annoyance due to blasting overpressure and ground vibration*.

Analysis of data from five blast events that occurred on 29 March, 14 April, 26 April, 30 May, and 10 June has also been included in this report.

Several technical terms are discussed in this report and are explained in Appendix A.

2 Methodology

2.1 Site operations

At the time of the attended noise monitoring on 27 June 2022, the quarry's activities comprised of the following:

- dump truck and excavator operating in extraction pit;
- crusher and screen plant processing material;
- sales front end loader (FEL) operating in stockpile area (model CAT980H);
- excavator in the stripping area;
- maintenance and repairs across site machinery; and
- heavy vehicle movements/sales.

The quarry's approved hours of operation are:

- Monday to Friday (non-daylight savings) from 6 am to 6 pm;
- Monday to Friday (daylight savings) from 6 am to 8 pm; and
- Saturdays from 7 am to 1 pm.

Material crushing and screening currently occurs on site from Monday to Thursday. This restriction to approved hours is an operational decision by the quarry and aids in the planning for maintenance and repairs.

2.2 Noise monitoring

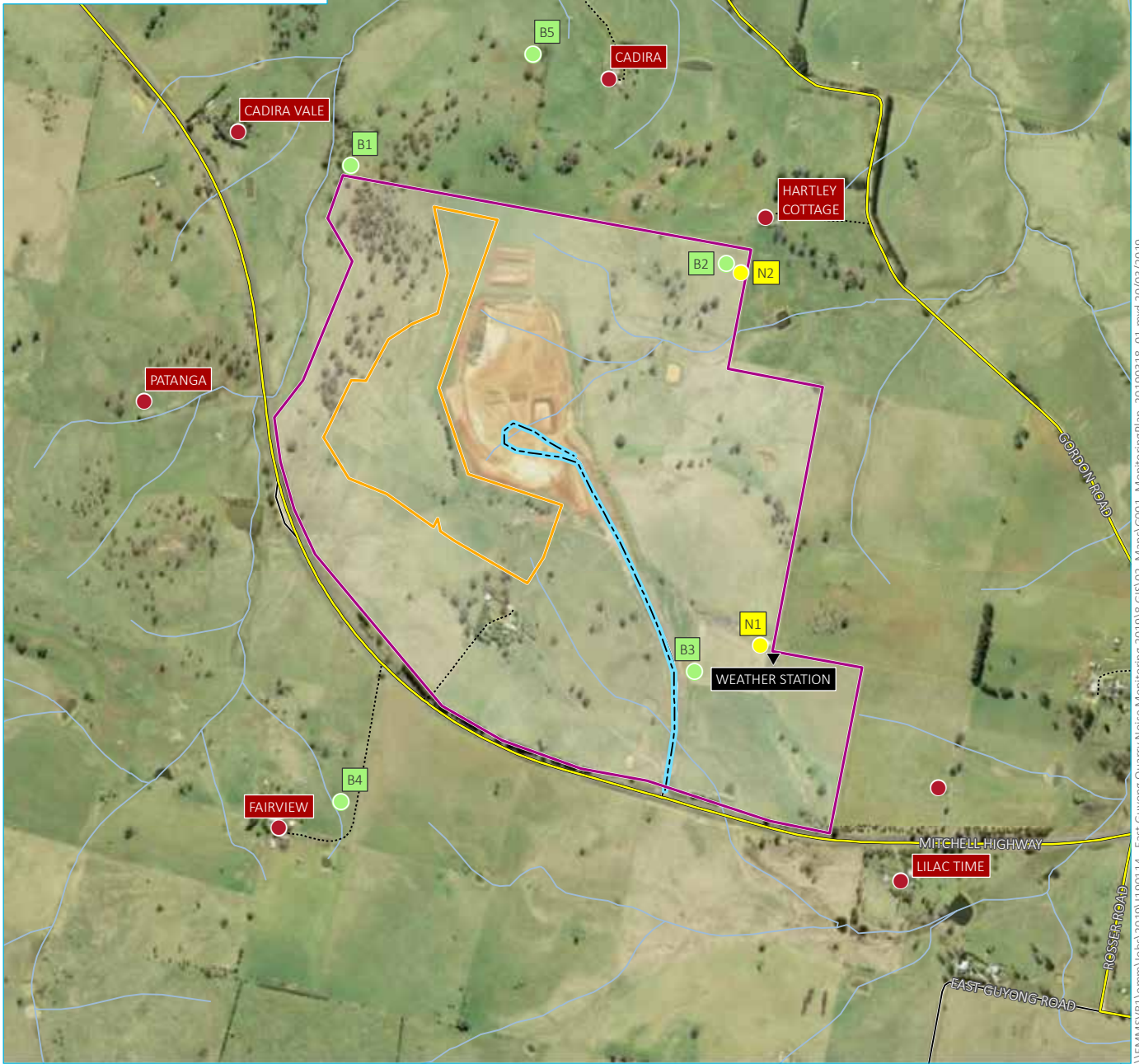
Operator-attended 15-minute noise measurements were conducted at locations N1 and N2, as shown in Figure 2.1, when the quarry was in full operation. The operator quantified the contribution of each significant quarry noise source where possible. Noise monitoring was conducted in general accordance with the INP and Australian Standard AS 1055-2018 *Acoustics - Description and Measurement of Environmental Noise - General Procedures*.

A Brüel & Kjær 2250 Type 1 sound analyser (s/n 2759405) was used for the noise monitoring. The sound analyser was calibrated before and after the completion of the surveys using a Svantech SV36 calibrator (s/n 79952). The instruments were within a current NATA calibration period at the time of the noise monitoring and relevant certificates are provided in Appendix B.

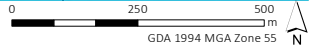
2.3 Assessment locations

The noise monitoring included four 15-minute operator-attended noise measurements during the daytime period on 27 June 2022 to quantify noise emissions from the quarry at locations N1 and N2. Noise monitoring was not conducted prior to 7 am as the quarry was not in operation.

Locations N1 and N2 are near the south-east and north-east boundaries of the site, respectively. Location N1 is approximately 500 m from "Wheatfields", the closest residence situated south-east of the quarry. Location N2 is approximately 150 m from "Hartley Cottage", the closest residence situated north-east of the quarry. These monitoring locations were selected to not inconvenience surrounding residents and are consistent with the approved Noise Management Plan for the East Guyong Quarry (RWC, 2019). Monitoring at these locations, rather than at the residences, also provides a better opportunity to quantify site related noise since they are closer to the operations.



Source: EMM (2019); DFSI (2017); GA (2011)



● Blast monitoring location	 Site boundary	 Main road
● Residences	 Extraction area boundary	 Local road
● Attended noise monitoring location	 Transport route	 Vehicular track
▼ Weather station	 Watercourse/drainage line	

Site location and monitoring plan

East Guyong Quarry
Noise and blast monitoring
Figure 2.1



\\EMMSVR1\emm\jobs\2019\190114 - East Guyong Quarry Noise Monitoring 2019\GIS\02_Maps\G001_MonitoringPlan_20190318_01.mxd 20/03/2019

3 Criteria

3.1 Operational noise

Condition 3(5) of PA 06_0193 states that the noise assessment criteria are $L_{Aeq,15\text{ minute}}$ 35 dB at any residence for all assessment periods. The exception is the "Fairview" residence which has a daytime criterion of $L_{Aeq,15\text{ minute}}$ 36 dB. In accordance with the PA 06_0193, "Noise generated by the project is to be measured in accordance with the relevant requirements, and exemptions (including certain meteorological conditions), of the NSW Industrial Noise Policy."

As per Condition 3(5) of PA 06_0193, to demonstrate compliance at residential locations, the noise monitoring results are to be assessed against the following (intermediate) noise criteria for monitoring locations N1 and N2:

- N1 - $L_{Aeq,15\text{ minute}}$ 43 dB; and
- N2 - $L_{Aeq,15\text{ minute}}$ 50 dB.

It is stated in the NMP that by satisfying criteria at these intermediate locations, quarry noise at neighbouring residences would also satisfy residential criteria. This assumes the presence of soil and product stockpiles, bunding and intervening topography between the site and surrounding residences, which provide some degree of attenuation of site noise.

Further to the above, section 11.1.3 of the INP identifies that a development is deemed to be in non-compliance if the monitored noise levels from the development are more than 2 dB above the statutory limit.

3.2 Low frequency noise criteria

Section 11.2.3 of the NMP states that modification factors in Section 4 of the INP (EPA 2000) should be applied to the measured noise levels where applicable. The INP application notes state that Section 4 of the INP has been withdrawn and the modifying factor adjustments outlined in Fact Sheet C of the NPfI are to be used when assessing the characteristics of a noise source. Fact sheet C of the NPfI (EPA 2017) states that modification factor corrections shall be applied to the measured noise levels where relevant.

Fact sheet C of the NPfI (EPA 2017) provides guidelines for applying modifying factor corrections to account for annoying noise characteristics, such as tonal and low frequency noise emissions. The NPfI specifies that for low frequency noise, a difference of 15 dB or more between site 'C-weighted' and site 'A-weighted' noise emission levels identifies the potential for an unbalanced spectrum and potential increased annoyance.

Where a difference of 15 dB or more between site 'C-weighted' and site 'A-weighted' noise emission levels is identified, the one-third octave noise levels recorded should be compared to the values in Table C2 of the NPfI (EPA 2017), which has been reproduced in Table 3.1 below.

Table 3.1 One-third octave low-frequency noise thresholds

	One-third octave $L_{Zeq,15\text{ minute}}$ threshold level												
Frequency (Hz)	10	12.5	16	20	25	31.5	40	50	63	80	100	125	160
dB (Z)	92	89	86	77	69	61	54	50	50	48	48	46	44

The modifying factor correction to be applied where the site 'C-weighted' and site 'A-weighted' noise emission level is 15 dB or more and:

- where any of the one-third octave noise levels in Table 3.1 are exceeded by up to and including 5 dB and cannot be mitigated, a 2 dB positive adjustment to measured/predicted A-weighted levels applies for the evening/night period; or
- where any of the one-third octave noise levels in Table 3.1 are exceeded by more than 5 dB and cannot be mitigated, a 5 dB positive adjustment to measured/predicted A-weighted levels applies for the evening/night period and a 2 dB positive adjustment applies for the daytime period.

Hence, where possible throughout each survey the operator has estimated the difference between site 'C-weighted' and site 'A-weighted' noise emission levels by matching audible sounds with the response of the analyser ($L_{Ceq}-L_{Aeq}$). Where this was deemed to be 15 dB or greater, the measured one-third octave frequencies have been compared to the values in Table 3.1 to identify the relevant modifying factor correction (if applicable). This method has been applied to this assessment as presented in Section 4.

It is of note that the NPfl (EPA 2017) states that low-frequency noise corrections only apply under the standard and/or noise-enhancing (ie applicable) meteorological conditions.

3.3 Blast monitoring

Blast overpressure and vibration monitoring is managed by Hanson for all blast events. Blast overpressure and ground vibration are monitored at three locations within or at the site's boundary as well as two locations outside of the site's boundary (one south of the Mitchell Highway near the Fairview property and one north of the site near the Cadira property). Monitoring locations are situated closer to blasting locations than the residential structures (refer to Figure 1), and therefore overpressure and vibration levels would likely be lower at the actual residential dwellings than those measured.

Blast emissions criteria for the quarry apply at any residence on privately-owned land surrounding the site and are presented in Table 3.2.

Table 3.2 Blast overpressure and vibration criteria

Location	Airblast overpressure criteria (dB (Linear Peak))	Ground vibration criteria (mm/s (Peak velocity))	Allowable exceedance
Any privately-owned residence surrounding the site.	115	5	5% of the total number of blasts in a 12-month period
	120	10	0%

4 Results

4.1 Noise monitoring results

Noise monitoring results for locations N1 and N2 are presented in Table 4.1. Data recorded by the site's weather station (shown in Figure 1) was used to identify weather conditions during the monitoring period and to determine the applicability of noise limits. Wind speed and direction observations are presented in Table 4.1.

Wind speed averages were above 3 m/s (at 10 m above ground) and there was no rain during all measurements at N1 and N2; hence noise limits were not applicable during all measurements. Low frequency noise modifying factors, in accordance with fact sheet C2 of the NPfl (EPA 2017), were not applied to measured site contributions at N2 as measured noise levels did not exceed the relevant LFN thresholds. Given that East Guyong Quarry was not audible during measurements at N1, LFN modifying factors were not applied to site noise levels at N1. All quarry contributions measured at locations N1 and N2 would have satisfied the relevant noise criteria as per the NMP, had they applied. Location N2 was subject to noise enhancing meteorological conditions (ie source to receiver winds) and still satisfied relevant noise criteria. It is therefore expected that relevant criteria for surrounding residential receivers would also have been satisfied.

Based on the preceding information, noise levels from the quarry satisfy the relevant residential criteria at all assessment locations identified in Condition 3(5) of PA_0193.

Table 4.1 **Attended noise monitoring summary – 27 June 2022**

Location	Start time	Attended noise monitoring results dB					NMP Criteria dB	Meteorological conditions ¹		Criteria Applies? (Y/N)	Exceedance	Comments
		Total measured			Site contribution			Wind speed (m/s)	Wind direction ²			
		L ₉₀	L _{Aeq}	L _{Amax}	LFN mod. factor	L _{Aeq}						
N2	11:04	45	50	67	Nil	45	50	4.2	214	N	N/A	Site audible throughout including engine revs, FEL managing the stockpile/dropping material, trucks being loaded, excavator in the stripping area, and consistent noise from the crusher. Other sources included consistent traffic noise from Mitchell Highway, and frequent noise from birds and planes flying overhead.
N2	11:19	44	47	58	Nil	44	50	4.1	200	N	N/A	Site audible throughout including engine revs, trucks being loaded, FEL managing the stockpile, excavator in the stripping area, and consistent noise from the crusher. Other sources included frequent noise from birds, and occasional noise from the Mitchell Highway.
N1	11:53	40	46	62	Nil	IA	43	4.8	207	N	N/A	Site inaudible. Traffic noise from Mitchell Highway was dominant. Other sources include consistent noise from insects, occasional noise from birds, and a brief aeroplane flyover.
N1	12:09	41	46	57	Nil	IA	43	4.8	187	N	N/A	Site inaudible. Traffic noise from Mitchell Highway was dominant. Other sources include consistent noise from insects, occasional noise from birds, and a brief aeroplane flyover.

- Notes:
1. Meteorological data was obtained from the site weather station at a height of 10 m above ground.
 2. Wind direction reported in degrees from north (0°)
 3. N/A = Not Applicable.
 4. IA = inaudible.

4.2 Blast overpressure and ground vibration

Five blast events occurred at the quarry since the last quarterly noise monitoring in December 2021. The blast overpressure and vibration monitoring results were provided by Hanson and are presented in Table 4.2. The monitoring results show the relevant criteria were satisfied at all monitoring locations (refer to Figure 1).

Table 4.2 Blast emissions monitoring results

Date	Monitoring location	Airblast overpressure level (dB(Linear Peak))		Ground vibration - Peak particle velocity (mm/s)	
		Measured	Criteria ²	Measured	Criteria ²
29/03/2022	B1 ¹	114.3	115	0.1	5
	B2 ¹	-	115	-	5
	B3 ¹	100.2	115	0.83	5
	B4 ¹	102.1	115	1.18	5
	B5 ¹	-	115	-	5
14/04/2022	B1	110.9	115	0.63	5
	B2 ¹	-	115	-	5
	B3 ¹	99.4	115	0.69	5
	B4	101.4	115	1.32	5
	B5 ¹	-	115	-	5
26/04/2022	B1	106.3	115	1.35	5
	B2 ¹	102.2	115	0.9	5
	B3	100.2	115	0.57	5
	B4	111	115	0.08	5
	B5 ¹	105.9	115	1.41	5
30/05/2022	B1	112.2	115	0.56	5
	B2 ¹	100.6	115	0.67	5
	B3	103.9	115	0.77	5
	B4	108	115	1.23	5
	B5 ¹	95.8	115	0.54	5
10/06/22	B1	105.1	115	1.78	5
	B2 ¹	107	115	1.04	5
	B3	-	115	-	5
	B4	-	115	-	5
	B5 ¹	107.4	115	2.14	5

Notes: 1. There was no trigger for this blasting event.
2. Criteria applies at the nearest residential location and not at the monitoring location.

5 Conclusion

EMM has completed an assessment of noise and blasting emissions from East Guyong Quarry operations. Noise monitoring was undertaken at locations around the site on 27 June 2022 as required by, and in accordance with, the site's approved NMP.

Noise limits were not applicable for all measurements due to wind speeds greater than 3m/s. The results demonstrated that the received site noise levels at all monitoring locations satisfied the relevant noise criteria as per the PA_0193 and in accordance with the NMP for the East Guyong Quarry, had they applied. Location N2 was subject to noise enhancing meteorological conditions (ie source to receiver winds) and still satisfied relevant noise criteria. Therefore, it is concluded that noise levels from quarry operations would have satisfied the relevant criteria at all assessment locations identified in Condition 3(5) of PA_0193 if applicable meteorological conditions occurred at the time of measurement.

The blast overpressure and ground vibration monitoring results satisfied the relevant criteria at all monitoring locations for the five blast events that occurred since the previous quarterly noise monitoring.

Appendix A

Glossary of acoustic terms

A number of technical terms are required for the discussion of noise. These are explained in Table A.1.

Table A.1 Glossary of acoustic terms

Term	Description
dB	Noise is measured in units called decibels (dB).
A-weighting	There are several scales for describing noise, the most common being the 'A-weighted' scale. This is an adjustment made to sound-level measurement to approximate the response of the human ear.
C-weighting	This is an adjustment made to sound-level measurements which takes account of low-frequency components of noise within the audibility range of humans.
L _{A90}	Commonly referred to as the background noise level. The A-weighted noise level exceeded 90% of the time.
L _{Aeq}	The A-weighted, energy average noise from a source. This is the equivalent continuous sound pressure level over a given period. The L _{Aeq} (15-min) descriptor refers to an L _{Aeq} noise level measured over a 15-minute period.
L _{Amax}	The A-weighted maximum root mean squared sound pressure level received during a measuring interval.
Day period	Monday – Saturday: 7 am to 6 pm, on Sundays and Public Holidays: 8 am to 6 pm.
Evening period	Monday – Saturday: 6 pm to 10 pm, on Sundays and Public Holidays: 6 pm to 10 pm.
Night period	Monday – Saturday: 10 pm to 7 am, on Sundays and Public Holidays: 10 pm to 8 pm.
L _{peak}	The maximum instantaneous sound pressure during a measurement period or noise event.
PPV	The greatest instantaneous particle velocity during a given time interval.

It is useful to have an appreciation of decibels, the unit of noise measurement. Table A.2 gives an indication as to what an average person perceives about changes in noise levels:

Table A.2 Perceived change in noise

Change in sound level (dB)	Perceived change in noise
1 to 2	typically indiscernible
3	just perceptible
5	noticeable difference
10	twice (or half) as loud
15	large change
20	four times (or quarter) as loud

Examples of common noise levels are provided in Figure A.1.

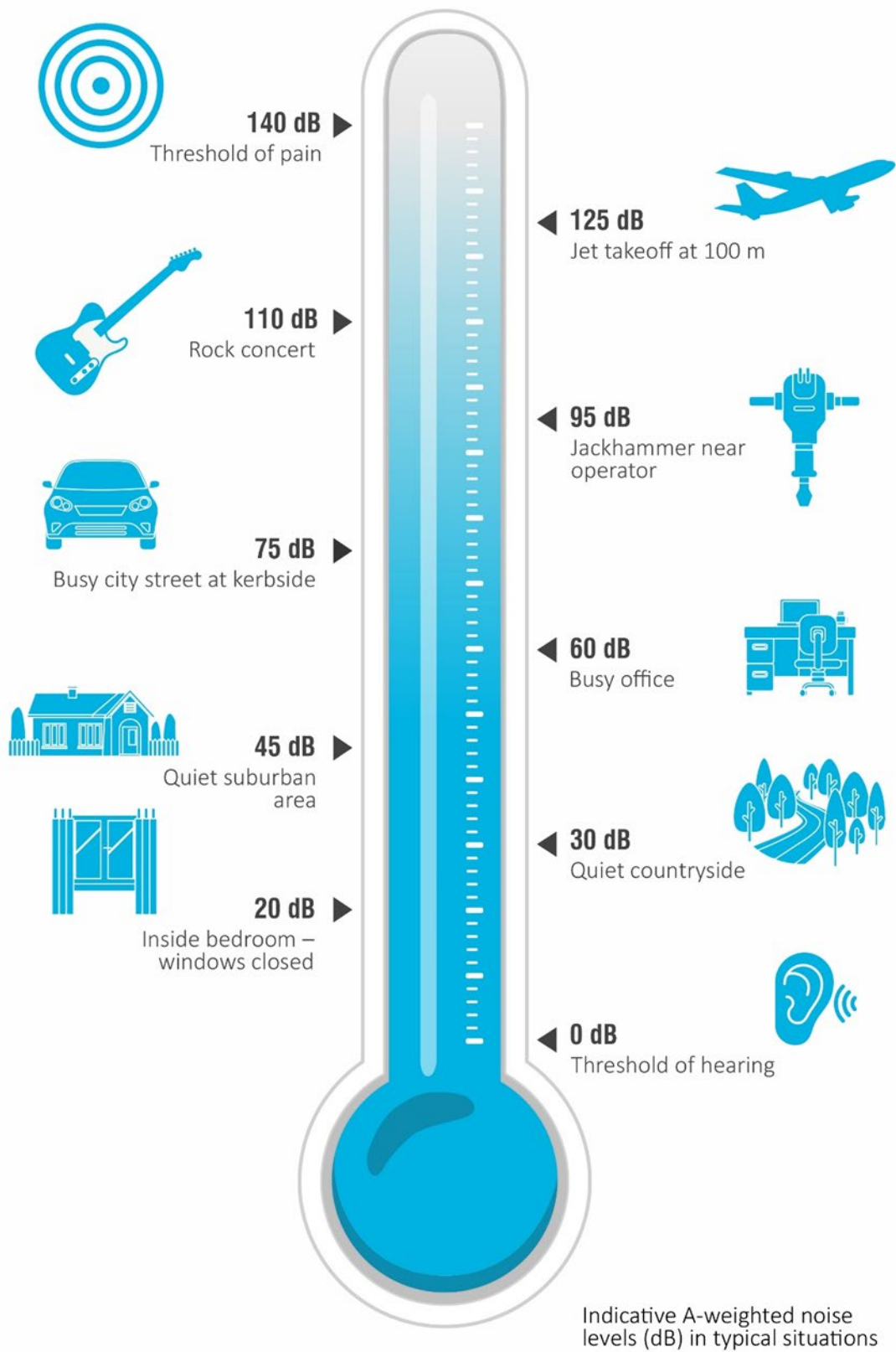


Figure A.1 Common noise levels

Appendix B

Calibration certifications

CERTIFICATE OF CALIBRATION

CERTIFICATE NO: SLM31670

EQUIPMENT TESTED: Sound Level Meter

Manufacturer: B & K
Type No: 2250
Mic. Type: 4189
Pre-Amp. Type: ZC0032

Serial No: 2759405
Serial No: 2983733
Serial No: 22666

Filter Type: 1/3 Octave
Test No: F031671

Owner: EMM Consulting
Level 3, 175 Scott Street
Newcastle, NSW 2300

Tests Performed: IEC 61672-3:2013 & IEC 61260-3:2016

Comments: All Test passed for Class 1. (See overleaf for details)

CONDITIONS OF TEST:

Ambient Pressure	992 hPa ± 1 hPa	Date of Receipt :	02/02/2022
Temperature	26 °C $\pm 1^\circ$ C	Date of Calibration :	02/02/2022
Relative Humidity	48 % $\pm 5\%$	Date of Issue :	03/02/2022

Acu-Vib Test Procedure: AVP10 (SLM) & AVP06 (Filters)

CHECKED BY:

AUTHORISED SIGNATURE:

Jack Kielt

Accredited for compliance with ISO/IEC 17025 - Calibration

Results of the tests, calibration and/or measurements included in this document are traceable to SI units through reference equipment that has been calibrated by the Australian National Measurement Institute or other NATA accredited laboratories demonstrating traceability.

This report applies only to the item identified in the report and may not be reproduced in part.

The uncertainties quoted are calculated in accordance with the methods of the ISO Guide to the Uncertainty of Measurement and quoted at a coverage factor of 2 with a confidence interval of approximately 95%.



**WORLD RECOGNISED
ACCREDITATION**

Accredited Lab No. 9262
Acoustic and Vibration
Measurements

Acu-Vib Electronics
CALIBRATIONS SALES RENTALS REPAIRS

Head Office & Calibration Laboratory
Unit 14, 22 Hudson Ave. Castle Hill NSW 2154
(02) 9680 8133
www.acu-vib.com.au

CERTIFICATE OF CALIBRATION

CERTIFICATE NO: C30591

EQUIPMENT TESTED : Sound Level Calibrator

Manufacturer: Svantek
Type No: SV-36 Serial No: 79952
Owner: EMM Consulting Pty Ltd
L3, 175 Scott Street
Newcastle, NSW 2300

Tests Performed: Measured Output Pressure level, Frequency & Distortion
Comments: See Details overleaf. All Test Passed.

Parameter	Pre-Adj	Adj Y/N	Output: (dB re 20 µPa)	Frequency (Hz)	THD&N (%)
Level1:	NA	N	94.12 dB	999.99 Hz	1.58 %
Level2:	NA	N	114.05 dB	999.99 Hz	1.12 %
Uncertainty			±0.11 dB	±0.05%	±0.20 %

Uncertainty (at 95% c.i.) k=2

CONDITION OF TEST:

Ambient Pressure 1007 hPa ±1 hPa Date of Receipt : 16/09/2021
Temperature 21 °C ±1° C Date of Calibration : 16/09/2021
Relative Humidity 43 % ±5% Date of Issue : 16/09/2021

Acu-Vib Test AVP02 (Calibrators)
Procedure: Test Method: AS IEC 60942 - 2017

CHECKED BY:

AUTHORISED SIGNATURE:

Wein Soc

Accredited for compliance with ISO/IEC 17025 - Calibration
Results of the tests, calibration and/or measurements included in this document are traceable to SI units through reference equipment that has been calibrated by the Australian National Measurement Institute or other NATA accredited laboratories demonstrating traceability.

This report applies only to the item identified in the report and may not be reproduced in part.
The uncertainties quoted are calculated in accordance with the methods of the ISO Guide to the Uncertainty of Measurement and quoted at a coverage factor of 2 with a confidence interval of approximately 95%.



WORLD RECOGNISED ACCREDITATION

Accredited Lab No. 9262
Acoustic and Vibration Measurements

Acu-Vib Electronics
CALIBRATIONS SALES RENTALS REPAIRS

Head Office & Calibration Laboratory
Unit 14, 22 Hudson Ave. Castle Hill NSW 2154
(02) 9680 8133
www.acu-vib.com.au

Australia

SYDNEY

Ground floor 20 Chandos Street
St Leonards NSW 2065
T 02 9493 9500

NEWCASTLE

Level 3 175 Scott Street
Newcastle NSW 2300
T 02 4907 4800

BRISBANE

Level 1 87 Wickham Terrace
Spring Hill QLD 4000
T 07 3648 1200

CANBERRA

Level 2 Suite 2.04
15 London Circuit
Canberra City ACT 2601

ADELAIDE

Level 4 74 Pirie Street
Adelaide SA 5000
T 08 8232 2253

MELBOURNE

Suite 8.03 Level 8 454 Collins
Street
Melbourne VIC 3000
T 03 9993 1900

PERTH

Suite 9.02 Level 9 109 St
Georges Terrace
Perth WA 6000

Canada

TORONTO

2345 Young Street Suite 300
Toronto ON M4P 2E5

VANCOUVER

60 W 6th Ave Suite 200
Vancouver BC V5Y 1K1



[linkedin.com/company/emm-consulting-pty-limited](https://www.linkedin.com/company/emm-consulting-pty-limited)



emmconsulting.com.au