



East Guyong Quarry

2023 Dust Deposition Monitoring

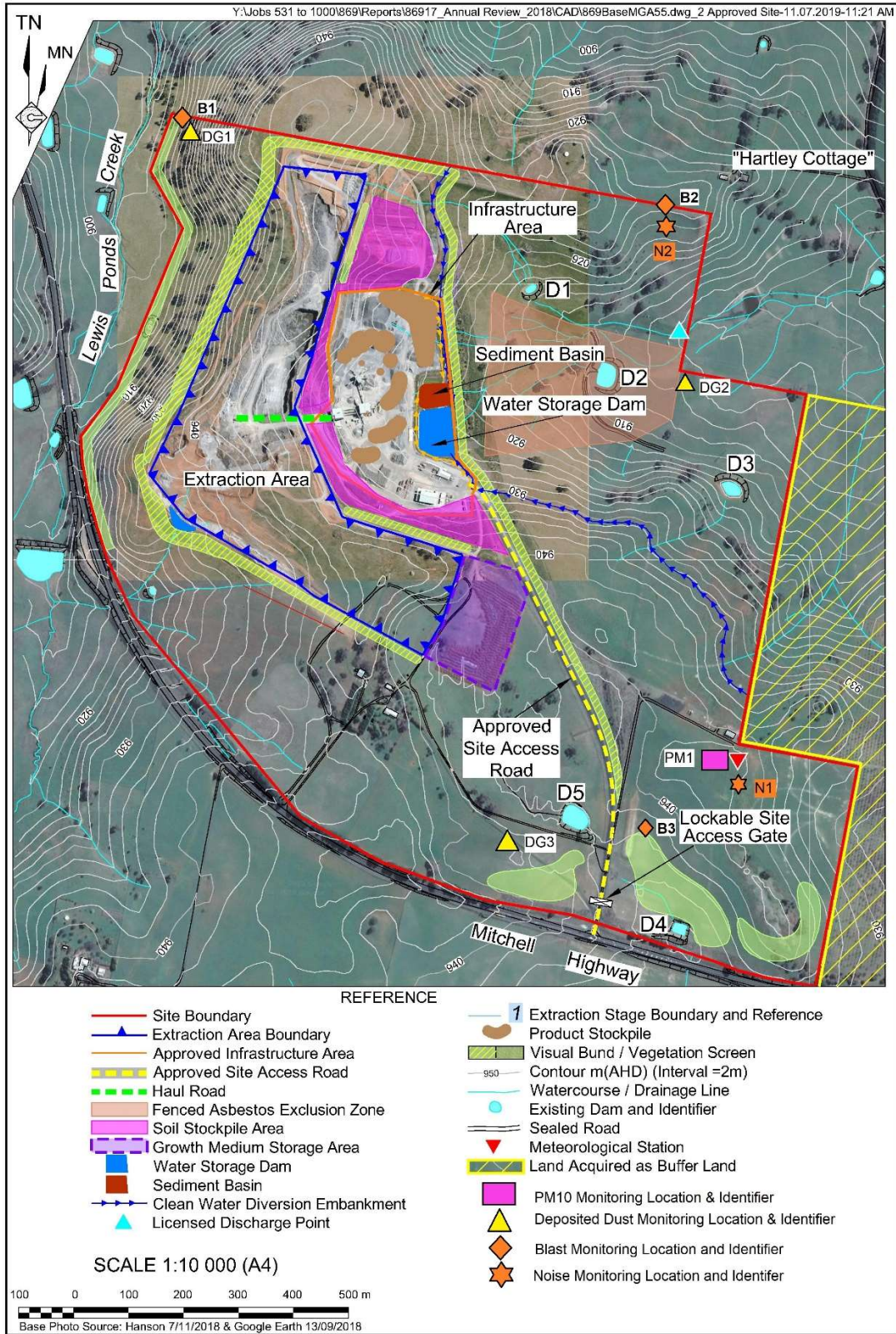


Figure 1: Monitoring locations – East Guyong Quarry ($g/m^2/month$) (2019)

Table 1: Monthly Total Insoluble Matter ($\text{g}/\text{m}^2/\text{month}$) measured for Dust Deposition Gauge 1 during 2023 and calculated rolling annual average Total Insoluble Matter ($\text{g}/\text{m}^2/\text{month}$).

Month and Year	Total Insoluble Matter	Rolling Annual Average	Comments
January 2023	0.4	0.51	
February 2023	1.2	0.54	
March 2023	0.6	0.58	
April 2023	0.5	0.62	
May 2023	0.2	0.46	
June 2023			
July 2023			
August 2023			
September 2023			
October 2023			
November 2023			
December 2023			

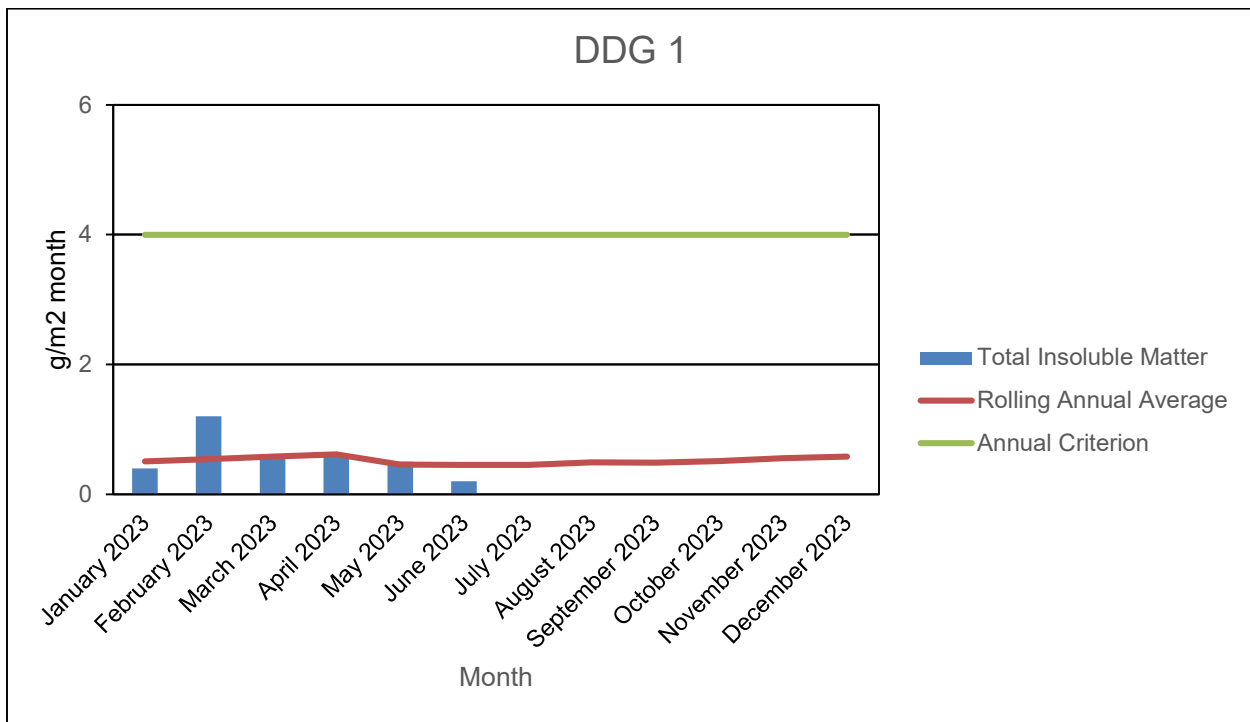


Figure 2: Total Insoluble Matter, rolling annual average, and annual criterion ($\text{g}/\text{m}^2/\text{month}$) for the East Guyong Quarry as measured at DDG-1 during 2023.

Table 2: Monthly Total Insoluble Matter (g/m² month) measured for Dust Deposition Gauge 2 during 2023 and calculated rolling annual average Total Insoluble Matter (g/m² month).

Month and Year	Total Insoluble Matter	Rolling Annual Average	Comments
January 2023	5.6	9.43	Ongoing organic contamination of DDG2
February 2023	8.6	3.33	Ongoing organic contamination of DDG2
March 2023	1.2	3.03	
April 2023	6.7	3.50	Ongoing organic contamination of DDG2
May 2023	1.6	3.55	
June 2023	6		Ongoing organic contamination of DDG2
July 2023			
August 2023			
September 2023			
October 2023			
November 2023			
December 2023			

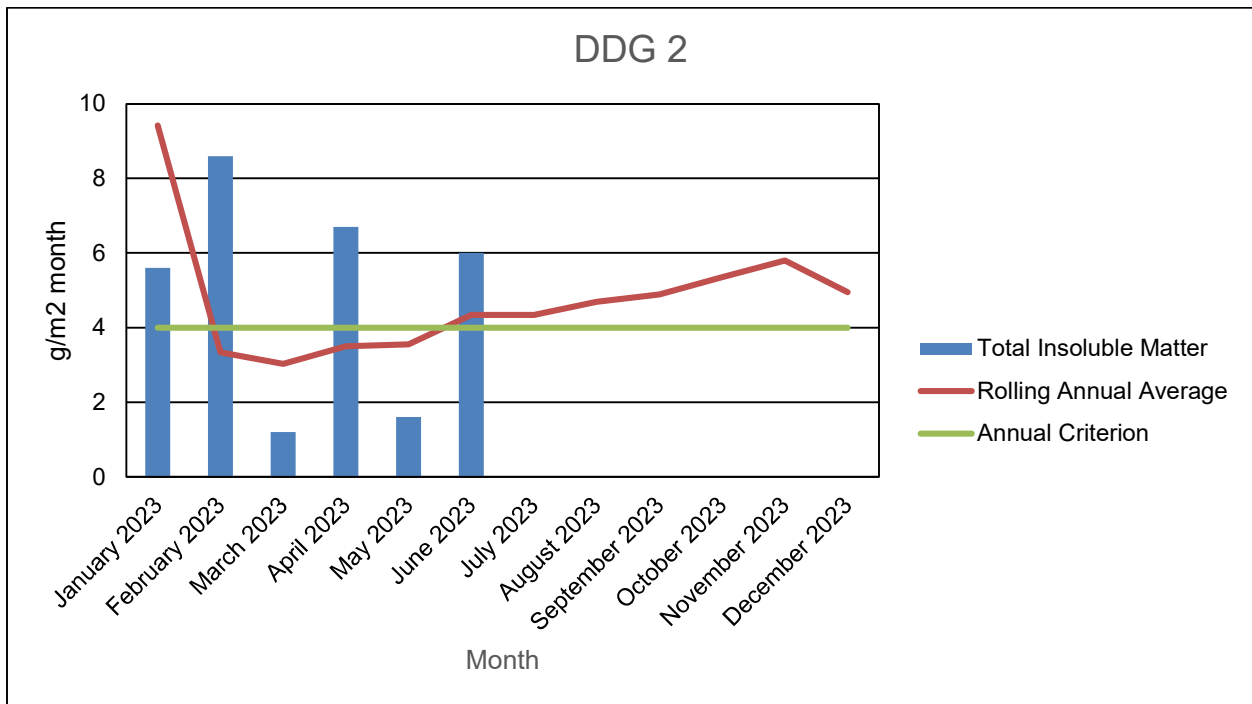


Figure 3: Total Insoluble Matter, rolling annual average, and annual criterion (g/m²/month) for the East Guyong Quarry as measured at DDG-2 during 2023.

Table 3: Monthly Total Insoluble Matter ($\text{g/m}^2/\text{month}$) measured for Dust Deposition Gauge 3 during 2023 and calculated rolling annual average Total Insoluble Matter ($\text{g/m}^2/\text{month}$).

Month and Year	Total Insoluble Matter	Rolling Annual Average	Comments
January 2023	0.8	2.60	
February 2023	3.3	2.63	
March 2023	2.5	2.78	
April 2023	1.3	2.82	
May 2023	0.8	2.75	
June 2023	0.2	2.86	
July 2023			
August 2023			
September 2023			
October 2023			
November 2023			
December 2023			

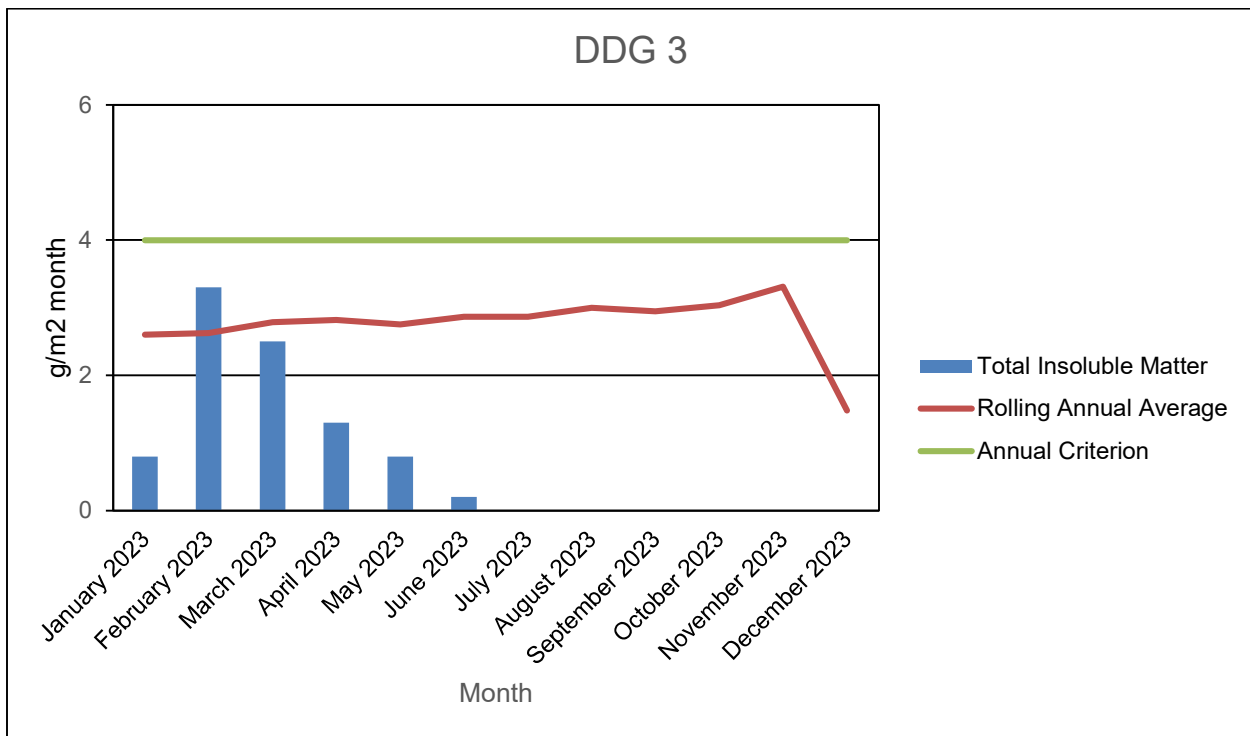


Figure 4: Total Insoluble Matter, rolling annual average, and annual criterion ($\text{g/m}^2/\text{month}$) for the East Guyong Quarry as measured at DDG-3 during 2023.

Table 4: Monthly Total Insoluble Matter ($\text{g}/\text{m}^2/\text{month}$) measured for Dust Deposition Gauge 4 during 2023 and calculated rolling annual average Total Insoluble Matter ($\text{g}/\text{m}^2/\text{month}$).

Month and Year	Total Insoluble Matter	Rolling Annual Average	Comments
January 2023	0.8	1.50	
February 2023	2.3	1.48	
March 2023	1.6	1.54	
April 2023	3.7	1.82	
May 2023	1.4	1.86	
June 2023	0.3	1.65	
July 2023			
August 2023			
September 2023			
October 2023			
November 2023			
December 2023			

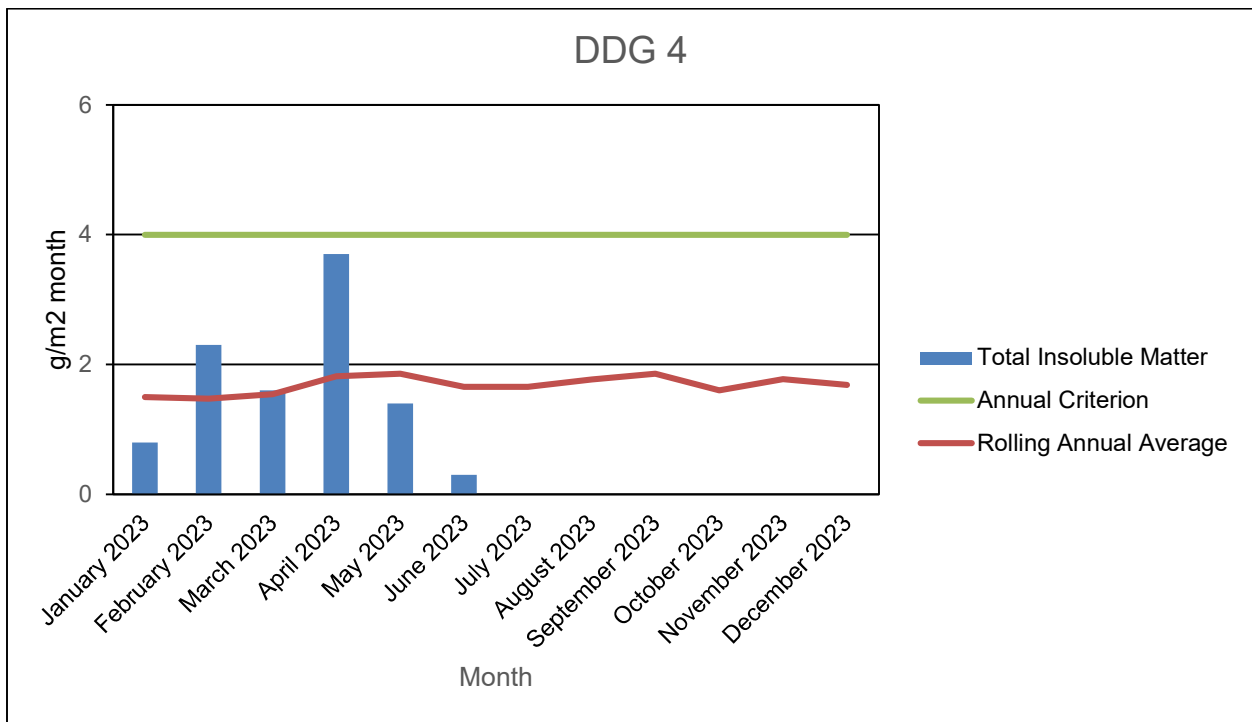


Figure 5: Total Insoluble Matter, rolling annual average, and annual criterion ($\text{g}/\text{m}^2/\text{month}$) for the East Guyong Quarry as measured at DDG-4 during 2023.