



East Guyong Quarry

2022 Dust Deposition Monitoring

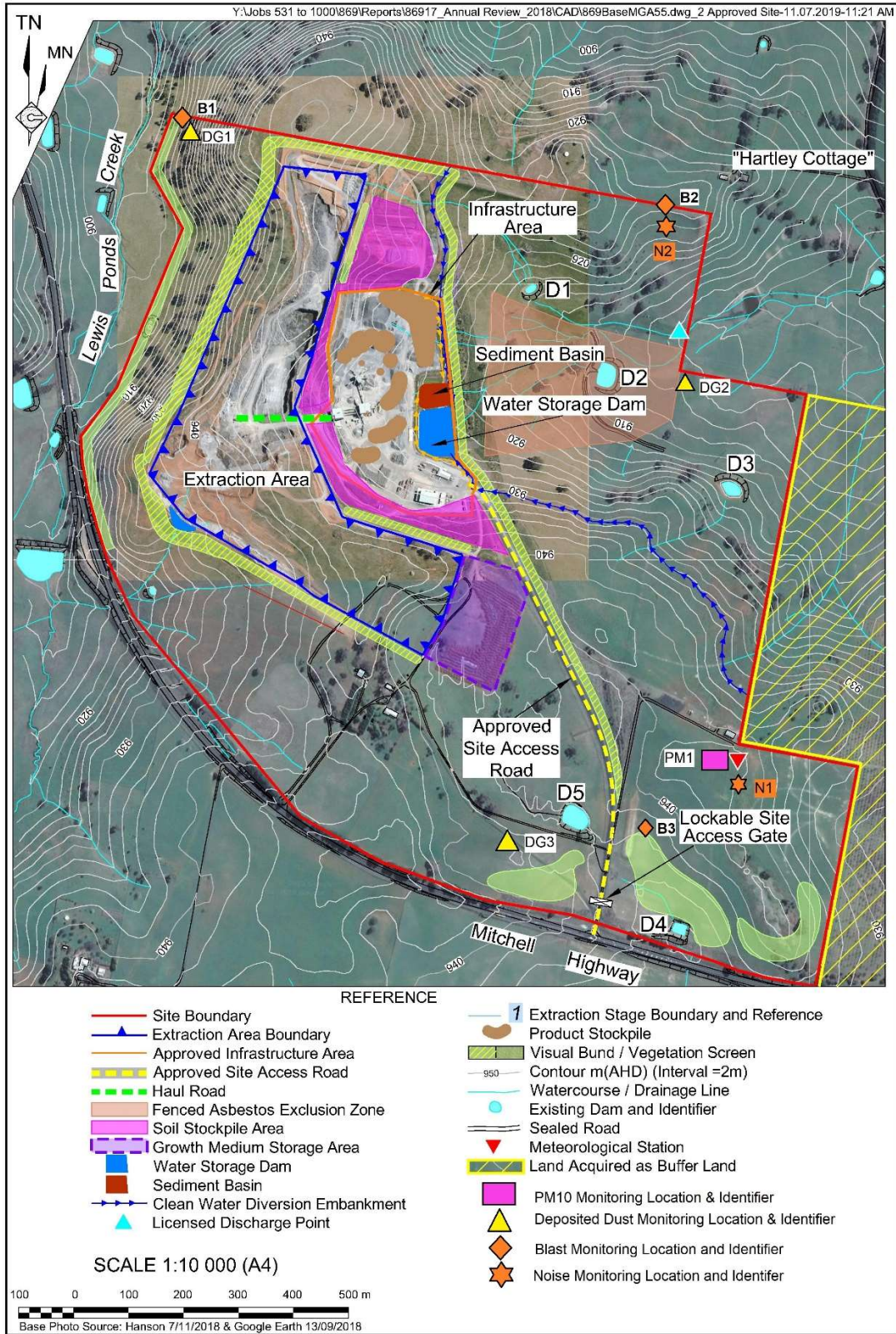


Figure 1: Monitoring locations – East Guyong Quarry ($g/m^2/month$) (2019)

Table 1: Monthly Total Insoluble Matter ($\text{g}/\text{m}^2/\text{month}$) measured for Dust Deposition Gauge 1 during 2021 and calculated rolling annual average Total Insoluble Matter ($\text{g}/\text{m}^2/\text{month}$).

Month and Year	Total Insoluble Matter	Rolling Annual Average	Comments
January 2022	2.2	0.88	
February 2022	0.8	0.91	
March 2022	0.1	0.86	
April 2022	0.2	0.82	
May 2022	2.4	1.00	
June 2022	0.5	1.06	
July 2022	0.2	0.99	
August 2022	0.1	0.96	
September 2022	0.5	0.98	
October 2022	0.3	0.89	
November 2022	0.2	0.74	
December 2022	0.4	0.66	

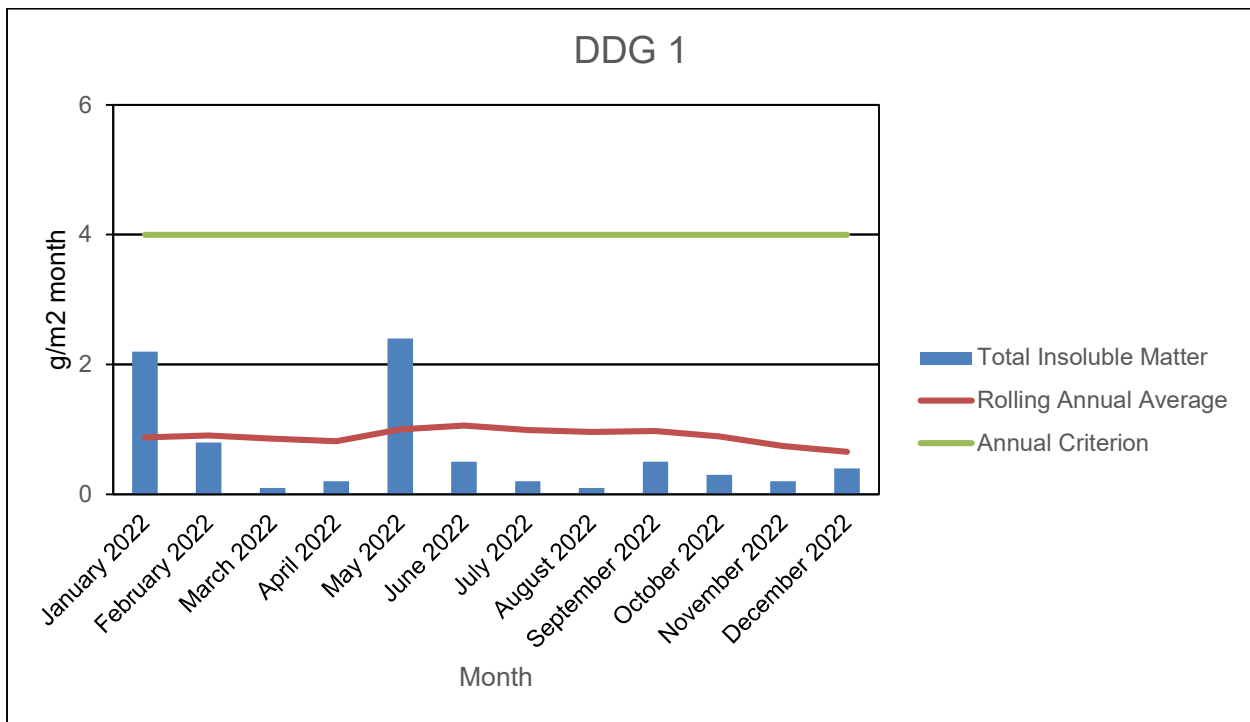


Figure 2: Total Insoluble Matter, rolling annual average, and annual criterion ($\text{g}/\text{m}^2/\text{month}$) for the East Guyong Quarry as measured at DDG-1 during 2022.

Table 2: Monthly Total Insoluble Matter (g/m^2 month) measured for Dust Deposition Gauge 2 during 2021 and calculated rolling annual average Total Insoluble Matter (g/m^2 month).

Month and Year	Total Insoluble Matter	Rolling Annual Average	Comments
January 2022	69.7	16.47	Ongoing organic contamination of DDG2
February 2022	81.7	22.47	Ongoing organic contamination of DDG2
March 2022	4.8	22.58	
April 2022	1.1	21.57	
May 2022	1	20.46	
June 2022	0.2	20.17	
July 2022	0.7	18.55	
August 2022	0.8	17.18	
September 2022	2.9	17.17	
October 2022	1.2	16.51	
November 2022	2.2	16.45	
December 2022	10.9	14.77	

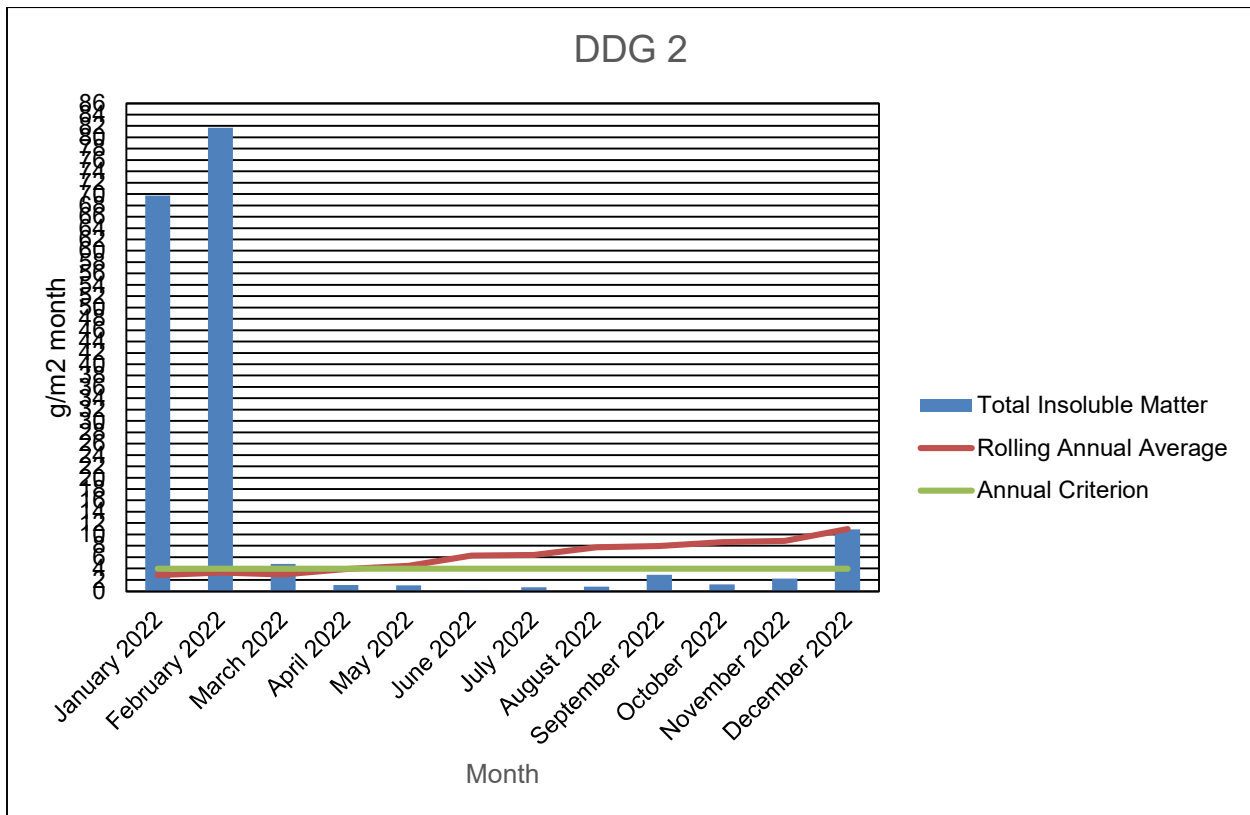


Figure 3: Total Insoluble Matter, rolling annual average, and annual criterion ($\text{g}/\text{m}^2/\text{month}$) for the East Guyong Quarry as measured at DDG-2 during 2022.

Table 3: Monthly Total Insoluble Matter ($\text{g}/\text{m}^2/\text{month}$) measured for Dust Deposition Gauge 3 during 2021 and calculated rolling annual average Total Insoluble Matter ($\text{g}/\text{m}^2/\text{month}$).

Month and Year	Total Insoluble Matter	Rolling Annual Average	Comments
January 2022	3.6	2.45	
February 2022	3	2.66	
March 2022	0.6	2.60	
April 2022	0.9	2.60	
May 2022	1.6	2.64	
June 2022	0.3	2.70	
July 2022	1.4	2.59	
August 2022	1.5	2.57	
September 2022	3.5	2.80	
October 2022	2.2	2.56	
November 2022	1.1	2.17	
December 2022	14.3	2.83	

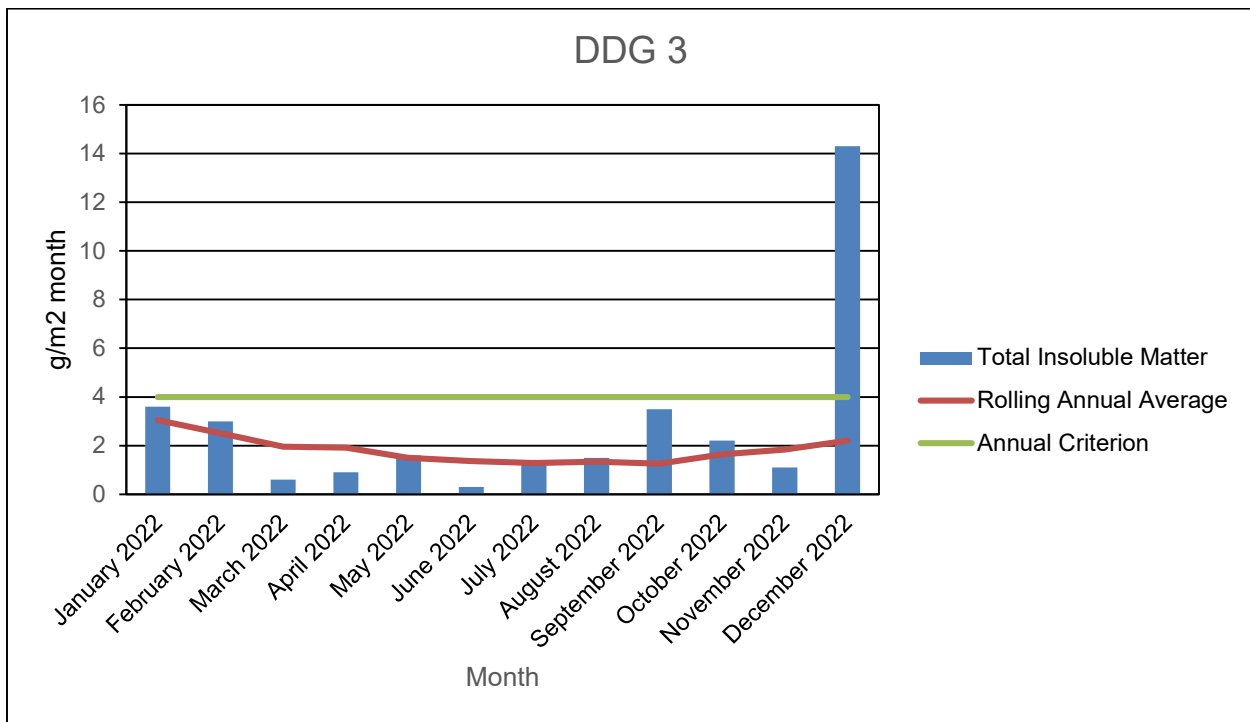


Figure 4: Total Insoluble Matter, rolling annual average, and annual criterion ($\text{g}/\text{m}^2/\text{month}$) for the East Guyong Quarry as measured at DDG-3 during 2022.

Table 4: Monthly Total Insoluble Matter ($\text{g}/\text{m}^2/\text{month}$) measured for Dust Deposition Gauge 4 during 2021 and calculated rolling annual average Total Insoluble Matter ($\text{g}/\text{m}^2/\text{month}$).

Month and Year	Total Insoluble Matter	Rolling Annual Average	Comments
January 2022	9.3	1.9	Ongoing organic contamination of DDG2
February 2022	2.6	1.8	
March 2022	0.8	1.7	
April 2022	0.4	1.7	
May 2022	0.9	1.7	
June 2022	0.4	1.8	
July 2022	4	2.0	
August 2022	0.5	1.9	
September 2022	1	2.0	
October 2022	3.9	2.2	
November 2022	0.4	2.0	
December 2022	2.3	2.2	

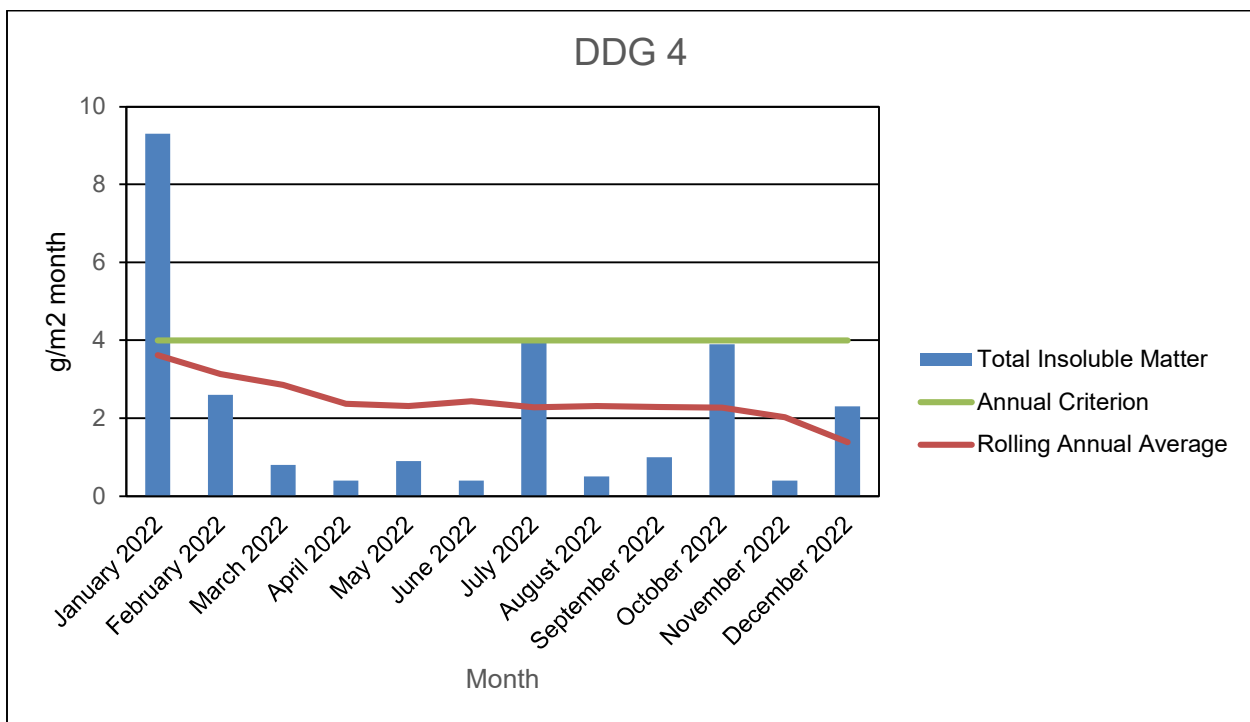


Figure 5: Total Insoluble Matter, rolling annual average, and annual criterion ($\text{g}/\text{m}^2/\text{month}$) for the East Guyong Quarry as measured at DDG-4 during 2022.