

**Wollert Stakeholder Reference Group
MEETING NOTES**

Meeting No.:	01		
Date:	18 May 2022	Time:	12.00pm
Location:	Wollert Community Hall, 525 Epping Road, Wollert		
Meeting Notes Confirmed for upload to website:	N/a		
Chairman:	Griff Davis (GD)		
Present:	<p><u>Community Members:</u> Hamish McDonell (HM), facility neighbour, Melbourne Arboretum Maggie McDonell (MM), facility neighbour, Melbourne Arboretum Bud Wijesinghe (BW), Wollert resident</p> <p><u>Community Organisations:</u> Viktor Faulkner (VF), Whittlesea Community Farm</p> <p><u>City of Whittlesea:</u> Simone Chetwynd-Brown (SCB), Unit Manager Resource Recovery Amanda Dodd (AD), Manager Sustainable Environment</p> <p><u>EPA Victoria:</u> Sanela Rikalo (SR), Senior Engagement Lead, North Metropolitan Region</p> <p><u>Hanson:</u> Daniel Fyfe (DF), Land and Mineral Reserves Manager Drew Heath (DH), Wollert Quarry Manager</p> <p><u>Secretariat:</u> Lyndel Hunter (LH), LH Strategic Communication</p>		

Item	
1	<p>Welcome</p> <p>LH advised that Hanson had undertaken two Community Reference Group (CRG) development programs, the first in 2018 and the most recent conducted during April 2022. Neither program had received much response from the community. The most recent program resulted in three community members expressing their interest to participate in a CRG, an insufficient number to conduct a CRG under the proposed Terms of Reference.</p> <p>However, in light of future plans for the waste and resource recovery sector of the Wollert site, Hanson wanted to ensure development of engagement with the community, community organisations and the relevant regulatory authorities.</p>

	<p>Consequently, Hanson opted to develop a Stakeholder Reference Group (SRG) and invited the three applicants to the CRG to participate, as well as two community organisations and representatives of City of Whittlesea Council, Earth Resources Regulation and EPA Victoria.</p> <p>While not operating under the promoted Terms of Reference, all meetings will be conducted according to the Code of Conduct established for the CRG meetings, and the Chairman, Mr Griff Davis, appointed by Hanson to conduct the CRG has agreed to fulfil the role of Chairman of the SRG. As a consultant, LH will continue her role as Secretariat.</p> <p>LH then handed meeting to Chairman, Griff Davis.</p>
<p>2</p>	<p>Introduction of Chairman</p> <p><u>Acknowledgement of Country</u></p> <p>Our meeting is being held on the lands of the Wurundjeri people and I wish to acknowledge them as Traditional Owners. I would also like to pay my respects to their Elders, past and present, and Aboriginal Elders of other communities who may be here today.</p> <p><u>Personal Introduction:</u></p> <p>GD outlined his background including 21 years at City of Whittlesea Council as Director Advocacy and Communications and Manager of Local Laws and Transportation. During this time, due to staff rotations and leave, GD fulfilled many other Acting Director roles within the Council in a wide range of departments, including Planning.</p> <p>GD also advised that his expectations of Chairman of the SRG is to ensure everyone is heard and that information provided at the meetings is as accessible to the community as possible.</p> <p>GD advised that all SRG meetings would be conducted according to the Code of Conduct.</p> <p>AD queried whether SRG would ever be developed into a CRG. LH advised that this is absolutely Hanson’s preference and that more community members attending the meetings would be very welcome.</p> <p>GD advised that <u>apologies</u> had been received from:</p> <ul style="list-style-type: none"> · Paras Christou, Mernda Community House · Peter Gross, Wollert resident
<p>3</p>	<p>Introduction of Attendees</p> <p>GD invited all attendees to introduce themselves and provide an outline of their expectations of their participation in the group.</p> <p>Daniel Fyfe – Land and Mineral Reserves Manager for Hanson, wants to make sure all stakeholders have the information they require.</p> <p>Bud Wijesinghe – a resident of Wollert. An engineer from Sri Lanka and wants to understand what is being undertaken at the site.</p> <p>Sanela Rikalo - Senior Engagement Lead, North Metropolitan Region, EPA Victoria. Wants to obtain information about the site and community’s perception of the site. Also wants to be able to inform community of the new EP Act.</p> <p>Simone Chetwynd-Brown, Unit Manager Resource Recovery, City of Whittlesea. Wants to obtain information about the site and inform the community of Council resource recovery initiatives.</p> <p>Amanda Dodd, Manager Sustainable Environment, City of Whittlesea. Wants to gain a better understanding of the site and hear from the community re their needs.</p>

	<p>Maggie and Hamish McDonell – facility neighbours and owners of Melbourne Arboretum. Wants to thank Hanson for being a good neighbour with a relationship that works well. Seeking to establish a similar relationship in the future. Our farm is the last in the area and our goal is to create a place (etum) for trees (arbor). Being an international company, Hanson has a lot to offer and this is a good opportunity to educate the community re recycling. We are excited about the project.</p> <p>Viktor Faulkner, Coordinator of Whittlesea Community Farm, an initiative of Whittlesea Community Connections. The initiative has relationships with Yarra Valley Water which provides the land, and Melbourne Polytechnic. Participation in this group will be an important conduit to the community.</p> <p>Drew Heath, Wollert Quarry Manager, Hanson. Wants to provide information regarding the site and answer all stakeholder questions.</p>
<p>4</p>	<p>Quarry facility briefing <i>Drew Heath, Quarry Manager Wollert, Hanson</i> <i>(Refer to ATTACHMENT A)</i></p> <p>DH provided Hanson – Wollert Quarry presentation outlining information relevant to Hanson Australia and its parent Company HeidelbergCement, what is quarrying, Wollert quarry site description, and operational compliance. A video produced by the industry association, Cement Concrete Aggregates Australia was also shown. It can viewed at: https://www.ccaa.com.au/CCAA/Industry/Quarry/CCAA/Public_Content/Quarries/Quarry_Overview.aspx?hkey=3e03adf1-686b-4a2c-bdf2-ac6e74ac3220</p> <p>During and subsequent to the presentation, the following was queried and discussed: VF queried the site size and how long the quarry has existed. DF advised that the total site area was 350ha. MM advised that the quarry had been there since the 1960s.</p> <p>DH advised that current focus is to be out of the South Pit in the next six to seven years, as the proposed E6 Freeway will commence construction about then and Hanson needs to have commenced rehabilitation of the area by then.</p> <p>SR advised that in the case of the quarry, Earth Resources Regulation (ERR) is the lead regulatory agency and, in the case of the landfill and waste management facilities, EPA Victoria is the lead regulatory authority.</p> <p>LH advised that, although this is true, the approvals processes for Planning Permits, Work Plan applications and variations to these documents, requires all three agencies (ERR, EPA and City of Whittlesea) to participate in each of the processes and provide their approval. Therefore, Hanson views all regulatory authorities equally.</p> <p>DH offered his thanks to all attendees for taking the time to participate in this first meeting and for the opportunity to grow the group.</p>
<p>5</p>	<p>Overall site and waste management facility briefing <i>Daniel Fyfe, Land and Mineral Reserves Manager, Hanson</i> <i>(refer to ATTACHMENT B)</i></p> <p>DF provided Wollert Renewable Energy Landfill presentation outlining information relevant to Hanson and what it does at the site, what the current projects are including the proposed Resource Park Wollert, a Planning Scheme Amendment, the Bridge Inn Road Intersection Upgrade, the Residential Transfer Station, the plan for perimeter bund planting and the positioning of the landfill to meeting the requirements of the circular economy.</p>

	<p>During the presentation, DF noted the following:</p> <ul style="list-style-type: none"> · The landfill and waste management facilities are highly regulated by EPA. Under the new law, Hanson must advise EPA when noncompliant. Hanson takes compliance seriously. · Australia has had cheap landfill, therefore resource recovery has been difficult. However no more landfills are going to be permitted, and the landfill levy rises to \$125.90 per tonne from 1 July 2022. Approximately \$60 million in levy fees is collected annually and paid to EPA. Consequently, the value of landfill sites has increased. · This is an opportunity for Hanson to develop a Resource Park on the site. · There will be no landfill in the South Pit, although cleanfill may be required for rehabilitation. · Hanson is working with VicRoads to upgrade the Bridge Inn Road entrance to the facility. · Hanson proposes to develop a ‘Tip’ shop allowing the pick-up and drop off of waste. DF has already spoken with Outlook Environmental, a group that offers employment for people with disabilities, and one which he has undertaken a similar enterprise at Hampton Park Landfill. · The opportunity to develop a Resource Park requires Planning Zone Amendment. The area is currently zoned Green Wedge which means no resource recovery is allowed. Hanson will be applying to City of Whittlesea Council for a Planning Scheme Amendment to a Special Use Zone – Resource Recovery. · The Resource Park may also include a waste to energy facility, however that facility would require its own Planning Permit and Works Approval. · Hanson is currently working on the planting of bunds around the site to reduce impacts to any visual and noise amenity. Working with Melbourne Arboretum to plant out the eastern boundary. · Hanson recognises its need to work with the community. The thoughts of the community need to be understood so that Hanson is not guessing. <p>MM queried that as 600,000 tonnes per annum are being sent to landfill now, what is expected to be sent to landfill following the development of the Resource Park? DF advised that a lot less would be sent to landfill due to the process recovery being undertaken.</p>
<p>6</p>	<p>Discussion: Future meetings</p> <p>Following discussion, it was agreed that future meetings should be set to encourage greater community participation. Therefore, the preferences are for meetings to be conducted:</p> <ul style="list-style-type: none"> · Three to four times per annum · On a Wednesday · From 6.00pm to encourage greater community participation (this will include a light meal) · At Whittlesea Community Hall. LH explained that the City of Whittlesea only books their community venues in six month blocks, each commencing 1 January and 1 July. Therefore, date confirmation will be unable to made until after 1 July 2022.

<p>Meeting Closed:</p>	<p>GD affirmed that the Meeting Notes and presentations would be distributed via email to all attendees and uploaded to the Hanson website at https://www.hanson.com.au/about-us/regulatory-information/hanson-wollert/</p> <p>GD thanked all attendees and encouraged circulation of the meeting notes and presentations to other community members and organisations.</p> <p>The meeting closed at 1.40pm.</p>
-------------------------------	--

Next Meeting:	Time, date and venue to be confirmed Preferences: a Wednesday evening in August at the Wollert Community Hall
----------------------	--

ACTION TRACKER

No actions were specified during Meeting #1.

Item	Issue	Action	By



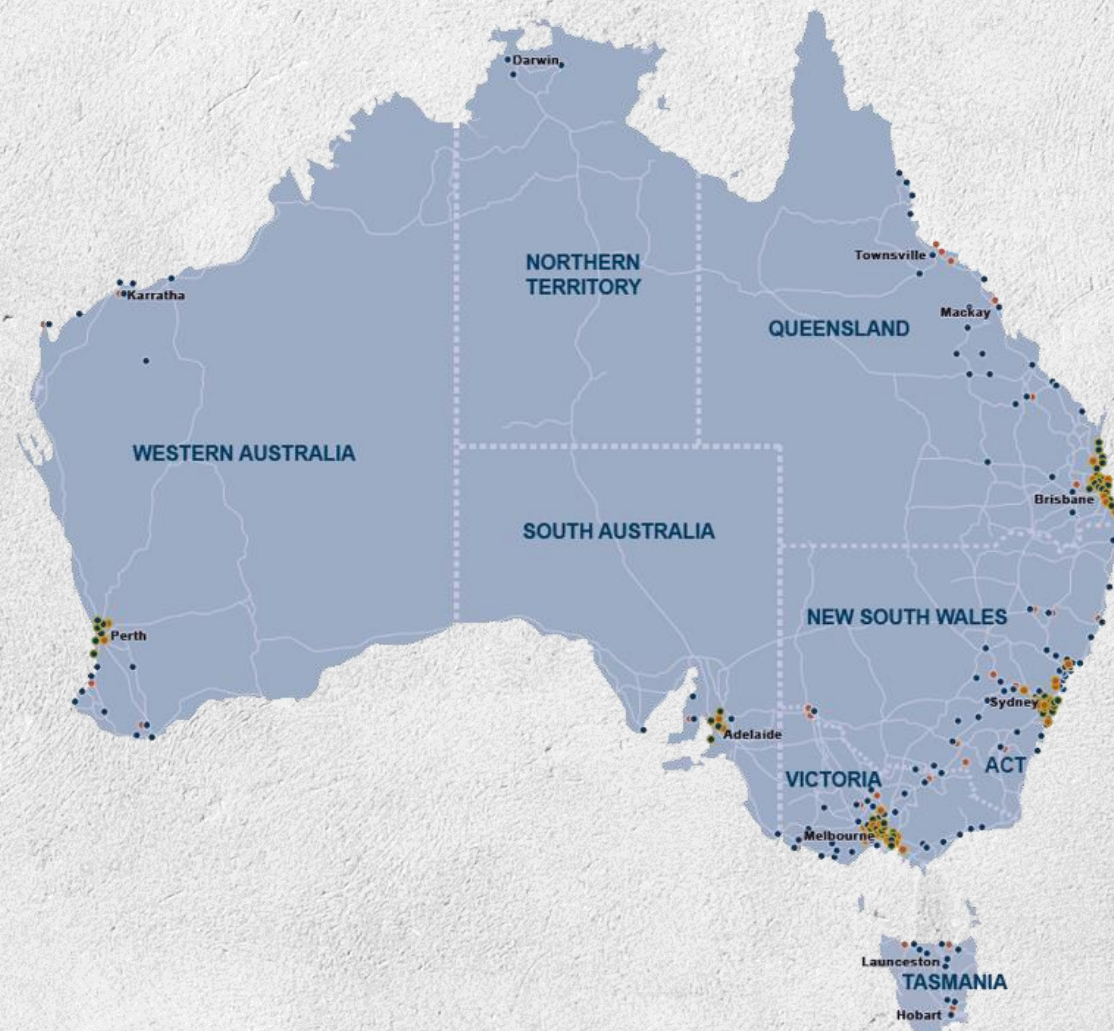
Hanson – Wollert Quarry

About Us

Hanson is a leader in building and construction materials with an extensive production and logistics network across Australia.

We use world-class technologies and service platforms to supply a comprehensive range of high-quality concrete, aggregates and sand. We also produce road base, asphalt and sustainable and recycled construction materials for civil construction and infrastructure projects. Hanson is part of the HeidelbergCement Group, which employs over 59,000 people across five continents. HeidelbergCement is a global leader in aggregates and has leading positions in cement, concrete and heavy building products





Legend

- Country Concrete
- Metro Concrete
- Country Quarry
- Metro Quarry



**BROAD
GEOGRAPHICAL
FOOTPRINT**





Employees



3159



1500



1



63



204



3

Trucks

Including
400 LODs

Landfill
site

**STRONG
PROFITABLE
BUSINESS
AND A BROAD
GEOGRAPHICAL
FOOTPRINT**

Quarries
recycling

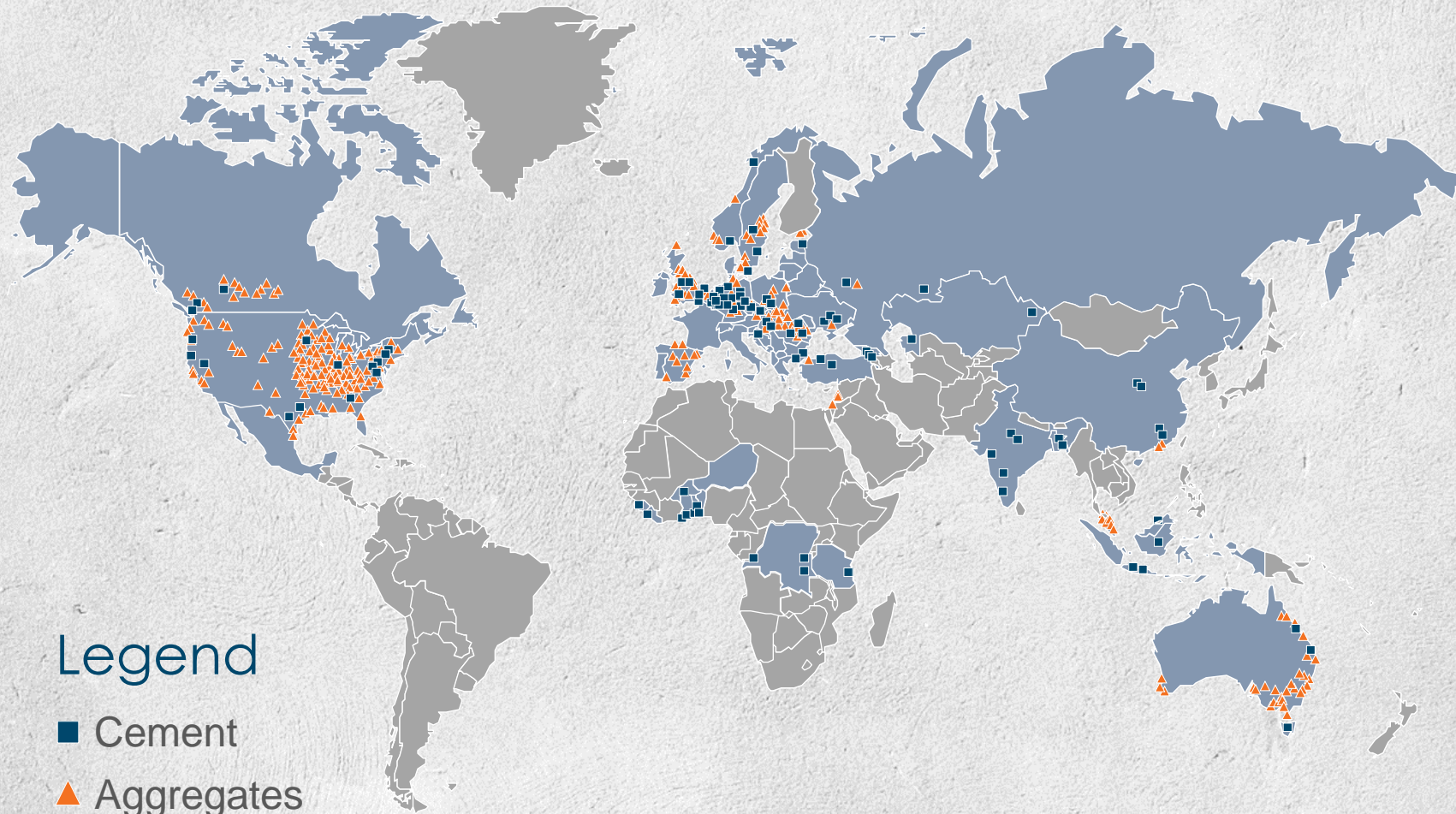
Concrete
plant

Asphalt
facilities





**WE'RE ALSO
GLOBAL...**



Legend

- Cement
- ▲ Aggregates

Hanson is part of the HeidelbergCement Group which:



40

Operates in more than 40 countries



59,000

Employs 59,000 people at 2,500 locations



1st

Largest aggregate producer in the world



3rd

Third largest cement producer in the world



3rd

Third largest concrete producer in the world



WE'RE ALSO GLOBAL...

WHAT IS QUARRYING?



Quarrying is quite simply the extraction of natural resources from the earth, usually from some form of surface working or quarry site.

Quarries produce a range of useful materials, including limestone, dimension stone and rock. In Australia, the most common materials extracted are construction aggregates such as crushed rock, sand or gravel.

These abundant yet essential raw materials are the foundation of our homes, schools, hospitals, roads and almost all aspects of the built environment that we depend on.

People have relied on quarry materials for thousands of years because of their strength, durability and dependability, and while the technology and processes have improved, these materials are as important to modern society today as they have ever been.

[Quarry Overview \(ccaa.com.au\)](http://ccaa.com.au)

HOW QUARRIES

BENEFIT AUSTRALIA

Australian quarries support our vital building and construction industries which generate over \$160 billion in revenue each year and directly employ more than one million Australians.

The building and construction industry demands more than 150 million tonnes of construction aggregates each year to meet the need for our homes, workplaces, public buildings and roads.

As well as providing these essential materials, quarries stimulate local communities through investment and by providing jobs. In fact, the quarry industry creates over 10,000 jobs directly and supports another 80,000 indirectly, often in rural and regional locations.



WHERE WE LIVE

To build an average new house we use about **110 tonnes** of construction aggregates and 53m³ of concrete.



THE ROADS WE USE

To build one kilometre of two-lane highway requires about **14,000 tonnes** (or 400 truckloads) of construction aggregates.



BUILDING AUSTRALIA

Quarry products are the essential raw materials needed to build new infrastructure projects. Over **150 million tonnes** of aggregates are used in the construction of homes, commercial buildings, schools, hospitals, roads and bridges every year.



LOCALLY SOURCED

Quarrying needs to be carried out close to where these materials will be used. This keeps transportation costs low and helps **keep building costs down** in local communities.



COMMUNITY FIRST

The quarry industry is committed to **co-exist with local communities** and follows stringent planning and operating conditions.

Wollert Quarry - About Us

- Wollert Quarry employs 23 Full Time Hanson personnel plus 9 Full Time Contractors
- The approved reserve produces ~2Mt of aggregates annually
- These materials are predominately
 - Road base material;
 - Concrete Aggregates; and
 - Manufactured Sands
- Supply for Residential developments, the Civil and Engineering sector & Concrete Manufacturing



6 INTERESTING FACTS ABOUT QUARRYING

ATTACHMENT A



PRODUCTS

Every Australian requires 8 tonnes of stone, sand and gravel every year to build the roads, houses and other infrastructure we need.



WHERE WE LIVE

To build an average new house we use about 110 tonnes of construction aggregates and 53m³ of concrete.



THE ROADS WE USE

To build one kilometre of two-lane highway requires about 14,000 tonnes (or 400 truckloads) of construction aggregates.



BUILDING AUSTRALIA

Quarry products are essential raw materials needed to build new infrastructure projects. Over 200 million tonnes of aggregates are used in the construction of homes, workplaces, public buildings and roads every year.



LOCALLY SOURCED

Quarrying needs to be carried out close to where these materials will be used. This keeps transportation costs low and helps keep building costs down in local communities.



COMMUNITY FIRST

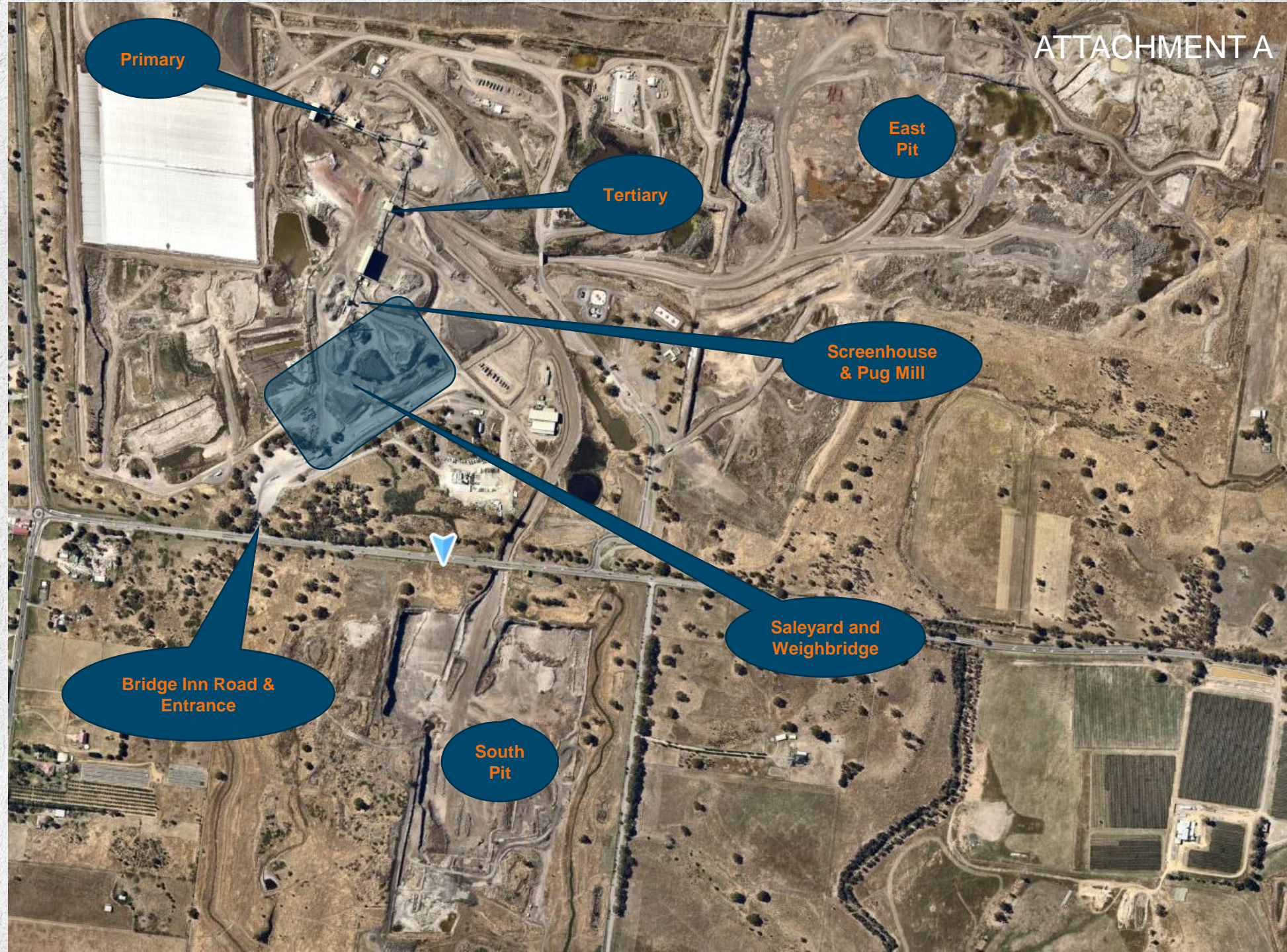
The quarry industry is committed to co-exist with local communities and follows stringent planning and operating conditions.



Hanson
HEIDELBERGCEMENT Group

Wollert Quarry Site Map

- Large Quarry Site
- 2 Extraction Pits
- South Pit
- East Pit
- Large Primary Crushing Station
- Tertiary Crushing Station
- Screen house & Pug Mill to produce final products
- Sales yard and weighbridge





Operational Compliance

- The extractive industry is heavily governed and quarries are required to comply across a wide range of levels.
- Governing bodies include but are not limited to:
 - Local Council
 - ERR (Earth Resources Regulation Victoria)
 - EPA (Environment Protection Authority)
 - Work Safe Victoria
- Local Community, Committed to co-exist. Working with the above organisations and meeting our legal requirements is of the highest importance.
- Strong community relationships are important to Hanson. The value of community engagement is recognised therefore the Stakeholder Reference Group is important to us.



Questions ?

Andrew Ritchie
Supply Chain Manager Aggregates SR
M: 0418 770 270
E: andrew.Ritchie@hanson.com.au

Drew Heath
Wollert Quarry Manager
M: 0408 521 035
E: drew.heath@hanson.com.au



Wollert Renewable Energy Landfill



HeidelbergCement, the parent company of Hanson Australia, has been operating for more than 150 years, and now has more than 59,000 employees across five continents.

Hanson has access to the best innovative technology, developed and delivered by some of the best people in the world.



Hanson's commitment to an end-to-end approach to sustainability utilises closed quarries as resource recovery facilities and renewable energy landfills.

This delivers full cycle management, optimises land use and benefits the local community.

Key Facts about the facility:

- Located at 55 Bridge Inn Road, Wollert within the North Ward of the City of Whittlesea
- It has an EPA Licence (OL000012309) to accept waste from homes, councils, commercial and industrial premises. The landfill was first permitted in 1995, with 365 hectares permitted to accept waste.
- The Transfer Station recovers a range of objects and materials, including garden waste
- Low-level contaminated soil and asbestos from households are accepted under strict conditions
- The facility accepts some Category C Reportable Priority Wastes



- The landfill is a state significant disposal site for Councils in the northern metropolitan region.
- >60,000 tonnes of waste was received from City of Whittlesea in 2020 / 2021 at a significant discount to the market rate.
- Hanson pays a royalty to the City of Whittlesea for waste placed on site
- Hanson collects the landfill waste levy on behalf of the Victorian Government.

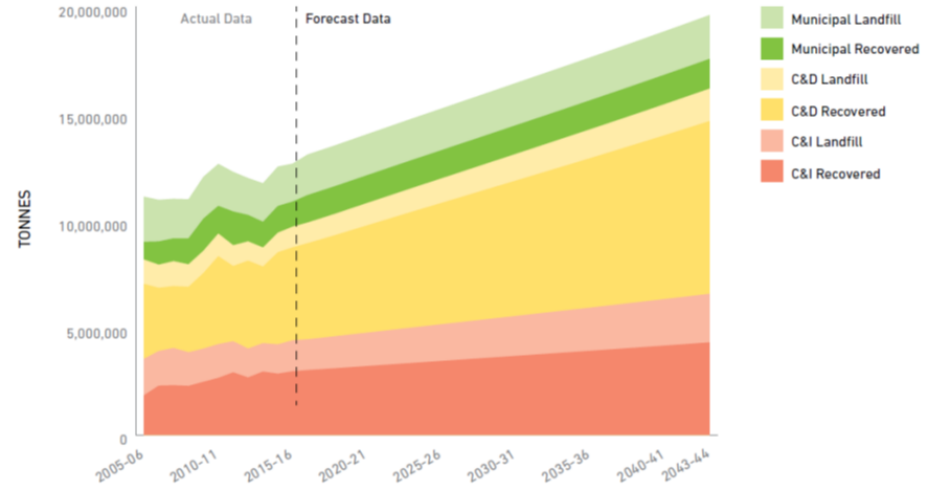
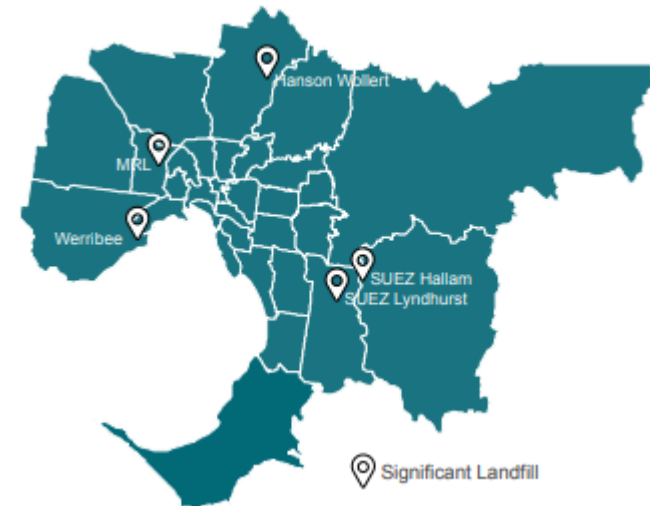
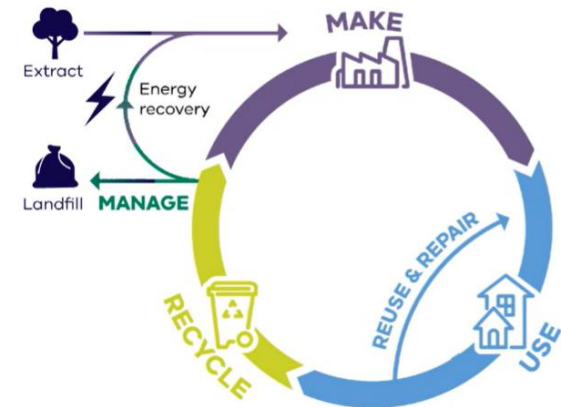


Figure 5: Landfill Disposal Sites



Current Projects

- **Resource Park Wollert** - a dedicated facility renowned for diversion and recovery of valuable resources.
- **Planning Scheme Amendment** – rezone site to Special Use Zone (currently Green Wedge) to allow materials recycling
- **Bridge Inn Road Intersection Upgrade** – installation of traffic signals and improved lighting at landfill intersection
- **Residential Transfer Station** – a modern facility with a focus on resource recovery and recycling
- **Perimeter bund planting** – significant, multi year planting program using >100,000 local indigenous plants to revegetate the site perimeter.
- Positioning the landfill for the circular economy



Questions?



Daniel Fyfe

*Land and Mineral Reserves Manager
Wollert Renewable Energy Landfill Manager
Hanson*

M: 0428 942 672

E: daniel.fyfe@hanson.com.au



Chris Lynch

*Wollert Resource Park
Project Manager
Hanson*

M: 0438 383 923

E: chris.lynch@hanson.com.au