



East Guyong Quarry

2021 Dust Deposition Monitoring

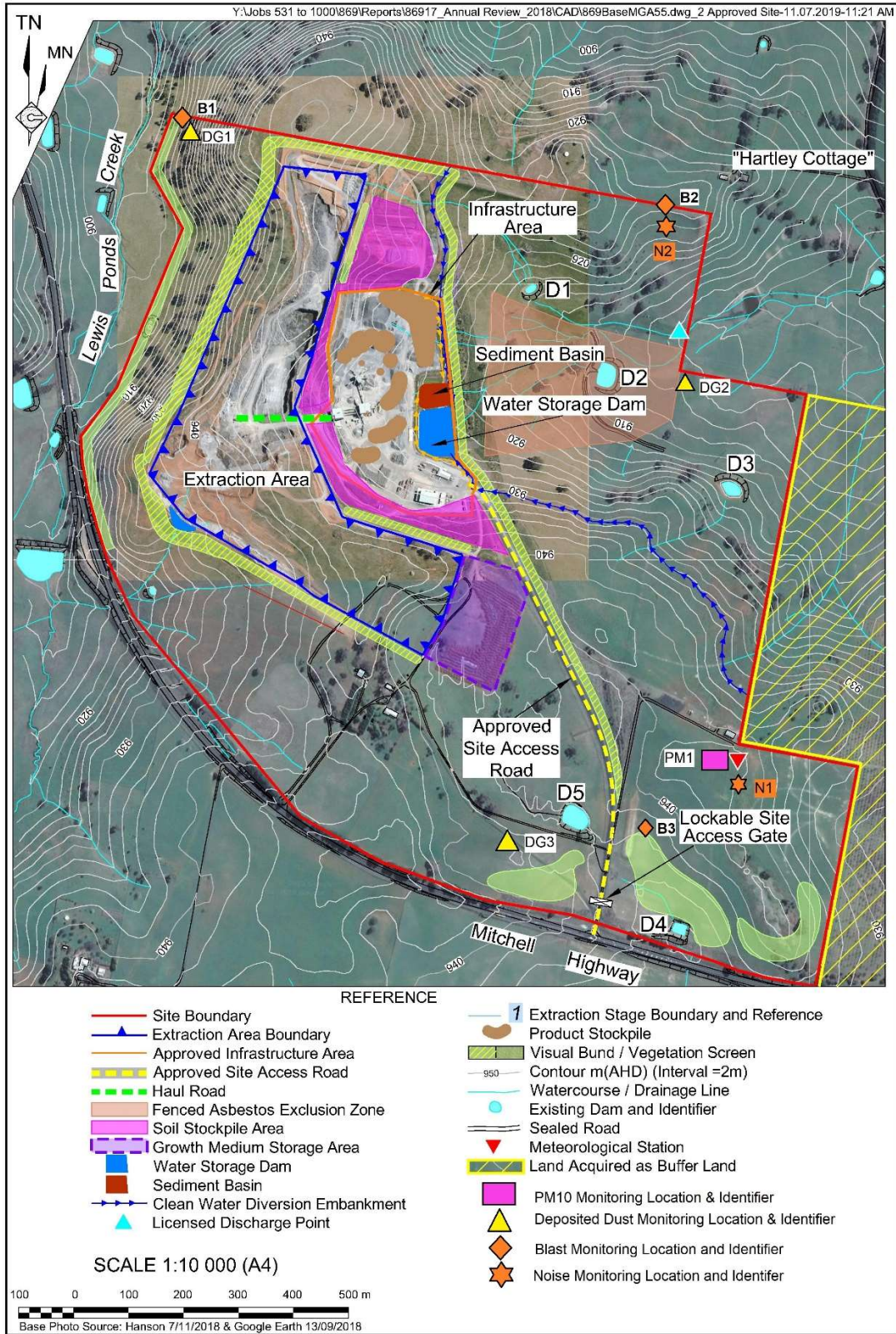


Figure 1: Monitoring locations – East Guyong Quarry ($g/m^2/month$) (2019)

Table 1: Monthly Total Insoluble Matter ($\text{g}/\text{m}^2/\text{month}$) measured for Dust Deposition Gauge 1 during 2021 and calculated rolling annual average Total Insoluble Matter ($\text{g}/\text{m}^2/\text{month}$).

Month and Year	Total Insoluble Matter	Rolling Annual Average	Comments
January 2021	1.5	1.9	
February 2021	0.4	1.3	
March 2021	0.7	0.7	
April 2021	0.7	0.7	
May 2021	0.2	0.6	
June 2021	0.4	0.60	
July 2021	0.4	0.58	
August 2021	0.5	0.62	
September 2021	0.3	0.59	
October 2021	1.3	0.67	
November 2021	2	0.78	
December 2021	1.4	0.82	

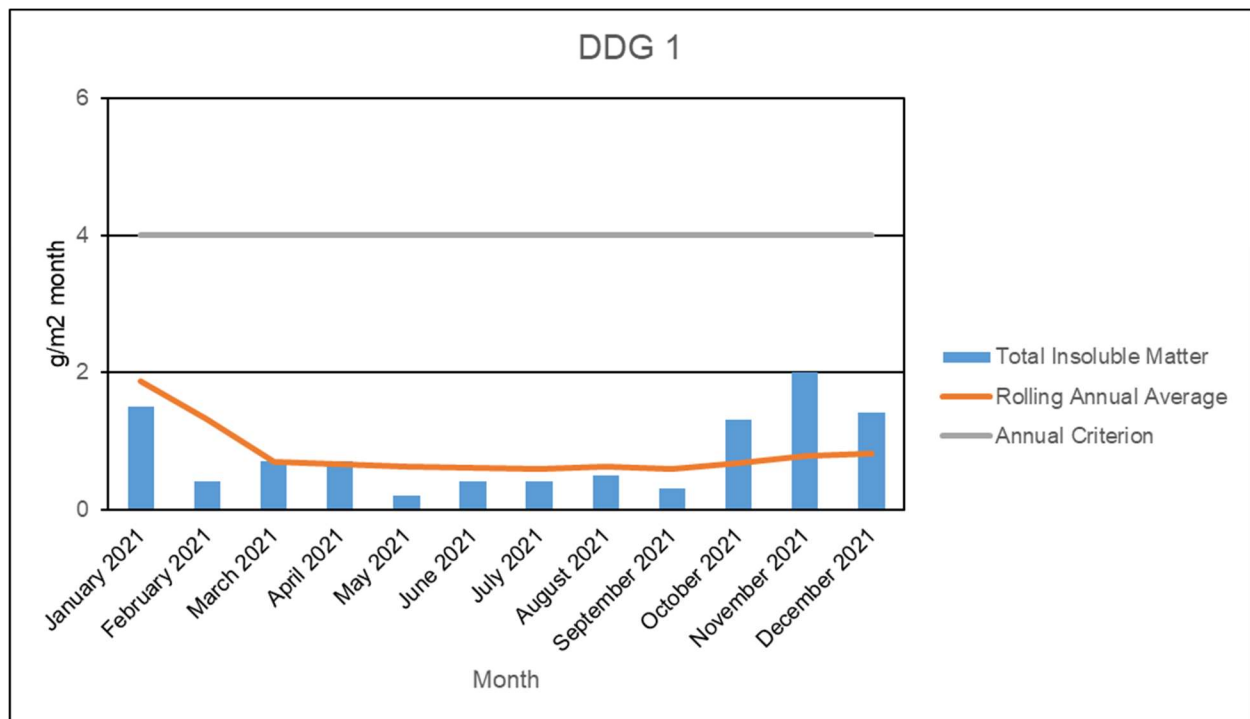


Figure 2: Total Insoluble Matter, rolling annual average, and annual criterion ($\text{g}/\text{m}^2/\text{month}$) for the East Guyong Quarry as measured at DDG-1 during 2021.

Table 2: Monthly Total Insoluble Matter (g/m^2 month) measured for Dust Deposition Gauge 2 during 2021 and calculated rolling annual average Total Insoluble Matter (g/m^2 month).

Month and Year	Total Insoluble Matter	Rolling Annual Average	Comments
January 2021	3.6	2.9	
February 2021	9.7	3.3	
March 2021	3.4	2.9	
April 2021	13.3	3.9	
May 2021	14.3	4.5	
June 2021	16.3	6.28	
July 2021	7.5	6.38	
August 2021	17.2	7.76	
September 2021	3.1	7.95	
October 2021	9.1	8.66	Ongoing organic contamination of DDG2
November 2021	2.9	8.86	
December 2021	31.1	10.96	

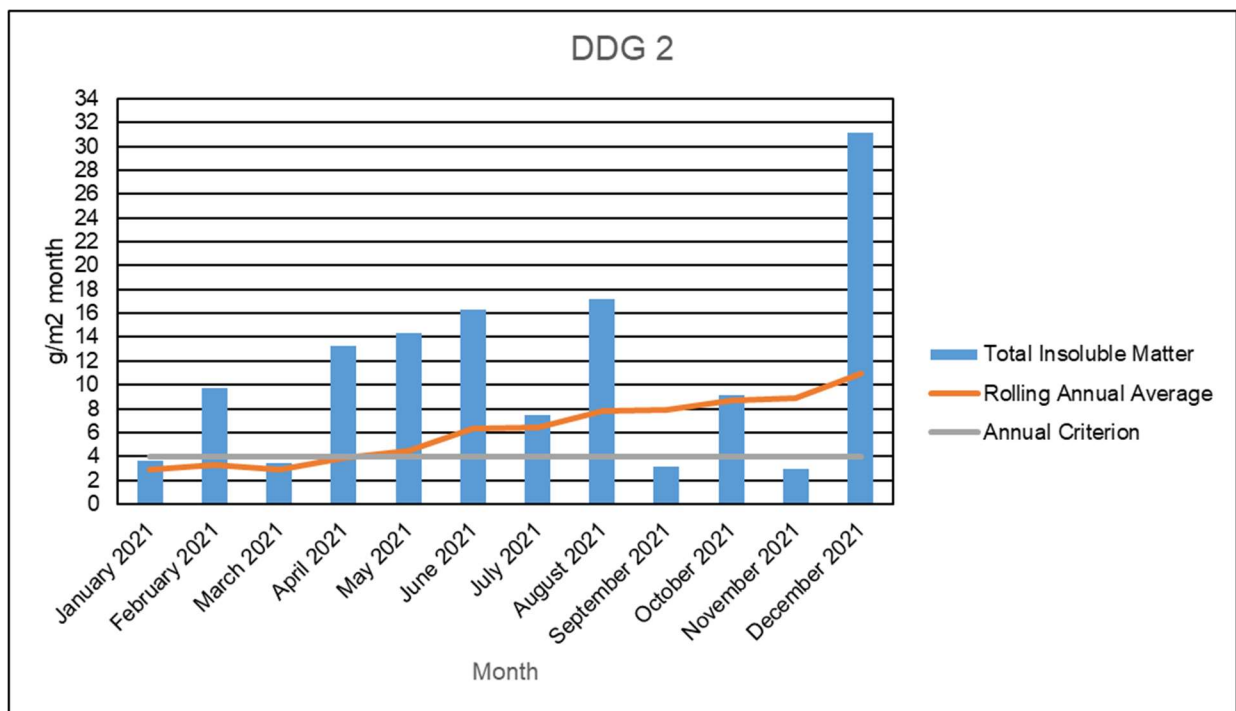


Figure 3: Total Insoluble Matter, rolling annual average, and annual criterion ($\text{g}/\text{m}^2/\text{month}$) for the East Guyong Quarry as measured at DDG-2 during 2021.

Table 3: Monthly Total Insoluble Matter ($\text{g}/\text{m}^2/\text{month}$) measured for Dust Deposition Gauge 3 during 2021 and calculated rolling annual average Total Insoluble Matter ($\text{g}/\text{m}^2/\text{month}$).

Month and Year	Total Insoluble Matter	Rolling Annual Average	Comments
January 2021	0.6	3.1	
February 2021	0.5	2.5	
March 2021	1.3	2.0	
April 2021	0.9	1.9	
May 2021	1.1	1.5	
June 2021	1.8	1.36	
July 2021	0.5	1.29	
August 2021	1.8	1.34	
September 2021	0.7	1.27	
October 2021	5.1	1.64	
November 2021	5.8	1.83	
December 2021	6.3	2.20	

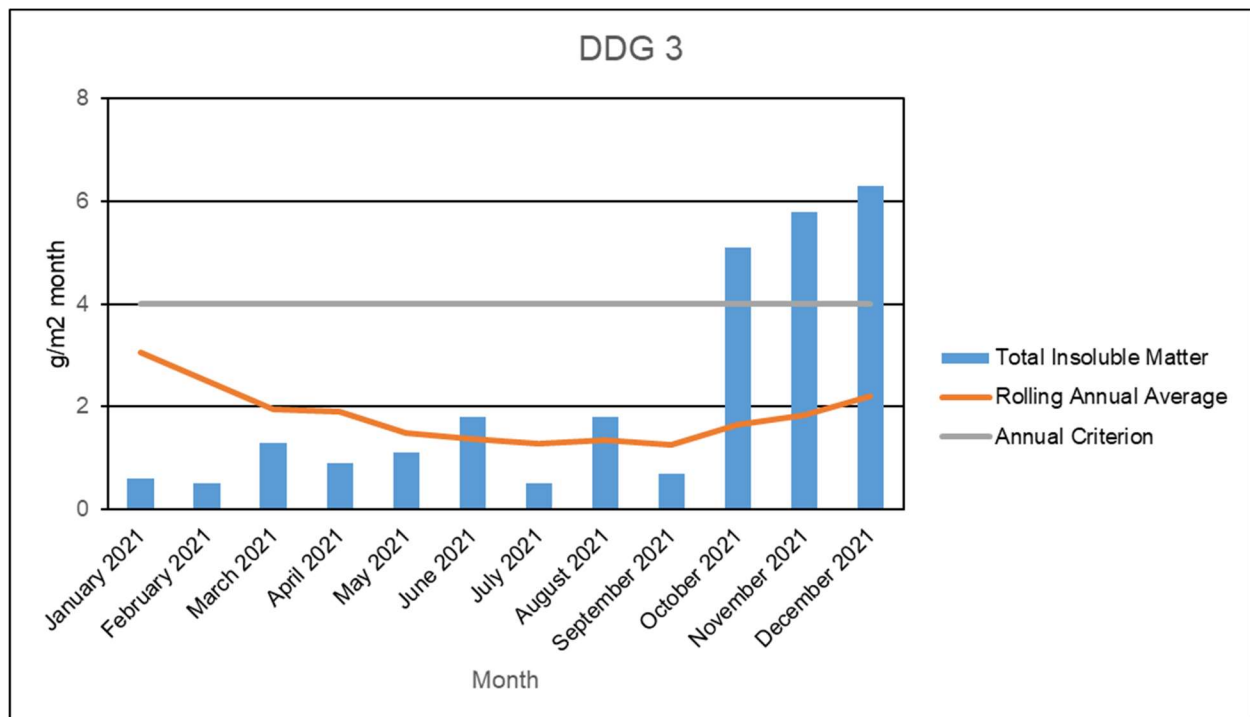


Figure 4: Total Insoluble Matter, rolling annual average, and annual criterion ($\text{g}/\text{m}^2/\text{month}$) for the East Guyong Quarry as measured at DDG-3 during 2021.

Table 4: Monthly Total Insoluble Matter ($\text{g}/\text{m}^2/\text{month}$) measured for Dust Deposition Gauge 4 during 2021 and calculated rolling annual average Total Insoluble Matter ($\text{g}/\text{m}^2/\text{month}$).

Month and Year	Total Insoluble Matter	Rolling Annual Average	Comments
January 2021	2.9	3.9	
February 2021	3.7	3.1	
March 2021	2.4	2.9	
April 2021	0.9	2.4	
May 2021	0.3	2.3	
June 2021	0.7	2.4	
July 2021	0.5	2.3	
August 2021	0.8	2.3	
September 2021	0.5	2.3	
October 2021	1.4	2.3	
November 2021	2.4	2.0	
December 2021	0.1	1.4	

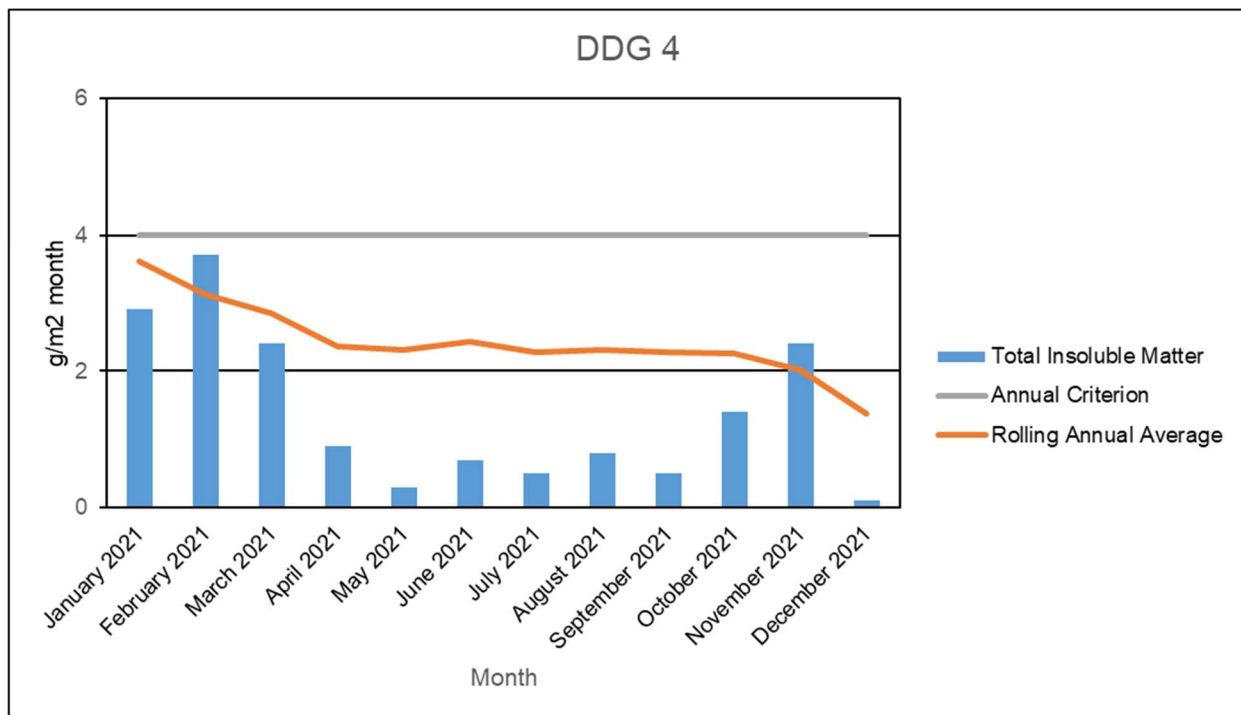


Figure 5: Total Insoluble Matter, rolling annual average, and annual criterion ($\text{g}/\text{m}^2/\text{month}$) for the East Guyong Quarry as measured at DDG-4 during 2021.