



25 November 2020

10-1805 Q4 Report 01 20201125.docx

Hanson Construction Materials Pty Ltd  
Level 5, 75 George Street  
Parramatta NSW 2150

**Attention: Ms Belinda Pignone**

Dear Belinda

**Q4 Noise Compliance Monitoring November 2020  
Central Coast Sands Quarry  
Lot 2 Reservoir Road, Somersby**

## **1 Introduction**

VMS Australia Pty Ltd has been engaged by Hanson Construction Materials Pty Ltd to conduct the quarterly operator-attended noise compliance monitoring for the Central Coast Sands Quarry located at Lot 2 Reservoir Road, Somersby (Project Site), in order to assess noise emission levels from the quarry's operation. This report presents the findings of the morning shoulder period and daytime period measurements conducted at the nearest residential receivers during site activities on Monday 23 November 2020.

## **2 Assessment Criteria**

The Project was granted Project Approval (MP 08\_0173) on 1 August 2014 by the Minister for Planning.

Operational noise criteria for the Project are nominated in Schedule 3, Condition 10 of MP 08\_0173 and are reproduced in **Table 1**.

**Table 1 Project Operational Noise Criteria<sup>1</sup>**

Location	Day	Evening	Morning Shoulder	
	LAeq(15minute)	LAeq(15minute)	LAeq(15minute)	LA1(1minute)
B	37	35	37	47
C	37		38	
D	38		40	
G	38		38	
R	36		38	
All other privately-owned land	35		35	

Note 1: Excerpt from Project Approval 1 August 2014.

### 3 Equipment List

The processing plant was in operation during time of operator-attended noise monitoring. The mobile equipment of the quarry are presented in **Table 2** together with the status during the operator-attended noise monitoring period.

**Table 2 Mobile Equipment List**

ID	Equipment	Make and Model	Status
FEL927	Front-end-loader	Caterpillar 980H	Operational in Pit 2
ADT1203	Dump Truck	Volvo A40G	Operational in Pit 2
FEL1486	Front-end-loader	Volvo L180H	Operational in Sales Yard
FEL070	Front-end-loader	Komatsu WA480-5H	Not operating during time of measurement
ADT072	Dump Truck	Komatsu HM400-1	Not operating during time of measurement
EX096	Excavator	Komatsu PC450-6	Not operating during time of measurement
FTK726	Fuel Truck	Ford Fuel Truck ROPS	Not operating during time of measurement
FEL839	Front-end-loader	Komatsu WA500-6	Not operating during time of measurement
BDZ1026	Dozer	Komatsu D375A	Not operating during time of measurement
WTK1153	Water Truck	Caterpillar 735C	Not operating during time of measurement

The approximate location of the above plant and equipment during this monitoring period is shown in **Figure 1**.

### 4 Noise Monitoring Locations

In accordance with the *Central Coast Sands Quarry Project Noise Management Plan* (report number: 630.01872-R1R3) prepared by SLR Consulting dated 3 January 2018, quarterly noise compliance monitoring will be conducted at location B, C and D during the morning shoulder and daytime periods in order to qualify the intrusive noise emissions from the Project Site. The operator-attended noise compliance monitoring locations are presented **Figure 1**.

**Figure 1 Noise Monitoring and Operating Plant Locations**

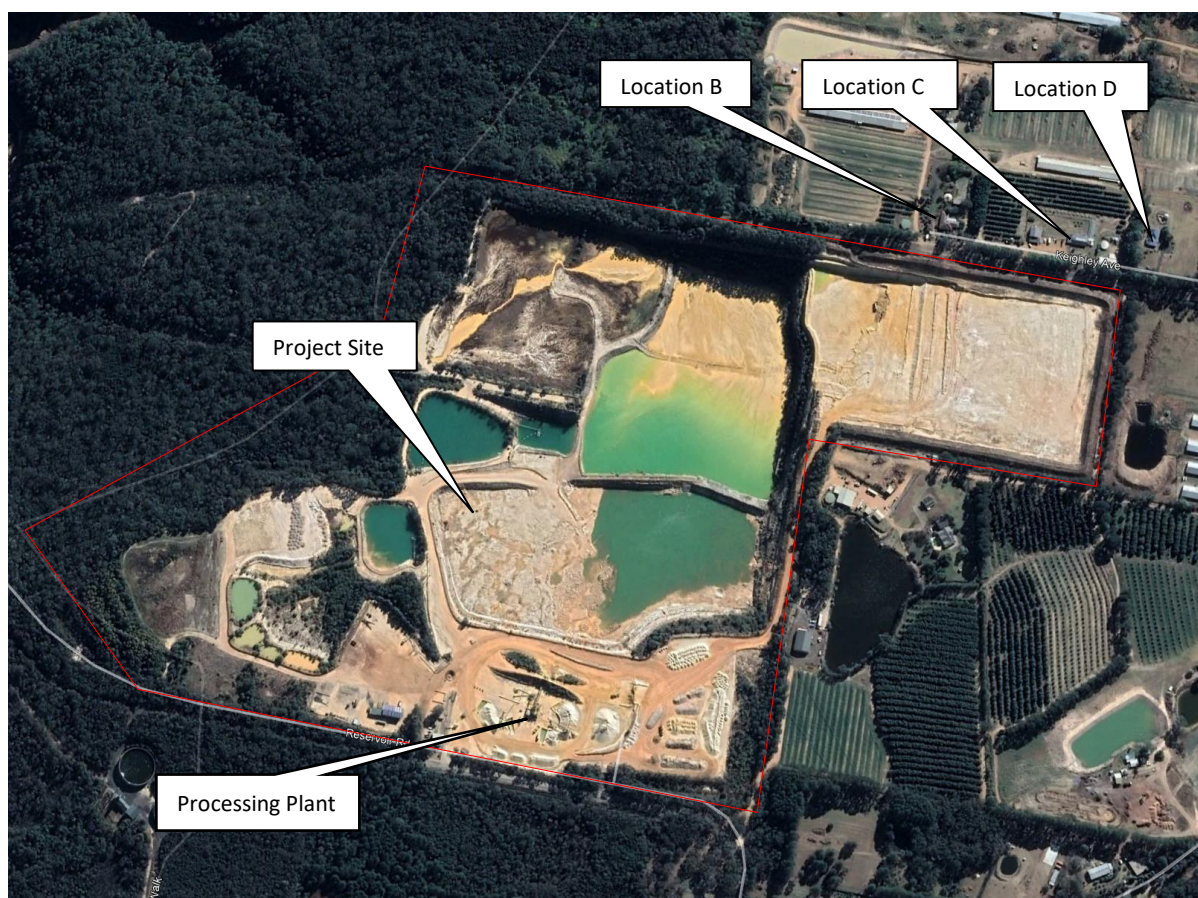


Image courtesy of Google Maps

#### 4.1 Instrumentation and Measurement Procedure

Noise monitoring was conducted in accordance with the procedures specified in the *Central Coast Sands Quarry Project Noise Management Plan* (report number: 630.01872-R1R3) prepared by SLR Consulting dated 3 January 2018.

The acoustic instrumentation employed during the monitoring programme complied with the requirements of AS 1259.1-1990 “Acoustics - Sound Level Meter - Non-Integrating” and IEC 61672.1-2004 “Electroacoustics - Sound Level Meters - Specifications” and carried current NATA or manufacturer calibration certificates. The schedule of noise monitoring equipment deployed during the programme is presented in **Table 3**.

**Table 3 Noise Monitoring Equipment**

Instrumentation	Type	Serial Number
B&K 2250 SLM	Type 1	3023954
B&K 4231 Acoustic Calibrator	Type 1	2574227

In order to determine compliance with the noise limits nominated in **Table 1**, operator-attended 15-minute noise surveys were conducted on Monday 23 November 2020 at the nominated residential receivers.

The measurements were conducted in accordance with Australian Standard AS 1055-1997 "Acoustics - Description and measurement of environmental noise".

A level calibration check was undertaken using an acoustic calibrator which emitted a 94 dBA calibration tone at 1 KHz. The calibration check was conducted prior and after the survey with no shift noted during the calibration process.

## 5 Operational Noise Compliance Monitoring Results

The measured noise levels from the operator-attended noise monitoring together with the estimated noise contribution from the quarry operations are presented in **Table 4** and **Table 5**, during the morning shoulder period and daytime period, respectively.

**Table 4 Operational Noise Compliance Monitoring Results - Morning Shoulder Period (dBA Re 20µPa)**

Location	Date Start Time Weather	Measured Noise Level		Description of Noise Emission, Typical Maximum Levels	Estimated Noise Contribution from the Project Site		Assessment
		LAeq (15minute)	LA1 (1minute)		LAeq (15minute)	LA1 (1minute)	
B – 126A Keighley Avenue	23/11/2020 6.00am Wind: Calm Temp: 14 °C Cloud: 0 okta	47	59	Birds: 54-64 Road Traffic (Pacific Highway): 40-47 <b>Quarry noise not audible</b>	<37	<47	<b>Complies</b>
C – 110 Keighley Avenue	23/11/2020 6.37am Wind: Calm Temp: 14 °C Cloud: 14 okta	55	71	Birds: 54-75 Road Traffic (Pacific Highway): 39-44 <b>Front-end-loader (intermittent): 34-38 Bucket: 42</b>	34	39	<b>Complies</b>
D – 100 Keighley Avenue	23/11/2020 6.17am Wind: Calm Temp: 14 °C Cloud: 2 okta	45	54	Birds: 53-63 Road Traffic (Pacific Highway): 40-47 <b>Front-end-loader (intermittent): 33-38</b>	33	38	<b>Complies</b>



**Table 5 Operational Noise Compliance Monitoring Results - Daytime Period (dBA Re 20µPa)**

Location	Date Start Time Weather	Measured Noise Level	Description of Noise Emission, Typical Maximum Levels	Estimated Noise Contribution from the Project Site	Assessment
		LAeq (15minute)		LAeq (15minute)	
B – 126A Keighley Avenue	23/11/2020 7.42am Wind: Calm Temp: 15 °C Cloud: 4 okta	45	Birds: 44-62 Dog Barking: 44-52 Water Pump: 42-43 Road Traffic (Pacific Highway): 39-42 <b>Front-end-loader (intermittent): 35-38</b> <b>Dump Truck: 32-38</b>	36	Complies
C – 110 Keighley Avenue	23/11/2020 7.01am Wind: Calm Temp: 14 °C Cloud: 3 okta	42	Birds: 42-54 Road Traffic (Pacific Highway): 39-42 <b>Front-end-loader (intermittent): 37-40</b> <b>Dump Truck: 32-33</b> <b>Reversing Alarm: 38-39</b>	35	Complies
D – 100 Keighley Avenue	23/11/2020 7.17am Wind: Calm Temp: 14 °C Cloud: 3 okta	43	Birds: 43-46 Road Traffic (Pacific Highway): 39-42 Local Road Traffic: 46-48 <b>Front-end-loader (intermittent): 37-39</b> <b>Reversing Alarm: 38-39</b>	35	Complies

## 6 Assessment and Findings

Operator-attended noise monitoring conducted at the Central Coast Sands Quarry during the morning shoulder period on Monday 23 November 2020 found that the noise emissions from the Project Site complied with both the LAeq(15minute) and LA1(1minute) noise criteria nominated in Schedule 3, Condition 10 of the Project Approval at the noise monitoring location B, C and D.

Furthermore, operator-attended noise monitoring conducted during the daytime period found that the noise emissions from the Project Site complied with the LAeq(15minute) noise criteria nominated in Schedule 3, Condition 10 of the Project Approval at the noise monitoring location B, C and D.

I trust that the above report meets your current requirements. Should you have any questions or require any additional information, please contact me on 0423 353 848.

Yours sincerely



**YANG LIU**  
Technical Director – Acoustics and Vibration

## Terminology Relating to Noise and Vibration

Sound Pressure	Sound, or sound pressure, is a fluctuation in air pressure over the static ambient pressure.
Sound Power	Sound Power is the rate at which sound energy is emitted, reflected, transmitted, or received, per unit time. Unlike sound pressure, sound power is neither room-dependent nor distance-dependent.
Sound Pressure Level (SPL)	The sound level is the sound pressure relative to a standard reference pressure of 20µPa (20x10 <sup>-6</sup> Pascals) on a decibel scale.
Sound Power Level (SWL)	The Sound Power Level is the sound power relative to a standard reference pressure of 1pW (20x10 <sup>-12</sup> Watts) on a decibel scale. The SWL of a simple point source may be used to calculate the SPL at a given distance (r) using the following formula: $SPL = SWL - 10 \times \text{Log}_{10}(4 \times \pi \times r^2)$ Note that the above formula is only valid for sound propagation in the free-field (see below).
Decibel (dB)	A scale for comparing the ratios of two quantities, including sound pressure and sound power. The difference in level between two sounds s1 and s2 is given by 20 log <sub>10</sub> (s1 / s2). The decibel can also be used to measure absolute quantities by specifying a reference value that fixes one point on the scale. For sound pressure, the reference value is 20µPa.
A-weighting, dBA	The unit of sound level weighted according to the A-scale, which takes into account the increased sensitivity of the human ear at some frequencies.
Noise Level Indices	Noise levels usually fluctuate over time, so it is often necessary to consider an average or statistical noise level. This can be done in several ways, so a number of different noise indices have been defined, according to how the averaging or statistics are carried out.
Leq,T	A noise level index called the equivalent continuous noise level over the time period T. This is the level of a notional steady sound that would contain the same amount of sound energy as the actual, possibly fluctuating, sound that was recorded.
Lmax,T	A noise level index defined as the maximum noise level during the period T. Lmax is sometimes used for the assessment of occasional loud noises, which may have little effect on the overall Leq noise level but will still affect the noise environment. Unless described otherwise, it is measured using the 'fast' sound level meter response.
L90,T	A noise level index. The noise level exceeded for 90% of the time over the period T. L90 can be considered to be the "average minimum" noise level and is often used to describe the background noise.
L10,T	A noise level index. The noise level exceeded for 10% of the time over the period T. L10 can be considered to be the "average maximum" noise level. Generally used to describe road traffic noise.
Free-Field	Far from the presence of sound reflecting objects (except the ground), usually taken to mean at least 3.5m
Fast/Slow Time Weighting	Averaging times used in sound level meters.
Octave Band	A range of frequencies whose upper limit is twice the frequency of the lower limit.
DnT,w	The single number quantity that characterises airborne sound insulation between rooms over a range of frequencies.
Rw	Single number quantity that characterises the airborne sound insulating properties of a material or building element over a range of frequencies.
Reverberation	The persistence of sound in a space after a sound source has been stopped.
PPV	The particles of a medium are displaced from their random motion in the presence of a vibration wave. The greatest instantaneous velocity of a particle during this displacement is called the Peak Particle Velocity (PPV) and is typically measured in the units of mm/s.
Hertz, Hz	The unit of Frequency (or Pitch) of a sound or vibration. One hertz equals one cycle per second. 1 kHz = 1000 Hz, 2 kHz = 2000 Hz, etc.
Acceleration	Acceleration is defined as the rate of change of Velocity of a particle over a period of time and is typically measured in the units of m/sec <sup>2</sup> .
Vibration Dose, VDV	When assessing intermittent vibration, it is necessary to use the vibration dose value (VDV), a cumulative measurement of the vibration level received over an 8-hour or 16-hour period.  The VDV formulae uses the RMS Acceleration raised to the fourth power and is known as the Root-mean-quad method. This technique ensures the VDV is more sensitive to the peaks in the acceleration levels. VDV's are typically measured in the units of m/s <sup>1.75</sup> .