

Brandy Hill Quarry Information	
Premise Details	Hanson – Brandy Hill Quarry
Address	Off Seaham Road Seaham NSW 2324
Licensee	Hanson Construction Materials Pty Ltd
EPL Number	1879
EPL Location	https://apps.epa.nsw.gov.au/prpoeoapp/ViewPOEOLicence.aspx?DOCID=152351&SYSUID=1&LICID=1879

The monitoring report is to satisfy the requirements of Section 66 (6) of the *Protection of Environment and Operations Act 1997*, to make available, within 14 days of request, any monitoring data that relates to pollution under an Environmental Protection Licence.

The monitoring of pollutants provided in this report is undertaken as per the requirements of Environment Protection Licence 1879 (EPL 1879 – Brandy Hill Quarry)

This report provides environmental monitoring data for Brandy Hill Quarry for the period 1 January 2016 to 30 January 2021.

Monitoring data in this report relates to the monitoring undertaken in the reporting period for the following environmental pollutants:

- Deposited Dust (monthly monitoring)
- Water discharge
- Blasting
- Noise Monitoring (annual monitoring)

Discharge at Point 1, 2, 3 require the following monitoring requirements			
Pollutant	Units of measure	Frequency	Sampling Method
Particulates - Deposited Matter	grams per square metre per month	Monthly	AM- 19

Discharge at Point 4, 5, 6 require the following monitoring requirements			
Pollutant	Units of measure	Frequency	Sampling Method
Oil and Grease	micrograms per litre	Daily during any discharge	Special Method 1 (grab sample during discharge and visual inspection)
pH	pH	Daily during any discharge	Grab sample
TSS	milligrams per litre	Daily during any discharge	Grab sample

Blast (L5)

L5.2 The airblast overpressure level from blasting operations in or on the premises must not exceed:

- 115 dB (Lin Peak) for more than 5% of the total number of blasts during each reporting period; and
 - 120 dB (Lin Peak) at any time,
- at either monitoring point 7 or 8 as identified at condition P1.4.

L5.3 The ground vibration peak particle velocity from blasting operations carried out in or on the premises must not exceed:

- 5 mm/second for more than 5% of the total number of blasts carried out on the premises during each reporting period; and
 - 10 mm/second at any time,
- at either monitoring point 7 or 8 as identified at condition P1.4.

Noise (L2)

L2 Noise generated at the premises must not exceed the noise limits in the table below.

Locality	Location	Noise Limits dB(A) Day / Evening / Night Laeq(15 min)	Noise Limits dB(A) Night LA1(1 min)
R1	13B Giles Road, Seaham	36	45
R2	115 Brandy Hill Drive, Seaham	36	45
R3	13 Mooghin Road, Seaham	36	45
All other noise receiver locations		36	45

Sample Location	Sample Collector	Sample Reference No.	Date	Time	pH (site)	TSS (mg/L)	pH (lab)	Oil/grease (mg/L)	Discharge? Number of days	Comments
Jun-21										
4 (North Sediment Dam 2)	No Discharge - North Sediment Dam 2 no longer in use/no longer a water catchment									
5 (Polishing Dam 3)	VGT Contractor		31/05/2021			<5	7.9	<5		
6 (North Sediment Dam 1)	VGT Contractor		31/05/2021			<5	8.1	<5		
May-21										
4 (North Sediment Dam 2)	No Discharge - North Sediment Dam 2 no longer in use/no longer a water catchment									
5 (Polishing Dam 3)	VGT Contractor		3/05/2021			6	8.1	<5		
6 (North Sediment Dam 1)	VGT Contractor		3/05/2021			6	8.1	<5		
Apr-21										
4 (North Sediment Dam 2)	No Discharge - North Sediment Dam 2 no longer in use/no longer a water catchment									
5 (Polishing Dam 3)	VGT Contractor		19/04/2021			6	8	<5		
6 (North Sediment Dam 1)	VGT Contractor		19/04/2021			3	8.1	<5		
Mar-21										
4 (North Sediment Dam 2)	No Discharge - North Sediment Dam 2 no longer in use/no longer a water catchment									
5 (Polishing Dam 3)	VGT Contractor		8/03/2021			2	7.76	<5		
6 (North Sediment Dam 1)	VGT Contractor		8/03/2021			2	8.03	<5		
Feb-21										
4 (North Sediment Dam 2)	No Discharge - North Sediment Dam 2 no longer in use/no longer a water catchment									
5 (Polishing Dam 3)	VGT Contractor		8/02/2021			3	8.28	<5		
6 (North Sediment Dam 1)	VGT Contractor		8/02/2021			9	8.3	<5		
Jan-21										
4 (North Sediment Dam 2)	No Discharge - North Sediment Dam 2 no longer in use/no longer a water catchment									
5 (Polishing Dam 3)	VGT Contractor		11/01/2021			3	8	<5		
6 (North Sediment Dam 1)	VGT Contractor		11/01/2021			<2	8.4	<5		
Dec-20										
4 (North Sediment Dam 2)	No Discharge - North Sediment Dam 2 no longer in use/no longer a water catchment									
5 (Polishing Dam 3)	Shaun Boland		14/12/2020			4	8.5	<5		
6 (North Sediment Dam 1)	Shaun Boland		14/12/2020			2	8.2	<5		
Nov-20										
4 (North Sediment Dam 2)	No Discharge - North Sediment Dam 2 no longer in use/no longer a water catchment									
5 (Polishing Dam 3)	Shaun Boland		16/11/2020			6	8.7	<5		
6 (North Sediment Dam 1)	Shaun Boland		16/11/2020			6	8.1	<5		
Oct-20										
4 (North Sediment Dam 2)	No Discharge - North Sediment Dam 2 no longer in use/no longer a water catchment									
5 (Polishing Dam 3)	Shaun Boland		19/10/2020			21	7.9	<5		
6 (North Sediment Dam 1)	Shaun Boland		19/10/2020			<2	8.2	<5		
Sep-20										
4 (North Sediment Dam 2)	No Discharge - North Sediment Dam 2 no longer in use/no longer a water catchment									
5 (Polishing Dam 3)	Shaun Boland		21/09/2020			6	8.2	<5		
6 (North Sediment Dam 1)	Shaun Boland		21/09/2020			3	8.5	<5		
Aug-20										
4 (North Sediment Dam 2)	No Discharge - North Sediment Dam 2 no longer in use/no longer a water catchment									
5 (Polishing Dam 3)	Shaun Boland		24/08/2020			4	7.9	<5		
6 (North Sediment Dam 1)	Shaun Boland		24/08/2020			3	8.2	<5		

Jul-20									
4 (North Sediment Dam 2)	No Discharge - North Sediment Dam 2 no longer in use/no longer a water catchment								
5 (Polishing Dam 3)	Shaun Boland		27/07/2020			2	8	<5	
6 (North Sediment Dam 1)	Shaun Boland		27/07/2020			2	7.7	<5	
Jun-20									
4 (North Sediment Dam 2)	No Discharge - North Sediment Dam 2 no longer in use/no longer a water catchment								
5 (Polishing Dam 3)	Shaun Boland		29/06/2020			2	8	<5	
6 (North Sediment Dam 1)	Shaun Boland		29/06/2020			2	7.7	<5	
Jun-20									
4 (North Sediment Dam 2)	No Discharge - North Sediment Dam 2 no longer in use/no longer a water catchment								
5 (Polishing Dam 3)	Shaun Boland		1/06/2020			6	8	<5	
6 (North Sediment Dam 1)	Shaun Boland		1/06/2020			<2	7.8	<5	
May-20									
4 (North Sediment Dam 2)	No Discharge - North Sediment Dam 2 no longer in use/no longer a water catchment								
5 (Polishing Dam 3)	Shaun Boland		4/05/2020			3	7.6	<5	
6 (North Sediment Dam 1)	Shaun Boland		4/05/2020			<2	7.9	<5	
Apr-20									
4 (North Sediment Dam 2)	No Discharge - North Sediment Dam 2 no longer in use/no longer a water catchment								
5 (Polishing Dam 3)	Shaun Boland		6/04/2020			12	7.6	<5	
6 (North Sediment Dam 1)	Shaun Boland		6/04/2020			18	7.6	<5	
Mar-20									
4 (North Sediment Dam 2)	No Discharge - North Sediment Dam 2 no longer in use/no longer a water catchment								
5 (Polishing Dam 3)	Shaun Boland		9/03/2020			15	7.6	<5	
6 (North Sediment Dam 1)	Shaun Boland		9/03/2020			6	8.1	<5	
Feb-20									
4 (North Sediment Dam 2)	No Discharge - North Sediment Dam 2 no longer in use/no longer a water catchment								
5 (Polishing Dam 3)	Shaun Boland		10/02/2020			134	7.8	<5	
6 (North Sediment Dam 1)	Shaun Boland		10/02/2020			3	8.2	<5	
Jan-20									
4 (North Sediment Dam 2)	No Discharge - North Sediment Dam 2 no longer in use/no longer a water catchment								
5 (Polishing Dam 3)	Shaun Boland		13/01/2020			11	7.8	<5	
6 (North Sediment Dam 1)	Shaun Boland		13/01/2020			<2	8.2	<5	
Dec-19									
4 (North Sediment Dam 2)	No Discharge - North Sediment Dam 2 no longer in use/no longer a water catchment								
5 (Polishing Dam 3)	Shaun Boland		16/12/2019			9	8.2	<5	
6 (North Sediment Dam 1)	Shaun Boland		16/12/2019			<2	8.5	<5	
Nov-19									
4 (North Sediment Dam 2)	No Discharge - North Sediment Dam 2 no longer in use/no longer a water catchment								
5 (Polishing Dam 3)	Shaun Boland		18/11/2019			5	8.8	<5	
6 (North Sediment Dam 1)	Shaun Boland		18/11/2019			<2	8.5	<5	
Oct-19									
4 (North Sediment Dam 2)	No Discharge - North Sediment Dam 2 no longer in use/no longer a water catchment								
5 (Polishing Dam 3)	Shaun Boland		21/10/2019			3	8.7	<5	
6 (North Sediment Dam 1)	Shaun Boland		21/10/2019			<2	8.4	<5	
Sep-19									
4 (North Sediment Dam 2)	No Discharge - North Sediment Dam 2 no longer in use/no longer a water catchment								
5 (Polishing Dam 3)	Shaun Boland		23/09/2019			22	8	<5	

6 (North Sediment Dam 1)	Shaun Boland		23/09/2019			<2	8.5	<5		
Aug-19										
4 (North Sediment Dam 2)	No Discharge - North Sediment Dam 2 no longer in use/no longer a water catchment									
5 (Polishing Dam 3)	Shaun Boland		26/08/2019			3	8.2	<5		
6 (North Sediment Dam 1)	Shaun Boland		26/08/2019			<2	8.3	<5		
Jul-19										
4 (North Sediment Dam 2)	No Discharge - North Sediment Dam 2 no longer in use/no longer a water catchment									
5 (Polishing Dam 3)	Shaun Boland		29/07/2019			<2	8.1	<5		
6 (North Sediment Dam 1)	Shaun Boland		29/07/2019			<2	8.2	<5		
Jun-19										
4 (North Sediment Dam 2)	No Discharge - North Sediment Dam 2 no longer in use/no longer a water catchment									
5 (Polishing Dam 3)	Shaun Boland		28/06/2019			10	8.1	<5		
6 (North Sediment Dam 1)	Shaun Boland		28/06/2019			5	8.1	<5		
May-19										
4 (North Sediment Dam 2)	No Discharge - North Sediment Dam 2 no longer in use/no longer a water catchment									
5 (Polishing Dam 3)	Shaun Boland		5/05/2019			7	8.2	<5		
5 (Polishing Dam 3)	Shaun Boland		31/05/2019			<2	8.1	<5		
6 (North Sediment Dam 1)	Shaun Boland		5/05/2019			<2	8.3	<5		
6 (North Sediment Dam 1)	Shaun Boland		31/05/2019			<2	7.8	<5		
Apr-19										
4 (North Sediment Dam 2)	No Discharge - North Sediment Dam 2 no longer in use/no longer a water catchment									
5 (Polishing Dam 3)	Shaun Boland		5/04/2019			12	7.8	<5		
6 (North Sediment Dam 1)	Shaun Boland		5/04/2019			5	8.1	<5		
Mar-19										
4 (North Sediment Dam 2)	No Discharge - North Sediment Dam 2 no longer in use/no longer a water catchment									
5 (Polishing Dam 3)	Shaun Boland		6/03/2019			5	7.8	<5		
6 (North Sediment Dam 1)	Shaun Boland		6/03/2019			<2	8.5	<5		
Feb-19										
4 (North Sediment Dam 2)	No Discharge - North Sediment Dam 2 no longer in use/no longer a water catchment									
5 (Polishing Dam 3)	Shaun Boland		6/02/2019			4	7.8	<5		
6 (North Sediment Dam 1)	Shaun Boland		6/02/2019			<2	8.5	<5		
Jan-19										
4 (North Sediment Dam 2)	No Discharge - North Sediment Dam 2 no longer in use/no longer a water catchment									
5 (Polishing Dam 3)	Shaun Boland		9/01/2019			<2	8	<5		
6 (North Sediment Dam 1)	Shaun Boland		9/01/2019			<2	8.4	<5		
Dec-18										
4 (North Sediment Dam 2)	No Discharge - North Sediment Dam 2 no longer in use/no longer a water catchment									
5 (Polishing Dam 3)	Shaun Boland		12/12/2018			9	7.7	<5		
6 (North Sediment Dam 1)	Shaun Boland		12/12/2018			2	8.5	<5		
Nov-18										
4 (North Sediment Dam 2)	No Discharge - North Sediment Dam 2 no longer in use/no longer a water catchment									
5 (Polishing Dam 3)	Shaun Boland		14/11/2018			2	8.5	<5		
6 (North Sediment Dam 1)	Shaun Boland		14/11/2018			2	8.3	<5		
Oct-18										
4 (North Sediment Dam 2)	No Discharge - North Sediment Dam 2 no longer in use/no longer a water catchment									
5 (Polishing Dam 3)	Shaun Boland		17/10/2018			10	8.1	<5		
6 (North Sediment Dam 1)	Shaun Boland		17/10/2018			10	8.5	<5		

Sep-18									
4 (North Sediment Dam 2)	No Discharge - North Sediment Dam 2 no longer in use/no longer a water catchment								
5 (Polishing Dam 3)	Shaun Boland		19/09/2018			4	7.9	<5	
6 (North Sediment Dam 1)	Shaun Boland		19/09/2018			2	8.3	<5	
Aug-18									
4 (North Sediment Dam 2)	No Discharge - North Sediment Dam 2 no longer in use/no longer a water catchment								
5 (Polishing Dam 3)	Shaun Boland		22/08/2018			6	8.2	<5	
6 (North Sediment Dam 1)	Shaun Boland		22/08/2018			<2	8.3	<5	
Jul-18									
4 (North Sediment Dam 2)	No Discharge - North Sediment Dam 2 no longer in use/no longer a water catchment								
5 (Polishing Dam 3)	Shaun Boland		25/07/2018			3	8.2	<5	
6 (North Sediment Dam 1)	Shaun Boland		25/07/2018			<2	8.2	<5	
Jun-18									
4 (North Sediment Dam 2)	No Discharge - North Sediment Dam 2 no longer in use/no longer a water catchment								
5 (Polishing Dam 3)	Shaun Boland		27/06/2018			3	7.9	<5	
6 (North Sediment Dam 1)	Shaun Boland		27/06/2018			<2	8.1	<5	
May-18									
4 (North Sediment Dam 2)	No Discharge - North Sediment Dam 2 no longer in use/no longer a water catchment								
5 (Polishing Dam 3)	Shaun Boland		2/05/2018			11	7.7	<5	
5 (Polishing Dam 3)	Shaun Boland		30/05/2018			3	7.9	<5	
6 (North Sediment Dam 1)	Shaun Boland		2/05/2018			<2	8	<5	
6 (North Sediment Dam 1)	Shaun Boland		30/05/2018			<2	8.1	<5	
Apr-18									
4 (North Sediment Dam 2)	No Discharge - North Sediment Dam 2 no longer in use/no longer a water catchment								
5 (Polishing Dam 3)	Shaun Boland		4/04/2018			25	7.8	<5	
6 (North Sediment Dam 1)	Shaun Boland		4/04/2018			<2	8.3	<5	
Mar-18									
4 (North Sediment Dam 2)	No Discharge - North Sediment Dam 2 no longer in use/no longer a water catchment								
5 (Polishing Dam 3)	Shaun Boland		7/03/2018			30	7.7	<5	
6 (North Sediment Dam 1)	Shaun Boland		7/03/2018			1	8.1	<5	
Feb-18									
4 (North Sediment Dam 2)	No Discharge - North Sediment Dam 2 no longer in use/no longer a water catchment								
5 (Polishing Dam 3)	Shaun Boland		7/02/2018			10	9.5	<5	
6 (North Sediment Dam 1)	Shaun Boland		7/02/2018			1	8.3	<5	
Jan-18									
4 (North Sediment Dam 2)	No Discharge - North Sediment Dam 2 no longer in use/no longer a water catchment								
5 (Polishing Dam 3)	Shaun Boland		10/01/2018			26	9.3	<5	
6 (North Sediment Dam 1)	Shaun Boland		10/01/2018			1	8.2	<5	
Dec-17									
4 (North Sediment Dam 2)	No Discharge - North Sediment Dam 2 no longer in use/no longer a water catchment								
5 (Polishing Dam 3)	Shaun Boland								
6 (North Sediment Dam 1)	Shaun Boland								
Nov-17									
4 (North Sediment Dam 2)	No Discharge - North Sediment Dam 2 no longer in use/no longer a water catchment								
5 (Polishing Dam 3)	Shaun Boland								
6 (North Sediment Dam 1)	Shaun Boland								
Oct-17									

4 (North Sediment Dam 2)	No Discharge - North Sediment Dam 2 no longer in use/no longer a water catchment								
5 (Polishing Dam 3)	Shaun Boland		18/10/2017			43	8.3	<5	
6 (North Sediment Dam 1)	Shaun Boland		18/10/2017			2	8.6	<5	
Sep-17									
4 (North Sediment Dam 2)	No Discharge - North Sediment Dam 2 no longer in use/no longer a water catchment								
5 (Polishing Dam 3)	Shaun Boland		20/09/2017			14	9	<5	
6 (North Sediment Dam 1)	Shaun Boland		20/09/2017			3	8.6	<5	
Aug-17									
4 (North Sediment Dam 2)	No Discharge - North Sediment Dam 2 no longer in use/no longer a water catchment								
5 (Polishing Dam 3)	Shaun Boland		23/08/2017			24	8.9	<5	
6 (North Sediment Dam 1)	Shaun Boland		23/08/2017			<2	8.5	<5	
Jul-17									
4 (North Sediment Dam 2)	No Discharge - North Sediment Dam 2 no longer in use/no longer a water catchment								
5 (Polishing Dam 3)	Shaun Boland		26/07/2017			19	8.6	<5	
6 (North Sediment Dam 1)	Shaun Boland		26/07/2017			<1	8.4	<5	
Jun-17									
4 (North Sediment Dam 2)	No Discharge - North Sediment Dam 2 no longer in use/no longer a water catchment								
5 (Polishing Dam 3)	Shaun Boland		28/06/2017			19	8.1	<5	
6 (North Sediment Dam 1)	Shaun Boland		28/06/2017			1	67	<5	
May-17									
4 (North Sediment Dam 2)	Shaun Boland		31/05/2017			112	7.8	<5	
5 (Polishing Dam 3)	Shaun Boland		31/05/2017			19	8.1	<5	
6 (North Sediment Dam 1)	Shaun Boland		31/05/2017			1	67	<5	
May-17									
4 (North Sediment Dam 2)	Shaun Boland		12/05/2017			5	9.5	<5	
5 (Polishing Dam 3)	Shaun Boland		12/05/2017			31	8	<5	
6 (North Sediment Dam 1)	Shaun Boland		12/05/2017			<1	8.4	<5	
Apr-17									
4 (North Sediment Dam 2)	Shaun Boland		5/04/2017			11	8.2	<5	
5 (Polishing Dam 3)	Shaun Boland		5/04/2017			25	7.6	<5	
6 (North Sediment Dam 1)	Shaun Boland		5/04/2017			3	8.5	<5	
Mar-17									
4 (North Sediment Dam 2)	Shaun Boland		7/03/2017			40	7.9	<5	
5 (Polishing Dam 3)	Shaun Boland		7/03/2017			143	8	<5	
6 (North Sediment Dam 1)	Shaun Boland		7/03/2017			6	8.3	<5	
Feb-17									
4 (North Sediment Dam 2)	Shaun Boland		3/02/2017			60	9	<5	
5 (Polishing Dam 3)	Shaun Boland		3/02/2017			<2	7.6	<5	
6 (North Sediment Dam 1)	Shaun Boland		3/02/2017			2	8.5	<5	
Jan-17									
4 (North Sediment Dam 2)	Shaun Boland		5/01/2017			46	8.6	<5	
5 (Polishing Dam 3)	Shaun Boland		5/01/2017			N/A	N/A	N/A	
6 (North Sediment Dam 1)	Shaun Boland		5/01/2017			N/A	N/A	N/A	

Dust Deposition Gauge Monthly Monitoring

DDG 1 (Giles Road)						DDG 2 (Frount gate quarry)						DDG 3 (Cattle yard)					
Month and Year	Date data obtained	Total Insoluble Matter g/m2/month	Rolling Annual Average	M2 Air - Ash (gms/sqm/mth)	M2 Air - Combustable Material	Month and Year	Date data obtained	Total Insoluble Matter g/m2/month	Rolling Annual Average	M2 Air - Ash (gms/sqm/mth)	M2 Air - Combustable Material	Month and Year	Date data obtained	Total Insoluble Matter g/m2/month	Rolling Annual Average	M2 Air - Ash (gms/sqm/mth)	M2 Air - Combustable Material
2021																	
December 2021			0.7			December 2021			3.8			December 2021			2.63333333		
November 2021			0.7			November 2021			3.8			November 2021			2.63333333		
October 2021			0.9			October 2021		3.48571429				October 2021			2.5		
September 2021			1.1			September 2021		3.1375				September 2021			2.2		
August 2021			1.1			August 2021		3.7				August 2021			2.3		
July 2021			1.1			July 2021		3.5				July 2021			2.3		
			1.0					3.6							2.2		
June 2021	31/05/2021	0.5	1.0	0.4	0.1	June 2021	31/05/2021	1.4	3.4	0.9	0.5	June 2021	31/05/2021	4.7	2.0	0.9	3.8
May 2021	3/05/2021	0.6	1.0	0.2	0.4	May 2021	3/05/2021	4.5	3.5	1.4	3.1	May 2021	3/05/2021	3.6	1.7	1.5	2.1
April 2021	5/04/2021	0.6	1.0	0.4	0.2	April 2021	5/04/2021	0.4	3.2	0.2	0.2	April 2021	5/04/2021	0.8	1.4	0.4	0.4
March 2021	8/03/2021	0.7	1.0	0.3	0.4	March 2021	8/03/2021	1.3	5.4	1.0	0.3	March 2021	8/03/2021	2.1	1.8	1.4	0.7
February 2021	8/02/2021	1.2	1.1	0.4	0.8	February 2021	8/02/2021	1.6	5.5	0.7	0.9	February 2021	8/02/2021	3	1.8	1.9	1.1
January 2021	11/01/2021	0.8	1.18	0.3	0.5	January 2021	11/01/2021	13.6	5.7	9.0	4.6	January 2021	11/01/2021	1.6	1.7	0.7	0.9
2020																	
December 2020	14/12/2020	1.8	1.3	1.2	0.6	December 2020	14/12/2020	1.6	5.0	1.3	0.3	December 2020	14/12/2020	1.4	1.9	1	0.4
November 2020	16/11/2020	2.2	1.2	0.50	1.70	November 2020	16/11/2020	0.7	5.2	0.4	0.3	November 2020	16/11/2020	0.5	1.9	0.4	0.1
October 2020	19/10/2020	1.5	1.2	0.8	0.70	October 2020	19/10/2020	7.8	5.5	2.3	5.5	October 2020	19/10/2020	2.9	2.1	1.2	1.7
September 2020	21/09/2020	1	1.3	0.3	0.7	September 2020	21/09/2020	1.6	5.0	1.2	0.4	September 2020	21/09/2020	2.7	2.0	1.6	1.1
August 2020	24/08/2020	0.5	1.3	0.4	0.1	August 2020	24/08/2020	5.4	4.9	3.8	1.6	August 2020	24/08/2020	0.4	1.9	0.2	0.2
July 2020	27/07/2020	0.4	1.4	0.1	0.3	July 2020	27/07/2020	0.7	4.8	0.5	0.2	July 2020	27/07/2020	0.7	2.0	0.4	0.3
June 2020	29/06/2020	0.5	1.4	0.2	0.3	June 2020	29/06/2020	2.4	8.7	2.0	0.4	June 2020	29/06/2020	0.4	2.2	0.1	0.3
June 2020	1/06/2020	0.3	1.4	0.1	0.2	June 2020	1/06/2020	1.1	9.6	0.5	0.6	June 2020	1/06/2020	0.2	2.2	0.1	0.1
May 2020	4/05/2020	1.6	1.4	0.7	0.9	May 2020	4/05/2020	27.1	10.9	21.2	5.9	May 2020	4/05/2020	0.8	2.2	0.3	0.5
April 2020	6/04/2020	1	1.3	0.5	0.5	April 2020	6/04/2020	4.7	9.2	1.2	3.5	April 2020	6/04/2020	6.1	2.2	2.7	3.4
March 2020	9/03/2020	1.3	1.3	0.7	0.6	March 2020	9/03/2020	2.9	8.6	2.1	0.8	March 2020	9/03/2020	2.7	1.8	1.3	1.4
February 2020	10/02/2020	2.5	1.3	1.8	0.7	February 2020	10/02/2020	5	8.7	2.1	2.9	February 2020	10/02/2020	2	1.7	1.5	0.5
January 2020	13/01/2020	2.1	1.2	1.3	0.8	January 2020	13/01/2020	3.5	9.1	2.4	1.1	January 2020	13/01/2020	3.6	1.7	1.9	1.7
2019																	
December 2019	16/12/2019	1.9	1.1			December 2019	16/12/2019	4.2	9.6			December 2019	16/12/2019	2.8	1.6		
November 2019	18/11/2019	2	1.0			November 2019	18/11/2019	1.2	10.1			November 2019	18/11/2019	1.2	1.4		
October 2019	21/10/2019	1.4	1.1			October 2019	21/10/2019	0.7	10.0			October 2019	21/10/2019	2.2	1.4		
September 2019	23/09/2019	1.5	1.1			September 2019	23/09/2019	3.5	10.0			September 2019	23/09/2019	1.7	1.4		
August 2019	26/08/2019	1.1	1.0			August 2019	26/08/2019	47.5	9.8			August 2019	26/08/2019	2.2	1.3		
July 2019	29/07/2019	0.2	0.9			July 2019	29/07/2019	14.1	5.6			July 2019	29/07/2019	0.3	1.2		
June 2019	28/06/2019	0.5	0.9			June 2019	28/06/2019	16.8	4.6			June 2019	28/06/2019	0.8	1.5		
May 2019	31/05/2019	0.6	0.9			May 2019	31/05/2019	5.8	3.1			May 2019	31/05/2019	0.8	1.6		
April 2019	5/05/2019	0.5	0.9			April 2019	5/05/2019	2.7	2.9			April 2019	5/05/2019	1.5	1.8		
March 2019	5/04/2019	1.2	0.9			March 2019	5/04/2019	4.2	2.8			March 2019	5/04/2019	2.1	1.8		
February 2019	6/03/2019	1.6	0.9			February 2019	6/03/2019	4.4	2.5			February 2019	6/03/2019	0.9	1.6		
January 2019	6/02/2019	0.7	0.8			January 2019	6/02/2019	10.1	2.1			January 2019	6/02/2019	2.2	1.6		
2018																	
December 2018	12/12/2018 & 9/01/2019	1.3, 2.4	0.8			December 2018	12/12/2018 & 9/01/2019	0.8, 2.3	1.4			December 2018	12/12/2018 & 9/01/2019	2.8, 2.7	1.5		
November 2018	14/11/2018	3	0.9			November 2018	14/11/2018	0.6	1.4			November 2018	14/11/2018	0.2	1.6		
October 2018	17/10/2018	0.8	0.7			October 2018	17/10/2018	0.7	5.5			October 2018	17/10/2018	2.5	1.7		
September 2018	19/09/2018	0.8	0.7			September 2018	19/09/2018	0.7	1.6			September 2018	19/09/2018	0.8	1.5		
August 2018	22/08/2018	0.5	0.7			August 2018	22/08/2018	1	1.7			August 2018	22/08/2018	1.6	1.6		
July 2018	25/07/2018	0.2	0.7			July 2018	25/07/2018	3.8	1.6			July 2018	25/07/2018	2.6	1.6		

June 2018	27/06/2018	0.2	0.7		June 2018	27/06/2018	0.4	1.7		June 2018	27/06/2018	2.8	1.5	
May 2018	30/05/2018	0.4	0.7		May 2018	30/05/2018	3	1.8		May 2018	30/05/2018	2.7	1.3	
April 2018	2/05/2018	0.6	0.8		April 2018	2/05/2018	1.7	1.7		April 2018	2/05/2018	0.9	1.2	
March 2018	4/04/2018	0.9	0.8		March 2018	4/04/2018	0.9	1.6		March 2018	4/04/2018	0.8	1.4	
February 2018	7/03/2018	0.9	0.8		February 2018	7/03/2018	0.7	1.6		February 2018	7/03/2018	0.8	1.9	
January 2018	7/02/2018	0.6	0.8		January 2018	7/02/2018	1.7	1.7		January 2018	7/02/2018	0.3	2.1	
2017														
December 2017	10/01/2018	1.7	0.8		December 2017	10/01/2018	2	1.7		December 2017	10/01/2018	2.8	2.3	
November 2017			0.7		November 2017			1.6		November 2017			2.3	
October 2017	18/10/2017	0.6	0.7		October 2017	18/10/2017	1.5	1.6		October 2017	18/10/2017	0.7	2.3	
September 2017	20/09/2017	0.6	0.7		September 2017	20/09/2017	1.7	1.6		September 2017	20/09/2017	1.2	2.5	
August 2017	23/08/2017	0.5	0.8		August 2017	23/08/2017	0.7	1.6		August 2017	23/08/2017	1.7	2.6	
July 2017	26/07/2017	0.4	0.7		July 2017	26/07/2017	4.5	1.6		July 2017	26/07/2017	1.6	2.7	
June 2017	28/06/2017	1	0.7		June 2017	28/06/2017	1.3	1.1		June 2017	28/07/2017	1.2	2.6	
May 2017	31/05/2017, 12/4	0.6, 07	0.6		May 2017	31/05/2017, 12/0	3.4, 09	1.1		May 2017	31/05/2017, 12/4	2.1, 3.9	2.5	
April 2017	5/04/2017	0.5	0.6		April 2017	5/04/2017	1	1.0		April 2017	5/04/2017	3.1	2.4	
March 2017	7/03/2017	1.5	0.6		March 2017	7/03/2017	1.1	1.0		March 2017	7/03/2017	5.1	2.3	
February 2017	3/02/2017	0.9	0.5		February 2017	3/02/2017	1.4	0.9		February 2017	3/02/2017	3.4	1.9	
January 2017	5/01/2017	0.5	0.5		January 2017	5/01/2017	1.4	0.8		January 2017	5/01/2017	2.3	1.6	
2016														
December 2016			0.4		December 2016			0.7		December 2016			1.6	
November 2016			0.4		November 2016			0.7		November 2016			1.6	
October 2016			0.4		October 2016			0.7		October 2016			1.6	
September 2016			0.4		September 2016			0.7		September 2016			1.6	
August 2016	10/08/2016	0.2	0.4		August 2016	10/08/2016	0.4	0.7		August 2016	10/08/2016	2.1	1.6	
July 2016	11/07/2016	0.4	0.5		July 2016	11/07/2016	1.3	0.8		July 2016	11/07/2016	1.2	1.6	
June 2016	9/06/2016	0.2	0.5		June 2016	9/06/2016	0.9	0.7		June 2016	9/06/2016	0.1	1.6	
May 2016	12/05/2016	0.3	0.5		May 2016	12/05/2016	0.8	0.6		May 2016	12/05/2016	2.1	1.9	
April 2016	12/04/2016	0.9	0.6		April 2016	12/04/2016	0.6	0.6		April 2016	12/04/2016	2.4	1.9	
March 2016	15/03/2016	0.6	0.5		March 2016	15/03/2016	0.7	0.6		March 2016	15/03/2016	1.7	1.7	
February 2016	15/02/2016	0.5	0.4		February 2016	15/02/2016	0.6	0.6		February 2016	15/02/2016	0.7	1.8	
January 2016	14/01/2016	0.3	0.3		January 2016	14/01/2016	0.5	0.5		January 2016	14/01/2016	2.8	2.8	

Blast Monitoring

Date	Time	Blast Location	Blast #	Monitor Location	Air Blast dBL	Ground Vibration (m/s)	Comment
2021							
8/06/2021	14:23pm	Drop cut	2107	Brandy Hill Dr- Closest Neighbour (4387) Quarry Driveway (4111)	nil trigger 109.2	nil trigger 0.74	
17/05/2021	13:04pm	Drop cut	2106	Brandy Hill Dr- Closest Neighbour Quarry Driveway	nil trigger 108.7	nil trigger 0.61	
20/04/2021	12:27pm	Drop cut	2105	Brandy Hill Dr- Closest Neighbour (4387) Quarry Driveway (4111)	nil trigger 109.3	nil trigger 0.59	
16/03/2021	12:24pm	Drop cut	2104	3 Giles Rd, Brandy Hill- 32 65946137445706, 151.66 Brandy Hill Dr- Closest Neighbour Quarry Driveway	nil trigger nil trigger 101.8	nil trigger nil trigger 0.85	
24/02/2021	13:18pm	Drop cut	2103	Brandy Hill Dr- Closest Neighbour (4387) Quarry Driveway (4111)	nil trigger 111	nil trigger 0.60	
8/02/2021	12:11pm	Drop cut	2102	Brandy Hill Dr- Closest Neighbour Quarry Driveway	nil trigger 104.8	nil trigger 0.69	
27/01/2021	11:34 AM	Old haul road	2101	Brandy Hill Dr- Closest Neighbour (4387) Quarry Driveway (4111)	nil trigger 111.5	nil trigger 0.39	
2020							
26/11/2020	11:36am	Old haul road	2017	Brandy Hill Dr- Closest Neighbour Quarry Driveway	nil trigger 102.1	nil trigger 0.79	
24/11/2020	10:38am	Floor 2	2018	Brandy Hill Dr- Closest Neighbour (4387) Quarry Driveway (4111)	nil trigger nil trigger	nil trigger nil trigger	
6/11/2020	12:09 PM	Drop Cut	2016	Brandy Hill Dr- Closest Neighbour Quarry Driveway	nil trigger 98.1	nil trigger 0.43	
19/10/2020	10:46 AM	Floor 1	2015	Brandy Hill Dr- Closest Neighbour (4387) Quarry Driveway (4111)	nil trigger 101.4	nil trigger 0.82	
17/09/2020	12:09 PM	Floor 1	2014	1 Giles Road, Brandy Hill. E374359. N 6385578 Quarry Driveway	nil trigger 108.4	nil trigger 0.47	
24/08/2020	2:04 PM	Floor 1	2013	Brandy Hill Dr- Closest Neighbour (4387) Quarry Driveway (4111)	nil trigger 110.3	nil trigger 0.5	
17/08/2020	11:18 AM	Floor 2	2012	Mooghin Road, Seaham. E378864. N 6385463 Quarry Driveway (4111)	nil trigger 108	nil trigger 0.28	
4/08/2020	3:10 PM	Floor 2	2011-2	Brandy Hill Dr- Closest Neighbour (4387) Quarry Driveway (4111)	nil trigger 115	nil trigger 2.65	
27/07/2020	9:47 AM	Floor 1	2011-1	Brandy Hill Dr- Closest Neighbour (4387) Quarry Driveway (4111)	nil trigger 109.6	nil trigger 0.52	
1/07/2020	12:14 PM	Floor 1	2010	Brandy Hill Dr- Closest Neighbour Quarry Driveway	nil trigger 104.2	nil trigger 0.5	
16/06/2020	3:42 PM	Drop Cut	2009	Brandy Hill Dr- Closest Neighbour Quarry Driveway	nil trigger 98.4	nil trigger 0.25	
18/05/2020	1:21 PM	Floor 2	2008	Brandy Hill Dr- Closest Neighbour Quarry Driveway	nil trigger 112.8	nil trigger 0.73	
14/04/2020	4:33 PM	Floor 2	2007	Brandy Hill Dr- Closest Neighbour Quarry Driveway	nil trigger 111.4	nil trigger 0.6	
24/03/2020	1:42 PM	Floor 2 & 3	2005 & 2006	Brandy Hill Dr- Closest Neighbour Quarry Driveway	nil trigger 110.1	nil trigger 0.52	
9/03/2020	4:09 PM	Floor 1	2004	Brandy Hill Dr- Closest Neighbour Quarry Driveway	nil trigger 107.8	nil trigger 0.32	
25/02/2020	12:40 PM	Floor 3	2003	Brandy Hill Dr- Closest Neighbour Quarry Driveway	nil trigger 106	nil trigger 0.42	
10/02/2020	12:32 PM	Floor 1 & 2	2001 & 2002	Brandy Hill Dr- Closest Neighbour Quarry Driveway	nil trigger 104.7	nil trigger 0.63	
20/01/2020	12:18 PM	Floor 2	1918	Brandy Hill Dr- Closest Neighbour Quarry Driveway	nil trigger 106.9	nil trigger 1.03	
2019							
17/12/2019	11:10 AM	Floor 3	1917	Brandy Hill Dr- Closest Neighbour Quarry Driveway	nil trigger nil trigger	nil trigger nil trigger	
22/11/2019	1:40 PM	Floor 1 + ramp	1916	Brandy Hill Dr- Closest Neighbour Quarry Driveway	nil trigger 100.9	nil trigger 0.4	Production shot grey rock
4/11/2019	3:35 PM	Drop Cut	1915	Brandy Hill Dr- Closest Neighbour Quarry Driveway	nil trigger 102.8	nil trigger 0.7	New sump for de-water pump
22/10/2019	12:31 PM	Floor 1	1914	Brandy Hill Dr- Closest Neighbour Quarry Driveway	nil trigger 85.3	nil trigger 0.5	Production shot. Grey rock.
4/10/2019	12:03 PM	Floor 1	1913	Brandy Hill Dr- Closest Neighbour Quarry Driveway	nil trigger 102.2	nil trigger 0.6	Production shot grey/pink rock
12/09/2019	2:20 PM	Floor 1	1912	Brandy Hill Dr- Closest Neighbour Quarry Driveway	nil trigger 112.6	nil trigger 0.31	Production shot good grey/blue rock.
29/07/2019	2:10 PM	Floor 2 & Floor 1	1909/1911	Brandy Hill Dr- Closest Neighbour Quarry Driveway	nil trigger 114.4	nil trigger 1	Two shots fired together over top of each other.
5/07/2019	12:31 PM	Floor 1	1910	Brandy Hill Dr- Closest Neighbour Quarry Driveway	nil trigger 107.2	nil trigger 0.3	Small production blast all went well
17/06/2019	3:00 PM	Floor 2	1908	Brandy Hill Dr- Closest Neighbour Quarry Driveway	nil trigger 112.5	nil trigger 1.4	Production shot Pink/grey
27/05/2019	12:05 PM	Floor 1	1907	Brandy Hill Drive - Closest Neighbour Quarry Driveway	nil trigger 114.2	nil trigger 0.4	Small production blast all went well
20/05/2019	10:32 AM	Floor 1	1906	Brandy Hill Dr- Closest Neighbour Quarry Driveway	nil trigger 106.1	nil trigger 0.25	Small production blast all went well
7/05/2019	11:00 AM	Floor 1	1905	Brandy Hill Dr- Closest Neighbour Quarry Driveway	nil trigger nil trigger	nil trigger nil trigger	Small shot, all went very well
23/04/2019	1:29 PM	Floor 5	1903	Brandy Hill Dr- Closest Neighbour Quarry Driveway	nil trigger 104.1	nil trigger 0.4	Went very well no problems
4/04/2019	12:16 PM	Floor 1	1904	Brandy Hill Dr- Closest Neighbour Quarry Driveway	nil trigger 103	nil trigger 0.5	Went very well no problems
20/03/2019	11:59 AM	Floor 1	1902	Brandy Hill Dr- Closest Neighbour Quarry Driveway	nil trigger 104.8	nil trigger 0.4	Went very well no problems
27/02/2019	12:29 PM	Floor 1	1901	Brandy Hill Dr- Closest Neighbour Quarry Driveway	nil trigger 97.3	nil trigger 0.9	Went very well no problems

2018							
17/12/2018	3:57 PM	Floor 2 south side corner	1810	Brandy Hill Dr -Closest Neighbour	87	0.73	Went well, very good fragmentation
				Quarry driveway	105.9	1.12	
				Brandy Hill Dr -Closest Neighbour	104.5	0.7	
8/11/2018	1:03 PM	Floor 2 south side	1809	Quarry driveway	110.3	1.06	Large shot 109000 tons all went to plan
				Brandy Hill Dr -Closest Neighbour	90.5	0.34	
2/10/2018	11:40 AM	Floor 4	1808	Quarry driveway	103.8	0.3	Went very well.
				Brandy Hill Dr -Closest Neighbour	nil trigger	nil trigger	
10/09/2018	1:06 PM	Floor 1	1807	Quarry driveway	nil trigger	nil trigger	Went very well no problems
22/08/2018	1:44 PM	Floor 1	1806	Brandy Hill Dr -Closest Neighbour	90.5	0.24	Went well no problems.
30/07/2018	3:41 PM	Floor 2	1805	Brandy Hill Dr -Closest Neighbour	nil trigger	nil trigger	Went well no problems.
21/06/2018	12:00 PM	Floor 1	1804	Brandy Hill Dr -Closest Neighbour	97.1	0.61	Went well no problems.
22/05/2018	3:14 PM	Floor 1	1803	Brandy Hill Dr -Closest Neighbour	108.1	0.33	Went well no problems.
12/04/2018	12:04 PM	Floor 4	1802	Brandy Hill Dr -Closest Neighbour	74.7	0.6	Went well no problems.
16/03/2018	1:39 PM	Floor 1	1801	Brandy Hill Dr -Closest Neighbour	99.4	0.4	Went well good fragmentation and muck pile.
16/02/2018	3:18 PM	Floor 2	1723	Brandy Hill Dr -Closest Neighbour	102.3	0.5	Went very well, some over size cap rock on top.
2017							
19/12/2017	3:16 PM	Floor 1	1722	Brandy Hill Dr -Closest Neighbour	95.6	0.33	Went well good fragmentation.
28/11/2017	1:28 PM	Floor 1	1721	Brandy Hill Dr -Closest Neighbour	nil trigger	nil trigger	All went very well.
27/10/2017	2:02 PM	Floor 2	1720	Brandy Hill Dr -Closest Neighbour	110.1	0.66	All went very well.
19/10/2017	10:44 AM	Floor 3	1717	Brandy Hill Dr -Closest Neighbour	nil trigger	nil trigger	Shot went well. Some contamination/ash.
9/10/2017	10:35 AM	Drop cut	1719	Brandy Hill Dr -Closest Neighbour	nil trigger	nil trigger	All went well. Good fragmentation
28/09/2017	11:10 AM	Drop cut	1718	Brandy Hill Dr -Closest Neighbour	nil trigger	nil trigger	Down load front, need oversize came out well.
14/09/2017	3:15 PM	Floor 1	1716	Brandy Hill Dr -Closest Neighbour	111.7	0.43	Windy when fired, came out well.
24/08/2017	4:31 PM	Floor 2	1715	Brandy Hill Dr -Closest Neighbour	97.5	1.3	Large shot 79990tons designed over size on front.
15/08/2017	2:43 PM	Floor 1	1714	Brandy Hill Dr -Closest Neighbour	108.8	0.47	All went well. Well fragmented.
2/08/2017	12:56 PM	Floor 3	1711	Brandy Hill Dr -Closest Neighbour	104.1	0.35	Came out well, some back break
20/07/2017	11:25 AM	Drop cut	1713	Brandy Hill Dr -Closest Neighbour	101.3	0.3	All went well.
6/07/2017	11:40 AM	Floor 2	1712	Brandy Hill Dr -Closest Neighbour	84.1	0.44	All went well.
15/06/2017	2:47 PM	Floor 1	1710	Brandy Hill Dr -Closest Neighbour	nil trigger	nil trigger	All went well.
30/05/2017	11:08 AM	Floor 2	1709	Brandy Hill Dr -Closest Neighbour	101.6	0.72	All went well.
11/05/2017	2:02 PM	Floor 1	1708	Brandy Hill Dr -Closest Neighbour	96.6	0.46	Large shot all went well 46000tons
29/04/2017	10:19 AM	Floor 2	1707	Brandy Hill Dr -Closest Neighbour	103.1	1.14	All went well.
7/04/2017	10:15 AM	Floor 2	1706	Brandy Hill Dr -Closest Neighbour	nil trigger	nil trigger	All went well.
27/03/2017	11:11 AM	Floor 1 south side of pit	1705	Brandy Hill Dr -Closest Neighbour	nil trigger	nil trigger	Fine and sunny, went well.
10/03/2017	11:00 AM	Floor 2 south side	1704	Brandy Hill Dr -Closest Neighbour	97.5	0.56	Overcast day, all went well.
1/03/2017	11:58 AM	Floor 1	1703	Brandy Hill Dr -Closest Neighbour	nil trig	nil trig	
17/02/2017	10:42 AM	Floor 2 south side	1702	Brandy Hill Dr -Closest Neighbour	nil trigger	nil trigger	Hot day, overcast with a scattered shower
2/02/2017	9:57 AM	Floor 1 drop cut north side	1701	Brandy Hill Dr -Closest Neighbour	nil trigger	nil trigger	Hot day slightly overcast, all went well.
19/01/2017	11:19 AM	Floor 2 south side	1623	Brandy Hill Dr -Closest Neighbour	103.8	0.5	Overcast
2016							
15/12/2016	9:42 AM	Floor 1 drop cut	1622	Brandy Hill Dr -Closest Neighbour	nil trigger	nil trigger	
1/12/2016	10:35 AM	Floor 1 drop cut	1620	Brandy Hill Dr -Closest Neighbour	nil trigger	nil trigger	
21/11/2016	10:07 AM	Floor 2	1619	Brandy Hill Dr -Closest Neighbour	nil trigger	nil trigger	
2/11/2016	11:03 AM	Floor 1 drop cut	1618	Brandy Hill Dr -Closest Neighbour	nil trigger	nil trigger	
19/10/2016	10:11 AM	Floor 1 drop cut	1617	Brandy Hill Dr -Closest Neighbour	nil trigger	nil trigger	
5/10/2016	12:23 PM	Floor 2	1616	Brandy Hill Dr -Closest Neighbour	112.4	0.8	
22/09/2016	11:23 AM	Floor 3 Development area	1615	Brandy Hill Dr -Closest Neighbour	nil trigger	nil trigger	
8/09/2016	11:09 AM	Floor 1 D/Cut	1614	Brandy Hill Dr -Closest Neighbour	nil trigger	nil trigger	
25/08/2016	11:33 AM	Floor 2	1613	Brandy Hill Dr -Closest Neighbour	100.7	0.5	
11/08/2016	12:05 PM	Floor 2	1612	Brandy Hill Dr -Closest Neighbour	nil trigger	nil trigger	
26/07/2016	1:00 PM	Floor 3 Development area	1611	Brandy Hill Dr -Closest Neighbour	nil trigger	nil trigger	
14/07/2016			1610	Brandy Hill Dr -Closest Neighbour			
9/06/2016	12:49 PM	Floor 3 Development	1609	Brandy Hill Dr -Closest Neighbour	nil trigger	nil trigger	
24/05/2016	10:29 AM	Floor 1 D/Cut	1608	Brandy Hill Dr -Closest Neighbour	nil trigger	nil trigger	
17/05/2016	10:40 AM	Floor 2	1607	Brandy Hill Dr -Closest Neighbour	102.5	0.5	
29/04/2016	1:04 PM	Floor 1 D/Cut	1606	Brandy Hill Dr -Closest Neighbour	103.8	0.5	
20/04/2016	2:32 PM	Floor 2	1605	Brandy Hill Dr -Closest Neighbour	98.6	0.5	
7/04/2016	10:10 AM	Floor 3 Development	1604	Brandy Hill Dr -Closest Neighbour	nil trigger	nil trigger	
23/03/2016	2:22 PM	Floor 2	1603	Brandy Hill Dr -Closest Neighbour	102.1	0.4	
9/03/2016	1:04 PM	Floor 2	1602	Brandy Hill Dr -Closest Neighbour	102.9	1.6	
24/02/2016	11:41 AM	Floor 3	1601	Brandy Hill Dr -Closest Neighbour	102.9	0.4	
27/01/2016	12:00 AM	Floor 2	1530	Brandy Hill Dr -Closest Neighbour	112	0.2	
13/01/2016	10:05 AM	Floor 3	1529	Brandy Hill Dr -Closest Neighbour	nil trigger	nil trigger	
2015							
10/12/2015	2:53 PM	Floor 2	1528	Brandy Hill Dr -Closest Neighbour	105.7	0.7	
10/12/2015	2:52 PM	Floor 2	1527	Brandy Hill Dr -Closest Neighbour	105.7	0.7	Shot 1527 & 1528 tied in and fired together.
25/11/2015	10:35 AM	Floor 2	1526	Brandy Hill Dr -Closest Neighbour	102.9	1.22	
11/11/2015	10:17 AM	Floor 3 Devel	1525	Brandy Hill Dr -Closest Neighbour	nil trigger	nil trigger	
30/10/2015	1:06 PM	Floor 2 south	1523	Brandy Hill Dr -Closest Neighbour	102.9	0.73	
16/10/2015	10:41 AM	Drop cut	1522	Brandy Hill Dr -Closest Neighbour	101.5	0.29	
16/10/2015	10:42 AM	Floor 3 Devel	1521	Brandy Hill Dr -Closest Neighbour	nil trigger	nil trigger	
2/10/2015	11:40 AM	Floor 2	1520	Brandy Hill Dr -Closest Neighbour	nil trigger	nil trigger	
18/09/2015	10:58 AM	Floor 1 D/Cut	1519	Brandy Hill Dr -Closest Neighbour	103.1	0.51	
8/09/2015	12:47 PM	Floor 2	1517	Brandy Hill Dr -Closest Neighbour	97.3	0.51	
1/09/2015	10:07 AM	Floor 1 D/Cut	1518	Brandy Hill Dr -Closest Neighbour	nil trigger	nil trigger	
7/08/2015	10:56 AM	Floor 1 D/Cut	1516	Brandy Hill Dr -Closest Neighbour	100	0.31	
24/07/2015	10:27 AM	Floor 1 D/Cut	1515	Brandy Hill Dr -Closest Neighbour	108.5	0.2	
15/07/2015	10:51 AM	Floor 1 D/Cut	1514	Quarry Driveway	103.8	0.28	
3/07/2015	11:10 AM	Floor 1 D/Cut	1513	Brandy Hill Dr -Closest Neighbour	nil trigger	nil trigger	
19/06/2015	9:28 AM	Floor 2	1512	Brandy Hill Dr -Closest Neighbour	nil trigger	nil trigger	
5/06/2015	10:56 AM	Drop cut	1509	Brandy Hill Dr -Closest Neighbour	101.3	0.3	
29/05/2015	11:07 AM	Floor 3 haul R	1511	Brandy Hill Dr -Closest Neighbour	101.3	1.16	
7/05/2015	9:57 AM	Floor 3 haul R	1510	Brandy Hill Dr -Closest Neighbour	99.4	3.01	
10/04/2015	11:39 AM	Floor 3 haul R	1508	Brandy Hill Dr -Closest Neighbour	101.7	0.65	
27/03/2015	11:23 AM	Drop cut	1507	Brandy Hill Dr -Closest Neighbour	98.2	0.22	
11/03/2015	11:02 AM	Drop Cut/trim	1506	Brandy Hill Dr -Closest Neighbour	102.6	0.65	
27/02/2015	10:11 AM	Drop cut	1504	Brandy Hill Dr -Closest Neighbour	94.6	0.6	
20/02/2015	9:37 AM	Floor 3	1505	Brandy Hill Dr -Closest Neighbour	100.1	0.58	
3/02/2015	10:48 AM	Drop cut	1503	Brandy Hill Dr -Closest Neighbour	101.8	0.61	
16/01/2015	9:40 AM	Floor 2	1502	Brandy Hill Dr -Closest Neighbour	98	0.55	
16/01/2015	10:03 AM	Floor 3.	1501	Quarry Driveway	102.3	0.54	

Summary of Noise Monitoring 1 & 2 April 2020

Location and Period	Noise limits in dB(A)		Estimated site contribution dB(A)		Compliant?
	<i>Laeq, 15 min</i>	<i>LA1, 1min</i>	<i>Laeq, 15 min</i>	<i>LA1, 1min</i>	
R1 (Giles Road) – Day	36	N/A	<35	N/A	Yes
R1 (Giles Road) – Evening	36	N/A	<35	N/A	Yes
R1 (Giles Road) – Night	36	45	35	<45	Yes
R2 (Brandy Hill Drive) - Day	36	N/A	Inaudible	N/A	Yes
R2 (Brandy Hill Drive) - Evening	36	N/A	Inaudible	N/A	Yes
R2 (Brandy Hill Drive) - Night	36	45	Inaudible	Inaudible	Yes
R3 (Mooghin Road) - Day	36	N/A	Inaudible	N/A	Yes
R3 (Mooghin Road) - Evening	36	N/A	Inaudible	N/A	Yes
R3 (Mooghin Road) - Night	36	45	Inaudible	Inaudible	Yes

Summary of Noise Monitoring 12 & 15 April 2019

Location and Period	Criteria Level (dBA)		Estimated site contribution (dBA)		Compliant?
	<i>Laeq, 15 min</i>	<i>LA1, 1min</i>	<i>Laeq, 15 min</i>	<i>LA1, 1 min</i>	
R1 (Giles Road) – Day	36	N/A	Not Audible	Not Applicable	yes
R1 (Giles Road) – Evening	36	N/A	Not Audible	Not Applicable	Yes
R1 (Giles Road) – Night	45	45	Not Audible	Not Applicable	yes
R2 (Brandy Hill Drive) - Day	36	N/A	Not Audible	Not Applicable	yes
R2 (Brandy Hill Drive) - Evening	36	N/A	Not Audible	Not Applicable	yes
R2 (Brandy Hill Drive) - Night	45	45	Not Audible	Not Applicable	yes
R3 (Mooghin Road) - Day	36	N/A	<30	Not Applicable	yes
R3 (Mooghin Road) - Evening	36	N/A	Not Audible	Not Applicable	yes
R3 (Mooghin Road) - Night	45	45	<30	35	yes

Summary of Noise Monitoring 11 & 19 April 2018

Location and Period	Criteria Level (dBA)		Measured noise levels (dBA)			Estimated site contribution (dBA)		Compliant?
	<i>Laeq, 15 min</i>	<i>LA1, 1min</i>	<i>LA90 (15min)</i>	<i>Laeq (15min)</i>	<i>LA1 (1min)</i>	<i>Laeq, 15 min</i>	<i>LA1, 1 min</i>	
R1 (Giles Road) – Night	36	45	36	47	67	<26	44	Yes
R1 (Giles Road) – Day	36	N/A	34	42	57	<28	N/A	Yes
R2 (Brandy Hill Drive) - Night	36	45	44	56	82	<30	N/A	Yes
R2 (Brandy Hill Drive) - Day	36	N/A	44	66	83	<30	N/A	Yes
R3 (Mooghin Road) - Night	36	45	30	42	64	<13	N/A	Yes
R3 (Mooghin Road) - Day	36	N/A	31	41	61	<10	30	Yes

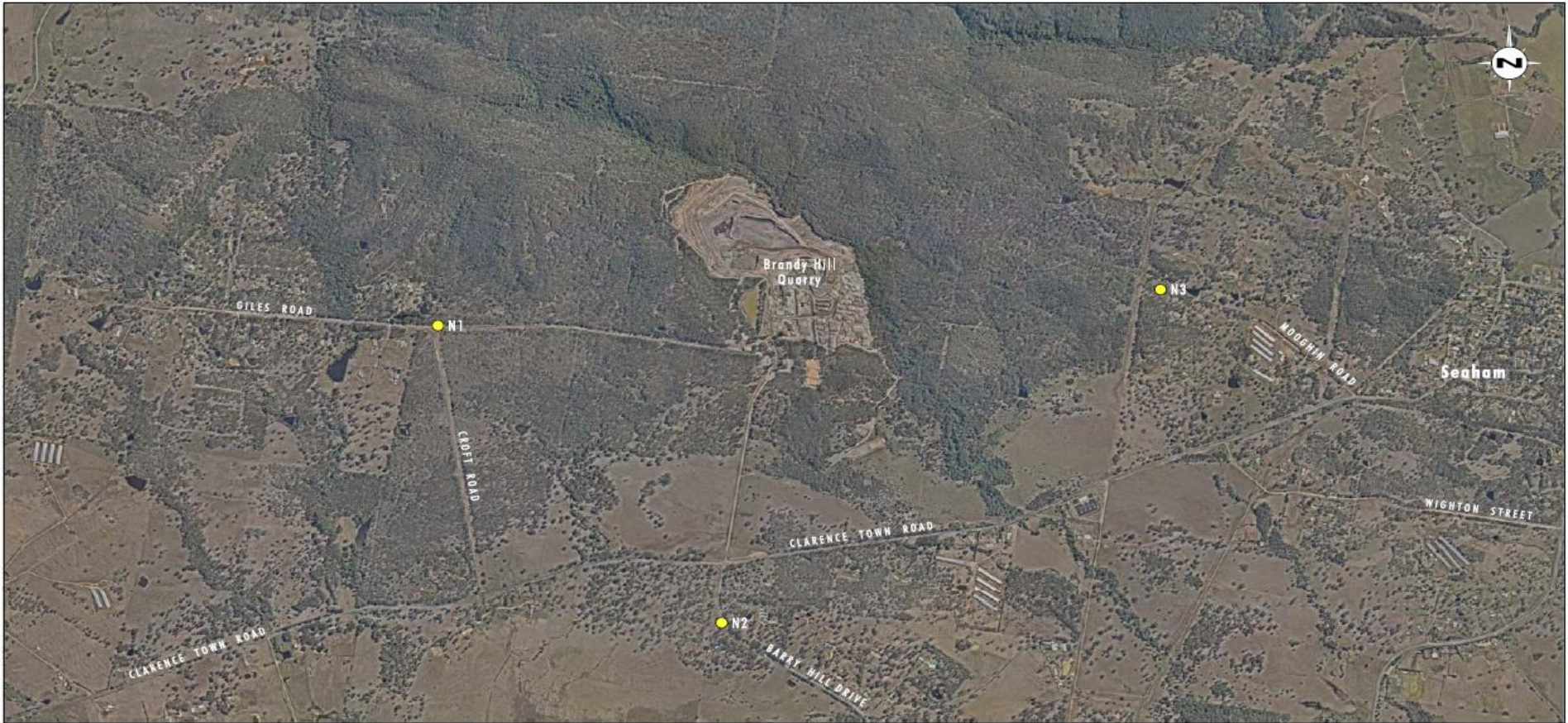


Image Source: Nearmap (Feb 2018)

0 0.5 1.0 1.25 km
1:25 000

Legend
 ● Noise Monitoring Location

FIGURE 1.2
Noise Monitoring Locations