



East Guyong Quarry

2020 Dust Deposition Monitoring

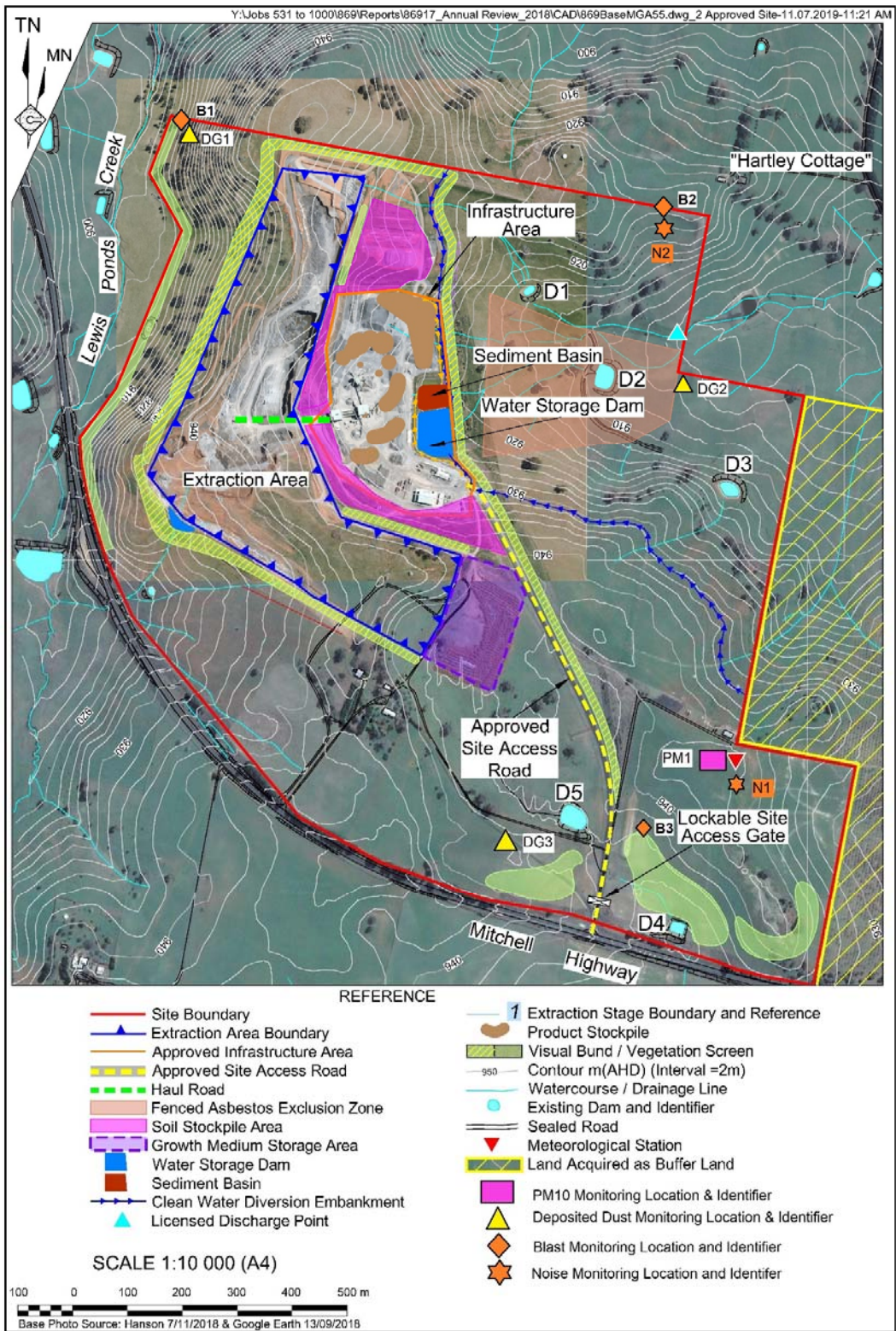


Figure 1: Monitoring locations – East Guyong Quarry (g/m²/month) (2019)

Table 1: Monthly Total Insoluble Matter ($\text{g}/\text{m}^2/\text{month}$) measured for Dust Deposition Gauge 1 during 2020 and calculated rolling annual average Total Insoluble Matter ($\text{g}/\text{m}^2/\text{month}$).

Month and Year	Total Insoluble Matter	Rolling Annual Average	Comments
January 2020	0.7	2.1	
February 2020	7	2.6	Drought /windy conditions and bushfires causing poor AQ in the area
March 2020	8.1	3.1	Drought /windy conditions and bushfires causing poor AQ in the area
April 2020	1.2	3.1	
May 2020	0.6	2.9	
June 2020	1.0	3.1	
July 2020	0.2	2.8	
August 2020	0.1	2.7	
September 2020	0.6	2.7	
October 2020	0.4	2.3	
November 2020	0.7	2.1	
December 2020	0.9	1.8	

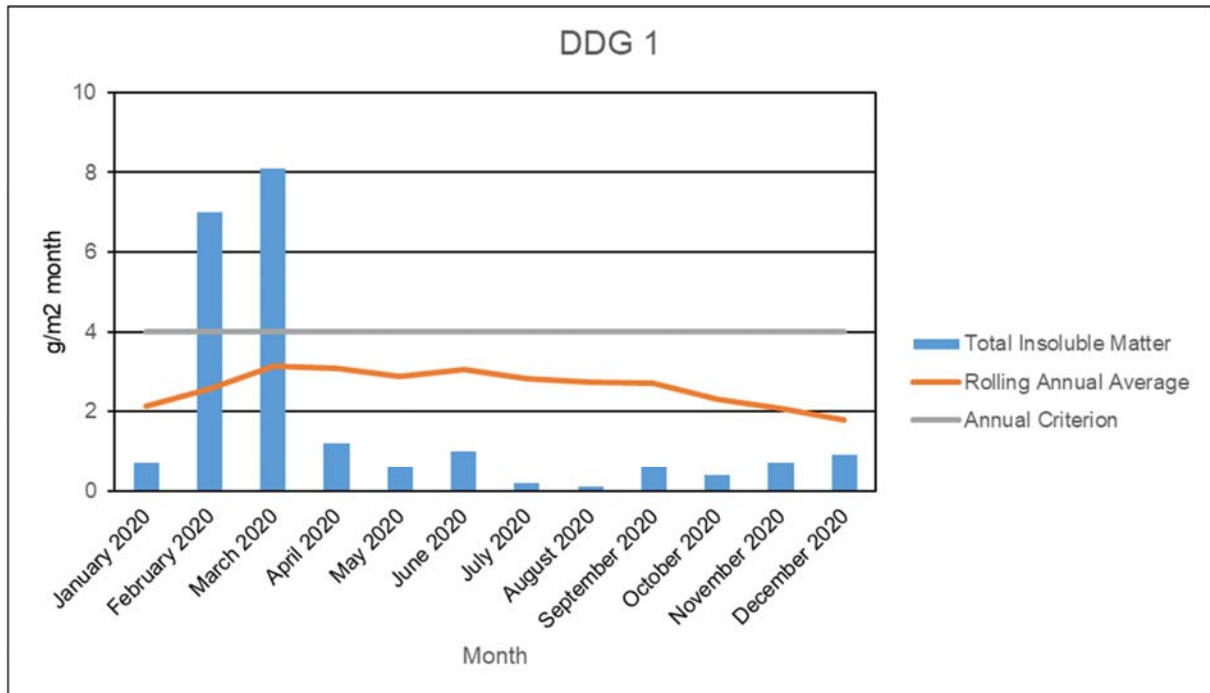


Figure 2: Total Insoluble Matter, rolling annual average, and annual criterion ($\text{g}/\text{m}^2/\text{month}$) for the East Guyong Quarry as measured at DDG-1 during 2020.

Table 2: Monthly Total Insoluble Matter (g/m² month) measured for Dust Deposition Gauge 2 during 2020 and calculated rolling annual average Total Insoluble Matter (g/m² month).

Month and Year	Total Insoluble Matter	Rolling Annual Average	Comments
January 2020	1.9	3.7	
February 2020	5.0	3.9	Drought /windy conditions and bushfires causing poor AQ in the area
March 2020	7.5	4.5	Drought /windy conditions and bushfires causing poor AQ in the area
April 2020	1.8	4.5	
May 2020	7.4	5.0	Drought /windy conditions causing poor AQ in the area
June 2020	0.5	5.3	
July 2020	0.3	4.9	
August 2020	0.7	3.2	
September 2020	0.8	3.2	
October 2020	0.6	3.0	
November 2020	0.5	2.7	
December 2020	5.9	2.7	

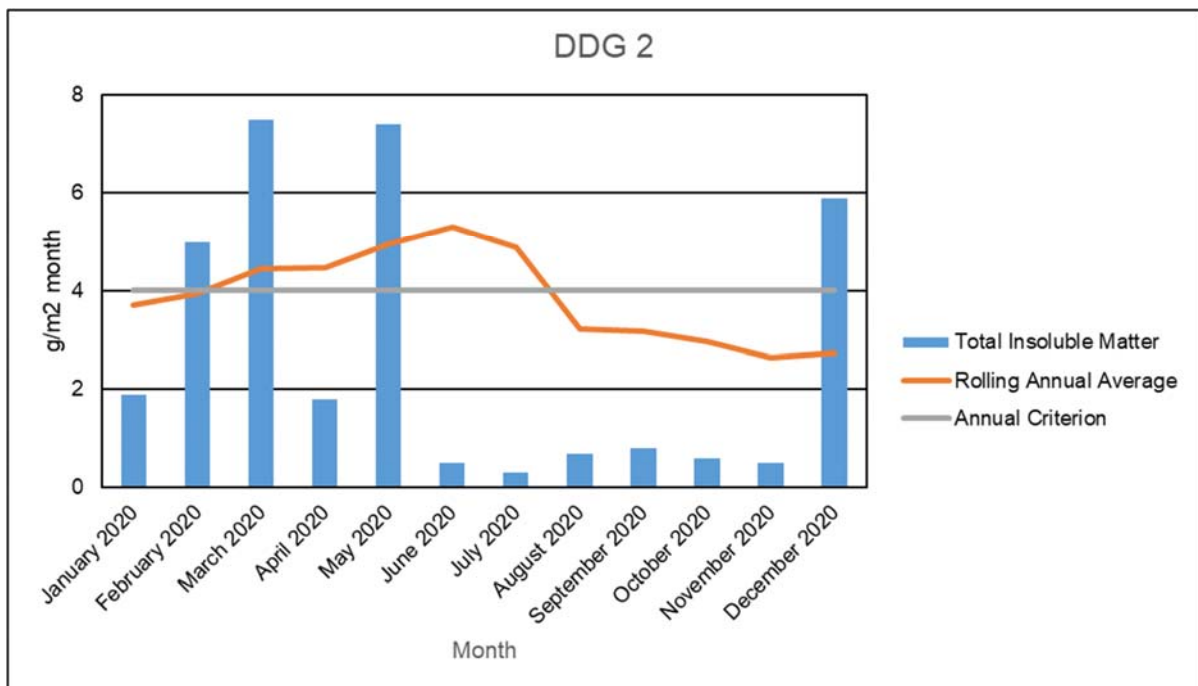


Figure 3: Total Insoluble Matter, rolling annual average, and annual criterion (g/m²/month) for the East Guyong Quarry as measured at DDG-2 during 2020.

Table 3: Monthly Total Insoluble Matter ($\text{g}/\text{m}^2/\text{month}$) measured for Dust Deposition Gauge 3 during 2020 and calculated rolling annual average Total Insoluble Matter ($\text{g}/\text{m}^2/\text{month}$).

Month and Year	Total Insoluble Matter	Rolling Annual Average	Comments
January 2020	1.8	3.5	
February 2020	7	3.9	Drought /windy conditions and bushfires causing poor AQ in the area
March 2020	7.9	4.4	Drought /windy conditions and bushfires causing poor AQ in the area
April 2020	1.4	4.4	
May 2020	6.1	4.6	Drought /windy conditions causing poor AQ in the area
June 2020	1.7	5.0	
July 2020	3.1	4.8	
August 2020	1.2	4.4	
September 2020	1.6	3.9	
October 2020	0.6	3.4	
November 2020	3.5	3.4	
December 2020	1.9	3.2	

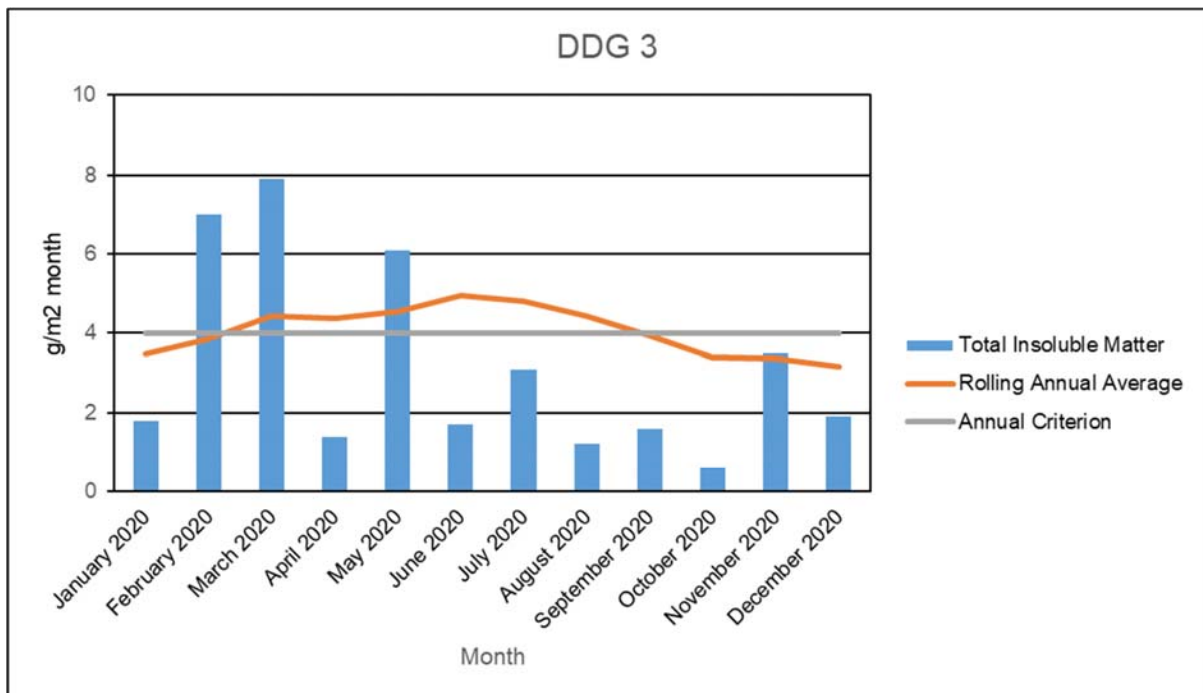


Figure 4: Total Insoluble Matter, rolling annual average, and annual criterion ($\text{g}/\text{m}^2/\text{month}$) for the East Guyong Quarry as measured at DDG-3 during 2020.

Table 4: Monthly Total Insoluble Matter ($\text{g/m}^2/\text{month}$) measured for Dust Deposition Gauge 4 during 2020 and calculated rolling annual average Total Insoluble Matter ($\text{g/m}^2/\text{month}$).

Month and Year	Total Insoluble Matter	Rolling Annual Average	Comments
January 2020	3.2	3.0	
February 2020	9.5	3.3	Drought /windy conditions and bushfires causing poor AQ in the area
March 2020	5.8	3.6	Drought /windy conditions and bushfires causing poor AQ in the area
April 2020	6.7	4.0	Drought /windy conditions causing poor AQ in the area
May 2020	1.0	3.8	
June 2020	0.7	3.9	
July 2020	0.9	3.6	
August 2020	0.4	3.6	
September 2020	0.8	3.6	
October 2020	1.6	3.2	
November 2020	5.3	3.5	
December 2020	7.8	3.6	

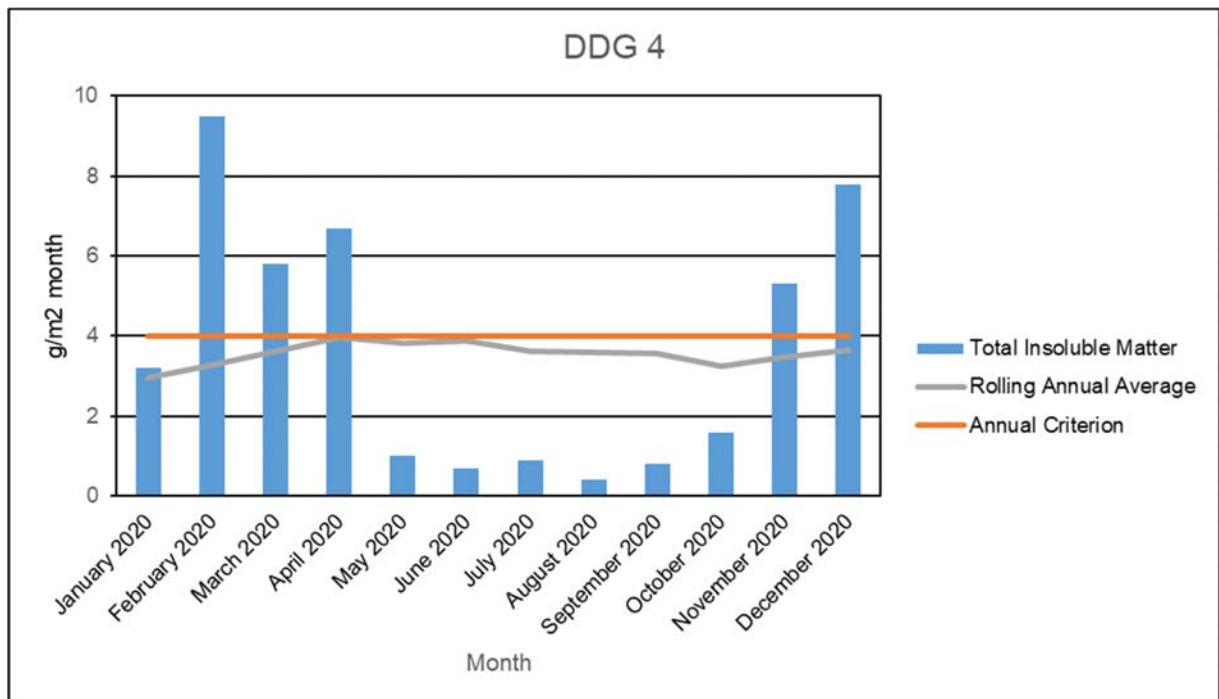


Figure 5: Total Insoluble Matter, rolling annual average, and annual criterion ($\text{g/m}^2/\text{month}$) for the East Guyong Quarry as measured at DDG-4 during 2020.