



CBased Environmental Pty Limited

ABN 62 611 924 264



Calga Quarry

Environmental Monitoring

**Dust Deposition, Surface Water,
Groundwater and Meteorological Data**

September 2020

Colin Davies BSc MEIA CEnvP
Environmental Scientist
Date: 22 October 2020

Executive Summary

CBased Environmental is contracted by Hanson Quarry Products to conduct environmental monitoring at the Calga Sand Quarry.

The monitoring includes:

- Dust deposition;
- Surface water; and
- A meteorological data.

This report was prepared by CBased Environmental and includes the following results for September 2020:

- Dust deposition;
- Surface water quality; and
- Meteorological parameters.

The September 2020 dust deposition results for insoluble solids showed:

- Increased levels when compared to August 2020;
- No excessively contaminated dust gauges; and
- Rolling annual averages below the Air Quality Management Plan criteria of 3.7g/m².month.

Monthly surface water samples were collected at sites A, C1, C2, D and F. Site B was not flowing at the time of collection. The samples were collected and analysed for a monthly sampling event. Results show pH within the slightly acidic range, low electrical conductivity, low total dissolved solids and low total suspended solids. Oil and grease was not detected at sites A, C1, D, and F in September 2020.

The Calga Quarry weather station data recovery in September 2020 was approximately 97%. A summary of rainfall comparison is provided below.

| Location | Rainfall (mm) |
|---|---------------|
| Calga Quarry | 35.4mm |
| BOM Peats Ridge* | NA |
| BOM Gosford* | 50.2mm |
| BOM Peats Ridge long-term mean for September* | 69.1mm |

Notes: NA = Not Available

*Data sourced from Bureau of Meteorology (BOM) website: www.bom.gov.au

BOM stations report rainfall at 9am

Calga Quarry station reports rainfall at midnight.

1.0 Sampling Programme

Hanson Calga Quarry conducts environmental monitoring in accordance to Development Consent, OEH (EPA) licence and Environmental Management Plans. CBased Environmental are contracted to undertake dust deposition gauge, surface water, groundwater and meteorological monitoring for the project. CBased Environmental commenced monitoring from the April 2006 monitoring period.

Dust deposition gauges are operated to the Australian Standard AS3580.10.1 *“Methods for sampling and analysis of ambient air method. Determination of particulates- deposited matter- gravimetric method”*. Sampling is undertaken every 30 +/- 2 days and each gauge is analysed for insoluble solids and ash residue. The results are reported as g/m².month.

Six (6) dust deposition gauges are monitored as follows:

- CD1 – installed 1 May 2006. Gauges air quality impacts to the east of site operations;
- CD2c – located on a rehabilitated section of land between the extraction area and adjacent resident. Gauges air quality impacts to the north of site operations. Replaces former gauges CD2a and CD2b;
- CD3 – installed prior to May 2006. Gauges air quality impacts to the south of site operations;
- CD4 – installed 3 October 2006. Gauges air quality impacts to the south of site operations;
- CD5 – installed 14 December 2006. Gauges air quality impacts to the south of site operations; and
- CD6 installed 14 December 2006. Gauges air quality impacts to the south of the operations.

Dust gauge CD2a was discontinued at the start of August 2006 due to quarry operations “mining out” the site of the gauge. The replacement gauge, CD2b, was located in a position adjacent to the boundary between B. Kashouli and F. & J. Gazzana in conformance with the Air Quality Management Plan. CD2b was discontinued at the end of January 2010 due to contamination of the gauge by non-quarry related vehicle movements on a track adjacent to the gauge. CD2b was replacement by dust gauge CD2c.

Surface water is sampled in accordance with Australian Standards:

- AS5667.1 *“Guidance on the design of sample programs, sampling techniques and the preservation and handling of samples”*;
- AS5667.6 *“Water quality sampling—guidance on sampling of rivers and streams”*; and
- AS5667.4 *“Water quality sampling—guidance on sampling from lakes, natural and man-made”*.

Surface water monitoring sites include local streams and dams. Laboratory analysis includes pH, electrical conductivity, total suspended solids, total dissolved solids and total oil and grease. Monitoring is conducted monthly at Sites A and F (dams) and

when Sites B, C and D are flowing. Additional samples are collected when daily rainfall exceeds 50mm.

Groundwater is sampled in accordance with Australian Standards:

- AS5667.1 *“Guidance on the design of sample programs, sampling techniques and the preservation and handling of samples”*; and
- AS5667.11 *“Water quality sampling—guidance on sampling of ground waters”*.

Groundwater monitoring sites are sampled bi-monthly for depth and water quality. Groundwater monitoring loggers continuously record water levels in a selection of bores.

Meteorological monitoring is conducted at the quarry and displayed on the site computer with a real-time display. Metrological parameters are measured according to Australian Standard AS3580.14 *“Methods for sampling and analysis of ambient air. Meteorological monitoring for ambient air quality monitoring applications”*

The weather station has the following sensor configuration:

- Air temperature;
- Humidity;
- Rainfall;
- Atmospheric pressure;
- Evaporation;
- Solar radiation;
- Wind speed; and
- Wind direction.

CBased Environmental continued to operate the monitoring equipment and utilise site collections at their existing locations.

The locations of monitoring points are provided in **Figure 1**.

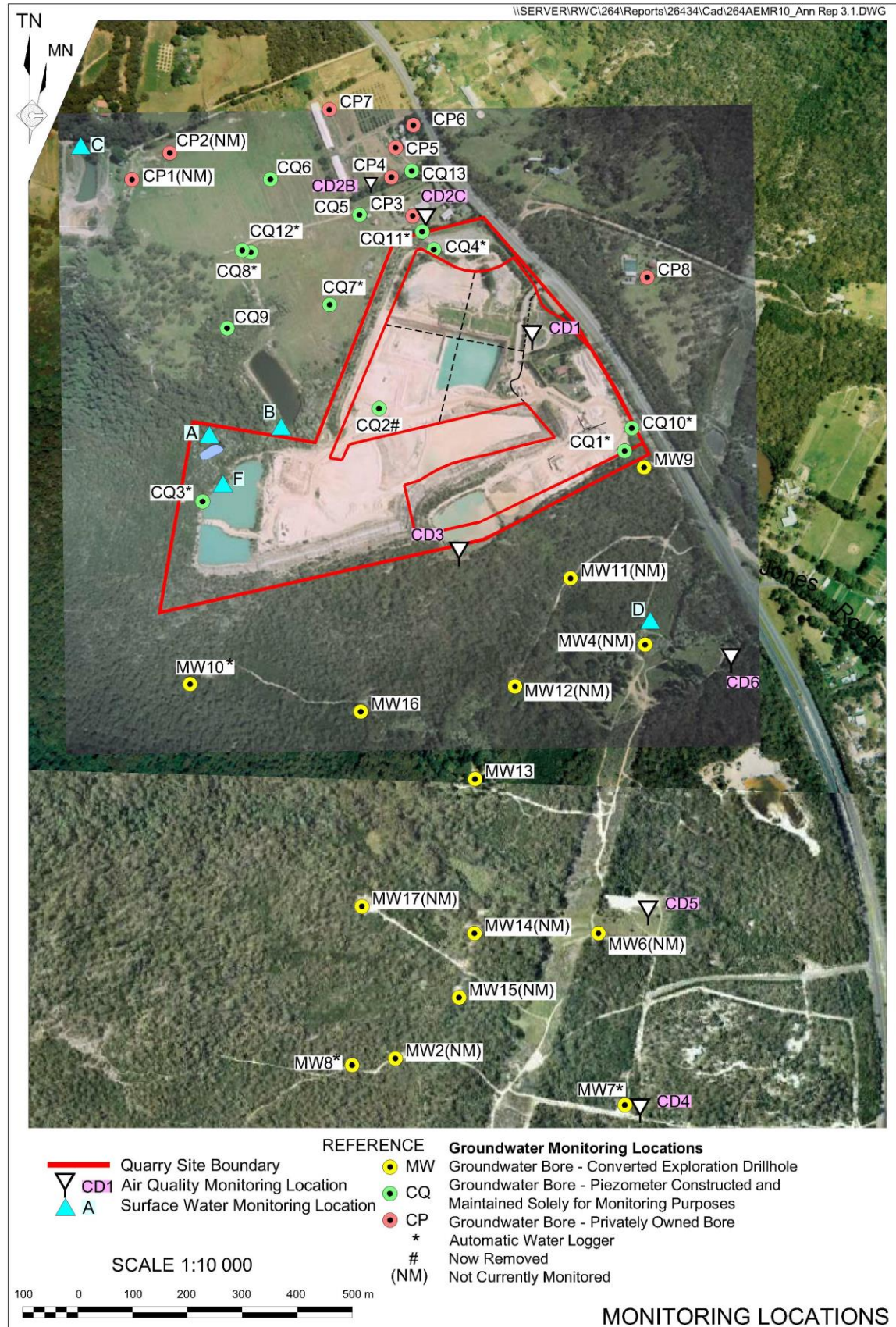


Figure 1: Hanson Calga Quarry Environmental Monitoring Locations

2.0 Results

2.1 Dust Deposition

The results for September 2020 and the project 12-month rolling average are provided **Table 1**.

Dust deposition charts for all dust gauge sites appear in **Figure 2** below. The field sheet, chain of custody documentation and laboratory analysis certificates are provided in **Appendix 1**.

Table 1: Dust Deposition Results: 1 September 2020 – 1 October 2020 (30 days)

| Site | Monthly Insoluble Solids | Monthly Ash Residue | Monthly Combustible Matter | Monthly Ash Residue/ Insoluble Solids % | Rolling Annual Average Insoluble Solids |
|------|--------------------------|---------------------|----------------------------|---|---|
| CD1 | 1.8 | 1.4 | 0.4 | 78 | 2.1 |
| CD2c | 1.1 | 0.7 | 0.4 | 64 | 1.6 |
| CD3 | 1.5 | 1.1 | 0.4 | 73 | 1.7 |
| CD4 | 1.5 | 0.8 | 0.7 | 53 | 1.5 |
| CD5 | 0.3 | 0.2 | 0.1 | 67 | 1.5 |
| CD6 | 0.6 | 0.3 | 0.3 | 50 | 1.3 |

Notes:

Units in g/m².month unless indicated

Insoluble solid results marked with an * indicate an excessively contaminated gauge. Contamination can include bird droppings, vegetation (such as plant matter, algae, pollen and seeds) and insects

Results in **bold** indicate insoluble solids levels above 3.7g/m².month; the Development Consent's annual average amenity criteria at residential locations

The current rolling annual average is calculated from October 2019 to September 2020

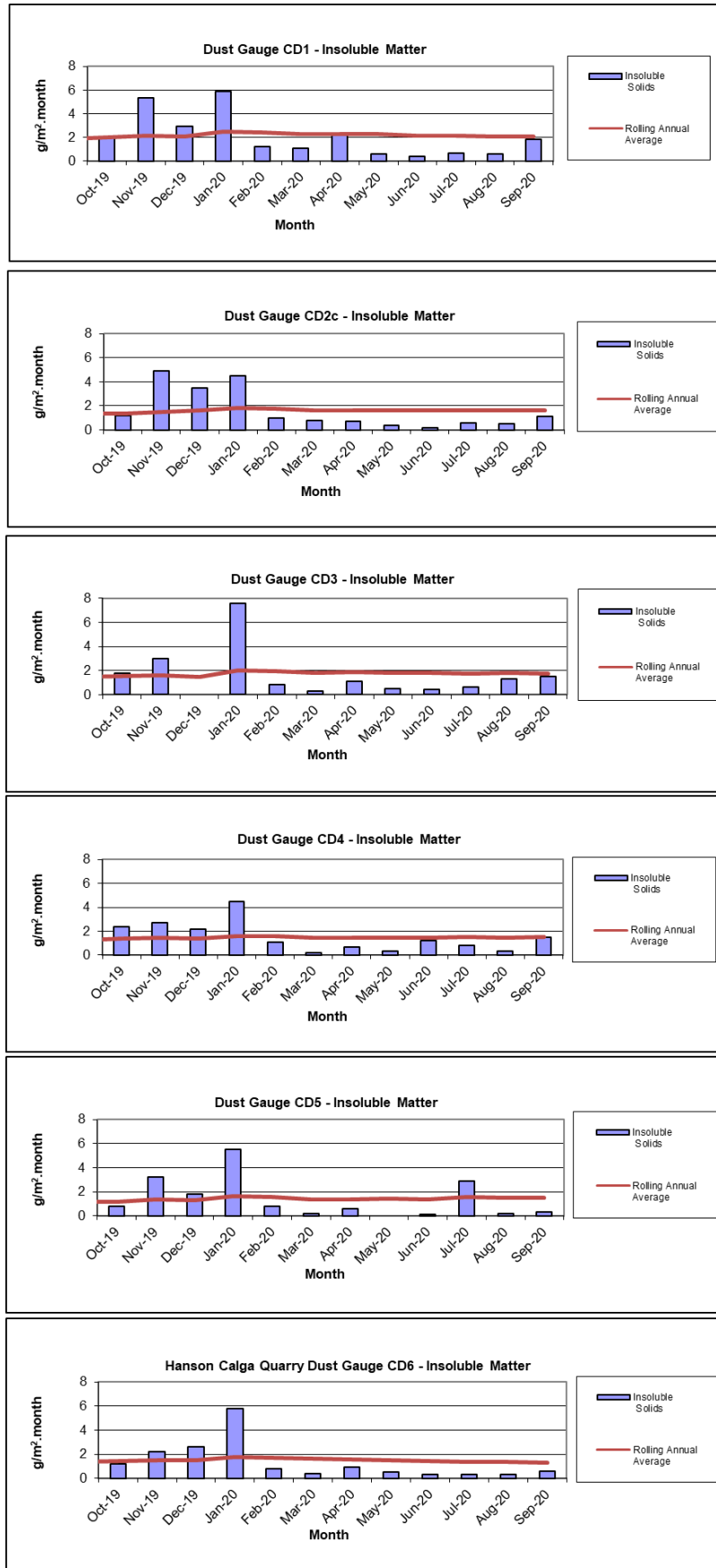


Figure 2: Summary Monthly/Annual Dust Deposition Results for Insoluble Solids

2.2 Surface Water (Monthly)

Monthly surface water monitoring was conducted on 1 September 2020 and results are provided in **Table 2**. The field sheet, chain of custody documentation and laboratory analysis certificates are provided in **Appendix 1**.

Samples were collected at sites A, C1, C2, D and F. Site B was not flowing at the time of collection.

Table 2: Monthly Surface Water Monitoring Results – September 2020

| Site | Observed Flow Rate* (visual) | Water Colour* (visual) | Turbidity* (visual) | pH | EC (µS/cm) | TDS (mg/L) | TSS (mg/L) | Oil and Grease (mg/L) |
|------|------------------------------|------------------------|---------------------|------|------------|------------|------------|-----------------------|
| A | Dam | Clear | Clear | 6.01 | 99 | 55 | <5 | <5 |
| B | Not flowing | | | | | | | |
| C1 | Dam | Clear | Clear | 6.58 | 88 | 50 | 10 | <5 |
| C2 | Steady | Clear | Clear | 6.22 | 114 | 58 | 9 | <5 |
| D | Still | Clear | Clear | 5.27 | 88 | 56 | <5 | <5 |
| F | Dam | Clear | Clear | 5.63 | 94 | 56 | 26 | <5 |

* Indicates field measurements. All other results are laboratory analysed

EC = Electrical conductivity

TDS = Total dissolved solids

TSS = Total suspended solids

2.2.1 Non-Routine Surface Water Sampling

Non-routine surface water sampling was completed on 14 September 2020 for 'Hanson Calga Quarry, Site Water Discharge Dam 1(A)' for sample 'Discharge Dam 1 (A) 14/092020 (Test prior to release)'. The chain of custody documentation and laboratory analysis certificates are provided in **Appendix 1**.

2.3 Meteorological Data

The Calga Quarry weather station data recovery for September 2020 was approximately 97%. Insufficient data on 30 September due to missing data from 9.30am onwards due to a power outage onsite.

The weather station data follows and includes:

- Monthly rainfall comparison between quarry data and BOM data. Refer to **Table 3**;
- Monthly data summary. Refer to **Table 4**;
- Weather charts of air temperature, humidity, heat index and wind chill, atmospheric pressure, solar radiation, evapotranspiration, rain, wind speed and data reception. Refer to **Figures 6 – 9**; and
- Wind rose (frequency distribution diagram of wind speed and direction). Refer to **Figure 10**.

A summary of rainfall comparison is provided in **Table 3**.

Table 3: Comparison of Local Rainfall – September 2020

| Location | Rainfall (mm) |
|---|---------------|
| Calga Quarry | 35.4mm |
| BOM Peats Ridge* | NA |
| BOM Gosford* | 50.2mm |
| BOM Peats Ridge long-term mean for September* | 69.1mm |

Notes: NA = Not Available

*Data sourced from Bureau of Meteorology (BOM) website: www.bom.gov.au

BOM stations report rainfall at 9am

Calga Quarry station reports rainfall at midnight.

An annual calibration was undertaken on the weather station during April 2020 and is next due in March 2021. Please refer to **Appendix 1**.

Table 4: Summary of Monthly Meteorological Data – September 2020

| Date | Temperature Min | Temperature Avg | Temperature Max | Relative Humidity Min | Relative Humidity Avg | Relative Humidity Max | Rain | Evapotranspiration | Wind Speed Min | Wind Speed Avg | Wind Speed Max | Wind Chill Min | Heat Index Max | Atmospheric Pressure Min | Atmospheric Pressure Avg | Atmospheric Pressure Max | Solar Radiation Min | Solar Radiation Avg | Solar Radiation Max | Data Min | Data Avg | Data Max |
|---|----------------------|-----------------|-----------------|------------------------------|-----------------------|-----------------------|------|--------------------|-------------------------|----------------|----------------|----------------|----------------|--------------------------|--------------------------|--------------------------|--|---------------------|---------------------|----------------|----------|----------|
| 1/09/2020 | 8.1 | 12.9 | 19.2 | 49.0 | 71.3 | 91.0 | 0.0 | 2.9 | 0.0 | 1.6 | 7.6 | 8.2 | 18.5 | 1018.1 | 1019.9 | 1022.2 | 0.0 | 171.3 | 926.0 | 59.6 | 87.8 | 100.0 |
| 2/09/2020 | 7.4 | 15.7 | 23.3 | 39.0 | 66.7 | 92.0 | 0.0 | 3.1 | 0.0 | 1.3 | 9.4 | 7.4 | 22.7 | 1013.3 | 1016.4 | 1018.9 | 0.0 | 164.1 | 704.0 | 74.1 | 89.8 | 99.4 |
| 3/09/2020 | 17.8 | 22.8 | 30.0 | 31.0 | 49.1 | 62.0 | 0.0 | 5.6 | 0.4 | 3.1 | 11.6 | 17.9 | 29.6 | 1010.0 | 1012.4 | 1014.7 | 0.0 | 213.1 | 834.0 | 57.4 | 84.1 | 99.7 |
| 4/09/2020 | 14.6 | 18.8 | 22.1 | 49.0 | 65.2 | 96.0 | 9.0 | 1.8 | 0.0 | 1.9 | 11.6 | 13.8 | 21.3 | 1010.3 | 1012.0 | 1014.8 | 0.0 | 34.4 | 198.0 | 42.6 | 81.7 | 92.7 |
| 5/09/2020 | 10.5 | 15.6 | 21.8 | 42.0 | 74.9 | 97.0 | 0.4 | 3.7 | 0.0 | 1.3 | 8.0 | 10.6 | 20.8 | 1010.6 | 1014.5 | 1020.9 | 0.0 | 219.1 | 796.0 | 44.8 | 73.6 | 91.2 |
| 6/09/2020 | 8.6 | 13.7 | 19.7 | 55.0 | 79.5 | 96.0 | 0.0 | 2.4 | 0.0 | 1.4 | 8.0 | 8.6 | 19.1 | 1021.1 | 1024.4 | 1027.0 | 0.0 | 138.5 | 760.0 | 78.2 | 88.4 | 93.1 |
| 7/09/2020 | 8.8 | 15.3 | 22.2 | 49.0 | 75.9 | 97.0 | 0.2 | 4.0 | 0.0 | 2.4 | 8.9 | 8.9 | 21.7 | 1025.9 | 1027.3 | 1028.9 | 0.0 | 222.4 | 795.0 | 52.7 | 81.0 | 92.4 |
| 8/09/2020 | 8.9 | 17.1 | 26.2 | 41.0 | 69.1 | 93.0 | 0.0 | 3.7 | 0.0 | 1.1 | 5.8 | 8.9 | 25.8 | 1021.1 | 1024.3 | 1027.4 | 0.0 | 212.9 | 813.0 | 61.5 | 81.5 | 90.2 |
| 9/09/2020 | 11.3 | 13.9 | 18.4 | 60.0 | 87.6 | 97.0 | 9.6 | 0.9 | 0.0 | 1.3 | 10.3 | 11.3 | 18.0 | 1019.9 | 1023.4 | 1025.1 | 0.0 | 43.3 | 291.0 | 52.4 | 75.5 | 89.3 |
| 10/09/2020 | 10.3 | 13.0 | 16.9 | 56.0 | 82.2 | 97.0 | 1.8 | 2.4 | 0.0 | 1.3 | 9.4 | 10.1 | 16.1 | 1023.0 | 1025.1 | 1027.1 | 0.0 | 148.9 | 974.0 | 62.5 | 76.7 | 89.3 |
| 11/09/2020 | 9.9 | 13.3 | 18.4 | 67.0 | 86.6 | 97.0 | 0.8 | 1.9 | 0.0 | 1.0 | 6.3 | 9.9 | 18.1 | 1025.5 | 1027.0 | 1029.1 | 0.0 | 128.2 | 675.0 | 53.3 | 79.4 | 90.9 |
| 12/09/2020 | 7.4 | 15.0 | 24.0 | 45.0 | 78.6 | 98.0 | 0.6 | 3.7 | 0.0 | 1.3 | 6.7 | 7.4 | 23.8 | 1020.1 | 1023.3 | 1026.7 | 0.0 | 234.1 | 827.0 | 75.7 | 83.2 | 91.2 |
| 13/09/2020 | 10.9 | 17.3 | 24.7 | 45.0 | 64.1 | 86.0 | 0.0 | 3.4 | 0.0 | 1.5 | 8.5 | 11.0 | 24.4 | 1017.4 | 1019.5 | 1021.4 | 0.0 | 163.2 | 1001.0 | 76.0 | 82.0 | 87.4 |
| 14/09/2020 | 12.7 | 16.8 | 22.4 | 54.0 | 73.1 | 94.0 | 0.0 | 4.0 | 0.0 | 1.3 | 8.0 | 12.8 | 22.3 | 1018.7 | 1021.1 | 1024.1 | 0.0 | 235.6 | 825.0 | 72.9 | 83.0 | 96.2 |
| 15/09/2020 | 13.2 | 17.2 | 23.7 | 61.0 | 82.3 | 96.0 | 0.0 | 2.9 | 0.0 | 2.2 | 9.4 | 13.2 | 24.1 | 1021.6 | 1023.7 | 1026.1 | 0.0 | 150.5 | 961.0 | 73.5 | 88.8 | 100.0 |
| 16/09/2020 | 11.0 | 19.4 | 27.9 | 35.0 | 66.3 | 97.0 | 0.2 | 4.5 | 0.0 | 1.3 | 8.5 | 11.1 | 27.2 | 1015.0 | 1018.9 | 1022.9 | 0.0 | 236.5 | 856.0 | 70.0 | 87.0 | 98.4 |
| 17/09/2020 | 14.7 | 20.6 | 30.2 | 33.0 | 61.7 | 84.0 | 0.0 | 4.8 | 0.0 | 2.1 | 12.5 | 14.4 | 29.7 | 1015.8 | 1019.4 | 1026.5 | 0.0 | 229.1 | 840.0 | 55.8 | 82.8 | 91.5 |
| 18/09/2020 | 13.3 | 14.8 | 16.6 | 80.0 | 91.2 | 97.0 | 1.4 | 0.7 | 0.0 | 0.6 | 7.2 | 13.3 | 16.6 | 1025.5 | 1026.9 | 1029.0 | 0.0 | 46.5 | 244.0 | 71.6 | 91.1 | 100.0 |
| 19/09/2020 | 14.3 | 17.5 | 22.9 | 68.0 | 87.4 | 98.0 | 0.4 | 2.7 | 0.0 | 2.3 | 9.4 | 14.3 | 23.4 | 1015.2 | 1020.7 | 1025.9 | 0.0 | 141.8 | 713.0 | 90.2 | 99.3 | 100.0 |
| 20/09/2020 | 15.1 | 17.1 | 21.5 | 75.0 | 85.6 | 95.0 | 9.4 | 1.9 | 0.0 | 1.9 | 8.9 | 14.6 | 21.8 | 1007.8 | 1011.3 | 1015.0 | 0.0 | 94.9 | 814.0 | 94.0 | 98.2 | 100.0 |
| 21/09/2020 | 15.3 | 21.6 | 28.7 | 56.0 | 74.8 | 92.0 | 0.0 | 3.5 | 0.0 | 1.8 | 13.4 | 15.3 | 29.6 | 1002.6 | 1006.5 | 1009.9 | 0.0 | 182.0 | 918.0 | 88.3 | 95.0 | 99.7 |
| 22/09/2020 | 17.7 | 21.5 | 26.8 | 23.0 | 51.3 | 83.0 | 0.0 | 6.5 | 0.9 | 3.5 | 12.1 | 17.8 | 25.3 | 1002.6 | 1006.0 | 1009.0 | 0.0 | 256.0 | 885.0 | 85.2 | 94.6 | 100.0 |
| 23/09/2020 | 13.4 | 17.9 | 23.4 | 32.0 | 46.6 | 64.0 | 0.0 | 6.0 | 0.4 | 3.3 | 11.6 | 13.4 | 22.5 | 1006.2 | 1008.8 | 1011.3 | 0.0 | 245.7 | 875.0 | 77.0 | 93.5 | 100.0 |
| 24/09/2020 | 11.4 | 16.0 | 21.6 | 27.0 | 47.1 | 65.0 | 0.0 | 5.8 | 0.0 | 3.1 | 13.0 | 9.9 | 19.6 | 1007.7 | 1009.7 | 1011.1 | 0.0 | 263.2 | 890.0 | 78.9 | 89.7 | 96.8 |
| 25/09/2020 | 8.7 | 15.1 | 23.1 | 28.0 | 54.1 | 83.0 | 1.4 | 5.3 | 0.0 | 3.9 | 21.5 | 5.7 | 21.9 | 995.3 | 1003.0 | 1009.4 | 0.0 | 219.4 | 1014.0 | 83.9 | 90.6 | 98.7 |
| 26/09/2020 | 8.5 | 12.0 | 17.1 | 33.0 | 50.6 | 63.0 | 0.2 | 6.4 | 1.3 | 6.0 | 15.6 | 5.4 | 15.1 | 1002.6 | 1007.9 | 1014.4 | 0.0 | 268.8 | 902.0 | 84.5 | 90.9 | 99.4 |
| 27/09/2020 | 7.8 | 12.4 | 18.6 | 37.0 | 60.7 | 75.0 | 0.0 | 4.2 | 0.0 | 2.0 | 9.4 | 6.7 | 16.5 | 1014.1 | 1018.7 | 1023.5 | 0.0 | 232.5 | 1071.0 | 86.4 | 94.1 | 100.0 |
| 28/09/2020 | 6.6 | 12.9 | 21.1 | 35.0 | 67.6 | 89.0 | 0.0 | 3.7 | 0.0 | 1.2 | 8.0 | 6.6 | 19.3 | 1020.7 | 1022.9 | 1025.1 | 0.0 | 217.9 | 972.0 | 78.2 | 92.0 | 99.4 |
| 29/09/2020 | 8.2 | 13.5 | 20.2 | 54.0 | 74.4 | 92.0 | 0.0 | 3.1 | 0.0 | 1.6 | 7.6 | 8.3 | 19.6 | 1019.0 | 1021.9 | 1024.8 | 0.0 | 174.3 | 886.0 | 76.7 | 87.3 | 95.3 |
| 30/09/2020 | | | | | | | | | | | | | | | | | | | | | | |
| Monthly | 6.6 | 16.2 | 30.2 | 23 | 70 | 98 | 35.4 | 105.6 | 0.0 | 2.0 | 21.5 | 5.4 | 29.7 | 995.3 | 1017.8 | 1029.1 | 0.0 | 182.3 | 1071.0 | 42.6 | 87.0 | 100.0 |
| Unit | Degrees Celcius (°C) | | | Percentage Relative Humidity | | | mm | mm | Metres per second (m/s) | | | °C | °C | Hector Pascals (hPa) | | | Watts per square metre (W/m ²) | | | Percentage (%) | | |
| Missing data from 30/09/20 9.30am onwards due to a power outage onsite resulting in insufficient data | | | | | | | | | | | | | | | | | | | | | | |

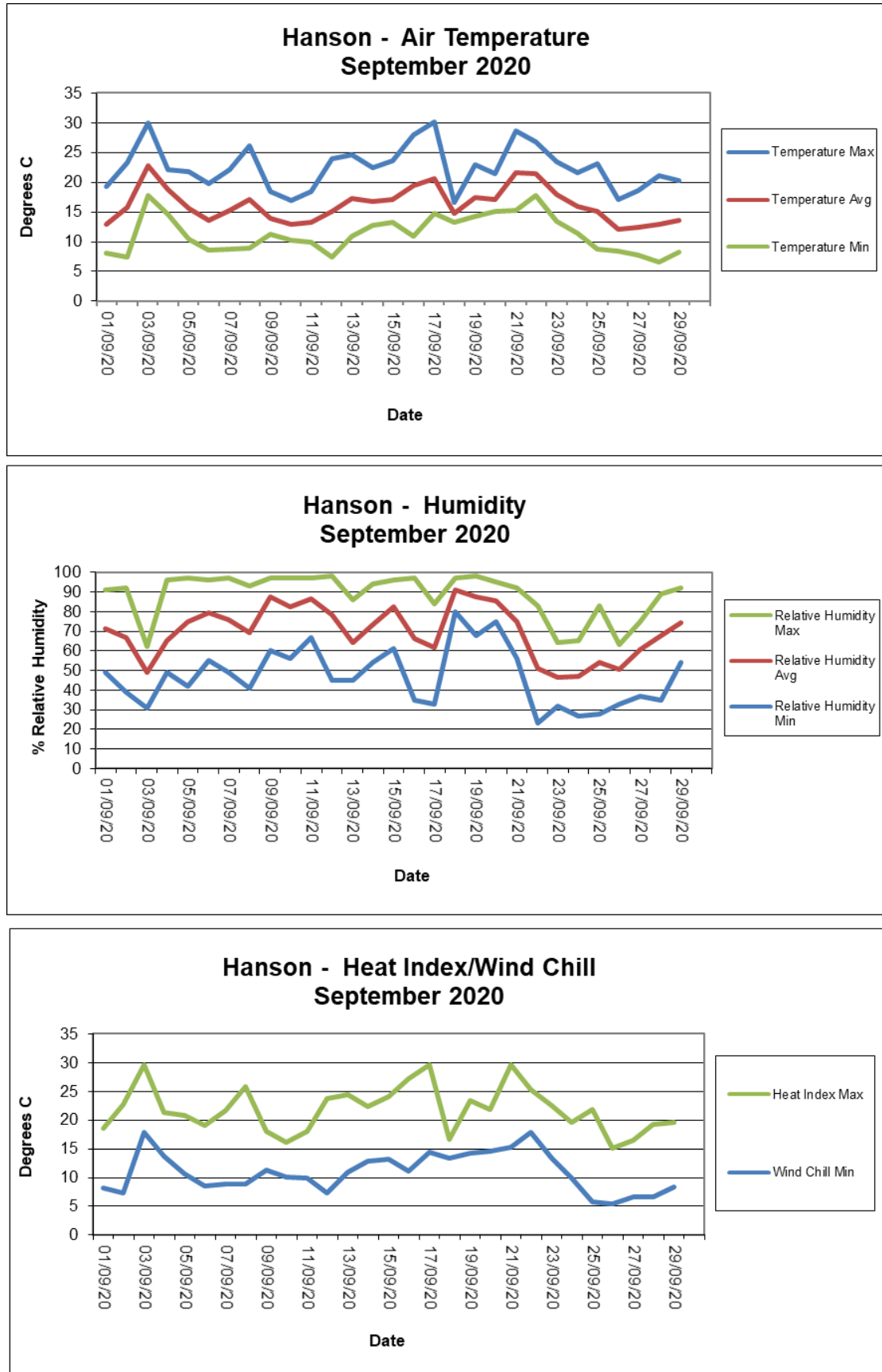


Figure 7 Summary of Monthly Temperature, Humidity and Heat Index Results

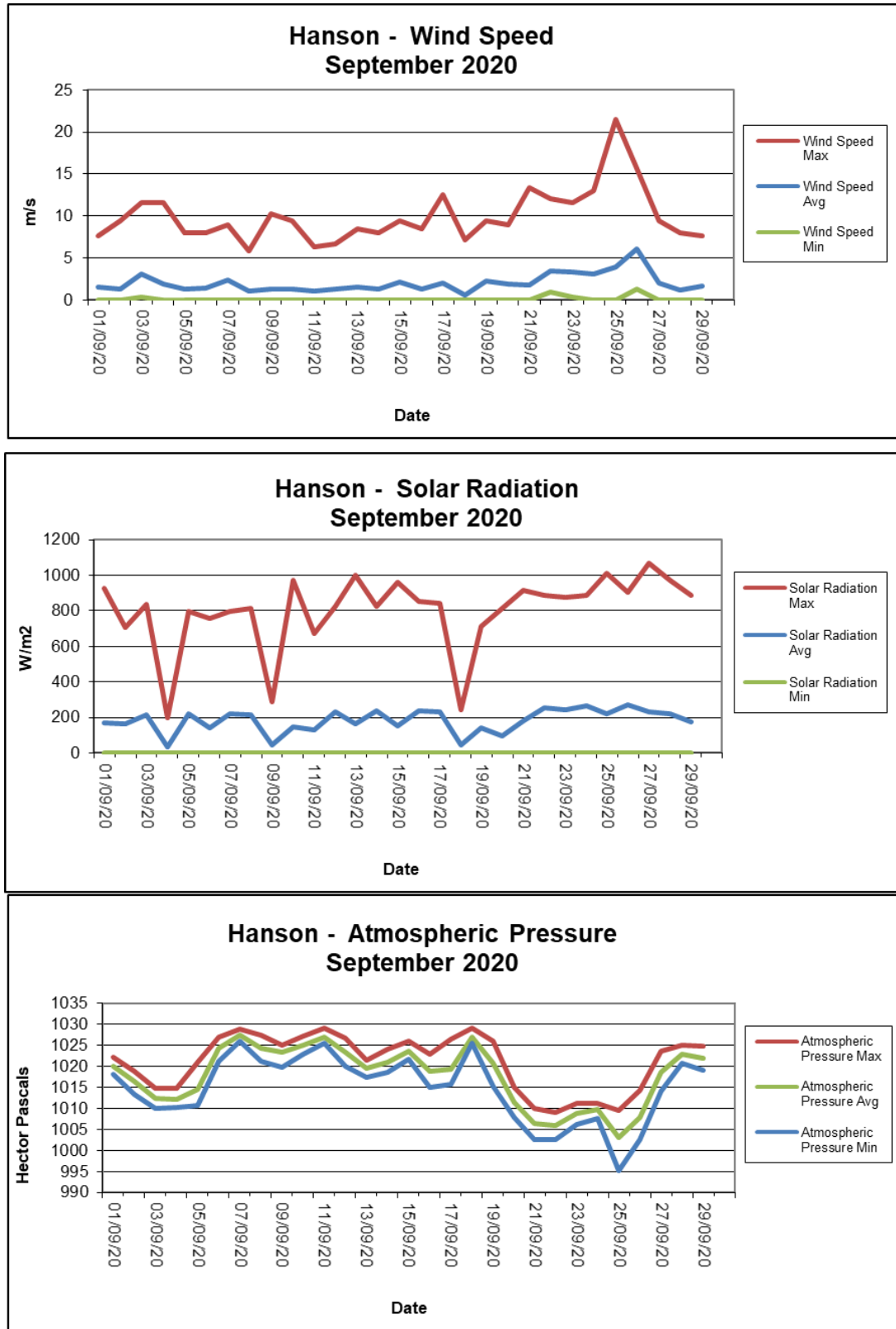


Figure 8 Summary of Monthly Wind Speed, Solar Radiation and Atmospheric Pressure Results

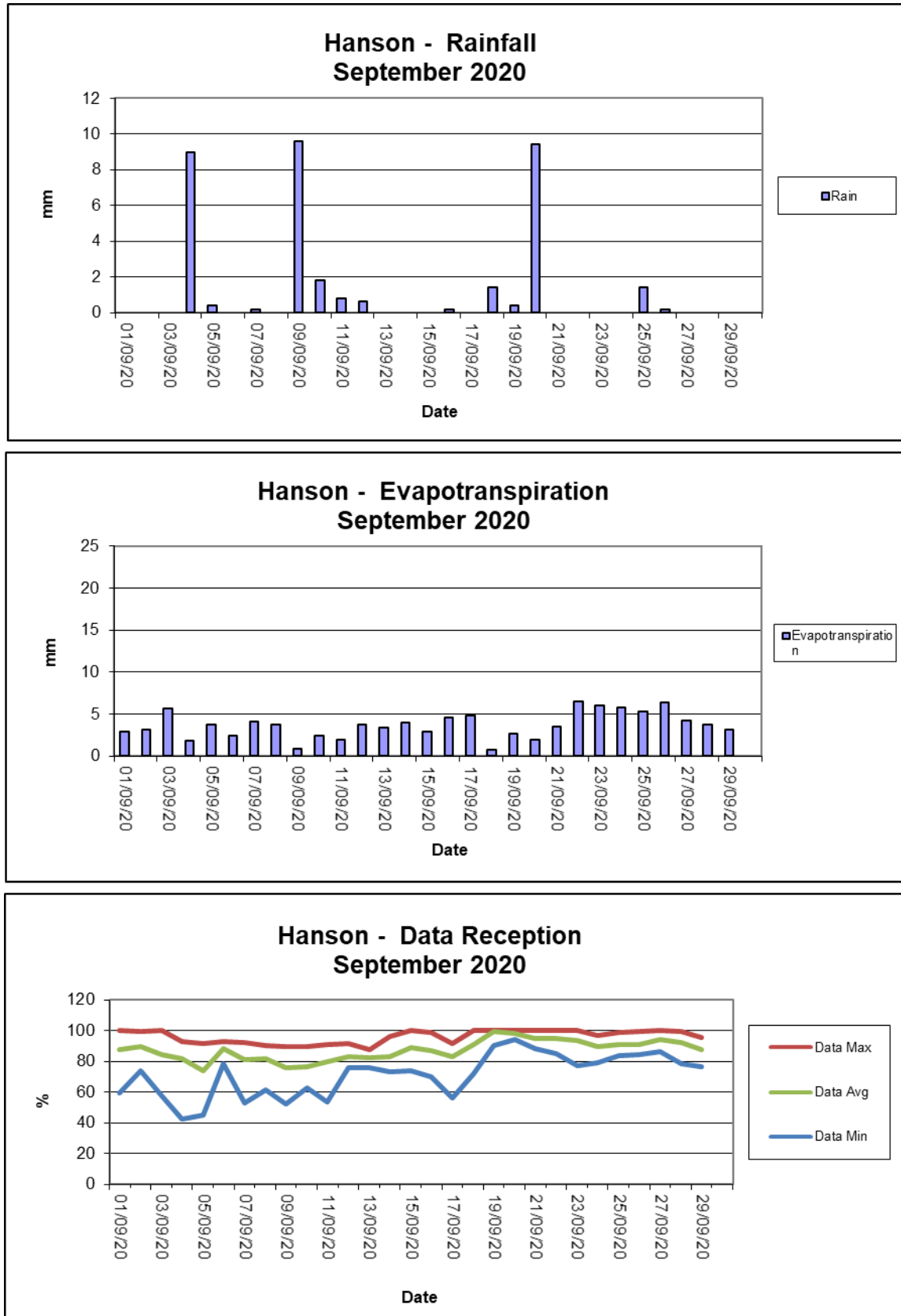


Figure 9 Summary of Monthly Rainfall, Evapotranspiration and Data Reception Results

Frequency plot of the average wind speed and average direction over each 15-minute sampling period. Wind is considered to be calm when at less than a 15-minute average of 1m/s.

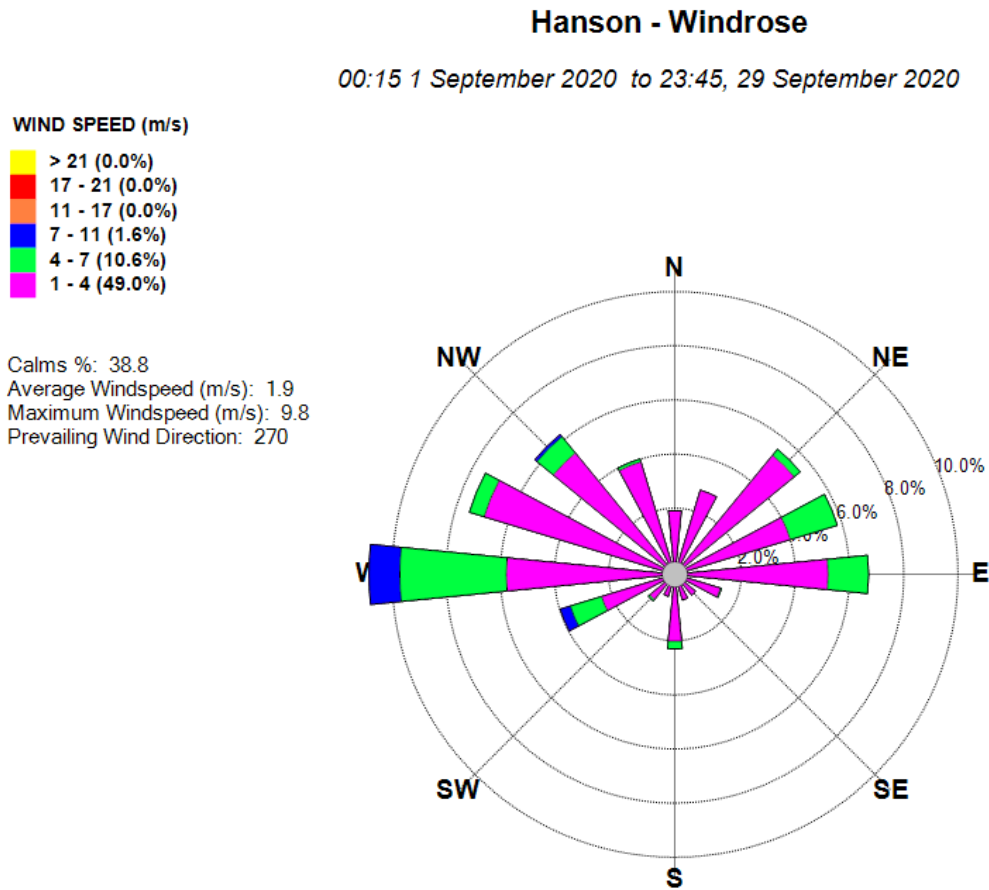


Figure 10: Monthly Windrose Plot – September 2020

The predominant wind for September was from the West, with most frequent, strongest winds from the West. The maximum wind speed was 9.8 m/s from the West. Insufficient data for 30 September due to missing data from 9.30am onwards due to a power outage onsite.

Appendix 1

Field Sheets

Chain of Custody Documentation

Laboratory Analysis Certificates



Date Installed: 1-9-20
Date Collected: 1-10-20

Sampled By: Leesa King

Trees very close.

Report broken funnels and replacement diameters

Signed: Shi

[illegible]

Telephone : +61 2 4014 2500

CERTIFICATE OF ANALYSIS

Work Order : **EN2006619**
Client : **CBASED ENVIRONMENTAL PTY LTD**
Contact : All Deliverables
Address : Unit 3 2 Enterprise Cres
 Singleton NSW 2330
Telephone : +61 02 6571 3334
Project : Hanson Calga Dusts
Order number : ----
C-O-C number : ----
Sampler : Leesa King
Site :
Quote number : SYBQ/403/18 - COMPASS
No. of samples received : 6
No. of samples analysed : 6

Page : 1 of 4
Laboratory : Environmental Division Newcastle
Contact :
Address : 5/585 Maitland Road Mayfield West NSW Australia 2304

Telephone : +61 2 4014 2500
Date Samples Received : 01-Oct-2020 15:42
Date Analysis Commenced : 02-Oct-2020
Issue Date : 14-Oct-2020 10:38



Accreditation No. 825
 Accredited for compliance with
 ISO/IEC 17025 - Testing

This report supersedes any previous report(s) with this reference. Results apply to the sample(s) as submitted. This document shall not be reproduced, except in full.

This Certificate of Analysis contains the following information:

- General Comments
- Analytical Results

Additional information pertinent to this report will be found in the following separate attachments: Quality Control Report, QA/QC Compliance Assessment to assist with Quality Review and Sample Receipt Notification.

Signatories

This document has been electronically signed by the authorized signatories below. Electronic signing is carried out in compliance with procedures specified in 21 CFR Part 11.

| Signatories | Position | Accreditation Category |
|--------------------|---------------------|--|
| Zoran Grozdanovski | Laboratory Operator | Newcastle - Inorganics, Mayfield West, NSW |



General Comments

The analytical procedures used by ALS have been developed from established internationally recognised procedures such as those published by the USEPA, APHA, AS and NEPM. In house developed procedures are fully validated and are often at the client request.

Where moisture determination has been performed, results are reported on a dry weight basis.

Where a reported less than (<) result is higher than the LOR, this may be due to primary sample extract/digestate dilution and/or insufficient sample for analysis.

Where the LOR of a reported result differs from standard LOR, this may be due to high moisture content, insufficient sample (reduced weight employed) or matrix interference.

When sampling time information is not provided by the client, sampling dates are shown without a time component. In these instances, the time component has been assumed by the laboratory for processing purposes.

Where a result is required to meet compliance limits the associated uncertainty must be considered. Refer to the ALS Contact for details.

Key : CAS Number = CAS registry number from database maintained by Chemical Abstracts Services. The Chemical Abstracts Service is a division of the American Chemical Society.
LOR = Limit of reporting
^ = This result is computed from individual analyte detections at or above the level of reporting
ø = ALS is not NATA accredited for these tests.
~ = Indicates an estimated value.

- Analysis as per AS3580.10.1-2016. Samples passed through a 1mm sieve prior to analysis. NATA accreditation does not apply for results reported in g/m².mth as sampling data was provided by the client.



Analytical Results

Sub-Matrix: DEPOSITIONAL DUST
 (Matrix: AIR)

Client sample ID

| | | | | CD1 01/09/2020-01/10/2020 | CD2c 01/09/2020-01/10/2020 | CD3 01/09/2020-01/10/2020 | CD4 01/09/2020-01/10/2020 | CD5 01/09/2020-01/10/2020 |
|--------------------------------------|------------|-----|-------------------------|------------------------------|-------------------------------|------------------------------|------------------------------|------------------------------|
| Client sampling date / time | | | | 01-Oct-2020 00:00 | 01-Oct-2020 00:00 | 01-Oct-2020 00:00 | 01-Oct-2020 00:00 | 01-Oct-2020 00:00 |
| Compound | CAS Number | LOR | Unit | EN2006619-001 | EN2006619-002 | EN2006619-003 | EN2006619-004 | EN2006619-005 |
| | | | | Result | Result | Result | Result | Result |
| EA120: Ash Content | | | | | | | | |
| Ash Content | ---- | 0.1 | g/m ² .month | 1.4 | 0.7 | 1.1 | 0.8 | 0.2 |
| Ash Content (mg) | ---- | 1 | mg | 25 | 12 | 20 | 15 | 4 |
| EA125: Combustible Matter | | | | | | | | |
| Combustible Matter | ---- | 0.1 | g/m ² .month | 0.4 | 0.4 | 0.4 | 0.7 | 0.1 |
| Combustible Matter (mg) | ---- | 1 | mg | 6 | 8 | 6 | 12 | 1 |
| EA141: Total Insoluble Matter | | | | | | | | |
| Total Insoluble Matter | ---- | 0.1 | g/m ² .month | 1.8 | 1.1 | 1.5 | 1.5 | 0.3 |
| Total Insoluble Matter (mg) | ---- | 1 | mg | 31 | 20 | 26 | 27 | 5 |



Analytical Results

Sub-Matrix: **DEPOSITIONAL DUST**
 (Matrix: **AIR**)

Client sample ID

| | | | | CD6 01/09/2020-01/10/2020 | ---- | ---- | ---- | ---- |
|--------------------------------------|------------|-----|-------------------------|------------------------------|-------|-------|-------|-------|
| Client sampling date / time | | | | 01-Oct-2020 00:00 | ---- | ---- | ---- | ---- |
| Compound | CAS Number | LOR | Unit | EN2006619-006 | ----- | ----- | ----- | ----- |
| Result | | | | Result | ---- | ---- | ---- | ---- |
| EA120: Ash Content | | | | | | | | |
| Ash Content | ---- | 0.1 | g/m ² .month | 0.3 | ---- | ---- | ---- | ---- |
| Ash Content (mg) | ---- | 1 | mg | 6 | ---- | ---- | ---- | ---- |
| EA125: Combustible Matter | | | | | | | | |
| Combustible Matter | ---- | 0.1 | g/m ² .month | 0.3 | ---- | ---- | ---- | ---- |
| Combustible Matter (mg) | ---- | 1 | mg | 4 | ---- | ---- | ---- | ---- |
| EA141: Total Insoluble Matter | | | | | | | | |
| Total Insoluble Matter | ---- | 0.1 | g/m ² .month | 0.6 | ---- | ---- | ---- | ---- |
| Total Insoluble Matter (mg) | ---- | 1 | mg | 10 | ---- | ---- | ---- | ---- |



CBASED ENVIRONMENTAL PTY LIMITED

Date: 1.9.20

Client :
Project :

Hanson Calga

SURFACE WATERS

| Site | Flow Rate | Odour | Sampling Time | Bottles | Water Turbidity | Water Colour | Comments |
|------|----------------|--------------|------------------|--|-----------------|-------------------|-------------|
| A | DAM | N | 11:20 | 1x 250ml GP, 1x 500mL GP, 1x PG | CST | CLOOBG | |
| B | DAM | N | 11:05 | 1x 250ml GP, 1x 500mL GP, 1x PG | CST | CLOOBG | NOT FLOWING |
| C1 | DAM | N | 13:00 | 1x 250ml GP, 1x 500mL GP, 1x PG | CST | CLOOBG | |
| C2 | STEADY | N | 13:05 | 1x 250ml GP, 1x 500mL GP, 1x PG | CST | CLOOBG | |
| D | STILL | N | 12:15 | 1x 250ml GP, 1x 500mL GP, 1x PG | CST | CLOOBG | |
| F | DAM | N | 11:15 | 1x 250ml GP, 1x 500mL GP, 1x PG | CST | CLOOBG | |
| | | | | | | | |
| | | | | | | | |
| | | | | | | | |
| | | | | | | | |
| | | | | | | | |

Turbidity: C=Clear, S= Slight, T=Turbid (CIRCLE)

Colour: C=Clear, LO=Light Orange, O=Orange, B=Brown, G=Green (CIRCLE)

Signed:

Sampled by:

ALEX SMITH
MADDIE BROWN

[illegible]

Environmental Division
Sydney
Work Order Reference
ES2030679



Telephone : + 61-2-8784 8555

AUSTRALIAN LABORATORY SERVICES P/L

CERTIFICATE OF ANALYSIS

Work Order : **ES2030679**
Client : **CBASED ENVIRONMENTAL PTY LTD**
Contact : All Deliverables
Address : Unit 3 2 Enterprise Cres
 Singleton NSW 2330
Telephone : +61 02 6571 3334
Project : Hanson Quarry SW
Order number : ----
C-O-C number : ----
Sampler : ----
Site :
Quote number : SYBQ/403/18 - COMPASS
No. of samples received : 5
No. of samples analysed : 5

Page : 1 of 2
Laboratory : Environmental Division Sydney
Contact : Customer Services ES
Address : 277-289 Woodpark Road Smithfield NSW Australia 2164

Telephone : +61-2-8784 8555
Date Samples Received : 01-Sep-2020 14:50
Date Analysis Commenced : 01-Sep-2020
Issue Date : 07-Sep-2020 14:55



Accreditation No. 825
 Accredited for compliance with
 ISO/IEC 17025 - Testing

This report supersedes any previous report(s) with this reference. Results apply to the sample(s) as submitted. This document shall not be reproduced, except in full.

This Certificate of Analysis contains the following information:

- General Comments
- Analytical Results

Additional information pertinent to this report will be found in the following separate attachments: Quality Control Report, QA/QC Compliance Assessment to assist with Quality Review and Sample Receipt Notification.

Signatories

This document has been electronically signed by the authorized signatories below. Electronic signing is carried out in compliance with procedures specified in 21 CFR Part 11.

| <i>Signatories</i> | <i>Position</i> | <i>Accreditation Category</i> |
|--------------------|-------------------------|------------------------------------|
| Ankit Joshi | Inorganic Chemist | Sydney Inorganics, Smithfield, NSW |
| Neil Martin | Team Leader - Chemistry | Chemistry, Newcastle West, NSW |



General Comments

The analytical procedures used by ALS have been developed from established internationally recognised procedures such as those published by the USEPA, APHA, AS and NEPM. In house developed procedures are fully validated and are often at the client request.

Where moisture determination has been performed, results are reported on a dry weight basis.

Where a reported less than (<) result is higher than the LOR, this may be due to primary sample extract/digestate dilution and/or insufficient sample for analysis.

Where the LOR of a reported result differs from standard LOR, this may be due to high moisture content, insufficient sample (reduced weight employed) or matrix interference.

When sampling time information is not provided by the client, sampling dates are shown without a time component. In these instances, the time component has been assumed by the laboratory for processing purposes.

Where a result is required to meet compliance limits the associated uncertainty must be considered. Refer to the ALS Contact for details.

Key : CAS Number = CAS registry number from database maintained by Chemical Abstracts Services. The Chemical Abstracts Service is a division of the American Chemical Society.
 LOR = Limit of reporting
 ^ = This result is computed from individual analyte detections at or above the level of reporting
 Ø = ALS is not NATA accredited for these tests.
 ~ = Indicates an estimated value.

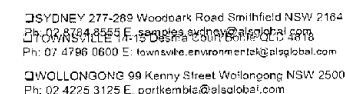
- EA016: Calculated TDS is determined from Electrical Conductivity using a conversion factor of 0.67.

Analytical Results

Sub-Matrix: **WATER**
 (Matrix: **WATER**)

Client sample ID

| | | | | A | C1 | C2 | D | F |
|--|------------|------|---------|-------------------|-------------------|-------------------|-------------------|-------------------|
| Client sampling date / time | | | | 01-Sep-2020 11:20 | 01-Sep-2020 13:00 | 01-Sep-2020 13:05 | 01-Sep-2020 12:15 | 01-Sep-2020 11:15 |
| Compound | CAS Number | LOR | Unit | ES2030679-001 | ES2030679-002 | ES2030679-003 | ES2030679-004 | ES2030679-005 |
| | | | | Result | Result | Result | Result | Result |
| EA005: pH | | | | | | | | |
| pH Value | ---- | 0.01 | pH Unit | 6.01 | 6.58 | 6.22 | 5.27 | 5.63 |
| EA010P: Conductivity by PC Titrator | | | | | | | | |
| Electrical Conductivity @ 25°C | ---- | 1 | µS/cm | 99 | 88 | 114 | 88 | 94 |
| EA015: Total Dissolved Solids dried at 180 ± 5 °C | | | | | | | | |
| Total Dissolved Solids @180°C | ---- | 10 | mg/L | 55 | 50 | 58 | 56 | 56 |
| EA025: Total Suspended Solids dried at 104 ± 2°C | | | | | | | | |
| Suspended Solids (SS) | ---- | 5 | mg/L | <5 | 10 | 9 | <5 | 26 |
| EP020: Oil and Grease (O&G) | | | | | | | | |
| Oil & Grease | ---- | 5 | mg/L | <5 | <5 | <5 | <5 | <5 |



Telephone + 61-2-8784 8555

Water Container Codes: P = Unpreserved Plastic; N = Nitric Preserved Plastic; ORC = Nitric Preserved ORC; SH = Sodium Hydroxide/Cd Preserved; S = Sodium Hydroxide Preserved Plastic; AG = Amber Glass Unpreserved; AP - Airfreight Unpreserved Plastic
V = VOA Vial HCl Preserved; VB = VOA Vial Sodium Bisulphate Preserved; VS = VOA Vial Sulfuric Preserved; AV = Airfreight Unpreserved Vial SG = Sulfuric Preserved Amber Glass; H = HCl preserved Plastic; HS = HCl preserved Speciation bottle; SP = Sulfuric Preserved Plastic; F = Formaldehyde Preserved Glass;
Z = Zinc Acetate Preserved Bottle; E = EDTA Preserved Bottles; ST = Sterile Bottle. ASS = Plastic Bag for Acid Sulphate Soils; B = Unpreserved Bag.

CERTIFICATE OF ANALYSIS

Work Order : **ES2032354**
Client : **HANSON CONSTRUCTION MATERIALS PTY LTD**
Contact : PAUL SLOUGH
Address : 151 Peats Ridge Rd
 Calga 2250
Telephone : ----
Project : HANSON CALGA QUARRY, SITE WATER DISCHARGE DAM 1
 (A)
Order number : 4502774688
C-O-C number : ----
Sampler : ----
Site : ----
Quote number : EN/222
No. of samples received : 1
No. of samples analysed : 1

Page : 1 of 2
Laboratory : Environmental Division Sydney
Contact : Customer Services ES
Address : 277-289 Woodpark Road Smithfield NSW Australia 2164

Telephone : +61-2-8784 8555
Date Samples Received : 14-Sep-2020 17:05

Date Analysis Commenced : 14-Sep-2020
Issue Date : 16-Sep-2020 13:53



Accreditation No. 825
 Accredited for compliance with
 ISO/IEC 17025 - Testing

This report supersedes any previous report(s) with this reference. Results apply to the sample(s) as submitted. This document shall not be reproduced, except in full.

This Certificate of Analysis contains the following information:

- General Comments
- Analytical Results

Additional information pertinent to this report will be found in the following separate attachments: Quality Control Report, QA/QC Compliance Assessment to assist with Quality Review and Sample Receipt Notification.

Signatories

This document has been electronically signed by the authorized signatories below. Electronic signing is carried out in compliance with procedures specified in 21 CFR Part 11.

| Signatories | Position | Accreditation Category |
|-------------|-------------------|------------------------------------|
| Ankit Joshi | Inorganic Chemist | Sydney Inorganics, Smithfield, NSW |



General Comments

The analytical procedures used by ALS have been developed from established internationally recognised procedures such as those published by the USEPA, APHA, AS and NEPM. In house developed procedures are fully validated and are often at the client request.

Where moisture determination has been performed, results are reported on a dry weight basis.

Where a reported less than (<) result is higher than the LOR, this may be due to primary sample extract/digestate dilution and/or insufficient sample for analysis.

Where the LOR of a reported result differs from standard LOR, this may be due to high moisture content, insufficient sample (reduced weight employed) or matrix interference.

When sampling time information is not provided by the client, sampling dates are shown without a time component. In these instances, the time component has been assumed by the laboratory for processing purposes.

Where a result is required to meet compliance limits the associated uncertainty must be considered. Refer to the ALS Contact for details.

Key : CAS Number = CAS registry number from database maintained by Chemical Abstracts Services. The Chemical Abstracts Service is a division of the American Chemical Society.
 LOR = Limit of reporting
 ^ = This result is computed from individual analyte detections at or above the level of reporting
 Ø = ALS is not NATA accredited for these tests.
 ~ = Indicates an estimated value.

Analytical Results

Sub-Matrix: **WATER**
 (Matrix: **WATER**)

Client sample ID

| | | | | Discharge Dam 1 (A) 14/09/2020 (Test prior to release) | ---- | ---- | ---- | ---- |
|--|------------|------|---------|--|-------|-------|-------|-------|
| Client sampling date / time | | | | 14-Sep-2020 14:00 | ---- | ---- | ---- | ---- |
| Compound | CAS Number | LOR | Unit | ES2032354-001 | ----- | ----- | ----- | ----- |
| Result | | | | | ---- | ---- | ---- | ---- |
| EA005P: pH by PC Titrator | | | | | | | | |
| pH Value | ---- | 0.01 | pH Unit | 7.09 | ---- | ---- | ---- | ---- |
| EA010P: Conductivity by PC Titrator | | | | | | | | |
| Electrical Conductivity @ 25°C | ---- | 1 | µS/cm | 125 | ---- | ---- | ---- | ---- |
| EA015: Total Dissolved Solids dried at 180 ± 5 °C | | | | | | | | |
| Total Dissolved Solids @180°C | ---- | 10 | mg/L | 63 | ---- | ---- | ---- | ---- |
| EA025: Total Suspended Solids dried at 104 ± 2°C | | | | | | | | |
| Suspended Solids (SS) | ---- | 5 | mg/L | 12 | ---- | ---- | ---- | ---- |
| EP020: Oil and Grease (O&G) | | | | | | | | |
| Oil & Grease | ---- | 5 | mg/L | <5 | ---- | ---- | ---- | ---- |