

Monthly Report

CLIENT: Hanson Construction Materials Pty Ltd
SITE: Calga Weed Control
MONTH: October 2019

DESCRIPTION OF WORK

Zone	Type of Work	Weed Type	Work Description
Office/Carpark	Secondary	Herbaceous	<ul style="list-style-type: none"> Low-volume spraying was conducted around the car-park, office area, and weight bridge, using a solution of 1% Roundup Biactive® targeting <i>Bidens pilosa</i> (Farmers Friends), <i>Sonchus oleraceus</i> (Sow Thistle), <i>Phytolacca octandra</i> (Inkweed), and <i>Andropogon virginicus</i> (Whiskey Grass).

Management Issues:

- Some weeds near a planted area were accidentally watered, washing off the sprayed herbicide. The weeds were resprayed later in the day to ensure successful herbicide uptake.

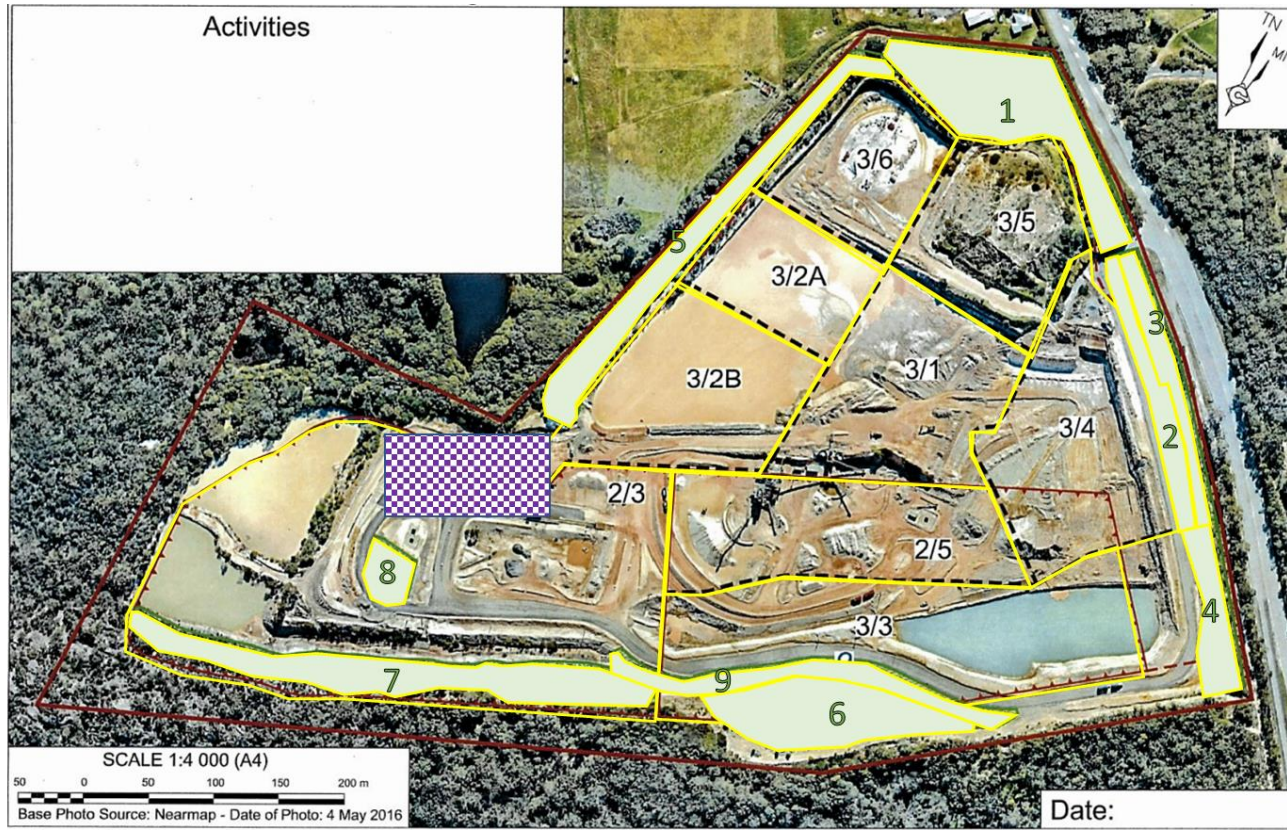
Site Progress:

- All weeds amongst revegetation zones, road edges and mustering areas have now been chemically treated or physically removed.

Fauna Recorded:

- Red brow Finch – *Neochemia temporalis*
- Red-tailed Black Cockatoo - *Calyptorhynchus banksii*

Monthly Report – Calga Weed Control



Client: Hanson Construction Materials Pty Ltd
Date: October 2019



Calga Sand Quarry

NOT TO SCALE
NORTH
Source: Hanson

= Site Boundary

= Planting

	Woody	Herbaceous	Vines
Primary			
Secondary			
Maintenance			