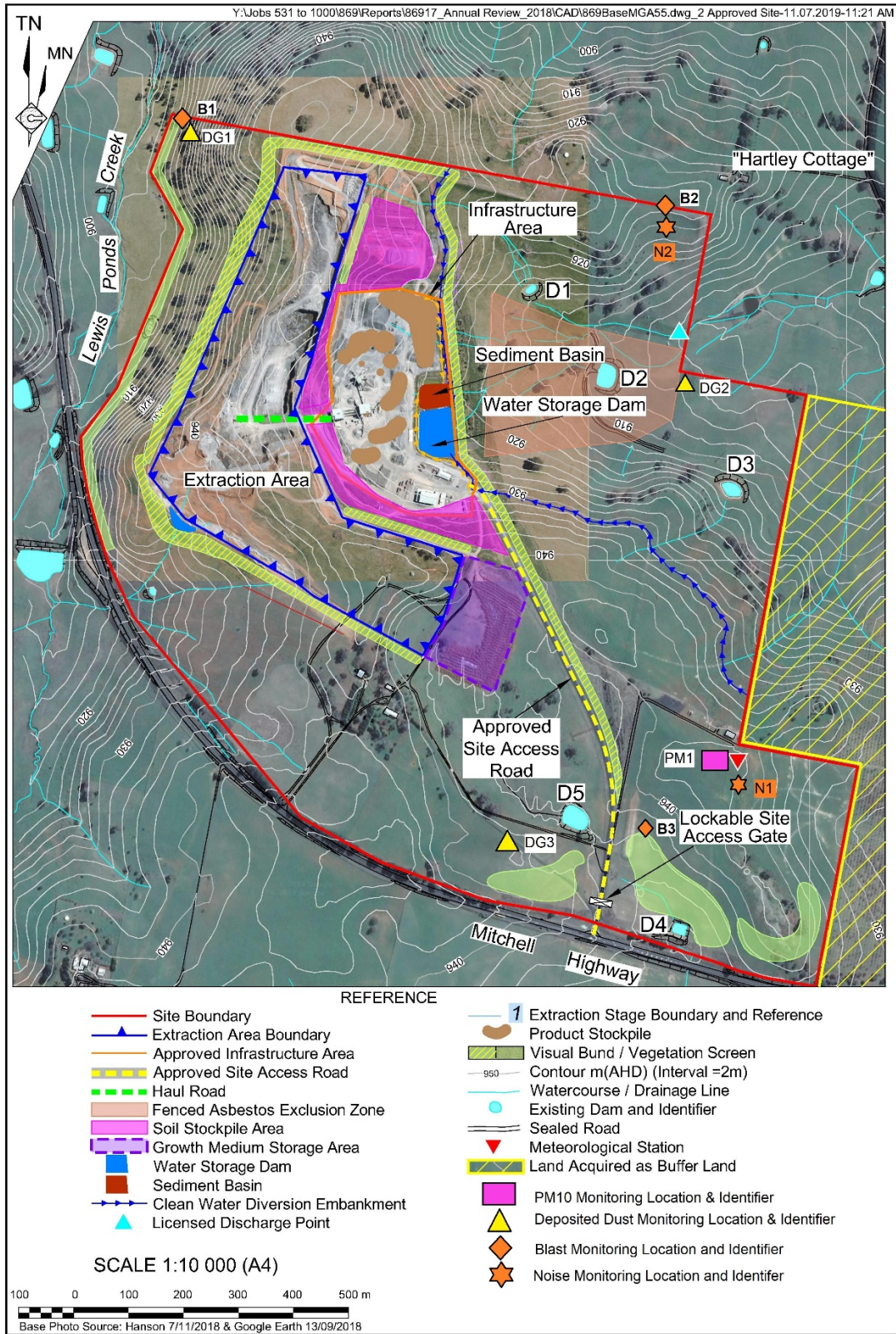




## **East Guyong Quarry**

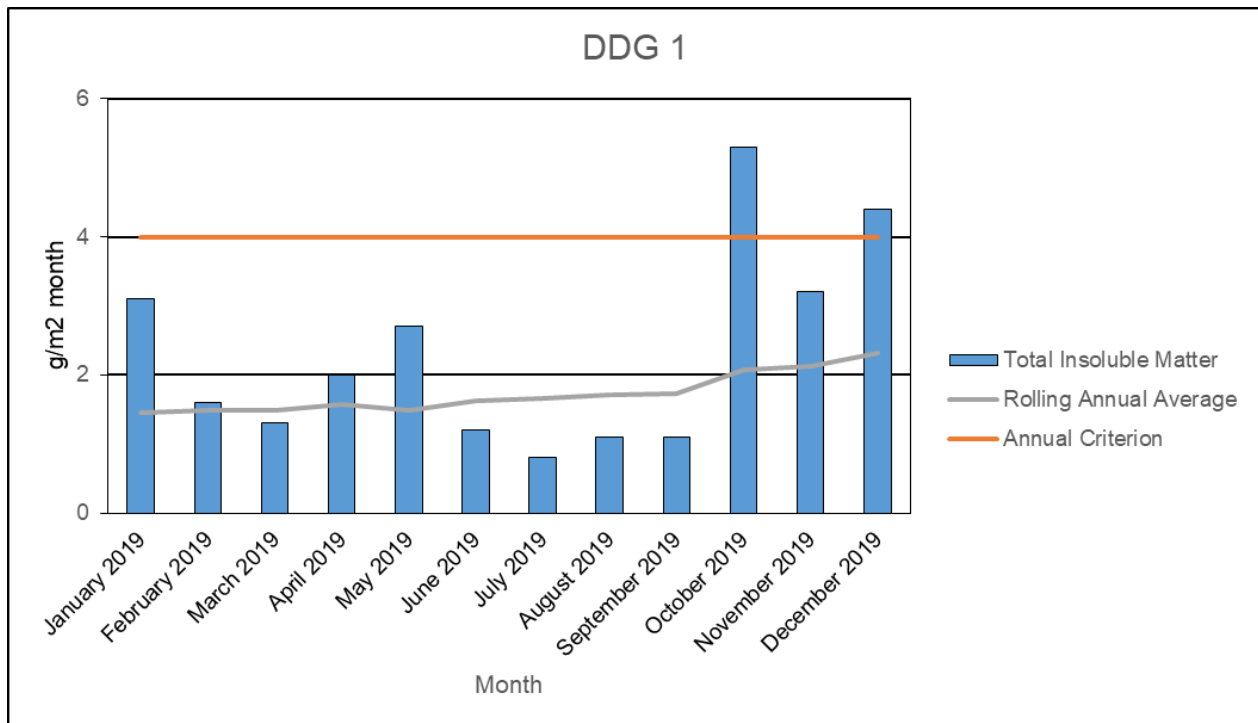
2019 Dust Deposition Monitoring



**Figure 1: Monitoring locations – East Guyong Quarry ( $g/m^2/month$ ) (2019)**

**Table 1:** Monthly Total Insoluble Matter ( $\text{g}/\text{m}^2/\text{month}$ ) measured for Dust Deposition Gauge 1 during 2019 and calculated rolling annual average Total Insoluble Matter ( $\text{g}/\text{m}^2/\text{month}$ ).

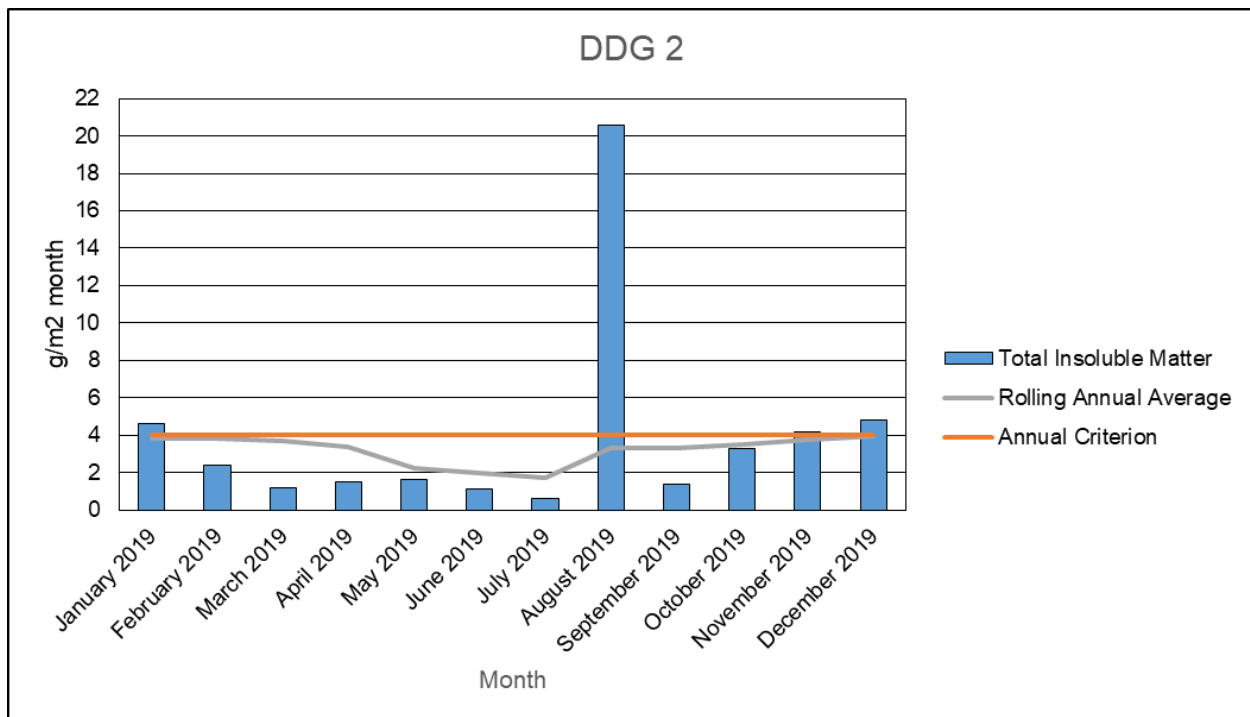
Month and Year	Total Insoluble Matter	Rolling Annual Average	Comments
January 2019	3.1	1.45	
February 2019	1.6	1.48	
March 2019	1.3	1.48	
April 2019	2	1.58	
May 2019	2.7	1.48	
June 2019	1.2	1.63	
July 2019	0.8	1.65	
August 2019	1.1	1.71	
September 2019	1.1	1.59	
October 2019	<b>5.3</b>	2.08	Drought /windy conditions and bushfires causing poor AQ in the area
November 2019	3.2	2.13	
December 2019	<b>4.4</b>	2.32	Drought /windy conditions and bushfires causing poor AQ in the area



**Figure 2:** Total Insoluble Matter, rolling annual average, and annual criterion ( $\text{g}/\text{m}^2/\text{month}$ ) for the East Guyong Quarry as measured at DDG-1 during 2019.

**Table 2:** Monthly Total Insoluble Matter ( $\text{g}/\text{m}^2$  month) measured for Dust Deposition Gauge 2 during 2019 and calculated rolling annual average Total Insoluble Matter ( $\text{g}/\text{m}^2$  month).

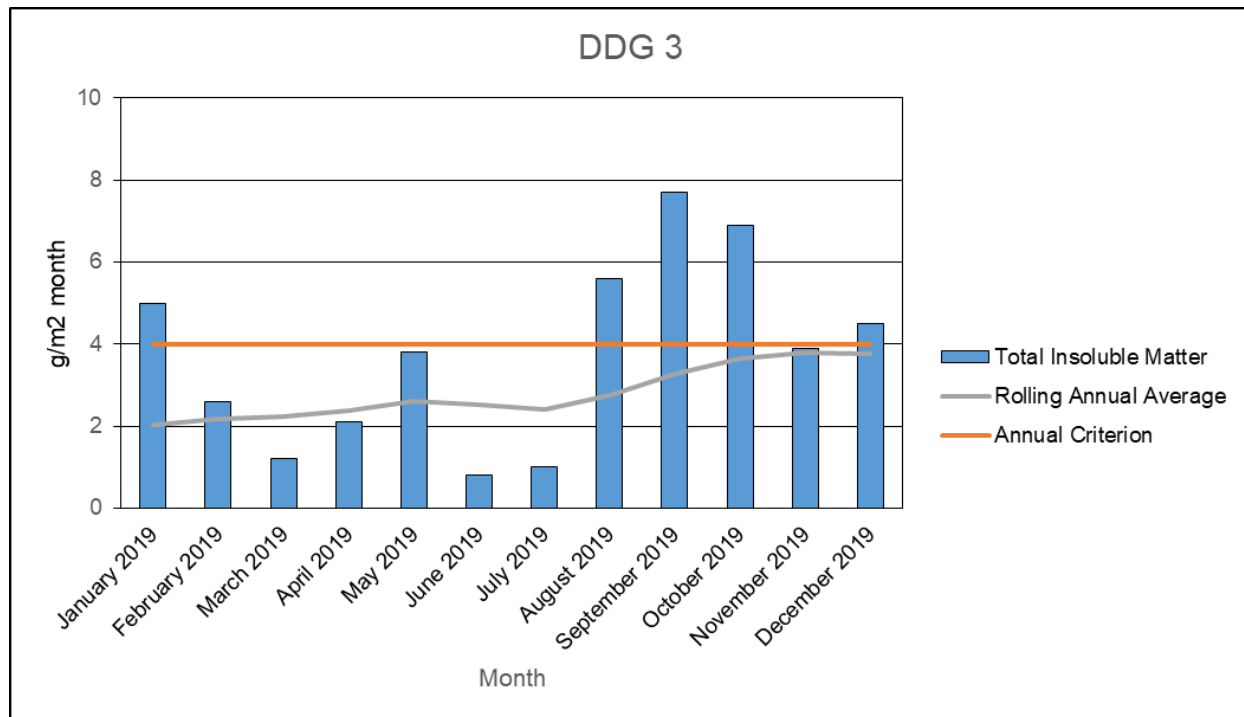
Month and Year	Total Insoluble Matter	Rolling Annual Average	Comments
January 2019	4.6	3.82	Dry summer weather with high winds
February 2019	2.4	3.84	
March 2019	1.2	3.71	
April 2019	1.5	3.38	
May 2019	1.6	2.21	
June 2019	1.1	1.95	
July 2019	0.6	1.73	
August 2019	20.6	3.31	Anomalous results with high organic matter
September 2019	1.4	3.33	
October 2019	3.3	3.48	
November 2019	4.2	3.74	Drought /windy conditions and bushfires causing poor AQ in the area
December 2019	4.8	3.94	Drought /windy conditions and bushfires causing poor AQ in the area



**Figure 3:** Total Insoluble Matter, rolling annual average, and annual criterion ( $\text{g}/\text{m}^2/\text{month}$ ) for the East Guyong Quarry as measured at DDG-2 during 2019.

**Table 3:** Monthly Total Insoluble Matter ( $\text{g}/\text{m}^2/\text{month}$ ) measured for Dust Deposition Gauge 3 during 2019 and calculated rolling annual average Total Insoluble Matter ( $\text{g}/\text{m}^2/\text{month}$ ).

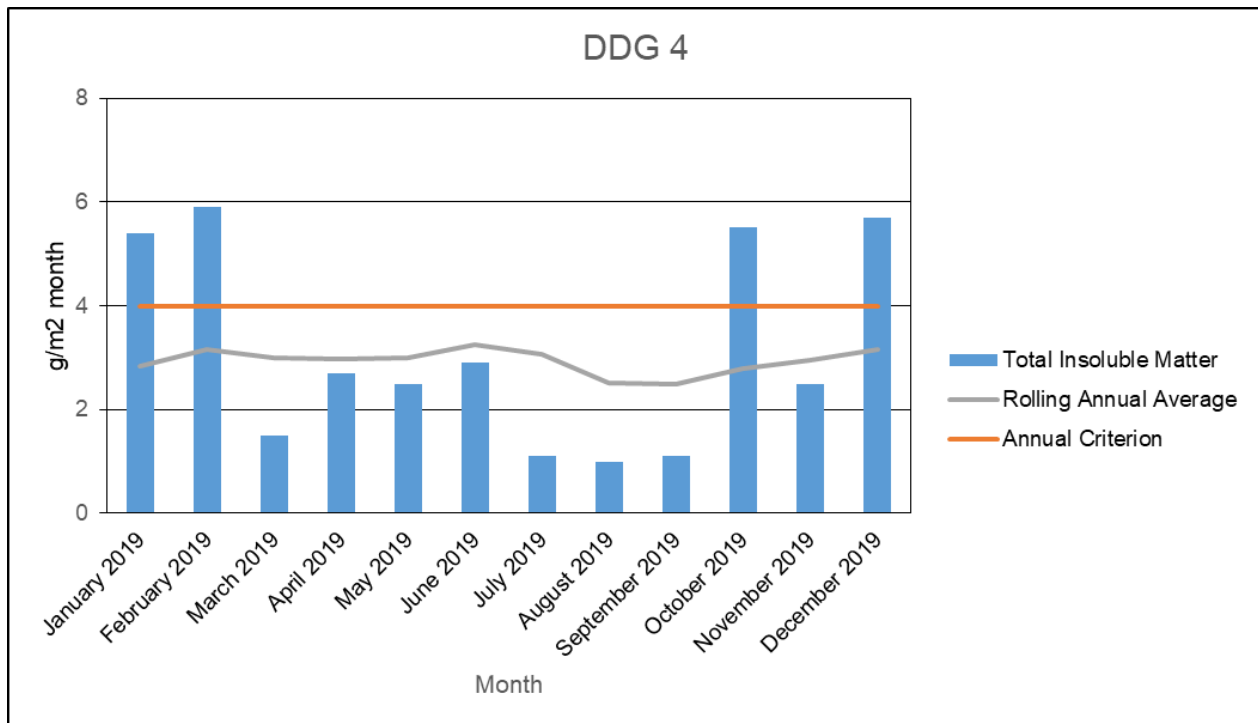
Month and Year	Total Insoluble Matter	Rolling Annual Average	Comments
January 2019	5	2.03	Dry summer weather with high winds
February 2019	2.6	2.18	
March 2019	1.2	2.23	
April 2019	2.1	2.38	
May 2019	3.8	2.60	
June 2019	0.8	2.52	
July 2019	1	2.39	
August 2019	5.6	2.76	Drought /windy conditions causing poor AQ in the area
September 2019	7.7	3.26	Drought /windy conditions causing poor AQ in the area
October 2019	6.9	3.64	Drought /windy conditions and bushfires causing poor AQ in the area
November 2019	3.9	3.79	
December 2019	4.5	3.76	Drought /windy conditions and bushfires causing poor AQ in the area



**Figure 4:** Total Insoluble Matter, rolling annual average, and annual criterion ( $\text{g}/\text{m}^2/\text{month}$ ) for the East Guyong Quarry as measured at DDG-3 during 2019.

**Table 4:** Monthly Total Insoluble Matter ( $\text{g}/\text{m}^2/\text{month}$ ) measured for Dust Deposition Gauge 4 during 2019 and calculated rolling annual average Total Insoluble Matter ( $\text{g}/\text{m}^2/\text{month}$ ).

Month and Year	Total Insoluble Matter	Rolling Annual Average	Comments
January 2019	5.4	2.84	Dry summer weather with high winds
February 2019	5.9	3.15	Dry summer weather with high winds
March 2019	1.5	3.00	
April 2019	2.7	2.98	
May 2019	2.5	2.99	
June 2019	2.9	3.25	
July 2019	1.1	3.07	
August 2019	1	2.52	
September 2019	1.1	2.49	
October 2019	5.5	2.80	Drought /windy conditions and bushfires causing poor AQ in the area
November 2019	2.5	2.95	
December 2019	5.7	3.15	Drought /windy conditions and bushfires causing poor AQ in the area



**Figure 5:** Total Insoluble Matter, rolling annual average, and annual criterion ( $\text{g}/\text{m}^2/\text{month}$ ) for the East Guyong Quarry as measured at DDG-4 during 2019.