



East Guyong Quarry

2018 Dust Deposition Monitoring

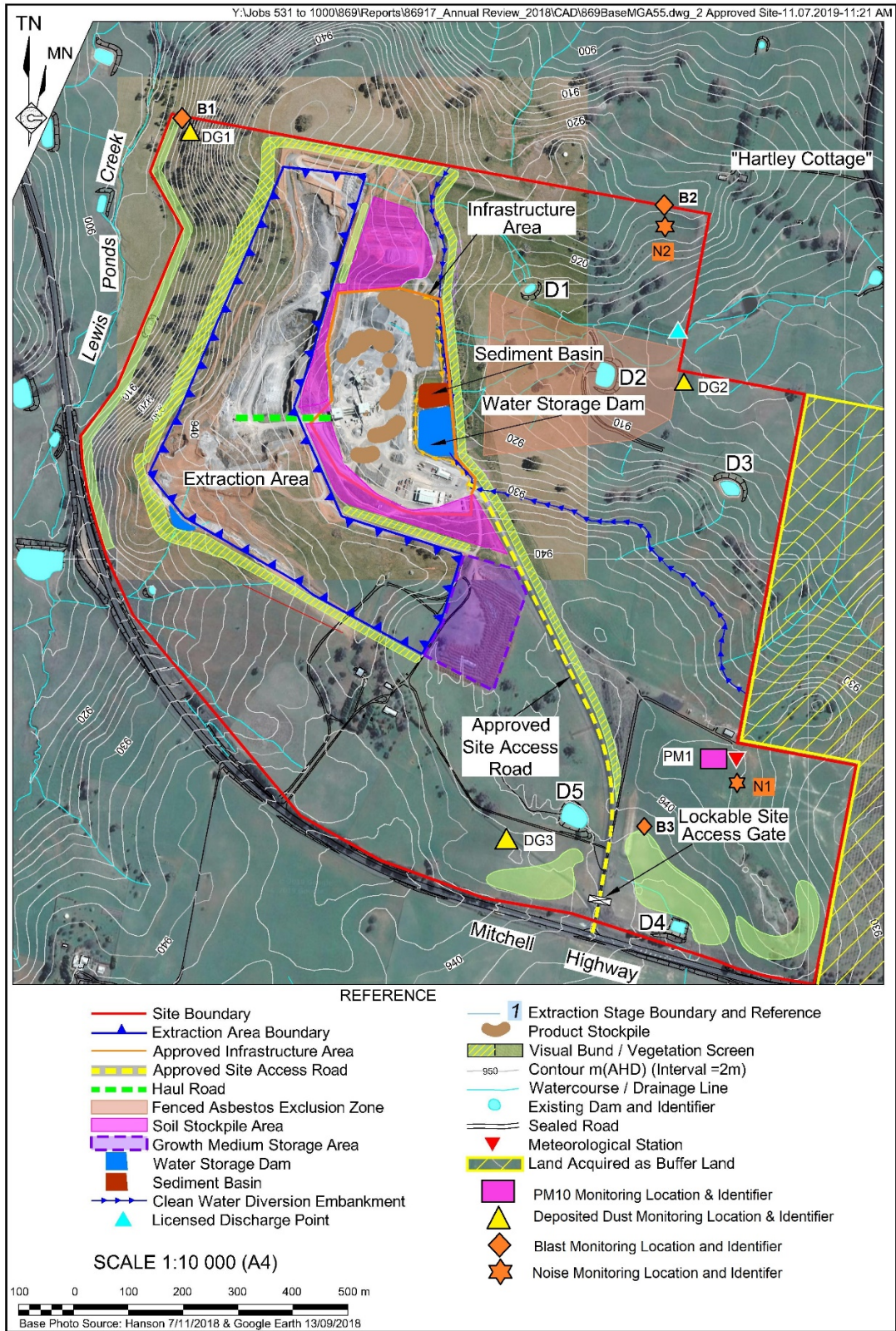


Figure 1: Monitoring locations – East Guyong Quarry ($g/m^2/month$) (2019)

Table 1: Monthly Total Insoluble Matter (g/m^2 month) measured for Dust Deposition Gauge 1 during 2018 and calculated rolling annual average Total Insoluble Matter (g/m^2 month).

Month and Year	Total Insoluble Matter	Rolling Annual Average	Comments
January 2018	0.6	0.60	
February 2018	1.2	0.90	
March 2018	1.3	1.03	
April 2018	0.9	1.00	
May 2018	2.4	1.28	
June 2018	1	1.23	
July 2018	0.5	1.13	
August 2018	0.5	1.05	
September 2018	0.9	1.03	
October 2018	1.4	1.07	
November 2018	2.7	1.22	
December 2018	N/A	1.22	

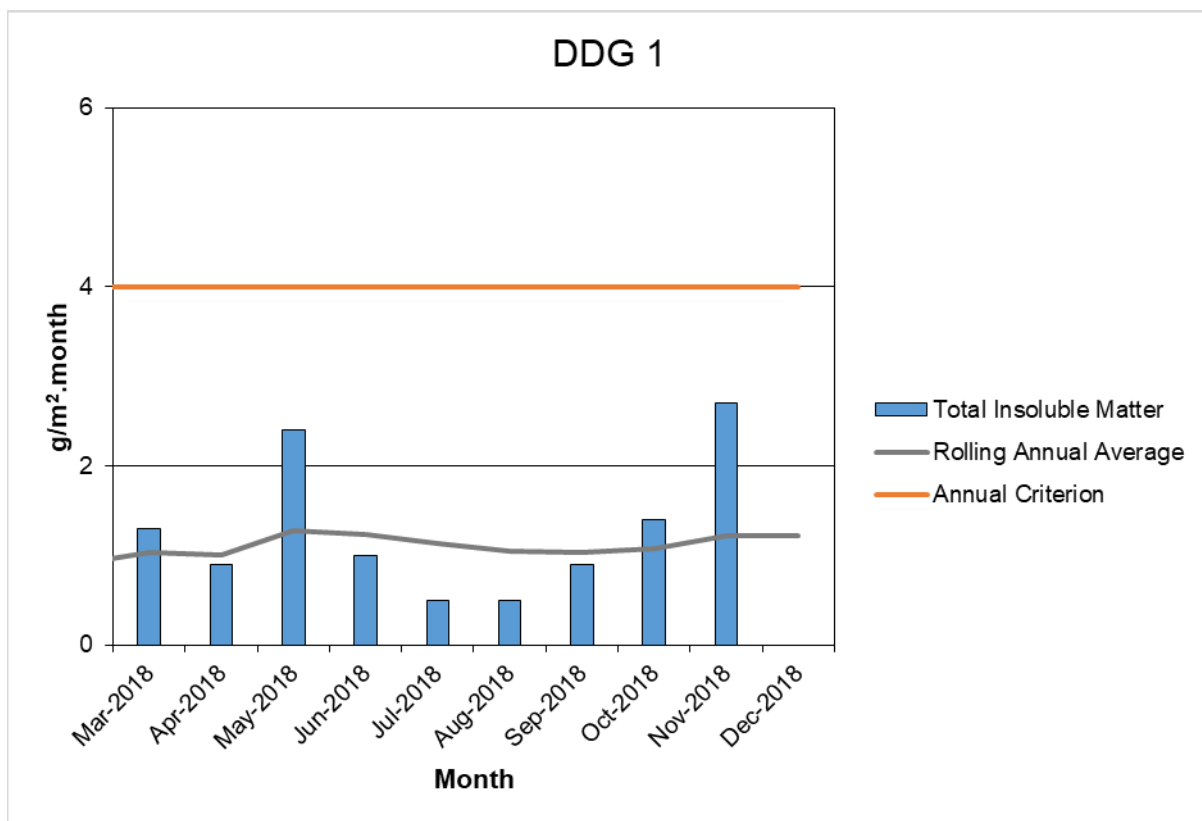


Figure 2: Total Insoluble Matter, rolling annual average, and annual criterion ($\text{g}/\text{m}^2/\text{month}$) for the East Guyong Quarry as measured at DDG-1 during 2018.

Table 2: Monthly Total Insoluble Matter ($\text{g}/\text{m}^2/\text{month}$) measured for Dust Deposition Gauge 2 during 2018 and calculated rolling annual average Total Insoluble Matter ($\text{g}/\text{m}^2/\text{month}$).

Month and Year	Total Insoluble Matter	Rolling Annual Average	Comments
January 2018	0.5	0.50	
February 2018	2.1	1.30	
March 2018	2.8	1.80	
April 2018	5.4	2.70	
May 2018	15.7	5.30	
June 2018	4.2	5.12	
July 2018	3.3	4.86	
August 2018	1.6	4.45	
September 2018	1.1	4.08	
October 2018	1.6	3.83	
November 2018	1	3.57	
December 2018	2.4	3.48	

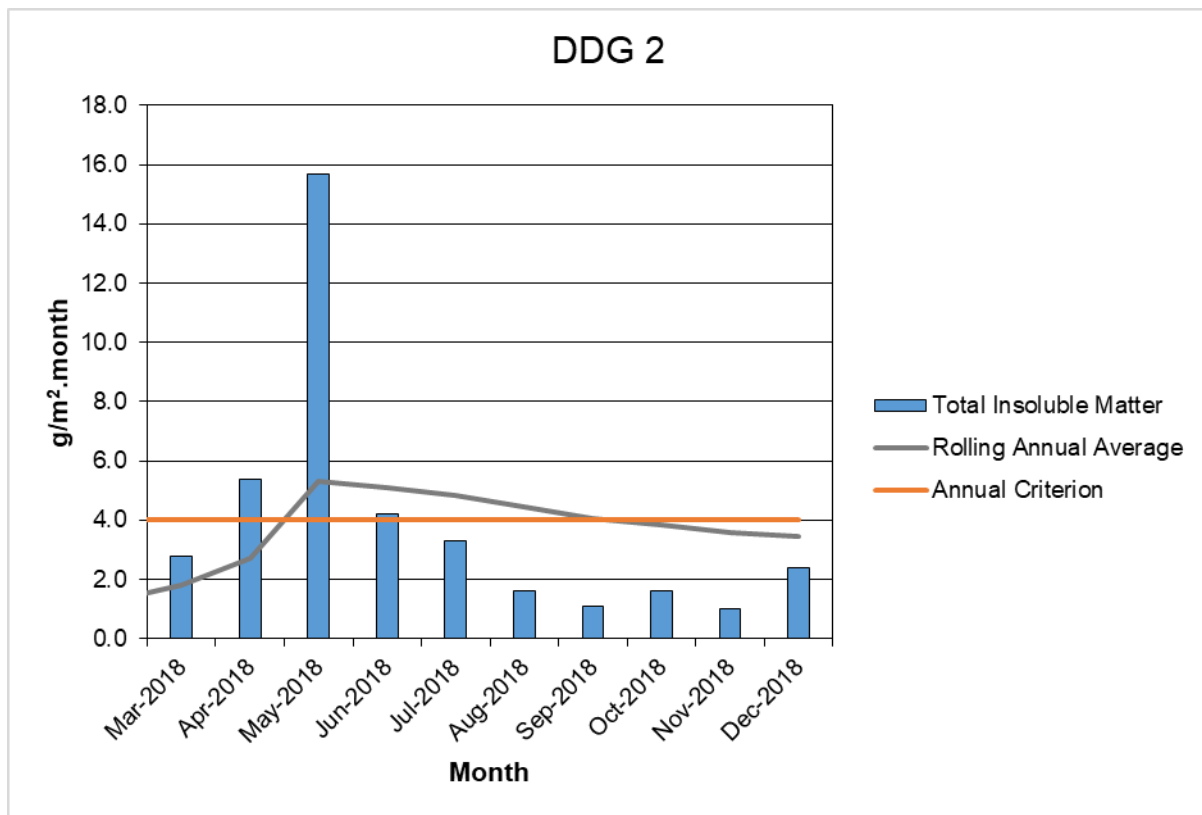


Figure 3: Total Insoluble Matter, rolling annual average, and annual criterion ($\text{g}/\text{m}^2/\text{month}$) for the East Guyong Quarry as measured at DDG-2 during 2018.

Table 3: Monthly Total Insoluble Matter ($\text{g}/\text{m}^2/\text{month}$) measured for Dust Deposition Gauge 3 during 2018 and calculated rolling annual average Total Insoluble Matter ($\text{g}/\text{m}^2/\text{month}$).

Month and Year	Total Insoluble Matter	Rolling Annual Average	Comments
January 2018	0.8	0.80	
February 2018	0.8	0.80	
March 2018	0.7	0.77	
April 2018	0.2	0.63	
May 2018	1.2	0.74	
June 2018	2.6	1.05	
July 2018	1.7	1.14	
August 2018	1.2	1.15	
September 2018	1.7	1.21	
October 2018	2.3	1.32	
November 2018	2.1	1.39	
December 2018	4.9	1.68	

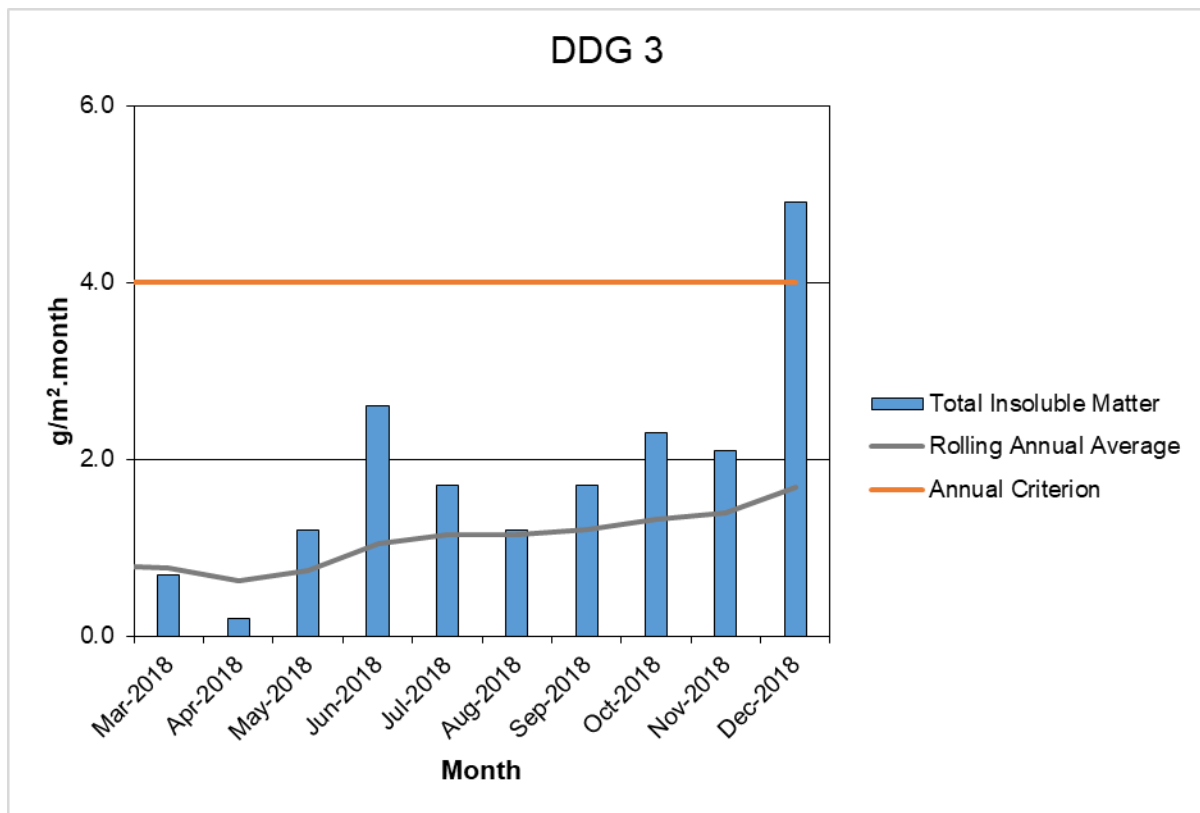


Figure 4: Total Insoluble Matter, rolling annual average, and annual criterion ($\text{g}/\text{m}^2/\text{month}$) for the East Guyong Quarry as measured at DDG-3 during 2018.

Table 4: Monthly Total Insoluble Matter ($\text{g}/\text{m}^2/\text{month}$) measured for Dust Deposition Gauge 4 during 2018 and calculated rolling annual average Total Insoluble Matter ($\text{g}/\text{m}^2/\text{month}$).

Month and Year	Total Insoluble Matter	Rolling Annual Average	Comments
January 2018	N/A		
February 2018	N/A		
March 2018	N/A		
April 2018	N/A		
May 2018	2.3	2.30	
June 2018	1.7	2.00	
July 2018	1.4	1.80	
August 2018	7.6	3.25	
September 2018	1.4	2.88	
October 2018	1.8	2.70	
November 2018	0.7	2.41	
December 2018	3.3	2.53	

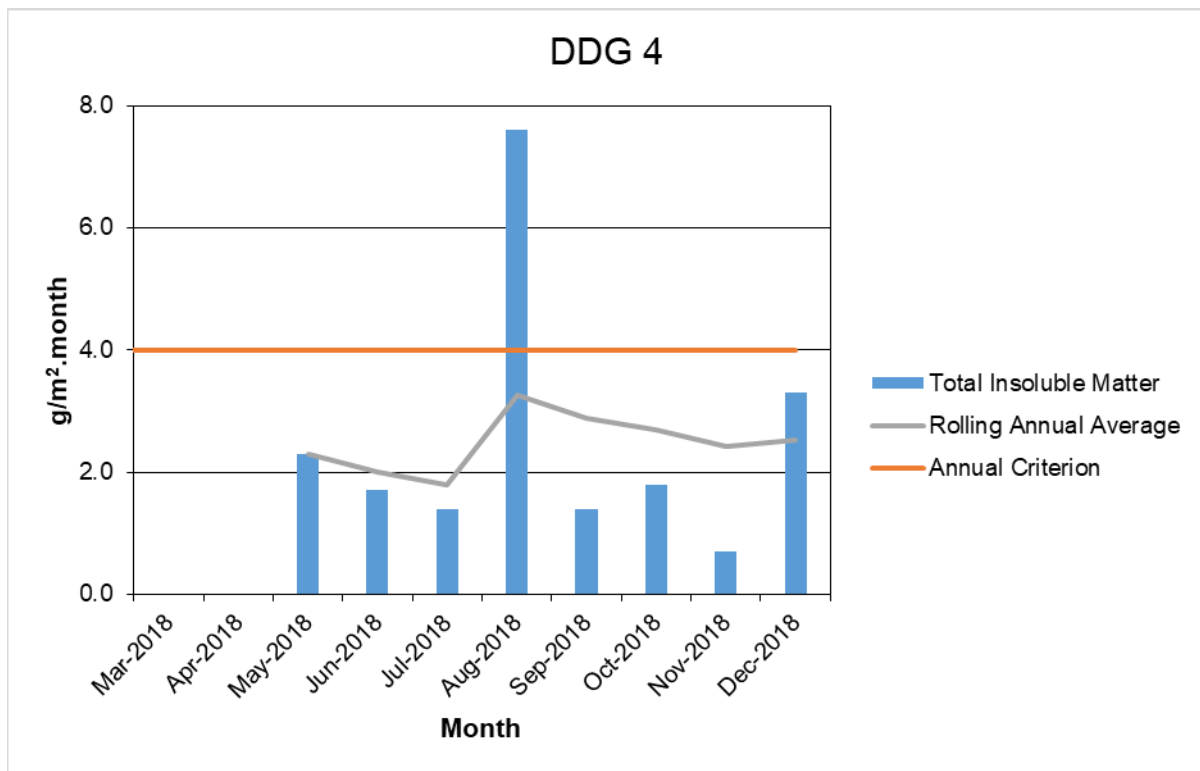


Figure 5: Total Insoluble Matter, rolling annual average, and annual criterion ($\text{g}/\text{m}^2/\text{month}$) for the East Guyong Quarry as measured at DDG-4 during 2018.