

Monthly Report

CLIENT: Hanson Construction Materials PTY LTD
SITE: Calga Weed Control 2018 – 19
MONTH: April 2019

DESCRIPTION OF WORK

Zone	Type of Work	Weed Type	Work Description
Roadside/ Sandstone Buns	Maintenance	Herbaceous	<ul style="list-style-type: none"> High volume spraying was conducted using a solution of 2% Roundup Biactive® targeting <i>Bidens pilosa</i> (Farmers Friends), <i>Sonchus oleraceus</i> (Sow Thistle), <i>Phytolacca octandra</i> (Inkweed) <i>Taraxacum officinale</i> (Dandelion), and <i>Andropogon virginicus</i> (Whiskey Grass).
Area CD6	Primary	Woody	<ul style="list-style-type: none"> Cut-and-paint and frill-and-fill was conducted using chainsaws and neat Roundup Biactive®, targeting <i>Pinus radiata</i> (Monterey Pine).

Management Issues:

- Wild dog tracks are evident in area 1 to 4, a 1080 baiting program could be implemented to lessen the presence of feral animals.
- A temporary fence around slurry pit could deter wildlife from entering this area.

Site Progress:

All weeds amongst revegetation zones, road edges and mustering areas have now been treated with herbicide or physically removed.

Fauna Recorded:

- Wild Dog – *Canis lupus familiaris*
- Swamp Wallaby – *Wallabia bicolor*
- Wedge Tail Eagle – *Aquila audax*



Figure 1 – Herbicide spraying in Area 3

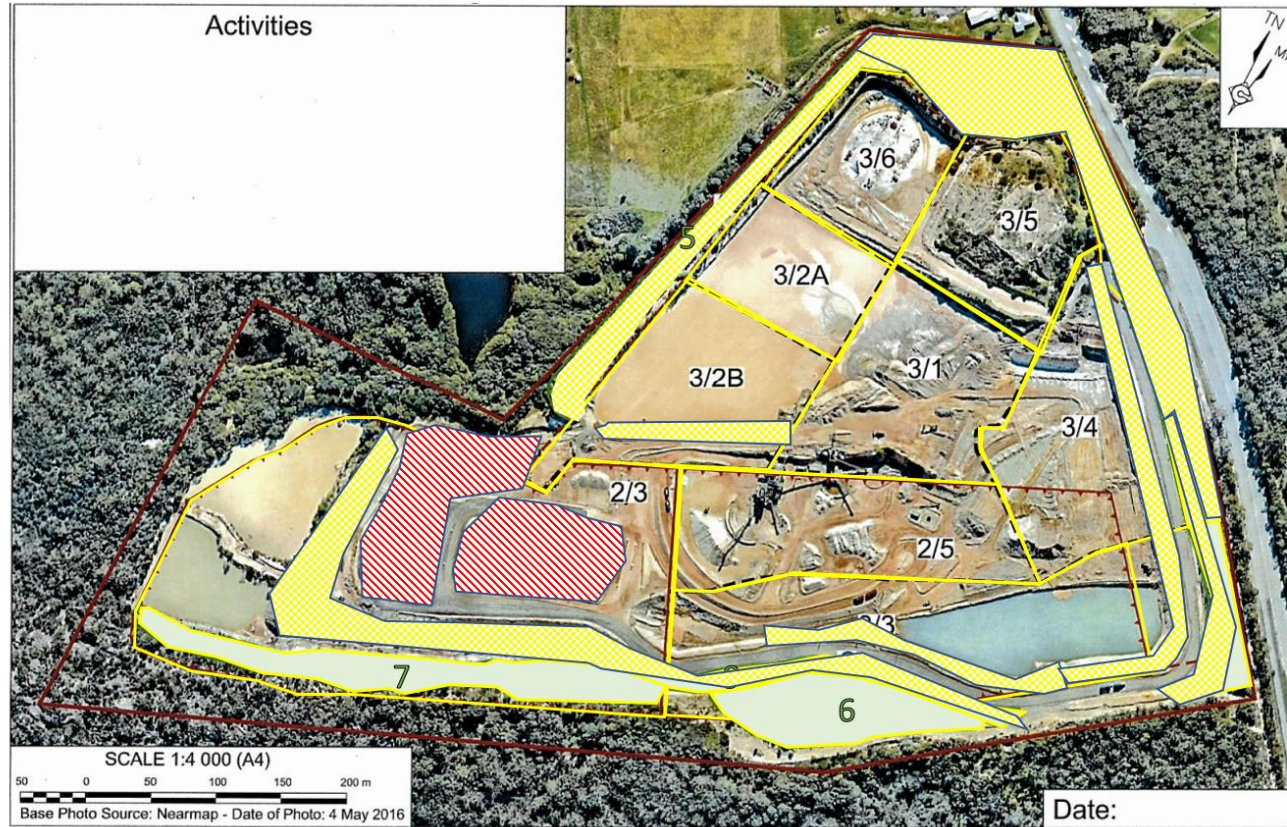


Figure 2 – Frill-and-fill of *P. radiata*



Figure 3 – Felling of *P. radiata*

Monthly Report – Calga Quarry Rehabilitation 2019



Source:

Hanson

Date: April 2019



Calga Sand Quarry

NOT TO SCALE



Site Boundary



= Other

	Woody	Herbaceous	Vines
Primary			
Secondary			
Maintenance			