

Monthly Report

Toolijooa Pty Ltd ABN 64 095 536 388
 10/103 Glenwood Drive Thornton NSW 2322
 PO Box 406 Mona Vale NSW 1660
 0414 657 859 Fax: 02 9986 1858

CLIENT: Hanson Sand Mine
SITE: Calga Quarry – Revegetation and Weed Management
MONTH: March 2019

DESCRIPTION OF WORK

Zone	Type of Work	Weed Type	Work Description
Revegetation Area 6	Maintenance	Herbaceous	<ul style="list-style-type: none"> Brush-cutting was conducted throughout the targeting <i>Bidens pilosa</i> (Farmers Friends), <i>Sonchus oleraceus</i> (Sow Thistle), <i>Phytolacca octandra</i> (Inkweed) <i>Taraxacum officinale</i> (Dandelion), and <i>Andropogon virginicus</i> (Whiskey Grass).
		Vines	<ul style="list-style-type: none"> Hand-removal and skirting was conducted in planted areas, targeting <i>Araujia sericifera</i> (Moth Vine)
3/4	Primary	Woody	<ul style="list-style-type: none"> Cut-and-paint was conducted along the fence-line using neat Roundup Biactive®, targeting <i>Lantana camara</i> (Lantana)

Management Issues:

- Wild dog tracks are evident in area 1 to 4, a 1080 baiting program could be implemented to lessen the presence of feral animals.
- A temporary fence around slurry pit could also deter wildlife from entering this area.

Site Progress:

All weeds amongst revegetation zones, road edges and mustering areas have now been chemically treated or physically removed.

Fauna Recorded:

- Wild Dog – *Canis lupus familiaris*
- Swamp Wallaby – *Wallabia bicolor*
- Wedge Tail Eagle – *Aquila audax*



Figure 1 – Before/After herbicide application from previous visits



Figure 2 – Before/After brush-cutting works

Monthly Report – Calga Quarry Rehabilitation 2019

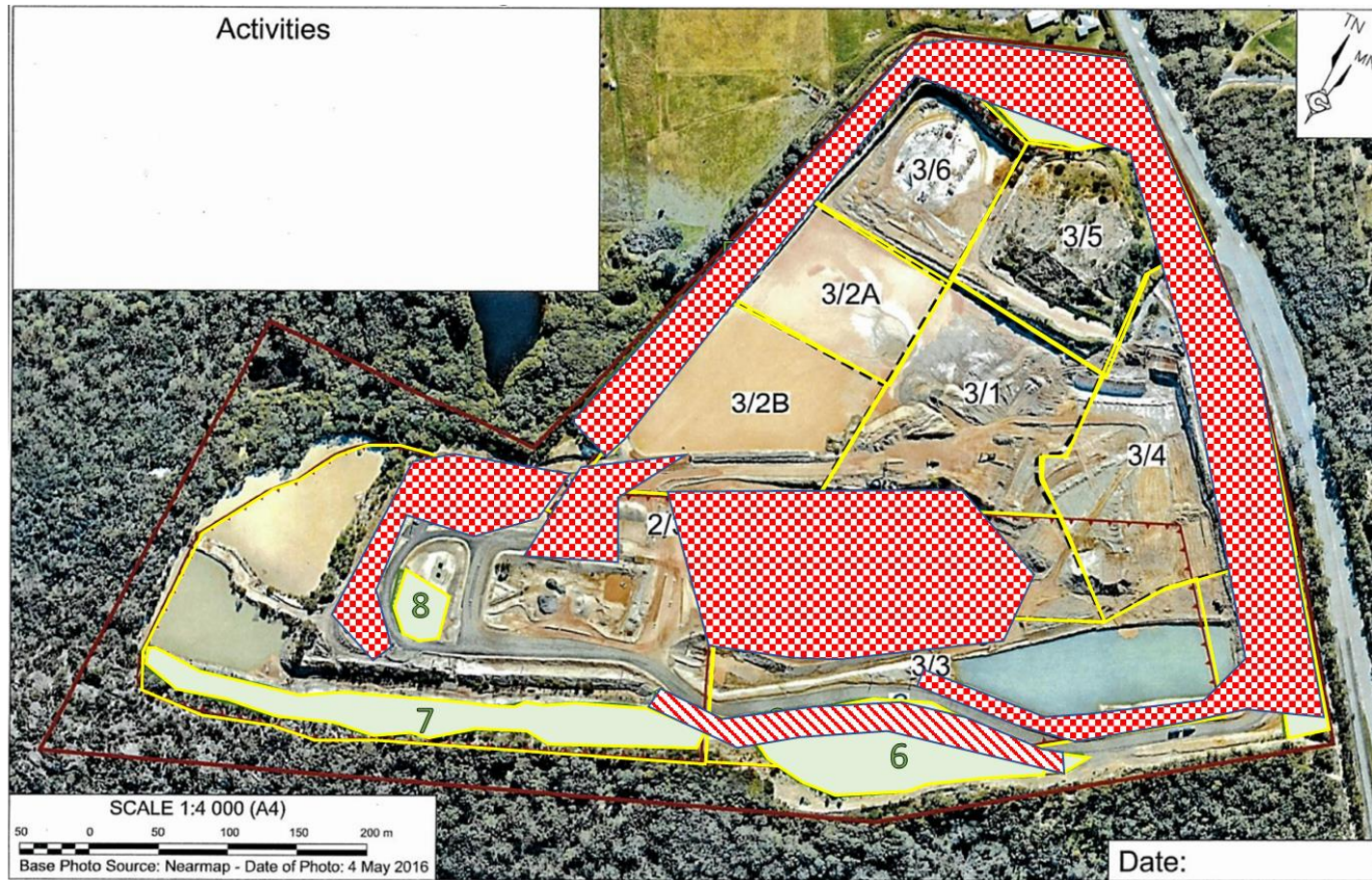


Image Source: Hanson

Hanson Construction Materials Pty Ltd

Date: March 2019



Calga Sand Quarry

NOT TO SCALE

NORTH

Site Boundary

