

Monthly Report

Toolijooa Pty Ltd ABN 64 095 536 388
10/103 Glenwood Drive Thornton NSW 2322
PO Box 406 Mona Vale NSW 1660
0414 657 859 Fax: 02 9986 1858

CLIENT: Hanson Construction Materials Pty Ltd
SITE: Calga Quarry – Revegetation and Weed Management
MONTH: November 2018

DESCRIPTION OF WORK

Zone	Type of Work	Weed Type	Work Description
Area – 8, 7, 6, 3, 1, 5	Primary	Herbaceous, Woody & Vines	<ul style="list-style-type: none"> High volume spraying was conducted using an herbicide solution of 2% Roundup Biactive® species targeting <i>Bidens pilosa</i> (Cobblers Pegs), <i>Sonchus oleraceus</i> (Sowthistle), <i>Phytolacca octandra</i> (Inkweed) <i>Taraxacum officinale</i> (Dandelion), <i>Andropogon virginicus</i> (Whiskey Grass), <i>Vebena bonariensis</i> (Purple Top), <i>Setaria gracilis</i> (Marsh Bristlegrass), and <i>Conyza bonarensis</i> (Fleabane) Brush cutting was conducted, focusing on tall plumes of woodys and grasses in the revegetated area.

Management Issues:

- Wild dog tracks are evident in area 1 to 4.

Site Progress:

- All weeds amongst revegetation zones, road edges and mustering areas have now been treated or removed, thus improving the visual aesthetic of the site greatly.

Fauna Recorded:

- WILD DOG – *Canis lupus familiaris*
- SWAMP WALLABY – *Wallabia bicolor*
- WEDGE TAIL EAGLE – *Aquila audax*

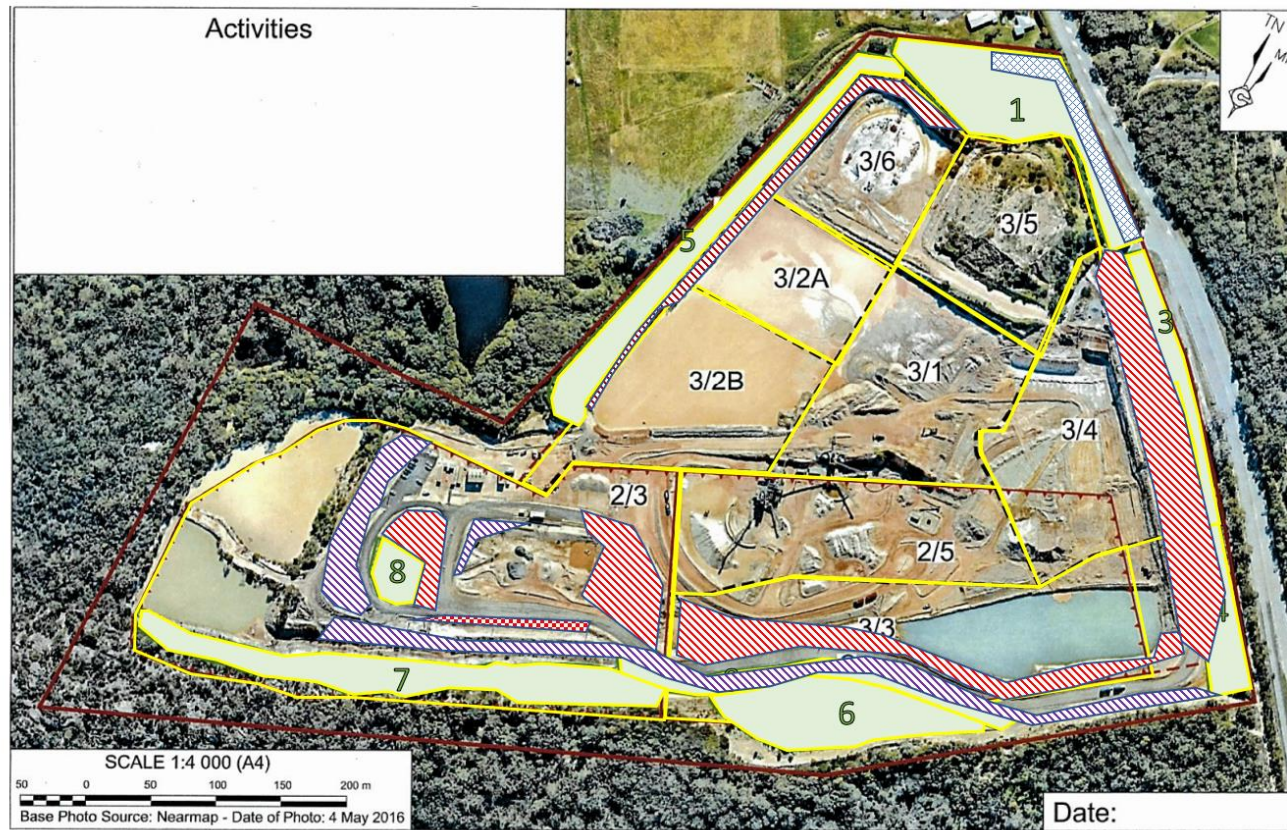


Figure 1: Before/After herbicide application



Figure 2: Before/After herbicide application

Monthly Report – Calga Quarry Rehabilitation 2018



Source:

Hanson

Date: November 2018



Calga Sand Quarry

NOT TO SCALE



Site Boundary

Other

	Woody	Herbaceous	Vines
Primary			
Secondary			
Maintenance			