

## Monthly Report

Toolijooa Pty Ltd ABN 64 095 536 388  
10/103 Glenwood Drive Thornton NSW 2322  
PO Box 406 Mona Vale NSW 1660  
0414 657 859 Fax: 02 9986 1858

**CLIENT:** Hanson Sand Mine

**SITE:** Calga Quarry – Revegetation and Weed Management

**MONTH:** OCTOBER 2018

### DESCRIPTION OF WORK

Zone	Type of Work	Weed Type	Work Description
Area – 8, 7, 2/3, 6, 3/3	Primary	Herbaceous	<ul style="list-style-type: none"> <li>Low volume spraying was conducted using a solution of 1% Roundup Biactive® targeting <i>Bidens pilosa</i> (Farmers Friends), <i>Sonchus oleraceus</i> (Sow Thistle), <i>Phytolacca octandra</i> (Inkweed) <i>Taraxacum officinale</i> (Dandelion), and <i>Andropogon virginicus</i> (Whiskey Grass).</li> </ul>

#### Notes:

- Map attached.

#### Management Issues:

- Wild dog tracks are evident in area 1 to 4, a 1080 baiting program should be implemented to lessen the site of feral animals.
- A temporary fence around slurry pit would deter wildlife from entering this area.

#### Site Progress:

All weeds amongst revegetation zones, road edges and mustering areas have now been chemically treated or physically removed.

#### Fauna Recorded:

- Wild Dog – *Canis lupus familiaris*
- Swamp Wallaby – *Wallabia bicolor*
- Wedge Tail Eagle – *Aquila audax*



*Figure 1 – Before/After herbicide application along roads.*

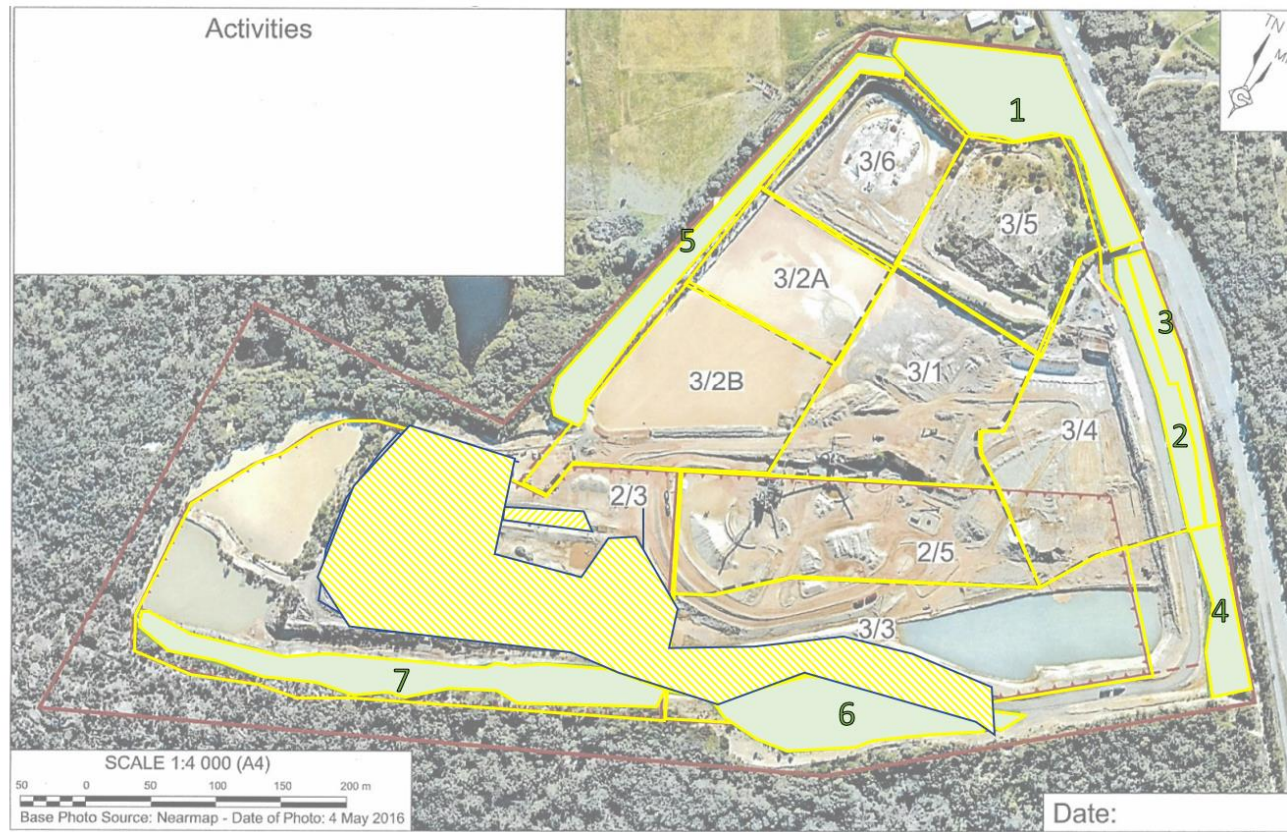


*Figure 2 – Before/After herbicide application near building*



*Figure 3 – Before/After herbicide application to invasive tree species in sandstone bun areas*

# Monthly Report – Calga Quarry Rehabilitation Site 2018



Source:

Hanson

Date: October 2018



## Calga Sand Quarry



  = Site Boundary

  = Other

	Woody	Herbaceous	Vines
Primary	<span style="background-color: #f4a460; border: 1px solid black; display: inline-block; width: 15px; height: 15px;"></span>	<span style="background-color: #f4a460; border: 1px solid black; display: inline-block; width: 15px; height: 15px;"></span>	<span style="background-color: #f4a460; border: 1px solid black; display: inline-block; width: 15px; height: 15px;"></span>
Secondary	<span style="background-color: #f4a460; border: 1px solid black; display: inline-block; width: 15px; height: 15px;"></span>	<span style="background-color: #f4a460; border: 1px solid black; display: inline-block; width: 15px; height: 15px;"></span>	<span style="background-color: #f4a460; border: 1px solid black; display: inline-block; width: 15px; height: 15px;"></span>
Maintenance	<span style="background-color: #ffff00; border: 1px solid black; display: inline-block; width: 15px; height: 15px;"></span>	<span style="background-color: #ffff00; border: 1px solid black; display: inline-block; width: 15px; height: 15px;"></span>	<span style="background-color: #ffff00; border: 1px solid black; display: inline-block; width: 15px; height: 15px;"></span>