

Monthly Report

Toolijooa Pty Ltd ABN 64 095 536 388
 10/103 Glenwood Drive Thornton NSW 2322
 PO Box 406 Mona Vale NSW 1660
 0414 657 859 Fax: 02 9986 1858

CLIENT: Hanson

SITE: Calga Quarry – Weed Control

MONTH: September 2018

DESCRIPTION OF WORK

Zone	Type of Work	Weed Type	Work Description
Area – 6, 4 9, 7, 8	Primary	Herbaceous	<ul style="list-style-type: none"> Brush-cutting was conducted on perennial weeds such as <i>Conzya bonariensis</i> (Fleabane) and <i>Bidens pilosa</i> (Cobblers Pegs).
Sandstone Buns Area –1 & 5	Primary	Woody	<ul style="list-style-type: none"> Cut-and-paint was conducted using a chainsaw and neat Roundup Biactive® targeting <i>Pinus radiata</i> (Radiata Pine)
		Herbaceous	<ul style="list-style-type: none"> Brush-cutting was conducted following the road sides to remove perennial weeds such as <i>C. bonariensis</i> and <i>B. pilosa</i>

Management Issues:

- Wild dog tracks have been observed in Area 1 to 4.

Site Progress:

- Tree maintenance on buns and access roads has been greatly improved.
- Planted areas have had their tree guards removed.

Fauna Recorded:

- Wild Dog – *Canis lupus familiaris*
- Swamp Wallaby – *Wallabia bicolor*
- Wedge Tail Eagle – *Aquila audax*



Figure 1 – Cut-and-Paint of *P. radiata* seedlings



Figure 2 – Removal of trees in Sandstone Bun areas



Figure 3 – Before/After Brush-cutting herbaceous weeds near roadside



Figure 4 – Felling of *P. radiata*

Monthly Report – Calga Quarry Weed Control 2018-19

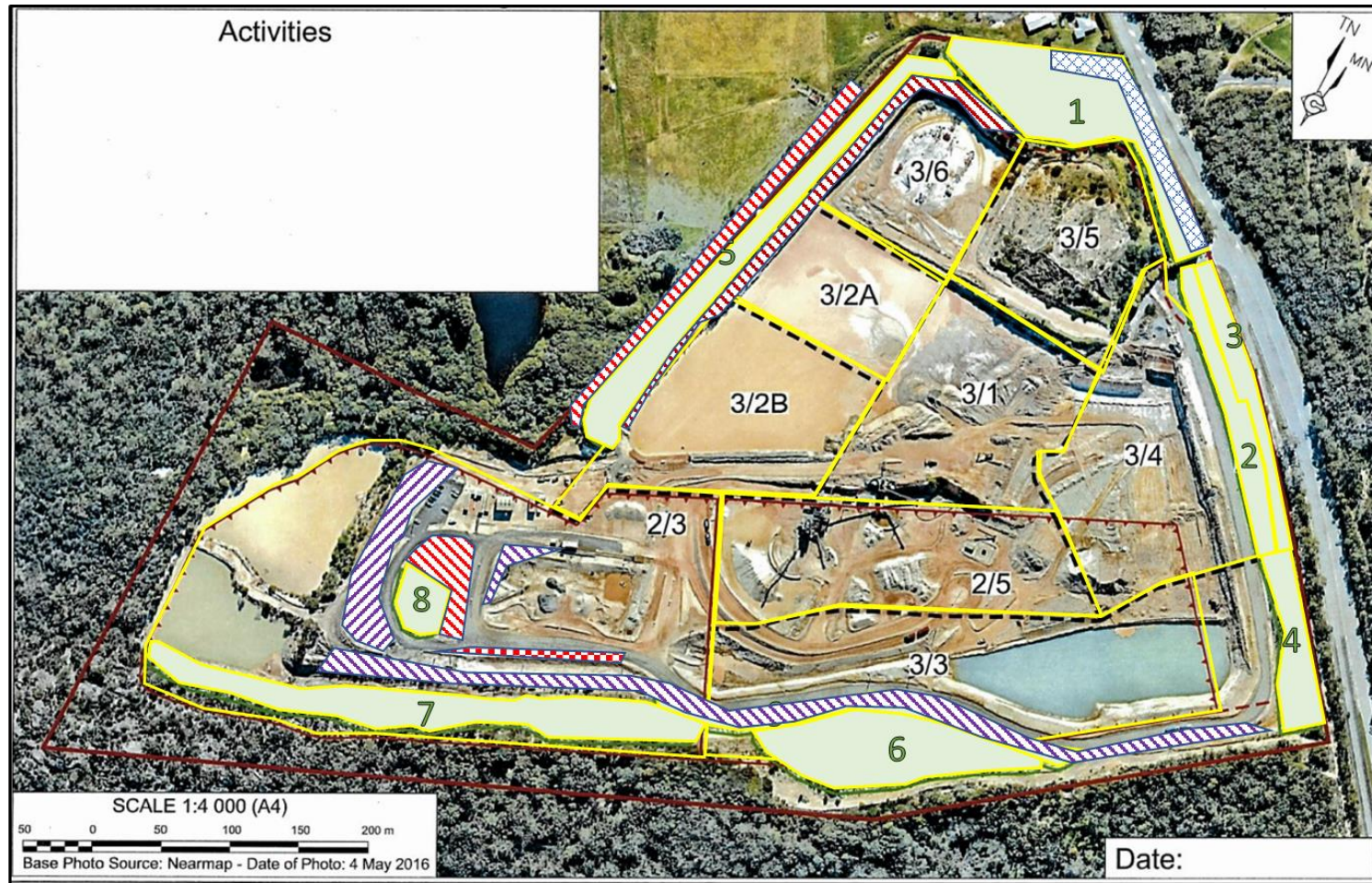


Image source: Hanson

Hanson

Date: September 2018



Calga Sand Quarry

