

Asbestos Fibre Air Monitoring Report

Our Ref: C107605:SO2001094.001-20160129
 Client: Hanson Construction Materials Pty Ltd
 Client Address: Locked Bag 5260
 Parramatta NSW 2124
 Attention: Pere Riini - Quarry Manager
 Job Location: East Guyong Quarry, Mitchell Highway, East Guyong NSW
 Report Date: Tuesday 9th February 2016
 Test Date: Friday 29th January 2016
 Sampling Type: Control
 Sampled By: Pumps On: Pere Riini (Hanson)
 Pumps Off: Pere Riini (Hanson)

Method: Filters examined in accordance with Safe Work Australia's Guidance Note on the Membrane Filter Method for the Estimation of Airborne Asbestos Fibres, 2nd Edition, 2005 [NOHSC:3003: (2005)] – Refer Internal Laboratory Test Method NALAB 301.

Filter No.	Test Type Sample Location	Sample Period Start-Finish	Average Flow Rate (L/min)	Fibres/ Fields	Result(s) Fibres/mL
Background asbestos air monitoring throughout various locations across the site					
C0032823	Field Blank	–	–	0.0/100	–
C0046179	Location 1 – Near Southern Boundary of Site, Access Road to Residence (No.3472) off Mitchell Highway, approx. 120 metres North of South Site Boundary – On barbed wire fence	0732 – 1445	1.00	0.0/100	< 0.01
C0032819	Location 3 – Near Southern Boundary (SE Corner) of Site, Adjacent to New Access Road Entry (No.3410) off Mitchell Highway, approx. 30 metres from South Site Boundary – On barbed wire fence	0736 – 1449	1.00	0.0/100	< 0.01
C0029839	Location 4 – Near Eastern Boundary (near SE Corner) of Site, approx. 70 metres West of Shed, Access Road – On barbed wire fence	0742 – 1453	1.00	0.0/100	< 0.01
C0029675	Location 5 – Near Eastern Boundary (near Centre) of Site, approx. 50 metres West of East Site Boundary – On fencing post	0749 – 1501	1.00	0.0/100	< 0.01

Filter No.	Test Type Sample Location	Sample Period Start-Finish	Average Flow Rate (L/min)	Fibres/ Fields	Result(s) Fibres/mL
C0046249	Location 6 – Western Boundary of Proposed Quarry Pit (near Western Site Boundary) – On barbed wire fence	0754 – 1508	1.00	0.0/100	< 0.01
C0032825	Location 8 – Western Boundary (near NW Corner) of Site – On barbed wire fence	0759 – 1515	1.00	0.0/100	< 0.01
C0032838	Location 10 – Near Northern Boundary of Site (near NE Corner Site) – On fencing post	0816 – 1522	1.00	0.0/100	< 0.01

Note: Pere Riini of Hanson Construction Materials Pty Ltd has been formally trained as a third party for volume measurement. Greencap – NAA Pty Ltd assume responsibility for the data collected.



Approved Counter: Simon Day



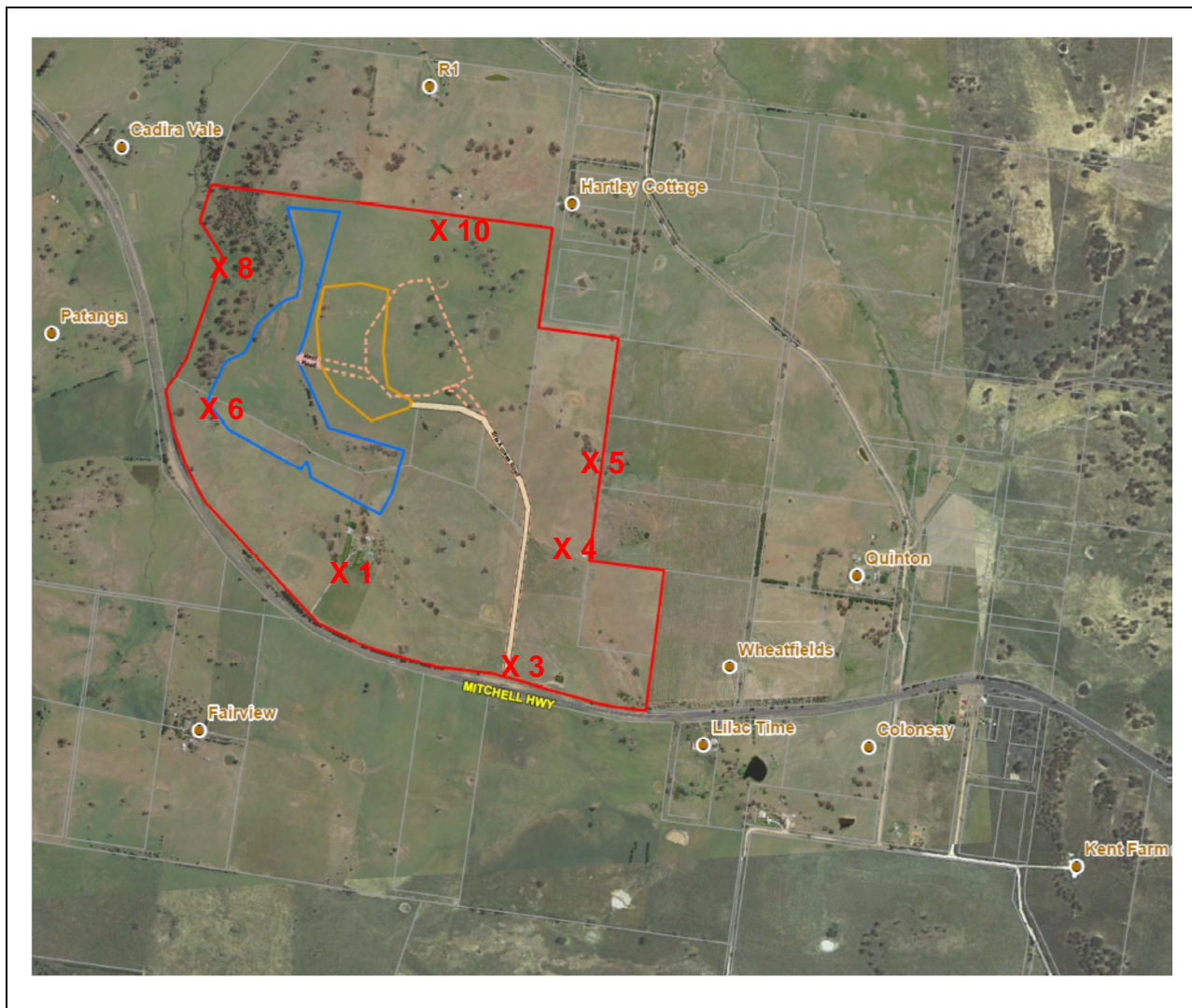
Approved Signatory: Simon Day



This document shall not be reproduced, except in full.
Accredited for compliance with ISO/IEC 17025.
Corporate Site No. 5450, Site No. 3402 Sydney
Laboratory.

The results of the tests, calibrations and/or
measurements included in this document are
traceable to Australian/national standards.

Figure 1 – Air Monitoring Location



**Air Monitoring Sampling Plan
East Guyong Quarry Site**

Monitoring Date:
Friday 29th January 2016

Legend

- X 1 Air monitoring locations
- Project Boundary
- Quarry Boundary
- Infrastructure Area Boundary

Air Monitoring Location Coordinates

Location 1:	709,104mE ; 6300,660mN	Location 6:	708,803mE ; 6301,185mN
Location 3:	709,601mE ; 6300,370mN	Location 8:	708,824mE ; 6301,587mN
Location 4:	709,729mE ; 6300,716mN	Location 10:	709,465mE ; 6301,633mN
Location 5:	709,870mE ; 6300,905mN		

Weather Conditions

<i>General</i>	Showers, Overcast	<i>Wind Direction</i>	
<i>Rainfall</i>		<i>Wind Speed</i>	