

## Asbestos Fibre Air Monitoring Report

**Our Ref:** C107605:J142292.002-20151204  
**Client:** Hanson Construction Materials Pty Ltd  
**Client Address:** Locked Bag 5260  
 Parramatta NSW 2124  
**Attention:** Pere Riini - Quarry Manager  
**Job Location:** East Guyong Quarry, Mitchell Highway, East Guyong NSW  
**Report Date:** Thursday 10th December 2015  
**Test Date:** Friday 4th December 2015  
**Sampling Type:** Control  
**Sampled By:** **Pumps On:** Pere Riini (Hanson)  
**Pumps Off:** Pere Riini (Hanson)

**Method:** Filters examined in accordance with Safe Work Australia's Guidance Note on the Membrane Filter Method for the Estimation of Airborne Asbestos Fibres, 2nd Edition, 2005 [NOHSC:3003: (2005)] – Refer Internal Laboratory Test Method NALAB 301.

Filter No.	Test Type Sample Location	Sample Period Start-Finish	Average Flow Rate (L/min)	Fibres/ Fields	Result(s) Fibres/mL
Background asbestos air monitoring throughout various locations across the site					
G1081811	Field Blank	–	–	0.0/100	–
G0489993	Location 1 – Near Southern Boundary of Site, Access Road to Residence (No.3472) off Mitchell Highway, approx. 120 metres North of South Site Boundary – On barbed wire fence	0745 – 1401	1.00	0.0/100	< 0.01
G0405410	Location 3 – Near Southern Boundary (SE Corner) of Site, Adjacent to New Access Road Entry (No.3410) off Mitchell Highway, approx. 30 metres from South Site Boundary – On barbed wire fence	0749 – 1407	1.00	0.0/100	< 0.01
G1061322	Location 4 – Near Eastern Boundary (near SE Corner) of Site, approx. 70 metres West of Shed, Access Road – On barbed wire fence	0754 – 1411	1.00	0.0/100	< 0.01
G1081809	Location 5 – Near Eastern Boundary (near Centre) of Site, approx. 50 metres West of East Site Boundary – On fencing post	0802 – 1416	1.00	0.0/100	< 0.01

Filter No.	Test Type Sample Location	Sample Period Start-Finish	Average Flow Rate (L/min)	Fibres/ Fields	Result(s) Fibres/mL
G1081807	Location 6 – Western Boundary of Proposed Quarry Pit (near Western Site Boundary) – On barbed wire fence	0809 – 1422	1.00	0.0/100	< 0.01
G0490181	Location 8 – Western Boundary (near NW Corner) of Site – On barbed wire fence	0815 – 1427	1.00	0.0/100	< 0.01
G1081800	Location 10 – Near Northern Boundary of Site (near NE Corner Site) – On fencing post	0822 – 1433	1.00	0.0/100	< 0.01

Note: Pere Riini of Hanson Construction Materials Pty Ltd has been formally trained as a third party for volume measurement. Greencap – NAA Pty Ltd assume responsibility for the data collected.



**Approved Counter:** Holly Cox



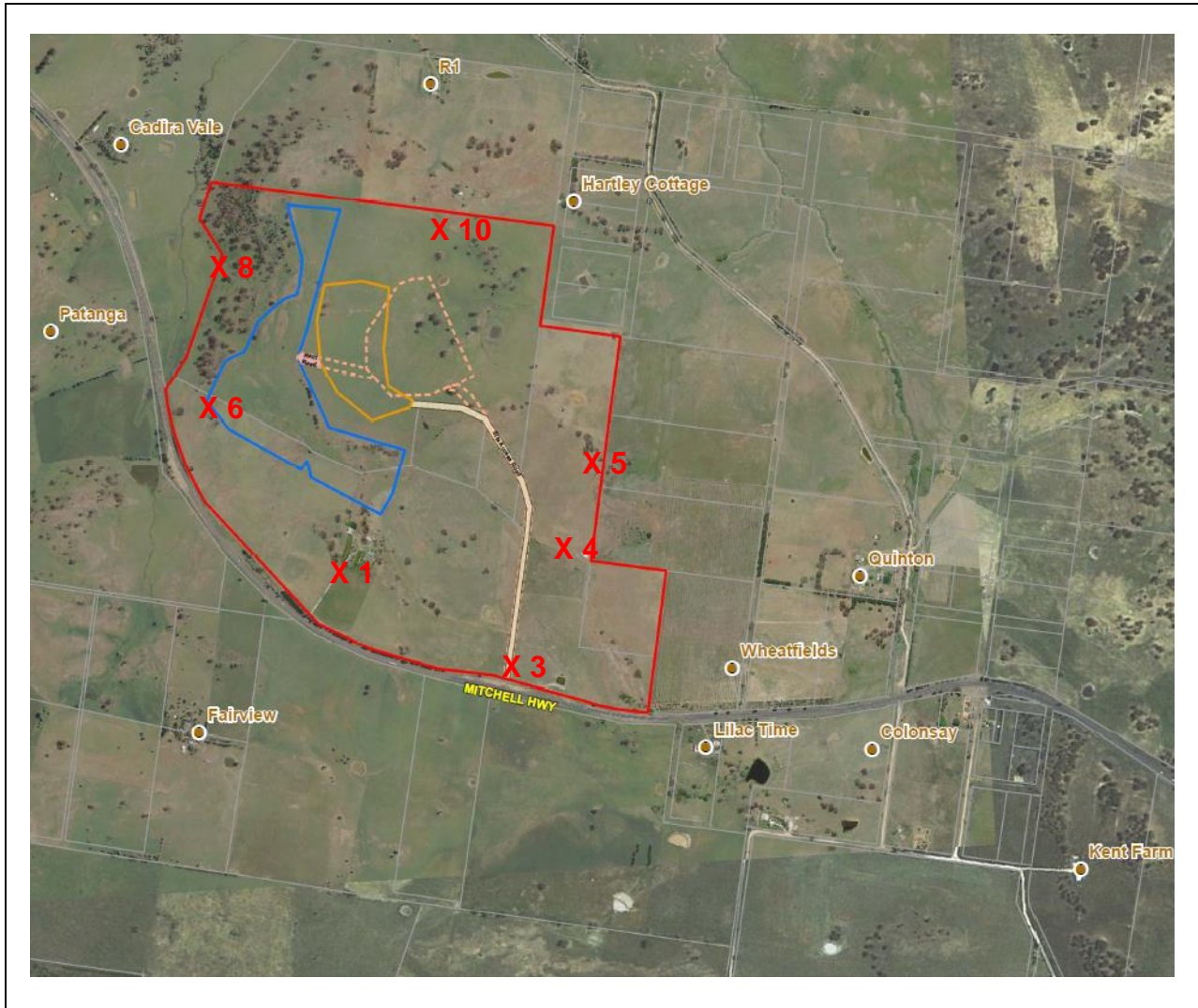
**Approved Signatory:** Holly Cox



This document shall not be reproduced, except in full.  
Accredited for compliance with ISO/IEC 17025.  
Corporate Site No. 5450, Site No. 3402 Sydney Laboratory.

The results of the tests, calibrations and/or measurements included in this document are traceable to Australian/national standards.

Figure 1 – Air Monitoring Location



**Air Monitoring Sampling Plan  
East Guyong Quarry Site**

**Monitoring Date:  
Friday 4<sup>th</sup> December 2015**

**Legend**

- X 1** Air monitoring locations
- Project Boundary
- Quarry Boundary
- Infrastructure Area Boundary

**Air Monitoring Location Coordinates**

<b>Location 1:</b>	709,104mE ; 6300,660mN	<b>Location 6:</b>	708,803mE ; 6301,185mN
<b>Location 3:</b>	709,601mE ; 6300,370mN	<b>Location 8:</b>	708,824mE ; 6301,587mN
<b>Location 4:</b>	709,729mE ; 6300,716mN	<b>Location 10:</b>	709,465mE ; 6301,633mN
<b>Location 5:</b>	709,870mE ; 6300,905mN		

**Weather Conditions**

<b>General</b>	Fine, Windy (Dry)	<b>Wind Direction</b>	
<b>Rainfall</b>		<b>Wind Speed</b>	