



A GREENCAP
CONSULTING COMPANY

Risk Management Services

NOEL ARNOLD & ASSOCIATES PTY LTD
A.C.N. 006 318 010 A.B.N. 75 006 318 010
Level 2, 11 Khartoum Road,
North Ryde, NSW 2113 Australia
Phone: (02) 9889 1800
Fax: (02) 9889 1811
Email: sydney@noel-arnold.com.au
www.noel-arnold.com.au

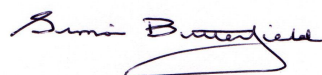
ASBESTOS FIBRE AIR MONITORING REPORT

Our Ref: C107605:J111804.070-20130430
Client: Hanson Construction Materials Pty Ltd
Attention: Martin Gear - Project Manager Aggregates
Job Location: East Guyong Quarry, Mitchell Highway, East Guyong NSW
Report Date: Tuesday 30 April 2013 Test Date: Tuesday 30 April 2013
Sampling Procedure: Control Sampled By: Pumps On: SB
Pumps Off: SB

Method: *Filters examined in accordance with Safe Work Australia's Guidance Note on the Membrane Filter Method for the Estimation of Airborne Asbestos Fibres, 2nd Edition, 2005 [NOHSC:3003: (2005)] – Refer NAA Internal Laboratory Test Method NALAB 301.*

Filter No.	Test Type Sample Location	Sample Period Start-Finish	Average Flow Rate (L/min)	Fibres/ Fields	Result(s) Fibres/mL
Control static monitoring during excavation of the shot rock at the northern end of the new access road on the East Guyong Quarry Site					
2270	Field Blank	-	-	0.0/100	-
345	Location 1 – Near Southern Boundary of Site, Access Road to Residence (No.3472) off Mitchell Highway, approx. 120 metres North of South Site Boundary – On barbed wire fence	0931 – 1526	1.40	1.0/100	< 0.01
945	Location 3 – Near Southern Boundary (SE Corner) of Site, Adjacent to New Access Road Entry (No.3410) off Mitchell Highway, approx. 30 metres from South Site Boundary – On barbed wire fence	0936 – 1530	1.40	0.0/100	< 0.01
2228	Location 4 – Near Eastern Boundary (near SE Corner) of Site, approx. 70 metres West of Shed, Access Road – On barbed wire fence	0939 - 1533	1.40	0.0/100	< 0.01
2232	Location 5 – Near Eastern Boundary (near Centre) of Site, approx. 50 metres West of East Site Boundary – On fencing post	0943 - 1536	1.40	0.0/100	< 0.01
1011	Location 6 – Western Boundary of Proposed Quarry Pit (near Western Site Boundary) – On barbed wire fence	0955 - 1550	1.40	0.0/100	< 0.01
2198	Location 8 – Western Boundary (near NW Corner) of Site – On barbed wire fence	1001 – 1558	1.40	0.0/100	< 0.01
3016	Location 10 – Near Northern Boundary of Site (near NE Corner Site) – On fencing post	0950 - 1543	1.40	0.0/100	< 0.01

Filter No.	Test Type Sample Location	Sample Period Start-Finish	Average Flow Rate (L/min)	Fibres/ Fields	Result(s) Fibres/mL
416	Location N1 – North of Work Area, (north of new access road cutting) – On fencing post	1015 - 1610	1.40	0.0/100	< 0.01
2104	Location N2 – West of Work Area, (west of new access road cutting) – On barbed wire fence	1009 - 1604	1.40	2.0/100	< 0.01
2140	Location N3 – South of Work Area, (south of new access road cutting) – On fencing post	1037 - 1619	1.40	1.0/100	< 0.01
505	Location N4 – East of Work Area, (east of new access road cutting) – On barbed wire fence	1021 – 1616	1.40	0.0/100	< 0.01
2003	Location N5 – Lunch Shed, Adjacent to New Access Road – On bench	1040 - 1622	1.40	2.0/100	< 0.01
Exposure monitoring during excavation works					
628	John Willis (EODO Pty Ltd) – Excavator Operator	1028 - 1613	1.40	2.0/100	< 0.01



APPROVED COUNTER & SIGNATORY:
SIMON BUTTERFIELD

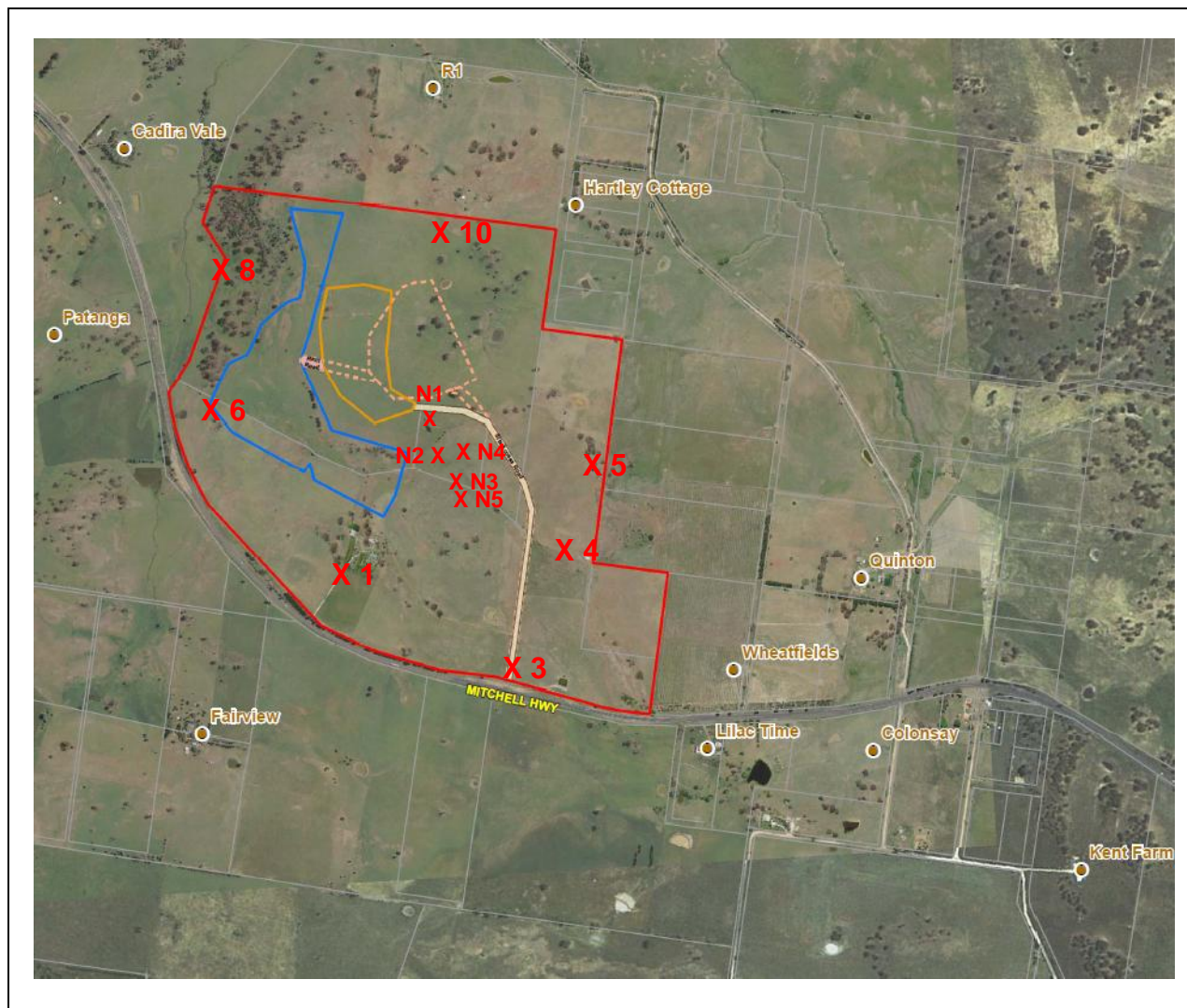


This document is issued in accordance with NATA's accreditation requirements.

Accredited for compliance with ISO/IEC 17025. Corporate Site No. 5450, Site No. 3402 Sydney Laboratory.

This document shall not be reproduced, except in full.

Figure 1 – Air Monitoring Location



**Air Monitoring Sampling Plan
East Guyong Quarry Site**

Monitoring Date: 30th April 2013

Legend

- X 1 Air monitoring locations
- Project Boundary
- Proposed Quarry Boundary
- Proposed Infrastructure Area Boundary

Air Monitoring Location Coordinates

Location 1:	709,104mE ; 6300,660mN	Location N1:	709,308mE ; 6301,159mN
Location 3:	709,601mE ; 6300,370mN	Location N2:	709,381mE ; 6301,014mN
Location 4:	709,729mE ; 6300,716mN	Location N3:	709,435mE ; 6300,963mN
Location 5:	709,870mE ; 6300,905mN	Location N4:	709,429mE ; 6301,108mN
Location 6:	708,803mE ; 6301,185mN	Location N5:	709,460mE ; 6300,911mN
Location 8:	708,824mE ; 6301,587mN		
Location 10:	709,465mE ; 6301,633mN		

Weather Conditions*

<i>General</i>	Fine – Partly Cloudy	<i>Wind Direction</i>	North-East to Westerly
<i>Rainfall</i>	0 mm	<i>Wind Speed</i>	6 – 13 km/h

* East Guyong Quarry Weather Station