



A GREENCAP
CONSULTING COMPANY

Risk Management Services

NOEL ARNOLD & ASSOCIATES PTY LTD
A.C.N. 006 318 010 A.B.N. 76 006 318 010
Level 2, 11 Khartoum Road,
North Ryde, NSW 2113 Australia
Phone: (02) 9889 1800
Fax: (02) 9889 1811
Email: sydney@noel-arnold.com.au
www.noel-arnold.com.au

ASBESTOS FIBRE AIR MONITORING REPORT

Our Ref: C107605:J111804 064-20130405

Client: Hanson Construction Materials Pty Ltd

Attention: Martin Gear - Project Manager Aggregates

Job Location: East Guyong Quarry, Mitchell Highway, East Guyong NSW

Report Date: Friday 12 April 2013

Test Date: Friday 5 April 2013

Sampling Procedure: Control

Sampled By: Pumps On: Pere Riini (Hanson)
Pumps Off: Pere Riini (Hanson)

Method: *Filters examined in accordance with Safe Work Australia's Guidance Note on the Membrane Filter Method for the Estimation of Airborne Asbestos Fibres, 2nd Edition, 2005 [NOHSC:3003: (2005)] – Refer NAA Internal Laboratory Test Method NALAB 301.*

Filter No.	Test Type Sample Location	Sample Period Start-Finish	Average Flow Rate (L/min)	Fibres/ Fields	Result(s) Fibres/mL
Control static monitoring during excavation of shot rock from the NW corner of Infrastructure Area on the East Guyong Quarry Site					
3089	Field Blank	-	-	0.0/100	-
3021	Location 1 – Near Southern Boundary of Site, Access Road to Residence (No.3472) off Mitchell Highway, approx. 120 metres North of South Site Boundary – On barbed wire fence	0715 – 1556	1.00	0.0/100	< 0.01
3050	Location 3 – Near Southern Boundary (SE Corner) of Site, Adjacent to New Access Road Entry (No.3410) off Mitchell Highway, approx. 30 metres from South Site Boundary – On barbed wire fence	0719 – 1559	1.00	0.0/100	< 0.01
3044	Location 4 – Near Eastern Boundary (near SE Corner) of Site, approx. 70 metres West of Shed, Access Road – On barbed wire fence	0730 – 1603	1.00	0.0/100	< 0.01
3020	Location 5 – Near Eastern Boundary (near Centre) of Site, approx. 50 metres West of East Site Boundary – On fencing post	0733 – 1607	1.00	0.0/100	< 0.01
3093	Location 6 – Western Boundary of Proposed Quarry Pit (near Western Site Boundary) – On barbed wire fence	0740 – 1610	1.00	0.0/100	< 0.01
3082	Location 8 – Western Boundary (near NW Corner) of Site – On barbed wire fence	0744 – 1614	1.00	0.0/100	< 0.01
3055	Location 10 – Near Northern Boundary of Site (near NE Corner Site) – On fencing post	0752 – 1623	1.00	0.0/100	< 0.01

Filter No.	Test Type Sample Location	Sample Period Start-Finish	Average Flow Rate (L/min)	Fibres/ Fields	Result(s) Fibres/mL
3073	Location N1 – North of Work Area, (north of construction shot), NW corner of Infrastructure Area – On fencing post	0757 – 1627	1.00	1.0/100	< 0.01
3043	Location N2 – West of Work Area, (west of construction shot), NW corner of Infrastructure Area – On barbed wire fence	0814 – 1639	1.00	0.0/100	< 0.01
3042	Location N3 – East of Work Area, (east of construction shot), NW corner of Infrastructure Area – On fencing post	0801 – 1630	1.00	1.0/100	< 0.01
3041	Location N4 – South of Work Area, (south of construction shot), NW corner of Infrastructure Area – On fencing post	0810 – 1641	1.00	0.0/100	< 0.01

Note: Pere Riini of Hanson Construction Materials Pty Ltd has been formally trained as a third party for volume measurement. Noel Arnold & Associates Pty Ltd assume responsibility for the data collected.



APPROVED COUNTER AND SIGNATORY :
SIMON BUTTERFIELD

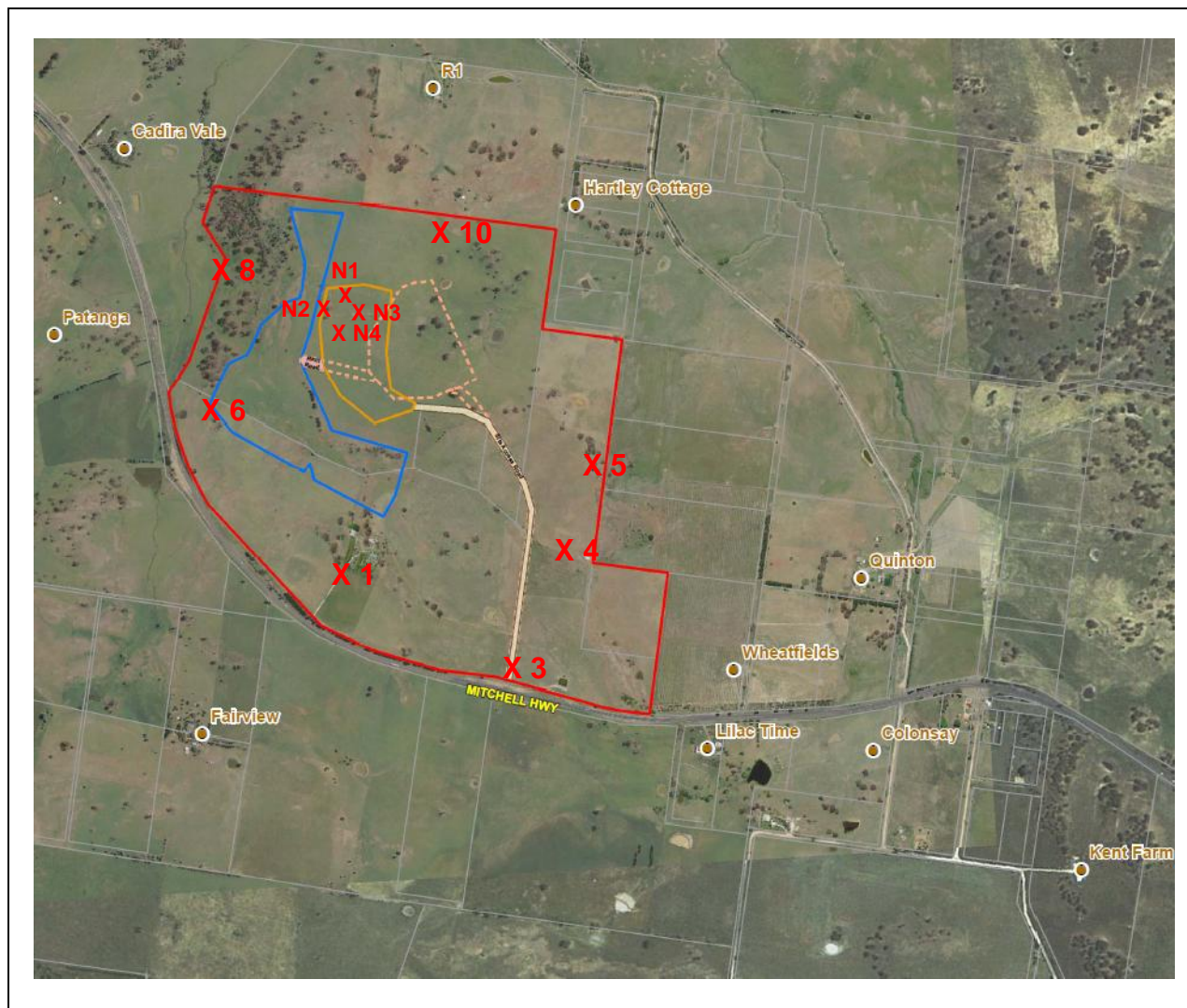


This document is issued in accordance with NATA's accreditation requirements.

Accredited for compliance with ISO/IEC 17025. Corporate Site No. 5450, Site No. 3402 Sydney Laboratory.

This document shall not be reproduced, except in full.

Figure 1 – Air Monitoring Location



**Air Monitoring Sampling Plan
East Guyong Quarry Site**

Monitoring Date: 5th April 2013

Legend

- X 1 Air monitoring locations
- Project Boundary
- Proposed Quarry Boundary
- Proposed Infrastructure Area Boundary

Air Monitoring Location Coordinates

Location 1:	709,104mE ; 6300,660mN	Location N1:	709,183mE ; 6301,483mN
Location 3:	709,601mE ; 6300,370mN	Location N2:	709,105mE ; 6301,449mN
Location 4:	709,729mE ; 6300,716mN	Location N3:	709,204mE ; 6301,383mN
Location 5:	709,870mE ; 6300,905mN	Location N4:	709,096mE ; 6301,282mN
Location 6:	708,803mE ; 6301,185mN		
Location 8:	708,824mE ; 6301,587mN		
Location 10:	709,465mE ; 6301,633mN		

Weather Conditions*

General	Overcast – Fine	Wind Direction	Mostly North-East
Rainfall	0 mm	Wind Speed	7 – 22 km/h

* East Guyong Quarry Weather Station