



A GREENCAP
CONSULTING COMPANY

Risk Management Services

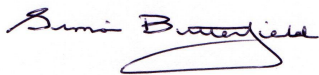
NOEL ARNOLD & ASSOCIATES PTY LTD
A.C.N. 006 318 010 ABN. 76 006 318 010
Level 2, 11 Khartoum Road,
North Ryde, NSW 2113 Australia
Phone: (02) 9889 1800
Fax: (02) 9889 1811
Email: sydney@noel-arnold.com.au
www.noel-arnold.com.au

ASBESTOS FIBRE AIR MONITORING REPORT

Our Ref: C107605:J111804 M014-20121213
Client: Hanson Construction Materials Pty Ltd
Attention: Martin Gear - Project Manager Aggregates
Job Location: East Guyong Quarry, Mitchell Highway Intersection Upgrade, East Guyong NSW
Report Date: Thursday 13 December 2012 Test Date: Thursday 13 December 2012
Sampling Procedure: Control Sampled By: Pumps On: SB
Pumps Off: SB

Method: *Filters examined in accordance with Safe Work Australia's Guidance Note on the Membrane Filter Method for the Estimation of Airborne Asbestos Fibres, 2nd Edition, 2005 [NOHSC:3003: (2005)] – Refer NAA Internal Laboratory Test Method NALAB 301.*

Filter No.	Test Type Sample Location	Sample Period Start-Finish	Average Flow Rate (L/min)	Fibres/ Fields	Result(s) Fibres/mL
Control static monitoring during works associated with the drainage in the eastern section of the northern side of the Mitchell Highway Intersection Upgrade					
2166	Field Blank	-	-	0.0/100	-
1356	Location M1 - Northern Side of Mitchell Highway, North of Work Area (east of entry gate) – On fence	0714 – 1254	1.20	1.0/100	< 0.01
335	Location M2 - Northern Side of Mitchell Highway, West of Work Area – On fence	0716 – 1256	1.20	2.0/100	< 0.01
2023	Location M3 - Northern Side of Mitchell Highway, East of Work Area – On fence post	0718 – 1300	1.20	1.0/100	< 0.01
2258	Location M4 - Northern Side of Mitchell Highway, South of Work Area – On fence	0720 – 1304	1.20	1.0/100	< 0.01
2211	Location M5 - Lunch Shed – On bench	0724 – 1308	1.20	0.0/100	< 0.01
417	Bree Fardon (EODO Pty Ltd) – Excavator Operator	0731 – 1207	2.00	2.0/100	< 0.01
2197	Simon Butterfield (NAA) – Surveillance & Spotter	0727 – 1052	3.00	3.0/100	< 0.01
2206	Simon Butterfield (NAA) – Surveillance & Spotter	1052 – 1311	3.00	5.0/100	< 0.01



APPROVED COUNTER AND SIGNATORY :
SIMON BUTTERFIELD

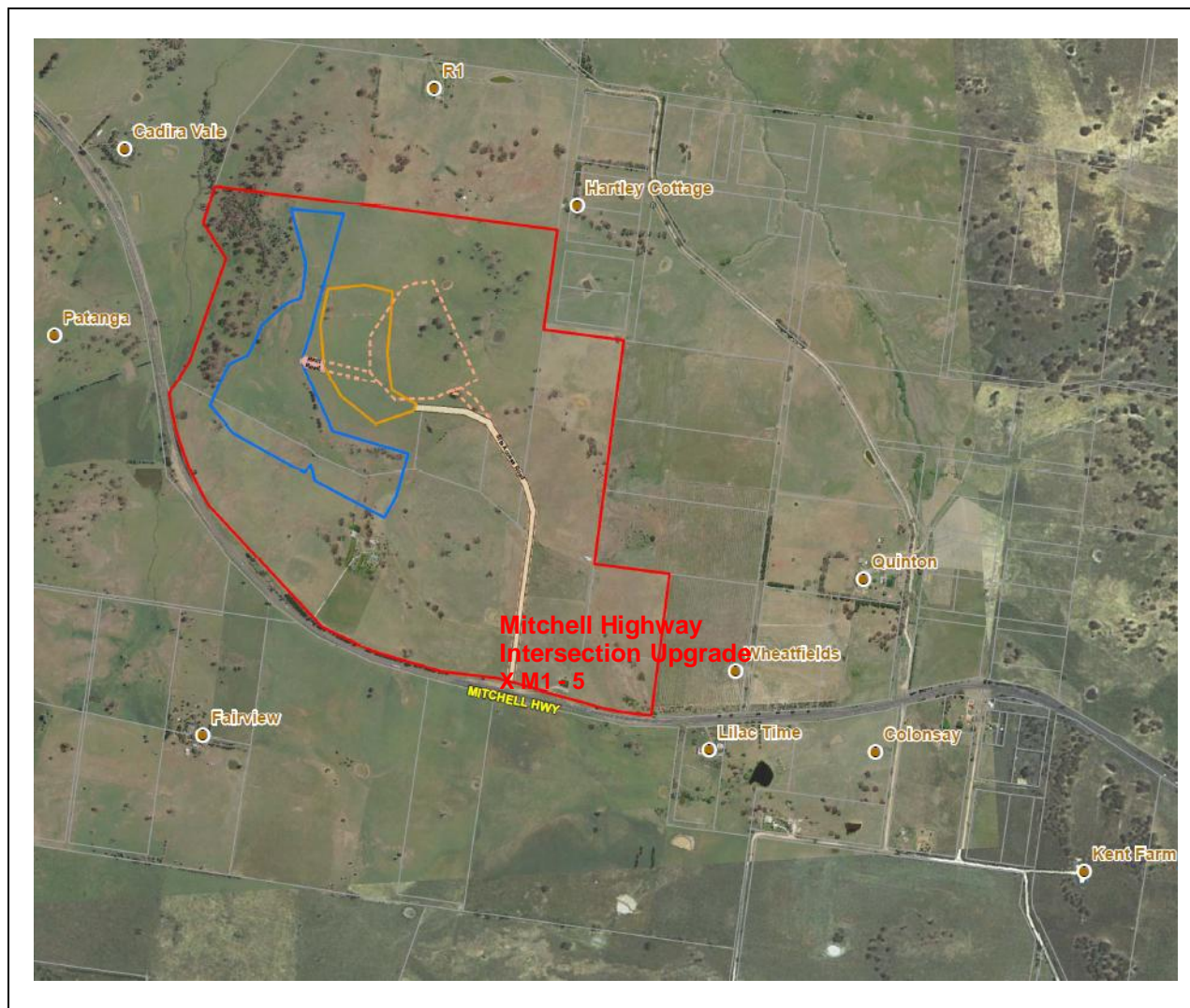


This document is issued in accordance with NATA's accreditation requirements.

Accredited for compliance with ISO/IEC 17025.
Corporate Site No. 5450, Site No. 3402 Sydney Laboratory.

This document shall not be reproduced, except in full.

Figure 1 – Air Monitoring Locations



Air Monitoring Sampling Plan
 East Guyong Quarry
 Mitchell Highway Intersection
 Upgrade Site

Legend

- X 1 Air monitoring locations
- Project Boundary
- Proposed Quarry Boundary
- Proposed Infrastructure Area Boundary

Monitoring Date: 13th December 2012

Air Monitoring Location Coordinates			
Location M1:	709,602mE ; 6300,344mN	Location M2:	709,527mE ; 6300,354mN
Location M3:	709,610mE ; 6300,312mN	Location M4:	709,534mE ; 6300,309mN
Location M5:	709,532mE ; 6300,460mN		
Weather Conditions*			
General	Fine	Wind Direction	Mostly North East
Rainfall	0.0 mm	Wind Speed	3 – 16 km/h

* East Guyong Quarry Weather Station