



A GREENCAP  
CONSULTING COMPANY

# Risk Management Services

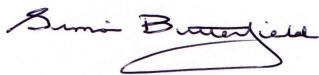
NOEL ARNOLD & ASSOCIATES PTY LTD  
A.C.N. 006 318 010 A.B.N. 76 006 318 010  
Level 2, 11 Khartoum Road,  
North Ryde, NSW 2113 Australia  
Phone: (02) 9889 1800  
Fax: (02) 9889 1811  
Email: sydney@noel-arnold.com.au  
www.noel-arnold.com.au

## ASBESTOS FIBRE AIR MONITORING REPORT

Our Ref: C107605:J111804 M013-20121212  
Client: Hanson Construction Materials Pty Ltd  
Attention: Martin Gear - Project Manager Aggregates  
Job Location: East Guyong Quarry, Mitchell Highway Intersection Upgrade, East Guyong NSW  
Report Date: Wednesday 12 December 2012 Test Date: Wednesday 12 December 2012  
Sampling Procedure: Control Sampled By: Pumps On: SB  
Pumps Off: SB

Method: *Filters examined in accordance with Safe Work Australia's Guidance Note on the Membrane Filter Method for the Estimation of Airborne Asbestos Fibres, 2<sup>nd</sup> Edition, 2005 [NOHSC:3003: (2005)] – Refer NAA Internal Laboratory Test Method NALAB 301.*

Filter No.	Test Type Sample Location	Sample Period Start-Finish	Average Flow Rate (L/min)	Fibres/ Fields	Result(s) Fibres/mL
Control static monitoring during works associated with the drainage near the centre-western section of the northern side of the Mitchell Highway Intersection Upgrade and localised excavation for geotechnical sampling on the southern side of the Mitchell Highway Intersection Upgrade					
841	Field Blank	-	-	0.0/100	-
2128A	Location M1 - Southern Side of Mitchell Highway, Approx. 150 metres West of Access Road Intersection – On road guide post	0840 – 1608	1.20	1.0/100	< 0.01
625	Location M2 - Southern Side of Mitchell Highway, Approx. 40 metres West of Access Road Intersection – On fence	0846 – 1611	1.20	1.0/100	< 0.01
1243	Location M3 - Southern Side of Mitchell Highway, Approx. 120 metres East of Access Road Intersection – On road guide post	0853 – 1615	1.20	0.0/100	< 0.01
909	Location M4 - Northern Side of Mitchell Highway, East of Work Area – On fence post	1028 – 1620	1.20	2.0/100	< 0.01
1090	Location M5 - Northern Side of Mitchell Highway, North of Work Area – On fence	1023 – 1623	1.20	1.0/100	< 0.01
804	Location M6 - Northern Side of Mitchell Highway, West of Work Area – On barrier	1021 – 1604	1.20	1.0/100	< 0.01
504	Location M7 - Lunch Shed – On bench	0807 – 1631	1.20	1.5/100	< 0.01
2205	Dean Whiting (EODO Pty Ltd) - Spotter	1025 – 1321	3.00	7.5/100	< 0.01
939A	Simon Butterfield (NAA) – Surveillance & Assisted Geotechnical Personnel	0857 – 1322	2.00	3.5/100	< 0.01



APPROVED COUNTER AND SIGNATORY :  
SIMON BUTTERFIELD

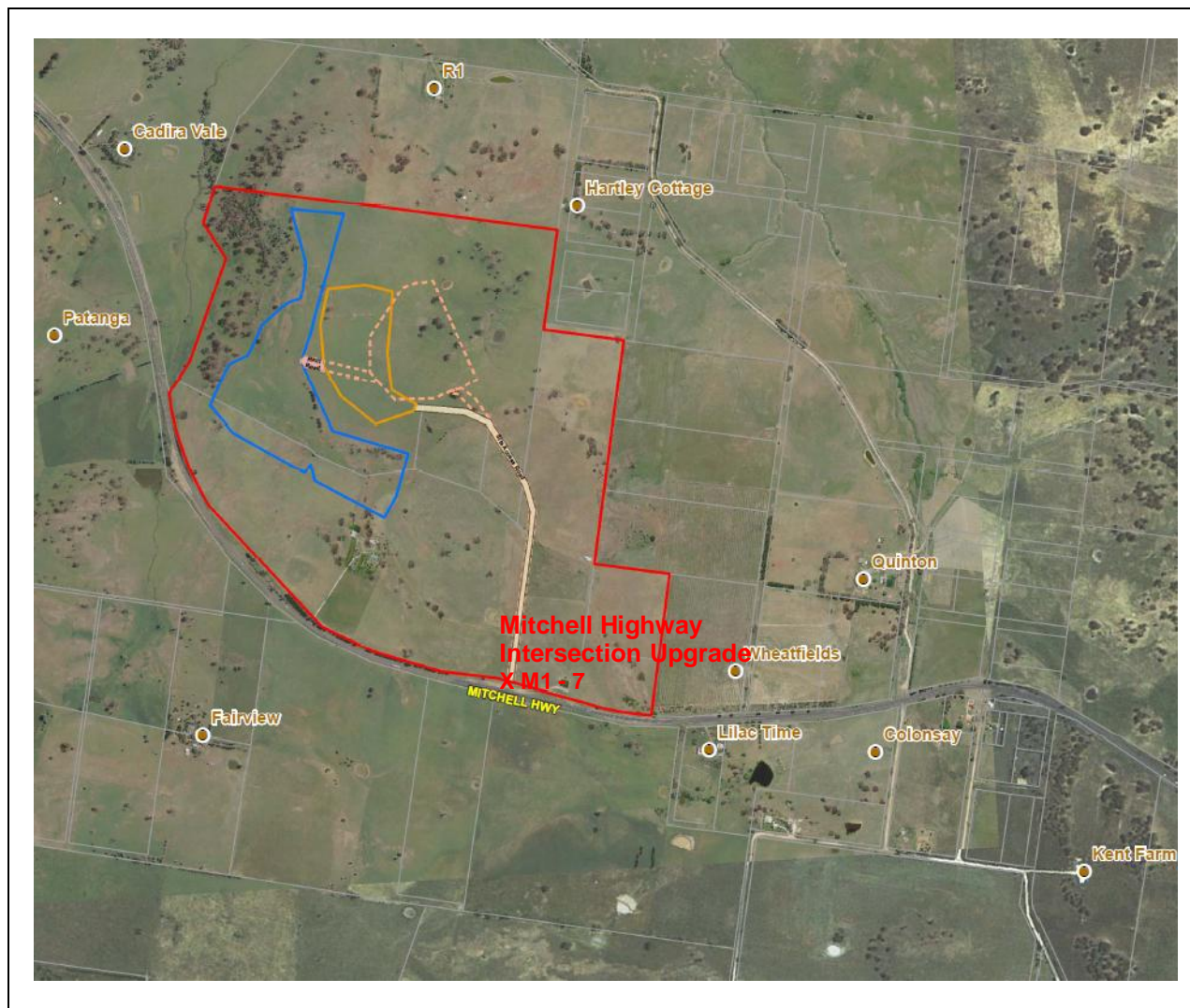


This document is issued in accordance with NATA's accreditation requirements.

Accredited for compliance with ISO/IEC 17025.  
Corporate Site No. 5450, Site No. 3402 Sydney Laboratory.

This document shall not be reproduced, except in full.

Figure 1 – Air Monitoring Locations



Air Monitoring Sampling Plan  
 East Guyong Quarry  
 Mitchell Highway Intersection  
 Upgrade Site

Monitoring Date: 12<sup>th</sup> December 2012

Legend

- X 1 Air monitoring locations
- Project Boundary
- Proposed Quarry Boundary
- Proposed Infrastructure Area Boundary

Air Monitoring Location Coordinates			
Location M1:	709,424mE ; 6300,344mN	Location M2:	709,534mE ; 6300,309mN
Location M3:	709,696mE ; 6300,274mN	Location M4:	709,590mE ; 6300,325mN
Location M5:	709,560mE ; 6300,343mN	Location M6:	709,475mE ; 6300,351mN
Location M6:	709,532mE ; 6300,460mN		
Weather Conditions*			
General	Fine to Overcast	Wind Direction	North East - East
Rainfall	0.0 mm	Wind Speed	13 – 22 km/h

\* East Guyong Quarry Weather Station