



A GREENCAP
CONSULTING COMPANY

Risk Management Services

NOEL ARNOLD & ASSOCIATES PTY LTD
A.C.N. 006 318 010 ABN. 76 006 318 010
Level 2, 11 Khartoum Road,
North Ryde, NSW 2113 Australia
Phone: (02) 9889 1800
Fax: (02) 9889 1811
Email: sydney@noel-arnold.com.au
www.noel-arnold.com.au

ASBESTOS FIBRE AIR MONITORING REPORT

Our Ref: C107605:J111804 M012-20121211
Client: Hanson Construction Materials Pty Ltd
Attention: Martin Gear - Project Manager Aggregates
Job Location: East Guyong Quarry, Mitchell Highway Intersection Upgrade, East Guyong NSW
Report Date: Tuesday 11 December 2012 Test Date: Tuesday 11 December 2012
Sampling Procedure: Control Sampled By: Pumps On: SB
Pumps Off: SB

Method: *Filters examined in accordance with Safe Work Australia's Guidance Note on the Membrane Filter Method for the Estimation of Airborne Asbestos Fibres, 2nd Edition, 2005 [NOHSC:3003: (2005)] – Refer NAA Internal Laboratory Test Method NALAB 301.*

Filter No.	Test Type Sample Location	Sample Period Start-Finish	Average Flow Rate (L/min)	Fibres/ Fields	Result(s) Fibres/mL
Control static monitoring during works associated with the drainage in the western and centre sections of the northern side of the Mitchell Highway Intersection Upgrade					
2258	Field Blank	-	-	0.0/100	-
841	Location M1 - Northern Side of Mitchell Highway, North West of Work Area – On fence	0754 – 1625	1.20	1.5/100	< 0.01
2023	Location M2 - Northern Side of Mitchell Highway, West of Work Area – On barrier	0752 – 1635	1.20	1.5/100	< 0.01
2206	Location M3 - Northern Side of Mitchell Highway, East of Work Area – On fence post	0750 – 1630	1.20	1.0/100	< 0.01
939A	Location M4 - Southern Side of Mitchell Highway, South of Work Area – On fence	0758 – 1643	1.20	0.0/100	< 0.01
335	Location M5 - Northern Side of Mitchell Highway, North of Work Area (Change Area) – On fence	0754 – 1625	1.20	1.0/100	< 0.01
909	Location M6 - Lunch Shed – On bench	0804 – 1623	1.20	0.0/100	< 0.01
2211	Spotter – Dean Whiting (EODO Pty Ltd)	0802 – 1627	1.20	6.0/100	< 0.01
2197	Plant Operator – Marty Rookyard (EODO Pty Ltd)	0808 – 1150	2.00	2.0/100	< 0.01
1356	Plant Operator – Marty Rookyard (EODO Pty Ltd)	1150 – 1659	2.00	2.5/100	< 0.01



APPROVED COUNTER AND SIGNATORY :
SIMON BUTTERFIELD

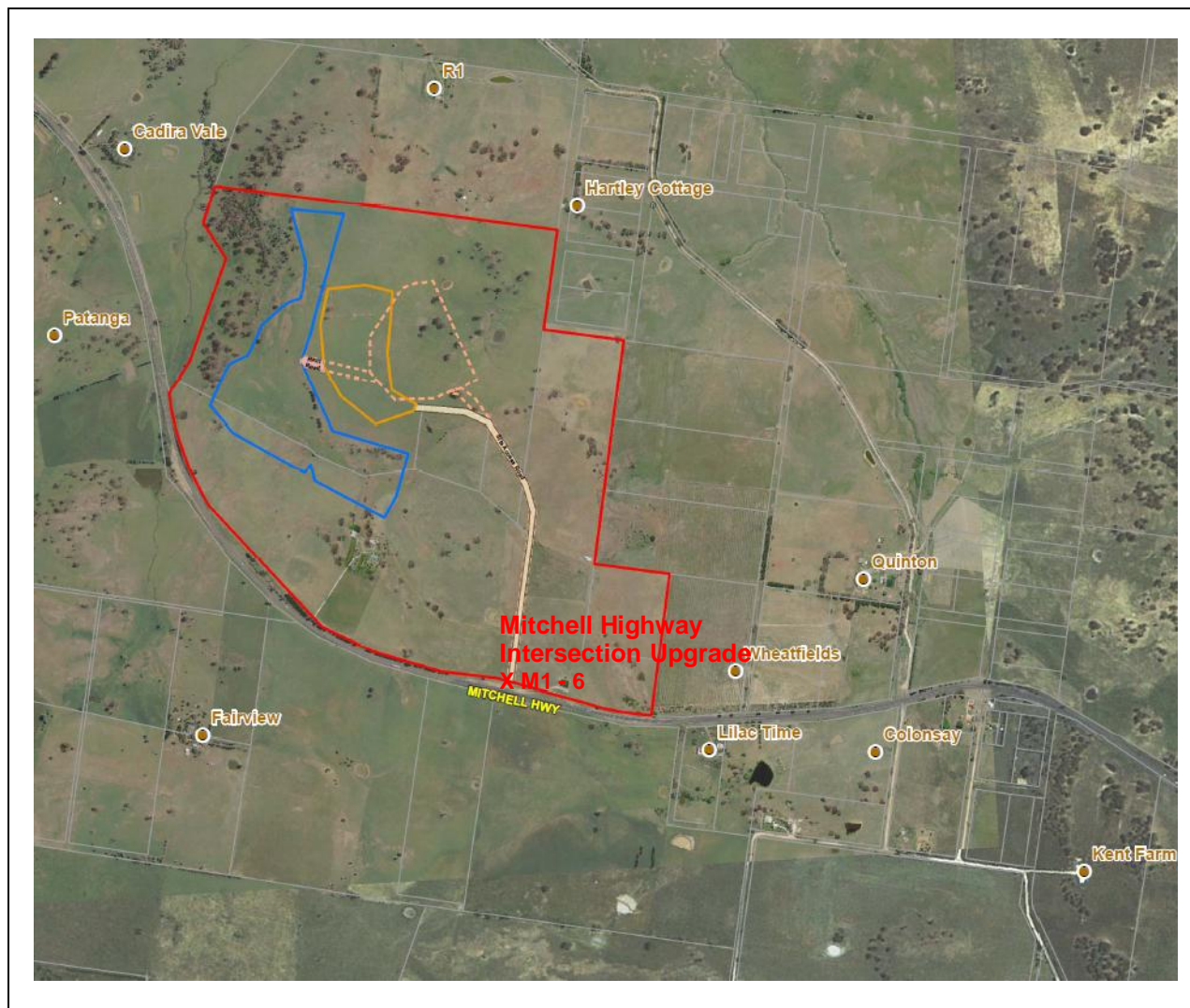


This document is issued in accordance with NATA's accreditation requirements.

Accredited for compliance with ISO/IEC 17025.
Corporate Site No. 5450, Site No. 3402 Sydney Laboratory.

This document shall not be reproduced, except in full.

Figure 1 – Air Monitoring Locations



Air Monitoring Sampling Plan
 East Guyong Quarry
 Mitchell Highway Intersection
 Upgrade Site

Legend

- X 1 Air monitoring locations
- Project Boundary
- Proposed Quarry Boundary
- Proposed Infrastructure Area Boundary

Monitoring Date: 11th December 2012

Air Monitoring Location Coordinates			
Location M1:	709,560mE ; 6300,347mN	Location M2:	709,475mE ; 6300,351mN
Location M3:	709,590mE ; 6300,325mN	Location M4:	709,534mE ; 6300,310mN
Location M5:	709,577mE ; 6300,332mN	Location M6:	709,532mE ; 6300,460mN
Weather Conditions*			
General	Mostly cloudy to fine	Wind Direction	East
Rainfall	0.0 mm	Wind Speed	13 – 27 km/h

* East Guyong Quarry Weather Station