



A GREENCAP
CONSULTING COMPANY

Risk Management Services

NOEL ARNOLD & ASSOCIATES PTY LTD
A.C.N. 006 318 010 A.B.N. 75 006 318 010
Level 2, 11 Khartoum Road,
North Ryde, NSW 2113 Australia
Phone: (02) 9889 1800
Fax: (02) 9889 1811
Email: sydney@noel-arnold.com.au
www.noel-arnold.com.au

ASBESTOS FIBRE AIR MONITORING REPORT

Our Ref: C107605:J111804 M011-20121210
Client: Hanson Construction Materials Pty Ltd
Attention: Martin Gear - Project Manager Aggregates
Job Location: East Guyong Quarry, Mitchell Highway Intersection Upgrade, East Guyong NSW
Report Date: Monday 10 December 2012 Test Date: Monday 10 December 2012
Sampling Procedure: Control Sampled By: Pumps On: SB
Pumps Off: SB

Method: *Filters examined in accordance with Safe Work Australia's Guidance Note on the Membrane Filter Method for the Estimation of Airborne Asbestos Fibres, 2nd Edition, 2005 [NOHSC:3003: (2005)] – Refer NAA Internal Laboratory Test Method NALAB 301.*

Filter No.	Test Type Sample Location	Sample Period Start-Finish	Average Flow Rate (L/min)	Fibres/ Fields	Result(s) Fibres/mL
Control static monitoring during works associated with the subsoil drainage pipe in the western section of the northern side of the Mitchell Highway Intersection Upgrade					
1090	Field Blank	-	-	0.0/100	-
1243	Location M1 - Northern Side of Mitchell Highway, North of Work Area – On fence	0841 – 1558	1.20	2.0/100	< 0.01
625	Location M2 - Northern Side of Mitchell Highway, West of Work Area – On barrier	0843 – 1556	1.20	1.0/100	< 0.01
504	Location M3 - Northern Side of Mitchell Highway, East of Work Area – On fence post	0849 – 1553	1.20	2.0/100	< 0.01
804	Location M4 - Southern Side of Mitchell Highway, South of Work Area – On fence	0846 – 1614	1.20	1.0/100	< 0.01
2128A	Location M5 - Lunch Shed – On bench	0854 – 1608	1.20	1.0/100	< 0.01
2079	Plant Operator – Marty Rookyard (EODO Pty Ltd)	0905 – 1607	1.20	2.5/100	< 0.01
2205	Plant Operator – John Willis (EODO Pty Ltd)	1027 – 1602	1.50	6.5/100	< 0.01

APPROVED COUNTER AND SIGNATORY :
SIMON BUTTERFIELD

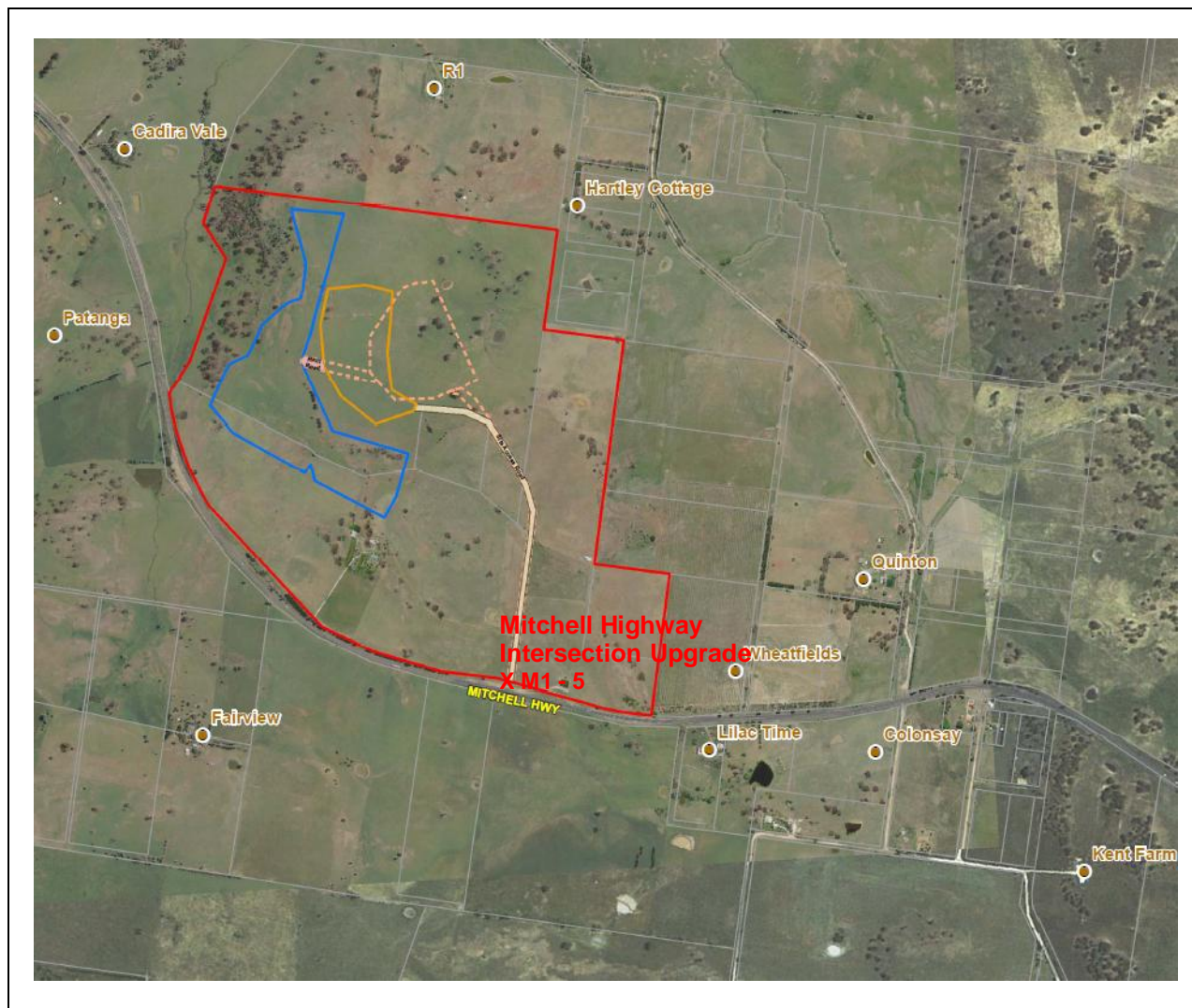


This document is issued in accordance with NATA's accreditation requirements.

Accredited for compliance with ISO/IEC 17025. Corporate Site No. 5450, Site No. 3402 Sydney Laboratory.

This document shall not be reproduced, except in full.

Figure 1 – Air Monitoring Locations



Air Monitoring Sampling Plan
 East Guyong Quarry
 Mitchell Highway Intersection
 Upgrade Site

Legend

- X 1 Air monitoring locations
- Project Boundary
- Proposed Quarry Boundary
- Proposed Infrastructure Area Boundary

Monitoring Date: 10th December 2012

Air Monitoring Location Coordinates			
Location M1:	709,560mE ; 6300,347mN	Location M2:	709,475mE ; 6300,351mN
Location M3:	709,590mE ; 6300,325mN	Location M4:	709,534mE ; 6300,310mN
Location M5:	709,532mE ; 6300,460mN		
Weather Conditions*			
General	Mostly fine (partly cloudy)	Wind Direction	East
Rainfall	0.0 mm	Wind Speed	18 – 28 km/h

* East Guyong Quarry Weather Station