

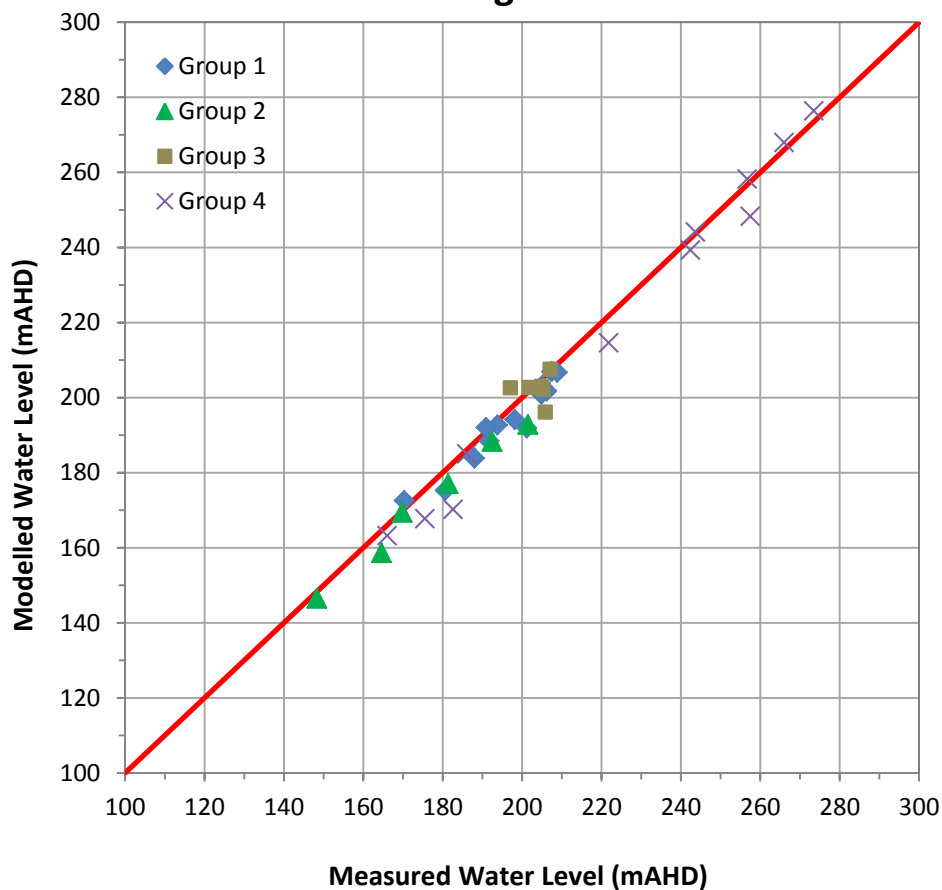
# ATTACHMENT AB

**Calibration  
Statistics;  
Simulated and  
Observed  
Hydrographs**

## Steady State Calibration Summary

CALIBRATION PARAMETERS		VALUE	
Number of Observations		36	
Residual Mean		2.98	m
Abs. Res. Mean		3.92	m
Min. Residual		-5.46	m
Max. Residual		12.42	m
Range in Observations		125.16	m
Scaled Mean Sum of Residuals	SMSR	2.38	%
Root Mean Square	RMS	4.97	m
Scaled RMS	SRMS	3.97	%
Root Mean Fraction Square	RMFS	2.52	%
Scaled RMFS	SRMFS	4.08	%
Coefficient of Determination	CD	0.92	

## Scattergram



## Transient Calibration Summary

Start Date: 1 January 2007

End Date: 31 December 2012

Total Number of Stress Period in the Model: 72 (monthly basis)

Total Number of Monitoring Bores located inside Model Doman and in the Active Area: 36 bores

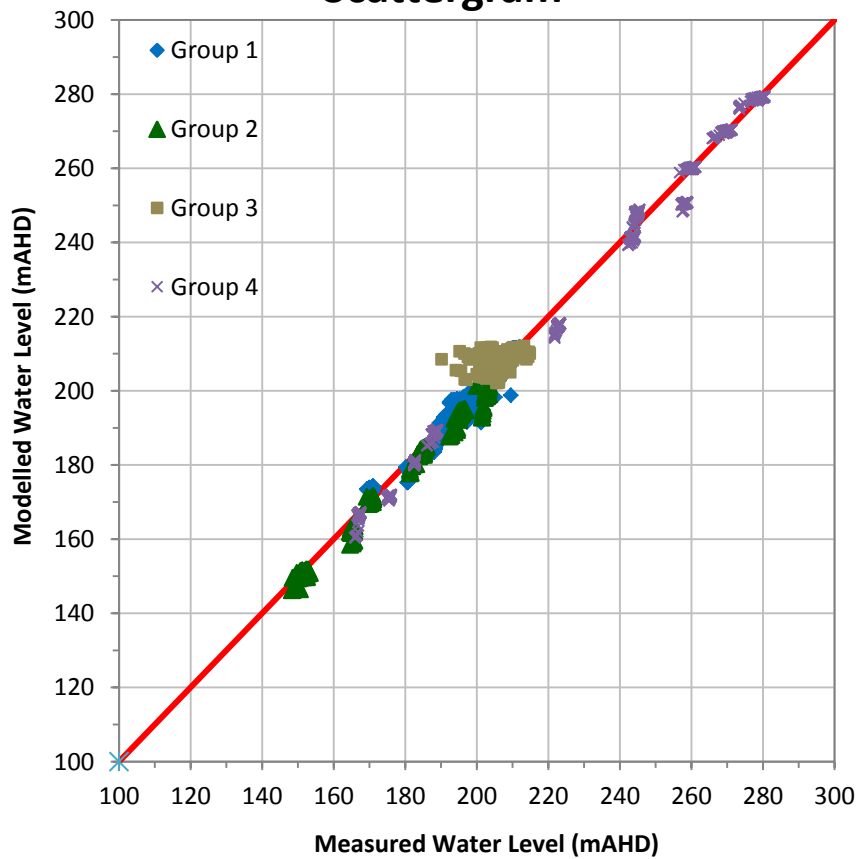
Total Number of Head Targets used to calibrate the Transient Model: 2333 points

### Transient Calibration Head Targets

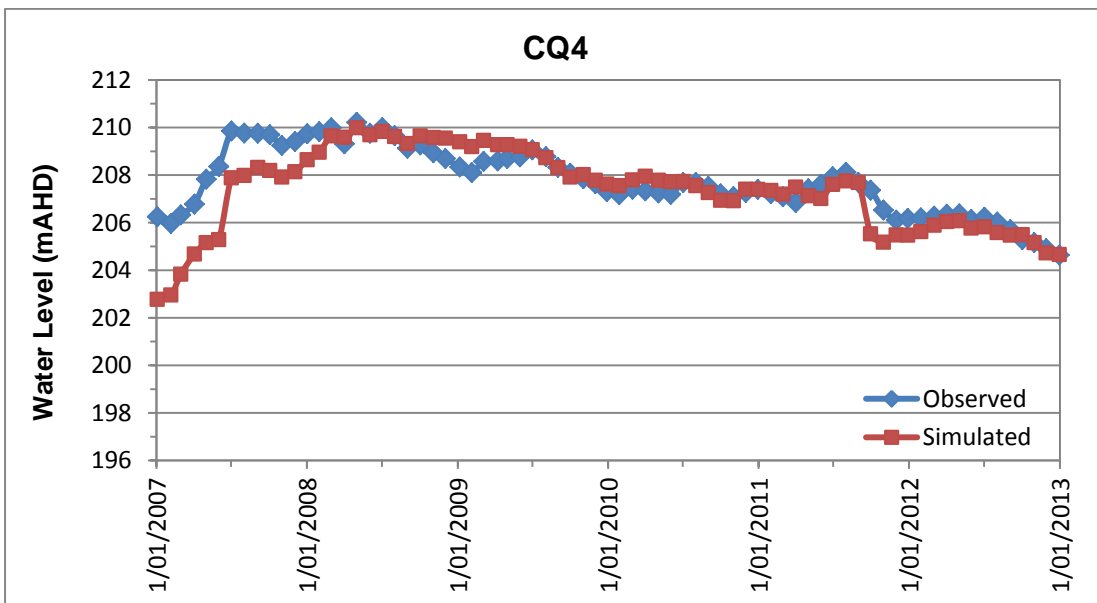
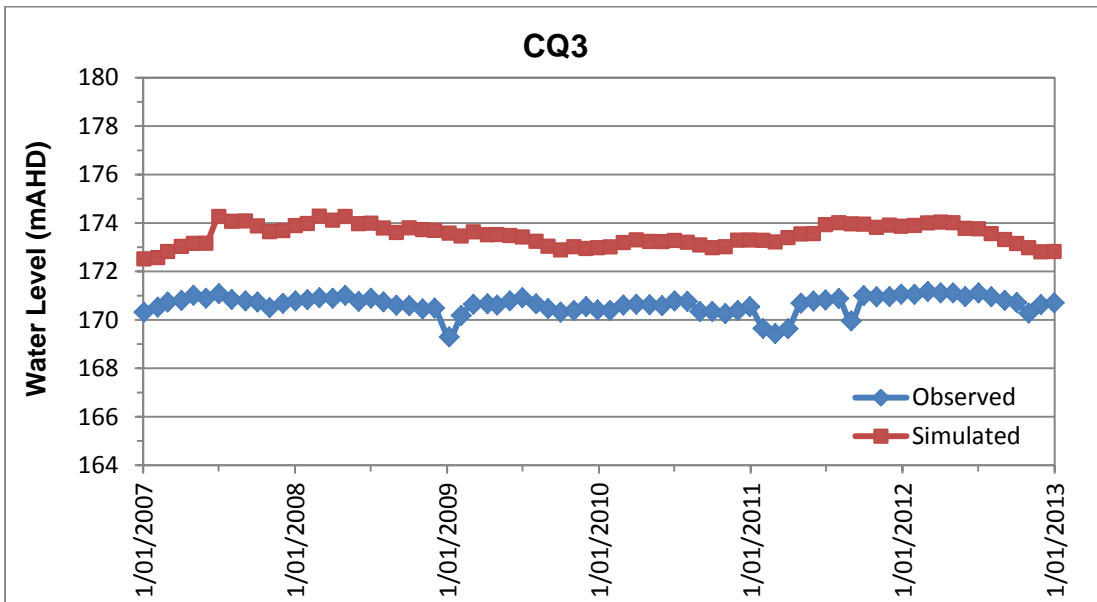
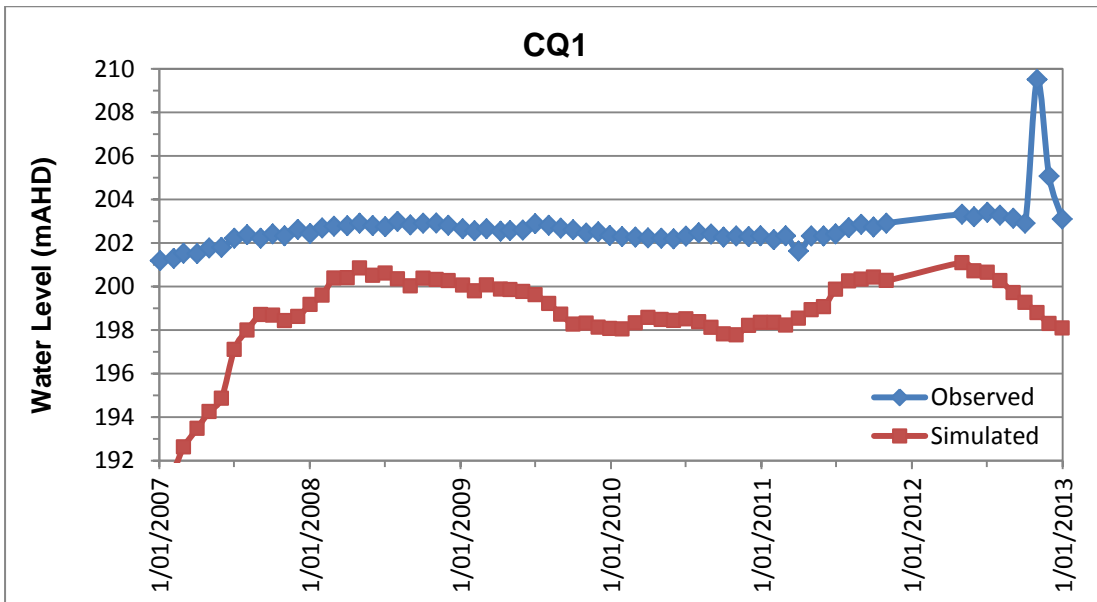
Site	No. of Monitoring Bores	No. of Transient Points	Group
CQ Bores	13	942	1
MW Bores	6	369	2
CP Bores	6	420	3
GW Bores	11	602	4
<b>Total</b>	<b>36</b>	<b>2333</b>	

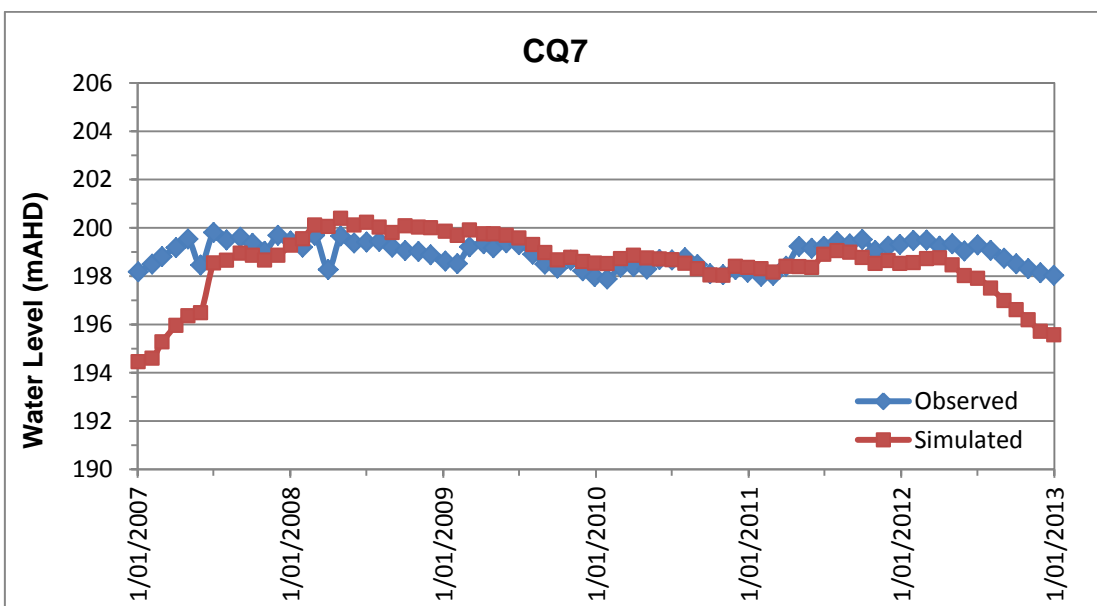
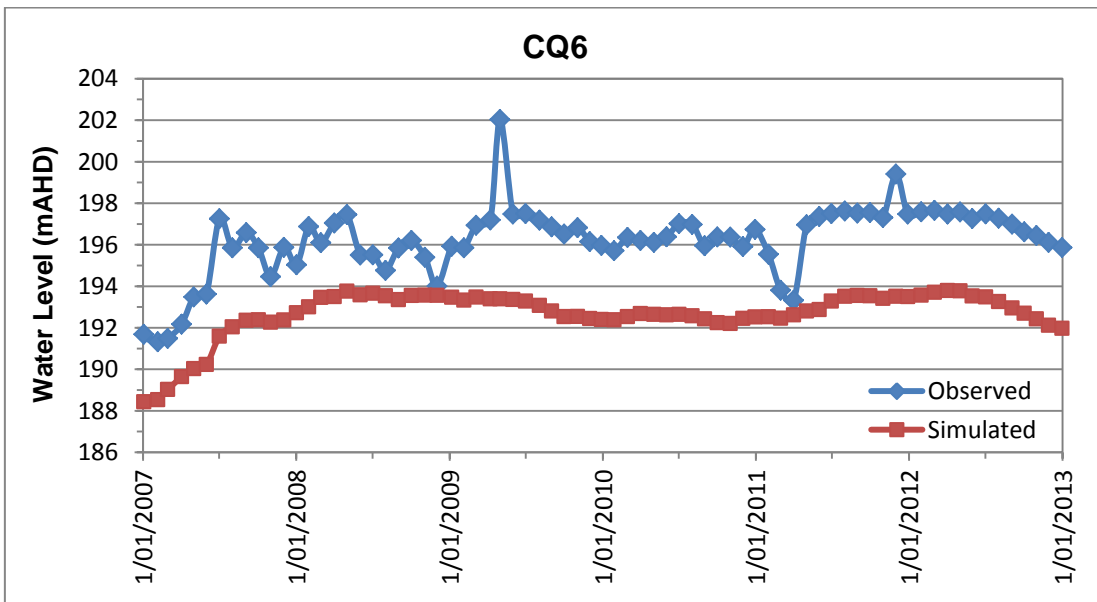
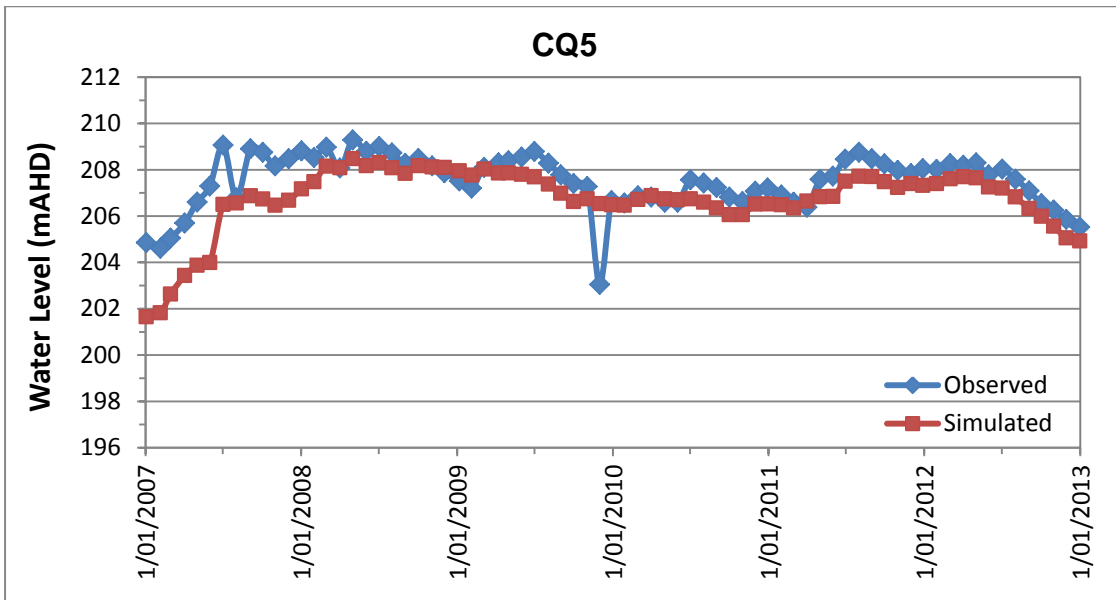
CALIBRATION PARAMETERS		VALUE	
Number of Observations		2333	
Residual Mean		0.50	m
Abs. Res. Mean		2.12	m
Min. Residual		-18.37	m
Max. Residual		10.71	m
Range in Observations		132.26	m
Scaled Mean Sum of Residuals	SMSR	0.38	%
<b>Root Mean Square</b>	<b>RMS</b>	<b>2.86</b>	<b>m</b>
<b>Scaled RMS</b>	<b>SRMS</b>	<b>2.16</b>	<b>%</b>
Root Mean Fraction Square	RMFS	1.41	%
Scaled RMFS	SRMFS	2.17	%
Coefficient of Determination	CD	1.00	

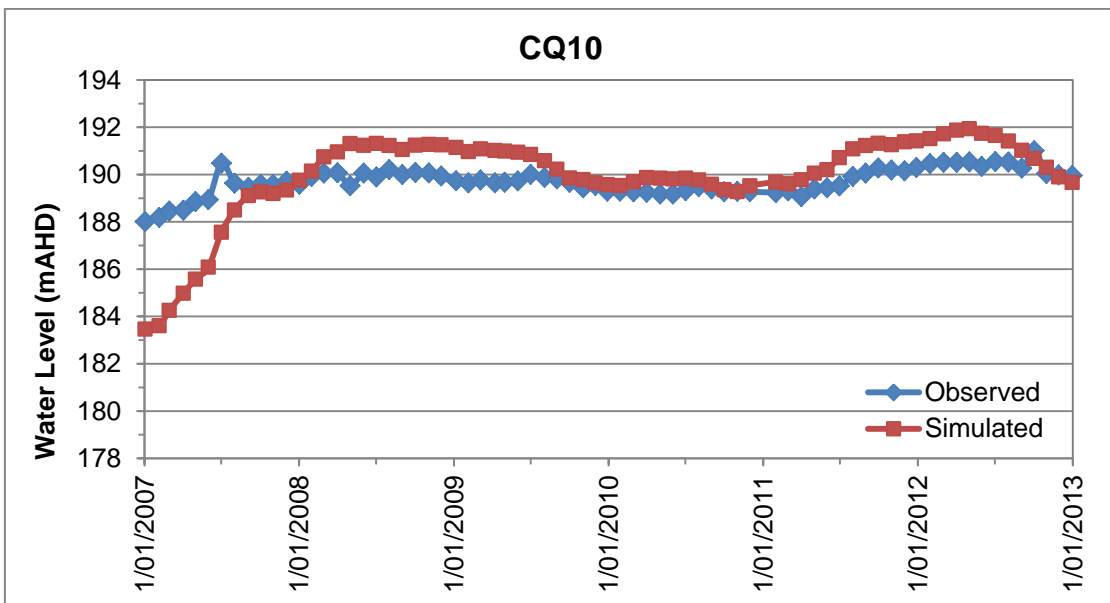
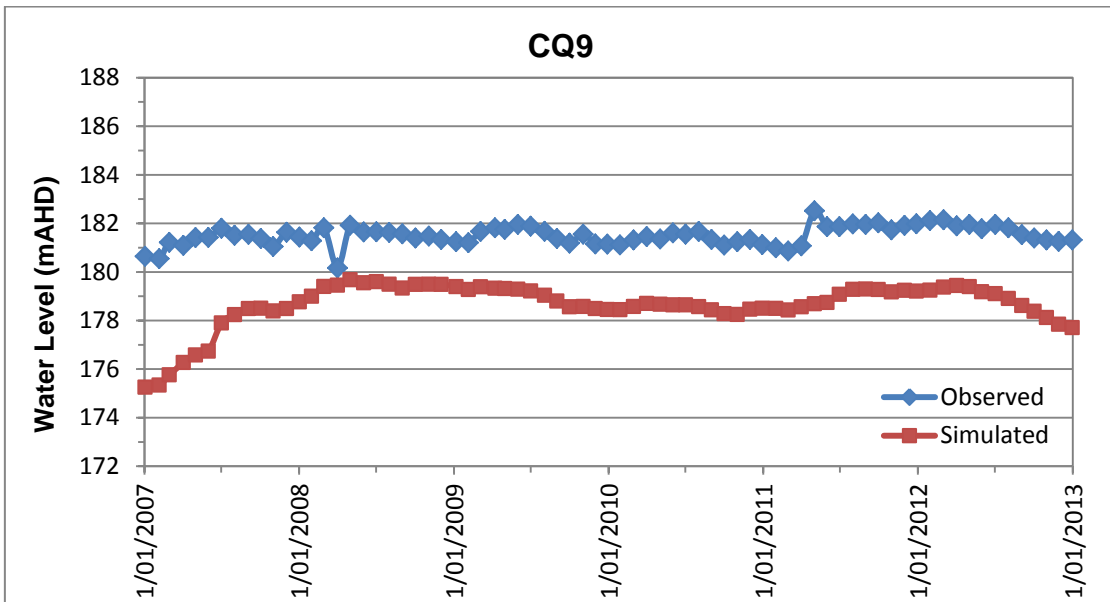
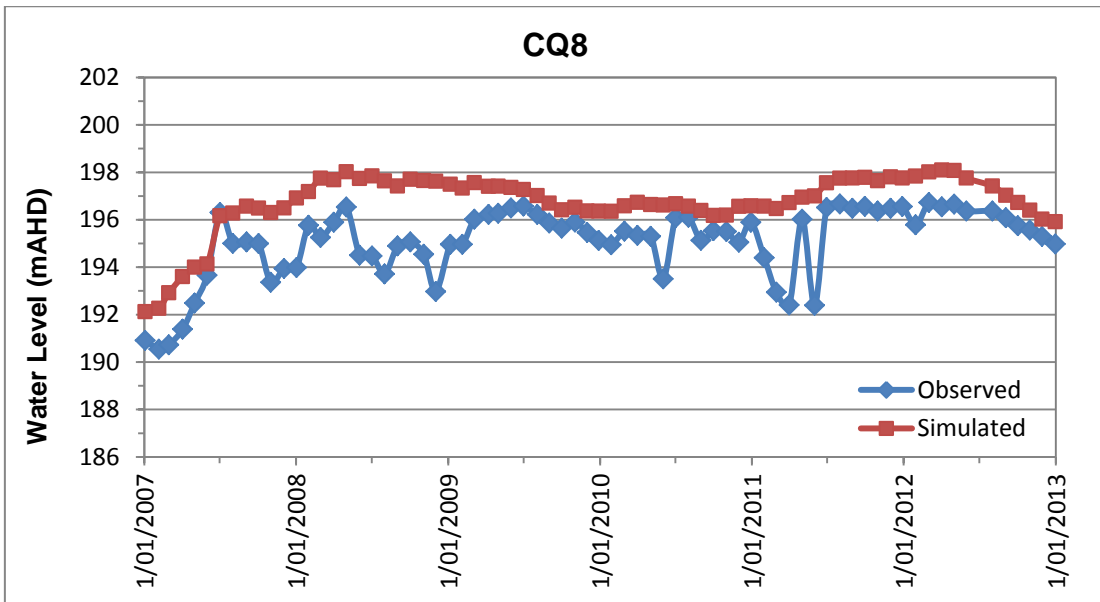
### Scattergram



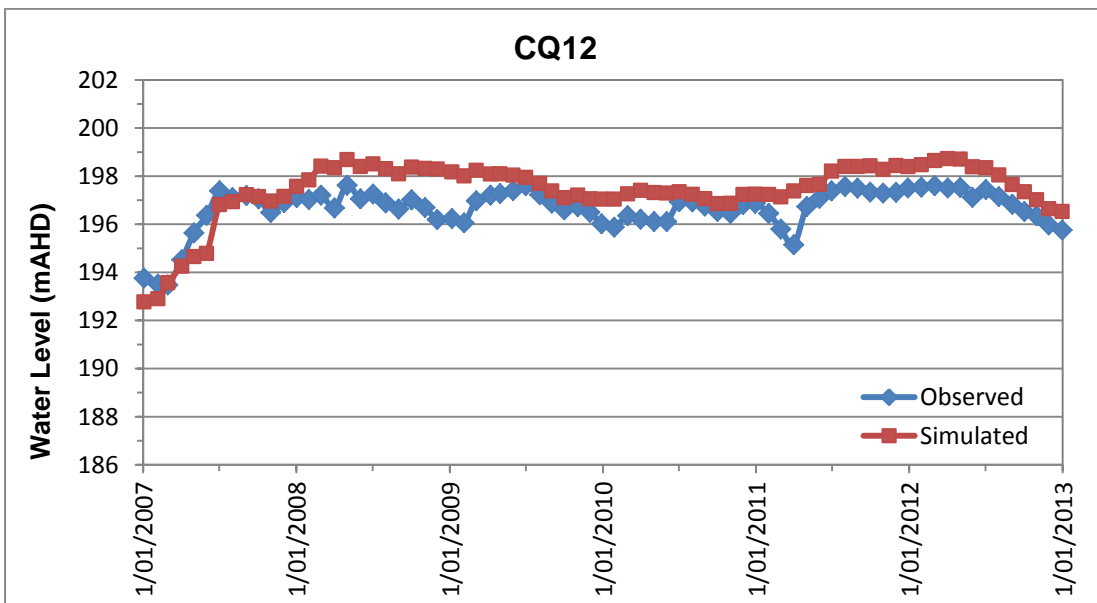
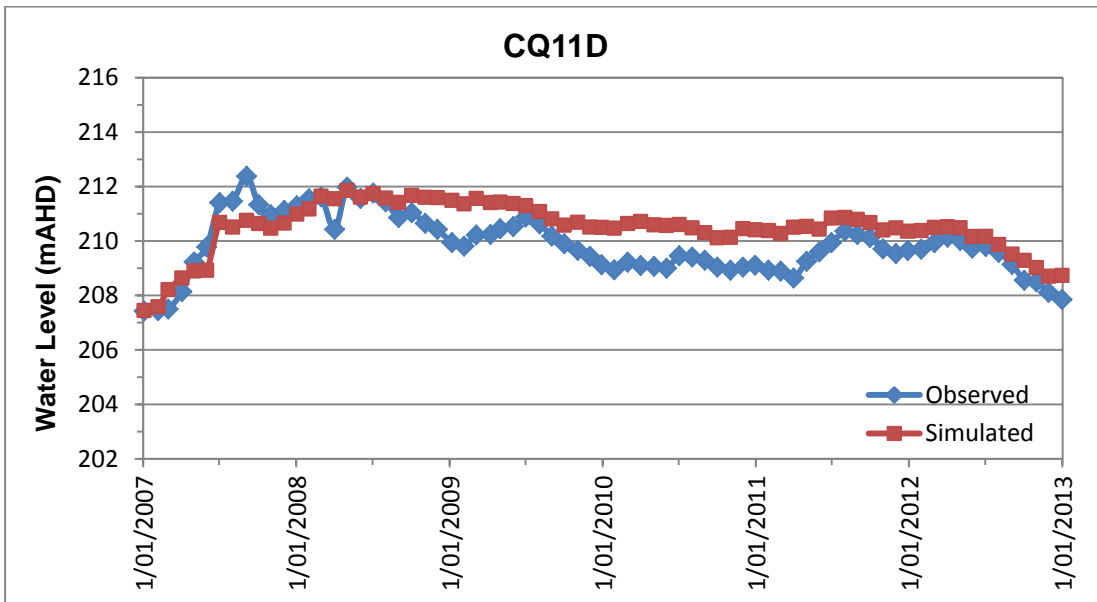
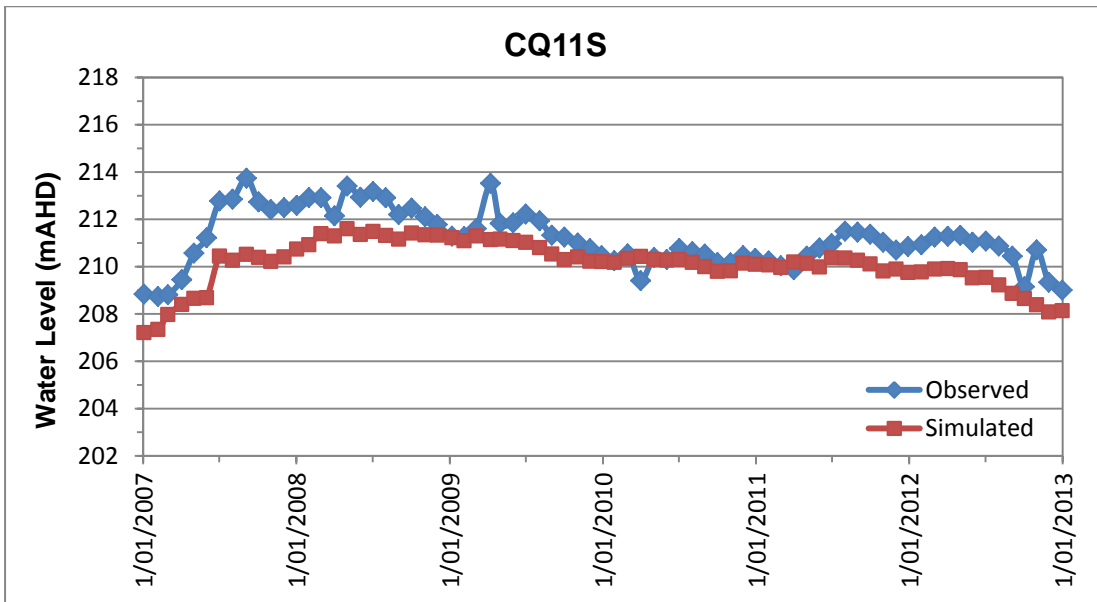
Group 1: CQ Bores

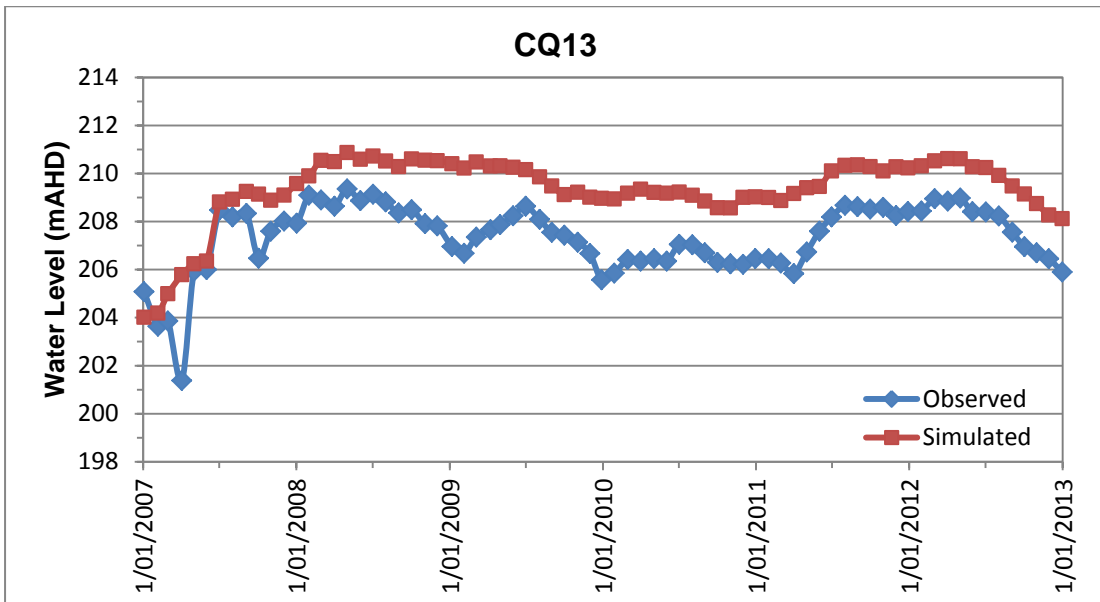




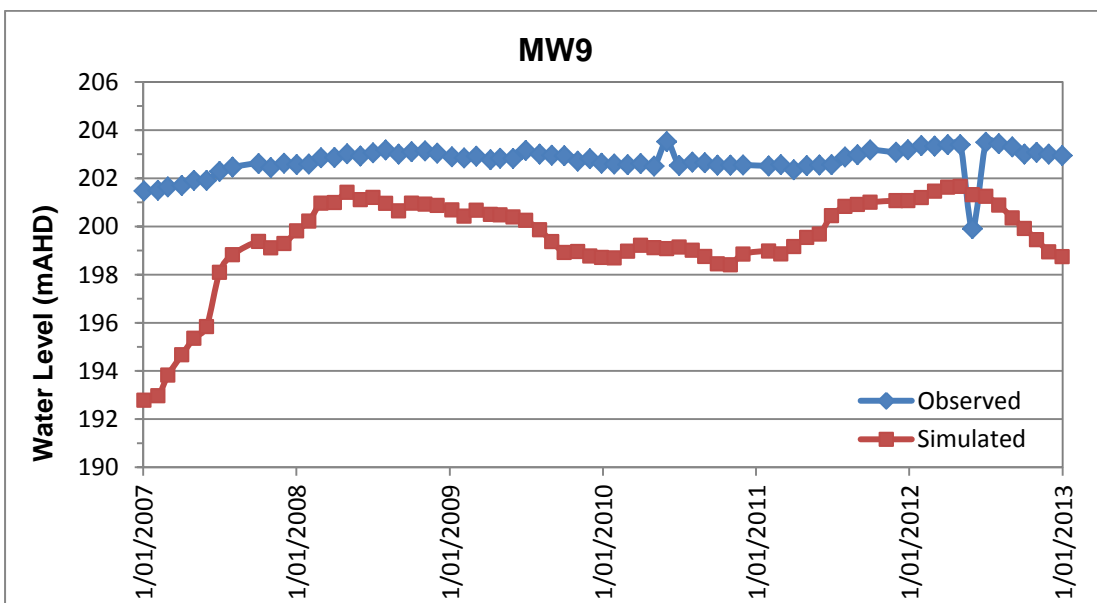
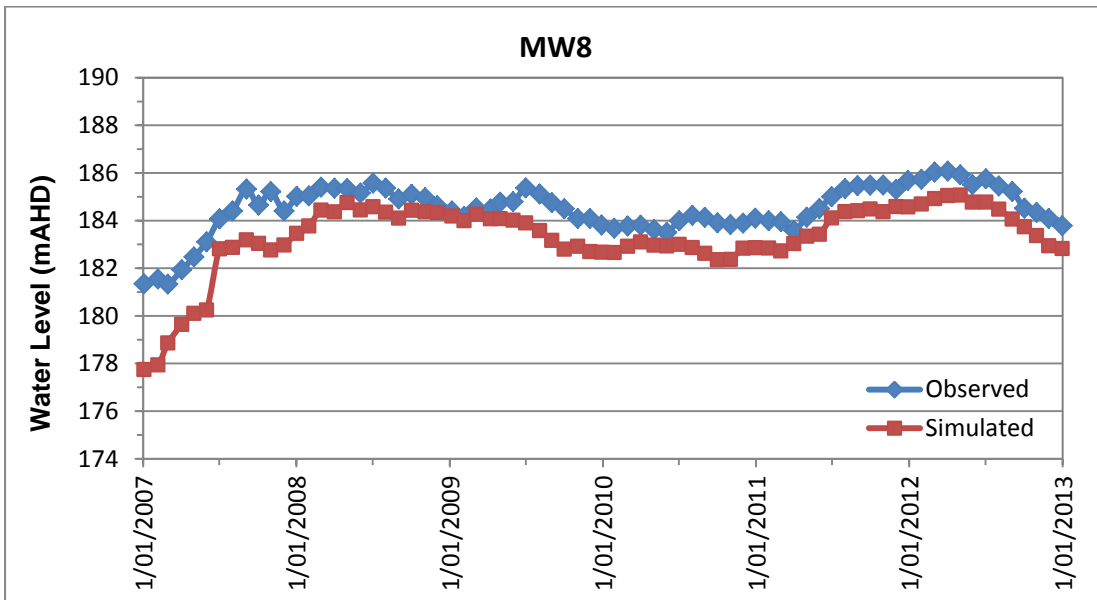
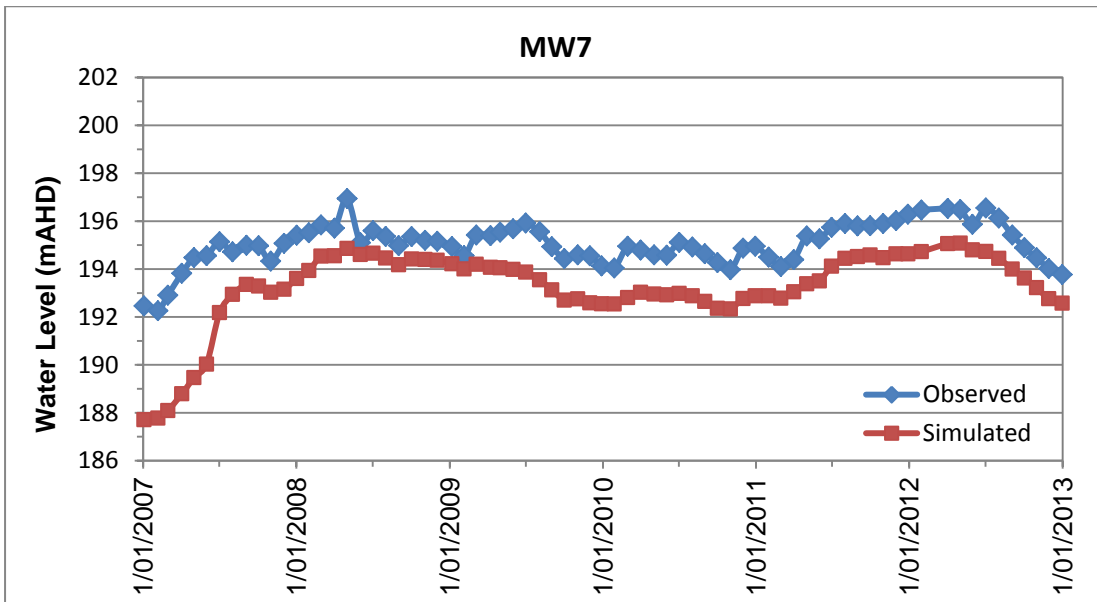


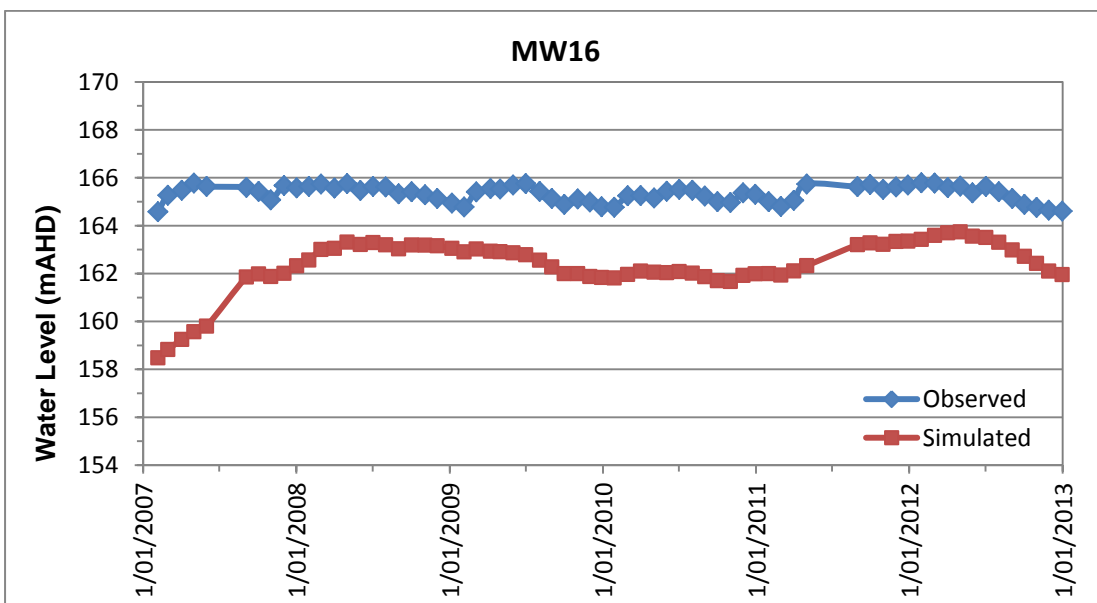
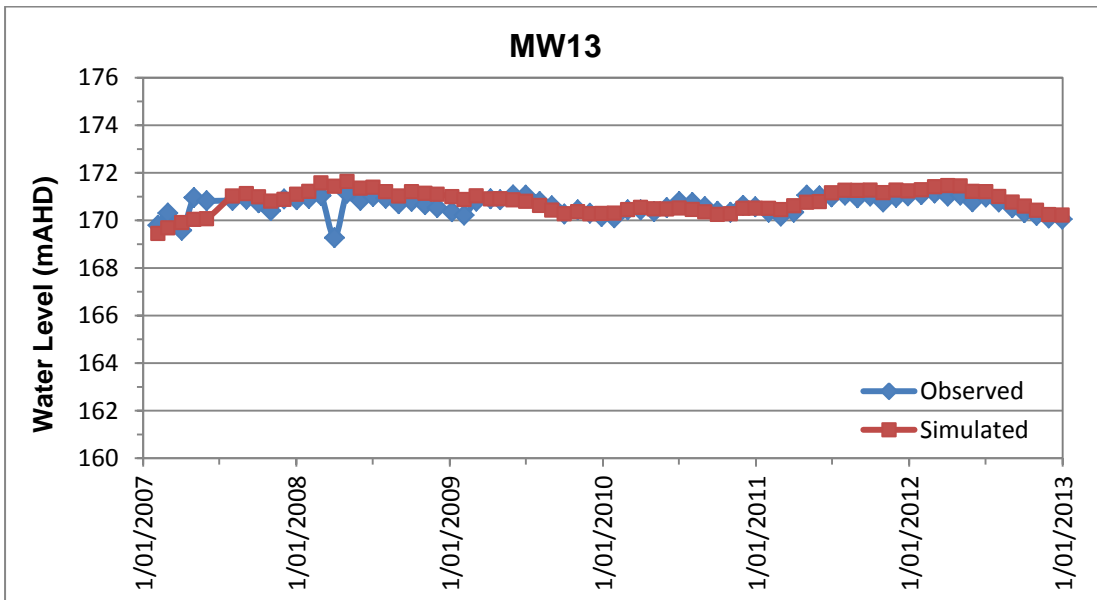
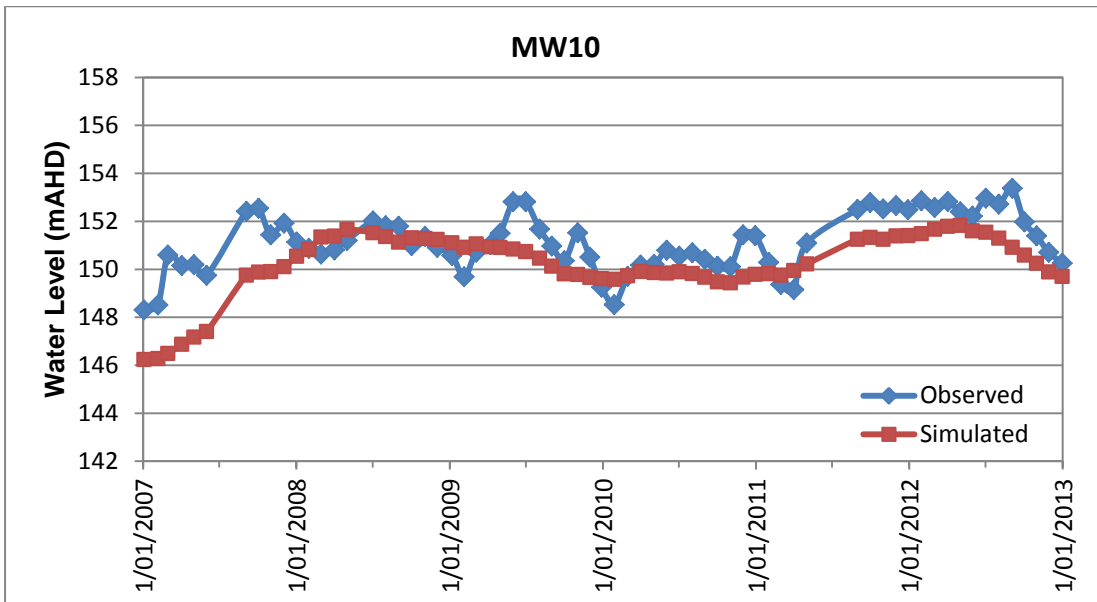




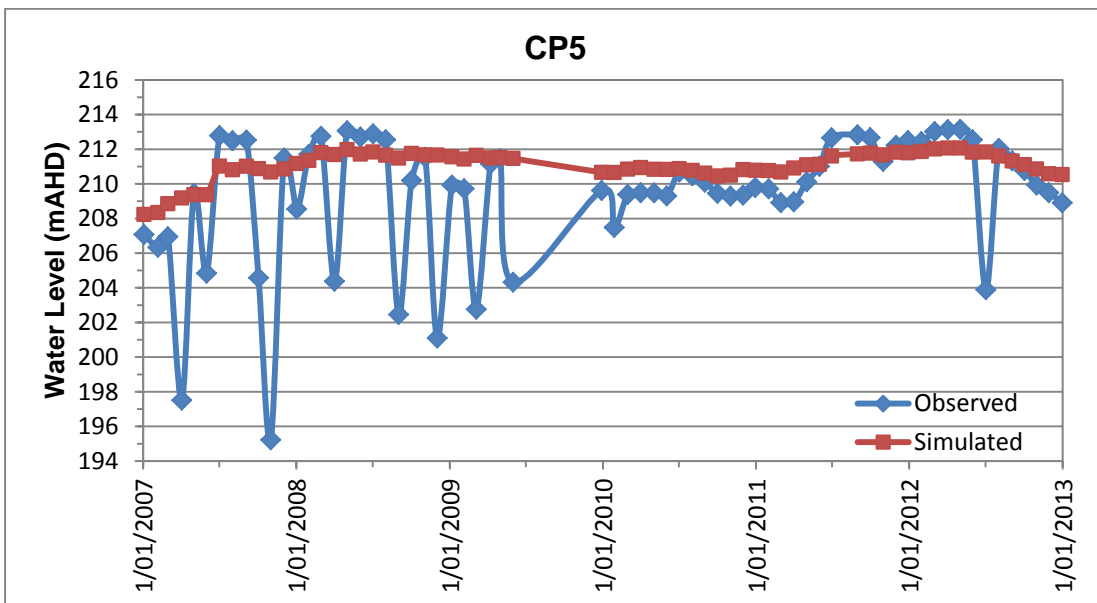
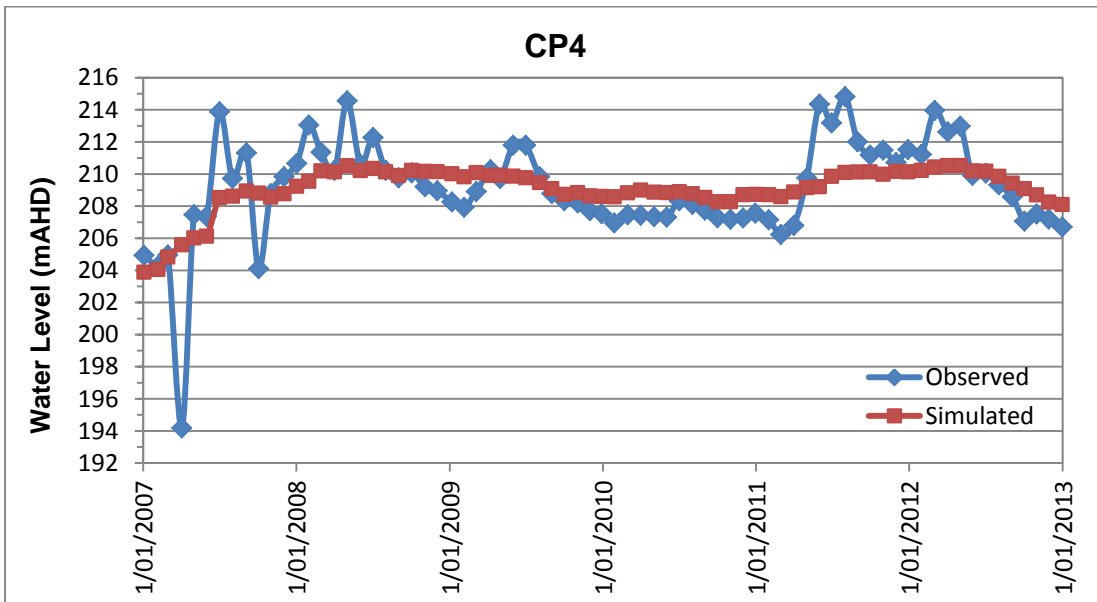
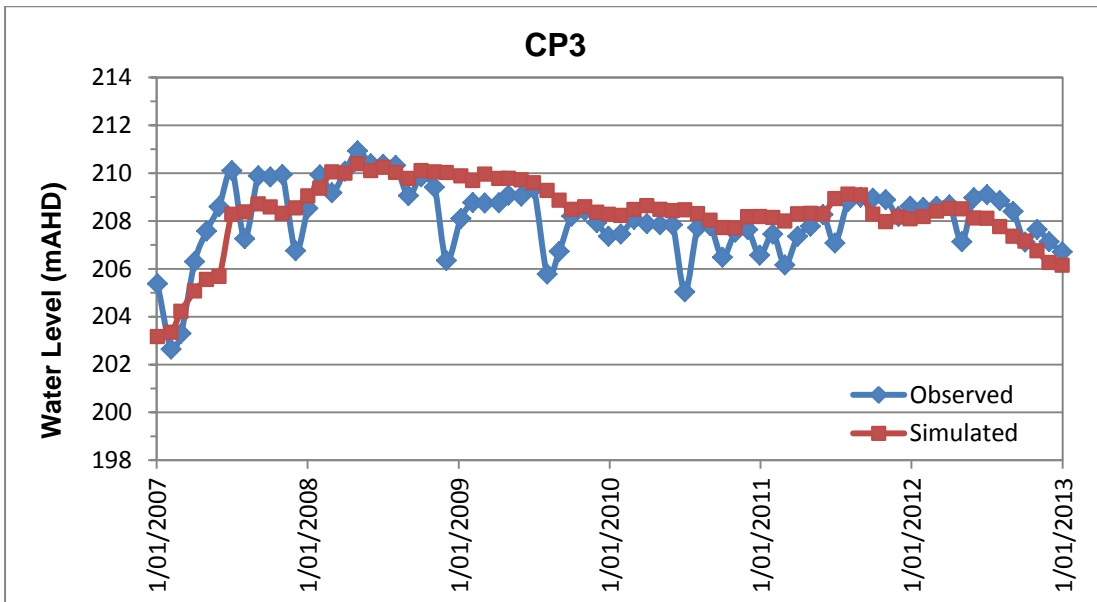


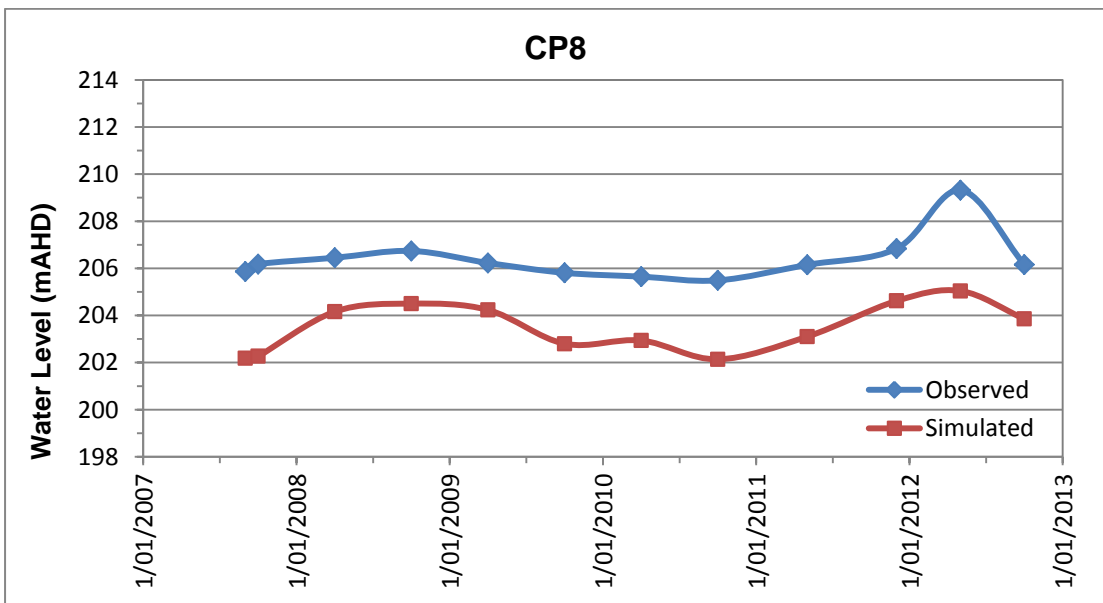
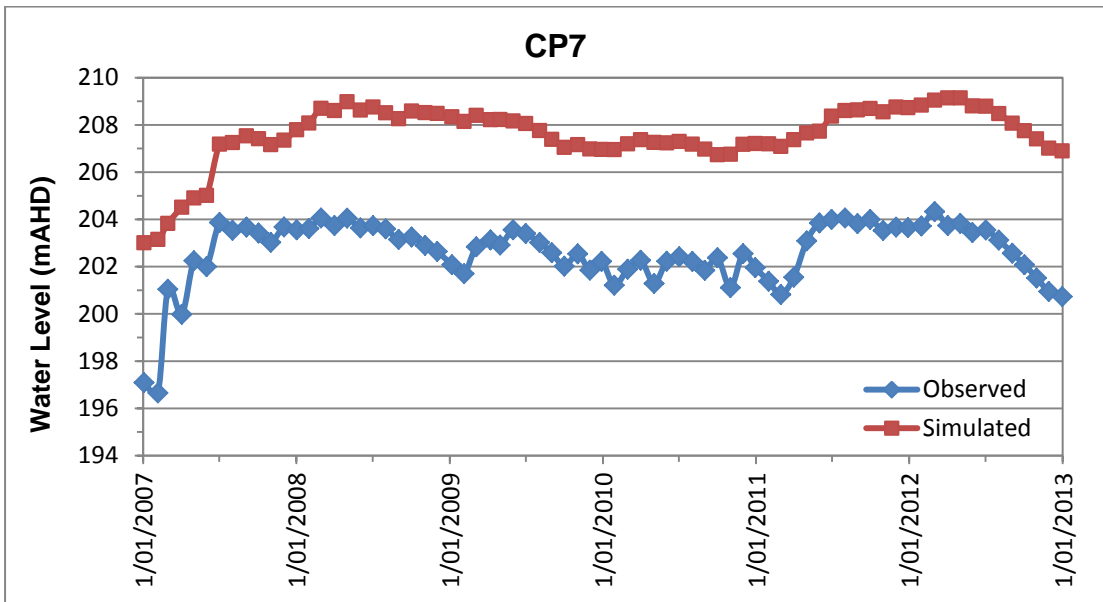
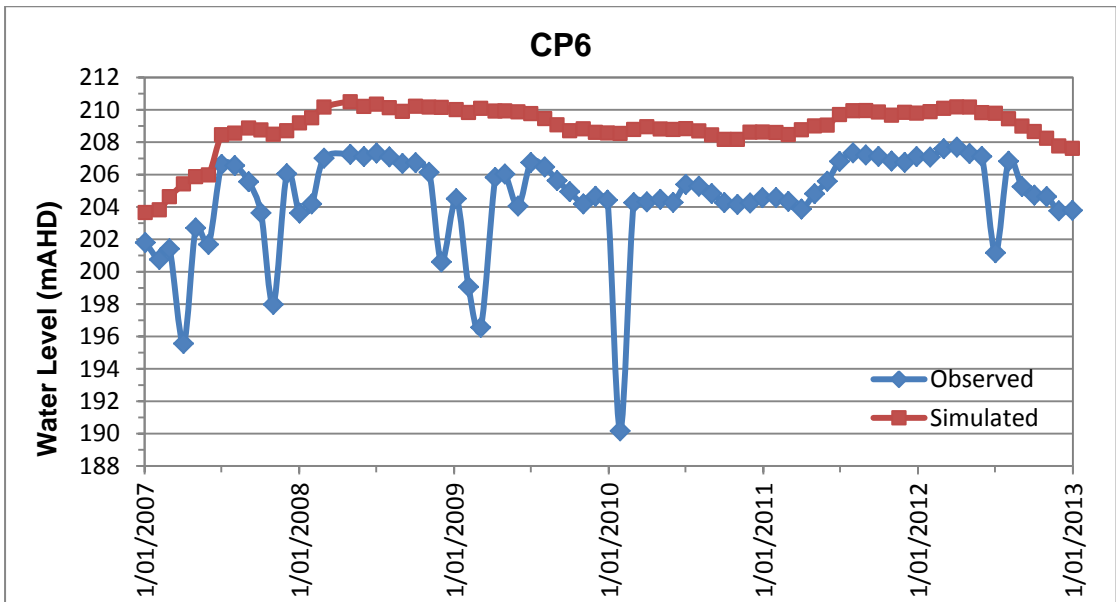
## Group 2: MW Bores





Group 3: CP Bores







## Group 4: GW Bores

