

**Hanson Lysterfield Quarry  
Community Reference Group**

**MINUTES OF MEETING**

<b>Meeting No.:</b>	<b>40</b>	<b>Status of Minutes:</b>	<b>DRAFT</b>
<b>Date:</b>	6 September 2023	<b>Time:</b>	6:00pm
<b>Location:</b>	The Anderson Room, Churchill Waverley Golf and Bowls Club		

<b>Chairman:</b>	Brian Oates (BO)
<b>Present:</b>	
<b>Members:</b>	Wenday Belli (WB) Virginia Bright (VB) Trevor Harley (TH) Clifford Matthews (CM) Susan Pearce (SP) Monica Varcoe (MV)
<b>Presenters/ Observers:</b>	Rob Francis, Hanson (RFs) Garrett Hall (GH), WSP Golder (attending via Microsoft Teams) Darren Pearce (DP). Nick James (NJ), Hanson Lyndel Hunter, LHSC, CRG Secretariat (LH)

<b>Item</b>	
<b>1</b>	<p><b>Welcome</b></p> <p><b>Acknowledgement of Country</b></p> <p>The Lysterfield CRG acknowledges that this meeting is being held on the traditional lands of the Bunurong and Wurundjeri people of the Kulin nation, and pay our respect to their Elders both past, present and emerging.</p> <p><i>Apologies received from:</i></p> <p>Alan Birchall Tony Costanzo Sally Orr Johanna Selleck Paul Dickie</p> <p><i>Absent:</i></p> <p>Clayton Collins Richard Farragher John Farrer Shane Logan Alice MacKenzie Susan Pearce Pablo Perez-Reigosa Marc Chatt</p>

Item	
2	<p><b>Minutes of previous meeting</b></p> <p>Meeting 39 Minutes were distributed on 13 July 2023 and approved by all for online publication.</p> <p><b>Action Tracker</b> from Meeting 39, 7 June 2023</p> <p><b>Issue:</b> <i>Hanson to provide outcome of Site Meeting when conducted.</i> R Francis and G Hall will present in Item 4.</p> <p><b>Issue:</b> <i>Hanson to provide blast map with blast numbers and dates identified.</i> N James will present in Item 5a.</p> <p><b>Issue:</b> <i>Hanson to provide arborists' report.</i> NJ advised that he had a copy available for anyone to review. The document is too large to copy and distribute.</p>
3	<p><b>Communication and Consultation</b></p> <p><u>Community Complaints:</u> <i>Nick James, Hanson</i> <i>(Refer to ATTACHMENT A)</i></p> <p>NJ advised that Hanson had ongoing discussions with a Rowville resident and continued investigation regarding a reversing beeper heard from the direction of the quarry.</p> <p>To better understand the sound the resident was hearing, Hanson took a video and sound recording of a 90-tonne quarry dump truck at Hanson Lysterfield Quarry and played it back for the resident, who said that was not the noise he heard.</p> <p>Hanson asked the resident to phone as soon as he hears any beeping noise outside of the permitted operating hours of 6am to 6pm Monday to Saturday. This is to enable a real time investigation. The source of the beeping noise has not yet been identified as coming from the Hanson quarry or elsewhere.</p> <p>Hanson to investigate other potential sources, including the concrete batching plant and transport hub.</p> <p>In response to the original complaint in October 2022, Hanson conducted an investigation and found:</p> <ul style="list-style-type: none"> <li>· Reverse squawkers rather than beepers are fitted to all quarry vehicles, so beeper noise has not emanated from operations on site at the quarry.</li> <li>· A map of the various operations and natural ridgelines was also provided.</li> <li>· The residence is more that 1km from the secondary crushing plant.</li> </ul> <p>As an ERR representative was not present, there were no community complaints to ERR recorded.</p>
4	<p><b>Presentation: Project Updates</b> <i>Garrett Hall, WSP (via Microsoft Teams)</i> <i>Rob Francis, Hanson</i> <i>(Refer to ATTACHMENT B)</i></p> <p>GH provided a summary of the ERR Inter-Agency Site Meeting conducted on Thursday 31 August 2023. The meeting was attended by representatives of:</p> <ul style="list-style-type: none"> <li>· ERR</li> <li>· Department of Energy, Environment and Climate Action (DEECA)</li> <li>· Department of Transport and Planning (DTP)</li> <li>· EPA Victoria</li> </ul>

Item	
	<ul style="list-style-type: none"> <li>· Fire Resources Victoria (FRV)</li> <li>· Parks Victoria (PV)</li> </ul> <p>GH advised that those present at the meeting were informed that the WA385 Variation satisfactorily addressed environmental concerns related to:</p> <ul style="list-style-type: none"> <li>· Air Quality</li> <li>· Bushfire Risk</li> <li>· Weed Management</li> <li>· Blasting and Vibration</li> <li>· Community Engagement</li> <li>· Geotechnical Risk</li> <li>· Noise Generation</li> <li>· Landscaping / Earthworks.</li> </ul> <p>GH reported that ERR accepted the assessments and control measures related to these matters in its decision to refer the application, and that VCAT had also determined that these risk aspects were satisfactorily assessed and addressed.</p> <p>Attendees were advised that the potential hazards identified were:</p> <ul style="list-style-type: none"> <li>· Surface water flow changes to Churchill Park and Heaney Reserve</li> <li>· Perched aquifer impacts</li> <li>· Impact on GDEs due to hydrological and hydrogeological changes</li> <li>· Loss of native vegetation, and resultant impacts on flora and fauna.</li> </ul> <p>The VCAT determination identified areas of uncertainty for groundwater &amp; surface water:</p> <ul style="list-style-type: none"> <li>· An ephemeral drainage line adjacent to the southern boundary of the quarry, which may comprise of alluvial or colluvial type material.</li> <li>· Whether these lithologies temporarily hold water, forming a localised perched groundwater system that supports vegetation.</li> <li>· Changes to hydrological and hydrogeological inflows supporting this drainage line.</li> <li>· The proposed pit expansion could alter the catchment that feeds the drainage line, and the relationship between the perched system, surface flows and deeper groundwater requires further evaluation.</li> </ul> <p>GH presented images of the existing hydrogeological conditions, demonstrating steep hydraulic gradients due to low rock permeability.</p> <ul style="list-style-type: none"> <li>· The VCAT Decision highlighted the following issues relating to ecology requiring further investigation:</li> <li>· A review of the quality of native vegetation present.</li> <li>· A review of the number of Large Trees present.</li> <li>· A review of potential indirect impacts to biodiversity as a result of: <ul style="list-style-type: none"> <li>▪ Changes to surface water hydrology within the catchment, including the ephemeral drainage line south of the expansion footprint.</li> <li>▪ Groundwater changes resulting in impacts to terrestrial GDEs.</li> </ul> </li> <li>· A revised impact and offset assessment, incorporating all direct and indirect impacts.</li> </ul>

Item	
	<ul style="list-style-type: none"> <li>· A revised assessment and update of potentially suitable risk mitigations and controls relating to ecological values.</li> </ul> <p>GH advised that the hydrology report will be utilised to inform the ecology report.</p> <p>GH provided an image of the native vegetation, highlighting the potentially impacted areas which demonstrate that the ephemeral drainage from the site forms a 'Y'.</p> <p>GH reported that, following the site tour, a roundtable discussion was conducted with questions, comments, and matters to be considered raised by all agencies.</p> <p>FRV wanted to learn more about the bushfire risk, firebreaks and water availability.</p> <p>DEECA were the agency that objected to the Work Plan Variation due to uncertainty regarding risks to the park, however they indicated they were supportive of the proposed studies.</p> <p>Hanson had assumed that no testing would be possible within the park, however PV would like to discuss what investigations can be made. Hanson advised that drilling would be required, and PV responded that they want to work with Hanson to better understand the process. GH advised that this was a good outcome and a good opportunity to develop some data sets.</p> <p>EPA expressed no issues.</p> <p>ERR reaffirmed the process advising that they are treating it as a new application and the submission will be considered afresh. If new information is learned through the hydro assessment, then the Geotech risk analysis needs to be reassessed.</p> <p>ERR also advised that it was happy to host a regular meeting with all agencies and Hanson to ensure process progress, check the adequacy of the studies and discuss risk mitigation. By undertaking this step, there should be no surprises in the submission.</p> <p>GH outlined the next steps and timing, indicating ongoing liaison with all agencies, as well as City of Knox Council, and undertaking detailed hydrological, hydrogeological and ecological technical studies. All pre-existing assessments, plans and documents will be contemporised, and Hanson is planning to resubmit the Work Plan Variation to ERR in the first quarter of 2024.</p>
5	<p><b>5.a Operational Report</b>  <i>Nick James, Hanson</i>  <i>(refer to ATTACHMENT C)</i></p> <p>NJ presented rainfall and dust monitoring results for the period since the last meeting. Rainfall has been low, and for the period June to August, the dust gauges were all low. In August, tree litter was observed in the Park Boundary monitor.</p> <p>VB advised that the Montague Crescent monitor needs to be moved as the readings are being impacted by equestrian movements including horses and vehicles. NJ advised that he would check with Marc Chatt, ERR, as to whether the monitor can be moved by 20 metres.</p> <p>TH requested that the scales of each of the monitoring locations be made uniform to make it easier to compare. NJ agreed.</p> <p>NJ presented blast monitoring results since last meeting, advising that the reading of 4.21 in Somerset Court for Shot 2316, resulted in a reduced shot for Shot 2317, resulting in a drop of 2.18.</p> <p>NJ presented an image of all blast locations, shot numbers and dates for 2023, including future blast locations and shot numbers.</p> <p>NJ presented images demonstrating the flora growth on the Eastern Face rehabilitation program, and the park view of the progressive rehabilitation.</p> <p>NJ advised that Andrew Ritchie, Supply Chain Manager Aggregates Southern Region, had resigned and that Sean McCormick, from Alex Fraser will be filling this role.</p>

Item	
	<p><b>5.b Questions and Answers</b></p> <p><i>Community Engagement Plan:</i></p> <p>BO advised that Hanson would like to increase its engagement with the community and was seeking the advice of CRG members as to:</p> <p>What information does the community need about the Lysterfield Quarry and the expansion application?</p> <p>How should this information be delivered?</p> <p>During discussion, the following was noted:</p> <ul style="list-style-type: none"> <li>· There are two key groups requiring engagement: <ul style="list-style-type: none"> <li>▪ Facility neighbours</li> <li>▪ Environmentalists</li> </ul> </li> <li>· Hanson should be more active educating the community about the types of jobs required in a quarry, operations conducted throughout the quarry, and activities undertaken on the site to support the environment.</li> <li>· Local schools should be provided education opportunities.</li> <li>· Hanson should show what it does for the community.</li> <li>· Community should be encouraged to view what is going on in their backyard as positive rather than negative.</li> <li>· Hanson should consider the use of online social programs such as Instagram, Snap Chat and Tik Tok.</li> <li>· Hanson should consider an Open Day, perhaps with a 'Minecraft' theme.</li> </ul> <p>LH advised that this information, together with information received from other Hanson community groups, will assist the development of a community engagement plan for 2024.</p> <p><i>Community Questions:</i></p> <p>MV advised that since the installation of the barriers on Wellington Road, there have been dust and stones in the gutter. It doesn't appear that the streetsweeper is solving the problem. WB supported this observation.</p> <p>NJ advised that Hanson is not happy with the street sweeper and that Hanson and Boral are considering the use of their water carts. However, this process would require permissions and traffic management to be undertaken.</p> <p>TH advised that the trees and branches are still against his fence. NJ committed to follow up immediately.</p>

<b>Meeting Closed:</b>	7.45pm
<b>Next Meeting:</b>	<b>Meeting 41      8 November 2023</b>

**ACTION TRACKER**

<b>Item</b>	<b>Issue</b>	<b>Action</b>	<b>By</b>
5.a.	Hanson to check with ERR as to whether Montague Crescent monitor can be moved by 20 metres	NJ	06.09.23
5.a.	Hanson to present Dust Monitoring scales of each of the monitoring locations using a uniform scale	NJ	06.09.23
5.b.	Hanson to follow up on removal of trees and branches against TH property fence	NJ	06.09.23



# Community Complaints Update

## Lysterfield Quarry

6<sup>th</sup> September 2023



# Complaints received by Hanson

Address	Complaints / Allegations	Response	Source
Rowville	<p>Reversing beeper heard coming from the direction of the quarry at 10:05am Sat 28/8/23.</p> <p>This is the same reverse beeper noise reported to Hanson on Friday 30/9/22 and 11:27am on Sat 17/12/22 .</p>	<p>Hanson took a video and sound recording of a 90 tonne quarry dump truck at Hanson Lysterfield Quarry and played it back for the resident, who said that was not the noise he heard.</p> <p>Hanson asked the resident to phone as soon as he hears any beeping noise outside of the permitted operating hours of 6am to 6pm Monday to Saturday. This is to enable a real time investigation.</p> <p>The source of the beeping noise has not yet been identified as coming from Hanson or elsewhere.</p> <p>Hanson to investigate other potential sources, including the concrete batching plant and transport hub.</p> <p>In October 2022 Hanson conducted an investigation and found:</p> <ul style="list-style-type: none"> <li>• Reverse squawkers rather than beepers are fitted to all quarry vehicles, so beeper noise has not emanated from operations on site at the Quarry</li> <li>• A map of the various operations and natural ridgelines was also provided.</li> <li>• The residence is more that 1km from the secondary crushing plant.</li> </ul>	SMS to Hanson



# Complaints received by ERR

---

# Questions?

---



**Nick James**

*Lysterfield Quarry Manager*

P: 03 9274 3700

M: 0418 478 281

E: Nick.James@hanson.com.au



**Rob Francis**

*Sustainability Support &  
Project Development Manager*

P: 03 9274 3700

M: 0499 833 499

E: robert.francis@hanson.com.au



# Hanson Lysterfield Quarry Extension

**SUMMARY OF ERR INTER-AGENCY SITE  
MEETING**

**CRG PRESENTATION**

6 September 2023





## ERR INTER-AGENCY SITE MEETING

## ERR Site Meeting

On Thursday 31 August Hanson hosted the ERR Site Meeting for the proposed quarry extension and Work Plan Variation.

It was well attended by many agencies, whom included:

- **ERR**
- **DEECA**
- **Parks Victoria**
- **EPA Victoria**
- **FRV**
- **DTP.**



## ERR INTER-AGENCY SITE MEETING

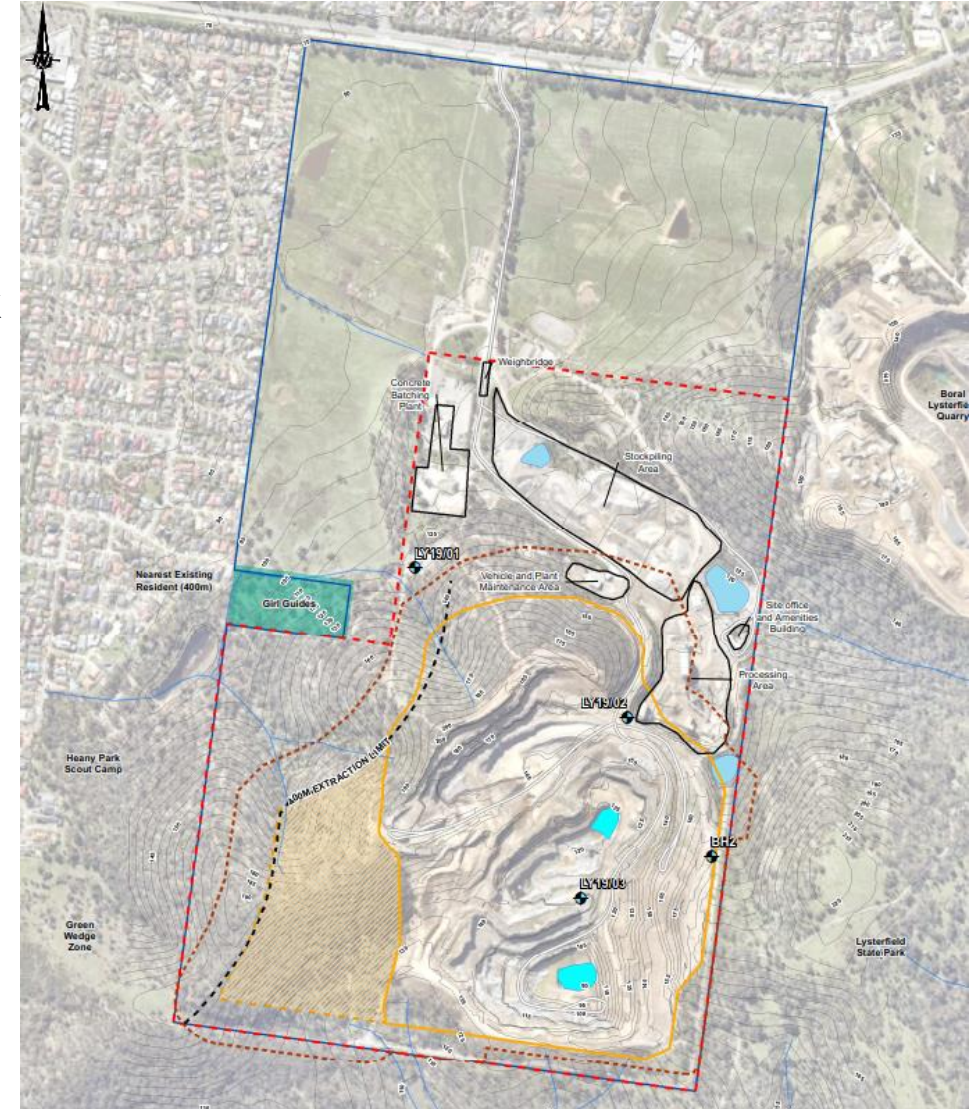
## Project Overview

The WA385 Variation satisfactorily addressed environmental concerns related to:

- Air Quality
- Bushfire Risk
- Weed Management
- Blasting and Vibration
- Community Engagement
- Geotechnical Risk
- Noise Generation
- Landscaping / Earthworks.

ERR accepted the assessments and control measures related to these matters in its decision to refer the application.

VCAT also determined these risk aspects were satisfactorily assessed and addressed.

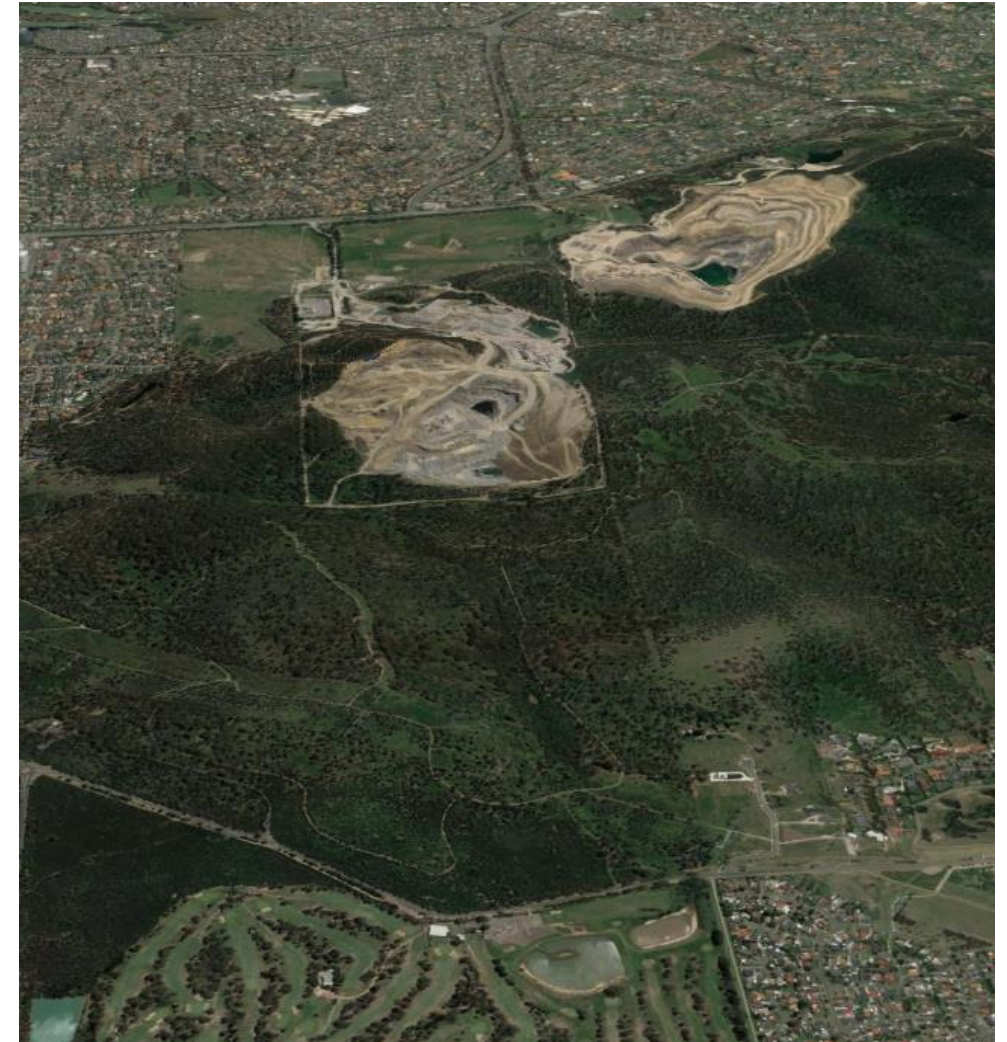




## Project Risks, Planning & Environment

### Potential Hazards

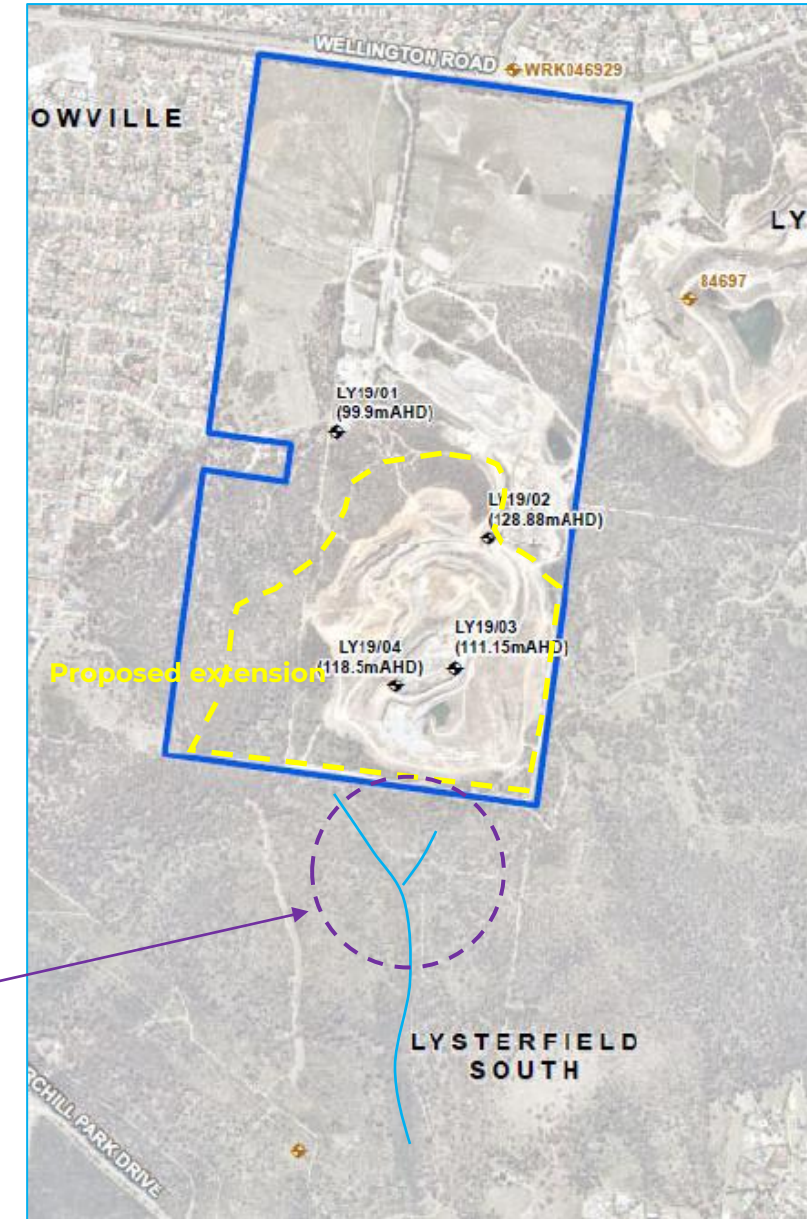
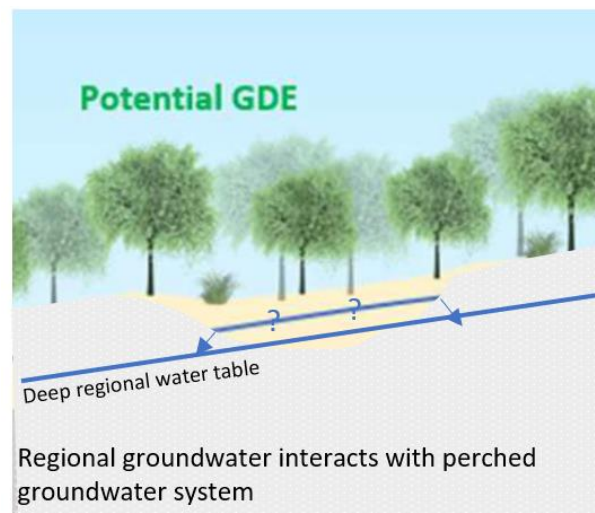
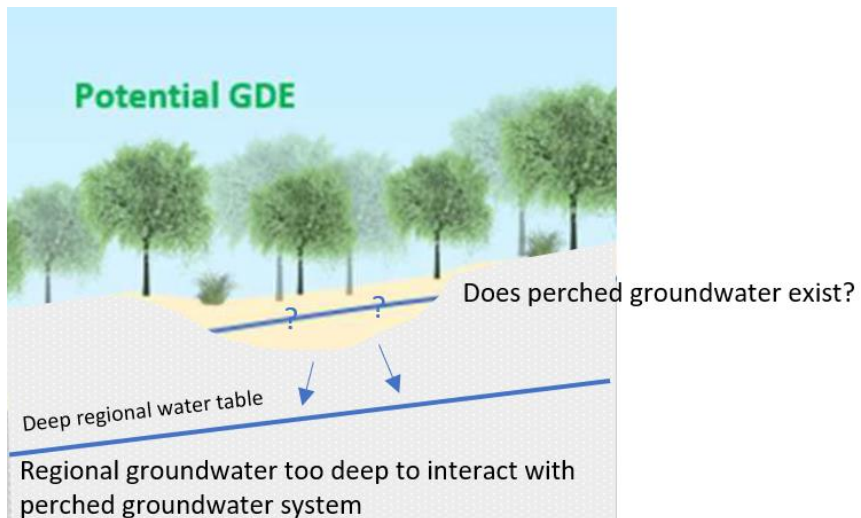
- Surface water flow changes to Churchill Park and Heaney Reserve
- Perched aquifer impacts
- Impact on GDEs due to hydrological and hydrogeological changes
- Loss of native vegetation, and resultant impacts on flora and fauna



## Areas of uncertainty

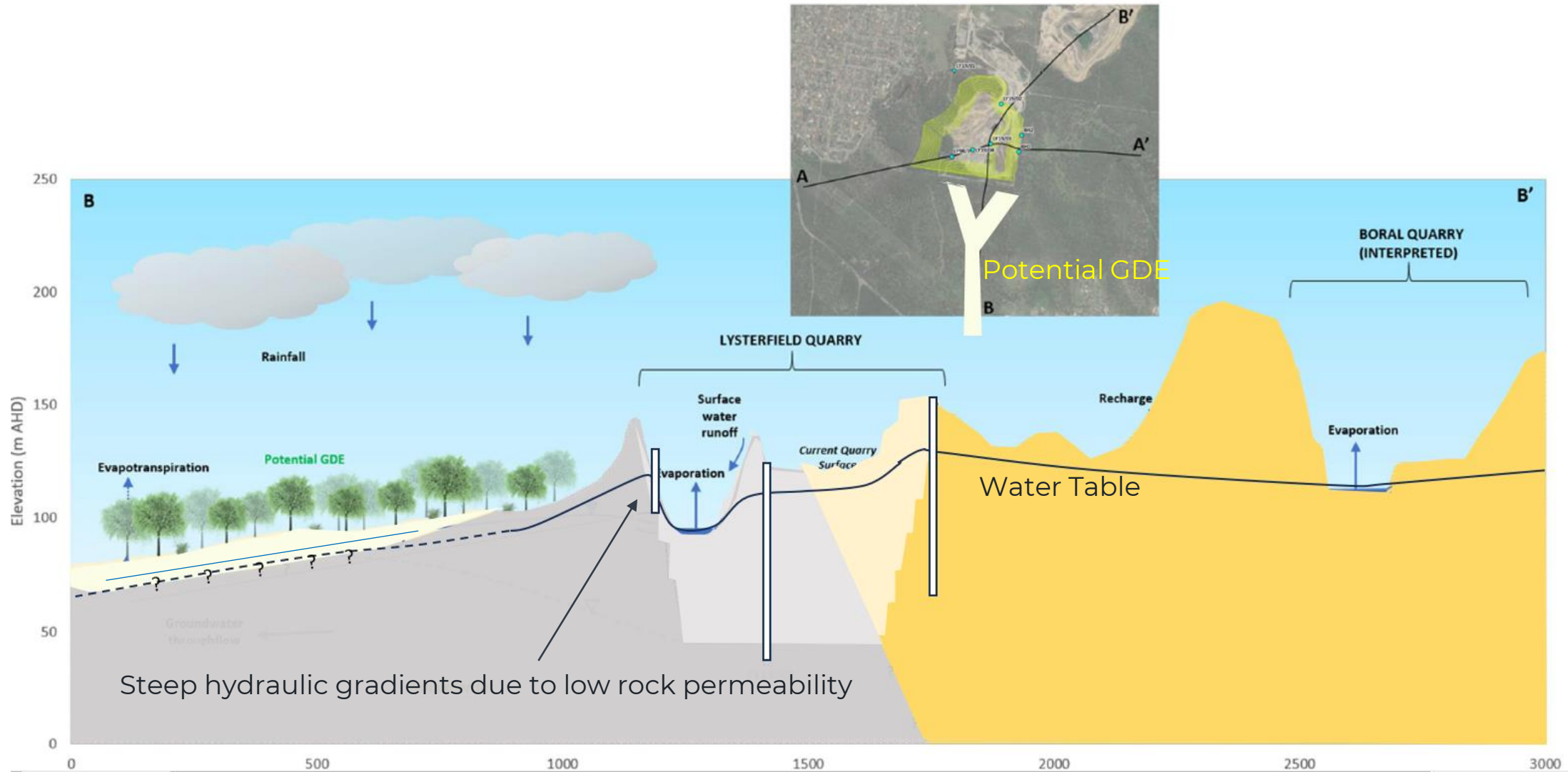
The VCAT determination identified areas of uncertainty for groundwater & surface water:

- An ephemeral drainage line adjacent to the southern boundary of the quarry, which may comprise of alluvial or colluvial type material
- Whether these lithologies temporarily hold water, forming a localised perched groundwater system that supports vegetation
- Changes to hydrological and hydrogeological inflows supporting this drainage line
- The proposed pit expansion could alter the catchment that feeds the drainage line, and the relationship between the perched system, surface flows and deeper groundwater requires further evaluation





# Existing Hydrogeological Conditions

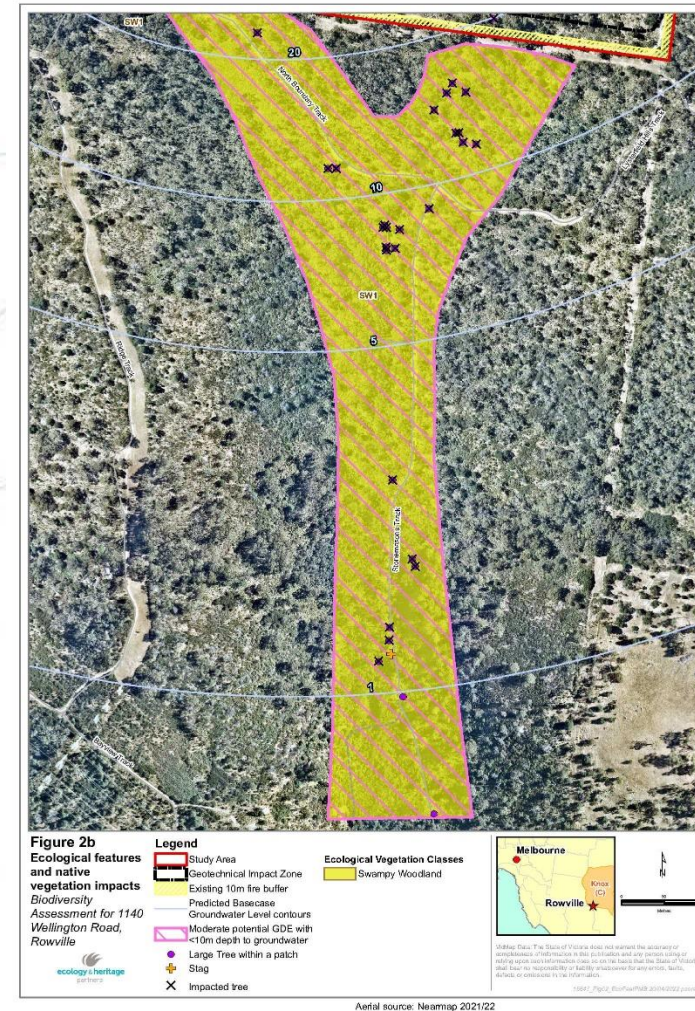
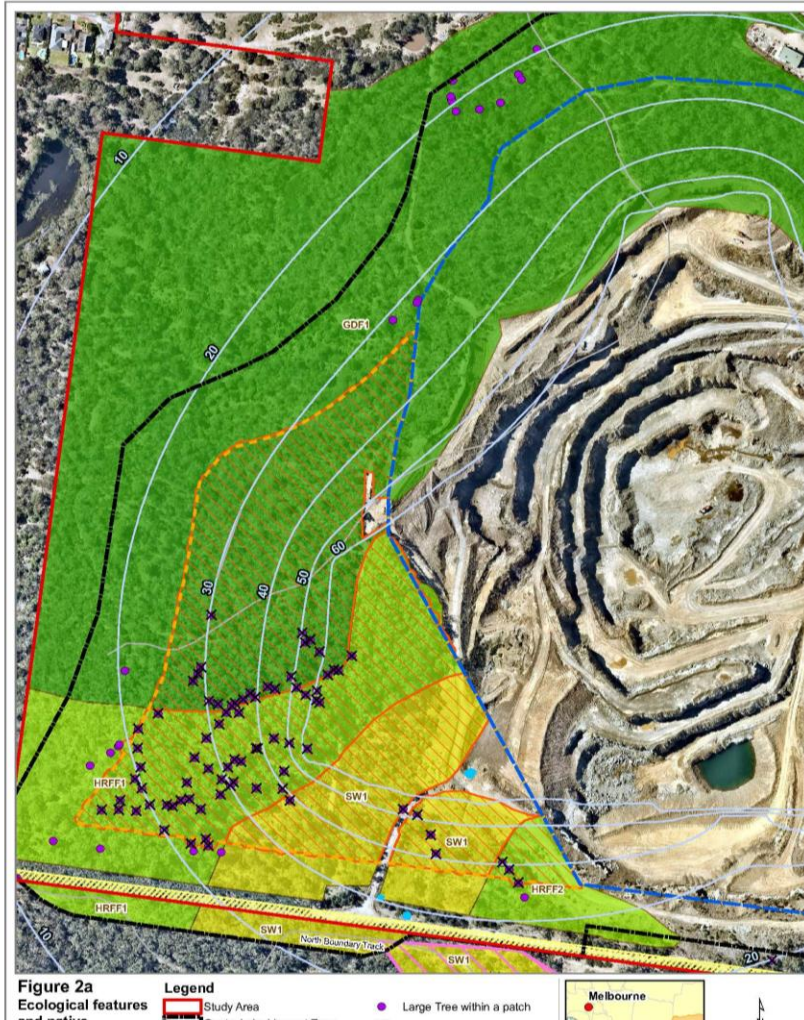


# VCAT Decision

- The VCAT Decision highlighted the following issues relating to ecology requiring further investigation:
  - A review of the quality of native vegetation present;
  - A review of the number of Large Trees present;
  - A review of potential indirect impacts to biodiversity as a result of:
    - Changes to surface water hydrology within the catchment, including the ephemeral drainage line south of the expansion footprint;
    - Groundwater changes resulting in impacts to terrestrial GDEs;
  - A revised impact and offset assessment, incorporating all direct and indirect impacts;
  - A revised assessment and update of potentially suitable risk mitigations and controls relating to ecological values.



# Native Vegetation



Aerial source: Neamap 2021/22





ERR INTER-AGENCY SITE MEETING

# Agency Roundtable Discussion

## Questions, comments and matters to be considered

- FRV
- DEECA
- Parks Victoria
- EPA Victoria
- ERR
- DTP



## ERR INTER-AGENCY SITE MEETING

## Next Steps and Timing

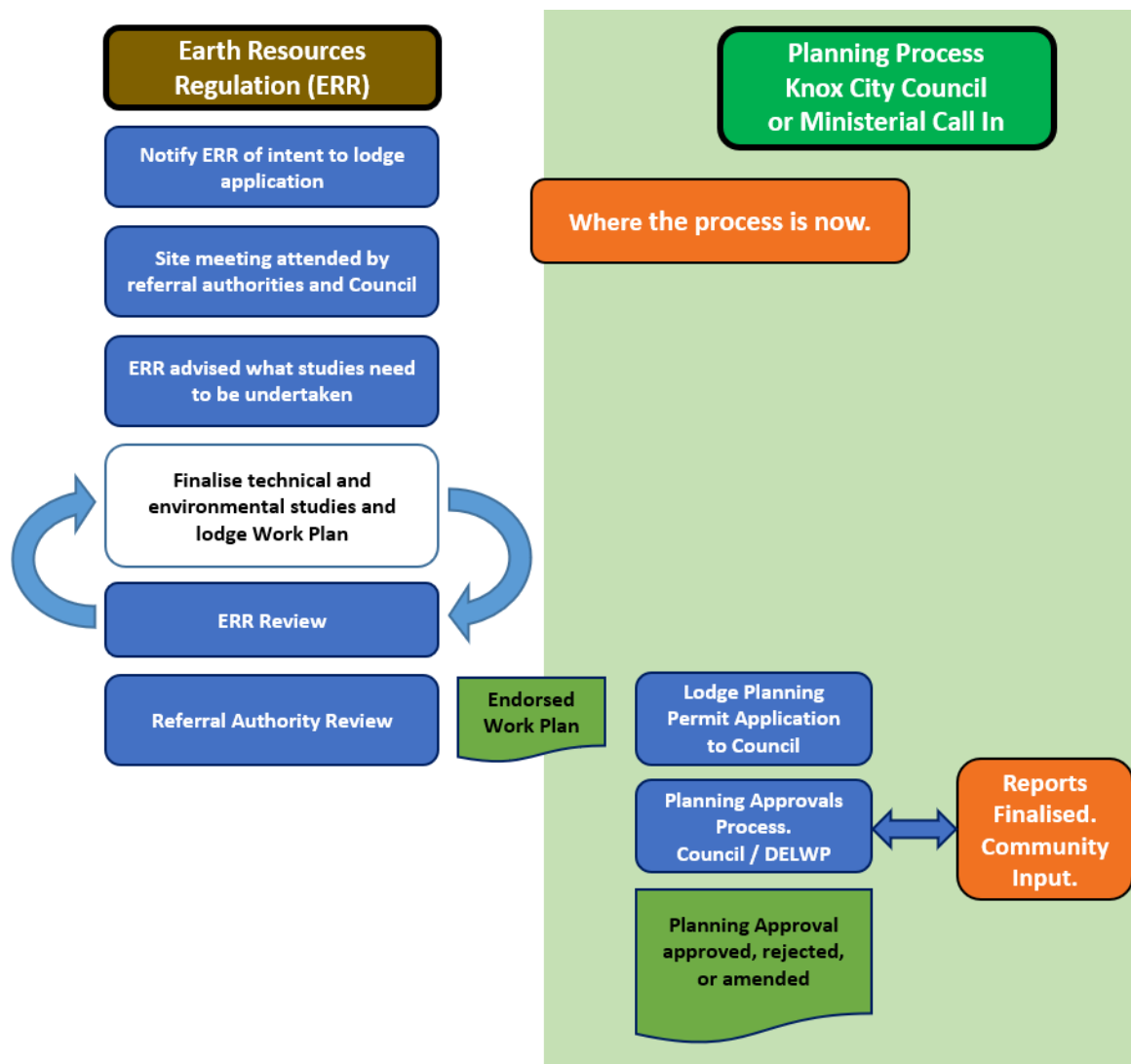
Ongoing liaison with:

- ERR
- DEECA
- Parks Victoria
- EPA Victoria
- FRV
- DTP
- City of Knox (Council)

Detailed Hydrological, Hydrogeological and Ecological Technical Studies

Contemporising Pre-existing Assessments, Plans and Documents.

Work Plan Variation submitted to ERR.





# Operational Report

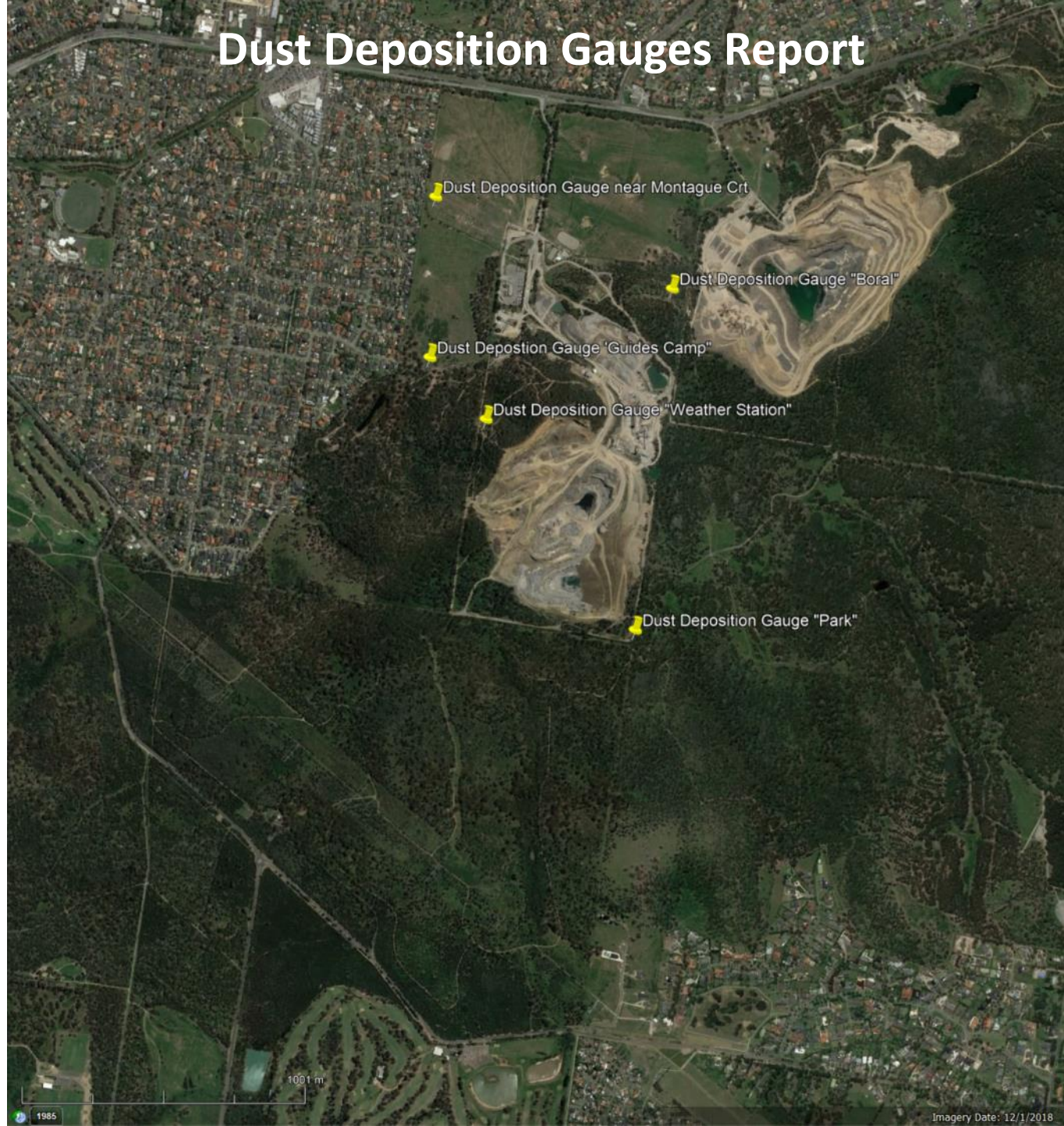
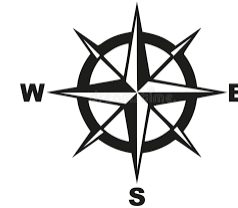
## Lysterfield Quarry

6<sup>th</sup> September 2023



# Dust Deposition Gauges Report

Attachment C

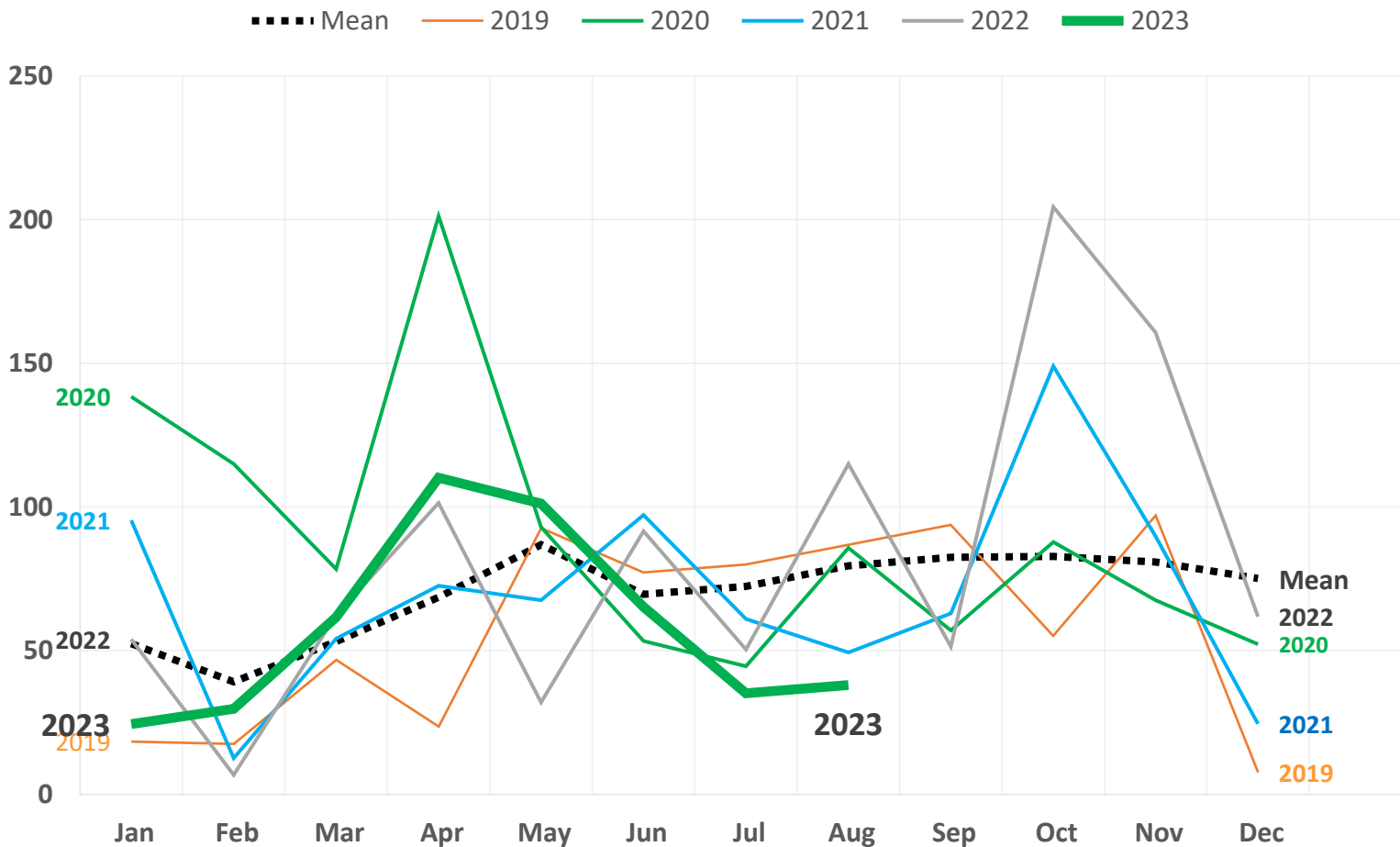




# Rainfall Data

[http://www.bom.gov.au/jsp/ncc/cdio/weatherData/av?p\\_nccObsCode=136&p\\_display\\_type=dailyDataFile&p\\_startYear=&p\\_c=&p\\_stn\\_num=086104](http://www.bom.gov.au/jsp/ncc/cdio/weatherData/av?p_nccObsCode=136&p_display_type=dailyDataFile&p_startYear=&p_c=&p_stn_num=086104)

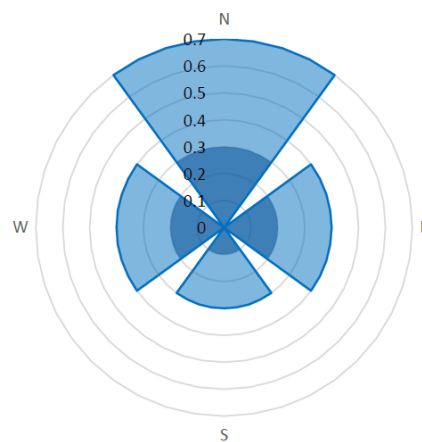
## TOTAL VS MEAN RAINFALL SCORESBY



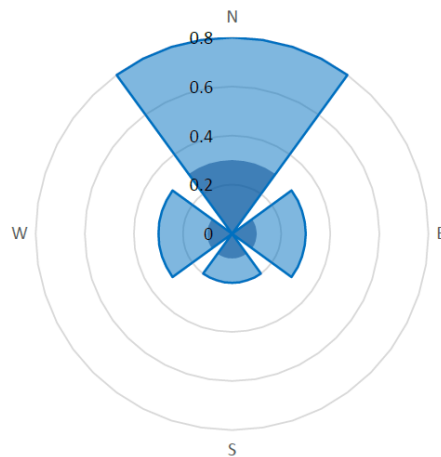
Statistic	Jan	Feb	Mar	Apr	May	Jun	Jul	Aug	Sep	Oct	Nov	Dec
Mean	53.8	52.0	53.4	69.0	86.2	69.9	72.1	80.0	81.5	85.0	82.1	74.2
Median	52.5	38.3	46.9	66.8	82.1	66.4	69.6	83.1	77.8	78.1	75.0	71.3

August 2023

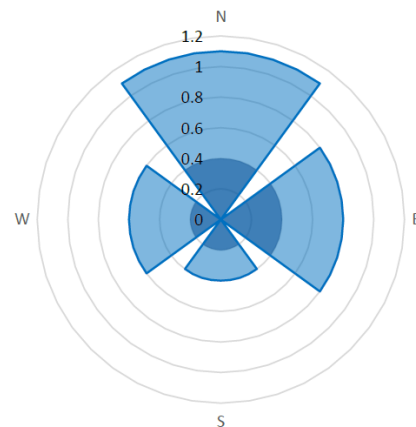
Montague Cres →



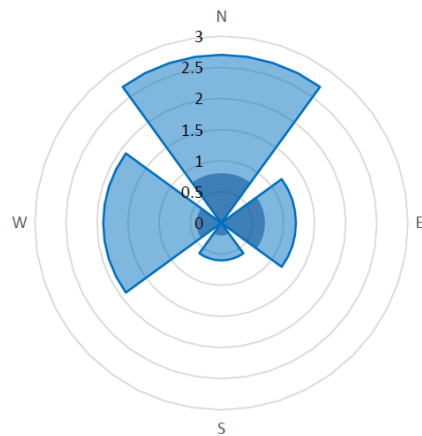
← Guides Camp



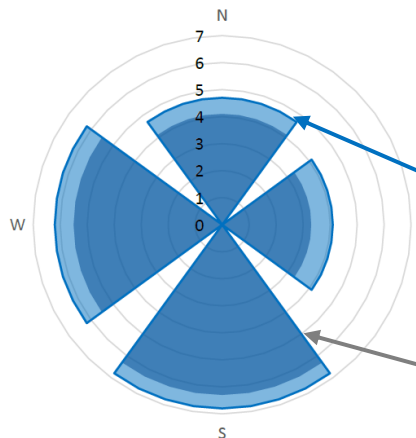
Boral Boundary →



← Weather Station



Park Boundary →



Date range 07/07/2023 – 08/08/2023

Adopted EPA Vic Guideline. 4g/m²/month

Park Boundary:

- Comments: Tree litter observed in deposition gauge
- Ash: North 4.1, East 3.3, South 6.3, West 5.5 g/m²/month

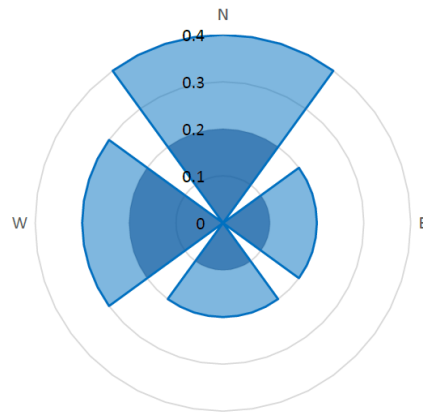
All other gauges low.

■ Ash (g/m2/month)

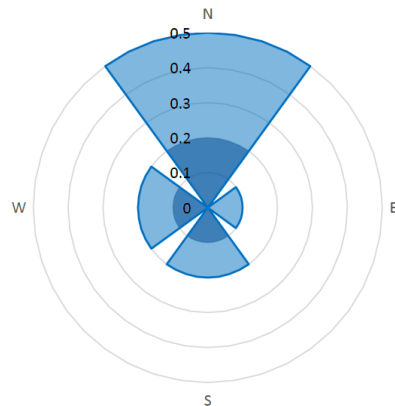
■ Insoluble Solids (g/m2/month)

July 2023

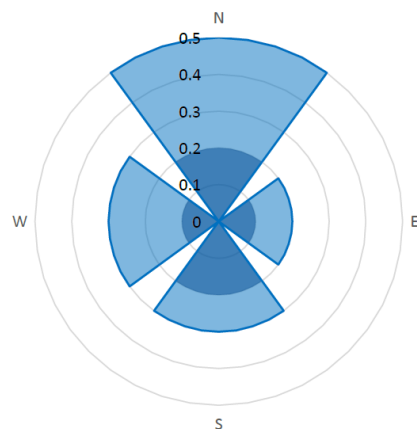
Montague Cres →



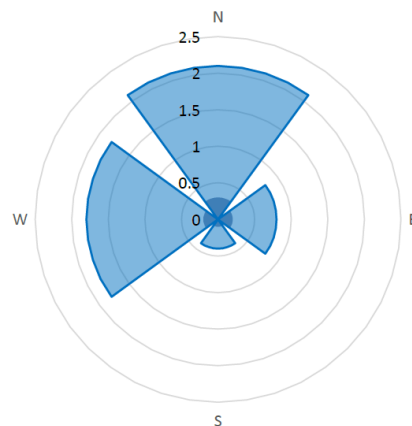
← Guides Camp



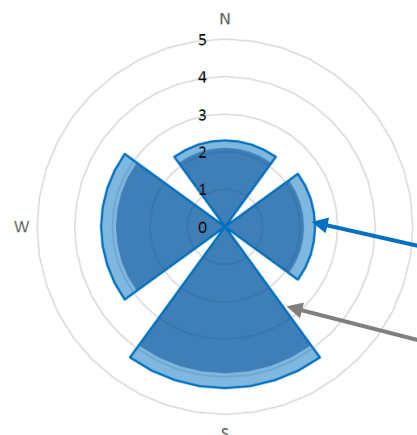
Boral Boundary →



← Weather Station



Park Boundary →



Comments.

Date range 07/6/2023 – 07/07/2023

Adopted EPA Vic Guideline. 4g/m²/month

Park Boundary Ash 3.9g/m²/month

All other gauges low.

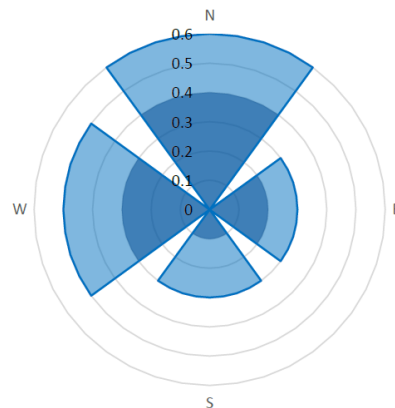
■ Ash (g/m²/month)

■ Insoluble Solids (g/m²/month)

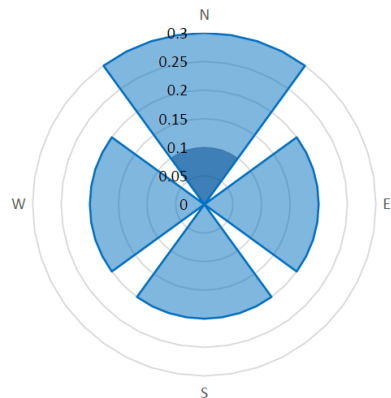


June 2023

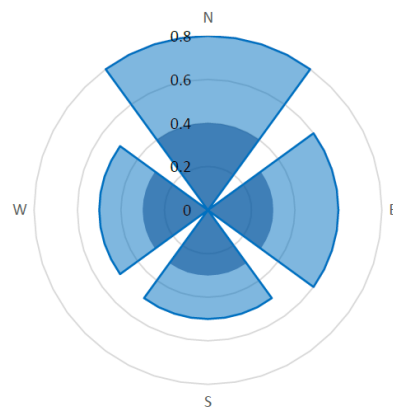
Montague Cres →



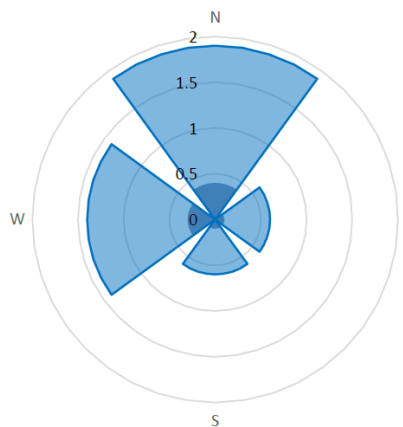
← Guides Camp



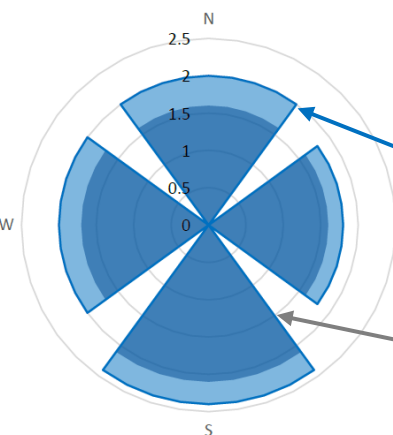
Boral Boundary →



← Weather Station



Park Boundary →



Comments.

Date range 08/05/2023 – 07/06/2023

Adopted EPA Vic Guideline. 4g/m<sup>2</sup>/month

All gauges low.

■ Ash (g/m<sup>2</sup>/month)■ Insoluble Solids (g/m<sup>2</sup>/month)

# Blast Monitor Locations



# Blast monitoring results since last meeting

SHOT no.	Date	Sandford Close		Quarry Gate Slab		Battersby Way		Reservoir Crescent		Somerset Court		Weather Conditions
		VIBRATION mm/s	AIR BLAST dbL	VIBRATION mm/s	AIR BLAST dbL	VIBRATION mm/s	AIR BLAST dbL	VIBRATION mm/s	AIR BLAST dbL	VIBRATION mm/s	AIR BLAST dbL	
Limits		10.00	120.00	10.00	120.00	10.00	120.00	10.00	120.00	10.00	120.00	
2314	15-Jun-23	1.35	99.00	0.63	94.40	0.29	104.78	1.68	98.38	2.60	98.38	CLOUDY
2315	23-Jun-23	1.21	103.74	0.68	103.91	0.19	106.59	1.38	106.79	3.35	109.85	RAINING
2316	04-Jul-23	1.18	103.71	0.50	102.76	0.15	100.37	1.41	98.63	4.21	106.91	RAINING
2317	20-Jul-23	0.72	107.99	0.49	96.93	0.13	106.29	0.79	107.75	2.03	107.97	SUNNY
2318	04-Aug-23	0.75	110.53	0.80	97.37	0.24	109.74	1.49	97.08	2.03	106.29	SUNNY
2319	04-Aug-23	0.75	110.53	0.80	97.37	0.24	109.74	1.49	97.08	2.03	106.29	SUNNY
2320	10-Aug-23	0.89	95.36	0.39	101.69	0.15	96.14	1.17	93.55	2.68	101.86	CLOUDY
2321	24-Aug-23	0.95	100.42	0.45	97.51	0.23	114.17	1.19	103.77	1.33	103.81	SUNNY

\*Exceedance of Air Blast limit at Battersby Way on 05-May-2023



## Action Tracker: Blast locations in 2023





# Eastern Face Rehabilitation





# 2017 View of Eastern Face from Quarry





# Progressive Rehabilitation – National Park View



# Questions?

---



**Nick James**

*Lysterfield Quarry Manager*

P: 03 9274 3700

M: 0418 478 281

E: [Nick.James@hanson.com.au](mailto:Nick.James@hanson.com.au)