

Meeting Minutes and Newsletters: <https://www.hanson.com.au/about-us/regulatory-information/lysterfield-quarry/>

Lysterfield Quarry Community Reference Group (CRG):

- 14 community members: even mix of men and women who live close to, or have an interest in, the Hanson Lysterfield Quarry.
- We have been operating for 4 years. Our first meeting was April 2016.
- Members are from a wide range of backgrounds and attend meetings and site tours voluntarily.
- Our interests in the quarry vary, but cover all key concerns of the Rowville Lysterfield community.
- Agendas are written by us. We call on Hanson to deliver information as requested. All meetings are attended by Taylor Ward Councillor, Cr Darren Pearce, Senior Knox City Council Planning Officer as well as an Earth Resources Regulation Inspector. They provide information and advice when required.
- We have sought Hanson's assistance to ensure the community receives information about the Hanson Lysterfield quarry.
- Hanson uploads, funds production and distribution of all Lysterfield Quarry Community Reference Group newsletters.
- Current meetings are conducted via video link in line with COVID-19 restrictions.

contents

Join us	1
CRG member profiles	2
Quarry extension	4
Compliance: Checking it is done right	6
We address your concerns	8
Closing the quarry is not the solution	12

Join us

All CRG members either live or work in the neighbourhood surrounding the Hanson Lysterfield Quarry.

On a daily basis, like everyone else, we experience the same dust, blasting vibration, mud and trucks on Wellington Road. But, by participating in the CRG, we learn the facts and are in a position to encourage Hanson to consider our concerns. Through our regular meetings, presentations and discussions, we are also able to contribute to the future planning of the quarry.

We are from different backgrounds and have different concerns about the quarry. The one thing we have in common is that we care about our environment, neighbourhood and community.

We encourage you to:

- Check out the Minutes of our meetings, including the presentations and reports, by logging on to <https://www.hanson.com.au/about-us/regulatory-information/lysterfield-quarry/>
- Read our Newsletters, also available by logging on to <https://www.hanson.com.au/about-us/regulatory-information/lysterfield-quarry/>

- Send us your question or concern so that we can address it at our next meeting by emailing community.vic@hanson.com.au
- Register for the SMS Blasting Notification Service. Hanson will provide you with advance notice of a blast by sending you an SMS the day prior. Send an email to community.vic@hanson.com.au
- JOIN US! We welcome new members, new viewpoints, new ideas and new solutions. Download the CRG Information Pack by logging on to <https://www.hanson.com.au/about-us/regulatory-information/lysterfield-quarry/>

Susan Pearce **CRG Member (April 2019)**

My husband, two children and I have been living in Rowville for the past 17 years. We chose the area because we liked the peaceful outlook and its proximity to the National Park, as well as schools and the freeway.

We were aware of the quarries when we purchased our land and were concerned about how it may impact the lifestyle we were seeking. But we did our due diligence and found information about the two quarries prior to building our home.

I operate my accounting practice from home, so I notice

the occasional tremor but put it down to living near the quarry. The tremors were not of concern to me as they were only once or twice per week.

I noticed on Facebook, and with discussions with people in the area, that they were concerned about the quarry's activities. Rather than listening

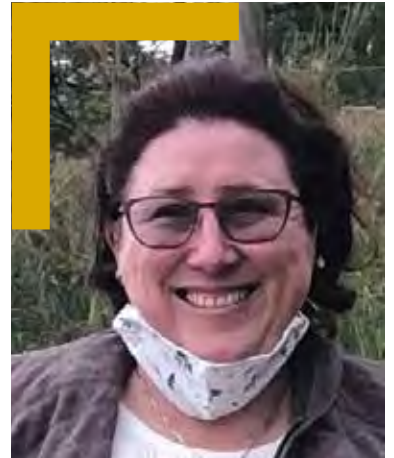
to the diverse information being conveyed within the community and on Facebook, I decided to find out for myself.

I attended the Lysterfield Quarry CRG pop-up display booth at Wellington Village Shopping Centre in March 2019 and obtained more information about the quarry, its activities and its future plans. I also learned about the CRG, which I joined the following month. I thought it was a good opportunity

The quarry representatives also have a genuine interest in the views of the community, and demonstrate a willingness to help wherever possible.

to get the facts for myself and to be able to provide my neighbours and the wider Rowville community with the information.

I appreciate that the CRG comprises a wide cross-section of the community with wide ranging views. The members have a genuine interest in finding



out about the quarry, and an interest in the community. I have found the group willing to listen and to discuss alternative viewpoints. The quarry representatives also have a genuine interest in the views of the community, and demonstrate a willingness to help wherever possible.

I have found the CRG to be an informative forum that reflects and represents issues raised by the wider community.

From the CRG Chairman



Brian Oates – GAICD JP

Thank you for taking the time to read this, our 4th CRG Newsletter. I'm sure you'll find something of interest.

I am engaged by Hanson as the external independent Chair of the CRG meetings and have been involved since late 2015.

I was approached by Hanson to take up the role of Chairman due to my many years' experience chairing community meetings. I have been a councillor, a Mayor and, recognising the growing need for community consultation, graduated from the Australasian Institute of Public Participation with a Certificate of Community Consultation in 2014. I also

graduated from the Australian Institute of Company Directors in 2018. My first involvement in formal legislated community consultation was chairing the Consumer Advisory Committee of the (then) Southern Public Health Service from 2009 to 2012. For the past few years, I have chaired community groups related to large urban infrastructure facilities in the south east region.

My experience is that community participation is a great enabling strategy in responding to the perceptions and needs of local communities, and that an active participatory community can guide an organisation's operational and environmental activity.

We are ahead of the game here with a great and knowledgeable core group of people who, from day one, have been actively involved and bring a wealth of experience to the meetings. There have been many who have joined for months or years, but there is always a welcome for more interested people to join the group.

CRG members are needed, and certainly improve outcomes and quality of service. CRGs ensure accountability of managers and are an important part of the democracy of our nation. This CRG is committed and has continued to regularly meet online and work collectively through the COVID19 crisis.

newsletter

Wendy Belli

Founding CRG Member (April 2016)



I have been a Rowville resident for 21 years. My husband and I chose the area for its outlook to the adjoining Churchill National Park and access to the Dandenongs. We discovered quite quickly that the land was close to an active quarry, and this did concern us. Our main concern was that the quarry would be closed and become a tip.

We looked further into the details of the quarry, and were assured within our checks that this would never be the case, although the quarry could quite possibly be active for the next 50 years depending on what they were able to extract. We chose to build here and have since added two children to our family.

While at home raising my kids, I did begin to notice the occasional rumble which I now know were blasts at the quarry. At first I was worried, thinking

what on earth could this be doing to my home? We had a building inspection carried out and were told that our house was sound. However, there were other issues pertaining to the quarry that did cause us some concern. The traffic and mess on Wellington Road, the dust at our home and on our cars.

In August 2015, we attended a community meeting at Aimee Seebeck Hall to encourage communication and consultation

between the local residents and the two quarries in the area. My husband and I were able to discuss our concerns at the time, and we were two of the last to leave.

Following that meeting, Hanson established a Community Reference Group to gain a better understanding of residents' concerns, and enable them to work more directly with the local community. My husband and I decided that, rather than not knowing any details of the operations at the quarry, I would join and see what it is all about.

So I became a member of the CRG and have sat on the group for the past four years. I, and all the other CRG members, do this voluntarily. We were not chosen or handpicked. We are residents with a genuine interest who have put our hands up and attend the meetings and site tours regularly.

As a group of community members, we have achieved some positive results working with Hanson and external authorities. We have worked with the quarry to make some visible improvements with more to come. It is an ongoing process and we will continue to pursue solutions to

We are transparent. Anyone can see that the issues raised by our community are robustly discussed at our meeting.

issues brought to us by our broader community, and issues we personally feel need to be addressed.

It makes me quite sad when I read that we are a group who are not genuine. I feel really strongly about the role we play in the communication between us and the Hanson Lysterfield Quarry. I feel we do address all the issues raised and discuss them at length. The Minutes of all of our meetings from the beginning of the CRG are available to anyone who wishes to access them on the Hanson website. We are transparent. Anyone can see that the issues raised by our community are robustly discussed at our meetings.

Why not join us and contribute to the discussions? Anyone is welcome, regardless of your role in our community. If you have an interest, and wish to assist us to continue our work, you are welcome.

CRG member profiles

From the Quarry Manager



Strong community relationships are important to Hanson, and the value of community engagement is recognised. So the CRG is important to us.

By providing relevant information regarding the quarry to the CRG, responding to their concerns, and seeking input on a wide range of operational, environmental and community issues, we are able to offer consistent operational and environmental performance improvement.

The CRG comprises individuals with wide ranging backgrounds who have volunteered their time to attend regular meetings, seek responses to community concerns, and contribute to the future planning of the quarry. While Hanson funds the venue, catering and secretariat fees, meeting agendas are developed by CRG members. Their requests for information, presentations or reports are always provided.

The CRG has driven a number of changes to the quarry's operation and future planning. Hanson is appreciative of the commitment of the CRG members to providing input into Hanson's decision making process regarding the quarry, and to representing our neighbours in the Rowville/ Lysterfield community.

*Lachlan McRae
Lysterfield Quarry Manager
lachlan.mcrae@hanson.com.au*

Quarry Extension

Buffer Zone Map

- Lysterfield Quarry boundary
- Current limit of extraction: 380m
- Original buffer area: 300m
- Proposed decreased buffer area: 400m

In November 2018, Hanson provided a presentation and information relevant to a proposed extension of the Lysterfield Quarry to the CRG. Since then, every CRG meeting has included an update of the proposal and opportunities for CRG members to provide input to the plan.

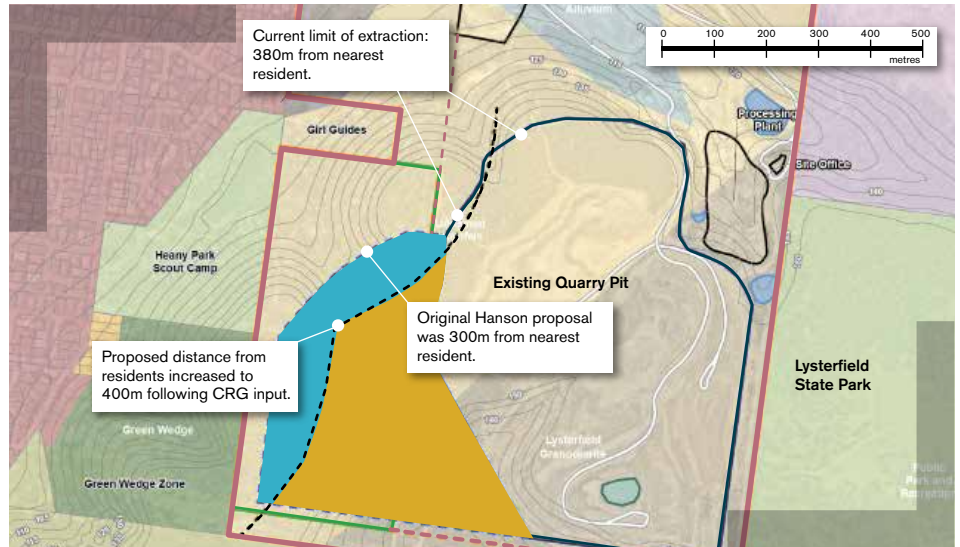
The extension proposal is to extract hornfels and granite in a westerly and south-westerly direction from the quarry's current limit. To achieve this, Hanson must first obtain an approved Work Plan from Earth Resources Regulation (ERR), then a Planning Permit from Knox City Council, followed by a Work Authority approved and issued by ERR.

Hanson commenced the process by lodging a Work Plan application with ERR in December 2019. ERR has sought further and subsequent information which is currently being prepared for resubmission.

Throughout this process, the views and input of CRG members have been considered resulting in a number of changes to the proposal. Progress updates from rehabilitation studies being undertaken have been presented at our meetings by the technical experts, and we have also had presentations and information provided by ERR and the Council.

The most important, and the most discussed broadly by the community, is the buffer. When the proposal was first presented to the CRG, the buffer was planned to be 300 metres between the limit of the extraction area and the nearest resident. Following our input, Hanson extended the buffer to 400 metres.

An interesting fact we learned is that the current limit of extraction is at approximately 380 metres. Therefore, with a 400 metre buffer, the quarry will now be slightly further away from the nearest resident.



CRG tour of National Park, Sep 2019



Lysterfield Quarry view from National Park, Feb 2020

We have also influenced the rehabilitation design that defines how the quarry will be shaped for our future use. Community sporting and equestrian facilities are now included in the final rehabilitation plan and,

Hanson's Victorian quarries, like all quarries in the state, are a key component in the supply chain required to respond to the government's strategies for economic recovery.

while Hanson presented a series of elevation sight lines demonstrating the extended quarry pit would not be visible from nearby homes, a CRG member highlighted that the view from the National Park had not been considered. Following a CRG led walk through the Park with Hanson staff, the rehabilitation plan has now been altered to make sure the Park view is considered. The planting schedule has now been updated

and progress reports, including images from the Park, are provided at every CRG meeting.

As we outlined in our CRG Newsletter Issue #3, the need to increase the quarry is being driven by the Victorian Government's increased major metropolitan infrastructure program. This need has now increased with the Andrews Government identifying Victoria's building and construction sector as a key mechanism to revitalise Victoria's economy during the coronavirus (COVID-19) pandemic.

Hanson's Victorian quarries, like all quarries in the state, are a key component in the supply chain required to respond to the government's strategies for economic recovery. And a key ingredient for all this new infrastructure currently lies beneath the ground in Victoria – more specifically, in Lysterfield. This has resulted in the Hanson Lysterfield Quarry being placed on the Victorian Government extractive industry priority project list.

newsletter

Quarry Extension Application Process



If you want to know more about the quarry extension, we encourage you to have a look at the Minutes of our meetings at <https://www.hanson.com.au/about-us/regulatory-information/lysterfield-quarry/>. Or if you have any questions you want us to ask on your behalf at our meetings, send us an email at community.vic@hanson.com.au. Better still, join us.

Compliance: checking it is done right

One of the first things we learned by attending CRG meetings is that no quarry in Victoria can operate without prior approval of both the Victorian Government and local government, and is subject to ongoing monitoring, assessment and reporting.

To obtain a Planning Permit from Knox City Council, Hanson must submit a Work Plan including results of a wide range of studies from Cultural Heritage to post closure rehabilitation. The Work Plan must be in accordance with the *Mineral Resources (Sustainable Development)*

(*Extractive Industries*) Regulations 2019, which is regulated by Earth Resources Regulation (ERR). Then all facets of the quarry's operation are required to meet compliance standards which are regularly monitored, assessed and reported to ERR and the CRG.

“Our role is to ensure earth resources activities are conducted safely to protect people, property, infrastructure and the environment. We enforce laws to ensure that mine, quarry and petroleum operators fulfil their obligations to safeguard the community and environment.”

Earth Resources Regulation is the Victorian Government regulator of quarrying and other earth resource activities.

Source: <https://earthresources.vic.gov.au/about-us/our-role/earth-resources-regulation>

COMMUNITY CONCERN	COMPLIANCE REQUIREMENT	MONITORING RESULTS / ACTION UNDERTAKEN
HOURS OF OPERATION Concern that Hanson is operating outside hours of operation.	<ul style="list-style-type: none"> Hours of operation are defined by Work Authority WA385 and monitored by ERR. Monday to Saturday 6:00am to 6:00pm. Secondary crushing plant until 10:00pm Monday to Saturday Essential maintenance is permitted outside of these hours. State Environment Protection Policy (Control of Noise from Commerce, Industry and Trade) No. N-1 (SEPP N-1). 	Community complaints identified misinterpretation of location of transport hub within Works Approval area. To ensure trucks do not enter or leave the site prior to 6am, Hanson: <ul style="list-style-type: none"> Applied automatic error warnings in truck routing software to ensure trucks are not routed to Lysterfield between 6pm and 6am. Erected a large sign at the Wellington Road entrance. Stationed a traffic management sentry operator at the Wellington Road entrance to entrance to site before 6am. Will install CCTV cameras at Wellington Road entrance, and increase CCTV numbers at the weighbridge entrance and transport hub providing proper surveillance and identification of vehicle movements. Hanson applied for a Work Authority Variation to allow preloaded trucks to leave the site before 6am. Hanson has committed to implement ongoing permanent continuous 24/7 noise monitoring for this area to assess compliance with EPA night-time noise limits.
DRIVER BEHAVIOUR Concern that truck drivers are not complying with VicRoads regulation.	<ul style="list-style-type: none"> Road Management Act 2004 managed by VicPolice Hanson Driver's Code of Conduct 	From Meeting #2 to the present day, the CRG has sent multiple letters to Minister for Roads, elected government representatives, VicRoads and VicPolice, seeking speed reduction and installation of a flashing warning light to forewarn drivers of the pending red stop light. In September 2019, VicRoads advised that the all-red time at the intersection had been increased 66% from 1.5 seconds to 2.5 seconds. Drivers were banned from entering site if they breach the Hanson Driver's Code of Conduct. Hanson reported to CRG that written support of Council's speed limit reductions request to VicRoads was provided.
MUD/DIRT ON WELLINGTON ROAD Concern that trucks departing Hanson site are depositing excess mud and dirt on Wellington Road.	<ul style="list-style-type: none"> VicRoads Road Maintenance requirements https://www.vicroads.vic.gov.au/traffic-and-road-use/road-network-and-performance/road-maintenance-works 	Hanson concreted truck tarping area and installed wheel wash. A further wheel wash upgrade is being constructed, but as an interim measure two operators with high pressure hoses are employed to remove mud from trucks as required during wet weather. Street sweeper currently operates from Boral, past Wellington Village and on to Taylors Lane from 5:00am to 3:00pm Monday to Friday, and 5:00am to 11:00am on Saturday. An additional street sweeper is called in as required during wet weather.

Attendance at all CRG meetings of an ERR representative, a Knox City Council officer and the Ward Councillor, means all information being provided to CRG members is also being monitored and assessed by authorities.

The information below responds to a number of community concerns that CRG members or community members have raised. Hanson has collated the table below on our behalf, but all the information has been presented at CRG meetings.

Presentations to CRG about all the topics can be found at <https://www.hanson.com.au/about-us/regulatory-information/lysterfield-quarry/>.

COMMUNITY CONCERN	COMPLIANCE REQUIREMENT	MONITORING RESULTS / ACTION UNDERTAKEN
BLASTING Concern that blasting is causing cracking in residential properties.	<p>Mineral Resources (Sustainable Development) Act 1990 and associated regulations.</p> <ul style="list-style-type: none"> WA385 conditions set limits for airblast and ground vibration. WA385 Work Plan outlines operational management process to ensure limits are met, monitored and reported. <p>AIRBLAST</p> <ul style="list-style-type: none"> The existing limit is 120dB (Lin Peak*1) at all times. The limit under the proposed extension will be 115dB (Lin Peak) for 95 per cent of all blasts. *1Lin Peak - Linear Peak: the maximum level of air pressure fluctuation measured in decibels without frequency weighting. <p>GROUND VIBRATION</p> <ul style="list-style-type: none"> The existing limit is 10mm/s (ppv*2) at all times. The limit under the proposed extension will be 5 mm/s (ppv) for 95 per cent of all blasts. *2ppv - Peak Particle Velocity: the instantaneous sum of the velocity vectors (measured in millimetres per second) of the ground movement caused by the passage of vibration from blasting. 	<p>Implemented SMS Blasting Notification Service.</p> <p>Contracted specialist blasting engineer consultant to provide reports on:</p> <ul style="list-style-type: none"> dedicated monitoring equipment at neighbouring locations with results being hand delivered to residents by Hanson. broadier report of long-term blasting impacts on area and properties surrounding quarry. Increased number of monitoring locations. Results of every blast reported to ERR and CRG and published in the CRG meeting minutes available at https://www.hanson.com.au/about-us/regulatory-information/lysterfield-quarry/ CRG is provided with videos of every blast. <p>The report, which was presented to us in April 2019, concluded that, at a maximum 50 quarry blasts per year, fatigue failure may occur after 718 years and that blasting at the quarry will not cause permanent ground displacement or damage to houses in either the short or long term.</p>
DUST	<p>Mineral Resources (Sustainable Development) Act 1990 and Associated Regulations.</p> <ul style="list-style-type: none"> WA385 conditions set limits for off-site dust. WA385 Work Plan outlines operational management process to ensure limits are met, monitored and reported. 	<ul style="list-style-type: none"> Introduction of 50,000 litre water tank that sprays internal roads. Dust suppressant sprayed on stockpiles. Truck tarping area has been concreted. Wheel wash installed and wheel wash upgrade under construction. Installed completely enclosed fixed crushing plant with water and dust suppressants. Driver Code of Conduct requires trucks to use tarpaulin covers. Site rehabilitation commenced early. CRG is provided with a dust report and associated weather conditions at every meeting for each month since previous CRG meeting.
CRG MEMBERSHIP Concern that CRG members are appointed by Hanson and have conflicts of interest.	<p>Earth Resources Regulation: Community Engagement Guidelines for Mining and Mineral Extractions.</p> <ul style="list-style-type: none"> Terms of Reference (ToR) Expression of Interest (Eol) Code of Conduct 	<p>Participation in the Lysterfield Quarry CRG is voluntary and open to any interested person who lives, works or has an interest in the vicinity of the quarry.</p> <p>The ToR clearly outlines the responsibilities of both community members and Hanson. The ToR does not preclude CRG members from speaking to the media, however it does preclude CRG members speaking to the media on behalf of the CRG without prior approval.</p> <p>When a prospective CRG member signs and submits an Eol to join the CRG, they are committing to the responsibilities outlined. All Eols are referred to the CRG for approval. To date, no Eol has been rejected and every person who has applied to become a CRG member has been appointed to the CRG.</p> <p>All CRG members abide by the Code of Conduct to ensure meetings are conducted fairly and all viewpoints are heard.</p> <p>The ToR, Eol and Code of Conduct can be found at https://www.hanson.com.au/about-us/regulatory-information/lysterfield-quarry/</p>

We address your concerns

One of the key objectives of the CRG is to provide community members with the opportunity to engage in dialogue with Hanson and regulators regarding any issues of concern related to the quarry. And we do.

Over the past four years, key issues of community concern such as dust, blasting vibration, driver behaviour and mud on Wellington Road have been discussed, relevant government agencies made aware of the issues, solutions sought and, in most cases, action undertaken. Here are some of our outcomes.

Dust

Community and CRG member complaints about dusty cars, patios, decks and washing, have been repeatedly discussed at CRG meetings.

More importantly, we expressed our concern about the dust including silica which can have severe health impacts.

To respond to our concerns, Hanson has undertaken a number of actions to alleviate the dust issues. In fact, we presented information about how Hanson has been dealing with dust on page 3 of our last newsletter (Lysterfield Quarry Community Reference Group Newsletter Issue #3, January 2020). You can read that at <https://www.hanson.com.au/media/6793/lysterfieldquarrycrgnewsletter3jan2020.pdf>.

However, the most important outcome of our discussions with Hanson was the three month Respirable Crystalline Silica Monitoring program that was undertaken. The result was that no respirable crystalline silica dust was detected during the three month period. The parameters of the monitoring program were agreed with EPA Victoria and further monitoring will take place if the quarry extension is approved.

Hanson's management of dust is not only assessed by Earth Resources Regulation, it is also subject to EPA regulations. EPA assesses Hanson as a Level 1 facility, therefore it is subject to the most rigorous and extensive modelling, monitoring and data reporting requirements.

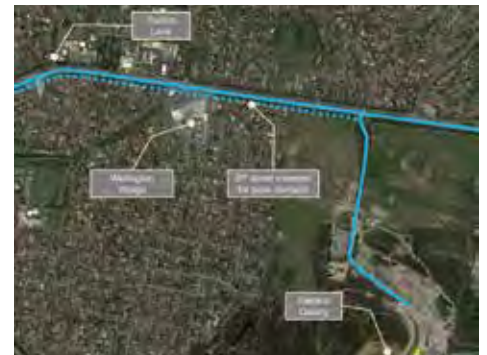
Apart from the health concerns, dust all over our cars and outdoor areas is unpleasant. For some CRG members, this is their key concern – so it is a regular and ongoing discussion with Hanson. With two quarries, ongoing residential development, farm land

activity and a national park surrounding our community, we acknowledge that dust management is difficult to conquer. However, our constant discussions with Hanson have been responsible for a vastly

Hanson's management of dust is not only assessed by Earth Resources Regulation, it is also subject to EPA regulations.

improved dust management process, which includes:

- All internal roads sprayed with water utilising a 50,000 litre capacity, 110 tonne truck which can spray all day, five and a half days per week when required.
- Gluon® dust suppressant, a waterborne polymer emulsion, is sprayed on stockpiles. It creates a wind resistant 'crust'.
- Water and dust suppressants are used in the crushing plant.
- The crushing plant has been completely enclosed.
- The truck tarping area, where drivers are required to cover their loads prior to leaving the quarry, has been concreted.
- Actions to reduce mud, which can dry and turn into dust. See below.
- Hanson has commenced site rehabilitation early, not waiting until the quarry is closed. Indigenous plants are utilised and the topsoil seedbank is retained and used in rehabilitation. Although this work may create some dust, the longer term benefit is a reduction in dust.
- Dust monitoring reports are provided to CRG members at every meeting.



Street sweeper map

Mud

The unprecedented amount of rain we have had this year has caused the dust to become mud. In fact, rainfall data from January to July 2020 was more than the 2019 rainfall total for the area. Rather than covering our newly washed cars in the driveway with dust, our newly washed cars are now being covered in mud from travelling along Wellington Road.

- A wheel wash with rumble strips to remove gravel from tyres has been installed.
- Hanson and other operators have coordinated street sweeping operations along Wellington Road with approximate street sweeper operating times being; Monday to Friday 5:00am to 3:00pm,



and 5:00am to 11:00am on Saturday. Street sweeper times are adjusted to suit weather and road conditions.

- During peak demand period a second street sweeper has also been called in and operators with high pressure hoses remove excess mud from truck mud guards and truck undercarriages.

Increased truck movements

One of the many things we have learned at CRG meetings is Victoria's growing need for quarry products. Even before COVID-19, our economy was strongly linked to the Big Build major infrastructure projects program, delivering \$70b of projects including 119 major road and rail projects.

Hanson has kept the CRG informed of one such Big Build project, the Mordialloc Freeway, which is creating a continuous freeway from Frankston to Clayton by linking the Mornington Peninsula Freeway to the Dingley Bypass. Hanson will provide one third of the 3.6 million tonnes of Type B fill required at the construction site. As this material stream is in addition to the Hornfels and Granite hard rock usually supplied from the Hanson Quarry, there has been a temporary significant increase in the number of trucks using Wellington Road. The increase in truck movements is expected to continue until early in 2021 when the supply of this Type B fill to the Mordialloc Freeway project is completed. Other local quarries in Melbourne's south east are also supporting the project to enable the freeway opening planned for late 2021.

More information available at
<https://roadprojects.vic.gov.au/news/whats-happening-on-the-mordialloc-freeway>



Mordialloc Bypass Type B Fill - bridge mound. Supplied by Major Road Projects Victoria

Over the past two years, some of the projects to which Hanson has delivered product include:

- Mordialloc Freeway Project
- Monash Freeway Stages 1 and 2
- Thompsons Road duplication
- Hallam Road duplication
- Level crossing removals from Frankston to Toorak, Dandenong to Caulfield and out to Pakenham
- Cranbourne rail line upgrade
- Subdivisions in Berwick, Clyde North, Cranbourne, Keysborough, Lyndhurst, Officer and Pakenham
- Council maintenance programs
- HMAS Cerberus
- Warehouses in Dandenong South

Lysterfield Quarry products are also mixed with recycled glass and plastic bottles by the Alex Fraser Group, a member of the Hanson group, to create green roads.
<https://greenroads.com.au/>

Driver behaviour

Driver behaviour on Wellington Road has been discussed regularly at CRG meetings since we began. In fact, we have been active in raising this issue with Hanson, Victorian Government Ministers, MPs, VicRoads and Victoria Police.

Our representations have contributed to:

- Victoria Police conducting a one week blitz in December 2017 on trucks travelling down Wellington Road, with a particular focus on the Wellington Village Shopping Centre intersection. No speeding or red light running was detected during that period.
- VicRoads conducting an audit of traffic from 7:30am to 9:30am on a weekday morning which led to an increase in the 'all red' time by 66%. Meaning that for 2.5 seconds all lights at the intersection are red.



A wheel wash with rumble strips to remove gravel from tyres has been installed.



Mordialloc Freeway Project. Supplied by Hanson.

We address your concerns (cont)

DRIVER MONTHLY DATA

DRIVER: Tom
PERIOD: March, 2019

CONTRIBUTION

Tom contributed 76 deliveries to Hanson Group's business in the month, according to SAP/Trimble.

PRIORITY 1: KEEP OUR PEOPLE SAFE

Safety Goal: No Driver Safety Events

Safety Exceptions Data	Jan	Feb	Mar
Strong acceleration	0	0	0
Strong deceleration	0	0	0
High-G turns	0	0	0

Excellent driver safety statistics were collected during this period. Nothing is so important that we cannot take the time to do it safely.

- Hanson trucks are now fitted with a Trimble® device that records a detailed breakdown for acceleration, deceleration, left and right turns while either loaded or unloaded. The data promotes safety by recording information on the driver's behaviour and providing a monthly driver scorecard.
- Hanson introducing a Driver Code of Conduct which, if not adhered to, results in drivers being banned from the quarry. This applies to every driver that enters the Hanson Quarry, including customers' trucks, contractors and Hanson employees. The date, time, registration and ownership of every truck is recorded as it passes over the Hanson weighbridge.
- Hanson actively encourages community reports of bad driver behaviour. Providing vehicle registration, description of activity and, if possible, a photo or dash-cam footage, enables Hanson to investigate, deal with the issue and report actions back to you.

Also, Cr Darren Pearce's presence at our meetings, and his awareness of the CRG member's and community's feelings about the trucks on Wellington Road, encouraged him to present a Notice of Motion to the Knox City Council (26.07.20) asking VicRoads to install a red light camera, reduce the speed limit and conduct a safety audit to make sure the road can manage the trucks. It was passed unanimously and VicRoads has been asked to provide

a written response to Council and the community.

400m buffer v 500m buffer

When the plans for the quarry extension were first presented to us in November 2018, the buffer zone was much less than the current 400m buffer that had been maintained for the 41 years of Hanson's operation. All CRG members, particularly the quarry's closest resident, objected to this reduction in the buffer and, in March 2019, Hanson advised the CRG that it had returned the buffer zone to 400m.

We are aware that EPA Victoria guidelines* recommend a separation distance of 500m for a quarry that undertakes blasting. However, according to the guidelines, Hanson has undertaken the necessary air quality assessments and monitoring required by EPA. The air emissions from the active quarry were found to be compliant with EPA's applicable air quality criteria. Therefore, these results allow Hanson to maintain the current 400m separation distance to neighbouring residences.

Also, the design of the quarry extension, together with the ongoing rehabilitation, means that the sightlines from all community accessible viewpoints will be of vegetation only.

** EPA Publication 1518, Recommended Separation Distances for Industrial Residual Air Emissions*

Increased blasting

Date Range	Number of Blasting days
2017	45
2018	41
2019	49
Jan – May 2019	33
Jan – May 2020	35

Some community members believe that blasting has increased significantly, and that it has intensified.

But data shows that the number of days Hanson quarry conducts controlled blasting days has remained consistent.

Also during every blast, vibration monitors are placed near homes of a number of concerned residents to monitor blast vibration results. The results, together with videos of every blast undertaken are presented to us at every CRG meeting.

The blast vibration limit imposed by ERR is 10.00mm/s. Blast vibration readings presented to the CRG since we formed in 2016, have not exceeded 3.60mm/s. The average blast vibration reading for January to July 2020 is 1.02mm/s, against a limit of 10.00mm/s. All blasts have been well under half of the Victorian Government regulatory limit.

The design of the quarry extension, together with the ongoing rehabilitation, means that the sightlines from all community accessible viewpoints will be of vegetation only.

Cracks and damage to properties caused by blasting

As Hanson reports all issues raised by, and complaints received from the community at each of our meetings, we are aware of the view that quarry blasting causes cracks and damage to nearby property. We have received several presentations and reports on the blasting process, monitoring and reporting. A video and monitoring report of every blast undertaken since the last meeting are presented at every CRG meeting.

In response to a complaint by a local resident that blasting was causing cracks in their property, Hanson contracted Terrock Consulting Engineers to assess the property and provide a report specifically relevant to their concerns. The assessment was undertaken and the report was delivered to the homeowner in December 2018. The report concluded that "the separation and movement of the concrete slab and cabana at [property address] has been caused by the settlement of fill used to level the property, and movement has been

newsletter

www.hanson.com.au

exacerbated by high moisture levels in the soil below these structures.”

Following further discussions, at our request, Hanson contracted Terrock to provide a report on the potential long-term impacts of blasting on all local properties.

The report, which was presented to us in April 2019, concluded that, at a maximum 50 quarry blasts per year, fatigue failure may occur after **718 years** and that blasting at the quarry will not cause permanent ground displacement or damage to houses in either the short or long term.

While none of us wish to incur property damage as a consequence of actions out of our control, we are confident that Hanson is more than aware of the concerns of the community and is taking every regulatory action, and more, to ensure our properties are not impacted.

We have also heard that some community members have questioned the blast monitoring methodology's compliance with the relevant Australian Standard as required in the regulations. Hanson addressed this in the September 2020 CRG meeting by providing us with a copy of the Terrock Statement of Compliance that was furnished to the Victorian Government regulator, Earth Resources Regulation.

The conclusion of this detailed statement reads “The blast monitoring methods undertaken by Terrock in areas around the Hanson Lysterfield Quarry meets the requirements of Australian Standard AS2187.2-2006, Appendix J.”

When the quarry is closed, what next?

Generally, the first response by a community member in answer to this question is “It will become a landfill.” You can be assured that that will never happen. The Victorian government's waste policy, legislation and Statewide Waste and Resource Recovery Infrastructure Plan would never allow it.

Also, the quarry is subject to a regulated rehabilitation plan. Rather than waiting until the quarry is closed to commence rehabilitation of the site, Hanson undertakes progressive quarry rehabilitation, meaning it is being worked on right now.

Hanson's biodiversity policy also aims to provide habitats for species while sites are operational and into the future.



Replanting at Hanson Lysterfield Quarry

At each meeting, CRG members are updated with the progress of the ongoing rehabilitation plan and have contributed directly to its design. Following the suggestion of a CRG member, a group of Hanson management, staff and fellow CRG members took a walk through the Lysterfield Park. The CRG member led the tour to help Hanson develop a better understanding of

The outcome being that Hanson has now altered its planting design to accommodate a more integrated view of the quarry from the park.

the view of the quarry from the national park. The outcome being that Hanson has now altered its planting design to accommodate a more integrated view of the quarry from the park.

In 2016, Hanson wanted to update the rehabilitation plan for the quarry. The original was approved in 1999 and included high and low density housing, active recreation (including a rollerblading track) and passive recreation linked to the Lysterfield State

Park and Churchill National Park.

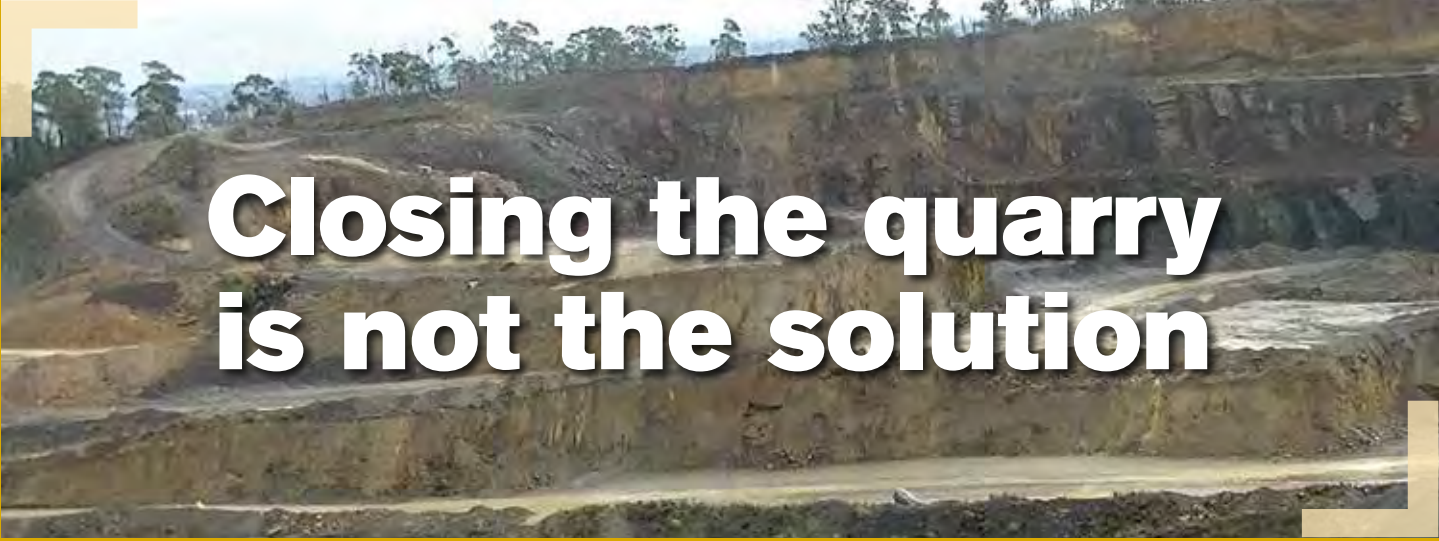
To develop the new plan, a Planning Acquisition Overlay (PAO) applied to the Hanson site had to be removed. Hanson was advised by Parks Victoria that the State Government did not wish to acquire the property and would remove the PAO conditional upon the approval of Knox City Council (KCC).

Following meetings and discussions with KCC officers, including updates at every CRG meeting, Hanson provided a proposal to KCC to support the removal of the PAO. Hanson's proposal concluded that their approval of the State Government's removal of the PAO

could provide KCC with community benefit and the potential for sporting facilities prior to the quarry closure, many years earlier than planned. At their meeting on 28 May 2018, KCC advised they supported the government's removal of the PAO on the condition that the community benefit during the ongoing operation of the quarry through the provision of land and facilities for active recreation and equestrian uses was included in the revised rehabilitation plan. Hanson agreed to this condition.

So even before the quarry is closed, Hanson is working

with KCC, the CRG and the community to open the non-operational areas of the site for community benefit. If we continue engaging with Hanson, the rehabilitated site will ultimately offer us an area of protected indigenous flora and fauna, community access and a 'green' space in a rapidly growing metropolitan area.



Closing the quarry is not the solution

With the introduction of COVID-19 restrictions, Hanson advised us of the potential for increased complaints about the quarry as there would be more people at home during the day and potentially experiencing blasts and quarry activity for the first time.

During the first lockdown, Earth Resources Regulation (ERR) reported that they had received more complaints about the quarry in just a few weeks than they had received annually for all quarries in the Melbourne metropolitan region.

It was recognised that some in the community thought the solution was to close the quarry. But it is neither an option nor a solution.

The most beneficial outcome is for the CRG members and the community to work with Hanson to make sure quarry activity is conducted to best practice standards, and the impact on the community is minimised.

Firstly, the quarry is licenced to operate for many years to come, and the State government is reliant on all metropolitan quarries to provide the necessary product for roads, railway lines, hospitals, schools, industrial and residential developments.

When the quarry does close, blasting will need to be continued to reshape and rehabilitate the land to the required end use

shape. Trucks will continue to travel on Wellington Road as material is removed to other sites and additional is brought in to assist with the reshaping of the land.

Flora and fauna projects, assessments and reporting to regulators must be undertaken and, under the regulatory requirements of the approved Work Plan, Hanson must monitor the site until the site has been fully rehabilitated and the Work Plan conditions are fully met.

So, closing the quarry is not essentially a solution to our concerns. The most beneficial outcome is for the CRG members and the community to work with Hanson to make sure quarry activity is conducted to best practice standards, and the impact on the community is minimised.

Do you have any questions or concerns? Find out more here:

**[https://www.hanson.com.au/about-us/
regulatory-information/lysterfield-quarry/](https://www.hanson.com.au/about-us/regulatory-information/lysterfield-quarry/)**

**To join the CRG or access your membership pack
send an email to: community.vic@hanson.com.au**

