

**Hanson Lysterfield Quarry
Community Reference Group**

MINUTES OF MEETING

Meeting No.:	23	Status of Minutes:	APPROVED
Date:	29 April 2020	Time:	6:00pm
Location:	Online via Microsoft Teams		
Minutes Confirmed:	Confirmed by T Harley and S Orr, carried by consensus		

Chairman:	Brian Oates (BO)
------------------	------------------

Present:

Members:	Alan Birchall (AB) Alice MacKenzie (AM) Sally Orr (SO) Shane Logan (SL) Susan Pearce (SP) Trevor Harley (TH) Virginia Bright (VB) Wendy Belli
Presenters/ Observers:	Bruce Webster, Hanson (BW) Daniel Fyfe, Hanson (DF) Cr Darren Pearce (DP) Garrett Hall, Golder, Hanson consultant (GH) Geoff Gilbert, ERR (GG) Paul Dickie, KCC (PD) Rob Francis, Hanson (RF) Lyndel Hunter, LHSC, Hanson consultant (LH)

Item	Issue
1	Welcome Apologies received from: Monica Varcoe (unable to connect internet) Paul Lees Absent: Clayton Collins Darren Heathcote
2	Minutes of previous meeting Minutes of Meeting 22 were approved by TH and SL and carried unanimously. Action Tracker Issue: <i>HeidelbergCement (Hanson parent company) sustainability credentials to be presented at next meeting.</i> To be presented in Item 4.

3 Presentation: Project Update

Rob Francis, Hanson

Garrett Hall, Golder

(Refer to ATTACHMENT A)

RF outlined the impacts of COVID-19 on Hanson and the protections Hanson has in place to protect employees, contractors and the community.

- Safe work methods have been updated in line with Government guidance at quarries, in trucks and at customer sites.
- All community meetings have been suspended with the exception of Lysterfield CRG which is being conducted online via Microsoft Teams
- The quarry extension application will continue
- The earthworks in the north east corner of the site will continue
- Quarry volumes are steady at present
- The outlook for demand is uncertain relevant to product supply for road, rail, housing, apartments, offices, etc.

RF advised that the application process for the quarry extension has not changed since the previous meeting and that the process continues.

RF reiterated the key points of the application which include:

- The 400 metre buffer being maintained
- An increase in the depth of the quarry to 15 metres
- The rate of extraction and operating hours are both unchanged
- Rehabilitation of the site will include a lake and developable area suitable for a range of equestrian, commercial, residential or community outcomes.

RF reported that there has been no change to the Overburden Earthworks Application since the previous meeting and that Hanson is still to submit the required documentation that meet all Permit conditions issued on 31 December 2019, including:

- Works must commence within two years and be completed within four years
- Geotechnical specifications and engineering plans are required
- Construction Environmental Management Plan (CEMP) is required
- Construction times limited to:
 - Monday to Friday: 7:00am to 4:00pm
 - Saturday: 7:00am –1.00pm
 - No Sunday or Public Holiday works
- Trucks must not enter or exit the site via Wellington Road
- Trucks must only use the internal haul road to access the development site
- Only fill material sourced from the existing quarry may be used
- Site management are required to anticipate adverse operating conditions such as weather
- Dust management must be undertaken at all times
- Storm water and drainage management, bio retention systems and vegetated swales must be established and maintained
- There is to be no discharge of sediment-laden runoff beyond the boundary
- No fill is to be placed beyond the areas as shown on the endorsed plans
 - Site fencing must be constructed
 - A Survey Plan by a qualified licensed surveyor must be provided upon completion
 - A Completion Report must be prepared by a qualified geotechnical Engineer and provided.

	<p>RF advised that the Vegetation and Offsets information had not changed since the previous meeting and reiterated the Permit conditions issued on 31 December 2019, including:</p> <ul style="list-style-type: none"> · Tree protection zones and structural root zones · Tree protection fencing · Removal of noxious weeds · Re-location of dead trees to create hollows/habitat for fauna · At least 70 additional indigenous canopy trees, including: <ul style="list-style-type: none"> – 40 Yellow Box and 30 Long Leaf Box · 0.790 hectares of native vegetation to be removed totals, comprised of: <ul style="list-style-type: none"> – 3 patches of native vegetation – 7 large scattered trees – 18 small scattered trees · The permit holder must secure general offset of 0.186 general habitat units with a minimum strategic biodiversity score of at least 0.430, and the offset(s) secured must also protect 7 large trees. · A suitably qualified wildlife handler or zoologist is to be present when felling trees/removing native vegetation, to ensure affected wildlife is not harmed. <p>RF reported that the Growling Grass Frog survey field work had been undertaken and the report was being prepared.</p>
4	<p>Presentation: Hanson updates <i>Rob Francis, Hanson</i> Sustainability Snap Shot: <i>(Refer to ATTACHMENT B)</i></p> <p>Information relevant to HC sustainability credentials requested at previous meeting</p> <p>RF responded to the issues raised at CRG Meeting #22 following the announcement of CDP's (formerly Carbon Disclosure Project) recognition of HeidelbergCement (HC) as one of the leading companies worldwide for its commitment to climate action.</p> <p>RF advised that, to achieve this recognition, HC is required to provide full disclosure of carbon emissions. This can be accessed by the public at https://www.cdp.net/en/companies/companies-scores.</p> <p>RF encouraged CRG members to view the HC Sustainability Report at https://www.heidelbergcement.com/en/sustainability-reports.</p> <p>RF reported that the HC Sustainability Commitments 2030 program is aligned with the United Nations' Sustainable Development Goals, which can be viewed at https://sustainabledevelopment.un.org.</p> <p>The HC Sustainability Commitments 2030 (which can be viewed at https://www.heidelbergcement.com/en/sustainability-commitments-2030 offer the following:</p> <ul style="list-style-type: none"> · CO2-neutral concrete by 2050 at the latest · 30% is the targeted reduction in CO2 emissions by 2030 compared with 1990 · Invest 80% of our research and development budget in the development of sustainable products · Science Based Targets initiative (SBTi) verify that our CO2 reduction targets for 2030 conform to the requirements of the Paris Agreement. Further information can be viewed at https://sciencebasedtargets.org (search HeidelbergCement) · The principles outlined in the Sustainability Commitments 2030 are: <ul style="list-style-type: none"> – Driving economic strength and innovation

	<ul style="list-style-type: none"> - Achieving excellence in occupational health and safety - Reducing our ecological footprint - Enabling the circular economy - Being a good neighbour - Ensuring compliance and creating transparency <p>HC Sustainability News can be viewed at https://www.heidelbergcement.com/en/sustainability-news</p> <p>HC sustainability initiatives include:</p> <ul style="list-style-type: none"> · Global partnership with BirdLife International, with further opportunities for Lysterfield · Enhancing pollinators · Rescue bee hives located at Hanson Wollert Quarry in the northern suburbs · Safety Week · Internal Hanson program · Carbon neutral fuels research in UK · Full-scale carbon capture and storage (CCS) in Canada · Building homes for wildlife in the Czech Republic · Promotion of Sustainable Land Use in Tanzania <p>RF presented a video on CDP which can be viewed at https://www.cdp.net/en/companies</p> <p>Following the presentation, TH stated that concrete is a huge carbon emitter and that to be carbon neutral by 2050 is a huge goal. TH queried whether the goal would be achieved by offsets or by science.</p> <p>DF advised that Hanson was assessing and utilising solar energy and renewables at many of its sites, and were undertaking flora and fauna projects such as the rescue bees program and the Swift Parrot Migration Path program.</p>
5	<p>Communication and Consultation</p> <p><i>All CRG members</i></p> <p>WB reported that the Quarry Bothers Me Facebook group appears to have become more active and, again, is distributing misinformation.</p> <p>DP reported that he had had a community member on the telephone for 25 minutes during which he provided information.</p> <p>RF reported that he had had discussions with the same person, providing responses to statements made and questions posed.</p> <p>GG reported that he was working with Kim Wells' advisor providing information to be delivered to community members who have contacted the parliamentarian.</p> <p>TH suggested that all community members who make enquiries of the quarry should be provided with all available information and invited to join the CRG which would allow them to get all the information and raise all their issues.</p> <p>A discussion relevant to future conduct of meetings resolved:</p> <ul style="list-style-type: none"> · CRG meetings will continue online via Microsoft Teams until COVID-19 restrictions allow for face-to-face meetings · Future CRG meetings may benefit from a combination of face-to-face meetings and participation through Microsoft Teams · Agreed that next meeting should be conducted via Microsoft Teams and further decision to be made following Victorian Government announcement expected on 11 May 2020.

6

Other Business

6.a Operational Report

Bruce Webster, Quarry Manager

(refer to **ATTACHMENT C**)

BW provided dust data for January and February 2020. Slight increases were noted in January at dust monitors located on the Boral boundary and at Weather Street. However, a dust storm from the Western Plains may have been the source of this dust and, during this period, the wind was from the south. Dust readings at Montague Crescent have been low.

It was noted that rainfall data indicates rainfall significantly above average in 2020. In fact, rainfall data from January to April equals the 2019 rainfall total for the area. The following observations were provided:

- December 2019, 1/10th of average
- January 2020, 260% of average
- February 2020, 650% of average
- 21 January 2020, 'dirty rain' fell across Melbourne
- The rainfall has impacted quarry projects causing delays in delivery.

Blast monitoring results for the nine (9) blasts conducted since the last CRG meeting were provided indicating that measurements of vibration and air blast were well within regulatory limits.

TH commented that vibration from blast on 24 April 202 was more impactful.

SL reported a massive blast undertaken by Boral.

AB advised that his family had reported the blast impacts.

BW queried if community members were receiving any blasting information from Boral.

RF advised that Boral has an SMS notification service similar to Hanson.

BW commented that he understood the shock some community members would have hearing the blasts for the first time. He advised that providing an SMS blast notification service is the least Hanson can do.

WB reported that an unmarked truck had lost a load of stones on Raeburn Drive and that they cleared the road by hand. BW advised that Hanson had no reports from drivers regarding this situation.

BW provided video of all blasts undertaken since last CRG meeting, indicating that blasts were to the east, away from TH property.

BW advised that several community member complaints had been received, including:

- 24 February 2020 at 8:05am. A resident reported a traffic use via SMS providing a photo of the vehicle. A truck had blocked the intersection of Wellington Road and Braeburn Parade when the lights changed. This precluded local traffic from crossing the intersection. Hanson checked the company name and vehicle registration number against Hanson weighbridge records and identified that the truck had not been at Hanson.
- 23 April 2020. A resident from Heany Park Road raised concerns about lasting and effects of vibration on houses. Due to COVID-19 protocols, a meeting did not go ahead. A video conference meeting was offered, but declined. Information was emailed to the resident, together with an invitation to attend a CRG meeting.
- 20 February 2020. A report of a truck still releasing dust and dirt from under carriage at the Clausen Drive and Wellington Road intersection. Due to a technical issue, the SMS was not read until 16 March 2020 and it was not feasible to investigate with the operators concerned.

	<p>The technical issue has been resolved and Hanson has apologised to the resident who reported the issue.</p> <p>BW reiterated that the preferred method of reporting is via email:</p> <ul style="list-style-type: none"> · community.vic@hanson.com.au · bruce.webster@hanson.com.au · robert.francis@hanson.com.au <p>BW reported the installation of a closed circuit remote control camera, with the controls in his office. It is operated from a solar power camera tower located 500 metres from the Quarry Manager's office and improves safety and efficiency of the quarry.</p> <p>BW advised that concrete blocks, recycled from returned and unused concrete is being formed into blocks and utilised to improve on site traffic management.</p> <p>BW provided images of rehabilitation of the eastern face of the quarry from several vantage points and demonstrating growth of plants.</p> <p>6.b Questions and Answers</p> <p>PD reported that rainfall in the area has been outstanding and, if the rain continues, soil moisture will cause cracking in local residences. He advised that BW and RF should be aware of this as it has the potential to become a community issues. Subsidence is a consequence of an unusually wet season.</p> <p>PD advised that he had attended the Boral community meeting on behalf of Knox City Council. He noted that the meeting was conducted in a different style to Hanson and that he understood Boral's intention to be to continue with these meetings.</p>
--	--

Meeting Closed:	7:25pm
Next Meeting:	Meeting 24 Wednesday 24 June 2020 at 6:00pm via Microsoft Teams

ACTION SUMMARY

Item	Issue	Action	By



Project Update

Lysterfield Quarry Community Reference Group

April 29th 2020





Current Quarry Projects

1. COVID19 Impacts
2. Quarry Extension
3. Overburden Placement

COVID19 Impacts

1. Measures aimed at keeping people safe

- Updated safe work methods in line with Government guidance
 - At quarry
 - In trucks
 - At customer sites

2. Community Meetings

- Lysterfield CRG continues online

3. Quarry extension application

- Continues

4. North east corner earthworks

- Continues

5. Quarry volumes

- Steady at present

6. Demand outlook

- Uncertainty
- Road, rail, housing, apartments, offices, etc

Application Process for Quarry Extension

Earth Resources Regulation (ERR)

Victorian Government Department of Jobs, Precincts and Regions. (DJPR)

ERR Application Progress:

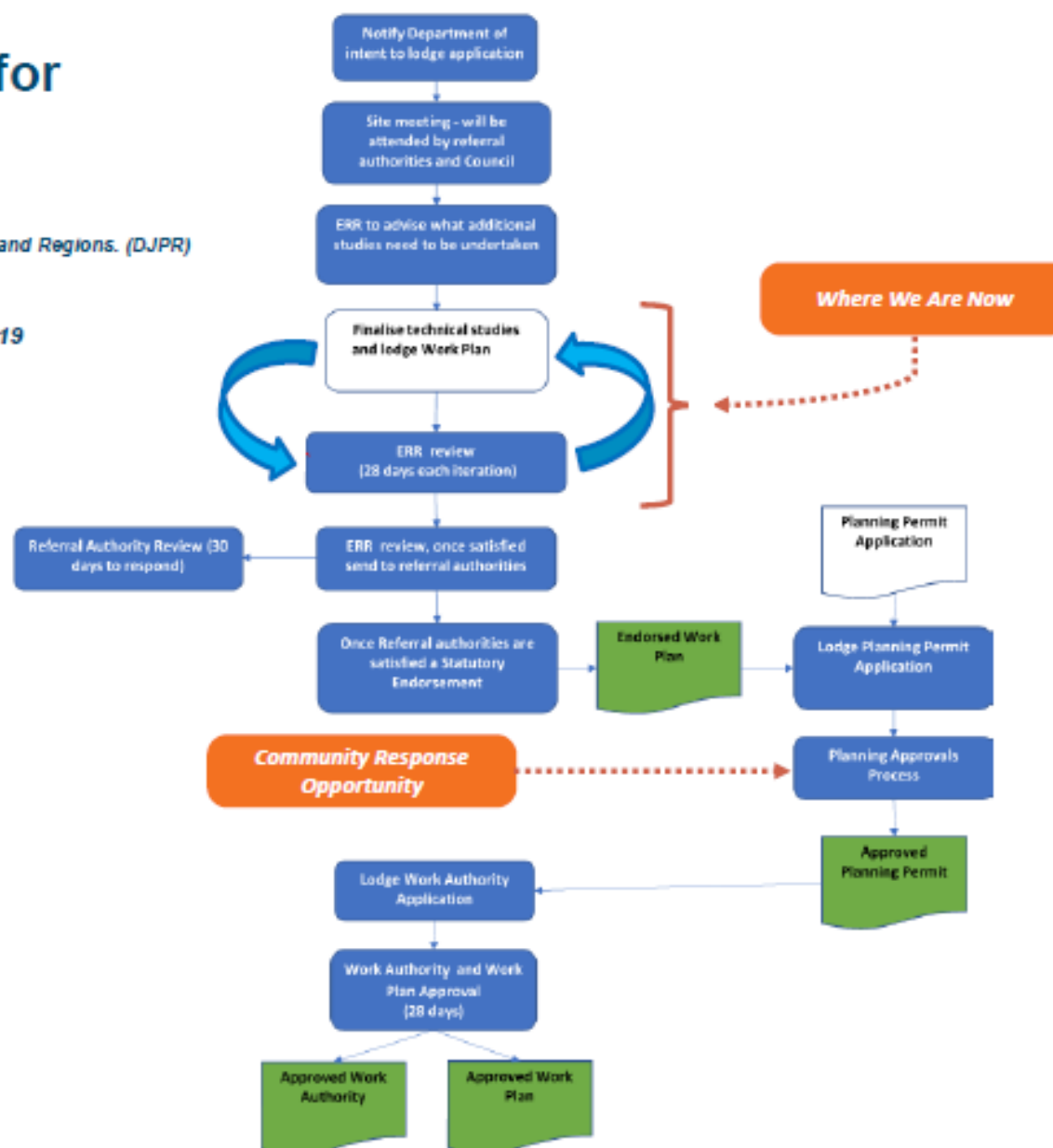
- Hanson lodged application 19th December 2019
- ERR responded 17th January 2020
- Amendment process underway
- Hanson will submit revision

Knox City Council

Referral Authorities:

- Aboriginal Victoria (Victorian Government)
- Country Fire Authority (CFA)
- Department of Environment, Land, Water & Planning (DELWP)
- Environment Protection Authority Victoria (EPA)
- Melbourne Water
- Parks Victoria
- Southern Rural Water
- VicRoads

No change since previous meeting.



Application Key Points

- 400 metre buffer maintained
- Increase depth by 15 metres
- Rate of extraction unchanged
- Operating hours unchanged
- Rehabilitation to include a lake and developable area suitable for a range of equestrian, commercial, residential or community outcomes.

*No change since
previous meeting.*

2. Overburden Placement & Potential Future Sports Grounds

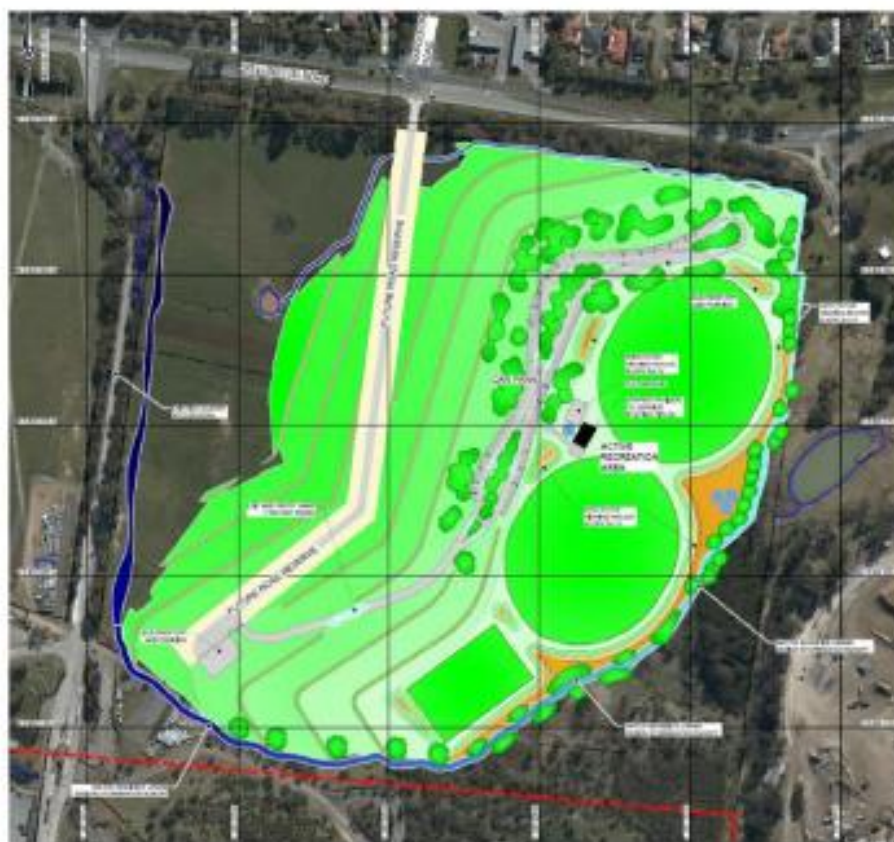


Plate 3: Potential Future Land Use

Overburden Earthworks Application

- ✓ Prefill Design
- ✓ Lodge Planning Permit
- ✓ Arborist Study
 - Fill placement plan adjusted to avoid trees where possible
 - 7 large trees to be removed
 - Vegetation off sets required
- ✓ Permit Public Display
- ✓ Community Submissions
- ✓ DELWP referrals
- ✓ Council assessment
- ✓ Council decision to grant permit, unless appealed by 24/12/19
- ✓ Permit issued with strict conditions on 31/12/19
- Hanson to submit required documentation and met conditions
- Equestrian Relocation Plan
- Equestrian Relocation
- Vegetation Offsets purchased by Hanson
- Fill and machinery availability
- Commencement of Prefilling

Current Phase
in Process

No change since
previous meeting.



Overburden Earthworks Permit

Permit issued with strict conditions on 31/12/19:

- Commence works within 2 years and complete works within 4 years
- Geotechnical specifications & engineering plans
- Construction Environmental Management Plan (CEMP)
- Construction times limited to:
 - Monday to Friday: 7.00 am – 4.00 pm,
 - Saturday: 7.00 am – 1.00 pm,
 - No Sunday & Public Holiday works
- Trucks must not enter or exit the site via Wellington Road
- Trucks must only use the internal haul road to access the development site
- Only fill material sourced from the existing quarry may be used
- Site management to anticipate adverse operating conditions (weather)
- Dust management at all times
- Storm water & drainage management, bioretention systems and vegetated swales
- No discharge of sediment-laden runoff beyond the boundary
- No fill is to be placed beyond the areas as shown on the endorsed plans
- Construction site fencing
- Survey Plan by a qualified licensed surveyor upon completion
- Completion Report prepared by a qualified geotechnical Engineer

*No change since
previous meeting.*

Overburden Earthworks Permit

Vegetation & Offsets

- Tree protection zones & structural root zones
- Tree protection fencing
- Noxious weed removal
- Re-location of dead trees to create hollows/habitat for fauna
- At least 70 additional indigenous canopy trees
 - 40 Yellow Box and 30 Long Leaf Box.
- 0.790 hectares of native vegetation to be removed totals, comprised of:
 - 3 patches of native vegetation
 - 7 large scattered trees
 - 18 small scattered trees
- The permit holder must secure general offset of 0.186 general habitat units with a minimum strategic biodiversity score of at least 0.430, and the offset(s) secured must also protect 7 large trees.
- A suitably qualified wildlife handler or zoologist is to be present when felling trees/removing native vegetation, to ensure affected wildlife is not harmed.

*No change since
previous meeting.*



Overburden Earthworks Permit

Growling Grass Frog Survey

- Field work conducted
- Report undwe way



Questions?



Bruce Webster

*Lysterfield Quarry Manager,
Hanson*

P: 03 9274 3700

M: 0428 450 394

E: bruce.webster@hanson.com.au



Rob Francis

*Project Development Manager,
Hanson*

P: 03 9274 3700

M: 0407 530 262

E: robert.francis@hanson.com.au

Sustainability Snap Shot

Lysterfield Quarry CRG Meeting

April 29th 2020





In top 3% for climate protection commitment

20 January 2020

HeidelbergCement receives “A” rating for commitment to climate protection

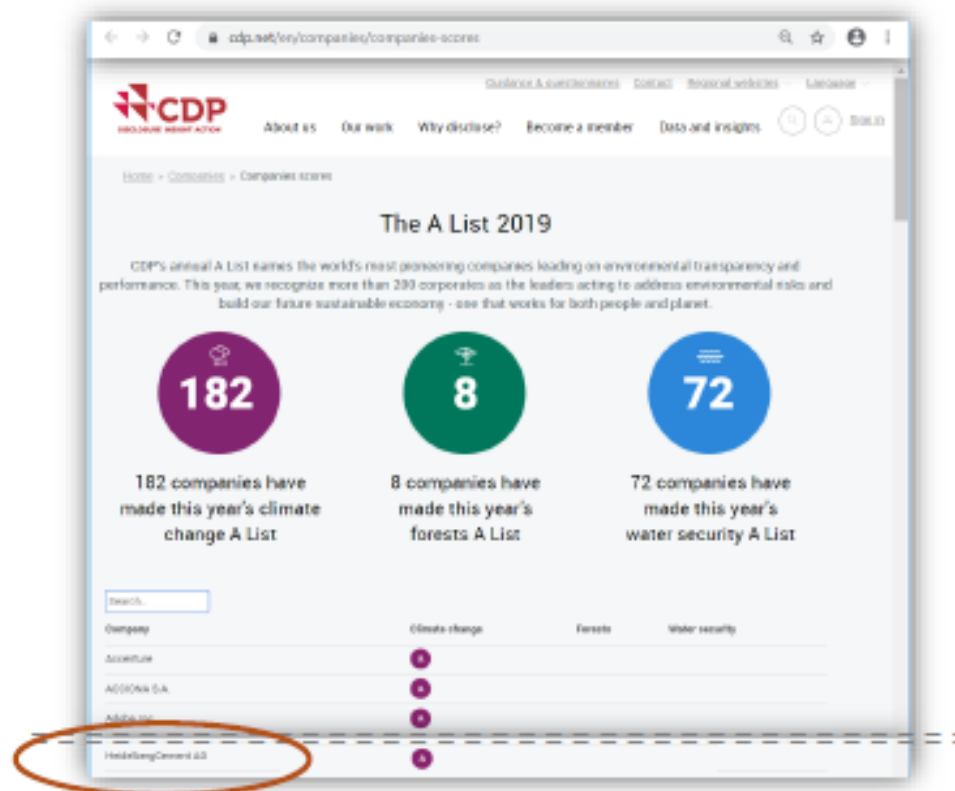
The international non-profit organisation CDP (formerly Carbon Disclosure Project) has recognised HeidelbergCement with a place on the "Climate Change A-List 2019" as one of the leading companies worldwide for its commitment to climate action. HeidelbergCement has improved its rating in the area of climate protection from A- in the previous year to the top grade A, and thus remains leading in the cement sector. In 2019, around 8,000 companies disclosed data to CDP. Of these, only 179 companies worldwide, thereof 9 in Germany, were awarded the top grade A.

„We are proud that we could further improve HeidelbergCement’s leading position from previous years and achieve a solid A rating on the CDP climate list. After our ambitious CO2 reduction targets were approved by the Science Based Targets initiative (SBTi) in 2019, this prime rating once again demonstrates that HeidelbergCement is on the right track in terms of climate action”, says Dr. Bernd Scheifele, Chairman of the Managing Board of HeidelbergCement. “Cutting our CO2 emissions and handling natural resources considerably are priorities for all our business lines.”

CDP is considered one of the most important sustainability ratings for investors. It assesses performance, transparency and proven management best practices from companies in the fields of climate change and protection of water and forests, allocating scores of A to D-. Goal of the CDP rating is to promote competition in the area of sustainability and encourage companies to set ambitious environmental protection targets. The companies on the CDP Climate Change A List are considered to be leaders because of their transparent and comprehensive disclosure of climate data, thorough awareness of climate risks, demonstration of strong governance and management of those risks, as well as their demonstration of market-leading best practices.

CDP Company Scores

<https://www.cdp.net/en/companies/companies-scores>



Full disclosure of carbon emissions required

HC Sustainability Report

- View the HeidelbergCement (HC) Sustainability Report at...
 - <https://www.heidelbergcement.com/en/sustainability-reports>
- Key Points
 - HC Sustainability Commitments 2030 are aligned with the United Nations' Sustainable Development Goals. <https://sustainabledevelopment.un.org>
 - Our vision is to offer a CO₂-neutral concrete by 2050 at the latest.
 - 30% is our targeted reduction in CO₂ emissions by 2030 compared with 1990.
 - By 2030, we will invest 80% of our research and development budget in the development of sustainable products.
 - Science Based Targets initiative (SBTi) verify that our CO₂ reduction targets for 2030 conform to the requirements of the Paris Agreement. <https://sciencebasedtargets.org> (search HeidelbergCement)
 - The principles outlined in the Sustainability Commitments 2030 are:
 - *Driving economic strength and innovation*
 - *Achieving excellence in occupational health and safety*
 - *Reducing our ecological footprint*
 - *Enabling the circular economy*
 - *Being a good neighbour*
 - *Ensuring compliance and creating transparency*
 - <https://www.heidelbergcement.com/en/sustainability-commitments-2030>





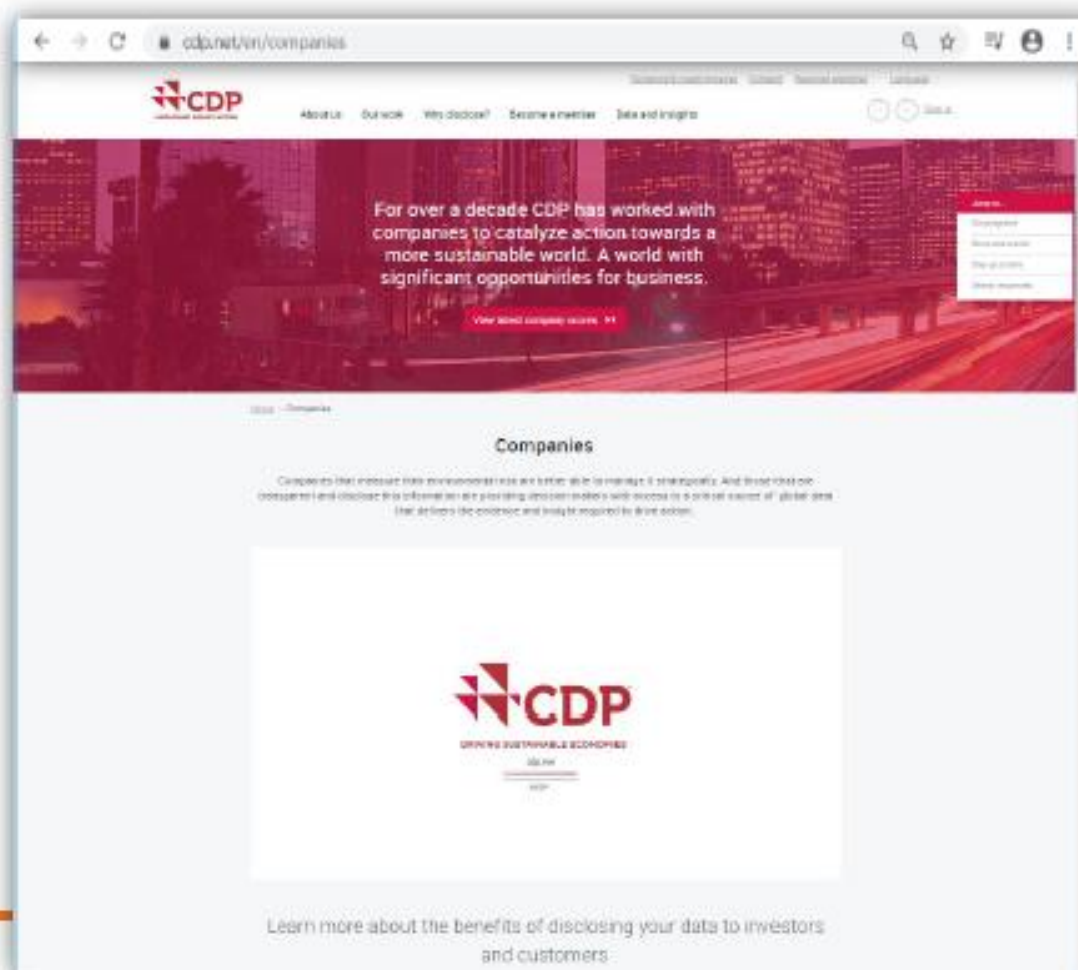
HC Sustainability News

- View the HeidelbergCement (HC) Sustainability News at...
 - <https://www.heidelbergcement.com/en/sustainability-news>
- Initiatives include:
 - Global partnership with BirdLife International
 - Opportunities for Lysterfield
 - Enhancing pollinators
 - Includes bee hives at Hanson Wollert (Northern suburbs)
 - Safety Week
 - Internal Hanson program
 - Carbon neutral fuels research in UK
 - Full-scale carbon capture and storage (CCS) in Canada
 - Building homes for wildlife. Czech Republic
 - Promotion of Sustainable Land Use, Tanzania

What is CDP?

<https://www.cdp.net/en/companies>

Video...



Questions?



Rob Francis

*Project Development Manager,
Hanson*

P: 03 9274 3700

M: 0407 530 262

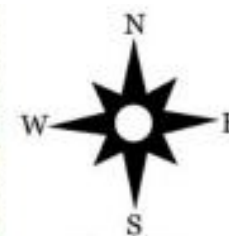
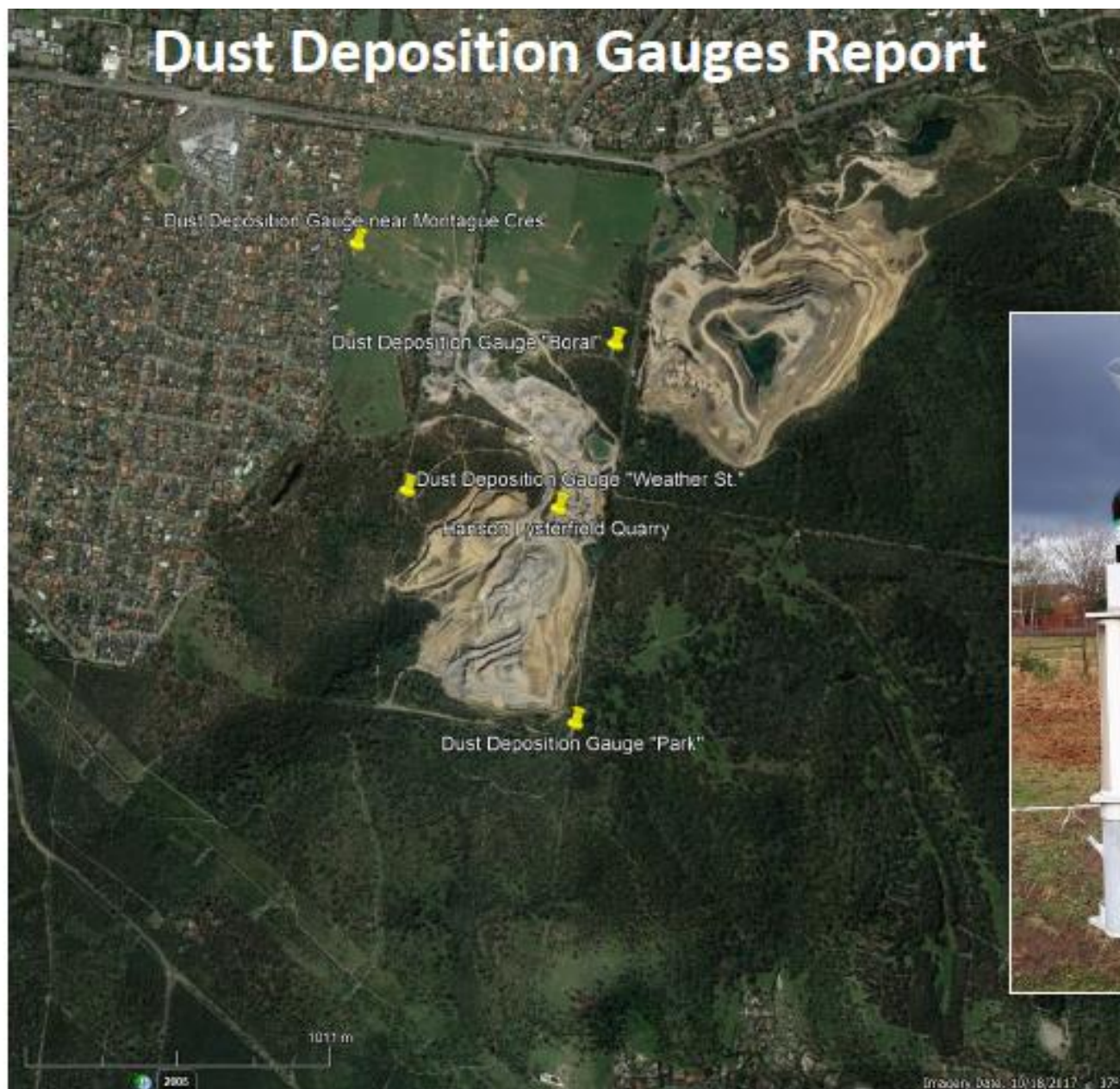
E: robert.francis@hanson.com.au



Operational Report

Lysterfield Quarry

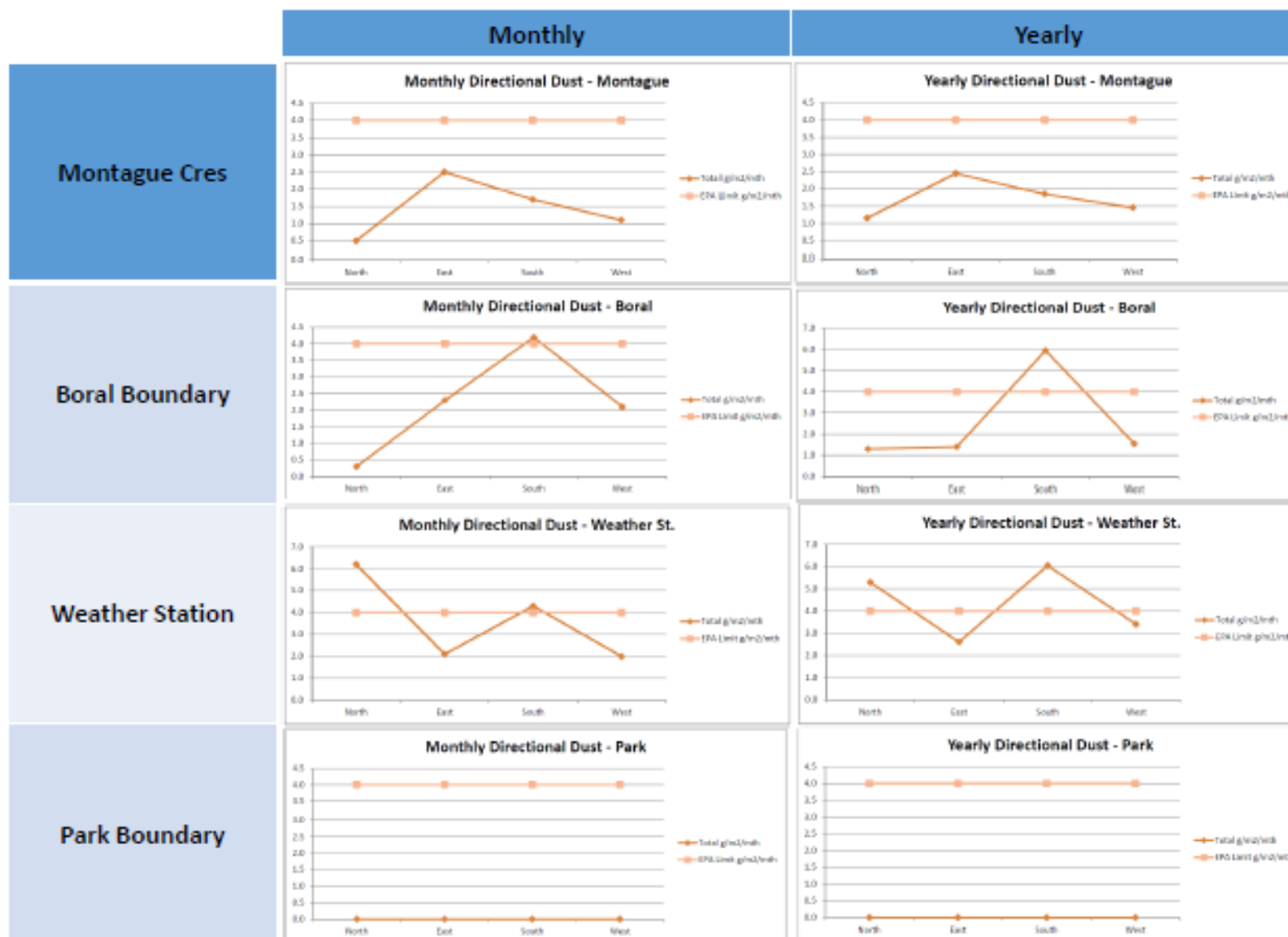
April 29th 2020



Dust Data – January 2020



Dust Data – February 2020

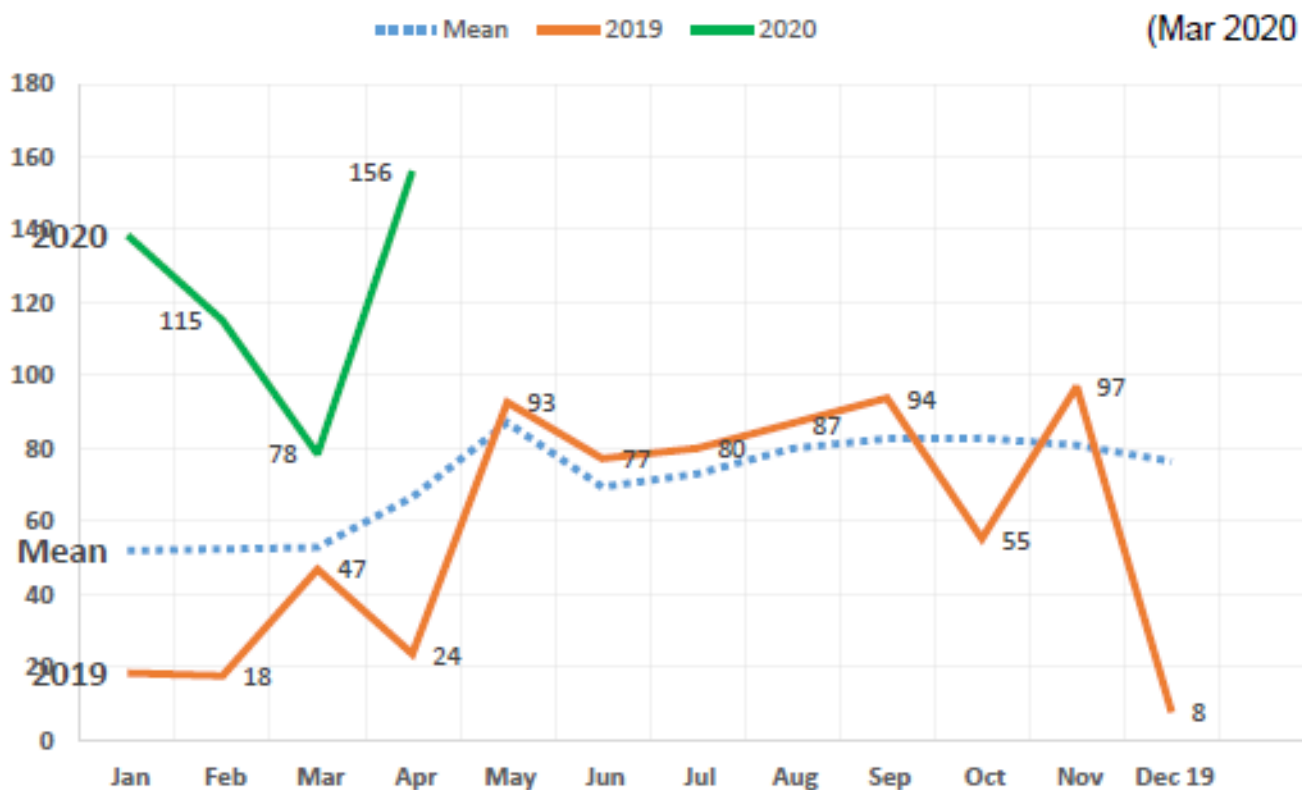


Rainfall Data

http://www.bom.gov.au/jsp/ncc/cdio/weatherData/av?p_nccObsCode=136&p_display_type=dailyDataFile&p_startYear=&p_c=&p_stn_num=086104

TOTAL VS MEAN RAINFALL SCORES BY

(Mar 2020 as at 26/4/20)



Statistic	Jan	Feb	Mar	Apr	May	Jun	Jul	Aug	Sep	Oct	Nov	Dec
Mean	51.9	52.3	52.8	66.6	87.1	69.4	73.0	79.9	82.6	82.8	80.8	76.4
Median	50.8	39.2	46.0	62.6	83.1	64.6	71.2	82.4	78.6	77.8	72.5	73.7

Comments, Observations & Photos

- Wind & weather
 - Rainfall significantly above average in 2020
 - December 1/10th of average
 - January 260% of average
 - February 650% of average
 - Jan 21st “dirty rain” falls across Melbourne
- Comments...
 - Dust readings at Montague Cres low.



Blast Monitoring Results 2019

SHOT no.	Comments	40 Pitfield Crescent [TERROCK]		38 Heany Park Road [TERROCK]		15 Sandford Close [TERROCK]		6 Parkview Terrace [TERROCK]		7 forster hill grove	
	Date	VIBRATION mm/s	AIR BLAST dba	VIBRATION mm/s	AIR BLAST dba	VIBRATION mm/s	AIR BLAST dba	VIBRATION mm/s	AIR BLAST dba	VIBRATION mm/s	AIR BLAST dba
1843	14-Jan-19	0.32	88.34			1.16	99.35	0.27	95.08		
1839	cancelled										
1901	22-Jan-19	0.22	91.27			1.13	96.62	0.26	86.34		
1902	1-Feb-19	0.27	98.06			1.46	104.53	0.3	92.40		
1903	6-Feb-19	0.16	91.7			0.9	99.96	0.32	97.44		
1904	18-Feb-19	0.21	96.18			0.15	92.23	0.21	96.22		
1905	26-Feb-19	0.36	96.22			1.38	99.85	0.31	101.29		
1906	7-Mar-19	0.35	96.85			1.88	101.69	0.48	92.98		
1907	7-Mar-19	0.17	92.61			0.75	100.57	0.17	91.56		
1908	18-Mar-19	0.29	96.93			1.17	105.43	0.32	95.08		
1909	25-Mar-19	0.18	94.89			0.84	98.38	0.27	106.86		
1910	1-Apr-19	0.24	101.90			1.55	101.90	0.24	91.90		
1911	3-Apr-19	0.56	98.12			1.57	98.88	0.56	98.76		
1912	9-Apr-19	0.24	96.14			1.23	104.96	0.24	100.91		
1913	9-Apr-19	0.24	96.14			1.23	104.96	0.24	100.91		
1914	17-Apr-19	0.24	88.38			0.72	102.56	0.39	101.24		
1915	23-Apr-19	0.31	98.76			0.75	106.81	0.37	96.62		
1916	29-Apr-19	0.58	92.74			1.21	95.88	0.38	98.38		
1917	1-May-19	0.29	89.15			1.61	96.22	0.31	96.62		
1918	8-May-19	0.32	96.05			1.78	96.05	0.5	95.8		
1919	15-May-19	0.28	95.08			1.28	98.57	0.22	96.22		
1920	22-May-19	0.31	92.74			1.14	96.14	0.56	105.37	0.73	108.43
1921	3-Jun-19	0.31	105.05			1.59	107.86	0.38	88.97		
1922	14-Jun-19	0.35	96.7			1.53	97.3	0.33	97.51		
1923	25-Jun-19	0.46	89.15			1.01	96.93	0.37	106.21		
1924	1-Jul-19	0.21	101.24			1.1	99.52	0.17	107.44		
1925	10-Jul-19	0.4	91.7			1.36	102.72	0.41	106.37		
1926	23-Jul-19	0.53	95.54			2.2	98.76	0.37	99.46		
1927	9-Aug-19	0.4	95.62			1.22	97.15	0.37	111.19		
1928	30-Jul-19	0.51	99.9			1.18	104.01	0.38	104.24		
1929	2-Aug-19	0.35	94.5			0.82	94.8	0.17	94.5		
1930	14-Aug-19	0.25	94.88			1.29	100.22	0.35	97.79		
1931	22-Aug-19	0.31	93.44			0.61	95.97	0.16	100.47		
1932	28-Aug-19	0.37	97.97			1.04	96.85	0.3	91.97		
1933	2-Sep-19	0.37	91.97			1.04	96.85	0.3	98.82		
1934	11-Sep-19	0.27	91.97			0.89	97.86	0.3	96.7		
1935	20-Sep-19	0.49	95.62			1.66	99.63	0.48	103.34		
1936	25-Sep-19	0.32	102.52			2.05	103.32	0.46	95.17		
1937	4-Oct-19	0.62	103.21			2.15	103.21	0.29	100.17		
1938	1-Nov-19	0.19	92.23			0.69	97.51	0.17	97		
1939	18-Oct-19	0.42	96.38			1.15	100.32	0.39	103.94		
1940	23-Oct-19	0.27	93.77			1.35	98.63	0.29	94.99		
1941	28-Oct-19	0.25	91.7			1.16	97.85	0.24	107.92		
1942	6-Nov-19	0.3	92.47			1.52	101.95	0.42	99.41		
1943	15-Nov-19	0.15	87.31			0.93	93.77	0.21	98.25		
1944	20-Nov-19	0.37	98.57			1.35	103.81	0.29	98.94		
1945	29-Nov-19	0.24	94.4			0.88	100.3	did not trigger	did not trigger		
1946	4-Dec-19	0.24	94.4			0.88	100.27	0.15	99.41		
1947	10-Dec-19	0.25	97.15			1.26	98.06	0.25	90.98		
1948	18-Dec-19	0.26	89.86			1.21	96.62	0.29	92.61		

Limits: Vibration 10.00 mm/s. Air Blast 120.00 dba

Blast Monitoring Results 2020

SHOT no.	Comments	40 Pitfield Crescent [TERROCK]		15 Sandford Close [TERROCK]		6 Parkview Terrace [TERROCK]		7 forster hill grove	
	Date	VIBRATION mm/s	AIR BLAST dba	VIBRATION mm/s	AIR BLAST dba	VIBRATION mm/s	AIR BLAST dba	VIBRATION mm/s	AIR BLAST dba
2001	10.01.2020	0.29	93.44	1.64	100.57	0.46	108.28		
2002	15.01.2020	0.29	86.59	1.38	94.09	0.48	92.61		
2003	24.01.2020	0.46	89.86	1.12	97.44	0.46	97.86		
2004	29.01.2020	0.36	93.33	1.71	97.65	0.31	102.36		
2005	12.02.2020	0.26	95.08	1.18	100.67	0.34	93.21		
2006	06.02.2020	0.32	92.23	1.55	102.36	0.26	97.58		
2007	12.02.2020	0.26	95.08	1.18	100.67	0.34	93.21		
2008	21.02.2020	0.38	96.77	1.53	98.12	0.29	88.58		
2009	26.02.2020	0.36	103.57	1.62	106.62	0.74	106.72		
2010	06.03.2020	0.3	93.21	1.65	100.57	0.28	98.76		
2011	11.03.2020	0.25	92.36	1.13	99.41	0.34	93.99		
2012	19.03.2020	0.27	90.98	0.76	100.67	0.27	104.53		
2013	25.03.2020	0.26	101.38	1.53	101.82	0.43	93.88		
2014	03.04.2020	0.46	94.7	1.9	102.4	0.31	106.42		
2015	14.04.2020	0.3	87.31	0.95	99.35	0.3	101.95		
2016	20.04.2020	0.38	94.3	1.76	100.62	0.31	102.07		
2017	24.04.2020	0.5	96.62	1.59	96.85	0.3	97.22		

Limits: Vibration 10.00 mm/s. Air Blast 120.00 dba

Complaints

24th Feb 2020 8:05am

- A resident reported a traffic issue via SMS.
- Photo provided.
- A truck blocked the intersection of Wellington Rd and Braeburn Pde (Wellington Village) when the lights changed.
- Local traffic couldn't cross the intersection.
- BTS Bulk Transport Solutions registration number YV 89AG
- Hanson checked weighbridge records
- This truck has never been through Hanson's weighbridge.

Preferred method of reporting is email:

- robert.francis@hanson.com.au
- bruce.webster@hanson.com.au
- community.vic@hanson.com.au



Complaints

23/4/2020.

A resident from Heany Park Rd raised concerns about blasting and effects of vibration on houses.

Due to COVID-19 restrictions a meeting did not go ahead, but a video conference was offered. Information that has previously been provided to the CRG was emailed to the resident along with an invitation to join a CRG meeting.

20/2/2020.

A report of a truck still releasing dust and dirt from under carriage at the Clausen Drive & Wellington Rd intersection. Due to a technical issue the SMS was not read until 16/3/20 and it was not feasible to investigate with the operators concerned. The technical issue has been resolved and Hanson apologised.

Preferred method of reporting is email:

- robert.francis@hanson.com.au
- bruce.webster@hanson.com.au
- community.vic@hanson.com.au

Blasting Videos



Quarry Cam





Quarry Cam

- Closed Circuit Remote Control Camera
- Improves safety & efficiency
- Solar powered camera tower
- 500 metres from Quarry Manager's office



Traffic Management

- Improving truck safety
- Recycled concrete blocks
- Produced on site



Hanson Lysterfield Quarry Rehabilitation Progress

April 29th 2020





2017 View of Eastern Face from Quarry



Eastern Face from National Park



Eastern Face from National Park



Eastern Face from National Park



Eastern Face from National Park



Eastern Face from National Park



Eastern Face Rehabilitation

31st January 2020



Eastern Face Rehabilitation



Questions?



Bruce Webster

Lysterfield Quarry Manager

P: 03 9274 3700

M: 0428 450 394

E: bruce.webster@hanson.com.au