

**Hanson Lysterfield Quarry  
Community Reference Group**

**MINUTES OF MEETING**

<b>Meeting No.:</b>	<b>22</b>	<b>Status of Minutes:</b>	<b>APPROVED</b>
<b>Date:</b>	19 February 2020	<b>Time:</b>	6:00pm
<b>Location:</b>	The Anderson Room, Waverley Golf Club, 82 Bergins Road, Rowville		
<b>Minutes Confirmed:</b>	Confirmed TH Seconded SL		

<b>Chairman:</b>	Brian Oates (BO)
------------------	------------------

**Present:**

<b>Members:</b>	Alan Birchall (AB) Virginia Bright (VB) Trevor Harley (TH) Paul Lees (PL) Alice MacKenzie (AM) Sally Orr (SO) Susan Pearce (SP) Monica Varcoe (MV)
<b>Presenters/ Observers:</b>	Paul Dickie, KCC (PD) Cr Darren Pearce (DP) Rob Francis, Hanson (RF) Garrett Hall, Golder, Hanson consultant (GH) Lyndel Hunter, LHSC, Hanson consultant

<b>Item</b>	<b>Issue</b>
<b>1</b>	<b>Welcome</b> Apologies received from: Wendy Belli Clayton Collins Darren Heathcote Shane Logan Absent: Trudi Dicker John Farrar Emma Pearce Geoff Gilbert, ERR
<b>2</b>	<b>Minutes of previous meeting</b> Minutes of Meeting 21 were carried by consensus. <b>Action Tracker</b> <b>Issue:</b> <i>LH to forward draft of CRG Newsletter Issue #3 to CRG members prior to next meeting.</i> Undertaken.

	<p><b>Issue:</b> <i>BW and RF to take photos of the quarry's rehabilitated batter slopes from inside the national park, to demonstrate progress of the growth of recent plantings.</i></p> <p>This is an ongoing activity and photos will be presented at each meeting.</p>
3	<p><b>Presentation: Project Update</b>  <i>Rob Francis, Hanson</i>  <i>Garrett Hall, Golder</i>  <i>(Refer to ATTACHMENT A)</i></p> <p>RF reported that current quarry projects include the quarry extension and overburden placement proposal</p> <p>The application process for the quarry extension and its current status was outlined.</p> <p>GH advised that the first draft of the quarry extension application was submitted to Earth Resource Regulation (ERR) in December 2019 and that ERR had since provided exhaustive feedback. Their specific queries were relevant to geotechnical and rehabilitation including the form of the future lake. Hanson is currently working through resolution of these queries.</p> <p>Once the revised application is submitted to ERR, it will be forwarded to the following statutory authorities for review and comment:</p> <ul style="list-style-type: none"> <li>· Aboriginal Victoria (Victorian Government)</li> <li>· Country Fire Authority (CFA)</li> <li>· Department of Environment, Land, Water and Planning (DELWP)</li> <li>· Environment Protection Authority Victoria (EPA)</li> <li>· Melbourne Water</li> <li>· Parks Victoria</li> <li>· Southern Rural Water</li> <li>· VicRoads</li> </ul> <p>Following receipt of comments, the application will be revised and adjusted to respond to specified requirements. After ERR endorse the Work Plan, Hanson will lodge a Planning Permit application with Knox City Council.</p> <p>Once this process is complete, the community engagement process will commence.</p> <p>TH queried how long the process would take. GH advised that it should take six months, but is more likely to take up to 12 months.</p> <p>RF advised that the key points of the application include:</p> <ul style="list-style-type: none"> <li>· The 400 metre buffer has been maintained</li> <li>· Quarry depth will increase by 15 metres</li> <li>· The rate of extraction is unchanged</li> <li>· Operating hours are unchanged</li> <li>· Rehabilitation of the site will include a lake and developable area suitable for a range of equestrian, commercial, resident or community outcomes.</li> </ul> <p>TH queried whether the 400m buffer would protect the view of the site. RF advised that there would be some variation to the sight line, however BW is currently working on the background view vegetation and that he had taken MV's suggestion to thicken up the understory vegetation in front of the ridge line.</p> <p>RF reported that Hanson is in the process of preparing the required documentation for Knox City Council (KCC) to meet the conditions for the overburden earthworks application.</p>

RF advised that the steps of development of an Equestrian Relocation Plan, the relocation of the equestrian facilities, vegetation offsets to be purchased by Hanson, availability of fill and machinery, and commencement of prefilling are yet to be completed.

At present, fill and machinery are not available as they are being utilised for the Mordialloc Bypass project.

Hanson requires approximately 1.2 million cubic metres and has a timeframe of two year to commence and four years to complete the overburden placements. It can be reasonably expected that the fill process would take 12 to 24 months.

The process will include sequencing of dressing and vegetation, with the first step being to ensure view from Wellington Road is protected.

At this stage, the type of truck to be used is not confirmed. Road trucks could be utilised.

RF advised that a permit for the overburden earthworks was issued on 31 December 2019 with strict conditions, including:

- Geotechnical specifications and engineering plans
- Construction Environmental Management Plan (CEMP)
- Construction times limited to:
  - Monday to Friday: 7.00 am – 4.00 pm
  - Saturday: 7.00 am – 1.00 pm
  - No works to be conducted on Sundays or Public Holidays
- Works must commence within two years and be completed within four years
- Trucks must not enter or exit the site via Wellington Road
- Trucks must only use the internal haul road to access the development site
- Only fill material sourced from the existing quarry may be used
- Site management to anticipate adverse operating conditions (weather)
- Dust management at all times
- Storm water and drainage management, bioretention systems and vegetated swales
- No discharge of sediment-laden runoff beyond the boundary
- No fill to be placed beyond the areas as shown on the endorsed plans
- Construction of site fencing
- Survey Plan by a qualified licensed surveyor upon completion
- Completion Report prepared by a qualified geotechnical Engineer

RF outlined vegetation and offset requirements, including:

- Tree protection zones and structural root zones
- Tree protection fencing
- Noxious weed removal
- Re-location of dead trees to create hollows/habitat for fauna
- At least 70 additional indigenous canopy trees, comprising 40 Yellow Box and 30 Long Leaf Box
- 0.790 hectares of native vegetation to be removed totals, comprise:
  - three patches of native vegetation
  - seven large scattered trees
  - 18 small scattered trees
- Hanson must secure general offset of 0.186 general habitat units with a minimum strategic biodiversity score of at least 0.430, and the offset(s) secured must also protect seven large trees
- A suitably qualified wildlife handler or zoologist is to be present when felling trees/removing native vegetation, to ensure affected wildlife is not harmed

<p><b>4</b></p>	<p><b>Presentation: Hanson updates</b> <i>Rob Francis, Hanson</i></p> <ul style="list-style-type: none"> <li>· <u>Lysterfield rehabilitation progress:</u> (Refer to <b>ATTACHMENT B</b>) RF provided images of the progress of the rehabilitation on the eastern side of the site</li> <li>· <u>Hanson Bushfire Assistance, Corryong:</u> (Refer to <b>ATTACHMENT C</b>) RF reported that, in late January 2020, a team of five local Hanson employees volunteered a day of fence building. The team attended a safety briefing and then headed out to a local farm where they worked for the day erecting 1.2km of fencing.</li> <li>· <u>HeidelbergCement achieves A rating for sustainability</u> (Refer to <b>ATTACHMENT C</b>) RF advised that the international non-profit organisation CDP (formerly Carbon Disclosure Project) has recognised HeidelbergCement (HC) with a place on the <b>Climate Change A-List 2019</b> as one of the leading companies worldwide for its commitment to climate action. HC has improved its rating in the area of climate protection from A- in the previous year to the top grade A, and thus remains leading in the cement sector. TH queried the source and validity of the data. RF advised he would present HC sustainability credentials and the next meeting.</li> </ul> <p><b>Action:</b></p> <ul style="list-style-type: none"> <li>· RF to present HC sustainability credentials and the next meeting.</li> </ul>
<p><b>5</b></p>	<p><b>Discussion: Outcomes of CRG Newsletter Issue #3</b> <i>Lyndel Hunter, LH Strategic Communication</i></p> <p>LH reported that 12,033 units had been distributed by Australia Post during week commencing 13 January 2020 to households in the Lysterfield, Lysterfield South and Rowville postcodes. In addition, BO had personally hand delivered several hundred to households in the Endeavour Hills closely located to the southern edge of the quarry. VG also distributed hard copies to agistors and students of Hillview Equestrian.</p> <p>The newsletter prompted four requests for inclusion on the Blasting SMS service, two requests for further information regarding blasting, and a visit from a community member (BW will provide more detailed report in 7.a below).</p> <p>A note of appreciation from a community member via email to the group was also received on 23 January 2020. Excerpt:</p> <p style="padding-left: 40px;">To the CRG, I have recently read Newsletter 3 - Jan 2020. I found it really informative &amp; will look forward to the next edition. Keep up your good work. From an interested neighbour and long-time Rowville resident.</p> <p>It was agreed by all that the intent of the newsletter had been a success.</p>
<p><b>6</b></p>	<p><b>Communication and Consultation</b> <i>All CRG members</i></p> <ul style="list-style-type: none"> <li>· Brief discussion regarding Boral community meeting on 12 December 2019. Several CRG members were in attendance. No new information provided.</li> </ul>

7

## Other Business

### 7.a Operational Report

*Bruce Webster, Quarry Manager*

(refer to **ATTACHMENT D**)

BW provided dust reports.

BW reported that rainfall records had been slightly above average since May and that dust readings at Montague Crescent are now lower than earlier in the year.

Other observations included:

- October rainfall was 30% below average
- November was slightly above average
- December was 1/10<sup>th</sup> of average
- January was 260% of average
- 21 January 2020 'dirty rain' caused by bushfires fell across Melbourne.

BW reported that dust readings at Montague Crescent were lower than early in 2019 and that higher on sire readings align with dry October and December.

BW reported that there had been six blasts since the last meeting and that blast monitoring results indicated very low readings. Video of blasts shown.

BW advised that a complaint re blasting had been received from a resident in The Croft Lysterfield. BW met with the community member and advised that Hanson had not conducted a blast on that particular day. However, Hanson has placed a blast monitor at the residence.

TH queried fluctuation in sound and vibration from blasts. BW advised that the direction of the blast and the type of rock blasted can create fluctuation.

BW advised that the key current infrastructure projects Hanson is supplying are:

- The Mordialloc Bypass which is a Type B fill for infrastructure support. This project has required extra truck movements and has resulted in a community member complaining about a 'white' truck ignoring a red light. BW emphasised that driver behaviour is very important to Hanson and to report anything witnessed to Hanson. Most cement trucks are white, so either get the vehicle registration and report back to Hanson or contact Vic Police directly. It is hoped that the Mordialloc Bypass project will be complete by mid-year. The product being utilised is similar to that required for the Hanson platform.
- New housing estates at Minta Farm and Smiths Lane in Clyde North, including flood plain and flood drainage.

BW reported that the rehabilitation program was going well and plantings had achieved a good strike rate. He advised that rehabilitation is being conducted now rather than waiting for closure of the site. Comparative images of rehabilitation progress over several years was shown.

Hanson had received a query from a community member seeking information re fire risk management at the site. BW advised that the Hanson water cart is a 110 tonne truck with a 50,000 litre capacity and a water cannon. The water cart can fill 22 CFA trucks and the Hanson fire hydrant can also fill CFA trucks. During the Bunyip North bushfire in March 2019, the water cart was utilised at the fire ground to fill CFA trucks.

BW advised that an overview camera showing several key areas of the site had been installed providing him with a broader scope of on-site activity.

### 7.b Questions and Answers

There were no further questions from CRG members.

<b>Meeting Closed:</b>	7:25pm
<b>Next Meeting:</b>	Meeting <b>23</b> Wednesday <b>29 April 2020</b> at <b>6:00pm</b>

**ACTION SUMMARY**

<b>Item</b>	<b>Issue</b>	<b>Action</b>	<b>By</b>
4	HC sustainability credentials to be presented at next meeting	29.04.20	RF



## Project Update

# Lysterfield Quarry Community Reference Group

February 19<sup>th</sup> 2020



---

## Current Quarry Projects

1. Quarry Extension
2. Overburden Placement Proposal



# Application Process for Quarry Extension

## Earth Resources Regulation (ERR)

Victorian Government Department of Jobs, Precincts and Regions. (DJPR)

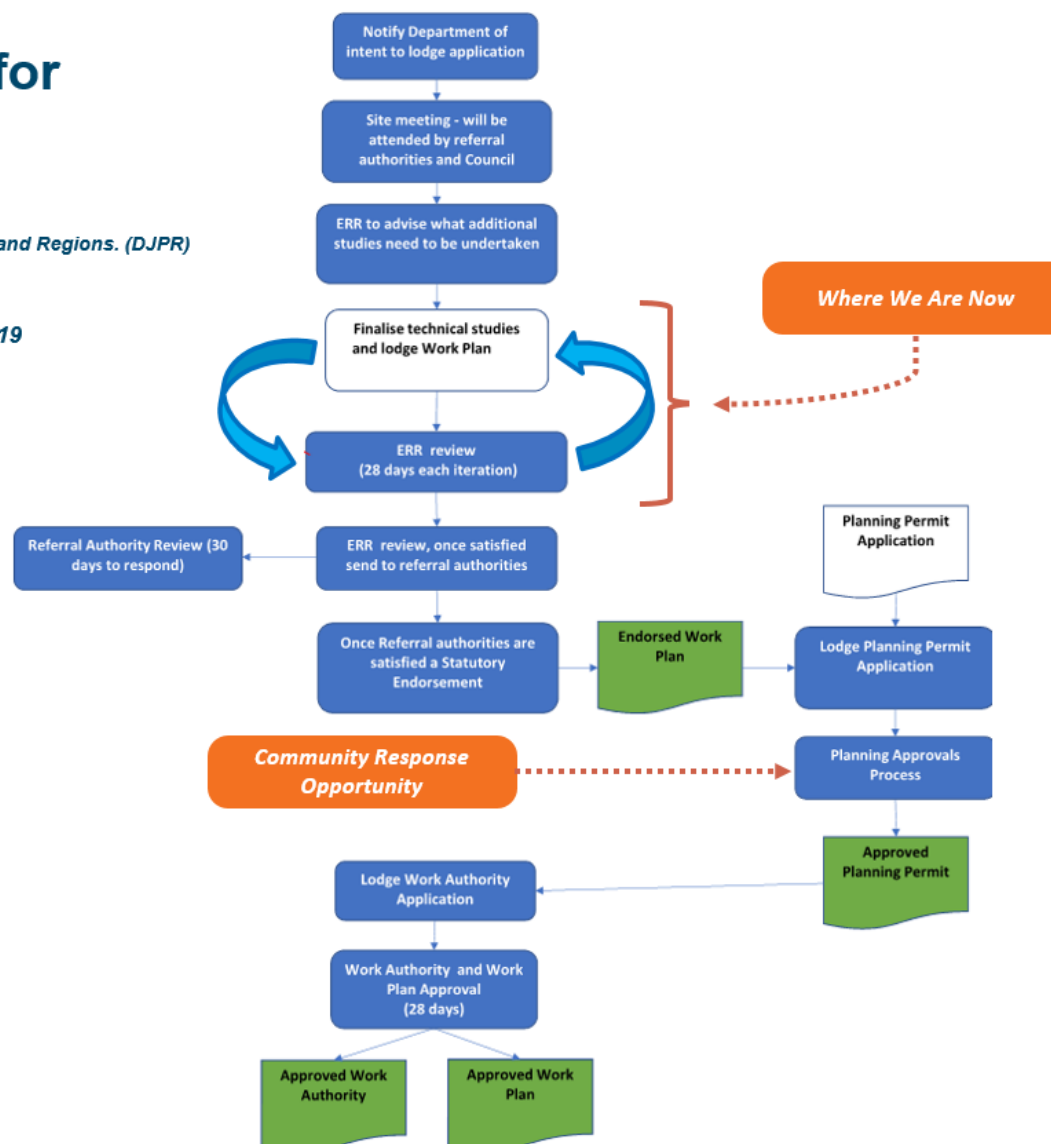
### ERR Application Progress:

- Hanson lodged application 19th December 2019
- ERR responded 17th January 2020
- Amendment process underway
- Hanson will submit revision

### Knox City Council

#### Referral Authorities:

- Aboriginal Victoria (Victorian Government)
- Country Fire Authority (CFA)
- Department of Environment, Land, Water & Planning (DELWP)
- Environment Protection Authority Victoria (EPA)
- Melbourne Water
- Parks Victoria
- Southern Rural Water
- VicRoads





## Application Key Points

---

- 400 metre buffer maintained
- Increase depth by 15 metres
- Rate of extraction unchanged
- Operating hours unchanged
- Rehabilitation to include a lake and developable area suitable for a range of equestrian, commercial, residential or community outcomes.



## 2. Overburden Placement & Potential Future Sports Grounds

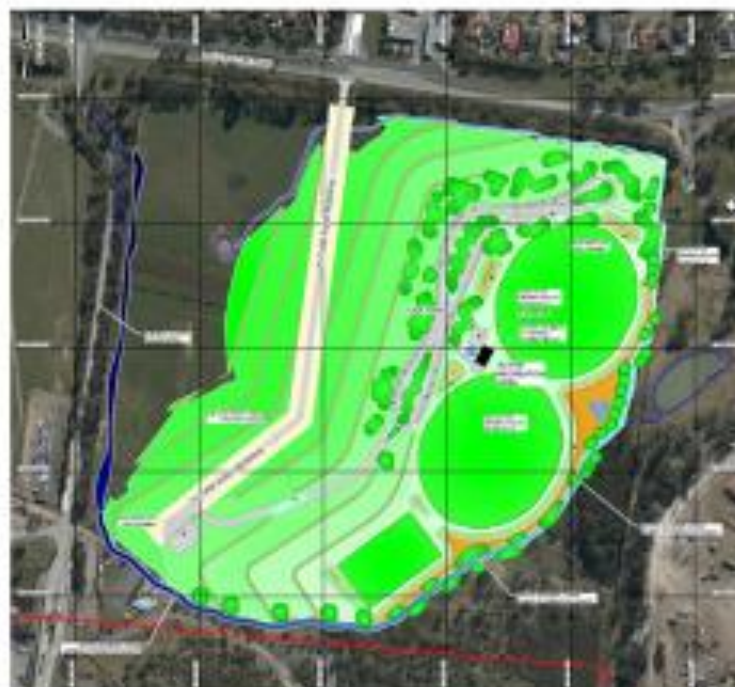


Plate 2: Potential Future Land Use



## Overburden Earthworks Application

- ✓ Prefill Design
- ✓ Lodge Planning Permit
- ✓ Arborist Study
  - Fill placement plan adjusted to avoid trees where possible
  - 7 large trees to be removed
  - Vegetation off sets required
- ✓ Permit Public Display
- ✓ Community Submissions
- ✓ DELWP referrals
- ✓ Council assessment
- ✓ Council decision to grant permit, unless appealed by 24/12/19
- ✓ Permit issued with strict conditions on 31/12/19
- Hanson to submit required documentation and met conditions
- Equestrian Relocation Plan
- Equestrian Relocation
- Vegetation Offsets purchased by Hanson
- Fill and machinery availability
- Commencement of Prefilling

Current Phase  
in Process



## Overburden Earthworks Permit

---

Permit issued with strict conditions on 31/12/19:

- Geotechnical specifications & engineering plans
- Construction Environmental Management Plan (CEMP)
- Construction times limited to:
  - Monday to Friday: 7.00 am – 4.00 pm,
  - Saturday: 7.00 am – 1.00 pm,
  - No Sunday & Public Holiday works
- Commence works within 2 years and complete works within 4 years
- Trucks must not enter or exit the site via Wellington Road
- Trucks must only use the internal haul road to access the development site
- Only fill material sourced from the existing quarry may be used
- Site management to anticipate adverse operating conditions (weather)
- Dust management at all times
- Storm water & drainage management, bioretention systems and vegetated swales
- No discharge of sediment-laden runoff beyond the boundary
- No fill is to be placed beyond the areas as shown on the endorsed plans
- Construction site fencing
- Survey Plan by a qualified licensed surveyor upon completion
- Completion Report prepared by a qualified geotechnical Engineer



## Overburden Earthworks Permit

---

### Vegetation & Offsets

- Tree protection zones & structural root zones
- Tree protection fencing
- Noxious weed removal
- Re-location of dead trees to create hollows/habitat for fauna
- At least 70 additional indigenous canopy trees
  - 40 Yellow Box and 30 Long Leaf Box.
- 0.790 hectares of native vegetation to be removed totals, comprised of:
  - 3 patches of native vegetation
  - 7 large scattered trees
  - 18 small scattered trees
- The permit holder must secure general offset of 0.186 general habitat units with a minimum strategic biodiversity score of at least 0.430, and the offset(s) secured must also protect 7 large trees.
- A suitably qualified wildlife handler or zoologist is to be present when felling trees/removing native vegetation, to ensure affected wildlife is not harmed.



## Hanson Lysterfield Quarry Rehabilitation Progress

February 19<sup>th</sup> 2020





## Eastern Face from National Park



Hanson





## Eastern Face from National Park

---





## Eastern Face from Quarry





## Eastern Face from Quarry





## Hanson Contact Details

---



### **Bruce Webster**

*Lysterfield Quarry Manager,  
Hanson*

P: 03 9274 3700

M: 0428 450 394

E: [bruce.webster@hanson.com.au](mailto:bruce.webster@hanson.com.au)



### **Rob Francis**

*Project Development Manager,  
Hanson*

P: 03 9274 3700

M: 0407 530 262

E: [robert.francis@hanson.com.au](mailto:robert.francis@hanson.com.au)





## Hanson Corporate Citizenship Snap Shot

Lysterfield Quarry  
CRG Meeting

February 19<sup>th</sup> 2020



## Bush Fire Relief



Corryong is small Victorian country town, population 1348, about 120km north east of Albury. Corryong was significantly impacted by the recent fires with many homes, animals, farm outbuildings and infrastructure lost to the fires. Working with the local Rotary organisation, a team of 5 local Hanson employees spent a day at a local farm erecting 1.2km of fencing. The team finished the day exhausted but very satisfied with the outcome and proud of the teamwork displayed on the hot day. Photos taken 30<sup>th</sup> Jan 2020.



20 January 2020

## **HeidelbergCement receives “A” rating for commitment to climate protection**

The international non-profit organisation CDP (formerly Carbon Disclosure Project) has recognised HeidelbergCement with a place on the "Climate Change A-List 2019" as one of the leading companies worldwide for its commitment to climate action. HeidelbergCement has improved its rating in the area of climate protection from A- in the previous year to the top grade A, and thus remains leading in the cement sector. In 2019, around 8,000 companies disclosed data to CDP. Of these, only 179 companies worldwide, thereof 9 in Germany, were awarded the top grade A.

„We are proud that we could further improve HeidelbergCement’s leading position from previous years and achieve a solid A rating on the CDP climate list. After our ambitious CO<sub>2</sub> reduction targets were approved by the Science Based Targets initiative (SBTi) in 2019, this prime rating once again demonstrates that HeidelbergCement is on the right track in terms of climate action”, says Dr. Bernd Scheifele, Chairman of the Managing Board of HeidelbergCement. “Cutting our CO<sub>2</sub> emissions and handling natural resources considerably are priorities for all our business lines.”

CDP is considered one of the most important sustainability ratings for investors. It assesses performance, transparency and proven management best practices from companies in the fields of climate change and protection of water and forests, allocating scores of A to D-. Goal of the CDP rating is to promote competition in the area of sustainability and encourage companies to set ambitious environmental protection targets. The companies on the CDP Climate Change A List are considered to be leaders because of their transparent and comprehensive disclosure of climate data, thorough awareness of climate risks, demonstration of strong governance and management of those risks, as well as their demonstration of market-leading best practices.



## Questions?

---



### **Rob Francis**

*Project Development Manager,  
Hanson*

P: 03 9274 3700

M: 0407 530 262

E: [robert.francis@hanson.com.au](mailto:robert.francis@hanson.com.au)

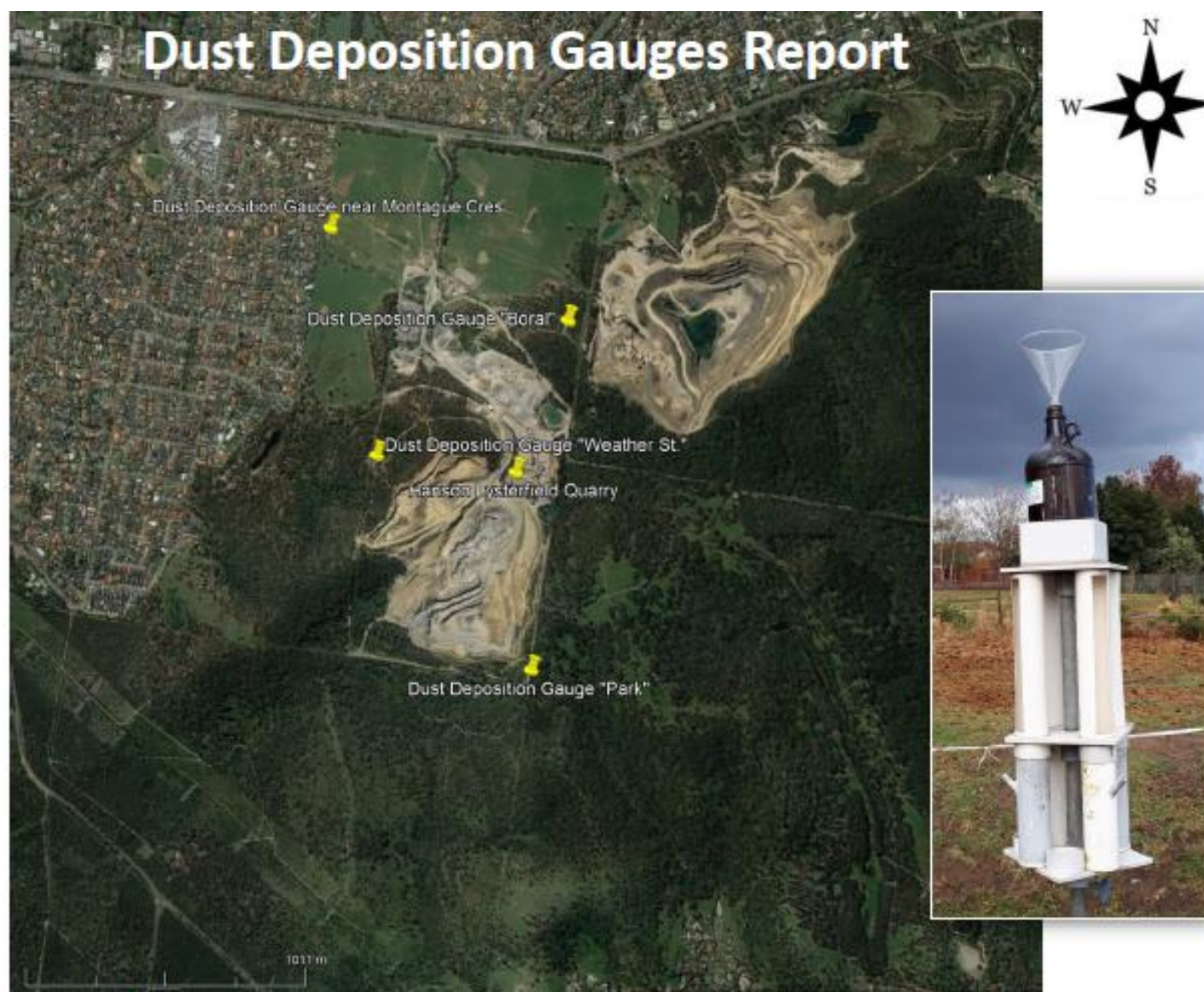




# Operational Report

## Lysterfield Quarry

February 19<sup>th</sup> 2020



## Dust Data – November 2019



## Dust Data – December 2019

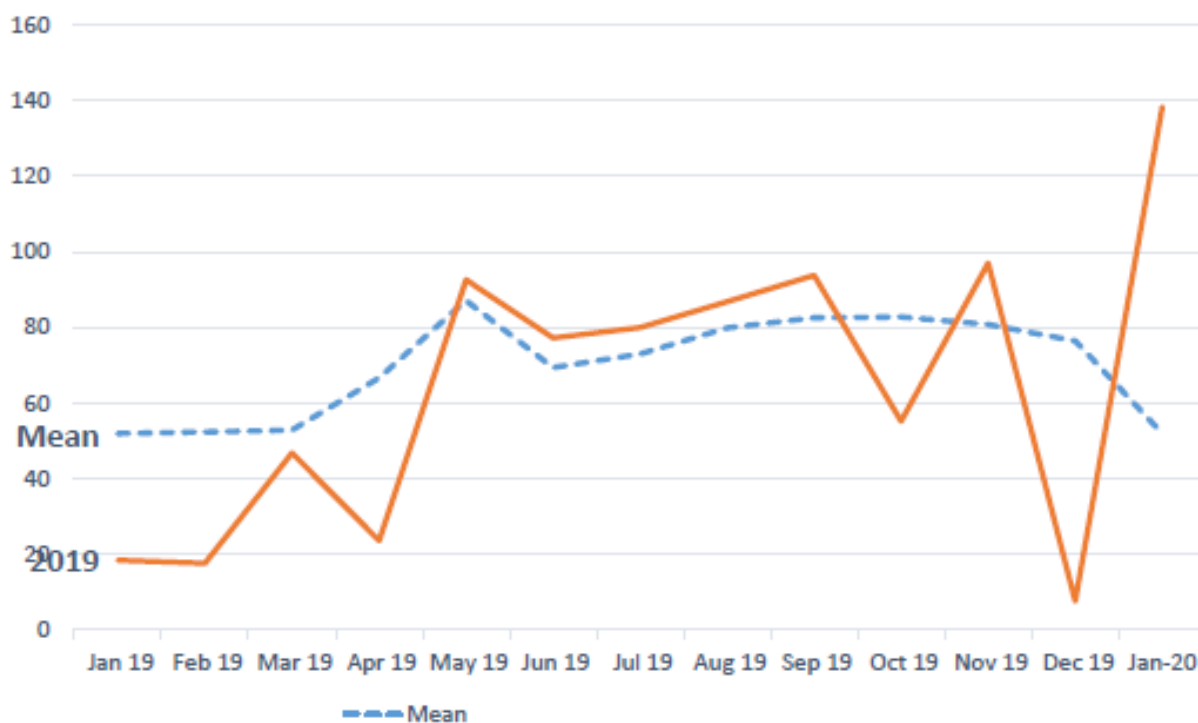




## Rainfall Data

[http://www.bom.gov.au/jsp/ncc/cdo/weatherData/av?p\\_nccObsCode=136&p\\_display\\_type=dailyDataFile&p\\_startYear=&p\\_c=&p\\_stn\\_num=086104](http://www.bom.gov.au/jsp/ncc/cdo/weatherData/av?p_nccObsCode=136&p_display_type=dailyDataFile&p_startYear=&p_c=&p_stn_num=086104)

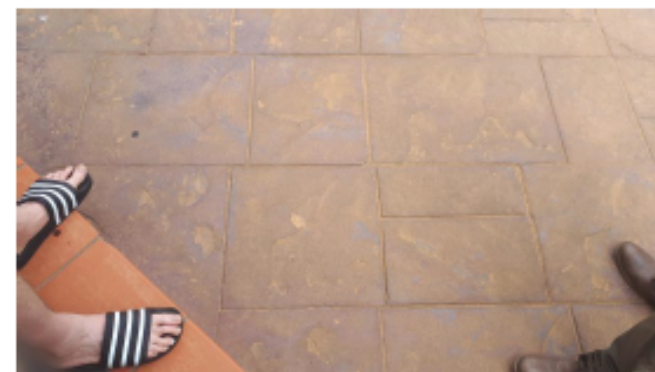
### Total vs Mean Rainfall Scoresby



Statistic	Jan	Feb	Mar	Apr	May	Jun	Jul	Aug	Sep	Oct	Nov	Dec
Mean	51.9	52.3	52.8	66.6	87.1	69.4	73.0	79.9	82.6	82.8	80.8	76.4
Median	50.8	39.2	46.0	62.6	83.1	64.6	71.2	82.4	78.6	77.8	72.5	73.7
Monthly Total	18.4	17.6	46.8	23.6	92.6	77.2	80.0	86.8	93.8	55.2	97.0	

## Comments, Observations & Photos

- Wind & weather data link
  - Rainfall slightly above average since May to Sept
    - October 30% below average
    - November slightly above average
    - December 1/10<sup>th</sup> of average
    - January 260% of average
    - Jan 21<sup>st</sup> “dirty rain” falls across Melbourne



- Comments...
  - Dust readings at Montague Cres lower than early 2019.
  - Higher on site readings may align with dry Oct & Dec.

# Blast Monitoring Results 2019

SHOT no.	Comments	40 Pitfield Crescent [TERROCK]		38 Heany Park Road [TERROCK]		15 Sandford Close [TERROCK]		6 Parkview Terrace [TERROCK]		7 forster hill grove	
	Date	VIBRATION mm/s	AIR BLAST dba	VIBRATION mm/s	AIR BLAST dba	VIBRATION mm/s	AIR BLAST dba	VIBRATION mm/s	AIR BLAST dba	VIBRATION mm/s	AIR BLAST dba
1843	14-Jan-19	0.32	88.34			1.16	99.35	0.27	95.08		
1839	canceled										
1901	22-Jan-19	0.22	91.27			1.13	96.62	0.26	86.34		
1902	1-Feb-19	0.27	98.06			1.46	104.53	0.3	92.49		
1903	6-Feb-19	0.16	91.7			0.9	99.96	0.32	97.44		
1904	18-Feb-19	0.21	99.18			0.15	92.23	0.21	96.22		
1905	26-Feb-19	0.36	96.22			1.38	99.85	0.31	101.29		
1906	7-Mar-19	0.35	96.85			1.88	101.69	0.48	92.98		
1907	7-Mar-19	0.17	92.61			0.75	100.57	0.17	91.56		
1908	18-Mar-19	0.29	96.93			1.17	105.43	0.32	95.98		
1909	25-Mar-19	0.18	94.89			0.84	98.38	0.27	106.86		
1910	1-Apr-19	0.24	101.99			1.55	101.99	0.24	91.99		
1911	3-Apr-19	0.56	98.12			1.57	98.88	0.56	98.76		
1912	9-Apr-19	0.24	96.14			1.23	104.96	0.24	100.91		
1913	9-Apr-19	0.24	96.14			1.23	104.96	0.24	100.91		
1914	17-Apr-19	0.24	88.38			0.72	102.56	0.39	101.24		
1915	23-Apr-19	0.31	98.76			0.75	106.81	0.37	96.62		
1916	29-Apr-19	0.58	92.74			1.21	95.88	0.38	98.38		
1917	1-May-19	0.29	89.15			1.61	96.22	0.31	96.62		
1918	8-May-19	0.32	96.05			1.78	96.05	0.5	95.8		
1919	15-May-19	0.28	95.08			1.28	98.57	0.22	96.22		
1920	22-May-19	0.31	92.74			1.14	96.14	0.56	105.37	0.73	108.43
1921	3-Jun-19	0.31	105.05			1.59	107.86	0.38	88.97		
1922	14-Jun-19	0.35	96.7			1.53	97.3	0.33	97.51		
1923	25-Jun-19	0.46	89.15			1.01	96.93	0.37	106.21		
1924	1-Jul-19	0.21	101.24			1.1	99.52	0.17	107.44		
1925	10-Jul-19	0.4	91.7			1.36	102.72	0.41	106.37		
1926	23-Jul-19	0.53	95.54			2.2	98.76	0.37	99.46		
1927	9-Aug-19	0.4	95.62			1.22	97.15	0.37	111.19		
1928	30-Jul-19	0.51	99.9			1.18	104.01	0.38	104.24		
1929	2-Aug-19	0.35	94.5			0.82	94.8	0.17	94.5		
1930	14-Aug-19	0.25	94.88			1.29	100.22	0.35	97.79		
1931	22-Aug-19	0.31	93.44			0.61	95.97	0.16	100.47		
1932	28-Aug-19	0.37	97.97			1.04	96.85	0.3	91.97		
1933	2-Sep-19	0.37	91.97			1.04	96.85	0.3	98.82		
1934	11-Sep-19	0.27	91.97			0.89	97.86	0.3	96.7		
1935	20-Sep-19	0.49	95.62			1.66	99.63	0.48	103.34		
1936	25-Sep-19	0.32	102.52			2.05	103.32	0.46	95.17		
1937	4-Oct-19	0.62	103.21			2.15	103.21	0.29	100.17		
1938	1-Nov-19	0.19	92.23			0.69	97.51	0.17	97		
1939	18-Oct-19	0.42	96.38			1.15	100.32	0.39	103.94		
1940	23-Oct-19	0.27	93.77			1.35	98.63	0.29	94.99		
1941	28-Oct-19	0.25	91.7			1.16	97.65	0.24	107.92		
1942	6-Nov-19	0.3	92.47			1.52	101.95	0.42	99.41		
1943	15-Nov-19	0.15	87.31			0.93	93.77	0.21	98.25		
1944	20-Nov-19	0.37	98.57			1.35	103.81	0.29	98.94		
1945	29-Nov-19	0.24	94.4			0.88	100.3	did not trigger	did not trigger		
1946	4-Dec-19	0.24	94.4			0.88	100.27	0.15	99.41		
1947	10-Dec-19	0.25	97.15			1.26	98.06	0.25	90.98		
1948	18-Dec-19	0.26	89.86			1.21	96.62	0.29	92.61		

# Blast Monitoring Results 2020

SHOT no.	Comments	40 Pitfield Crescent [TERROCK]		15 Sandford Close [TERROCK]		6 Parkview Terrace [TERROCK]		7 forster hill grove	
	Date	VIBRATION mm/s	AIR BLAST dba	VIBRATION mm/s	AIR BLAST dba	VIBRATION mm/s	AIR BLAST dba	VIBRATION mm/s	AIR BLAST dba
2001	10.01.2020	0.29	93.44	1.64	100.57	0.46	108.28		
2002	15.01.2020	0.29	86.59	1.38	94.09	0.48	92.61		
2003	24.01.2020	0.46	89.86	1.12	97.44	0.46	97.86		
2004	29.01.2020	0.36	93.33	1.71	97.65	0.31	102.36		
2005									
2006									
2007									
2008									
2009									
2010									

## Resident feedback blasting Feb:

- Blast that was felt was from the Boral quarry next door (resident located close to Boral site)
- Hanson Visited resident the following week
- Provided blasting summary and process information and discussed quarrying activities



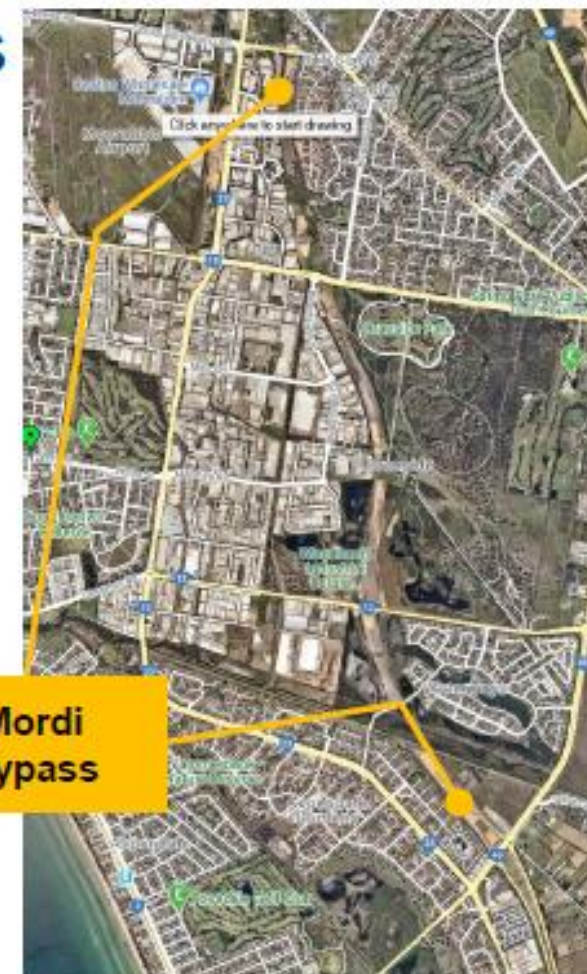
# Blasting operations



# Current infrastructure projects

Mordialloc Bypass

New Housing Estates Minta farm & Smiths lane







# Type B Fill production for infrastructure support - Mordialloc Bypass

Feedback from resident RE: truck traffic





## New Housing Estate Water features



## Hanson Lysterfield Quarry Rehabilitation Progress

February 19<sup>th</sup> 2020







## 2017 View of Eastern Face from Quarry

---



## Eastern Face from National Park



## Eastern Face from National Park





## Eastern Face from Quarry



# Top soil placement Middle batter

Planting planned for Mid 2020







## Resident Feedback: Fire Risk Management

### Hanson Water “Cart”.

- 50,000 litre capacity.
- 110 Tonne truck.
- Water cannon
- Hanson tanker can fill 22 CFA trucks
- Hanson fire hydrant can fill CFA trucks



# Fire Risk Management

## Fire Breaks





# Fire Risk Management

## Fire fighting capability

- Water cannon is first line of defence
- Can be used outside of Hanson site



Customer's 50,000 L Watercart at the  
fire ground Princes HWY Bunyip



## Questions?

---



### **Bruce Webster**

*Lysterfield Quarry Manager*

P: 03 9274 3700

M: 0428 450 394

E: [bruce.webster@hanson.com.au](mailto:bruce.webster@hanson.com.au)