



Direct Indial: 9411 3446
Our Ref: 142/002, 4412065
Your Ref:

9 February 2015

Rocla Ltd
130 Fauntleroy Avenue
REDCLIFFE WA 6104

ATT: Vern Newton

**DUST MANAGEMENT PLAN - BULK EARTHWORKS & QUARRY OPERATIONS
1712R RUSSELL ROAD WATTLEUP**

Thank you for the submission of the Dust Management Plan (DMP) as required for the above works.

The City's Health Services has assessed your plans against the criteria set down in the Department of Environment document "Land development sites and impacts on air quality – A guideline for the prevention of dust and smoke pollution from land development sites in Western Australia", Dec 2004.

The scope of the proposed earthworks has been considered and you are hereby advised that the site has been classified with respect to dust risk potential according to the two distinct operational phases which occur. **During site clearing, topsoil stripping and overburden earthworks, the site will be classed as 3 or "medium to high" risk with a score of 558.** While it has been noted in your DMP that, where possible, operations of this type will be scheduled for the wetter months of the year, it is important for you to note Condition 3 of the Notice regarding the bulk earthworks moratorium for Class 3 & 4 sites from 1 October to 31 March each year. You should be aware however that modifying preparation programmes, to reduce active works areas in particular, can significantly reduce site scores and therefore site classification and dust risk.

During standard excavation and quarrying operations, the site score reduces to 360, or a Class "2" low to medium risk site, principally due to the natural screening provided by the quarry design.

These classifications however indicate that a significant risk of dust or sand nuisance exists from this site should adequate management procedures not be installed and properly maintained. As a result, approval for your DMP has been issued in the form of a Notice with scheduled conditions attached, including your endorsed DMP. A copy has been forwarded to your consultant, Landform Research.

The City is pleased to work co-operatively with your company, according to both the approved DMP and the above conditions as agreed, on effectively reducing the potential for dust nuisance and sand drift from this site.

As the occupier, you should be aware, however, that the following general requirements apply to development and operational works on this site:

- 1. Should bulk earthworks be undertaken outside the approved works area, the City will consider them to be in breach of the conditions of the Approval Notice.***
- 2. All site works shall cease should a dust or sand drift nuisance caused by any works not be adequately addressed according to the above conditions of approval.***

Pre-Start Site Meeting

You will note that the scheduled terms of the Notice require that a site meeting is held prior to works commencing on-site, so as to allow the City's Health Services to confirm that the approved measures for dust control are in place. Please contact either Phil Oorjitham or myself on **9411 3589** to arrange the appropriate site meeting.

Thank you for your assistance with completing the approval process. Please do not hesitate to contact the City's Health Services directly on the above number if you have any queries or require clarification of any issues contained within this approval.



ROB BIDDISCOMBE
ENVIRONMENTAL HEALTH OFFICER

cc: Lindsay Stephens
Landform Research
25 Heather Road
ROLEYSTONE WA 6111



NOTICE OF CONDITIONS TO APPLY TO AN ACTIVITY TO BE CARRIED OUT ON LAND

Clause 5.11 of the City of Cockburn (Local Government Act) Amendment Local Law 2012

TO: Rocla Ltd
130 Fauntleroy Avenue
REDCLIFFE WA 6104

WHEREAS:

- A You are the occupier of land situated at 1712R Russell Road WATTLEUP 6166 ("the Land").
- B "The Land" is within the district of the City of Cockburn which has its offices at Cnr Rockingham Road and Coleville Crescent, Spearwood, WA.
- C The Council of the City of Cockburn is of the opinion sand or dust may be released or escape from "the Land" as a result of the activity specified in the First Schedule which is to be carried out by you, the occupier, on "the Land" ("the Activity").

NOW TAKE NOTICE

- 1. You must carry out "the Activity" in accordance with the conditions specified in the Second Schedule hereto ("the Conditions").
- 2. If you fail to carry out "the Activity" in accordance with the Conditions, you will commit an offence and be liable upon conviction to a penalty not exceeding \$5,000 and, if the offence is of a continuing nature, an additional penalty of \$500 for each day or part of a day during which the offence has continued or, in the case of a body corporate, a penalty not exceeding \$25,000 and, if the offence is of a continuing nature, an additional penalty of \$2,500 for each day or part of a day during which the offence has continued.

Date: 9 February 2015

NICK JONES
MANAGER HEALTH SERVICES

FIRST SCHEDULE

"The Activity" is described as:

"The carrying out of (1) Class 3 bulk earthworks comprising clearing of vegetation, topsoil stripping, overburden earthworks and (2) Class 2 excavation & quarrying operations by the occupier under licence from 2015 to 2020.

SECOND SCHEDULE

1. "The Activity" must be carried out in accordance with the dust management controls included in the Dust Management Plan (DMP) for "the Activity" as submitted to the City's Health Services on 7 January 2015 and also in compliance with the following additional requirements.
2. A site meeting shall be held between the occupier and the City's Environmental Health Officer prior to the commencement of any works on-site to ensure that "the Activity" will be carried out in accordance with the conditions of this Notice.
3. **Bulk earthworks are prohibited within the City of Cockburn on Class 3 or 4 development sites between 1 October and 31 March annually.**
4. The occupier shall satisfy the Manager Health Services that adequate site screening programmes are initiated and maintained for all worked areas of "the Land", and that an adequate water supply and site irrigation facilities are available at the site.

An adequate water supply and suitable water carting vehicle(s) in good working condition shall be available at the works site at all times.

5. All areas of "the Land" that are loose or exposed are to be stabilised by the use of appropriate dust suppressant materials such as water, hydromulch, seeded hydromulch, chemical, or physical soil stabilisation to ensure sand and dust does not escape or be released from "the Land" at any time.

After each area of clearing, earthworks or excavation is completed, if that area is to remain inactive for any period such as to represent a significant potential source of dust emissions, it should be stabilised by the Occupier with Dustex, mulch, seeded hydromulch, or revegetation as appropriate.

6. Should dust visibly cross the site boundary, dust suppression measures shall be increased immediately and works shall be modified accordingly. Should dust continue to be generated, all works shall cease immediately and the site shall be sufficiently stabilised by application of water until such a time as the wind conditions are appropriate to resume works.

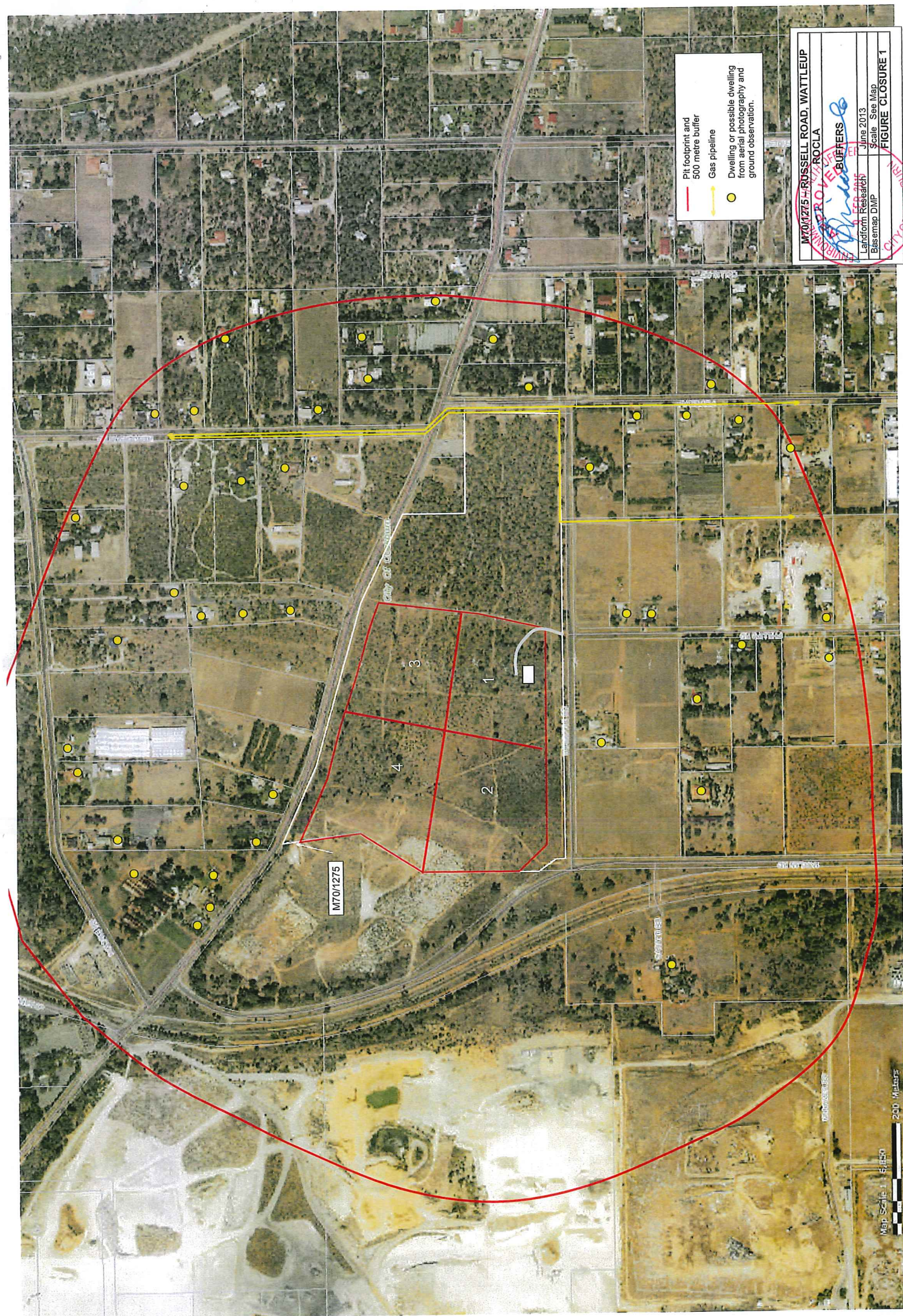
7. The occupier shall employ procedures to minimise escape of dust and sand from "the Land" onto surrounding roads and shall ensure that any accumulated material is removed on a regular basis, or as often as necessary to prevent such material becoming a source of dust nuisance.
8. Clearing, excavation work or any other activity that generates, or is likely to generate, dust or sand drift from "the Land", shall not be carried out where the wind is in excess of 25 knots. Where the wind is forecast by the WA Bureau of Meteorology to be in excess of 25 knots on any day, including non-working days, the site supervisor shall stabilize the site in anticipation of those conditions.
9. **The Contractor shall ensure that the name and contact details (including the Site Manager's mobile number) of the person responsible for the works on this site, and to whom any dust complaints are to be addressed, are displayed at the site at all times.**
10. **After all works on "the Land" are completed and before the occupier has vacated the site, "the Land" shall be stabilised to the satisfaction of the Manager Health Services.**



NICK JONES
MANAGER HEALTH SERVICES

9 February 2015

The applicant or any person aggrieved by this decision of the City's Health Service, is advised that they may apply to the State Administrative Tribunal, within 28 days of the date of issue of this approval document, for a review of the order or decision. A copy of the appeal shall also be forwarded to the City of Cockburn within the same time period.



- Pit footprint and 500 metre buffer
- Gas pipeline
- Dwelling or possible dwelling from aerial photography and ground observation.

M701275 - RUSSELL ROAD, WATTLEUP
ROCLA
BUEFFERS
June 2013
Scale - See Map
Landform Research
Basemap DMP
FIGURE CLOSURE 1

Map Scale 1:5,000
200 Metres